



TECHNICAL SERVICE BULLETIN

Classification: FA12-001J	Reference: NTB12-055J	Date: March 29, 2023
------------------------------	--------------------------	-------------------------

CLICKING NOISE FROM FRONT OR REAR AXLE DURING TAKE-OFF/ACCELERATION

This bulletin has been amended. See **AMENDMENT HISTORY** on the last page.
Please discard previous versions of this bulletin.

APPLIED VEHICLES:	2010-2020 370Z Coupe (Z34)	2013-2021 NV200 (M20)
	2010-2019 370Z Roadster (Z34)	2013-2019 NV200 Taxi (M20)
	2010-2013 Altima Coupe (CL32)	2010-2023 Pathfinder (R51/52/53)
	2010-2011 Altima Hybrid (L32H)	2011-2017 Quest (E52)
	2010-2023 Altima Sedan (L32/33/34)	2010-2023 Rogue (S35, T32/33)
	2017-2023 Armada (Y62)	2017-2019 Rogue Hybrid (T32H)
	2011-2014 cube (Z12)	2014-2015 Rogue Select (S35)
	2016-2023 Frontier (D40/41)	2017-2022 Rogue Sport (J11)
	2016-2021, 2023 GT-R (R35)	2010-2023 Sentra (B16/17/18)
	2011-2017 Juke (F15)	2016-2023 Titan/Titan XD (A61)
	2018-2023 Kicks (P15)	2007-2023 Versa Sedan (C11, N17/18)
	2011-2023 LEAF (ZE0/E1)	2007-2012 Versa Hatchback (C11)
	2010-2023 Maxima (A35/36)	2014-2019 Versa Note (E12)
	2010-2023 Murano (Z51/52)	2023 Z (Z34)

HINT: For LEAF vehicles, refer to NTB19-105 to check the lug nut torque before performing this bulletin.

IF YOU CONFIRM

A “clicking” noise coming from either left or right front/rear CV-type axles during take-off/acceleration.

ACTION

Apply Molykote® M77 grease (P/N 44003-7S000) to the hub bearing surfaces.

HINT:

- Do not remove the axle from the hub or transmission for this bulletin.
- Refer to the ESM for model-specific torque specifications.
 - For 2007-2019 Versa and 2013 LEAF vehicles, see the **SERVICE PROCEDURE** torque specifications on page 3.

IMPORTANT: The purpose of **ACTION** (above) is to give you a quick idea of the work you will be performing. You **MUST** closely follow the entire **SERVICE PROCEDURE** as it contains information that is essential to successfully completing the repair.

Nissan Bulletins are intended for use by qualified technicians, not 'do-it-yourselfers'. Qualified technicians are properly trained individuals who have the equipment, tools, safety instruction, and know-how to do a job properly and safely. NOTE: If you believe that a described condition may apply to a particular vehicle, DO NOT assume that it does. See your Nissan dealer to determine if this applies to your vehicle.

SERVICE PROCEDURE

HINT: The photos in this procedure are examples and may not look exactly like the vehicle you are working on.

1. Remove the front or rear (depending on model) wheel bearing Cotter Pin and Lock Nut from the axle.

NOTICE

Some of the **APPLIED VEHICLES** require the axle nut to be removed with a Cape Chisel, to prevent axle thread damage. Refer to NTB21-013 for specific details.

HINT: Do not remove the axle from the hub or transmission for this bulletin.

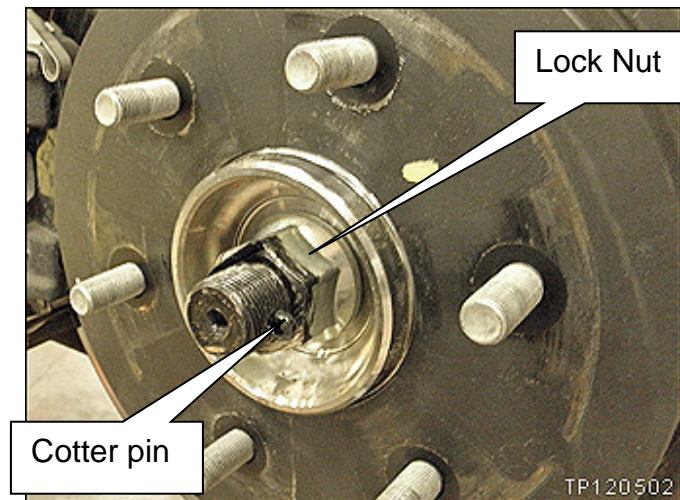


Figure 1

2. Push the axle back to allow application of Molykote® M77 grease (P/N 44003-7S000).
3. Apply a moderate coat of Molykote® to the entire (front or rear) wheel hub bearing surface (Figure 2).
4. Re-install the (front or rear) wheel bearing Lock Nut and Cotter Pin.

CAUTION

To avoid the risk of minor personal injury or property damage, replace the Cotter Pin after every use. If not done, a drive axle may become loose.

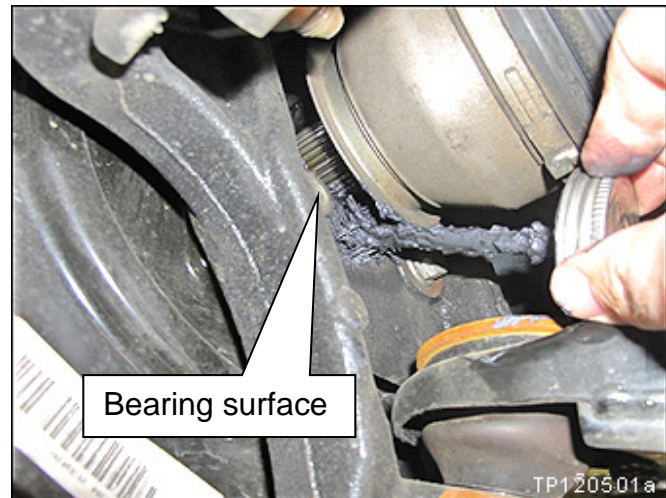


Figure 2

- Refer to the model-specific ESM for wheel bearing Lock Nut replacement requirements and torque specifications.
- For 370Z, LEAF, NV200, and 2013-2019 Sentra vehicles: Install the washer listed in the **PARTS INFORMATION** before installing the new Lock Nut.

IMPORTANT: See page 3 for important torque information for the vehicles listed below.

- **2007-2019 Versa (Hatchback, Sedan, Note)**
- **2013 LEAF**

IMPORTANT (for 2007-2019 Versa Sedan, Versa Hatchback, Versa Note only):

- Tighten the center Lock Nut to 180 N•m (18.4 kg-m, **133 ft-lb**) with a torque wrench.
 - If the center Lock Nut is tightened more than 180 N•m (18.4 kg-m, **133 ft-lb**), the clicking noise could occur.
 - If the center Lock Nut is tightened less than 180 N•m (18.4 kg-m, **133 ft-lb**), looseness could occur.
 - If the center Lock Nut is reused, the clicking noise could occur.

IMPORTANT (for 2013 LEAF only):

- Install the washer.
- Tighten the center Lock Nut to 121 N•m (12.3 kg-m, **89 ft-lb**) with a torque wrench.
 - If the center Lock Nut is tightened more than 121 N•m (12.3 kg-m, **89 ft-lb**), the clicking noise could occur.
 - If the center Lock Nut is tightened less than 121 N•m (12.3 kg-m, **89 ft-lb**), looseness could occur.
 - If the center Lock Nut is reused, the clicking noise could occur.

5. Test drive the vehicle to confirm the issue is resolved.

PARTS INFORMATION

DESCRIPTION	PART NUMBER	QUANTITY
Nut-Lock, Wheel Bearing (Wheel hub lock nut) (1)	(2)	1 per side
Cotter Pin (1)	40073-0L700 (3)	1 per side
Washer (1)	40037-1CA0A (4)	1 per side
Molykote® M77 Grease	44003-7S000 (5)	See EXPENSE CODE

- (1) Single-use part.
 (2) Refer to the Electronic Parts Catalog for model-specific part number.
 (3) Not required for wheel hub lock nut that is staked in place.
 (4) 370Z, LEAF, NV200, and 2013-2019 Sentra.
 (5) One container of Molykote® M77 Grease (P/N 44003-7S000) repairs multiple vehicles. Bill under an **EXPENSE CODE** as shown on the next page. Do not include Molykote® M77 Grease part number on this claim.

CLAIMS INFORMATION

Submit a Primary Part (PFP) line claim using the following claims coding:

ONE SIDE

Cube and Versa (C11, N17, E12)

DESCRIPTION	PFP	OP CODE	SYM	DIA	FRT
APPLY GREASE TO FRONT BEARING SURFACE (ON CAR, ONE SIDE)	(1)	MX22AA	ZL	21	0.4

- (1) Reference the Electronic Parts Catalog and use front hub bearing part number as the PFP.

370Z, Altima, Armada, Frontier, GT-R, Juke, Kicks, LEAF, Maxima, Murano, NV200, NV200 Taxi, Quest, Rogue, Rogue Sport, Sentra, Titan/Titan XD, Versa (N18), and Z

DESCRIPTION	PFP	OP CODE	SYM	DIA	FRT
APPLY GREASE TO FRONT BEARING SURFACE (ON CAR, ONE SIDE)	(1)	MX22AA	ZL	21	0.5

- (1) Reference the Electronic Parts Catalog and use front hub bearing part number as the PFP.

BOTH SIDES

Cube and Versa (C11, N17, E12)

DESCRIPTION	PFP	OP CODE	SYM	DIA	FRT
APPLY GREASE TO FRONT BEARING SURFACE (ON CAR, BOTH SIDES)	(1)	MX23AA	ZL	21	0.5

(1) Reference the Electronic Parts Catalog and use front hub bearing part number as the PFP.

Altima (L32, L33), Juke, Kicks, LEAF (ZE0), Maxima, Murano (Z51), NV200, NV200 Taxi, Pathfinder, Quest, Rogue, Rogue Sport, Sentra (B16, B17), and Versa (N18)

DESCRIPTION	PFP	OP CODE	SYM	DIA	FRT
APPLY GREASE TO BEARING SURFACE (ON CAR, BOTH SIDES)	(1)	MX23AA	ZL	21	0.6

(1) Reference the Electronic Parts Catalog and use front hub bearing part number as the PFP.

370Z, Altima (L34), Armada, Frontier, GT-R, LEAF (ZE1), Murano (Z52), Sentra (B18), Titan/Titan XD, and Z

DESCRIPTION	PFP	OP CODE	SYM	DIA	FRT
APPLY GREASE TO FRONT BEARING SURFACE (ON CAR, BOTH SIDES)	(1)	MX23AA	ZL	21	0.7

(1) Reference the Electronic Parts Catalog and use front hub bearing part number as the PFP.

EXPENSE CODE

EXPENSE CODE	DESCRIPTION	MAX AMOUNT
048	Molykote® M77 Grease	\$4.15

AMENDMENT HISTORY

PUBLISHED DATE	REFERENCE	DESCRIPTION
June 27, 2012	NTB12-055	Original bulletin published.
July 9, 2012	NTB12-055a	CLAIMS INFORMATION revised
March 22, 2013	NTB12-055b	APPLIED VEHICLES revised
September 17, 2013	NTB12-055c	Changes made throughout
November 11, 2013	NTB12-055d	APPLIED VEHICLES revised
July 10, 2015	NTB12-055e	APPLIED VEHICLES revised
June 20, 2017	NTB12-055f	APPLIED VEHICLES revised
January 17, 2020	NTB12-055g	APPLIED VEHICLES and PARTS INFORMATION revised
June 9, 2021	NTB12-055H	APPLIED VEHICLES and CLAIMS INFORMATION revised, and NOTICE added to step 1
September 27, 2022	NTB12-055I	APPLIED VEHICLES and CLAIMS INFORMATION revised
March 29, 2023	NTB12-055J	APPLIED VEHICLES and PARTS INFORMATION revised, EXPENSE CODE added, and "NOTE" references changed to "HINT"

