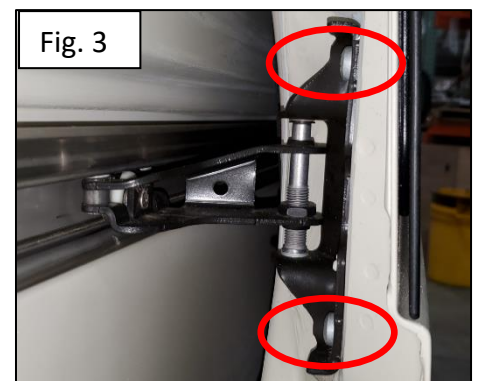
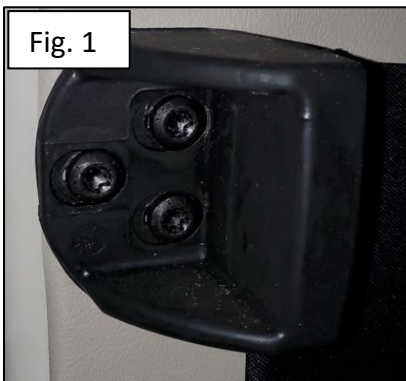


## Sprinter Mid-Door Slider ABS Panel Removal

<b>Bulletin Type:</b>	SRP	<b>Publication Date:</b>	April 2023
<b>Bulletin #(s):</b>	23-099	<b>Make(s):</b>	Jayco & Entegra Coach
<b>Job Code(s):</b>	<i>If affected unit has warranty remaining, submit your claim following the normal process</i>	<b>Model(s):</b>	Launch (19Y), Terrain (19Y), Launch LE (19L), Terrain LE (19L)
<b>Flat Rate(s):</b>		<b>Model Year(s):</b>	2021-2023
<b>Incident:</b>	Mercedes incident with mid-door slider failure.		
<b>Affected Units:</b>	2021-2023 Jayco Terrain (19Y), Terrain LE (19L) & Entegra Coach Launch (19Y), Launch LE (19L)		
<b>Parts List:</b>	N/A		
<b>Misc. Tools &amp; Supplies:</b>	Screw Gun w/Square Bit Ratchet with T45 Torx Bit		

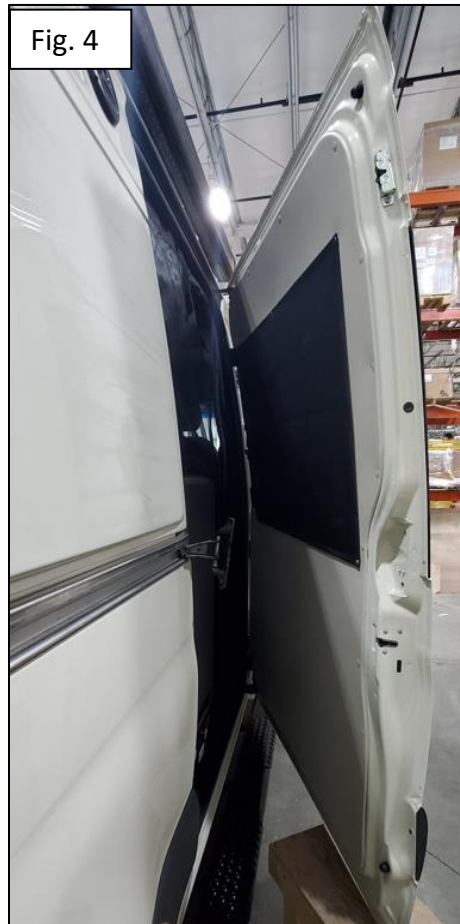
## Sprinter Mid-Door Slider ABS Panel Removal

1. With a T45 Torx Bit, remove the upper and lower slider door bumpers from the interior. Save fasteners and rubber bumpers to be re-installed. (Figure 1)
2. Removal of the Slider Mid-Door:
  - A. Locate something which can support the door when removed. The overall height should be approximately 18 inches tall. (Figure 2)
  - B. With an additional person holding the door and utilizing a T45 Torx Bit, remove the two fasteners from the door hinge to door connection. (Figure 3)
  - C. With the fasteners removed, set the door on the support and open as wide as necessary for full access to all the ABS Panel securement screws. (Figure 4)



- D. With the fasteners removed, set the door on the support and open as wide as necessary for full access to all the ABS Panel securement screws. (Figure 4)

3. Remove the screw retainer covers.
4. Using a screwgun with square bit, remove all fasteners and from the ABS Panel and privacy shade.
5. After panel is removed/replaced, the Slider Mid-Door can be re-installed to the OEM hinge:
  - A. Slide the door with support back towards the chassis body.
  - B. With an additional person holding the door in place, a second person will align the guide pins into the hinge slot and finger start the bolts back into the door.



- C. With a T45 Torx Bit, tighten and torque the bolts.

**TORQUE = 16 LBF-FT OR 203 LBF-IN**

- D. Shut the Slider Mid-Door and verify alignment.

6. Re-install the rubber bumpers, utilizing a T45 Torx Bit:
  - A. Install the smaller/shorter bumper at the top location.
  - B. Install the larger/longer bumper at the bottom location.

**TORQUE = 23 LBF-FT OR 283 LBF/IN**

*Jayco's sole obligation under our limited warranty is to repair or replace defective materials and/or workmanship deemed our responsibility as determined by Jayco in our sole discretion. Jayco reserves the right to use new and/or remanufactured parts or materials of similar quality to complete any work, and to make parts and/or design changes as appropriate without notice to anyone. Jayco designs and/or materials changes are done without obligation to incorporate such changes in previously manufactured product. Jayco makes every reasonable effort to ensure field remedies will not adversely affect performance and/or safety of the unit. This field remedy is not intended to extend to future performance of this RV, or any of its materials, components or parts beyond the standard warranty period. The RV owner's obligation to notify Jayco, or one of its independent, authorized dealers, of a claimed defect does not modify any obligation placed on the RV owner to contact Jayco directly when attempting to pursue remedies under state or federal law.*

903 South Main Street • P.O. Box 460 • Middlebury, IN 46540