

- ATTENTION:**
- GENERAL MANAGER
  - PARTS MANAGER
  - CLAIMS PERSONNEL
  - SERVICE MANAGER

IMPORTANT - All Service Personnel Should Read and Initial in the boxes provided, right.


© 2020 Subaru of America, Inc. All rights reserved.



QUALITY DRIVEN® SERVICE

**PRODUCT CAMPAIGN BULLETIN**

**APPLICABILITY:** 2020MY Legacy and Outback  
**SUBJECT:** Rear Visibility FMVSS 111 Non-Compliance

**NUMBER:** WRH-20R  
**DATE:** 12/11/20  
**REVISED:** 03/10/23

**NHTSA ID:** 20V-766

**INTRODUCTION:**

Subaru of America, Inc. (Subaru) is recalling certain 2020 model year Legacy and Outback vehicles in which a firmware-over-the-air (FOTA) update to the Cockpit Control Module (CCM) software may have timed out during the update.

A timeout failure during the data writing sequence could cause the data to become corrupted, and if corrupted, may result in the Center Information Display (CID) going blank. The failure to display the rearview image in the timing specified and/or periodic loss of rearview image creates a noncompliance with the requirements of FMVSS 111 – Rear Visibility, increasing the risk of a crash.

**AFFECTED VEHICLES:**

Not all vehicles listed below are included in this recall. Coverage for all affected vehicles must be confirmed by using the Vehicle Coverage Inquiry function on subarunet.com. This information is now available.

The number of U.S. vehicles affected by this recall is 7,741.

Model Year	Carline	Affected Units
2020	Legacy	Refer to Vehicle Coverage Inquiry for WRH-20 Recall Applicability
2020	Outback	

**DESCRIPTION OF THE REPAIR:**

Subaru dealers will reprogram the CCM software on the affected vehicles for free. If the CID is not properly displaying, the CCM will be replaced with an improved part for free.

<p><b>CAUTION: VEHICLE SERVICING PERFORMED BY UNTRAINED PERSONS COULD RESULT IN SERIOUS INJURY TO THOSE PERSONS OR TO OTHERS.</b></p> <p>Subaru Service Bulletins are intended for use by professional technicians ONLY. They are written to inform those technicians of conditions that may occur in some vehicles, or to provide information that could assist in the proper servicing of the vehicle. Properly trained technicians have the equipment, tools, safety instructions, and know-how to do the job correctly and safely. If a condition is described, DO NOT assume that this Service Bulletin applies to your vehicle, or that your vehicle will have that condition.</p>	<p style="text-align: center;"><b>Subaru of America, Inc. is ISO 14001 Compliant</b></p> <p>ISO 14001 is the international standard for excellence in Environmental Management Systems. Please recycle or dispose of automotive products in a manner that is friendly to our environment and in accordance with all local, state and federal laws and regulations.</p>
--	--

*Continued...*

## RETAILER RESPONSIBILITY:

Any vehicles listed in any recall/campaign that are in retailer stock must be:

- Immediately identified
- Tagged or otherwise marked to prevent their delivery or use prior to repair
- Repaired in accordance with the repair procedures outlined in the Product Campaign Bulletin

Retailers are to promptly perform the applicable service procedures, to correct all affected vehicles in their inventory (new, used, demo & SSLP). Additionally, whenever a vehicle subject to this safety recall is taken into inventory or in for service, necessary steps should be taken to ensure the repair has been made before selling or releasing the vehicle.

Please be sure to download a copy of your complete inventory report from the Vehicle Inventory Dashboard available on [subarunet.com](http://subarunet.com) to identify any vehicles with open recalls that may be in your retail, CPO, and SSLP inventory.

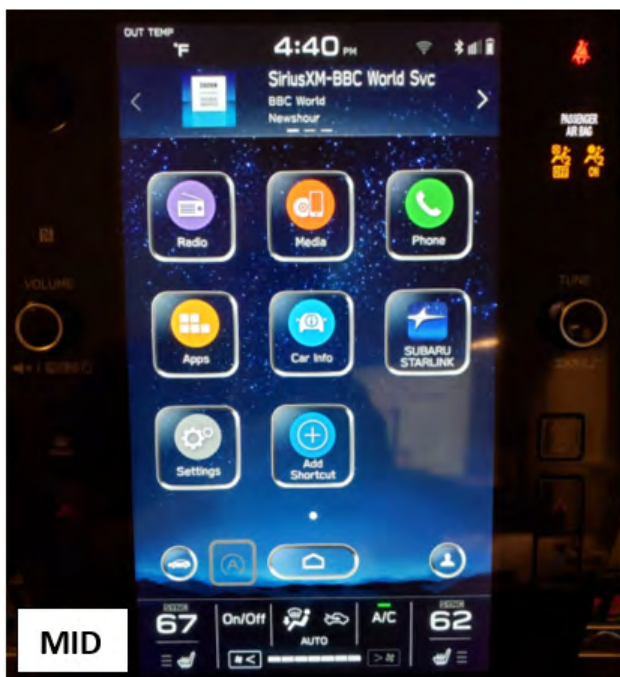
## OWNER NOTIFICATION:

Owner notification letters will be mailed in January 2021. Retailers will be notified when owner notification begins.

## SERVICE PROCEDURE:

**REMINDER:** Customer satisfaction and retention starts with performing quality repairs.

This Campaign affects certain “Mid” and “High” (w/ Navigation) -level CP1 Head Units with 11.6-inch display ONLY as pictured below. The “Base” model (2- 7.0-inch display screen unit) is NOT affected.



*Continued...*

## MATERIALS REQUIRED:

An empty, USB 2.0 or 3.0 storage device (flash drive) will be needed to perform the update procedure. The device should be dedicated to storing and transferring these updating files only. It must be a minimum of 16GB or more in size and contain a NTFS file format before downloading the update files onto it. Be sure to locate and re-format any existing USB drives used for updating Denso CP1 audio units to remove any outdated update versions. They must be fully cleared and properly formatted before adding these new update files to them.

## IMPORTANT NOTES:

- NEVER change the update file names after downloading them.
- NEVER save any other files on the same flash drive.

There are various types of USB flash drive available from many suppliers. If the head unit does NOT recognize the USB drive during the reprogramming process due to Controller IC type of USB drive or compatibility with the Cockpit Control Module (CCM), confirm the flash drive format is NTFS. The flash drive must be formatted for NTFS. If a recognition problem persists, use a different USB flash drive from another manufacturer.

## RECOMMENDED USB FLASH DRIVES:

- **Kingston®:**

DataTraveler G3 Series, DataTraveler 100 G3 DT100G3, DataTraveler SE9 Series, DataTraveler SE9 G2 3.0 DTSE9G2 and Digital Data Traveler 3.0 USB Flash Drive - Violet DTIG4



- **SanDisk®:**

Ultra Series SDCZ48-064G-J57, Cruiser Blade Series and Cruiser Glide Series CZ60 SDCZ60-064G-B35



*Continued...*

- **Transcend®:**

JetFlash 790 Series TS64GJF790KBE



- **PNY®:**

Retract USB 3.0 Flash Drive, black (P-FD64GTRTC-GE)



- **Silicon Power®:**

(2 Pack) USB 3.0/3.1 Gen1 USB Flash Drive Blaze B02



*Continued...*

**STEP 1:** Perform a Vehicle Inquiry on Subarunet to confirm **WRH-20** applicability. If there is an OPEN WRH-20 recall, proceed to **STEP 2**, otherwise this bulletin does not apply.

**STEP 2: Turn the ignition ON and start the engine. Observe the Center Information Display (CID) screen.** If the vehicle presents with a black / non-responsive display or one that appears to be continually rebooting, order a replacement Cockpit Control Module (CCM) following the normal exchange unit procedure (**NOTE: ONLY the CCM is required. Do NOT order a CID for this repair**). See **STEP 2a BEFORE installing the exchange CCM to confirm the replacement part has been updated with the latest (Version 4.0) software.** If CCM replacement is not required, proceed to **STEP 3** below to continue with the reprogramming procedure.

**STEP 2a:** When receiving the exchange CCM, inspect the back of the module for a GREEN dot as shown here. This **GREEN** dot signifies the module has already been updated with the latest Version 4.0 software. **NOTE:** All related CCMs shipped to retailers after 12/3/2020 have this dot. The **GREEN** dot will be applied to related exchange modules for six months. After that time, the dot will be discontinued but the modules will be OK for use. Proceed with CCM R&R following the procedure in the applicable Service Manual.



**VERY IMPORTANT:**

- Always record the serial number of the exchange CCM being installed on the Repair Order (RO).
- Confirm and record the software version number installed in the exchange CCM on the RO. See **STEP 3** for instructions.
- After CCM replacement, ALWAYS confirm proper back-up camera operation before releasing the vehicle.

When complete, proceed to the Claim Reimbursement and Entry Procedures section and process a claim for CCM replacement.

*Continued...*



## ADDITIONAL REPROGRAMMING FILE CONTENT INFORMATION:

In addition to the update for Firmware Over The Air (FOTA) functionality, the following list of other updates and an enhancement addressed by this reprogramming are outlined below:

- Clarification of the post-FOTA procedure instructions required to complete the update. The screenshot below will appear and explain what must be done to complete the update installation.

**Software Update Installation Complete**  
To complete the update, your vehicle and STARLINK system must be fully shut down. Please turn off the engine and exit the vehicle. Lock doors, and let the vehicle sit for at least 5 minutes. It is recommended to walk at least 10 feet from the vehicle to prevent key fob interference. After waiting at least 5 minutes, enter the vehicle and turn the engine on. An "Update Successful" message will appear after a few moments. The update will then be complete.



- Currently, the microphone level indication is incorrect. The indicator level has been corrected. More microphone level indication information is included in TSB 15-275-20.
- A reduced (low) volume (-6db) concern during handsfree conversation when using CarPlay has been addressed to make the volume level consistent.
- Voice recognition (VR) has been enhanced to improve recognition of short words (e.g. YES).
- The program has been corrected to prevent repeated rebooting and system freeze-up immediately after activation of AndroidAuto.
- Eliminate CP1 MOTA error message "Something went wrong. The system is unable to install any map updates. Contact your dealer for more information."

## OPERATIONAL ENHANCEMENT INCLUDED:

The Auto Stop-Start On/Off function button has been moved from the bottom to top layer of the system for easier use. A screenshot of how the button will appear is shown below.



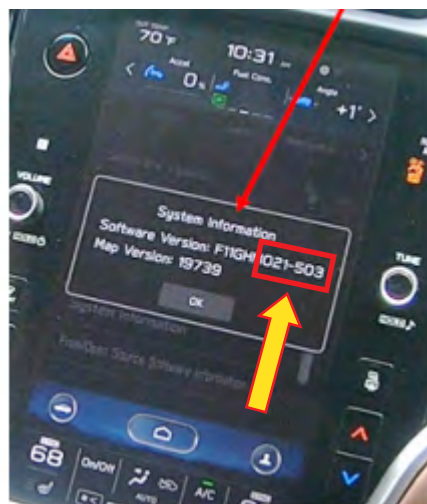
*Continued...*

**STEP 3: VERY IMPORTANT:** Before proceeding with the software updating procedure, the currently installed software version ID **MUST** be confirmed by following the steps below:

**3a)** After starting the engine and system boot-up completes, from the HOME screen, touch the Settings button.



**3b)** Press the General button. Use the down arrow to scroll to System Information then press to display the System Information / Version information.



The examples below identify the head unit model and the last 6 digits signify the software version number. Examples:

- F11GHMxxx-xxx (HIGH model software)
- F11GMMxxx-xxx (MID model software)

If the vehicle is a 2020MY Legacy or Outback and the software version number (xxx-xxx) is **020-501**, **020-502**, **021-503**, **022-504** or later per TSB 15-261-20R, proceed to **STEP 4** below. If the software version is **042-380** or higher, STOP as the module already has the latest software version installed. Proceed to the **WARRANTY / CLAIM INFORMATION** section of the TSB and process a Version Check Only claim. **NOTE:** The version identified **MUST** be entered in the Miscellaneous Detail field during claim submission. Refer to TSB **15-261-20R** to see the latest software version information as well as a history of prior updates. Software versions released after December 2020 (**042-380** or higher) are acceptable to complete and close this recall.

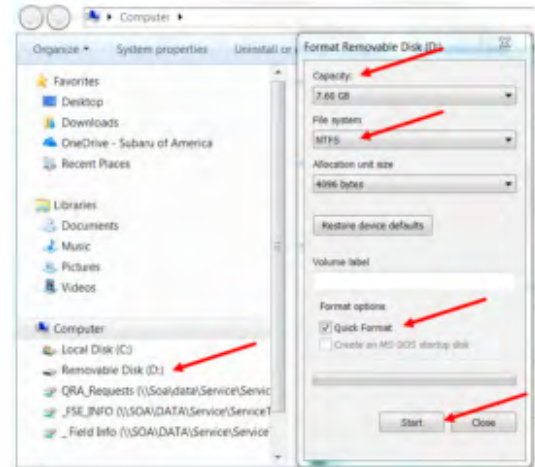
*Continued...*

**STEP 4:** Prepare the USB:

**CAUTION:** Do not use any USB flash drive which utilizes file organizing software or an operating system.

**VERY IMPORTANT:** Before attempting to download any data files, confirm the PC and flash drive being used is not infected with any virus. The flash drive **MUST** be formatted for NTFS.

- Make sure the USB flash drive contains no other files.
- Right click on the corresponding “Removable Disk”.
- Select “Format”.
- From the File System drop-down menu, select “NTFS”
- Check the “Quick Format” box (if not already done).
- Click on “Start” to format the USB flash drive.



**STEP 5:** Download the Update Files to the USB.

- The files are available for download on Subarunet (See “A” below).
- The applicable reprogramming files have also been sent directly to retailers by Nuspire in the same way a Select Monitor Update would be pushed out. (See “B” below).

Follow “A” below when using files downloaded from Subarunet. Subarunet Links Page screenshot:

**A:**

The screenshot shows the Subarunet website interface. At the top, there are navigation tabs for 'Forms' and 'Downloads'. Below that, a navigation bar lists vehicle models: 'Gen 4/Thru', 'Gen 3/Clarion', 'Gen 2/Clarion', and 'Gen 1/Clarion'. The main content area is titled 'Gen 4: Denso' and contains several sections: 'Questionnaire Instructions', 'Questionnaires' (with links for All, Apple CarPlay, Android Audio, Audio Output, Bluetooth Operation, and General), 'Technical Support Guide' (with links for Guide, Data Log Collection, CP1 troubleshooting Flow, and No Audio troubleshooting Flow), 'TSRs and Tips' (with links for 15-250-19, 15-250-20B, 15-261-20B, and 15-273-20), and 'Software Download'. A yellow arrow points to the 'Software Download' section, which contains a note and links for updates for Gen 4.0 Denso Audio and Navigation Head Units for 2020MY Legacy / Outback and 2021MY Legacy / Outback. At the bottom, a note states that files will be .zip and must be extracted prior to use.

*Continued...*

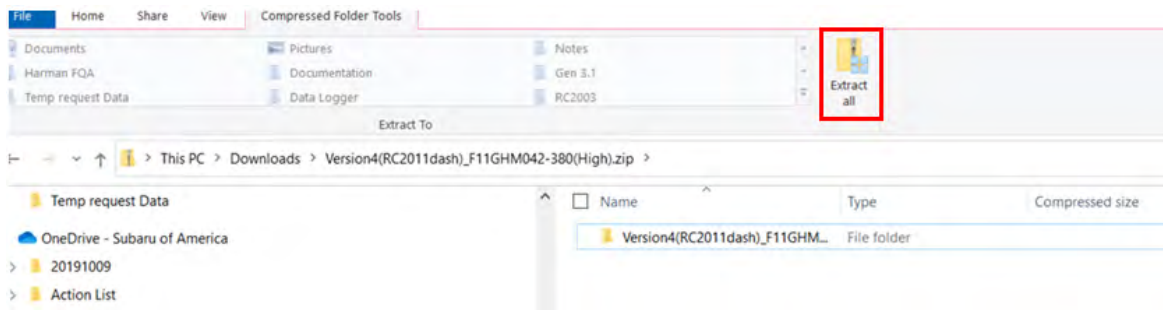


**IMPORTANT:** Files downloaded from Subarunet will be .zip files and must be unzipped before they can be used. Using the normal audio / navigation system file update download procedure: Go to Subarunet, select Service Operations and Technical>>Forms/Downloads>>Gen 4/Denso for Audio/ Navi then click on the applicable Hyperlink to download the file(s) to your SDS Notebook or PC:

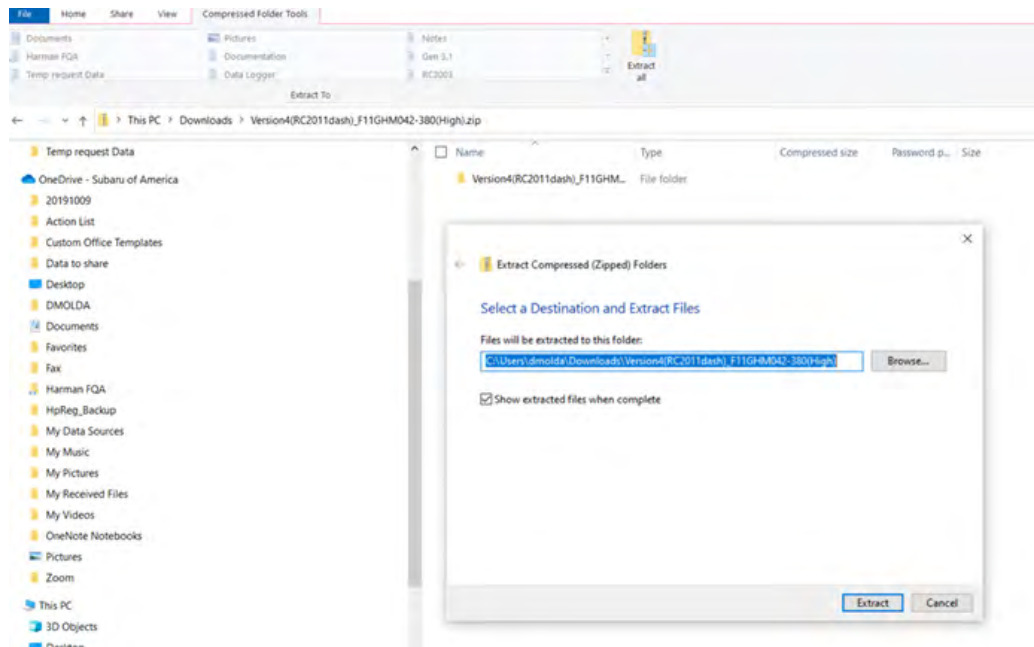
MID-20-Legacy-Outback-Denso-CP1 AUDIO UPDATE-DECEMBER 2020  
HIGH-20-Legacy-Outback-Denso-CP1 AUDIO UPDATE-DECEMBER 2020

**REMINDER:** Although BASE models are listed on the Links Page, this **WRH-20** Campaign is applicable to “MID” and “HIGH” (Navigation-equipped) units ONLY.

- Go to Downloads.
- **CAUTION:** After download is complete, NEVER change the file or folder names.
- Open / display the contents of File folder, for example: “Version4(RC2011dash)\_F11GHM042-380(High).zip”.
- Click on “Extract All Files”

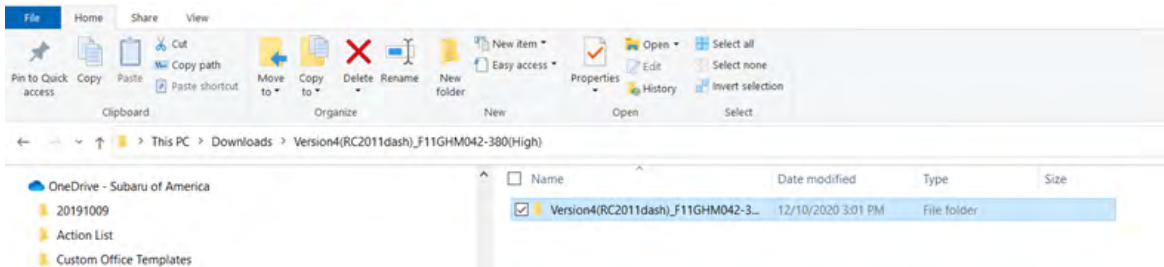


- The screen below will appear to set a destination for the extracted file.

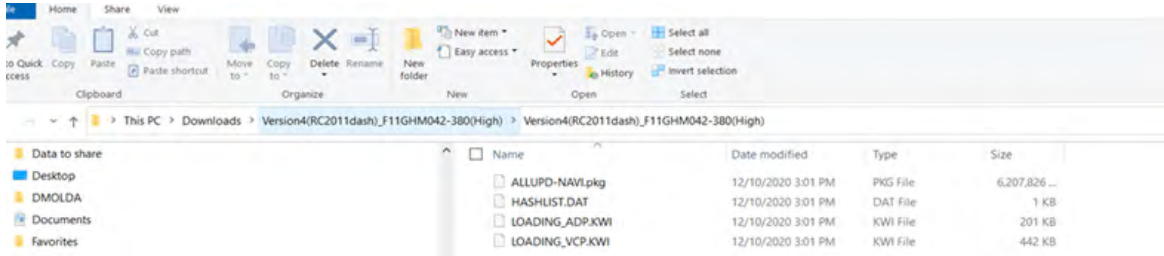


*Continued...*

- Double-click on the required folder (for this example, select the file entitled “Version4(RC2011dash)\_F11GHM042-380(High)”)



- This will display all 4 (four) files inside the folder

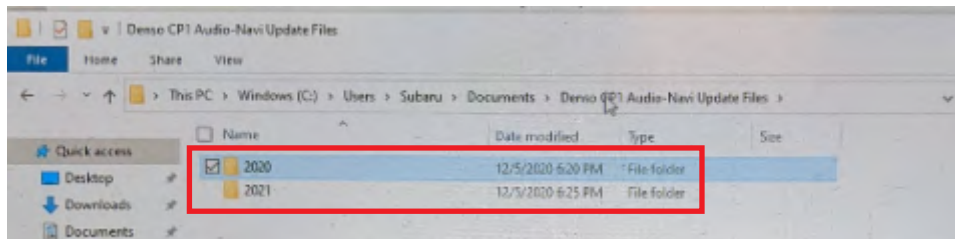


- Select and copy all 4 (four) files then paste (or click / drag) them into the “clean” USB flash drive as listed (Removable Disk) in the directory.
- To avoid confusion, use a permanent marker to label the flash drive with the file contents (e.g. MID Denso CP1, HIGH Denso CP1 or HIGH Denso CP1 WRH-20).
- Go to **STEP 6**:

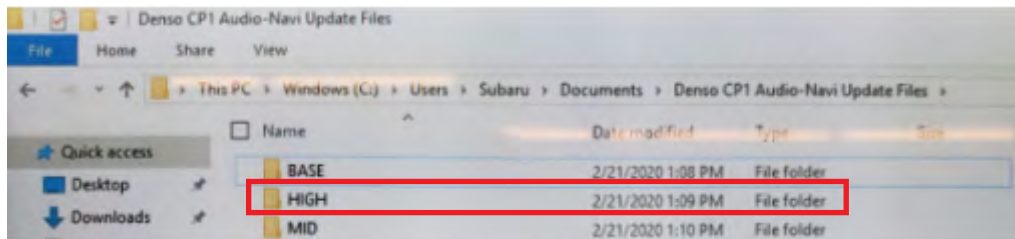
Follow “**B**” below when using the files sent directly to the SDS notebook from Nuspire.

**B:**

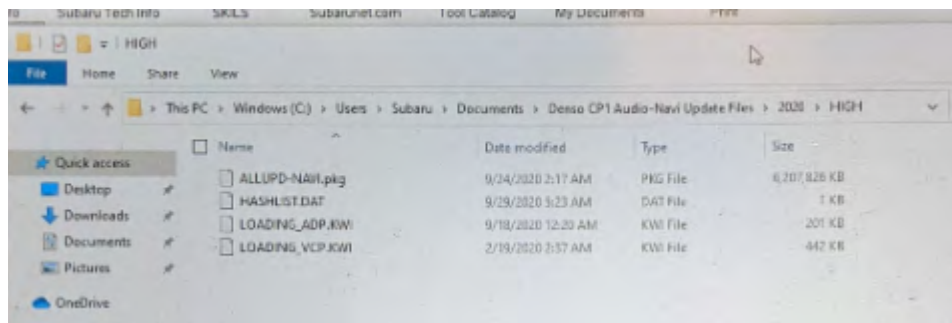
- Go to My Documents on the GUI screen click on the folder “Denso CP1 Audio-Navi Update Files” to display the list of available update files shown below. **IMPORTANT:** Always confirm there are two folders as shown below, “**2020**” and “**2021**”. If not, the SDS notebook hasn’t been updated with the latest release. Please contact Nuspire to request they resend the update.



*Continued...*



- Double-click on the required folder (for this example, select the file entitled “**HIGH**”) and the update file will display as shown below.



- Select all 4 files and either copy / paste or click / drag them to the USB flash drive.

**CAUTION:** NEVER change the file names.

- Once all files have been loaded onto the USB flash drive, right click on the drive and select “Eject”.
- Remove the USB flash drive after the prompt appears that says, “Safe to Remove Hardware”.
- Mark the USB to indicate the head unit it will update (MID Denso CP1 WRH in this example).
- Repeat the above steps to create the MID Denso CP1 WRH or HIGH Denso CP1 WRH USB flash drives as needed using a separate USB drive for each update folder.
- Proceed to STEP 6 below.

**STEP 6:**

Perform the software update.

**CAUTIONS:**

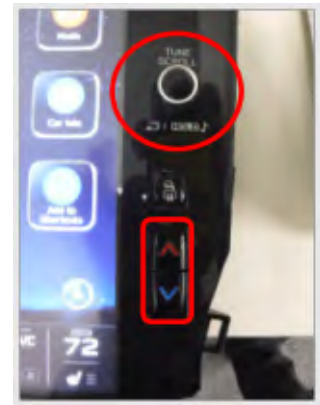
- **NEVER** attempt to install the software immediately following an exchange module installation. Let the system restart first and operate for 20 minutes.
- **NEVER** attempt to install the software a second time for 30 minutes following a previously unsuccessful software installation.

*Continued...*

- **NEVER** attempt to install the software for at least 30 minutes after completing a FOTA update.

**6a)** Perform the update in a well-ventilated location if updating with the engine running OR with the ignition ON and the DCA battery charger connected in Power Supply mode.

**6b)** PRESS and HOLD the RIGHT-side temperature control buttons (both up and down), press the Tune / Scroll knob 6 times then release all to display the Dealership Mode Menu.



**6c)** Select Software Update from the Dealership Mode menu.



**IMPORTANT NOTE:** On a RARE occasion, the message “Software update setup is initializing...” may be displayed. Should this occur, proceed to “**Appendix A**” at the end of this bulletin for further instruction. For critical Service Bulletin helpful tips to prevent unnecessary hardware replacement, follow the link to an important Subarunet message: <https://www.subarunet.com/home/home.html#/Announcement/83194>.

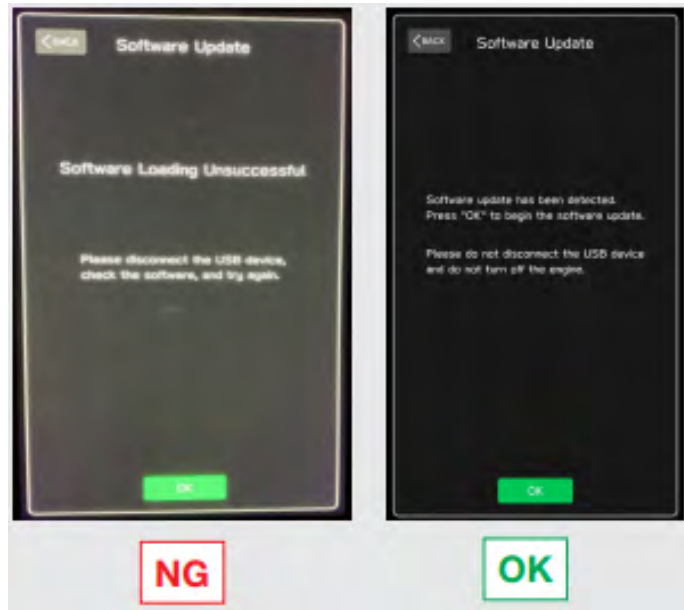
**6d)** The screen shown here will be displayed.



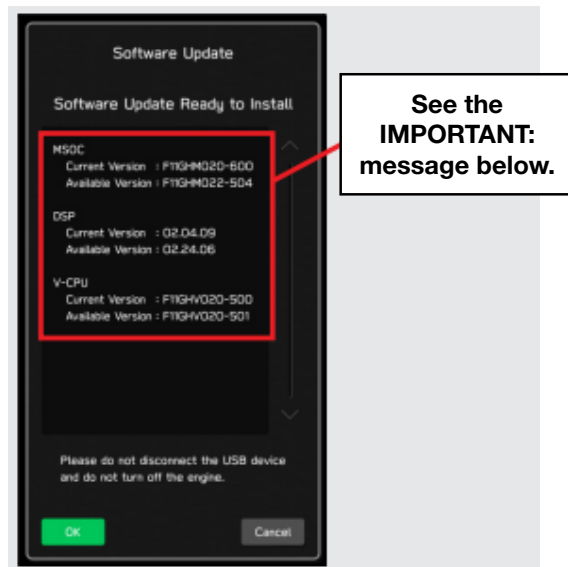
*Continued...*

6e) Insert the H/U reprogramming USB into the USB port. When the update screen appears, confirm the message on it and if no concerns, press OK.

**NOTE:** If after plugging in the USB, the screen displays a Software Loading Unsuccessful message, confirm the USB device has been properly formatted and the software on the device matches the H/U being reprogrammed (example: **MID** software is being used to update a **MID** H/U).



6f) The screen below will be displayed. **NOTE:** The actual software version displayed will be different from the EXAMPLE picture shown below.



**IMPORTANT:** The example above identifies the head unit model and the last 6 digits signify the software version number. Examples:

- F11GHMxxx-xxx (HIGH model software)
- F11GMxxx-xxx (MID model software)

### Software Version Table

*Continued...*



Current Version	
Model	MSOC Version
High	F11GHM020-501 or F11GHM020-502 or F11GHM021-503 or F11GHM022-504 or F11GHM020-704 and F11GHM021-704
Mid	F11GMM020-501 or F11GMM020-502 or F11GMM021-503 or F11GMM022-504 or F11GMM020-704 and F11GMM021-704

Available Version	
Model	MSOC Version
High	F11GHM042-380
Mid	F11GMM042-380

< DSP >

Current Version

Model	DSP Version
High/Mid	02.04.03 or 02.24.06

Available Version

Model	DSP Version
High/Mid	02.26.08

< VCPU >

Current Version

Model	VCPU Version
High/Mid	F11GHV020-500

Available Version

Model	VCPU Version
High/Mid	F11GHV020-501

**CRITICAL STEP**

Confirm the MSOC Available Version listed here matches with what is shown on the CID.

This is One Possible Example for High Model

MSOC

Current Version : F11GHM020-501

Available Version : F11GHM042-380

If it does not match the Available Version shown on the CID Screen **STOP** and load the correct file to the USB Drive.

- Press OK to start the software update.

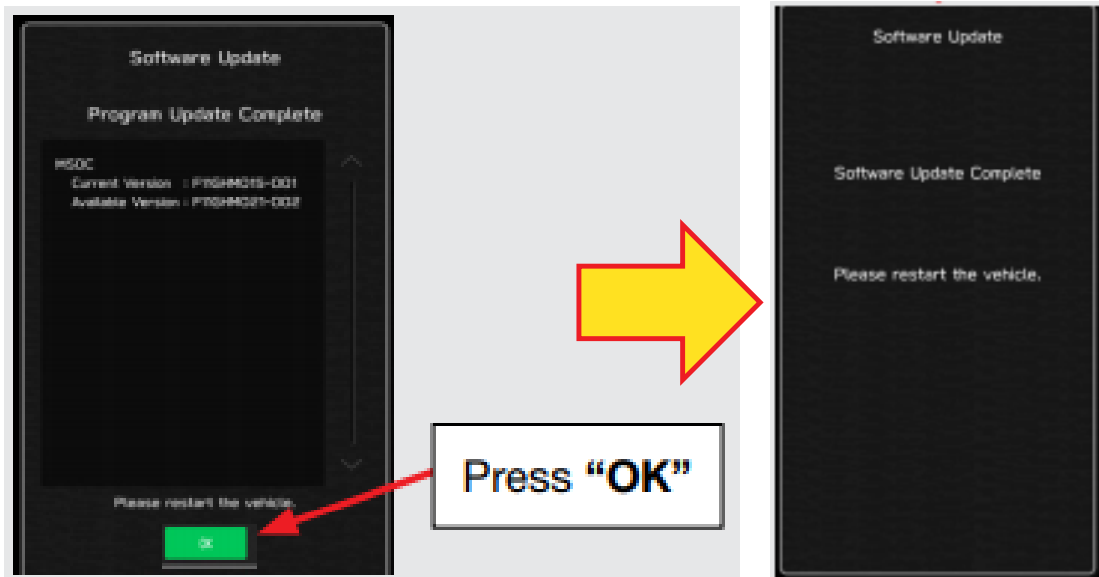
**6g)** Once the update begins, the screen below will be displayed with a progress bar. It takes about 15 to 20 minutes for the update to complete.

**VERY IMPORTANT: NEVER** turn the ignition OFF or ON while the software update is in process. To avoid any concerns with battery condition during programming, always perform the update with either the engine running (outside or with exhaust hose attached) or with the DCA charger attached and in power supply mode.

*Continued...*



**6h)** When the update is complete, the screen below will be displayed (the actual software version number will be different).



**IMPORTANT NOTE:** On rare occasions a “Software Update Incomplete” message may appear in this step which occurs due to a bug in the software update procedure. **DO NOT** attempt to install the update again, proceed to **6i)** below to confirm the software version has been updated to the latest version.

- 6i)** Select OK in the screen above then remove the H/U reprogramming USB from the USB port.
- 6j)** Turn the ignition OFF, open the driver’s door then close the driver’s door.
- 6k)** Wait for at least 3 minutes, then turn the ignition ON.
- 6l)** Access Dealership Mode following steps provided in **6b)** above and confirm the software update completed successfully using the table below:

*Continued...*

### 2020MY Version Table

<b>Model</b>	<b>MSOC Version</b>
High	F11GHM042-380
Mid	F11GMM042-380
<b>Model</b>	<b>DSP Version</b>
High/Mid	02.26.08
<b>Model</b>	<b>VCPU Version</b>
High/Mid	F11GHV020-501

- Confirm and record the software version number installed on the RO.

**6m)** Turn the ignition OFF, open the driver’s door then close the driver’s door to complete the update procedure.

**VERY IMPORTANT:** After the CCM reprogramming procedure is complete, **ALWAYS** confirm proper back-up camera operation before releasing the vehicle.

### SERVICE PROGRAM IDENTIFICATION LABEL:

Type or print the necessary information on a Campaign Identification Label. The completed label should be attached to the vehicle’s upper radiator support. Additional labels are available through normal parts ordering channels. The part number is **MSA6P1302**, which comes as one sheet of 20 labels.

Part Number	Applicability	Description	Order Quantity
MSA6P1302	All Models	Campaign Completion Labels (contains one sheet of 20 labels)	1

<b>SUBARU</b>
Campaign Code
<b>WRH-20</b>
COMPLETED
DIST./DEALER NO.
SERIAL NO.
<b>DO NOT REMOVE</b>

*Continued...*

## CLAIM REIMBURSEMENT AND ENTRY PROCEDURES:

Credit to perform this recall will be based on properly completed repair order information. Retailers may submit claims through [Subarunet.com](http://Subarunet.com).

Labor Description	Labor Operation #	Labor Time	Fail Code
WRH-20- SOFTWARE VERSION CHECK ONLY	A131-128	0.2	WRH-20
WRH-20- CCM REPLACEMENT (An additional 0.2 allowance has been set up in system for Retailers when satellite (SXM) reactivation is required.)	A131-631	0.6	
WRH-20- SOFTWARE UPDATE / REPROGRAMMING	A131-108	0.6	

A **ONE-TIME** charge of **\$30.00** can be claimed in sublet to cover the cost of the USB flash drives.

## IMPORTANT REMINDERS:

- SOA strongly discourages the printing and/or local storage of service information as previously released information and electronic publications may be updated at any time.
- Always check for any open recalls or campaigns anytime a vehicle is in for servicing.
- Always refer to STIS for the latest service information before performing any repairs.

*Continued...*

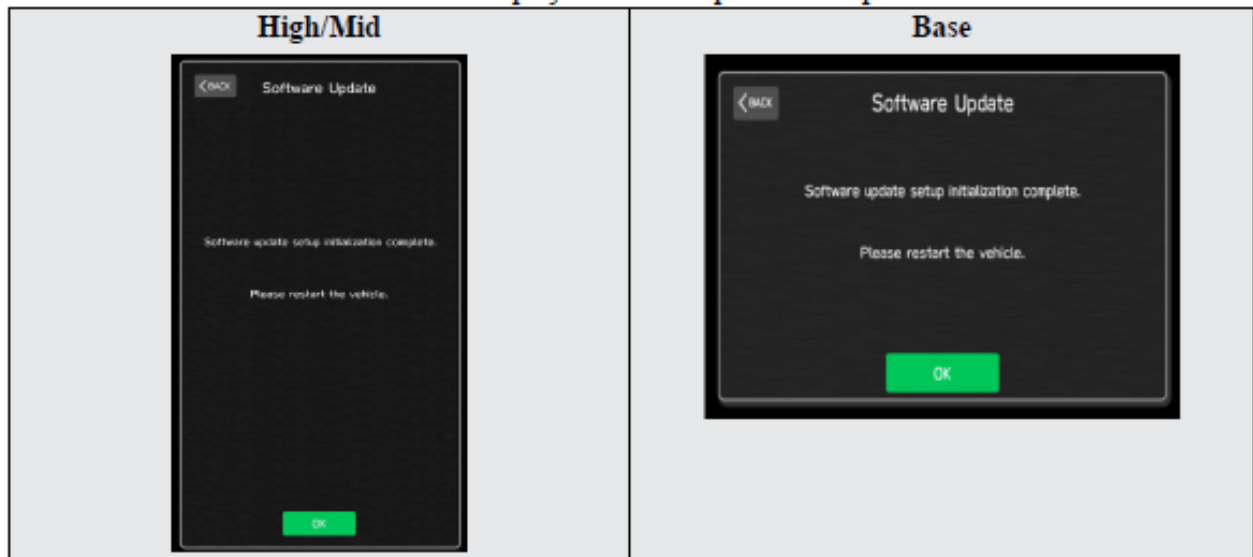
## “APPENDIX A”

Follow this procedure in the RARE case of “Software update setup is initializing...” message is displayed:

- If the screen shown below appears, **WAIT** for approximately 15 minutes or as long as necessary to allow the Software update setup initialization process to complete.



- The screens shown below will be displayed when the process completes.



1. Turn the ignition OFF, open the driver's door, close the driver's door and **WAIT** for 3 or more minutes before proceeding further.
2. Open the driver's door again and either turn the ignition ON (if a charger is connected) or start the engine.
3. Go to Dealership Mode menu again (PRESS and HOLD the RIGHT-side temperature control buttons (both up and down) and press the Tune / Scroll knob 6 times then release all to display the Dealership Mode) and select Software Update as in STEP 3 beginning on pg. 8.

**IMPORTANT NOTE:** If this procedure is required, contact Techline as additional action may be necessary.

*Continued...*





**SUBARU**  
Subaru of America, Inc.  
P.O. Box 9103  
Camden, NJ 08101-9877  
844-373-6614  
www.subaru.com

## **URGENT**

### **IMPORTANT SAFETY RECALL**

This notice applies to the VIN identified in the address section printed below

**Subaru Safety Recall WRH-20**

**NHTSA ID 20V-766**

**January 2021**

#### **Dear Subaru Owner:**

This notice is sent to you in accordance with the National Traffic and Motor Vehicle Safety Act.

SUBARU OF AMERICA, INC. has decided that a defect, which relates to motor vehicle safety, exists in certain 2020 model year Legacy and Outback vehicles.

You received this notice because our records indicate that you currently own one of these vehicles.

#### **REASON FOR THIS RECALL**

A firmware-over-the-air (FOTA) update to the Cockpit Control Module (CCM) software in your vehicle may have timed out during the update. A timeout during the data writing sequence could cause the data to become corrupted, and if corrupted, may result in the Center Information Display (CID) going blank.

The failure to display the rearview image in the timing specified and/or periodic loss of rearview image creates a noncompliance with the requirements of FMVSS 111 – Rear Visibility, increasing the risk of a crash.

#### **WHAT SUBARU WILL DO**

Subaru will reprogram the CCM software in your vehicle at no charge to you. If the CID is not properly displaying, the CCM will be replaced with an improved part at no charge to you.

#### **WHAT YOU SHOULD DO**

Please contact your Subaru retailer (dealer) immediately for an appointment to have this repair performed, free of charge.

Until this repair is performed, please use caution when driving in reverse if the rearview image is not displayed. You should always check the rear view and the surrounding area by turning your head rearward and/or using the mirrors and move backward at a slow speed.

#### **HOW LONG WILL THE REPAIR TAKE?**

The actual time to reprogram the CCM software is less than 40 minutes. However, it may be necessary to leave your vehicle for a longer period of time on the day of your scheduled appointment to allow your Subaru retailer flexibility in scheduling. If the CID is not properly displaying, a CCM will need to be ordered by your retailer. For your convenience, your retailer may provide you with a loaner or rental vehicle, at no cost to you.

#### **OWNER INFORMATION**

Government regulations require that recall notifications be sent to the last known owner of record. That information is based primarily on state registration and title data. If you are a lessor of this vehicle, federal regulations require you to forward this notice to your lessee within ten days.

If you have moved or sold your vehicle, please update this information online at [www.subaru.com](http://www.subaru.com), select 'Customer Support,' then select 'Address Update' or 'Ownership Update' from the "Quick Links" menu.

*Continued...*

## **IF YOU HAVE PREVIOUSLY PAID FOR A REPAIR**

If you have already paid for repairs associated with this coverage, you may be eligible for reimbursement. Reimbursement consideration will be based on the amount an authorized Subaru retailer in your area would charge for the same repair.

Please send the original service repair order, which has the name of the repair facility, date of repair, mileage at the time of repair, complete 17-digit vehicle identification number (VIN), and your name, with correct mailing address and telephone number to the address listed below.

**Subaru of America, Inc.  
Customer Advocacy Department, Attention: WRH-20 Recall  
P.O. Box 9103, Camden, NJ 08101-9877**

Please send original receipts only and retain a photocopy for your records. Please be assured that we will attempt to process your reimbursement request as quickly as possible, but it may take up to 60 days for this process to be completed.

## **IF YOU NEED FURTHER ASSISTANCE:**

To locate the nearest Subaru retailer, you can access our website at [www.subaru.com](http://www.subaru.com) and select 'Find a Retailer.'

For additional information, please go to: <http://www.wrh20.service-campaign.com>.

If you need additional assistance, please contact us directly:

- By e-mail: Go to [www.subaru.com](http://www.subaru.com) and select "Contact Us"
- By telephone: 1-844-373-6614  
Monday through Friday between 8:00 a.m. and 7:00 p.m. ET
- By U.S. Postal mail: Write us at Subaru of America, Inc.  
Attn: Customer Advocacy Department  
P.O. Box 9103, Camden, NJ 08101-9877

To subscribe to the NHTSA Recall Notification email System, please go to: <https://www-odi.nhtsa.dot.gov/nhtsa/subscriptions>.

Please contact us immediately if the Subaru retailer fails or is unable to make the necessary repairs free of charge.

You may also contact the Administrator, National Highway Traffic Safety Administration (NHTSA), 1200 New Jersey Ave., SE, Washington, DC 20590 or call the toll-free Vehicle Safety Hotline at 1-888-327-4236 (TTY: 1-800-424-9153) or go to <http://www.safercar.gov> if you believe the Subaru retailer has failed or is unable to remedy your vehicle without charge within a reasonable amount of time.

Your continued satisfaction with your Subaru is important to us. Please understand that we have taken this action in the interest of your safety and your vehicle's proper operation. We sincerely apologize for any inconvenience this matter may cause and urge you to schedule an appointment as soon as possible.

Sincerely,  
Subaru of America, Inc.

*A subsidiary of SUBARU CORPORATION*