



INFINITI

TECHNICAL SERVICE BULLETIN

| | | |
|------------------------------|--------------------------|------------------------|
| Classification: RS22-004A | Reference: ITB22-021A | Date: March 9, 2023 |
|------------------------------|--------------------------|------------------------|

SEAT BELT REMINDER SERVICE INFORMATION

This bulletin has been amended. See AMENDMENT HISTORY on the last page.
Please discard previous versions of this bulletin.

APPLIED VEHICLES: 2022-2023 QX60 (L51)
 2021-2023 QX80 (Z62)

SERVICE INFORMATION

In the **APPLIED VEHICLES**, there are a variety of Seat Belt Warning Lights and Chimes. Refer to the information in this bulletin, along with the related vehicle owner's manual.

Seat Belt Warning Light for driver and front passenger.



Figure 1

Infiniti Bulletins are intended for use by qualified technicians, not 'do-it-yourselfers'. Qualified technicians are properly trained individuals who have the equipment, tools, safety instruction, and know-how to do a job properly and safely. **NOTE:** If you believe that a described condition may apply to a particular vehicle, DO NOT assume that it does. See your Infiniti retailer to determine if this applies to your vehicle.

Seat Belt Warning for Rear (Second and Third Row only, with Second Row Bench Seat).

- Red X displays for unbuckled status.

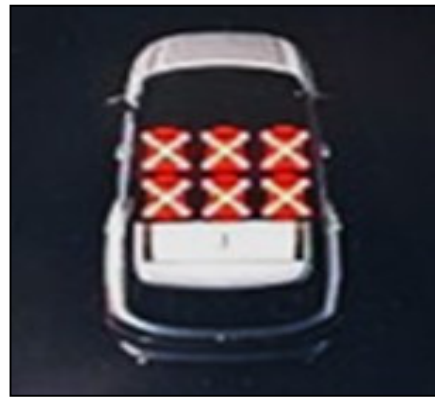


Figure 2

Seat Belt Warning for Rear (Second and Third Row only, with Second Row Bucket Seats).

- Red X displays for unbuckled status.



Figure 3

Seat Belt Warning for Rear (Second and Third Row only, with Second Row Bucket Seats).

- Red X displays for unbuckled status.
- Gray/Green seat displays for buckled status.

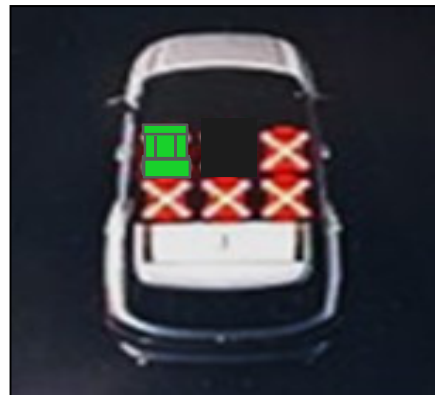


Figure 4

Functionality of the Rear Seat Belt Reminder - Vehicle Stationary:

- After turning the ignition ON with the vehicle stationary (not moving), the Vehicle Information Display image will display a status of unbuckled (Red X) for both a buckled or unbuckled rear seat (**Table 1**).
- The driver has the ability to temporarily dismiss the Visual Indicator through the Vehicle Information Display by scrolling to a different menu.

Table 1

| VEHICLE CONDITION/ SPEED | REAR SEAT OCCUPANCY/SEAT BELT BUCKLE CONDITION | REAR SEAT BELT REMINDER | | | |
|-------------------------------------|--|--|-------------------------------------|--------|----------|
| | | Visual Indicator | | Chime | |
| | | Graphic Logic | Duration | ON/OFF | Duration |
| Stationary After Ignition Turned ON | Empty Seat | Red with X | 65 seconds from ignition ON (1) (2) | OFF | N/A |
| | Occupied and Change From Unbuckled to Buckled | Change from Red X to Gray/Green for corresponding seating position | 65 seconds from ignition ON (1) (2) | OFF | N/A |

- (1) The Visual Indicator is automatically dismissed approximately 65 seconds from ignition ON.
- (2) The Visual Indicator can be temporarily dismissed through the Vehicle Information Display by scrolling to a different menu.

Functionality of the Rear Seat Belt Reminder - Vehicle Moving:

- After turning the ignition ON and driving the vehicle, the Vehicle Information Display image will display as described in Table 2.
- The driver has the ability to temporarily dismiss the Visual Indicator through the Vehicle Information Display by scrolling to a different menu.

Table 2

| VEHICLE CONDITION/ SPEED | REAR SEAT OCCUPANCY/SEAT BELT BUCKLE CONDITION (ANY SEATING POSITION) | REAR SEAT BELT REMINDER | | | |
|-----------------------------|---|--|------------------------------------|--------|--|
| | | Visual Indicator | | Chime | |
| | | Graphic Logic | Duration | ON/OFF | Duration |
| Moving Below 10 MPH | Change from Buckled to Unbuckled | Reminder Displays Corresponding Seating Position with Red X | 95 seconds from unbuckling (1) (2) | OFF | N/A |
| Moving Above 10 MPH | | | | ON | 95 seconds |
| Moving Below 10 MPH | Change from Unbuckled to Buckled | Reminder Displays Corresponding Seating Position with Red X, then Gray/Green | Disappears after buckling | OFF | N/A |
| Moving Above 10 MPH | | | | OFF | Chime stops immediately after buckling |

- (1) The Visual Indicator is automatically dismissed approximately 95 seconds from unbuckling.
- (2) The Visual Indicator can be temporarily dismissed through the Vehicle Information Display by scrolling to a different menu.

AMENDMENT HISTORY

| PUBLISHED DATE | REFERENCE | DESCRIPTION |
|----------------|------------|---------------------------------|
| April 28, 2022 | ITB22-021 | Original bulletin published |
| March 9, 2023 | ITB22-021A | APPLIED VEHICLES revised |