

4700
4800
4900
5700

6900
47X
> 49X

Western Star
Service Bulletin

Description of Revisions: *This bulletin replaces the version dated 09/12/2022. The general information has been updated.*

General Information

This service bulletin describes required maintenance system parameter changes that apply to Western Star 49X vehicles with Detroit® DT12 transmissions used for line haul applications. This service bulletin applies to vehicles built between November 2020 to May 2022. Vehicles in line haul applications receive a maintenance due warning light at around 186,000 mi (299 274 km) instead of 600,000 mi (965 400 km).

NOTE: Predictive maintenance information is used to calculate oil change frequency. Actual oil change frequency may vary depending on driving conditions.

Procedure

1. Park the vehicle on a level surface, shut down the engine, and set the parking brake. Chock the tires.
2. Connect a laptop with DiagnosticLink® to the vehicle diagnostic connector.

IMPORTANT: Make sure that DiagnosticLink version 8.17 SP1 or later is installed on the laptop before programming the vehicle.

3. Turn the ignition key to the RUN position.
4. Open DiagnosticLink.
5. Go to 'Program Device,' and make sure that the vehicle identification number (VIN) is correct. Select 'Download data from server.' See [Fig. 1](#).

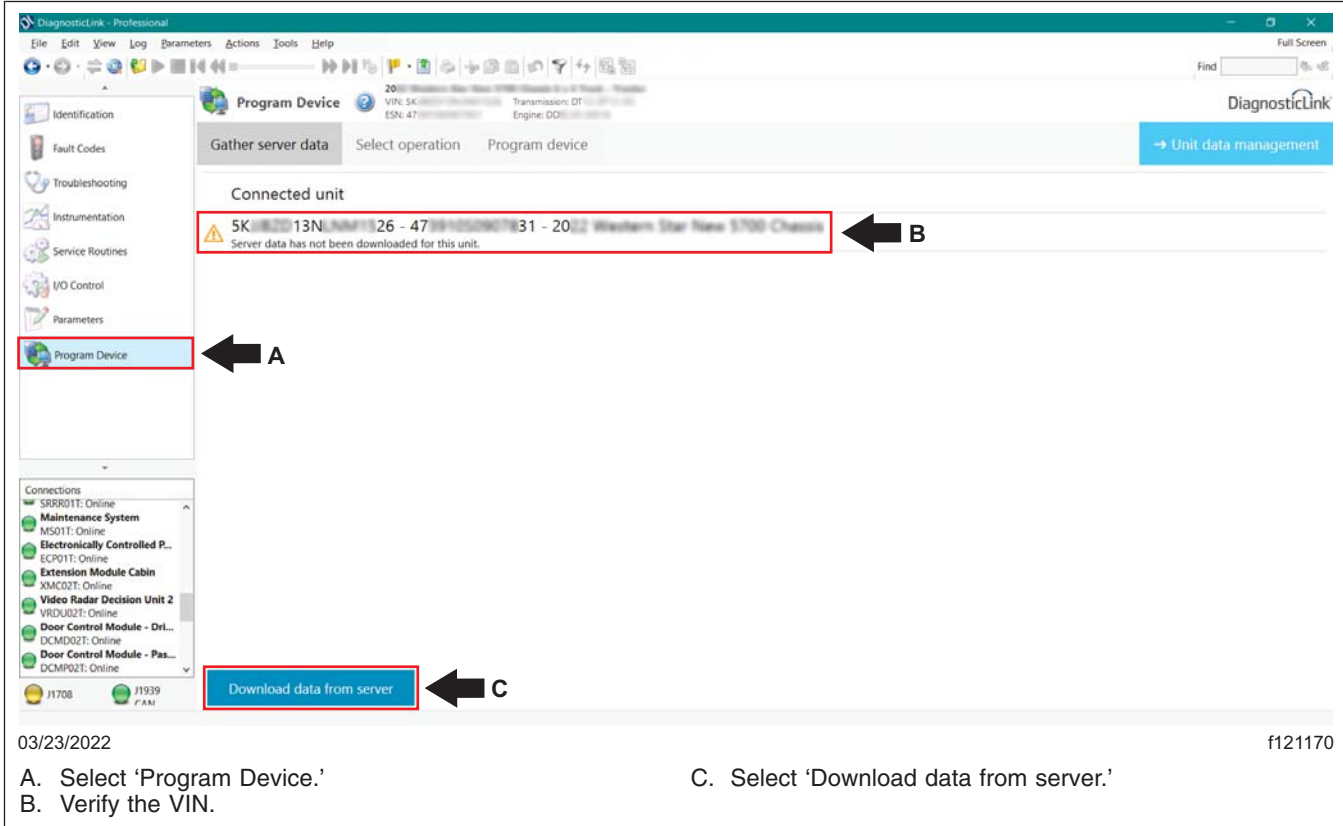


Fig. 1, Downloading Data from the Server

6. After the server data download is complete, go to the 'Parameters' tab. In the 'All Parameters' tab, go to the 'MS01T- Maintenance System,' 'Transmission, Parameters, EEPROM.' See [Fig. 2](#).

4700 6900
 4800 47X
 4900 > 49X
 5700

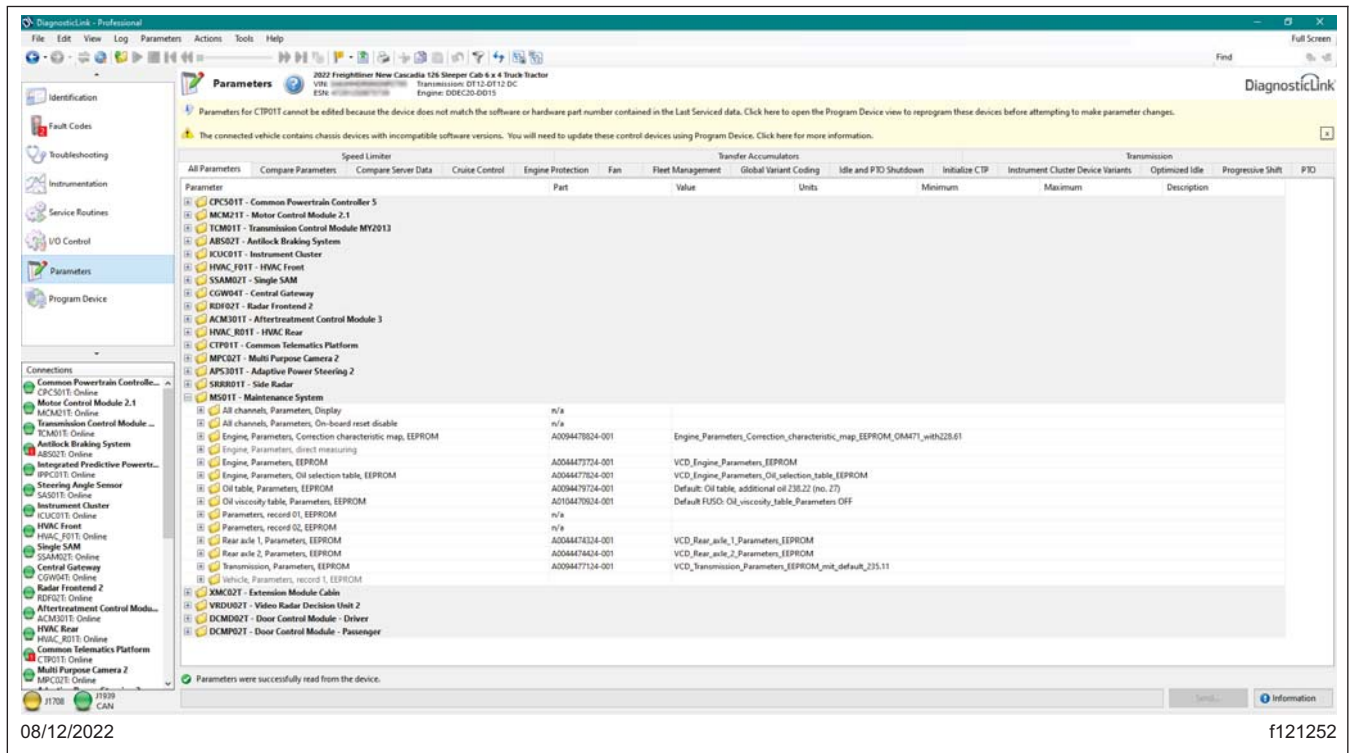


Fig. 2, Navigating to MS01T - Maintenance System

7. Select the correct parameter for the application. Select 'Oil selection table, row 02, maximum driving distance (PAR_ OatZ02FsMax_GET).' Select parameter 'A0074472324-001 Oil selection row 02, NAFTA, extended interval, 600k miles.' For line haul applications, select 'A0074472324-001 Oil selection row 02, NAFTA, extended interval, 600k miles.' See [Fig. 3](#).

4700
4800
4900
5700

6900
47X
> 49X

Parameters for CTR01T cannot be edited because the device does not match the software or hardware part number contained in the Last Serviced data. Click here to open the Program Device view to reprogram these devices before attempting to make parameter changes.

The connected vehicle contains chassis devices with incompatible software versions. You will need to update these control devices using Program Device. Click here for more information.

Parameter	Part	Value	Units	Minimum	Maximum	Description
Oil selection table, row 02, maximum driving distance (PAR_Oa2202dMax_GET)	A004477024-001	VCD_Engine_Parameters_Oil_selection_table_EEPROM				Detatype: Parameters, Channel...
Oil selection table, row 02, maximum driving distance (PAR_Oa2202dMax_GET)	A004479224-001	A004479224-001				Detatype: Parameters, Channel...
Oil selection table, row 02, maximum driving distance (PAR_Oa2202dMax_GET)	A0104470624-001	Default FUSO_Oil_viscosity_table_Parameters OFF				Detatype: Parameters, Channel...
Oil selection table, row 02, maximum driving distance (PAR_Oa2202dMax_GET)	n/a	n/a				Detatype: Parameters, Channel...
Oil selection table, row 02, maximum driving distance (PAR_Oa2202dMax_GET)	A004476324-001	VCD_Rear_axle_1_Parameters_EEPROM				Detatype: Parameters, Channel...
Oil selection table, row 02, maximum driving distance (PAR_Oa2202dMax_GET)	A004477124-001	VCD_Transmission_Parameters_EEPROM_mit_default_235.11				Detatype: Parameters, Channel...
Oil selection table, row 02, maximum driving distance (PAR_Oa2202dMax_GET)	(from parent)	122	°F			Detatype: Parameters, Channel...
Oil selection table, row 02, maximum driving distance (PAR_Oa2202dMax_GET)	(from parent)	50	h			Detatype: Parameters, Channel...
Oil selection table, row 02, maximum driving distance (PAR_Oa2202dMax_GET)	(from parent)	104	%			Detatype: Parameters, Channel...
Oil selection table, row 02, maximum driving distance (PAR_Oa2202dMax_GET)	(from parent)	307	%			Detatype: Parameters, Channel...
Oil selection table, row 02, maximum driving distance (PAR_Oa2202dMax_GET)	(from parent)	2				Detatype: Parameters, Channel...
Oil selection table, row 02, maximum driving distance (PAR_Oa2202dMax_GET)	(from parent)	26075.9	miles			Detatype: Parameters, Channel...
Oil selection table, row 02, maximum driving distance (PAR_Oa2202dMax_GET)	(from parent)	1095	day			Detatype: Parameters, Channel...
Oil selection table, row 02, maximum driving distance (PAR_Oa2202dMax_GET)	(from parent)	65395	h			Detatype: Parameters, Channel...
Oil selection table, row 02, maximum driving distance (PAR_Oa2202dMax_GET)	(from parent)	0				Detatype: Parameters, Channel...
Oil selection table, row 02, maximum driving distance (PAR_Oa2202dMax_GET)	(from parent)	7				Detatype: Parameters, Channel...
Oil selection table, row 02, maximum driving distance (PAR_Oa2202dMax_GET)	A0074472124-001	Extended interval 600k miles	miles			Detatype: Parameters, Channel...
Oil selection table, row 02, maximum driving distance (PAR_Oa2202dMax_GET)	A0114470724-001	Oil selection table, row 02, maximum driving distance (PAR_Oa2202dMax_GET) 60TKM				Detatype: Parameters, Channel...
Oil selection table, row 02, maximum driving distance (PAR_Oa2202dMax_GET)	(from parent)	A0114470524-001	Oil selection table, row 02, maximum driving distance (PAR_Oa2202dMax_GET) 120TKM			Detatype: Parameters, Channel...
Oil selection table, row 02, maximum driving distance (PAR_Oa2202dMax_GET)	A004477124-001	A0114470624-001	Oil selection table, row 02, maximum driving distance (PAR_Oa2202dMax_GET) 160TKM			Detatype: Parameters, Channel...
Oil selection table, row 02, maximum driving distance (PAR_Oa2202dMax_GET)	(from parent)	A0114470624-001	Oil selection table, row 02, maximum driving distance (PAR_Oa2202dMax_GET) 240TKM			Detatype: Parameters, Channel...
Oil selection table, row 02, maximum driving distance (PAR_Oa2202dMax_GET)	(from parent)	A007447224-001	Oil selection table, row 02, maximum driving distance (PAR_Oa2202dMax_GET) 300 miles			Detatype: Parameters, Channel...
Oil selection table, row 02, maximum driving distance (PAR_Oa2202dMax_GET)	(from parent)	A0074472424-001	Oil selection table, row 02, maximum driving distance (PAR_Oa2202dMax_GET) 300 km			Detatype: Parameters, Channel...
Oil selection table, row 02, maximum driving distance (PAR_Oa2202dMax_GET)	(from parent)	A004476324-001	Oil selection table, row 02, maximum driving distance (PAR_Oa2202dMax_GET) 400 miles			Detatype: Parameters, Channel...
Oil selection table, row 02, maximum driving distance (PAR_Oa2202dMax_GET)	(from parent)	A0074470124-001	Oil selection table, row 02, maximum driving distance (PAR_Oa2202dMax_GET) 400 miles			Detatype: Parameters, Channel...
Oil selection table, row 02, maximum driving distance (PAR_Oa2202dMax_GET)	(from parent)	A0074471324-001	Oil selection table, row 02, maximum driving distance (PAR_Oa2202dMax_GET) 400 miles			Detatype: Parameters, Channel...
Oil selection table, row 02, maximum driving distance (PAR_Oa2202dMax_GET)	(from parent)	37282.7	miles			Detatype: Parameters, Channel...
Oil selection table, row 02, maximum driving distance (PAR_Oa2202dMax_GET)	(from parent)	1825	day			Detatype: Parameters, Channel...
Oil selection table, row 02, maximum driving distance (PAR_Oa2202dMax_GET)	(from parent)	65395	h			Detatype: Parameters, Channel...
Oil selection table, row 02, maximum driving distance (PAR_Oa2202dMax_GET)	(from parent)	0				Detatype: Parameters, Channel...
Oil selection table, row 02, maximum driving distance (PAR_Oa2202dMax_GET)	(from parent)	13				Detatype: Parameters, Channel...
Oil selection table, row 02, maximum driving distance (PAR_Oa2202dMax_GET)	(from parent)	37282.7	miles			Detatype: Parameters, Channel...
Oil selection table, row 02, maximum driving distance (PAR_Oa2202dMax_GET)	(from parent)	1825	day			Detatype: Parameters, Channel...

Parameters were successfully read from the device.

08/12/2022 f121251

Fig. 3, Selecting Extended 600k Mile Interval

8. Select the 'Send' button to write the parameter change to the vehicle. See Fig. 4.

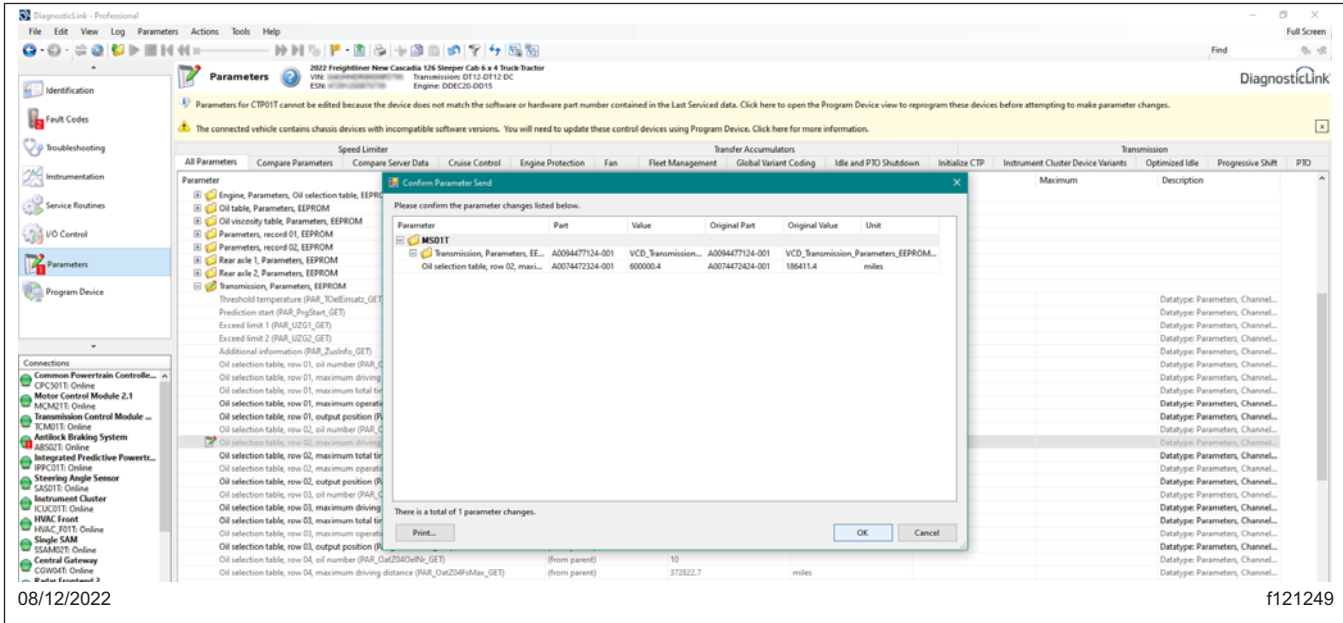


Fig. 5, Confirming Parameter Changes

10. Go to the 'Program Device' tab, and select 'Unit data management' in the upper-right corner. See Fig. 6.

4700
4800
4900
5700

6900
47X
> 49X

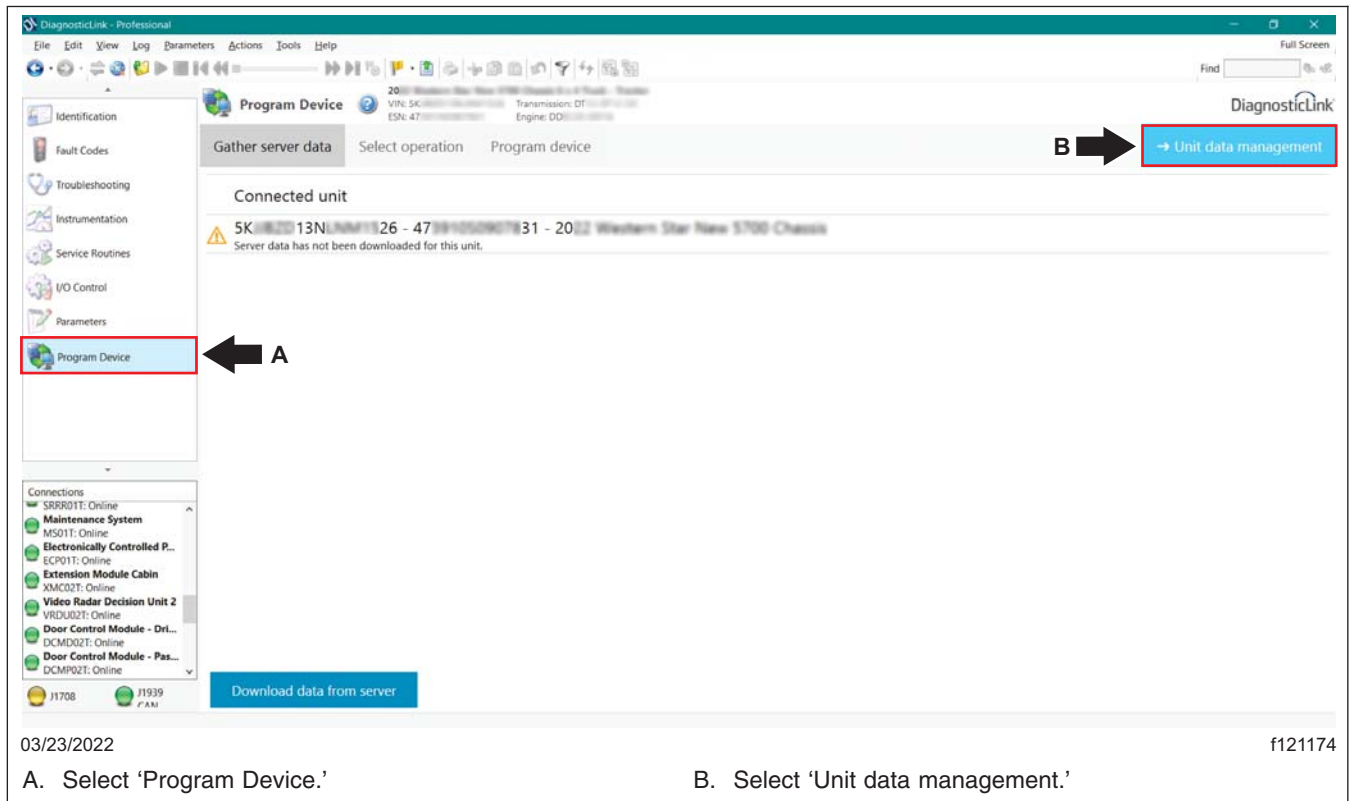


Fig. 6, Selecting Unit Data Management

11. The information corresponding to the VIN should appear under 'Unit data for upload.' Select 'Connect to server' to upload the new parameters. See [Fig. 7](#).

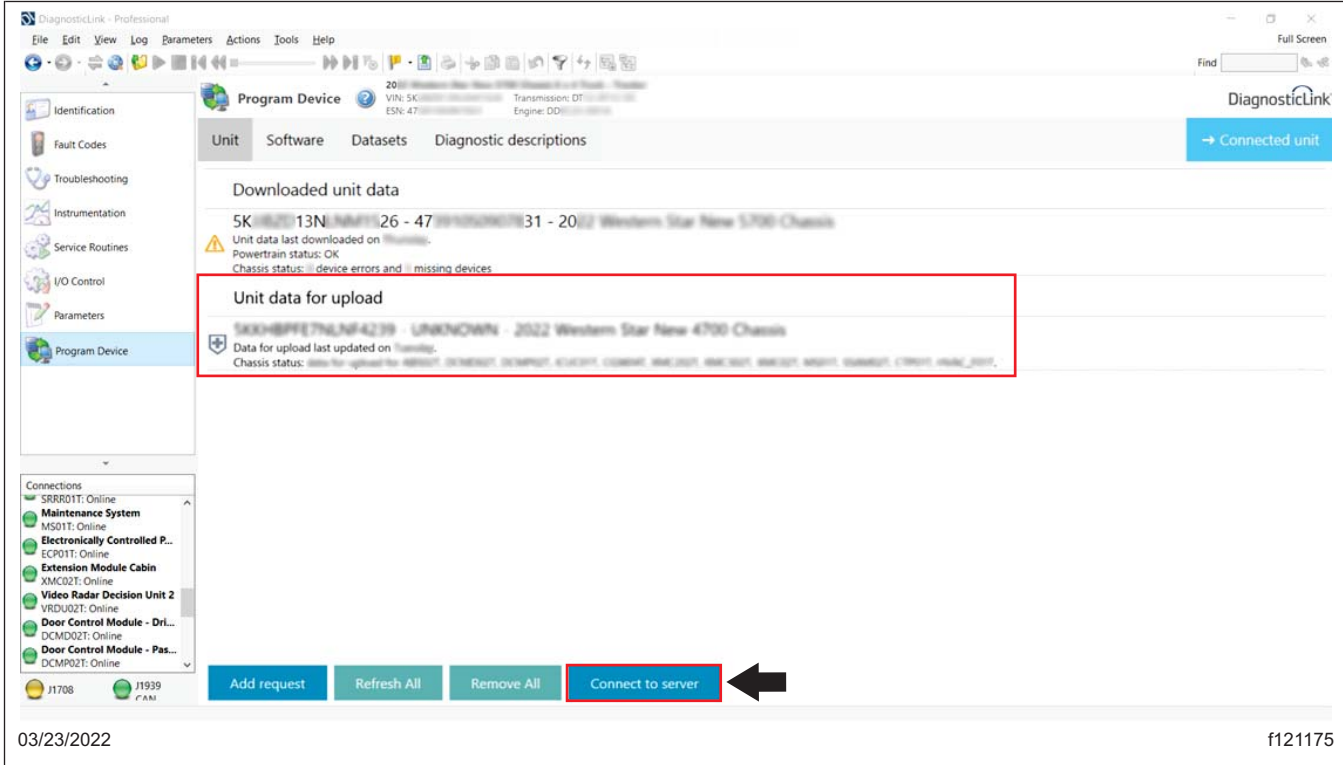


Fig. 7, Uploading the New Parameters

12. Once the parameter updates are made, disconnect from DiagnosticLink.
13. Turn the ignition key to the OFF position.
14. Disconnect the laptop.

Warranty

This procedure is warrantable only if the described condition exists and the repair is performed within the applicable base or extended coverage warranty period. If a failure is not found, this procedure is considered preventive and warranty does not apply.

Normal warranty applies. See [Table 1](#) for OWL VMRS codes and labor allowance information. Enter this service bulletin number in the *Service Bulletin #* field.

OWL VMRS Codes and Labor Allowance						
Primary Failed Part	Component Code	Cause Code	Correction Code	SRT Code	Description	Time: Hours
SOFTWARE	003-006-018	95	29	343-5021A	DT12 Oil Change Interval Parameter Update, (SBW54-087)	0.4

Table 1, OWL VMRS Codes and Labor Allowance