

Field campaign

Topic	Exhaust Flap Control unit - Left and Right hand - Serial number check (SC23/09)
Market area	Australia E04 Bentley rest Asia and Australia (6E04),China 796 VW Import Comp. Ltd (Vico), Beijing (6796),Germany E02 Bentley rest Europe (6E02),Japan E03 Bentley Japan (6E03),United Arab Emirates E06 Bentley Middle East and Africa (6E06),United Kingdom E01 Bentley UK (6E01),United States E05 Bentley USA and rest America (6E05)
Brand	Bentley
Transaction No.	2069824/1
Campaign number	EC74
Note	
Type	
US code	

Vehicle data

New GT/C and New Flying Spur

Sales types

Type	MY	Brand	Designation	Engine code	Gearbox code	Final drive code
3S3*	2023	E		*	*	*
3S4*	2023	E		*	*	*
ZG2*	2023	E		*	*	*

Chassis numbers

Manufacturer	Filler	Type	Filler	MY	Factory	From	To	Prod from	Prod to
SCB	*	*	*	P	C	005822	007419		

Documents

Document name
master.xml
sc2309vinlist.pdf
serialnumbers.xlsx

Notes



Technical background

Refer to the Remedy section

Remedy

- The exhaust flap control unit 2 -J945- is located on the LEFT hand exhaust silencer tail pipe
- The exhaust flap control unit -J883- is located on the RIGHT hand exhaust silencer tail pipe

The left and right hand exhaust control units must be removed from the rear silencers to allow the serial numbers of each control unit to be identified

Once identified the serial numbers must be cross referenced with the attached spreadsheet to confirm if the control units require replacement or not



IMPORTANT: For this Service campaign only the rear exhaust silencers do not require removal to allow the removal of J945 and J883, please refer to the instructions within the Work section

Customer notification

The instructions within the Work should be conducted at the nearest opportunity, make a note of the required action on the workshop order before it is signed by the customer

If it is omitted to perform the work required during a workshop visit, the customer should be notified immediately

You should also pass on this information to your new and used car sales departments so that affected vehicles are checked and repaired immediately

Warranty accounting instructions

Warranty type 710 or 790

Damage service number EC74

Damage code 00 66

Criterion ID 01

New Flying Spur

60TU left - 26 71 19 04 (Use 99 index until 27/04/23)

60TU right - 26 71 19 03 (Use 99 index until 27/04/23)

Basic settings - 01 50 00 **03** as per ODIS log must not exceed 10 TU

New GT/C

50TU left - 26 71 19 04 (Use 99 index until 27/04/23)

50TU right - 26 71 19 03 (Use 99 index until 27/04/23)

Basic settings - 01 50 00 **03** as per ODIS log must not exceed 10 TU

Genuine parts

3SA 133 246 - Exhaust flap control unit (*see note below*)

In the event that one or both of the exhaust flap control unit serial numbers are evident within the attached spreadsheet the operative must replace one or both exhaust actuators accordingly

However

In the event the exhaust flap control unit serial numbers are not evident within the attached spreadsheet the exhaust flap control units do not require replacement

Parts supply

The required replacement parts must be ordered from Bentley Motors Limited Crewe or through your regional Bentley parts distribution centre

Parts despatch control

Not applicable

Repair instructions



Technical background

Refer to the Remedy section

Check

If the vehicle is not already listed as repaired in "Repair history" (in Elsa pro), check for the presence of the red paint completion mark within the Identification section (Figure 9)

If neither are evident please conduct the instructions within the Work section to completion

Genuine parts

3SA 133 246 - Exhaust flap control unit (*see note below*)

In the event that one or both of the exhaust flap control unit serial numbers are evident within the attached spreadsheet the operative must replace one or both exhaust actuators accordingly

However

In the event the exhaust flap control unit serial numbers are not evident within the attached spreadsheet the exhaust flap control units do not require replacement

Tools

Torque wrench 3/8 or 1/4 drive, the torque wrench must be able to achieve 8 Nm

HINT: For the rework procedure within this document a small headed 3/8 drive torque wrench with a 3/8 short 12 point 10mm socket was used successfully

Work

NOTICE

The instructions are similar regardless of model type however New Flying Spur models require extra steps as detailed at the end of the work section

CAUTION

Please ensure the exhaust system has sufficiently cooled before commencing work

New Continental GT/C

1) Referring to Rep,Gr 66 - Remove the rear diffuser

Left hand side

- Disconnect the electrical connector
- Referring to Figure 1 - Release the exhaust centre pipe collar fixings
- Undo the rear silencer support plate

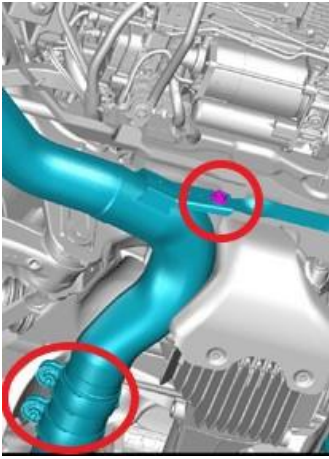


Figure 1

2) With the aid of an assistant the exhaust silencer should be twisted/turned to allow access to the control unit fixings

- Remove the fixings (x3)
- Remove the control unit
- Referring to Figure 2 - Identify the serial numbers from the control unit



Figure 2

Referring to Figure 3 - Open the spreadsheet located within the auxiliary document section

- Use the find function by selecting "Ctrl f" on the keyboard
- Insert the serial number into the box shown - Select Find Next

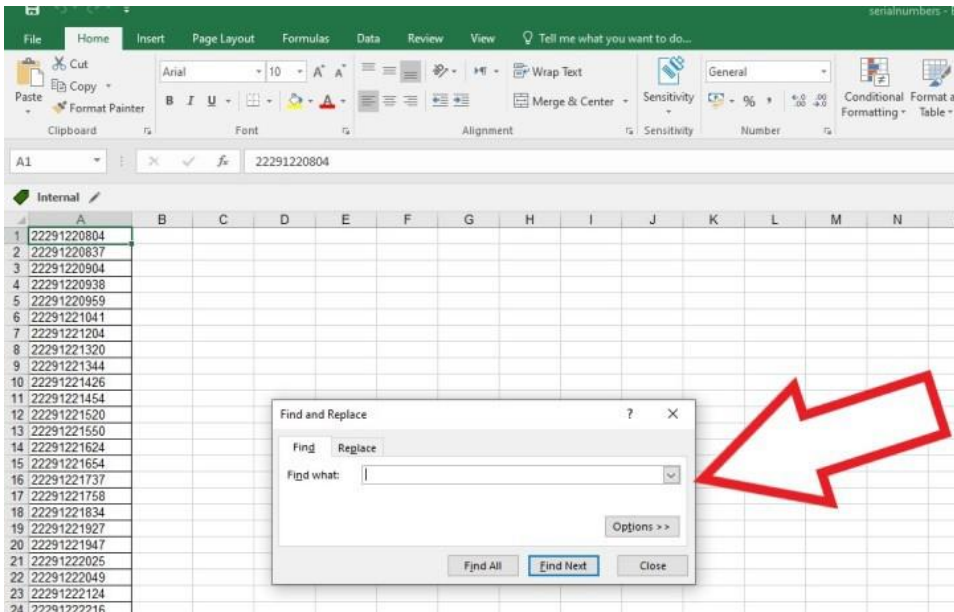


Figure 3

In the event the serial numbers are evident within the spreadsheet renew the exhaust actuator (see Genuine parts section)

Or

In the event the serial numbers are not evident continue with the remaining instructions to completion



IMPORTANT: Take a photograph of the following serial numbers, the following will be required later within the process

- Original control unit serial numbers
- Replacement serial numbers (if replaced)
- Photograph of the left and right rear silencer serial numbers (Figure 4)

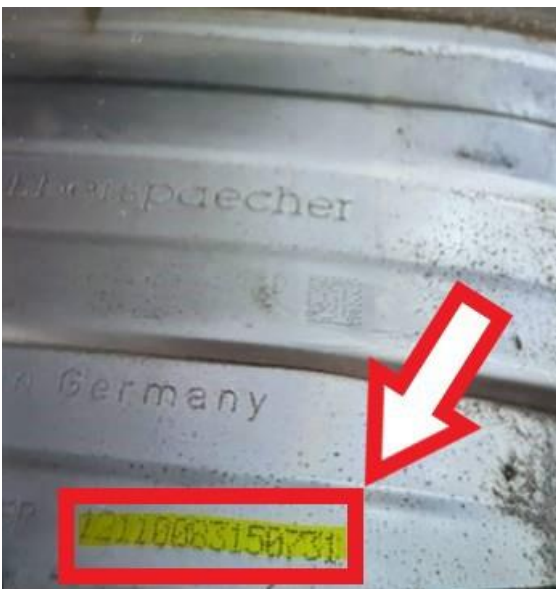


Figure 4

3) Fit the actuator - When reinstalling the exhaust flap control unit, ensure the operating gear is correctly located into the exhaust flap gear

- Torque tighten the (x3) fixings to 8 Nm (Figure 5)



Figure 5

- Reconnect the electrical connection
- 4) Refit the rear silencer support plate fixing
- Referring to Rep.Gr 26 - Refit the exhaust centre pipe collar fixings

NOTICE

Ensure the instructions within Rep.Gr 26 are strictly followed in particular the following:

- Orientation of the collars
- Torque value of the collar fixings as the torque value varies depending on the part number of the collar

Right hand side

- 5) Repeat steps 1 through to 4 on the right hand side
- 6) Fit the Control unit - When reinstalling the exhaust flap control unit, ensure the operating gear is correctly located into the exhaust flap gear
- Torque tighten the (x3) fixings to 8 Nm

Both sides continued

- 7) Referring to Rep.Gr 66 - Refit the rear diffuser
- 8) Place a red paint completion mark on the left and right hand control unit electric connections (Refer to the Identification section)
- 9) Using ODIS navigate to - Engine address 01 - guided functions- conduct the basic setting routine for the following:
- The exhaust flap control unit 2 J945
 - The exhaust flap control unit J883
- 10) Raise a non technical DISS query ensuring the following is attached:
- Original control unit serial numbers
 - Replacement serial numbers (if replaced)
 - Photograph of the left and right rear silencer serial numbers (Figure 4)

New Flying Spur

The instructions for New Flying Spur are the same as New Continental GT/C apart from the following:

- Apply masking to the left and right rear silencer finishing trims and rear bumper aperture (Figure 6)

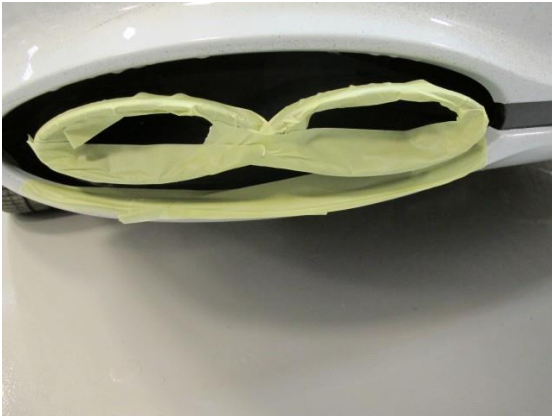


Figure 6

- Refer to Rep.Gr 27 - Tail pipe finishers - Undo the tail pipe finisher fixings
- The rear silencer fixing requires removal to allow the silencer to be lowered (Figure 7)

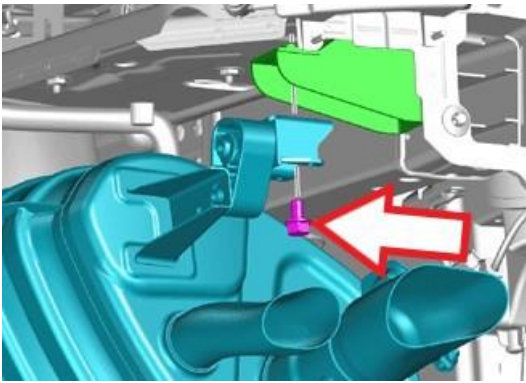


Figure 7

- Manoeuvre the tail pipe finisher forwards and away from the rear bumper (Figure 8) taking care not to damage the bumper and/or tailpipe finisher

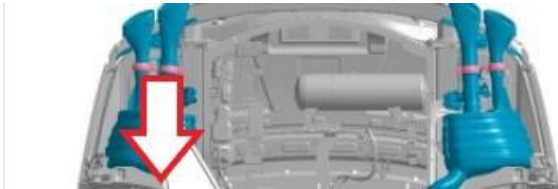


Figure 8

! NOTICE

Once the control unit serial numbers have been confirmed refit all previously removed parts as per the instructions within the Work section and Rep.Gr 27 instructions

Identification

Red paint completion mark on the left and right hand Exhaust flap control unit connector (For clarity Figure 9 shows one side only)

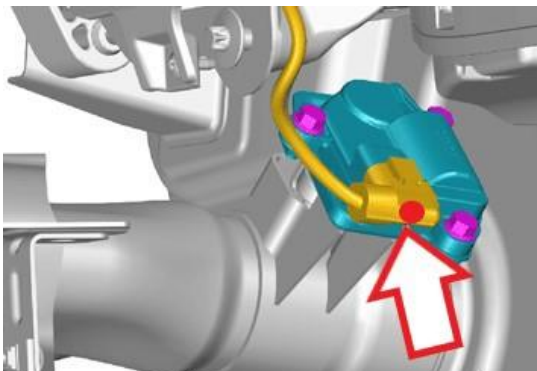


Figure 9

SCBBX53S7PC005822	SCBCG2ZG4PC005976	SCBCG2ZG0PC006090	SCBCG2ZG8PC006189	SCBDG4ZG3PC006293
SCBCG2ZG1PC005823	SCBDX33S2PC005983	SCBCG2ZG4PC006092	SCBCG2ZGXPC006193	SCBCG2ZG7PC006295
SCBB153S9PC005824	SCBBK53S4PC005985	SCBB15ZG8PC006093	SCBDG4ZG5PC006196	SCBDH33S3PC006296
SCBC11ZG0PC005825	SCBDG4ZG7PC005986	SCBDG4ZG8PC006094	SCBDG4ZG9PC006198	SCBBK53SXPC006297
SCBBK53S8PC005827	SCBC11ZG6PC005991	SCBCX13S2PC006096	SCBCG2ZG0PC006199	SCBDX33S5PC006299
SCBCX13S1PC005828	SCBBB6ZG4PC005994	SCBBG6ZGXPC006097	SCBDG4ZG7PC006202	SCBBB6ZG5PC006300
SCBBG6ZG9PC005829	SCBDG4ZGXPC005996	SCBC113S4PC006098	SCBBK53S8PC006203	SCBCK13S1PC006301
SCBBB6ZG9PC005831	SCBBB6ZGXPC005997	SCBBK53S6PC006099	SCBDG4ZG2PC006205	SCBBK53S1PC006303
SCBDG4ZG1PC005837	SCBDG4ZG5PC005999	SCBDG4ZGXPC006100	SCBDX33S7PC006207	SCBDG4ZG6PC006305
SCBCJ13S2PC005841	SCBBB6ZG4PC006000	SCBBX53S9PC006101	SCBBX53S5PC006208	SCBCX13S0PC006307
SCBBB6ZG5PC005843	SCBDX33S9PC006001	SCBDG4ZG5PC006103	SCBBK53S0PC006213	SCBD133S4PC006313
SCBBK53SXPC005845	SCBBK53S9PC006002	SCBDG4ZG0PC006106	SCBCX13S4PC006214	SCBCX13S8PC006314
SCBDG4ZG2PC005846	SCBCK13S4PC006003	SCBCK13S5PC006107	SCBCG2ZG0PC006218	SCBCK13S5PC006317
SCBC11ZG1PC005848	SCBDG4ZG3PC006004	SCBD13ZG1PC006109	SCBBK53SXPC006221	SCBBK53S3PC006318
SCBC11ZG7PC005854	SCBCX13SXPC006007	SCBCG2ZG2PC006110	SCBCG2ZG2PC006222	SCBDG4ZG6PC006319
SCBCG2ZG0PC005859	SCBDG4ZG2PC006009	SCBCG2ZG8PC006113	SCBBK53S3PC006223	SCBCG2ZG2PC006320
SCBDG4ZG0PC005862	SCBCG2ZG9PC006010	SCBBG6ZG1PC006117	SCBCG2ZGXPC006226	SCBBB6ZG2PC006321
SCBCG2ZG6PC005865	SCBBB6ZG9PC006011	SCBDG4ZG7PC006118	SCBDG4ZG1PC006227	SCBBG6ZG2PC006322
SCBBG6ZG4PC005866	SCBCG2ZG4PC006013	SCBCG2ZG9PC006119	SCBBG6ZGXPC006228	SCBCG2ZG1PC006325
SCBBB6ZG1PC005869	SCBBB6ZG4PC006014	SCBBK53S4PC006120	SCBDG4ZG1PC006230	SCBBK53S2PC006326
SCBDG4ZGXPC005870	SCBDG4ZG8PC006015	SCBCG2ZG2PC006124	SCBDG4ZG7PC006233	SCBCG2ZG9PC006329
SCBDG4ZG5PC005873	SCBCG2ZGXPC006016	SCBBK53S3PC006125	SCBB15ZG2PC006235	SCBBX53S2PC006330
SCBBK53S5PC005882	SCBBB6ZGXPC006017	SCBDX33S7PC006126	SCBDG4ZG2PC006236	SCBD13ZG2PC006331
SCBDG4ZG8PC005883	SCBBB6ZGXPC006020	SCBCK13S0PC006127	SCBC113S3PC006237	SCBBB6ZG0PC006334
SCBCG2ZG3PC005886	SCBDX33S4PC006021	SCBDG4ZG1PC006132	SCBDX33S9PC006239	SCBDG4ZG4PC006335
SCBBB6ZG7PC005889	SCBDX33S8PC006023	SCBCX13S4PC006133	SCBC11ZGXPC006240	SCBCJ13S7PC006337
SCBDG4ZG5PC005890	SCBCK13S1PC006024	SCBBK53S4PC006134	SCBBK53S5PC006241	SCBBK53S9PC006338
SCBDX33SXPC005892	SCBBB6ZG2PC006027	SCBD133S6PC006135	SCBDG4ZG8PC006242	SCBDG4ZG1PC006339
SCBBB6ZG9PC005893	SCBDG4ZG6PC006028	SCBCG2ZG9PC006136	SCBBK53S9PC006243	SCBB15ZGXPC006340
SCBDG4ZG4PC005895	SCBBB6ZG6PC006029	SCBDG4ZG2PC006138	SCBBK53S2PC006245	SCBBK53S0PC006342
SCBDG4ZG8PC005897	SCBCK13S7PC006030	SCBBG6ZG0PC006142	SCBDG4ZG5PC006246	SCBDX33S4PC006343
SCBCJ13S0PC005899	SCBBX53S2PC006036	SCBCX13S7PC006143	SCBB15ZG9PC006247	SCBCG2ZG7PC006345
SCBDG4ZG6PC005901	SCBBX53S6PC006038	SCBDX33S0PC006145	SCBCG2ZG9PC006248	SCBBB6ZG7PC006346
SCBDG4ZGXPC005903	SCBCG2ZG0PC006039	SCBC11ZG9PC006147	SCBBB6ZG9PC006249	SCBDG4ZG0PC006347
SCBBK53S8PC005908	SCBDG4ZG7PC006040	SCBBX53S2PC006148	SCBDG4ZG7PC006250	SCBBK53S1PC006348
SCBDG4ZG0PC005909	SCBCG2ZG4PC006044	SCBDG4ZG7PC006149	SCBBK53S8PC006251	SCBB15ZG2PC006350
SCBB15ZG2PC005912	SCBBB6ZGXPC006048	SCBBB6ZG1PC006150	SCBCX13S1PC006252	SCBDG4ZG2PC006351
SCBCX13S7PC005915	SCBCX13S1PC006056	SCBCG2ZG5PC006151	SCBDG4ZG4PC006254	SCBBK53S3PC006352
SCBCX13S4PC005919	SCBBK53S1PC006057	SCBDK33S1PC006153	SCBCK13S0PC006256	SCBCK13S9PC006353
SCBDG4ZG1PC005921	SCBCK13S9PC006059	SCBDG4ZG6PC006157	SCBDG4ZGXPC006257	SCBBK53S0PC006356
SCBC11ZG4PC005925	SCBBK53S1PC006060	SCBCX13S0PC006159	SCBBK53S0PC006258	SCBC113S2PC006357
SCBBB6ZG9PC005926	SCBDG4ZG4PC006061	SCBBG6ZG2PC006160	SCBBK53S9PC006260	SCBBK53S4PC006358
SCBBB6ZG4PC005929	SCBBH53S7PC006062	SCBDG4ZG8PC006161	SCBDG4ZG1PC006261	SCBDG4ZG7PC006359
SCBDX33S7PC005932	SCBCG2ZG8PC006063	SCBDG4ZG5PC006165	SCBDG4ZG9PC006265	SCBCX13S4PC006360
SCBCG2ZGXPC005934	SCBBB6ZG8PC006064	SCBB15ZG2PC006168	SCBBG6ZG7PC006266	SCBBK53S4PC006361
SCBBK53S4PC005940	SCBDG4ZG1PC006065	SCBDG4ZG2PC006169	SCBDG4ZG6PC006269	SCBDX33S8PC006362
SCBDG4ZG8PC005947	SCBCG2ZG5PC006067	SCBBK53SXPC006171	SCBC11ZGXPC006271	SCBCK13S5PC006365
SCBDX33S2PC005949	SCBBK53S6PC006068	SCBDG4ZG2PC006172	SCBDG4ZG8PC006273	SCBDH33S9PC006366
SCBBB6ZG8PC005951	SCBDG4ZG9PC006069	SCBCK13S9PC006174	SCBBK53S2PC006276	SCBCG2ZG8PC006368
SCBB15ZG7PC005954	SCBBK53S4PC006070	SCBDG4ZGXPC006176	SCBDG4ZG5PC006277	SCBCG2ZGXPC006369
SCBDG4ZG7PC005955	SCBDG4ZG0PC006073	SCBCG2ZG3PC006178	SCBDG4ZG9PC006279	SCBBG6ZG6PC006372
SCBCG2ZG9PC005956	SCBBB6ZG0PC006074	SCBDX33S2PC006180	SCBCX13S6PC006280	SCBDG4ZG1PC006373
SCBCG2ZG2PC005958	SCBCX13S9PC006077	SCBBG6ZGXPC006181	SCBDG4ZG7PC006281	SCBCX13S4PC006374
SCBC11ZG6PC005960	SCBDG4ZG1PC006079	SCBDG4ZG7PC006183	SCBCK13S1PC006282	SCBC11ZG6PC006378
SCBBB6ZG0PC005961	SCBBK53S7PC006080	SCBCG2ZG9PC006184	SCBCG2ZG0PC006283	SCBBK53S1PC006379
SCBDG4ZGXPC005965	SCBCG2ZGXPC006081	SCBC11ZG6PC006185	SCBBG6ZG0PC006285	SCBDG4ZG2PC006382
SCBBK53S2PC005970	SCBBB6ZG1PC006083	SCBDG4ZG2PC006186	SCBBG6ZG6PC006288	SCBBK53S3PC006383
SCBC11ZG0PC005971	SCBCG2ZG9PC006086	SCBBB6ZG2PC006187	SCBB15ZG1PC006291	SCBCK13S9PC006384
SCBBX53S8PC005974	SCBDG4ZG2PC006088	SCBDG4ZG6PC006188	SCBCK13S4PC006292	SCBBK53S9PC006386

SCBC11ZG7PC006387	SCBDG4ZGXPC006484	SCBB15ZG2PC006574	SCBCG2ZG3PC006679	SCBBG6ZG8PC006776
SCBBG6ZGXPC006388	SCBCX13S2PC006485	SCBDG4ZGXPC006579	SCBBX53S7PC006680	SCBB15ZG5PC006780
SCBDG4ZG5PC006389	SCBDG4ZG5PC006487	SCBBB6ZG4PC006580	SCBCX13S2PC006681	SCBDX33SXP006783
SCBBK53S6PC006393	SCBCK13SXP006488	SCBDG4ZGXPC006582	SCBDK33S8PC006683	SCBCJ13S1PC006785
SCBC11ZG4PC006394	SCBCX13SXP006489	SCBDX33S6PC006585	SCBCK13SXP006684	SCBB15ZG6PC006786
SCBBK53SXP006395	SCBCX13S8PC006491	SCBDX33S1PC006588	SCBCG2ZG0PC006686	SCBCK13S9PC006787
SCBCK13S7PC006397	SCBDG4ZG9PC006492	SCBDG4ZG0PC006591	SCBB15ZG4PC006687	SCBBG6ZG4PC006788
SCBBK53S5PC006398	SCBBG6ZG7PC006493	SCBB15ZG4PC006592	SCBCX13S5PC006688	SCBDX33S0PC006789
SCBBK53SXP006400	SCBCX13S3PC006494	SCBCK13S7PC006593	SCBBK53S1PC006690	SCBBX53S3PC006790
SCBDK33S5PC006401	SCBDG4ZG6PC006496	SCBDG4ZG6PC006594	SCBCK13S7PC006691	SCBCK13S0PC006791
SCBC11ZGXPC006402	SCBCG2ZG8PC006497	SCBCX13S0PC006596	SCBCX13S0PC006694	SCBB15ZG1PC006792
SCBBK53S5PC006403	SCBCG2ZG4PC006500	SCBDG4ZG1PC006597	SCBDX33S2PC006695	SCBCK13S4PC006793
SCBCX13S9PC006404	SCBDG4ZG1PC006504	SCBCK13S6PC006598	SCBCK13S8PC006697	SCBCX13SXP006797
SCBCX13S0PC006405	SCBBG6ZGXPC006505	SCBDG4ZG8PC006600	SCBCK13SXP006698	SCBDG4ZG0PC006798
SCBBK53S0PC006406	SCBCX13S6PC006506	SCBCX13S0PC006601	SCBDX33SXP006699	SCBCJ13S4PC006800
SCBDX33S4PC006407	SCBBB6ZG5PC006507	SCBDG4ZG1PC006602	SCBC11ZG7PC006700	SCBC113S8PC006802
SCBBK53S4PC006408	SCBDG4ZG9PC006508	SCBBK53S2PC006603	SCBCX13S4PC006701	SCBCG2ZG0PC006803
SCBCX13S8PC006409	SCBBG6ZG7PC006509	SCBDG4ZG5PC006604	SCBCJ13S4PC006702	SCBDX33S5PC006805
SCBBK53S6PC006412	SCBDG4ZG4PC006514	SCBCG2ZG7PC006605	SCBDX33S8PC006703	SCBBG6ZG2PC006806
SCBCK13S1PC006413	SCBB15ZG1PC006517	SCBDG4ZG9PC006606	SCBBX53S6PC006704	SCBC11ZG3PC006807
SCBCX13S5PC006416	SCBDG4ZG1PC006518	SCBCG2ZG2PC006608	SCBCX13S1PC006705	SCBBG6ZG4PC006810
SCBBK53S9PC006419	SCBBK53S2PC006519	SCBDG4ZG4PC006609	SCBCX13S5PC006707	SCBCX13S0PC006811
SCBCK13S9PC006420	SCBCK13S2PC006520	SCBCX13S3PC006611	SCBCK13S7PC006710	SCBBX53S2PC006814
SCBBK53S7PC006421	SCBBG6ZG1PC006523	SCBDG4ZG4PC006612	SCBDX33S7PC006711	SCBC113S6PC006815
SCBBK53S0PC006423	SCBDX33S5PC006528	SCBBG63S6PC006613	SCBCK13S4PC006714	SCBBK53S8PC006816
SCBCK13S6PC006424	SCBBK53S5PC006529	SCBDG4ZGXPC006615	SCBBX53S2PC006716	SCBDG4ZG2PC006821
SCBBK53S6PC006426	SCBDG4ZG2PC006530	SCBDG4ZG5PC006618	SCBCG2ZG7PC006717	SCBCG2ZG4PC006822
SCBC113S8PC006427	SCBCG2ZG6PC006532	SCBC113S2PC006620	SCBDG4ZG9PC006718	SCBBG6ZG2PC006823
SCBB15ZG4PC006429	SCBDG4ZGXPC006534	SCBBG6ZG3PC006622	SCBCX13S1PC006719	SCBDX33S9PC006824
SCBC11ZG4PC006430	SCBBK53S0PC006535	SCBCX13SXP006623	SCBDX33SXP006721	SCBCX13S0PC006825
SCBDG4ZG0PC006431	SCBCG2ZG3PC006536	SCBBX53SXP006625	SCBCK13S7PC006724	SCBC11ZG9PC006827
SCBCG2ZG4PC006433	SCBDK33S8PC006537	SCBCK13S9PC006627	SCBC11ZG1PC006725	SCBCG2ZG5PC006828
SCBDX33S7PC006434	SCBCG2ZG9PC006539	SCBCJ13S5PC006630	SCBBG6ZG4PC006726	SCBB15ZG9PC006829
SCBCK13S2PC006436	SCBDX33S6PC006540	SCBBX53S5PC006631	SCBDX33S4PC006729	SCBCG2ZG7PC006832
SCBBX53S0PC006438	SCBBG6ZG3PC006541	SCBDG4ZG5PC006635	SCBCK13S4PC006731	SCBCG2ZG0PC006834
SCBCG2ZG5PC006439	SCBCX13SXP006542	SCBCX13S8PC006636	SCBBX53S4PC006734	SCBDX33S3PC006835
SCBCG2ZG5PC006442	SCBBK53SXP006543	SCBCX13S1PC006638	SCBCX13SXP006735	SCBCX13S5PC006836
SCBDG4ZG7PC006443	SCBCK13S5PC006544	SCBDG4ZG2PC006639	SCBCX13S3PC006737	SCBCG2ZG8PC006838
SCBCG2ZG0PC006445	SCBC113S5PC006546	SCBCJ13SXP006641	SCBBX53SXP006740	SCBB15ZGXPC006841
SCBBB6ZG2PC006447	SCBBK53S7PC006547	SCBDX33S3PC006642	SCBCX13S5PC006741	SCBD133S9PC006842
SCBCG2ZG6PC006448	SCBDX33S0PC006548	SCBCX13S5PC006643	SCBCK13S9PC006742	SCBCK13S4PC006843
SCBDX33S9PC006449	SCBBG6ZG8PC006549	SCBCJ13S9PC006646	SCBDX33S9PC006743	SCBBX53S0PC006844
SCBCX13S7PC006451	SCBC113S7PC006550	SCBCX13S2PC006647	SCBBK53S9PC006744	SCBCX13S6PC006845
SCBDX33S9PC006452	SCBDG4ZG1PC006552	SCBBX53S0PC006648	SCBBG6ZG1PC006747	SCBC113S6PC006846
SCBDG4ZG3PC006455	SCBBG6ZGXPC006553	SCBDG4ZG7PC006653	SCBCK13SXP006748	SCBBX53S6PC006847
SCBBK53S4PC006456	SCBCG2ZG5PC006554	SCBB15ZG0PC006654	SCBC11ZG4PC006752	SCBDX33S1PC006848
SCBC11ZG2PC006457	SCBDG4ZG7PC006555	SCBCK13S3PC006655	SCBDG4ZG0PC006753	SCBC113S1PC006849
SCBDG4ZG0PC006459	SCBBG6ZG5PC006556	SCBBG6ZG0PC006657	SCBCX13S3PC006754	SCBCX13SXP006850
SCBBK53S6PC006460	SCBCX13S1PC006557	SCBCG2ZG6PC006658	SCBDG4ZG6PC006756	SCBDX33S9PC006855
SCBCX13SXP006461	SCBDG4ZG2PC006558	SCBDX33S9PC006659	SCBC11ZG3PC006757	SCBCJ13S9PC006856
SCBDG4ZG6PC006465	SCBBG6ZG0PC006559	SCBCX13S7PC006661	SCBDX33S0PC006758	SCBBG6ZG8PC006857
SCBBG6ZG4PC006466	SCBDG4ZG2PC006561	SCBBK53S9PC006663	SCBBX53S2PC006764	SCBDX33S4PC006858
SCBCX13S0PC006467	SCBCG2ZG6PC006563	SCBDX33S4PC006665	SCBCX13S8PC006765	SCBCK13S4PC006860
SCBDG4ZG1PC006468	SCBBK53S9PC006565	SCBCX13S8PC006670	SCBCG2ZG0PC006767	SCBCX13S4PC006861
SCBBK53S2PC006469	SCBCK13S4PC006566	SCBCX13S1PC006672	SCBCK13S7PC006769	SCBCX13S8PC006863
SCBCK13S2PC006470	SCBDG4ZG3PC006567	SCBDJ33S1PC006673	SCBBG6ZG7PC006770	SCBBG6ZG5PC006864
SCBCX13S1PC006476	SCBBG6ZG1PC006568	SCBCX13S5PC006674	SCBDX33S3PC006771	SCBCX13S3PC006866
SCBDX33S5PC006481	SCBCG2ZG7PC006572	SCBDG4ZG6PC006675	SCBCG2ZG6PC006773	SCBCG2ZG4PC006867
SCBB15ZGXPC006483	SCBDG4ZG9PC006573	SCBDX33S2PC006678	SCBDG4ZG8PC006774	SCBCK13S9PC006868

SCBCG2ZG6PC006871	SCBBK53S0PC006955	SCBBK53S9PC007036	SCBBK53S9PC007151	SCBCG2ZG8PC007231
SCBDG4ZG8PC006872	SCBCG2ZG3PC006956	SCBC11ZG7PC007040	SCBDG4ZG1PC007152	SCBBK53S9PC007232
SCBCG2ZGXPC006873	SCBDX33S6PC006957	SCBCX13S4PC007041	SCBBK53S2PC007153	SCBDG4ZG1PC007233
SCBBK53S0PC006874	SCBCX13S8PC006958	SCBB15ZG7PC007042	SCBBK53S6PC007155	SCBCK13S8PC007235
SCBCG2ZG3PC006875	SCBBK53S8PC006959	SCBD133S8PC007044	SCBDG4ZG9PC007156	SCBDX33S8PC007236
SCBBG6ZG1PC006876	SCBC113S6PC006961	SCBCK13S5PC007046	SCBCG2ZG2PC007158	SCBBK53S8PC007237
SCBCX13SXPC006878	SCBCX13SXPC006962	SCBCX13S5PC007047	SCBBX53S1PC007159	SCBCK13S3PC007238
SCBCX13S1PC006879	SCBDX33S1PC006963	SCBBK53S5PC007048	SCBC113SXPC007160	SCBBX53SXPC007239
SCBDX33S1PC006882	SCBCK13S5PC006964	SCBB153SXPC007050	SCBBX53SXPC007161	SCBDG4ZG9PC007240
SCBCX13S3PC006883	SCBBK53S7PC006967	SCBCG2ZG8PC007052	SCBDK33S7PC007162	SCBDX33S3PC007242
SCBCJ13S3PC006884	SCBDX33S0PC006968	SCBDJ33S9PC007053	SCBCX13S9PC007164	SCBCG2ZG4PC007243
SCBBG6ZG2PC006885	SCBBK53S0PC006969	SCBCX13S2PC007054	SCBDG4ZGXPC007165	SCBBX53S5PC007245
SCBDX33S9PC006886	SCBCX13S9PC006970	SCBBX53S0PC007055	SCBCG2ZG5PC007168	SCBCG2ZGXPC007246
SCBBG6ZG6PC006887	SCBCX13S4PC006973	SCBCX13S6PC007056	SCBCX13S8PC007169	SCBB153S7PC007247
SCBCX13S2PC006888	SCBBX53S2PC006974	SCBBB6ZG5PC007057	SCBDX33S4PC007170	SCBCG2ZG3PC007248
SCBB153S9PC006889	SCBCX13S8PC006975	SCBCX13S1PC007059	SCBCJ13S6PC007172	SCBDG4ZG5PC007249
SCBCK13S2PC006890	SCBDG4ZG9PC006976	SCBDX33SXPC007061	SCBDX33SXPC007173	SCBCG2ZG1PC007250
SCBBB6ZGXPC006891	SCBCG2ZG2PC006978	SCBCX13S3PC007063	SCBBG6ZG7PC007174	SCBCX13S6PC007252
SCBCG2ZG3PC006892	SCBC11ZG8PC006981	SCBBX53S1PC007064	SCBCX13S9PC007178	SCBDX33SXPC007254
SCBBX53S2PC006893	SCBB15ZG6PC006982	SCBBK53S5PC007065	SCBBK53S9PC007179	SCBB15ZG2PC007255
SCBBG6ZG5PC006895	SCBC113S5PC006983	SCBDX33S0PC007070	SCBBK53S7PC007181	SCBCK13S5PC007256
SCBCK13S3PC006896	SCBDX33S9PC006984	SCBBB6ZGXPC007071	SCBCG2ZG1PC007183	SCBDG4ZG4PC007257
SCBB15ZG6PC006898	SCBCX13S2PC006986	SCBBK53S2PC007072	SCBDG4ZG5PC007185	SCBBG6ZG2PC007258
SCBCK13S9PC006899	SCBCX13S4PC006987	SCBCX13S6PC007073	SCBCG2ZG7PC007186	SCBBK53S7PC007262
SCBBX53S8PC006901	SCBDG4ZG5PC006988	SCBDG4ZG9PC007075	SCBBG6ZG5PC007187	SCBCK13S2PC007263
SCBDX33S2PC006907	SCBDG4ZG5PC006991	SCBB15ZG2PC007076	SCBCX13S1PC007188	SCBBG6ZG8PC007264
SCBCK13S6PC006908	SCBCX13S1PC006994	SCBDX33S3PC007077	SCBBX53SXPC007189	SCBDG4ZG3PC007265
SCBCG2ZG5PC006909	SCBBG6ZG9PC006995	SCBBK53S3PC007078	SCBCK13S5PC007192	SCBBK53S4PC007266
SCBBK53S2PC006911	SCBDG4ZG4PC006996	SCBCX13S7PC007079	SCBCG2ZG6PC007194	SCBC113S6PC007267
SCBCX13S6PC006912	SCBBB6ZG4PC006997	SCBC11ZG1PC007082	SCBDG4ZG8PC007195	SCBDG4ZG7PC007270
SCBBG6ZG3PC006913	SCBC11ZG3PC006998	SCBBX53S7PC007084	SCBBG6ZG6PC007196	SCBCK13S1PC007271
SCBCX13SXPC006914	SCBBB6ZG0PC007001	SCBBG6ZGXPC007086	SCBCG2ZG1PC007197	SCBDG4ZG0PC007272
SCBBK53SXPC006915	SCBCX13S5PC007002	SCBDX33SXPC007111	SCBB15ZG5PC007198	SCBBG6ZG9PC007273
SCBDX33S5PC006917	SCBDG4ZG6PC007003	SCBCX13S1PC007112	SCBDG4ZG5PC007199	SCBC11ZGXPC007274
SCBCX13S7PC006918	SCBBG6ZG4PC007004	SCBCX13S3PC007113	SCBBX53S5PC007200	SCBC113S5PC007275
SCBCX13S9PC006919	SCBDG4ZG1PC007006	SCBBK53S3PC007114	SCBCK13S2PC007201	SCBCX13S2PC007278
SCBBG6ZG0PC006920	SCBCX13S8PC007009	SCBDX33S7PC007115	SCBCX13S4PC007203	SCBCX13S4PC007279
SCBDX33S7PC006921	SCBBK53S2PC007010	SCBCX13S9PC007116	SCBBX53S2PC007204	SCBCK13S2PC007280
SCBBX53S7PC006923	SCBDG4ZG5PC007011	SCBDK33S2PC007117	SCBDX33S8PC007205	SCBCX13S6PC007283
SCBCG2ZG5PC006926	SCBC113S6PC007012	SCBC113S0PC007118	SCBBG6ZG5PC007206	SCBCX13S8PC007284
SCBCX13S8PC006927	SCBDG4ZG9PC007013	SCBBK53S2PC007119	SCBBK53S3PC007209	SCBCX13S1PC007286
SCBDG4ZG0PC006929	SCBCX13S3PC007015	SCBCX13S6PC007123	SCBC113SXPC007210	SCBDX33S5PC007288
SCBBB6ZG5PC006930	SCBBG6ZG0PC007016	SCBCK13S1PC007125	SCBDG4ZG2PC007211	SCBBK53S5PC007289
SCBC11ZG4PC006931	SCBBK53S5PC007017	SCBDX33S3PC007127	SCBCG2ZG4PC007212	SCBC11ZG8PC007290
SCBDG4ZG0PC006932	SCBCJ13S7PC007018	SCBDG4ZG2PC007130	SCBBK53S5PC007213	SCBDX33S5PC007291
SCBCX13S3PC006933	SCBBX53S7PC007019	SCBCG2ZG4PC007131	SCBCX13S9PC007214	SCBCK13S9PC007292
SCBCX13S7PC006935	SCBC113S5PC007020	SCBCJ13S7PC007133	SCBCK13S6PC007217	SCBBK53S7PC007293
SCBDG4ZGXPC006937	SCBC11ZG5PC007022	SCBBG6ZG6PC007134	SCBB15ZG7PC007218	SCBCK13S2PC007294
SCBBX53S9PC006938	SCBDK33S4PC007023	SCBCG2ZG1PC007135	SCBCX13S8PC007219	SCBBK53S0PC007295
SCBC113S2PC006939	SCBBG6ZGXPC007024	SCBC11ZG0PC007137	SCBBX53S2PC007221	SCBDG4ZG3PC007296
SCBBX53S7PC006940	SCBC11ZG0PC007025	SCBB15ZG9PC007138	SCBDG4ZG7PC007222	SCBBB6ZG3PC007297
SCBBG6ZGXPC006942	SCBDG4ZG7PC007026	SCBCX13SXPC007139	SCBBK53S8PC007223	SCBCX13S8PC007298
SCBDG4ZG7PC006944	SCBB15ZG0PC007027	SCBC113S6PC007141	SCBCX13S1PC007224	SCBCX13S2PC007300
SCBC113SXPC006946	SCBDX33S3PC007029	SCBDG4ZG0PC007143	SCBDJ33S1PC007225	SCBBK53S2PC007301
SCBDX33S5PC006948	SCBBX53S6PC007030	SCBBG6ZG9PC007144	SCBBG6ZG0PC007226	SCBBK53S6PC007303
SCBBG6ZG2PC006949	SCBCX13S1PC007031	SCBCG2ZG4PC007145	SCBCJ13S5PC007227	SCBCK13S1PC007304
SCBCX13S3PC006950	SCBCX13S3PC007032	SCBBK53S5PC007146	SCBCX13S9PC007228	SCBBX53S8PC007305
SCBBK53S7PC006953	SCBDG4ZG6PC007034	SCBDX33S9PC007147	SCBBK53S9PC007229	SCBDX33S3PC007306
SCBCX13S0PC006954	SCBC11ZG3PC007035	SCBC11ZG5PC007148	SCBDG4ZG6PC007230	SCBBK53S3PC007307

SCBC11ZG1PC007308	SCBBX53S9PC007331	SCBCX13S9PC007357	SCBDG4ZG5PC007381	SCBCJ13S6PC007401
SCBCJ13S7PC007309	SCBCG2ZG3PC007332	SCBCG2ZG1PC007359	SCBCG2ZG7PC007382	SCBB15ZG0PC007402
SCBDX33S7PC007311	SCBCG2ZG7PC007334	SCBBK53S7PC007360	SCBBK53S8PC007383	SCBDJ33SXP007403
SCBBK53S9PC007313	SCBDX33SXP007335	SCBCG2ZGXPC007361	SCBCK13S3PC007384	SCBCG2ZG2PC007404
SCBCJ13S0PC007314	SCBBX53S1PC007338	SCBCK13S6PC007363	SCBBK53S1PC007385	SCBBK53S5PC007406
SCBDX33S4PC007315	SCBCX13S7PC007339	SCBBK53S6PC007365	SCBCK13S7PC007386	SCBCX13S0PC007408
SCBBK53S4PC007316	SCBBX53SXP007340	SCBDX33S1PC007367	SCBBB6ZG4PC007387	SCBBK53S0PC007409
SCBCX13S8PC007317	SCBBK53S5PC007342	SCBBX53SXP007368	SCBCX13S9PC007388	SCBBK53S9PC007411
SCBCK13S3PC007319	SCBCJ13S7PC007343	SCBCX13S5PC007369	SCBDG4ZGXPC007389	SCBCK13S4PC007412
SCBCG23S0PC007320	SCBBX53S7PC007344	SCBDX33S1PC007370	SCBBK53S7PC007391	SCBDG4ZG3PC007413
SCBCX13SXP007321	SCBCX13S2PC007345	SCBB15ZG4PC007371	SCBCG2ZGXPC007392	SCBCX13S6PC007414
SCBCK13S5PC007323	SCBCX13S6PC007347	SCBCG2ZG4PC007372	SCBBK53S0PC007393	SCBCX13SXP007416
SCBC11ZGXPC007324	SCBDG4ZG9PC007349	SCBBX53S5PC007374	SCBC11ZG9PC007394	SCBCK13S5PC007418
SCBB15ZG8PC007325	SCBBX53S2PC007350	SCBCK13S2PC007375	SCBBX53S2PC007395	SCBBK53S3PC007419
SCBC11ZG3PC007326	SCBCX13S8PC007351	SCBBB6ZGXPC007376	SCBB15ZG0PC007397	
SCBCK13S2PC007327	SCBCX13S1PC007353	SCBCX13S4PC007377	SCBCX13S1PC007398	
SCBC11ZG9PC007329	SCBBK53S1PC007354	SCBCK13S8PC007378	SCBBG6ZG9PC007399	
SCBCG2ZGXPC007330	SCBBX53S3PC007356	SCBCX13S4PC007380	SCBDG4ZG5PC007400	