

MAS003436 RU 22-07

**RAPID UPDATE**

FROM: Maserati TSO

TO: Maserati Network



**Maserati**

PERSONAL SERVICE LAB

MASTERS OF CARE

TECHNICAL SERVICE OPERATIONS

# Rapid Update 589 MC20 Recirc A and M display icons missing



DATE: February 3 2023

Certain Maserati MC20 (M240) MY21 MY22 listed in MODISCS+ are involved in a Rapid Update to restore the correct functionality of the automatic (A) and or manual mode (M) icons next to recirculation icon via the HVAC display page.

After the latest version update of the radio software the recirculation mode automatic (A) and manual mode (M) icons may have mistakenly disappeared from the screen display. It is therefore necessary to restore the display by writing a new vehicle configuration (Proxi Alignment).

Please note that MC20 cars produced after July 2022 are not included in the list of this campaign and are already equipped with the correct configuration, so this procedure is not needed.

We remind you that all Rapid Updates must be performed at the first entry of the vehicle into the workshop, regardless of the Mandatory setting set in Modis, as required by Maserati policies.


Also, for cars in Stock Dealer / PDI, it is necessary to perform all campaign operations before delivery to the end customer, as prescribed by the White Book and explicitly reported in the Pre-delivery checklist.

Please read and review this bulletin first before starting the procedure.  
Contact your Regional AfterSales Manager (RAM) or the Technical Support Helpdesk if you have any questions. ([Maseratitechsupport@maserati.com](mailto:Maseratitechsupport@maserati.com))

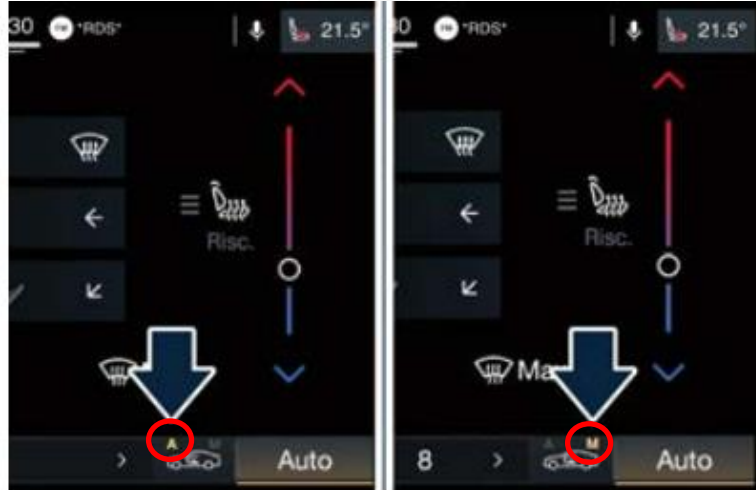
Thank You for your continued support and cooperation.

Maserati Americas  
Aftersales Dept.

# Overview

The recirculation function, which allows you to open/close the air intake of the A/C system by activating the  MIA button, allows you to enable 3 operating modes that can be switched in sequence: "Auto", "Manual" and "External" (Open).

- First pressure - "**Auto**" mode: the A/C system activates the automatic recirculation control. The button with the symbol "A" on the MIA lights up with white light.
- Second press - "**Manual**" mode: the A/C system activates the recirculation, the LED lights up on the button and the respective button with the "M" symbol on the MIA lights up with white light.
- Third pressure - "**Open**" mode: the A/C system returns to outdoor air mode (default operating mode) and all symbols are turned off.



Due to a bug with the latest update of the radio SW these symbols may have been disabled and must be restored, according to the procedure below.

## Operating Procedure

1. Always check ModisCS+ to see if the vehicle is involved in this action and if it has not been previously performed.
2. Write the new "Vehicle Configuration" (Proxi Alignment) via MD-EVO.
3. The procedure is complete.

## Warranty Claim

Complete your warranty claim as follows:

Description	Code
Rapid Update Number	589
Warranty Code	23
Fault Code	063
Component Code	8.61.035
Operation Code	8.61.035.A (0,20 h)