



60 Water sloshing noises in roof area when cornering

60 23 63 2069594/1 March 6, 2023.

Model(s)	Year	VIN Range	Vehicle-Specific Equipment
A6 allroad	2020 – 2023	All	Not Applicable
RS 6 Avant	2021 - 2023		

Condition

Customer states:

- A 'sloshing' sound can be heard in the roof area, particularly when cornering the vehicle.

Workshop findings:

- The symptom can be duplicated after a short test drive. The noise is more pronounced near the front roof area, specifically in the area of the glass trim that is forward of the front sliding glass panel.

Technical Background

Due to an accumulation of fine dirt and debris in the water drain channels, water is not correctly guided away from the panoramic sunroof through the water drain hoses. Instead, it drains out of the sunroof frame under the bonded front trim and down along the outer A-pillar.

Production Solution

The lip seal of the windscreen cover profile will be cut back at the edges to enlarge the passage to the water drain channel allowing a constant flush of fine dirt particles.

Service

Perform the following modification to both the right and left sides of the windshield cover profile lip seal.



1. Figure 1 shows the area of the roof that will be serviced.

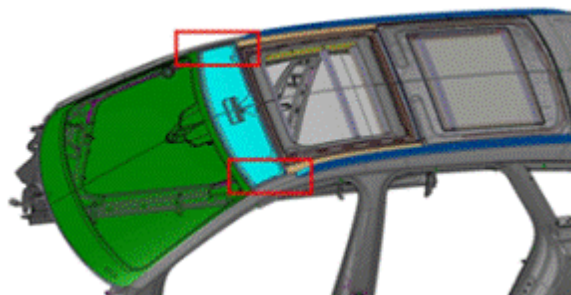


Figure 1. Area of roof to be serviced.

2. With the front glass panel open, Figure 2 shows the dirt that accumulates in the front sunroof frame channel. Carefully remove all of the accumulated dirt and/or debris.



Figure 2. Sunroof frame drainage with the presence of fine dirt and debris.



Note:

The following illustrative examples show the roof area to be serviced with the front glass trim removed. This glass trim **does not** need to be removed to perform the modification.

3. Figures 3 and 4 show the water drainage obstruction that can occur when fine dirt and debris accumulate in this area.



Figure 3. Water passage obstructed preventing drainage.



Figure 4. Drainage path obstructed.

4. This condition can occur on both the right and left drainage channels.
5. Begin the cleaning process by removing the drip rails on both the right and left sides of the windshield (Figure 5).



Figure 5. Drip rails to be removed.



6. Follow the disassembly instructions in ElsaPro Repair manual>>Body>>66 Exterior Equipment>>Moldings, Trims, Extensions and Trim Panels>>Side Sill Trim Panel Decorative Trim, Removing and Installing>>Drip Rail, Removing and Installing (Figure 6).



Figure 6. Drip rail removed.

7. Figure 7 shows the accumulation of dirt and debris under the now removed drip rail trim.



Figure 7. Drip rail trim removed exposing the accumulation of dirt and debris.



8. Using an air gun and compressed air loosen and remove any dirt and debris thoroughly (Figure 8).

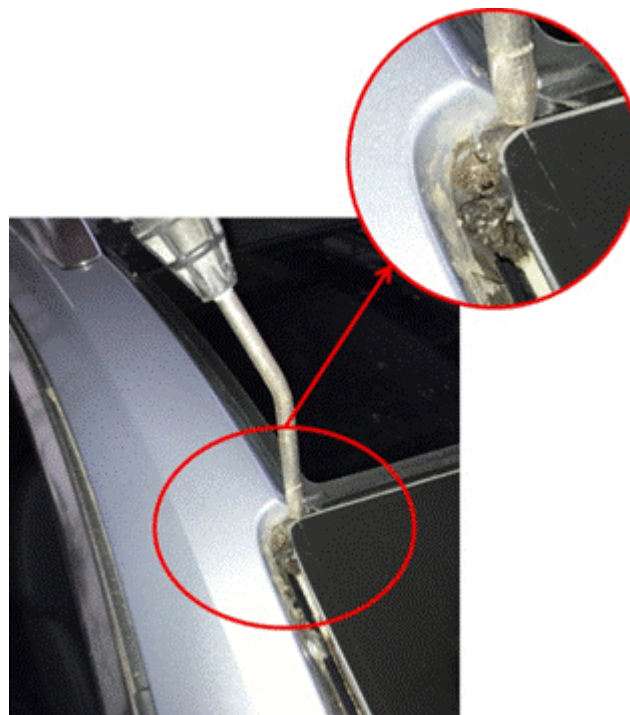


Figure 8. Removal of dirt and debris in the drainage channels using a blow gun with compressed air.



9. Figure 9 shows the drainage channel cleared after application of compressed air and a blow gun.

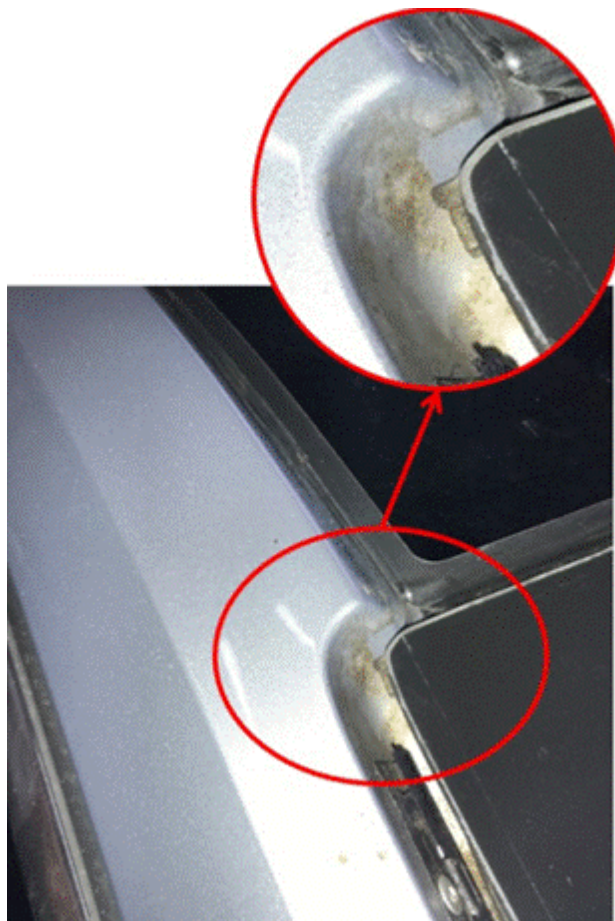


Figure 9. Drainage channel cleared.

- 10 Using a mixture of mild detergent and water rinse the drainage channels clean (Figure 10).



Figure 10. Rinsing the drainage channels.



- 11 Apply the solution at every angle to ensure thorough rinsing of the drainage channels (Figure 11).



Figure 11. Mild detergent and water solution application.

- 12 Figure 12 shows the typical water drainage path that must be clear for correct operation. If necessary, repeat the cleaning procedure multiple times until no more dirt particles are visible.

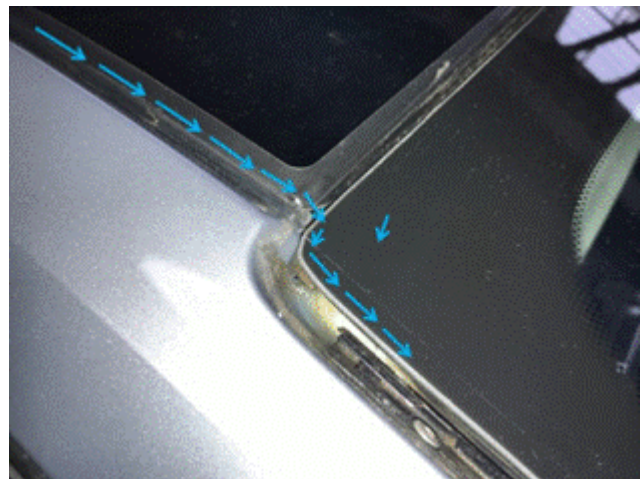


Figure 12. Correct water drainage path.



- 13 Now, modify the lip seal of the windshield cover profile. The sealing lip must be cut back as far as possible from the red line to the right yellow arrow. The cut away piece of the lip seal must be removed (Figure 13).



Figure 13. Section of windshield profile lip seal section to be cut away and removed.



- 14 Using an X-Acto ® or equivalent precision cutting instrument cut the lip seal away. A precision cutting instrument is crucial as a wide utility type cutter is too wide to gain access to the precise cuts required. Exercise extreme caution so as not to damage the painted surfaces or the windshield glass. Mask off the cutting area with masking tape if necessary (Figure 14).

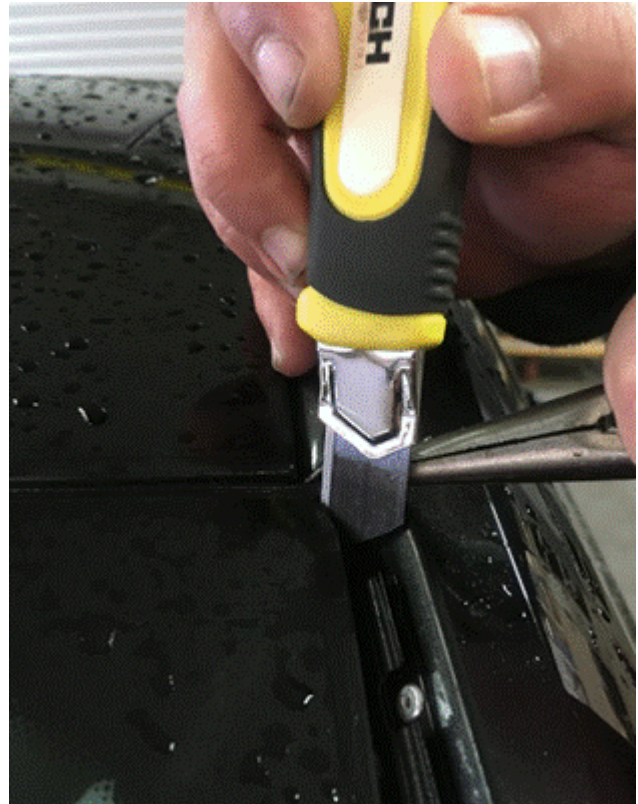


Figure 14. Use of a wide utility type knife will not allow the correct cuts due to the limited space.



15 Reinstall the drip rail trim (Figure 15).



Figure 15. Drip rail trim reinstalled showing the desired opening for proper water drainage.

Warranty

Claim Type:	<ul style="list-style-type: none"> • 110 up to 48 Months/50,000 Miles. • G10 for CPO Vehicles – Verify Owner. • If the vehicle is outside of any warranty, this Technical Service Bulletin is informational only. 		
Service Number:	6048		
Damage Code:	0016		
Labor Operations:	Windshield trim (both sides) remove and reinstall.	6661 2099	20 TU
	Flush A-pillar drainage.	5106 2999	10 TU
	Flush sunroof frame drainage	6028 2999	10 TU



	Modify the lip seal of the windscreen cover profile.	6410 4999	10 TU
Diagnostic Time:	GFF	No allowance	0 TU
	Road test prior to the service procedure	0121 0002	10 TU
	Road test after the service procedure	No allowance	0 TU
Claim Comment:	As per TSB 2069594/1		

All warranty claims submitted for payment must be in accordance with the *Audi Warranty Policies and Procedures Manual*. Claims are subject to review or audit by Audi Warranty.

Additional Information

All part and service references provided in this TSB (**2069594**) are subject to change and/or removal. Always check with your Parts Department and/or ETKA for the latest information and parts bulletins. Please check the Repair Manual for fasteners, bolts, nuts, and screws that require replacement during the repair.

©2023 Audi of America, Inc. All rights reserved. The information contained in this document is based on the latest information available at the time of printing and is subject to the copyright and other intellectual property rights of Audi of America, Inc., its affiliated companies, and its licensors. All rights are reserved to make changes at any time without notice. No part of this document may be reproduced, stored in a retrieval system, or transmitted in any form or by any means, electronic, mechanical, photocopying, recording, or otherwise, nor may these materials be modified or reposted to other sites, without the prior expressed written permission of the publisher.