



## Low Point Drain Assembly and Repair

<b>Bulletin Type:</b>	TSB	<b>Publication Date:</b>	March 2023
<b>Bulletin #(s):</b>	23-089	<b>Make(s):</b>	Jayco, Entegra Coach
<b>Job Code(s):</b>	9803582	<b>Model(s):</b>	Accolade XT (35L, 32U), Seneca XT (35L, 32U)
<b>Flat Rate(s):</b>	2.0 hr. labor - Drain Line Assembly & Repair	<b>Model Year(s):</b>	2023

<b>Incident:</b>	Fresh Tank 2, located in between the rear tires, has reverse slope at the water line hook up at the tank to the low point drain located in the wet bay compartment box. This is not allowing the fresh tank to be completely emptied from the low point drain.
<b>Affected Units:</b>	2023 Entegra Coach Accolade XT and 2023 Jayco Seneca XT
<b>Parts Kit Details:</b>	Parts Kit : 23-089JM 1 - CONNECTOR,SWVL .50FPT *AC PLSTC W/WG 4 - ELBOW,.50BARBX.50BARB PLSTC*G 70 inches - TUBE,PEX .50X20' BLUE #50RF3BX20 42 inches - INSULATION,FOAM 6' .50 PIPE 1 - ELBOW,.50BARBX.50BARB PLSTC*G 2 - RING,CRIMP .50 UPONOR *CG 6 inches - INSULATION,FOAM 6' .50 PIPE
<b>Misc. Tools &amp; Supplies:</b>	Jack Stand Spray foam insulation Screw Gun with Square Bit Pex Crimping Tool Metal Cutting Tool
<b>Parts Return Information:</b>	N/A

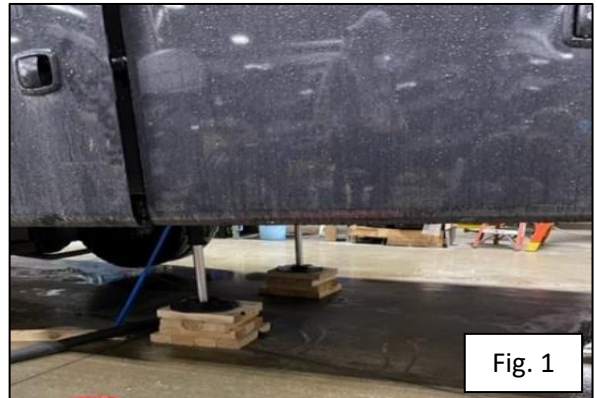
## DRAIN LINE ASSEMBLY PREP

1. Cut and assemble parts as shown in figure 1.
  - a. Note: The 32U and 35L have different length of pipe.



## LOW POINT DRAIN REPAIR INSTRUCTIONS

1. Lower both rear jacks of the unit to raise the back tires just barely off the ground. You may need wood riser blocks to lift unit up. (Figure 1)

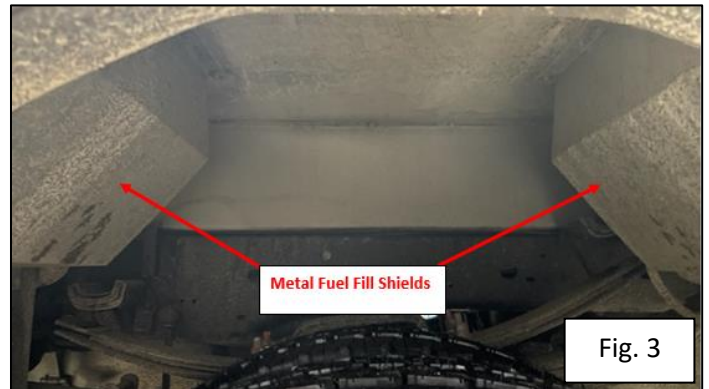


2. Insert jack stand underneath frame rail.

- Using a 21mm socket remove the outside tire from rear driver side. (Figure 2)



- Remove both metal fuel fill shields located inside the wheel well and save the fasteners for re-installation. (Figure 3)



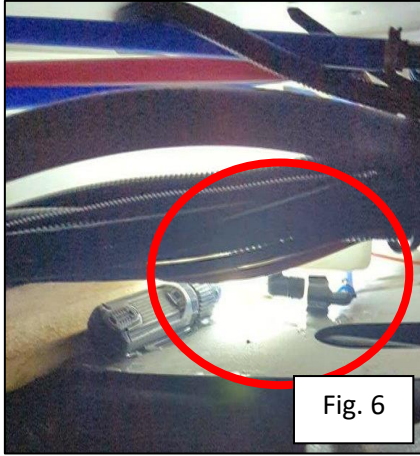
- Remove fresh tank shield located inside the wheel well. (Figure 4)



- Insert a 2X4 wedge underneath the fresh tank in order to raise the tank up. (Figure 5)

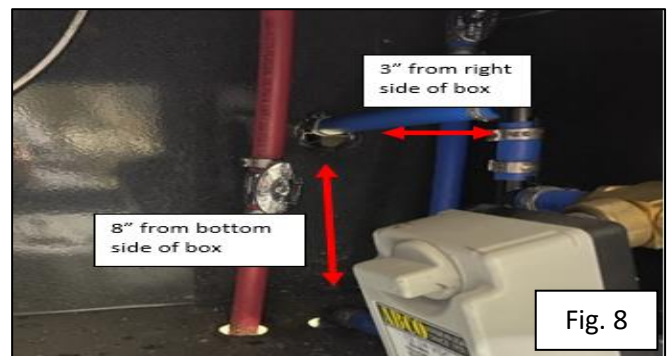


7. Unthread blue water line from the bottom side of the fresh tank. (Figure 6)

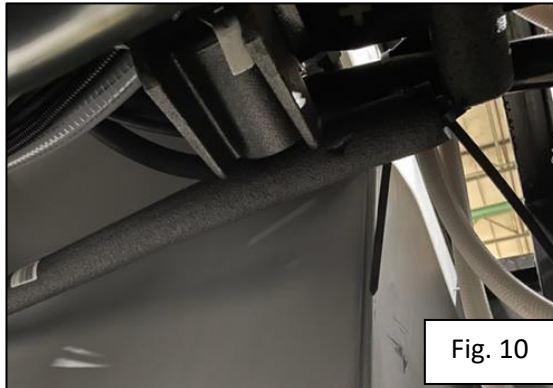


8. Thread the new water line assembly to the fresh water tank. (Figure 7)

- a. Drill a 7/8" hole in wet bay trunk box. When looking inside the box the hole should be 3" from the right side of the box and 8" up from the bottom side. (Figure 8)

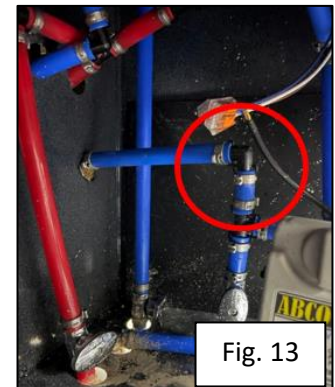


9. Rotate drain line behind the wet bay trunk box (Figure 9 and 10) and insert into the 7/8" hole. (Figure 11)



10. Locate the current low point drain on the unit, which is located just left of the tank selector box. Cut the water line 1 1/2" above the "T" fitting. (Figure 12)

11. Insert elbow into water line assembly and connect to cut water line above the "T" fitting and crimp. (Figure 13)



12. Cut a notch in the bottom right corner of the fresh tank shield. Notch should be 2" up and 2 ½" to the left. (Figure 14)



13. Add 6 inch piece of insulation to the water line section connected to the water tank.
14. Install fresh tank shield in wheel well area and foam notch by water line. (Figure 15)
15. Install both Fuel Fill cover shields.
16. Install outside rear driver side tire and torque lug nuts to 150 LBF-FT.



17. Remove Jack stands and raise rear jacks back up to lower the unit back down.

*Jayco's sole obligation under our limited warranty is to repair or replace defective materials and/or workmanship deemed our responsibility as determined by Jayco in our sole discretion. Jayco reserves the right to use new and/or remanufactured parts or materials of similar quality to complete any work, and to make parts and/or design changes as appropriate without notice to anyone. Jayco designs and/or materials changes are done without obligation to incorporate such changes in previously manufactured product. Jayco makes every reasonable effort to ensure field remedies will not adversely affect performance and/or safety of the unit. This field remedy is not intended to extend to future performance of this RV, or any of its materials, components or parts beyond the standard warranty period. The RV owner's obligation to notify Jayco, or one of its independent, authorized dealers, of a claimed defect does not modify any obligation placed on the RV owner to contact Jayco directly when attempting to pursue remedies under state or federal law.*

903 South Main Street • P.O. Box 460 • Middlebury, IN 46540