



TECH TIP

**S-SERIES ABS LIGHT ON C2200 (49)
DTC**

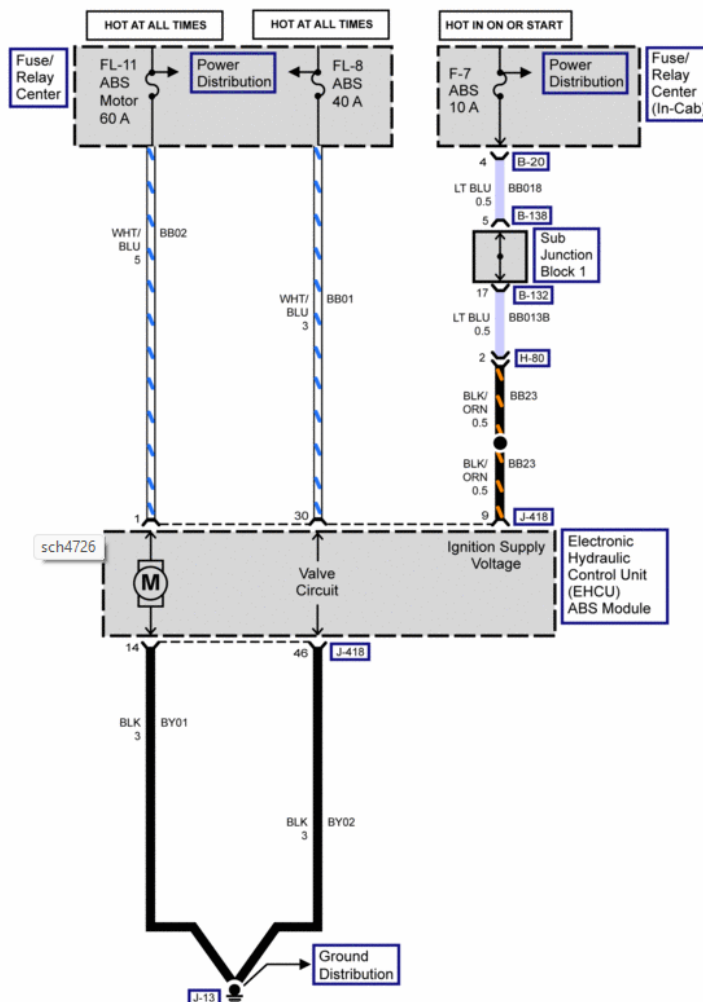
**GROUP: 0-GENERAL
TECH TIP NO: TT-23-014
DATE: 2-14-23**

Subject Vehicles: 2022 Model Year through Current S-Series trucks.

Note: This Technical Tip is provided as technical information and is not authorization for a warrantable repair.

OVERVIEW:

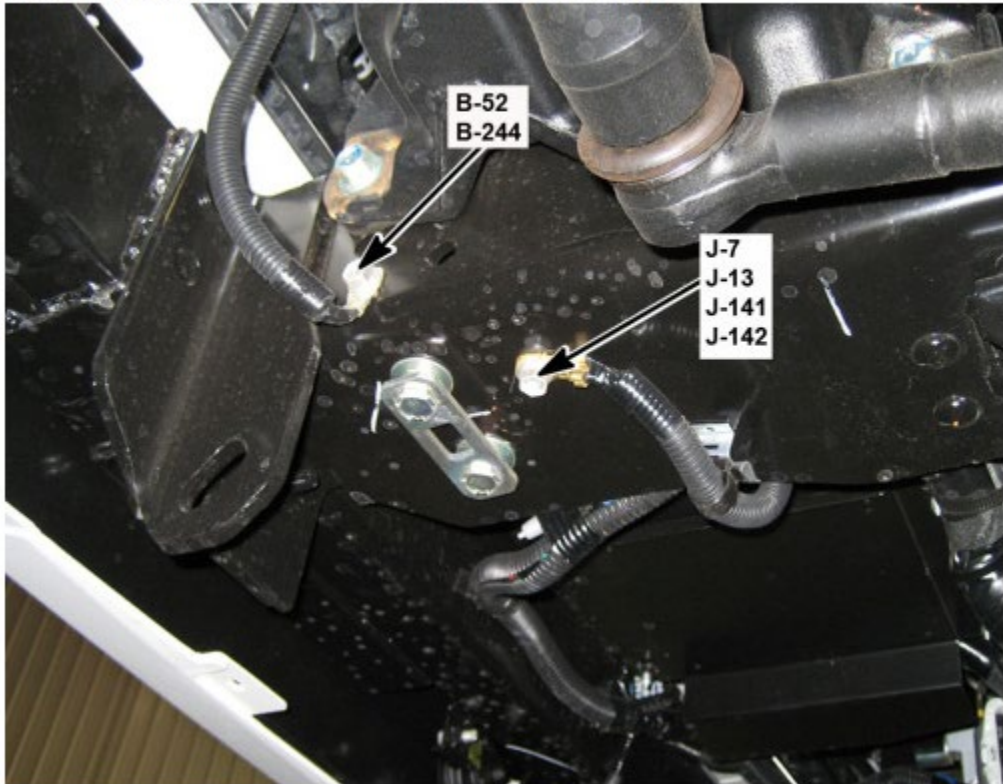
Some 22MY-Current S-Series Trucks may experience an ABS light with DTC C2200 (49) set. When following published diagnosis for this DTC, it may lead to unnecessary replacement of the EHCU (Electronic Hydraulic Control Unit). We have found that addressing a poor ground connection for the EHCU has corrected this DTC. Follow the service procedure prior to replacing any parts.



PROCEDURE:

1. Locate ground J-13 for the EHCU (Electronic Hydraulic Control Unit).

On the Front Left Frame Rail, Behind the Front Bumper



2. Remove the fastener securing the ground eyelet, clean the ground eyelet itself and remove paint from the frame around this connection.
3. Secure the eyelet back on to the frame, securing the fastener, ensuring a good and tight connection.
4. If the issue persists after cleaning this ground, follow published diagnosis.