



Countries: CANADA, UNITED STATES Document ID: IK1201473
 Availability: ISIS, FleetSIS, IsSIR Revision: 2
 Major System: ENGINES Created: 10/28/2022
 Current Language: English Last Modified: 2/13/2023
 Other Languages: NONE Author: Jeff Polich
 Viewed: 2718

[Less Info](#)

Hide Details

Coding Information

Copy Link 	Copy Relative Link 	Bookmark View My Bookmarks	Add to Favorites 	Print 	Provide Feedback 	Helpful 5	Not Helpful 3
---------------	------------------------	---	----------------------	-----------	----------------------	------------------	----------------------

Title: Recall 22518 SDS Template to Enable Con-Rod

Applies To: A26A Engine

CHANGE LOG

Please refer to the change log text box below for recent changes to this article:

02/08/2023 - Updated SDS Template with 108 more VINS supplied by compliance
 11/14/2022 - Initial Release
 11/11/2022 - Created Article

DESCRIPTION

This service procedure will guide the technician in applying a template using Service Diagnostic Solutions (SDS) for VIN in Recall 22518.

SYMPTOM(s)

N/A

SPECIAL TOOL(s) / SOFTWARE

Tool Description	Tool Number	Comments	Instructions
Nexiq USB Link 2	NQ124032	N/A	N/A
EZ-Tech® or EST with Service Diagnostics	N/A	N/A	N/A
Battery Charger 55 Amp	PSC550CC	N/A	N/A

SERVICE PARTS INFORMATION

N/A

DIAGNOSTIC STEP(s)

N/A

REPAIR STEP(s)

WARNING! To prevent property damage, personal injury, and / or death, park vehicle on a hard, flat surface, turn the engine off, set the parking brake, and install wheel chocks to prevent the vehicle from moving in either direction.

WARNING! To prevent property damage, personal injury, and / or death, if the vehicle must be raised, do not work under the vehicle supported only by jacks. Jacks can slip or fall over.

WARNING! To prevent personal injury and / or death, always wear safe eye protection when performing vehicle maintenance.

WARNING! To prevent property damage, personal injury, and / or death, keep flames or sparks away from vehicle and do not smoke while servicing the vehicle's batteries. Batteries expel explosive gases.

WARNING! To prevent property damage, personal injury, and / or death, remove the ground cable from the negative terminal of the battery box before disconnecting any electrical components. Always connect the ground cable last.

Prerequisites / Requirements

1. Strong internet connection is needed when connecting Electronic Service Tools.
2. If working at customer's location without or limited internet, download template and save to your desktop prior to going to field.

Procedure

1. Park the vehicle on a level surface.
2. Shift the transmission into Park or Neutral and set the parking brake.
3. Turn ignition to Key OFF position.
4. Install wheel chocks.
5. Connect battery charger/maintainer/jumper to the vehicle battery.
6. Download and save the following Recall 22518 SDS Template.

Recall 22518 SDS Template

7. Unzip file save to desktop.
8. Using only compatible interface cables, connect EZ-Tech or EST to the vehicle.

9. Turn ignition to Key ON, Engine OFF and launch SDS.

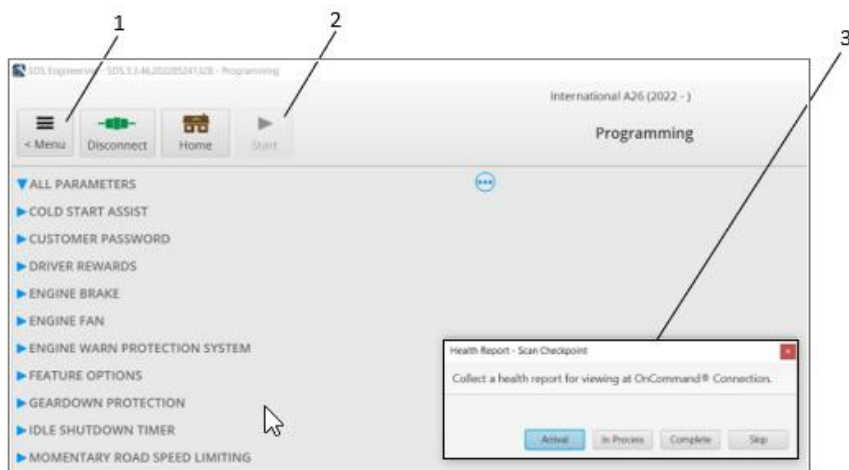


Figure 1. SDS Pro Screen

1. Menu tab
2. Health Report - Scan Checkpoint
3. Start Tab

10. Complete the health Report - scan checkpoint (figure 1, then item 3).

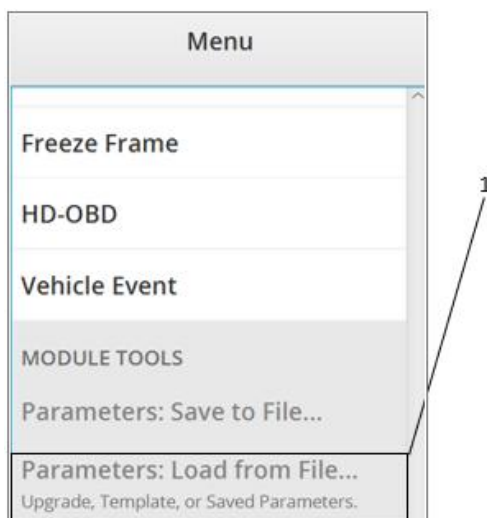


Figure 2. SDS Menu Tab

1. Parameters/Load from File

11. Click **Menu** select Parameters/Load from File (figure 2, Item 1)

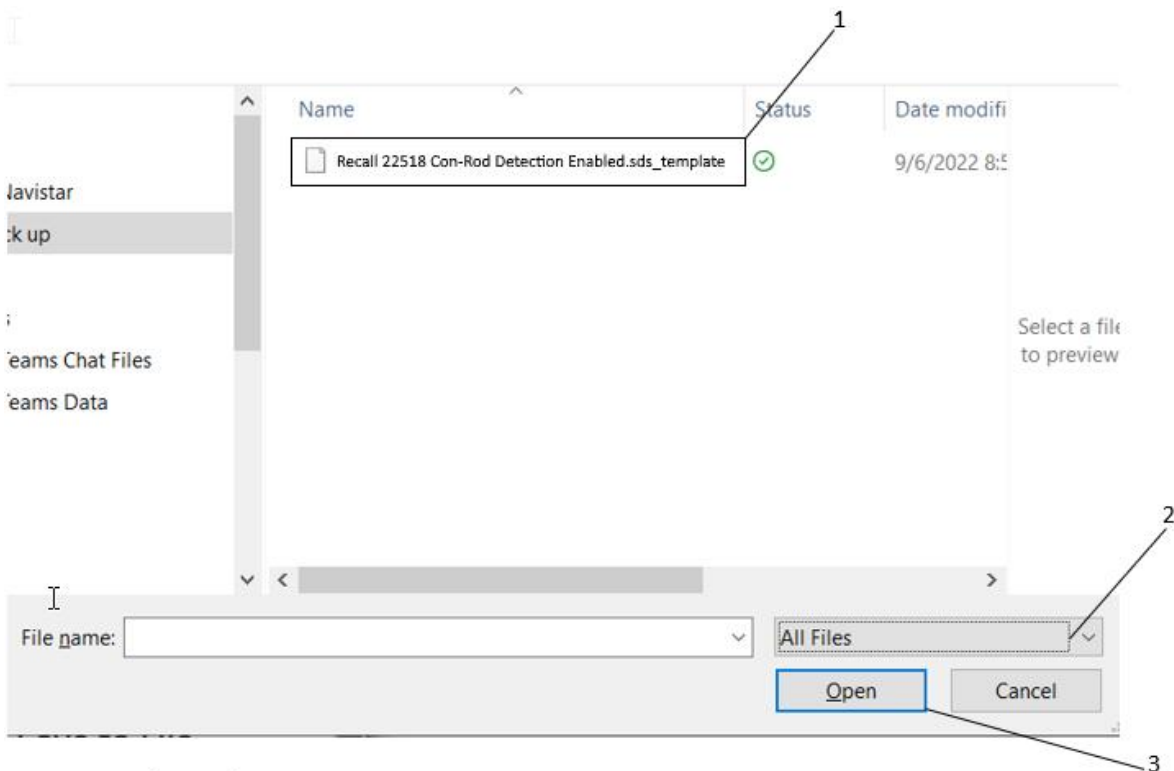


Figure 3. Load Template Screen

1. Recall 22518 Con-Rod Detection Enabled.sds.template
2. All Files
3. Open

12. Ensure ALL files is selected (Figure 3, Item 2).

13. Select Recall 22518 Con-Rod Detection Enabled.sds.template (Figure 3, Item 1).

14. Click Open (Figure 3, item 3).

15. Click Start tab (figure 1, item 3).

16. Follow on-screen instructions.

17. Turn ignition to OFF position.

18. Determine the level access of the SDS software.

- a. If user has deleaer level access go to Step 19.
- b. if user has customer / fleet access go to Step 22.

19. Turn ignition Key to ON, engine OFF.

20. Under Menu tab (figure 1, Item 1) Click **"ALL Parameters"** tab, type in the **Search/Filter box "3900"** to confirm parameter change has been successfully updated.

21. Go to Step 8 in Recall 22518 instructions.

22. Launch SDS and Create a Health Report (refer to Step 9).

23. Open **Service Portal** Click on **Health Report** or **Connection tab**.

24. Open current **Health Report**.

Vehicle Details	
Item	Value
Basic Info:	(Truck) (Truck Tractor) (Class 7: 26,001-33,000 lb) Cab Type: Conventional Cab, SBA: set-back-axle, Fuel Type: Diesel, Drive Line Type: 4x2, Brake System: Air, Country: MEXICO,
Engine #1 (Source: 0) Data	
Connecting Rod Strategy Enable:	EBP knock detection enabled
Operator - Ignition Cycle Counter:	1,169
Engine Intake Air - Temperature:	95
MAF Configuration:	Configuration 0
Make:	INT
Model:	7571061717

Figure 4. Health Report Vehicle Information

1. Connecting Rod Strategy Enable
2. Vehicle Details
3. EBP knock detection enabled

25. Under vehicle details (Figure 4, Item 2) search for Connecting Rod Strategy Enable (Figure 4, Item 1) and confirm value is set to EBP knock detection enabled (Figure 4, Item 3).

26: Go to Step 8 in Recall 22518 instructions

WARRANTY INFORMATION

Refer to the recall 22518 for warranty instructions.

 Hide Details

Feedback Information

Viewed: 2717

Helpful: 5

Not Helpful: 3

No Feedback Found