

February 23, 2023

Version 1

CMBS Warning Light is ON, DTC B2A60-99

AFFECTED VEHICLES

| Year | Model | Trim | Affected VIN Range |
|------|-------|------|--|
| 2023 | CR-V | ALL | 2HKRS3...000001 thru 2HKRS3...000754 2HKRS3...300001 thru 2HKRS3...300942 2HKRS4...100001 thru 2HKRS4...104710 2HKRS4...400002 thru 2HKRS4...404073 5J6RS3...000008 thru 5J6RS3...000247 5J6RS4...000001 thru 5J6RS4...000747 7FARS3...000001 thru 7FARS3...000972 7FARS4...000002 thru 7FARS4...001932 7FARW2...400001 thru 7FARW2...400005 |

SYMPTOM

The Adaptive Cruise Control stops working or cancels while driving, and the “Collision Mitigation Braking System problem. See your dealer” message appears on the MID. Driver Support System has DTC B2A60-99.

POSSIBLE CAUSE

Calibration process failure occurred in the multipurpose camera software.

CORRECTIVE ACTION

Update the multipurpose camera software to the most current software version.

WARRANTY CLAIM INFORMATION

The normal warranty applies.

| Operation Number | Description | Flat Rate Time | Defect Code | Symptom Code | Template ID | Failed Part Number |
|------------------|----------------------------------|----------------|-------------|--------------|-------------|--------------------|
| 7385A5 | Update the front camera software | 0.2 hr | 03214 | 03217 | A23022A | 8S102-3A0-A06 |
| 7385A5A | Do an all DTC check and clear | 0.1 hr | 03214 | 03217 | A23022B | 8S102-3A0-A06 |

CUSTOMER INFORMATION: The information in this bulletin is intended for use only by skilled technicians who have the proper tools, equipment, and training to correctly and safely maintain your vehicle. These procedures should not be attempted by “do-it-yourselfers,” and you should not assume this bulletin applies to your vehicle, or that your vehicle has the condition described. To determine whether this information applies, contact an authorized Honda automobile dealer.

SOFTWARE INFORMATION

NOTE: Unnecessary or incorrect repairs resulting from a failure to update the diagnostic and reprogramming software are not covered under warranty.

| | |
|--------------------------------|--------------------|
| i-HDS Software Version | 1.008.008 or later |
| Honda ECU Reprogramming | 3.0.6.0 or later |

Update only the systems and software listed in this service bulletin.

Do not use the MongoosePRO VCI for this service bulletin as it is not an American Honda-approved device.

For more information about updating vehicle systems, refer to service bulletin 01-026, *Updating Control Units/Modules*.

| Year/Model | Current Program ID | New Program ID |
|-------------------|----------------------------------|-----------------------|
| 2023 CR-V | 8S102-3A0-A060 8S102-3A0-A070 | 8S102-3A0-A08 |

INSPECTION PROCEDURE

Connect the i-HDS and check for DTC's.

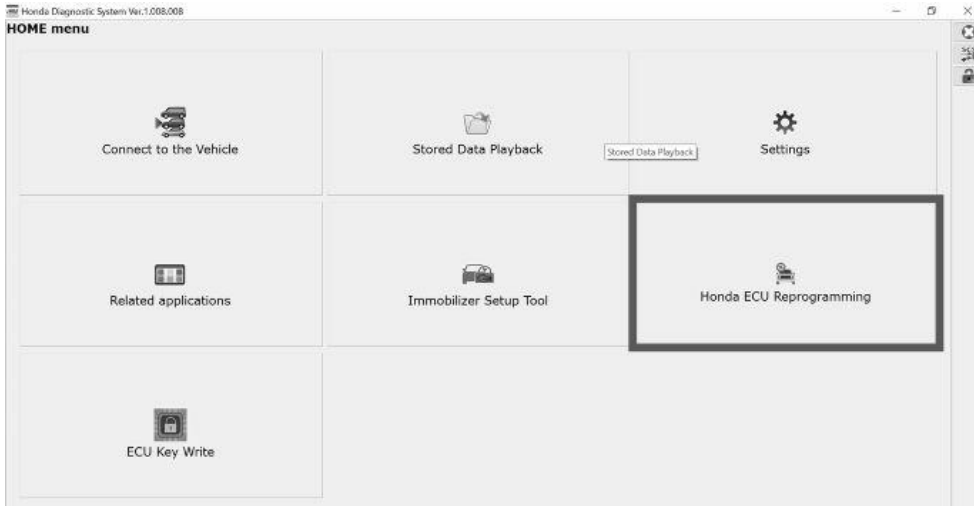
- If the DTC B2A60-99, *Out of Automatic Correction Range for Misalignment of Multipurpose Camera Unit Image*, is visible then clear the DTC and proceed to the Repair Procedure to update the ACC/CMBS software.
- If the DTC does not clear, continue with normal troubleshooting.

REPAIR PROCEDURE

- Make sure the 12-volt battery is fully charged before starting an update.
 - Connect a fully charged jumper battery to the vehicle, and leave it connected during the entire procedure to maintain steady voltage.
 - Do not use the GR8 because the vehicle requires a steady electrical current
 - Control module failure caused by the improper completion of a software update (early key cycle, low battery voltage, disconnected DLC cable, etc.) is not covered by warranty.
 - If an error occurs during the update or the i-HDS freezes, **do not disconnect the battery or turn the ignition to OFF**. Reboot the i-HDS, and start over.
 - To prevent control unit damage, do not operate anything electrical (headlights, audio system, brakes, A/C, power windows, door locks, etc.) during the update.
 - Warranty reimbursement for technician labor is not allowed for routine checking/installation of any available software update.
1. From the desktop, select **i-HDS**.

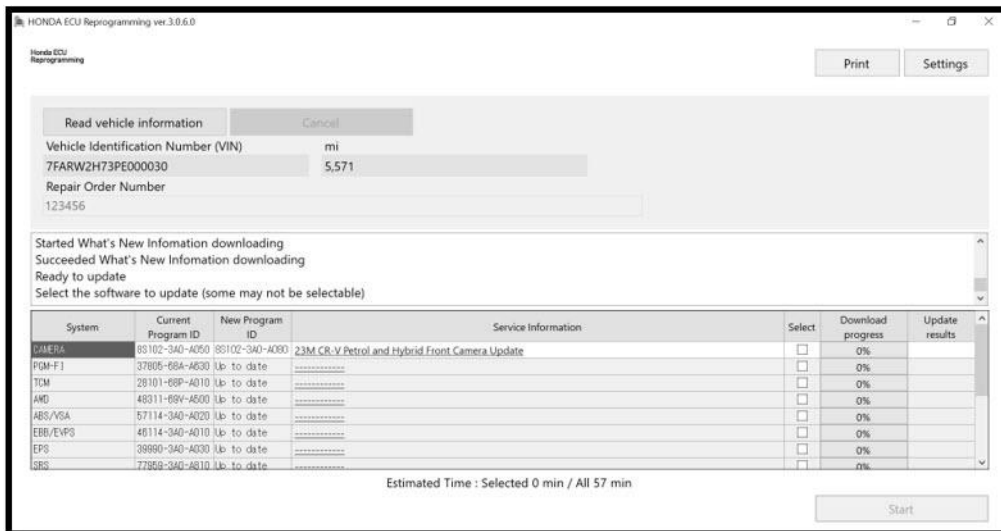
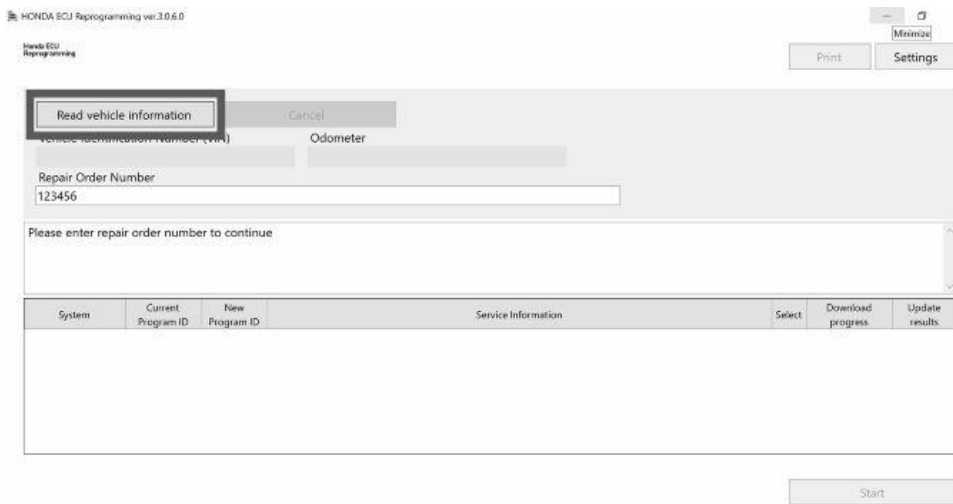


2. From the **HOME** menu, select the **Honda ECU Reprogramming**.

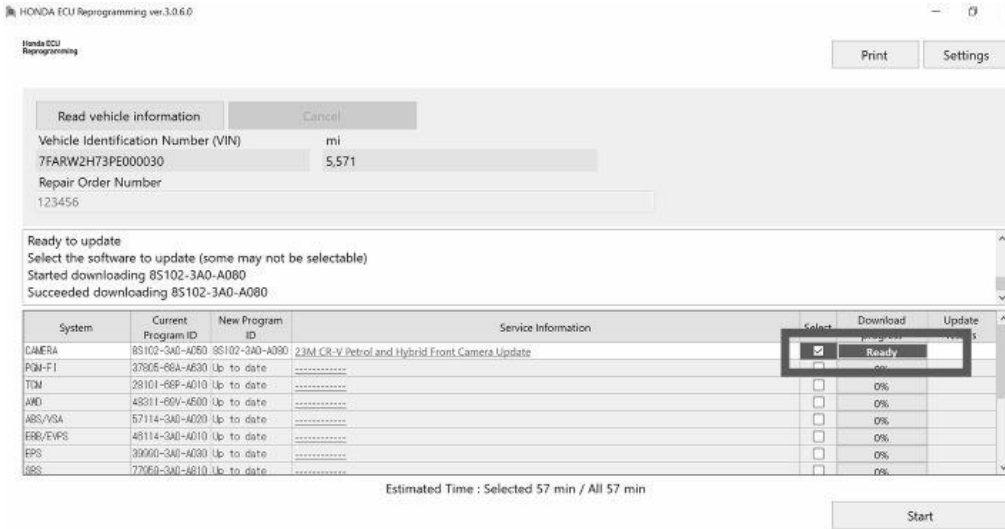


3. Enter the repair order number and press **Read vehicle information**.

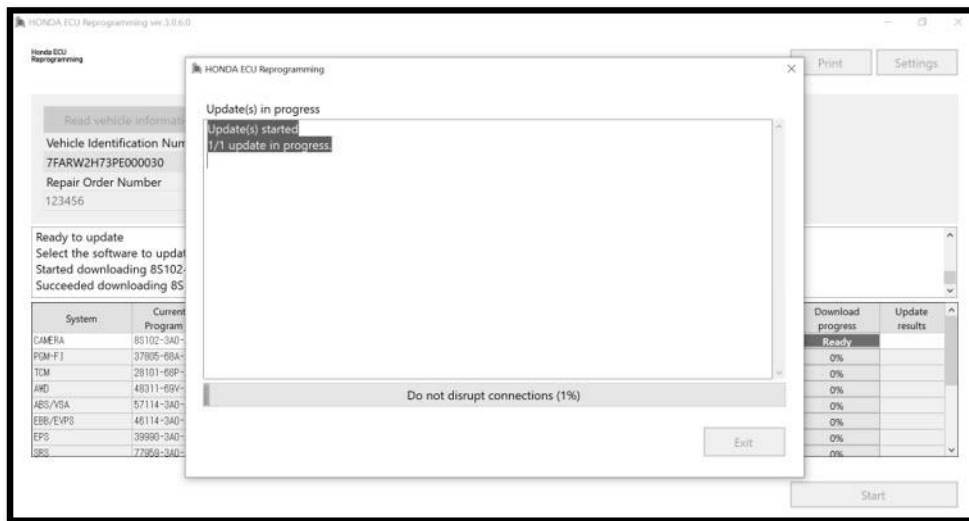
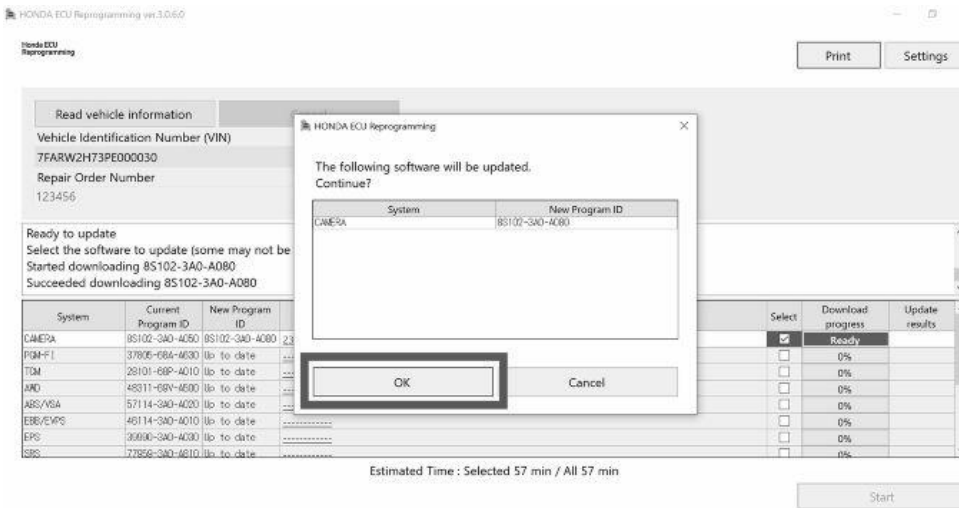
NOTE: Wait until vehicle communication has completed.



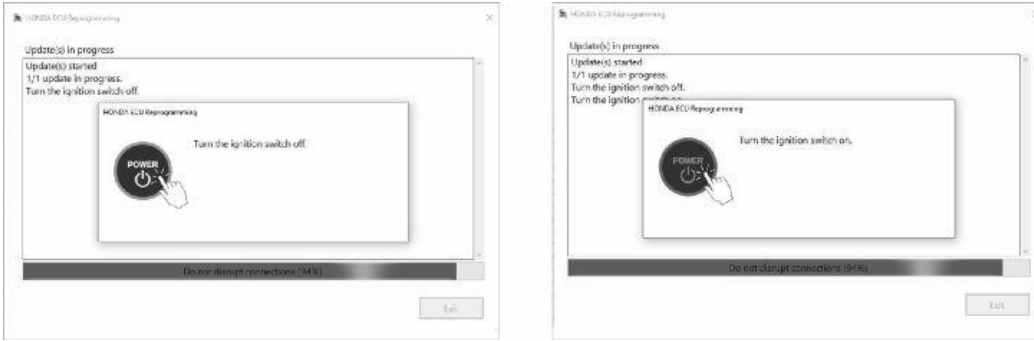
4. Check the box to select the option for the camera update.



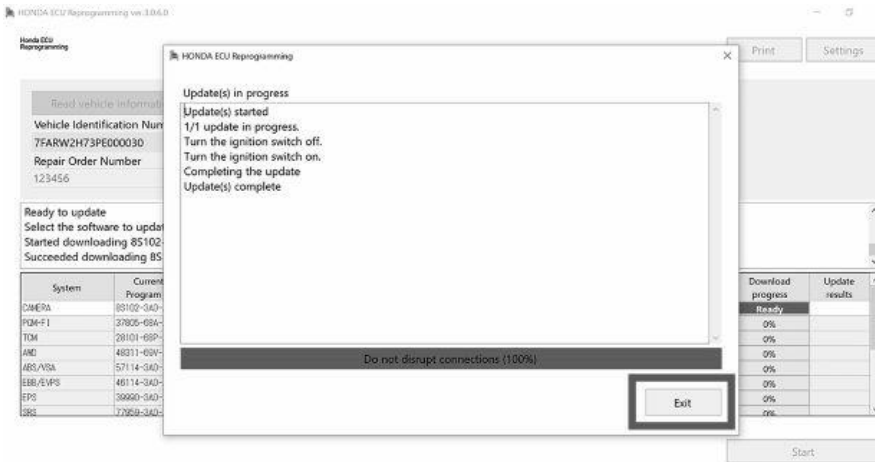
5. Press OK to begin updating.



6. When prompted, turn the ignition switch **OFF**, then turn the ignition switch **ON**.



7. Once the camera is updated, the following screen appears, then select **EXIT** and close the ECU Reprogramming.



8. Do an **ALL DTC** check in i-HDS, and then clear any codes set during the update.

END