

**February 23, 2023**

Version 1

## LKAS Warning Light is On When Driving in Reverse

### AFFECTED VEHICLES

Year	Model	Trim
2023	CR-V	ALL
2023	CR-V Hybrid	ALL

### SYMPTOM

The LKAS warning light comes on when driving in reverse.

### POSSIBLE CAUSE

False detection logic occurred in the multipurpose camera software.

### CORRECTIVE ACTION

Update the multipurpose camera software to the most current software version.

### WARRANTY CLAIM INFORMATION

The normal warranty applies.

Operation Number	Description	Flat Rate Time	Defect Code	Symptom Code	Template ID	Failed Part Number
7385A5	CR-V: Update the front camera software	0.2 hr	03214	03217	A23021A	8S102-3A0-A06
7385A5A	Do an all DTC check and clear	0.1 hr	03214	03217	A23021B	8S102-3A0-A06

Operation Number	Description	Flat Rate Time	Defect Code	Symptom Code	Template ID	Failed Part Number
7385A5	CR-V FHEV: Update the front camera software	0.2 hr	03214	03217	A23021C	8S102-3D4-A06
7385A5A	Do an all DTC check and clear	0.1 hr	03214	03217	A23021D	8S102-3D4-A06

**CUSTOMER INFORMATION:** The information in this bulletin is intended for use only by skilled technicians who have the proper tools, equipment, and training to correctly and safely maintain your vehicle. These procedures should not be attempted by "do-it-yourselfers," and you should not assume this bulletin applies to your vehicle, or that your vehicle has the condition described. To determine whether this information applies, contact an authorized Honda automobile dealer.

## SOFTWARE INFORMATION

NOTE: Unnecessary or incorrect repairs resulting from a failure to update the diagnostic and reprogramming software are not covered under warranty.

**Before beginning the repair, make sure all diagnostic and reprogramming software are updated as listed.**

<b>i-HDS Software Version</b>	1.008.008 or later
<b>Honda ECU Reprogramming</b>	3.0.6.0 or later

**Update only the systems and software listed in this service bulletin.**

**Do not use the MongoosePRO VCI for this service bulletin as it is not an American Honda-approved device.**

For more information about updating vehicle systems, refer to service bulletin 01-026, *Updating Control Units/Modules*.

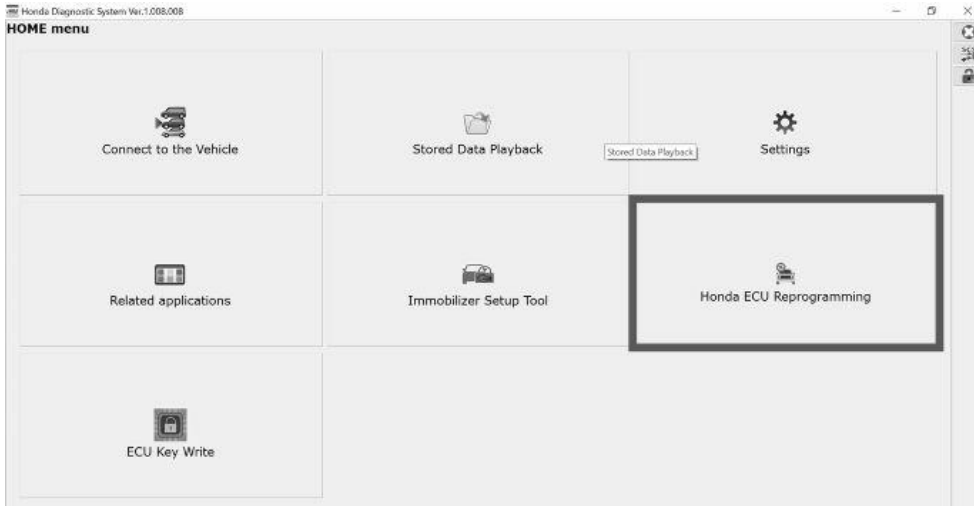
<b>Year/Model</b>	<b>Current Program ID</b>	<b>New Program ID</b>
2023 CR-V	8S102-3A0-A060 8S102-3A0-A070	8S102-3A0-A08
2023 CR-V Hybrid	8S102-3D4-A050 8S102-3D4-A060	8S102-3D4-A07

## REPAIR PROCEDURE

- Make sure the 12-volt battery is fully charged before starting an update.
  - Connect a fully charged jumper battery to the vehicle, and leave it connected during the entire procedure to maintain steady voltage.
  - Do not use the GR8 because the vehicle requires a steady electrical current
  - Control module failure caused by the improper completion of a software update (early key cycle, low battery voltage, disconnected DLC cable, etc.) is not covered by warranty.
  - If an error occurs during the update or the i-HDS freezes, **do not disconnect the battery or turn the ignition to OFF**. Reboot the i-HDS, and start over.
  - To prevent control unit damage, do not operate anything electrical (headlights, audio system, brakes, A/C, power windows, door locks, etc.) during the update.
  - Warranty reimbursement for technician labor is not allowed for routine checking/installation of any available software update.
1. From the desktop, select **i-HDS**.

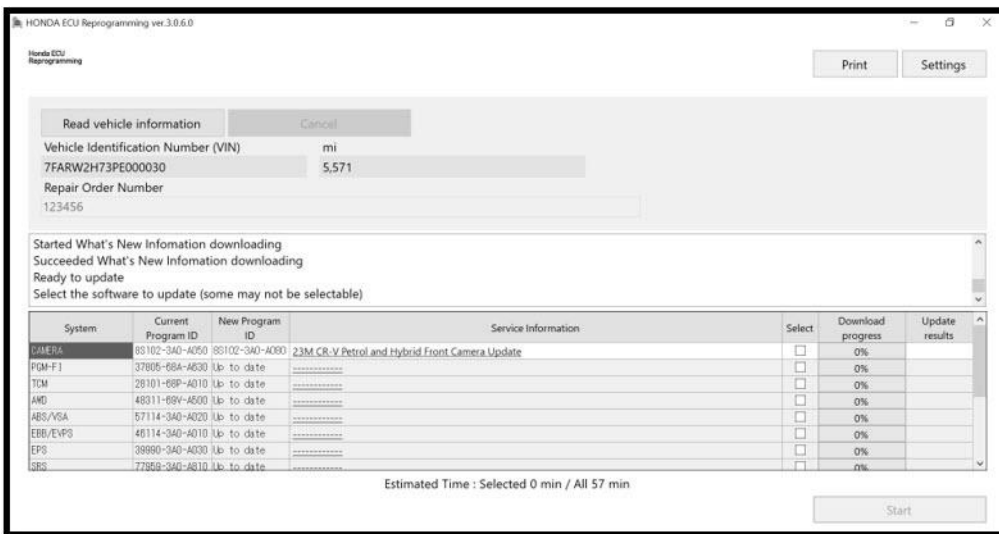
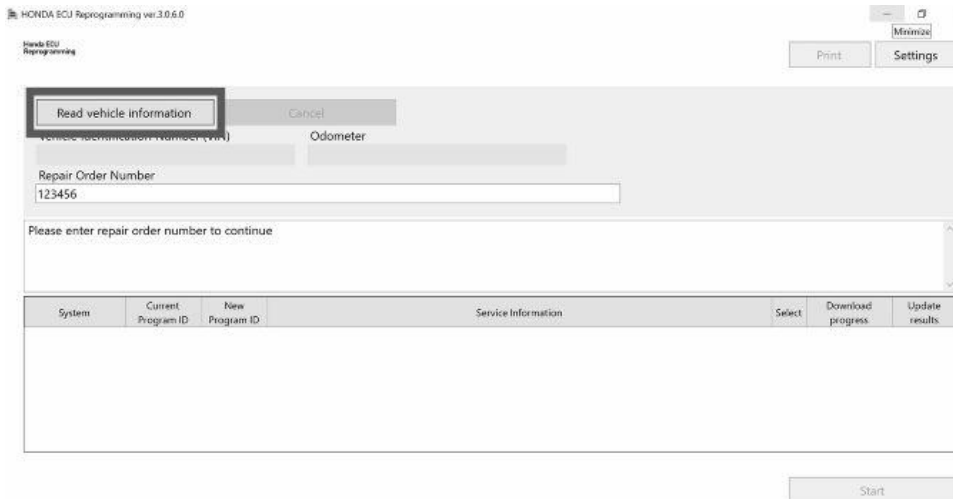


2. From the **HOME** menu, select the **Honda ECU Reprogramming**

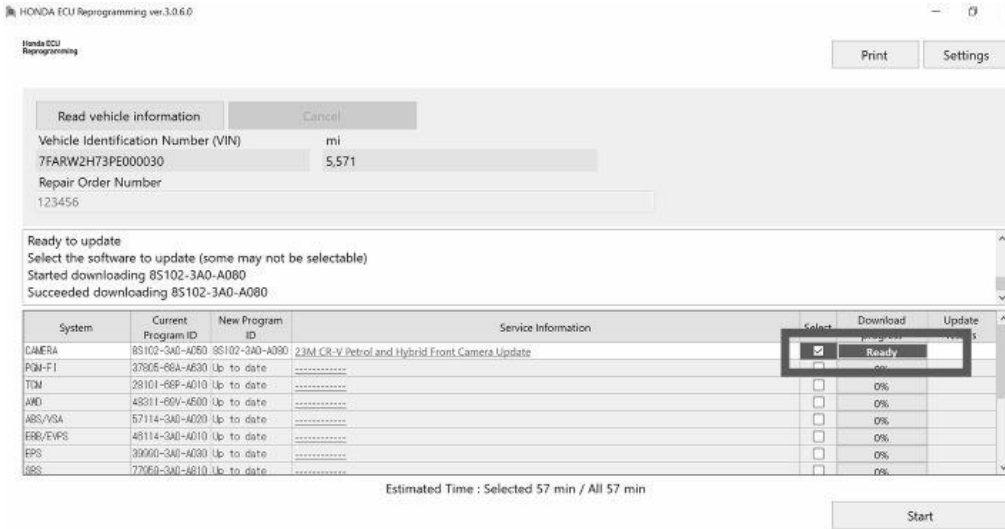


3. Enter the repair order number and press **Read vehicle information**.

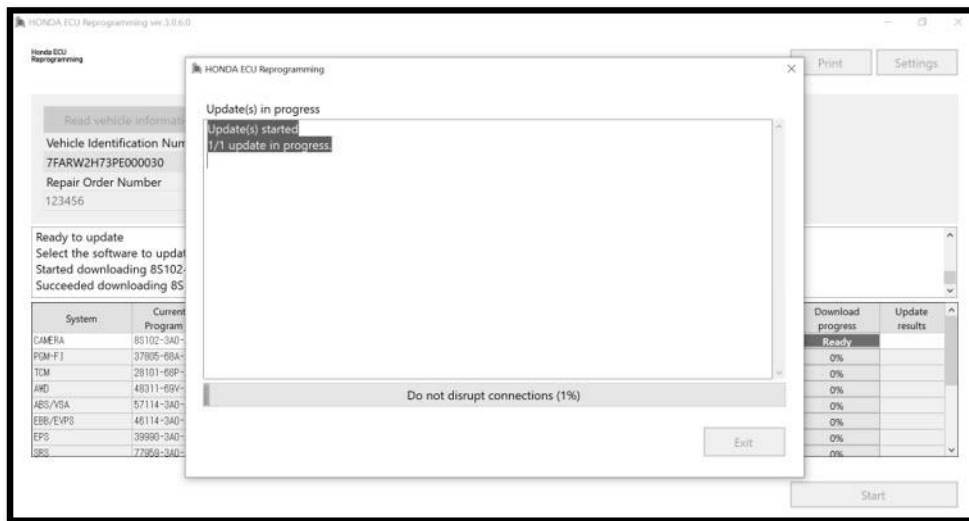
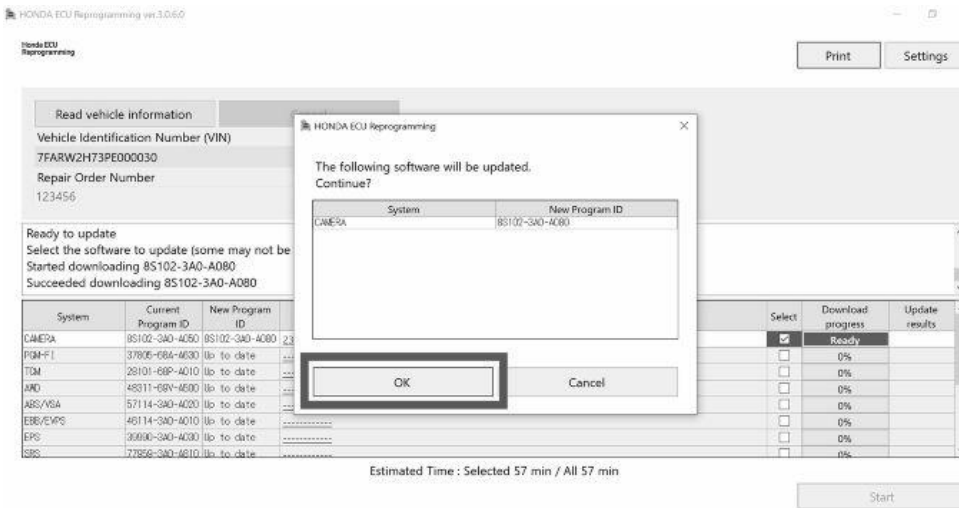
NOTE: Wait until vehicle communication has completed.



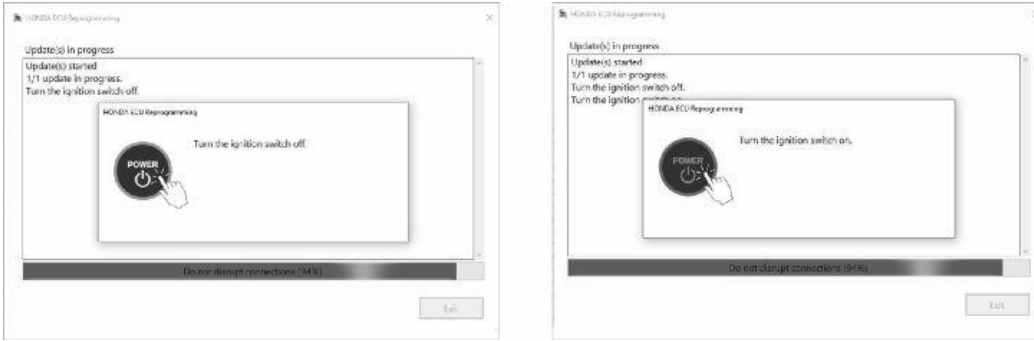
4. Check the box to select the option for the camera update.



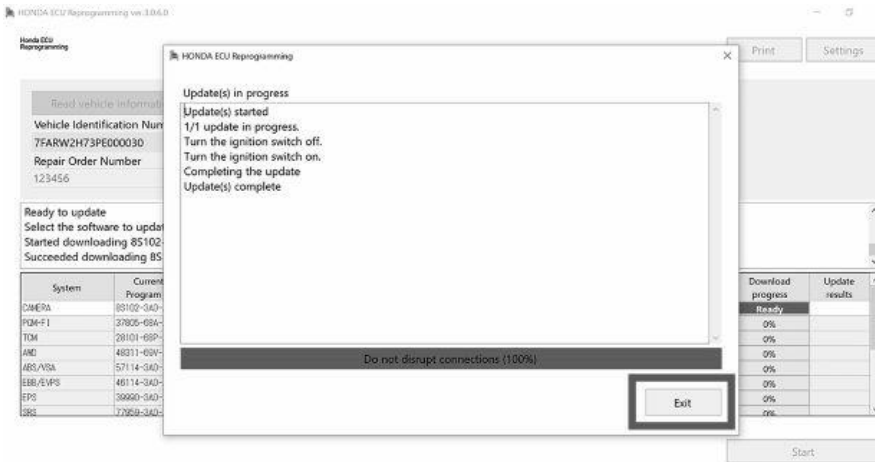
5. Press OK to begin updating.



6. When prompted, turn the ignition switch **OFF**, then turn the ignition switch **ON**.



7. Once the camera is updated, the following screen appears, then select **EXIT** and close the ECU Reprogramming.



8. Do an **ALL DTC** check in i-HDS, and then clear any codes set during the update.

END