

# PREVOST

## Instruction Sheet

## IS-20051

### DRIVER'S BARRIER OPP2

First Release

02-20-2022

#### MATERIAL

Kit #3211738 includes the following main assemblies:

Part No.	Description	Qty
3211739	POST, DOOR LOCK ASSY.	1
3211740	DRIVER PROTECTOR ASS	1
3211741	DRIVER'S BARRIER DOOR ASS	1
406810	PARTITION KIT PASSENGER MODESTY	1
IS-20051	INSTRUCTION SHEET	1

Assembly #3211739 includes the following:

Part No.	Description	Qty
3201674	POST, DOOR LOCK ASSY. SAV	1
3201675	HARDWARE POST, DOOR LOCK ASSY. SAV	1
Hardware kit <b>3201675</b> includes the following parts:		
402227	REINFORCEMENT PLATE	1
406775	SUPPORT	1
500142	WSH FL SS 6.6X22X2 (M6,1/4)	8
5002217	SCR CRG SS 1/4-20X3	3
5002218	SCR CRG SS 1/4-20X2	5
502874	NUT HEX NYRT NX500 1/4-20	8
504637	CABLE TIE, NYLON BLK (STD)	1

Assembly #3211740 includes the following:

Part No.	Description	Qty
3201676	POLE, DRIVER PROTECTOR ASS SAV	1.000
3211547	PROTECTOR, DRIVERS	1.000
3201677	DRIVER PROTECTOR ASS SAV	1.000
Hardware kit <b>3201677</b> includes the following parts:		
3211550	SPECIAL NUT 1/4-20 SS	2.000
402149	BUSHING	2.000
403924	PARTITION BRACKET.	1.000
502634	SCR SET HEXS CUP M6-1.0X6	1.000
5001114	WSH FL NYL .260X.687X.060 (M6,1/4)	2.000
5001182	NUT HEX NYRT SS M6-1	2.000
5001710	SCR CAP HEX SS M6-1 X 55 LG. PT	2.000
5001733	SCR CAP HEX SS 1/4-20X1 3/4"	7.000
500625	SCR TC HEXW Z050 1/4-20X2	7.000
5002196	SCR CAP BUT TO A-THEFT SS 1/4-20 X 1	2.000
5002197	SCR CAP BUT TO A-THEFT SS 1/4-20 X 3/4	2.000
500332	WSH FL N500 .328X.875X.062 (M8,5/16)	2.000
500411	WSH FL SS .260X.697X.05 (M6,1/4)	2.000
500436	SCR TP OV PH Z050 #10X2	5.000
500477	WSH LO SPT S.S. .262X489X062 (M6,1/4)	4.000
500805	WSH FL N500 .218X.875X.062 (M5,#10)	5.000
500855	WSH FL N500 .188X.438X.049 (M4,#10)	5.000
5011313	BRACKET, RECTANGULAR 1 5/16" I.D.	1.000
504399	CAP TRIM WASHER, # 10 SCREW	5.000
504400	CAP TRIM, BLACK 12GA. SCREW	5.000
505539	SPACER 13 X 8 OD X 5.3 ID	5.000
900251	BUSHING, PARTITION MOUNTING	14.000

Assembly #**3211741** includes the following:

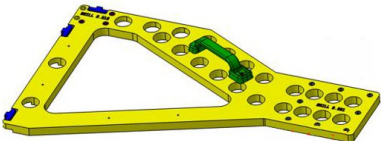
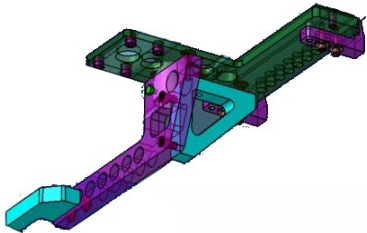
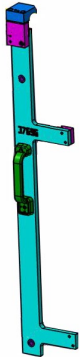
Part No.	Description	Qty
<b>290815</b>	GLASS, PARTITION DOOR OPP2	1.000
<b>3201678</b>	DRIVER'S BARRIER DOOR ASS SAV	1.000
<b>3201679</b>	HARDWARE, DRIVER'S BARRIER DOOR SAV	1.000
Hardware kit <b>3201679</b> includes the following parts:		
402152	BRACKET 1, PARTITION DOOR	3.000
402153	BRACKET 2, PARTITION DOOR	3.000
500142	WSH FL SS 6.6X22X2 (M6,1/4)	7.000
5001443	WSH FL SS 10.3X25.4X3 (M10,3/8)	7.000
5001783	SCR CAP HEXS SS M6-1.0 X 12	4.000
5002197	SCR CAP BUT TO A-THEFT SS 1/4-20 X 3/4	7.000
790392	SPACER AD1 NEO N/A BK 1/8"X5/16"X1"	12.000
900251	BUSHING, PARTITION MOUNTING	8.000

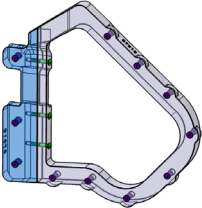
Assembly #**406810** includes the following:

Part No.	Description	Qty
<b>402202</b>	PARTITION, PASSENGERS ASSY	1.000
<b>406848</b>	MODESTY PASS.ASS.BULKHEAD BRACKET SAV	1.000
<b>406852</b>	PARTITION PASSENGERS,MODESTY OPP2 SAV	1.000
Hardware kit <b>406852</b> includes the following parts:		
314945P	PANEL FINISH 132MM, WITH HOLES	1.000
315013	SPACER, PASSENGERS PARTITION	1.000
3211662	COVER	1.000
402196	SUPPORT, TOP (WELDED)	1.000
402203	SUPPORT (WELDED)	1.000
406805	FIXING PLATE	1.000
5000310	SCR CAP HEX SS NSS M6X1 X 40	4.000

500142	WSH FL SS 6.6X22X2 (M6,1/4)	8.000
5001438	RVT DRV TR NYL 1/4" (0.063_0.500)	3.000
5001684	NUT HEX CAP SS NSS M6-1.00	2.000
5001698	SCR CAP HEXS SS XYLAN M6-1.0X60MM LG	1.000
5001833	WSH BEL SPR SS 301 6.65X17.4X1.27(M6,1/4	4.000
5002196	SCR CAP BUT TO A-THEFT SS 1/4-20 X 1	4.000
500477	WSH LO SPT S.S. .262X489X062 (M6,1/4)	6.000
502582	WSH LO SERR Z050 6.1X16.2X.9 (M6, 1/4)	4.000
502874	NUT HEX NYRT NX500 1/4-20	4.000
504498	RBP PLUG 1/4X13/32X13/32X1/8	4.000
504643	RVT POP DOME SS OE 3.2 (9.5_12.7)	11.000
509558	MOULDING, PLASTIC BLACK (FT)	1.000

Jigs required to install the barrier

<b>G37535</b>	FLOOR DRILLING JIG	
<b>G36360</b>	ROOF DRILLING JIG	
<b>G37696</b>	DRIVER'S BACK SCREEN JIG	

<p><b>G37616</b></p>	<p>PASS. MODESTY LATCH COVER JIG</p>	
----------------------	--------------------------------------	---

<p><b>NOTE</b></p>
<p><i>Material can be obtained through regular channels.</i></p>

Tool requirement for this installation.

<p>Ratchet &amp; socket set (SAE &amp; Metric – 3/8in drive)</p> 	<p>No 3 Phillips screwdriver (and/or drive bits)</p> 	<p>Cutting plier</p> 	<p>Hexagonal “Allen” type socket set</p> 
<p>SAE drill bit set (incl 1/8, 1/4, 7/32 &amp; 9/32in)</p> 	<p>Short 9/32in drill bit</p> 	<p>Drill bit stoppers set (incl. 7/32 &amp; 9/32in)</p> 	<p>Hand riveter (Pop type rivets)</p> 
<p>Torx tamper proof socket set</p> 	<p>Torx socket set</p> 	<p>1/4-20 Manual tap (finishing)</p> 	<p>Medium strength thread locker (blue)</p> 
<p>Large trigger clamp</p> 	<p>Torque wrench (small 1/4 drive in lb-in)</p> 	<p>Deburring drill bit for 9/32in hole</p> 	<p>Electric drill (3/8in shank)</p> 

<p><u>Recommended</u> : Impact screwdriver</p> 	<p>90 deg Angled head drill (for use with 9/32in short drill bit)</p> 	<p>Measuring Tape (Metric + SAE)</p> 	<p>Glass Suction Cups</p> 
<p>Yellow Torque Seal</p> 	<p>Precision Screwdriver Set</p> 	<p>Center Punch</p> 	<p>1/16 &amp; 1/8in Body aling.shims</p> 

## SAFETY PRECAUTIONS

- Eye protection should always be worn when working in a shop.
- Rules for Personal Protection Equipment should always be respected. Wear your PPE including but not limited to the following:



# Safety First!



## PROCEDURE



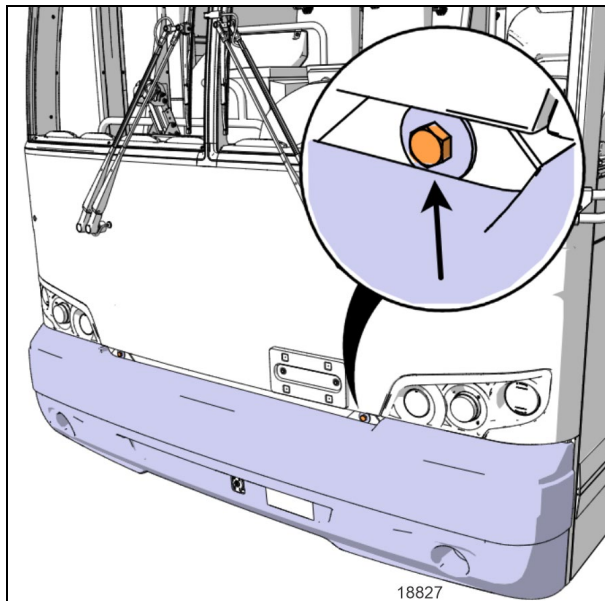
**DANGER**

Park vehicle safely, apply parking brake, stop engine. Prior to working on the vehicle, set the ignition switch to the OFF position and trip the main circuit breakers equipped with a trip button. On Commuter type vehicles, set the battery master switch (master cut-out) to the OFF position.

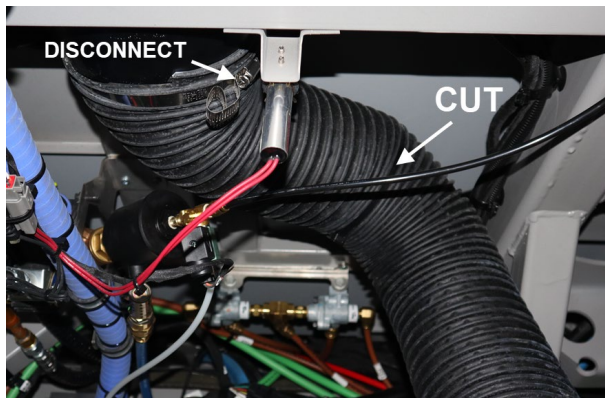
Lock out & Tag out (LOTO) must be performed during set-up, maintenance or repair activities. Refer to your local procedure for detailed information regarding the control of hazardous energy.

## PART 1: DRILLING THE POSTS HOLES IN THE VEHICLE STRUCTURE

1. Open the front bumper to access the AC conduit behind it.



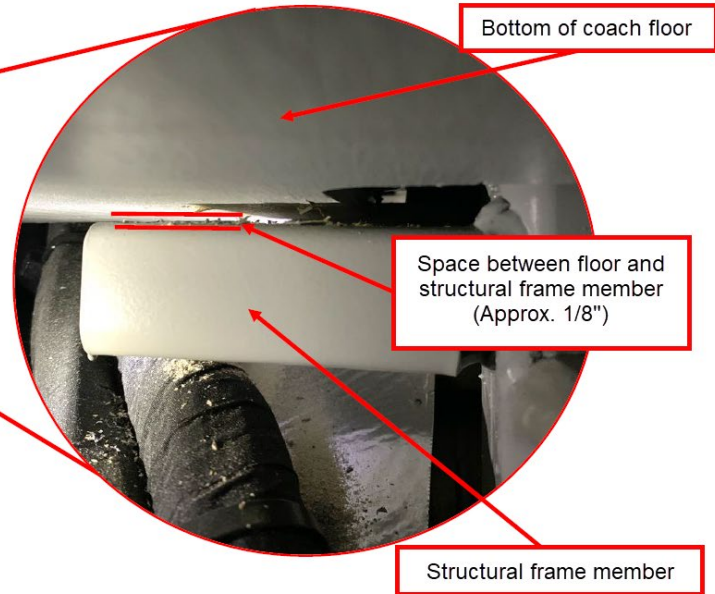
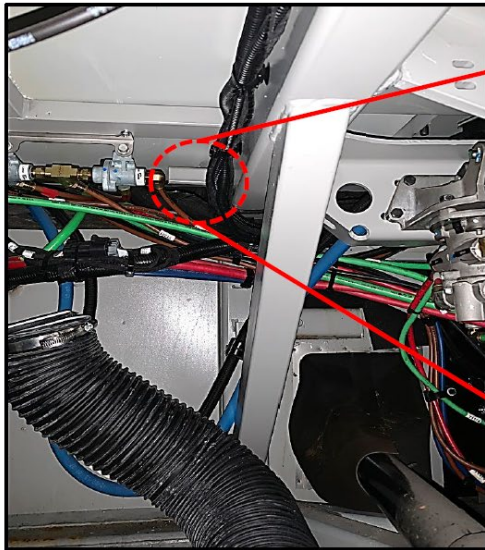
2. Cut the cable tie holding the conduit to the top of the compartment and disconnect the conduit (hose clamp).



3. Remove the tie mount.
4. Move the conduit away from the working area.



5. **IMPORTANT:** Validate if there is a gap present between the bottom of the vehicle floor and the structural frame member as shown below.
- If a gap is present, follow “special instruction” note regarding shim(s) addition in step 3 of Part 2 (hinged post installation).
  - If no gap is present, skip the special instruction.

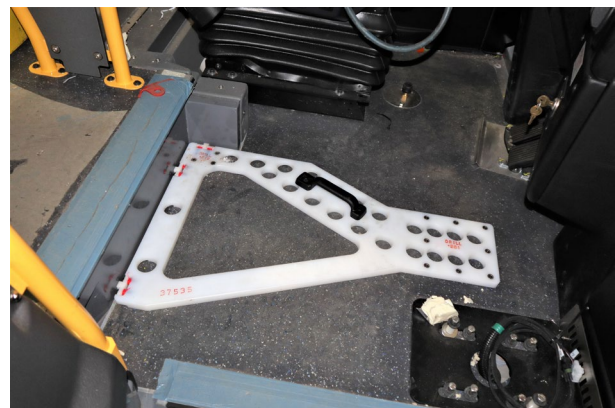
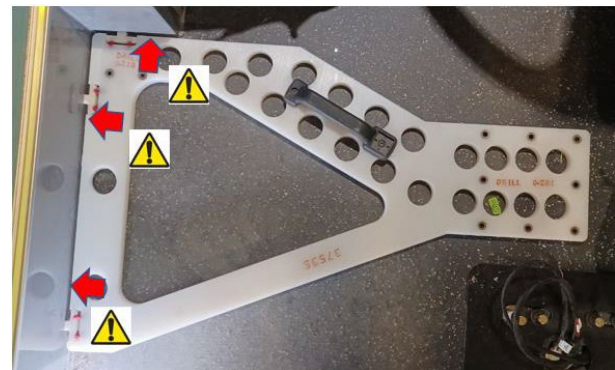
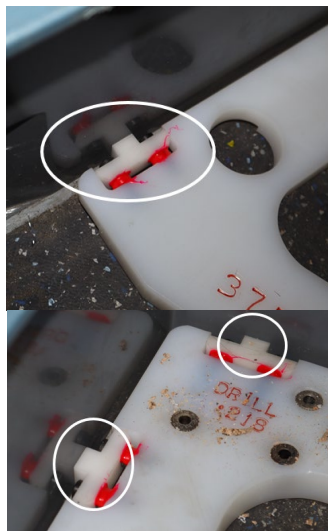


6. Inside the vehicle, position jig **G37535** on the floor making sure the contact points of the jig are contacting the vehicle structure (step) as shown in the pictures.



**IMPORTANT**

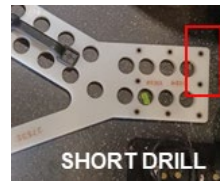
CHECK FOR PROPER CONTACT



7. Drill the **ZONE A** 3 holes using a 7/32in drill bit (use a drill stopper at 53mm from the tip of the drill bit).
8. Drill the **ZONE B** 8 holes using a 9/32in drill bit (see note).

**NOTE**

Use a short bit or an angle drill for **ZONE B** holes under dashboard (2 holes).



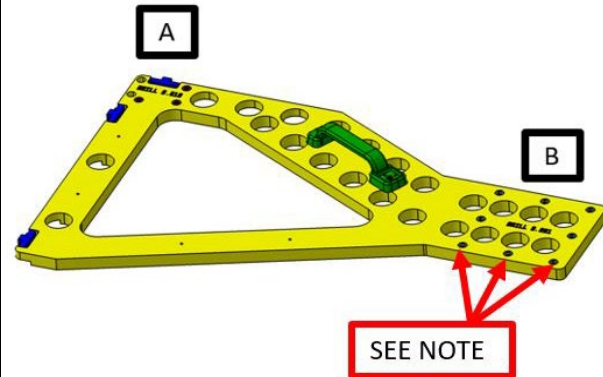
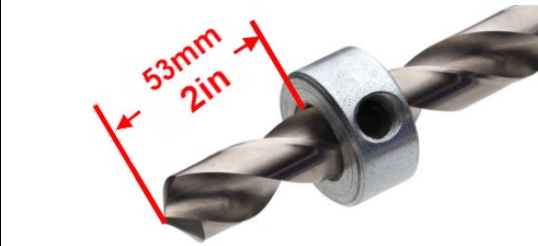
**NOTE**

The 3 holes close to the farebox must be drilled thru both walls of the square tubing.



9. Underside (bumper compartment), debur the holes from metal and wood chips as necessary.

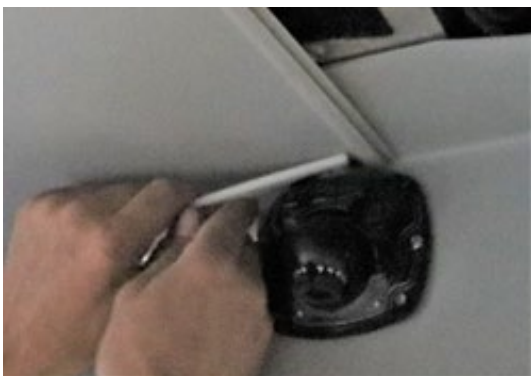
10. Remove the roof panel located over the driver/entrance area as shown.



11. Also remove the transition trim.

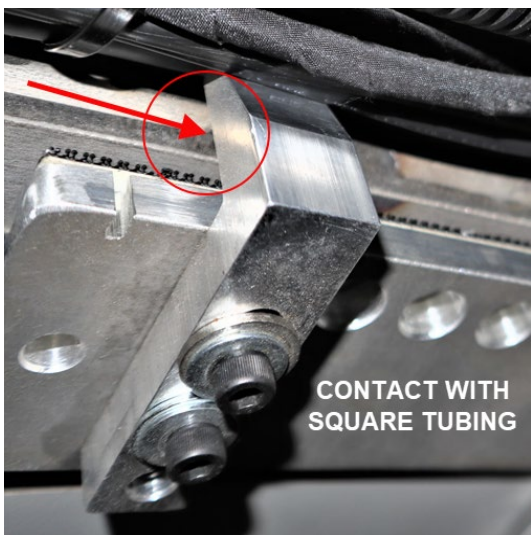
**NOTE**

Upon reinstallation of the roof panel, make sure that panel fits perfectly in the gutter (transition trim).



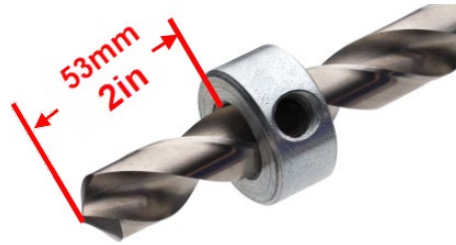
12. Install jig **G36360** at the edge of the now exposed roof square tubing as shown.

**IMPORTANT:** Make sure the 3 contact legs of the jig are seated against the vehicle as shown.



**NOTE**

Removal of the camera cover may be required to install the jig.

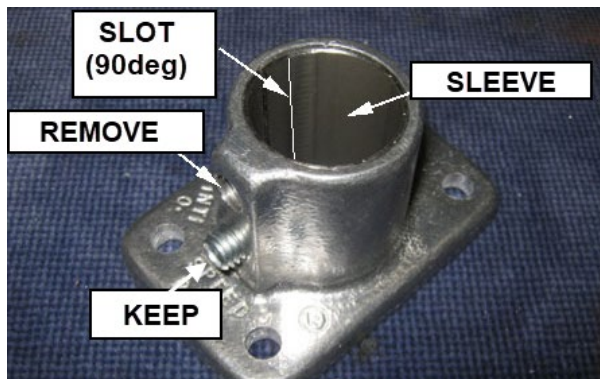


13. Drill 4X the 7/32in holes in the vehicle roof (use drill stopper, 53mm from the tip).

## PART 2: HINGED POST INSTALLATION

1. Prepare the two post supports (upper support **5011313** shown, lower support **403924** is black with only 3 holes).

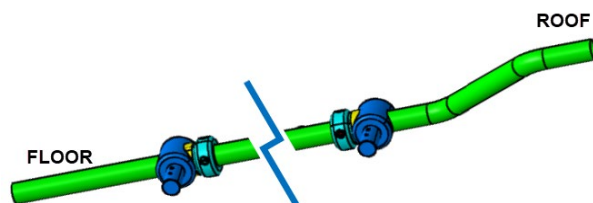
- Supports are supplied with 2 set screws, keep the set screw closer to the support flange, discard the other set screw.
- Insert the split sleeve **402149** in the supports making sure that the sleeve slot is inserted at 90deg vs the set screw.
- Hand tight the supplied **502634** set screw to maintain the sleeve in place.



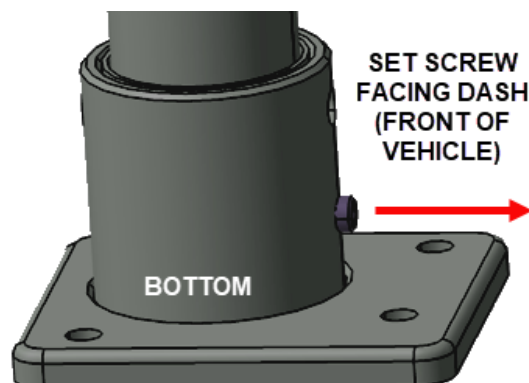
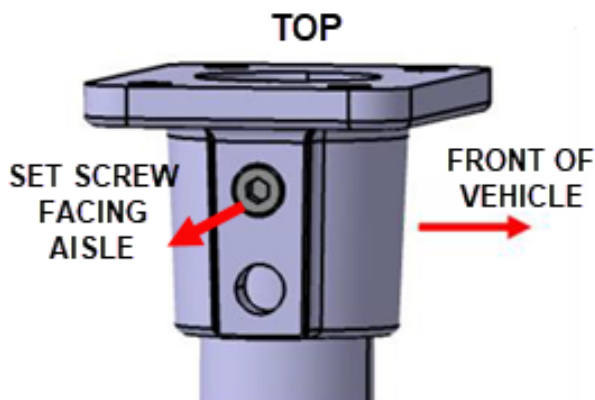
2. Position the hinged post (longest post) inside the vehicle.

- Install the supports at both ends of the hinged post (3 holes at the bottom & 4 holes on top).
- Slide the post in position over the previously drilled holes in the vehicle roof and floor.

**IMPORTANT:** The curved end of the post must be positioned facing up (roof position)



**IMPORTANT:** The top (roof) support set screw must be facing the vehicle aisle and the bottom (floor) support set screw must be facing towards the front of the vehicle as shown in the pictures.



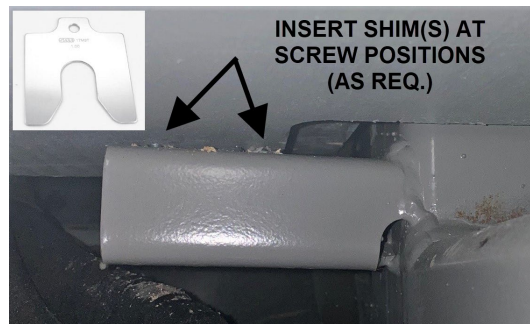
3. Secure the bottom support to the floor.

- Make sure the support is still positioned over the floor holes.
- Secure (temporary) the support using 3 supplied self tapping screws **500625**.
- Remove the self tapping screw and replace them with 3 supplied **5001733** screws with blue (medium strength) thread locker.
- *If an air gap was previously noted under the post support (Part 1 Step 5) proceed with the special instruction (right column).*
- Apply final torque to all 3 screws.

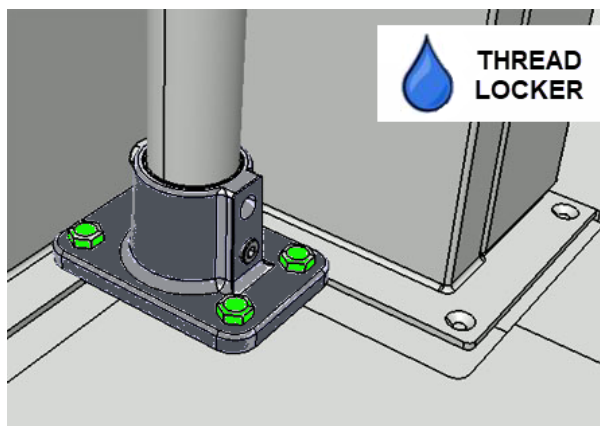
**TORQUE : 75 LB-IN**

**SPECIAL INSTRUCTION: AIR GAP**

If an air gap has been noted in the previous inspection, body alignment shims must be inserted at the screw position between the floor and the structural beam (this is necessary to achieve recommended torque value).



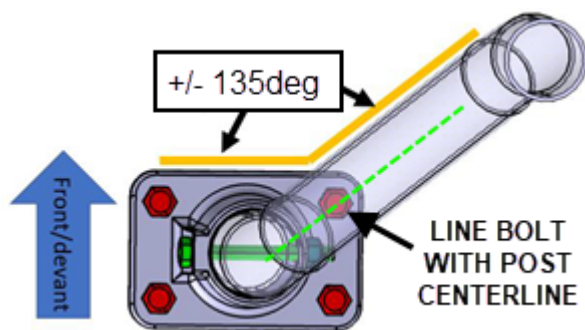
- Insert shims to fill the gap as much as possible between the bottom of the floor and the structural beam.
- Validate gap at all 3 screw positions (gaps can be different from one bolt to another).
- Shims can be stacked as necessary.
- Make sure that the shims did not move after final torque of the screws.



4. Secure the top support to the roof.

- Screw the temporary self tapping screws **500625** in the roof holes.
- Remove the self tapping screws and finish the threads with a 1/4-20 manual tap.
- Secure the top support using 4 supplied **5001733** screws (use blue medium strength thread locker).
- Block the rotation of the post using the top & bottom support set screws.

**IMPORTANT:** Make sure that the post centerline is centered with the support bolt (making a +/-135deg angle with the top support) as shown in the picture below.



**TORQUE : 65 - 75 LB-IN**

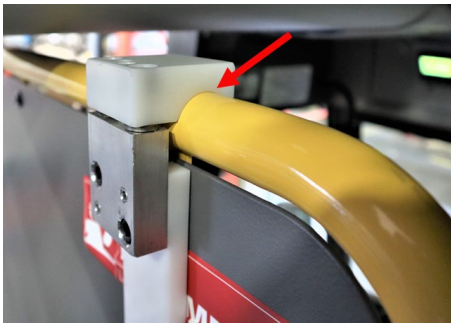
## PART 3: PLEXIGLASS REAR PANEL INSTALLATION

1. Install jig **G37696** over the driver's back panel.



### IMPORTANT

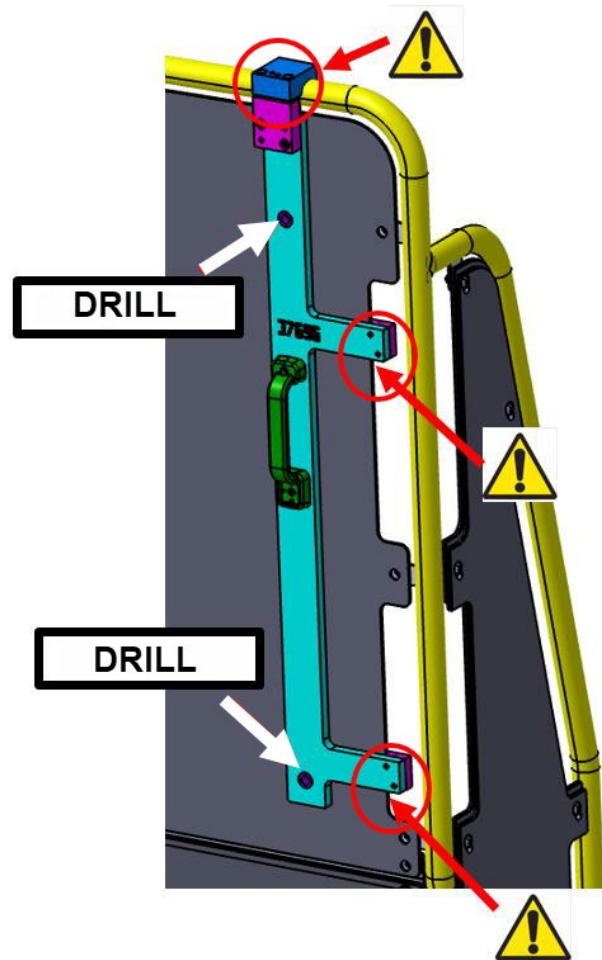
CHECK FOR PROPER CONTACT.



2. Drill the two **9/32in** holes in the back panel.

### NOTE

Use a center punch to mark the drill position as required



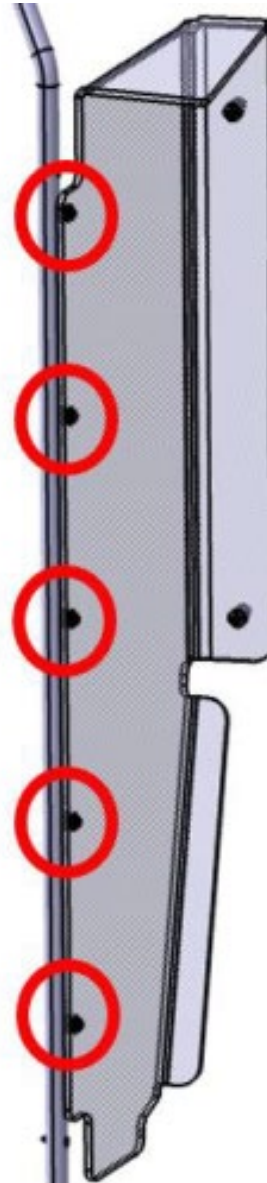
3. Remove protective film from the back plexiglass panel.

4. Secure the plexiglass panel to the post using the supplied hardware listed below.

- Insert two **900251** grommets (1) in each of the plexiglass five panel holes (one on each side).
- Insert a sleeve **505539** (2) in all holes.
- Secure the panel to the post using **500436** screws (3) with corresponding hardware: large washers **500805** (4), snap-cap washers **504399** (5) and small washers **500855** (6).

**TORQUE : HAND TIGHT + 3/4 TURN MAX**

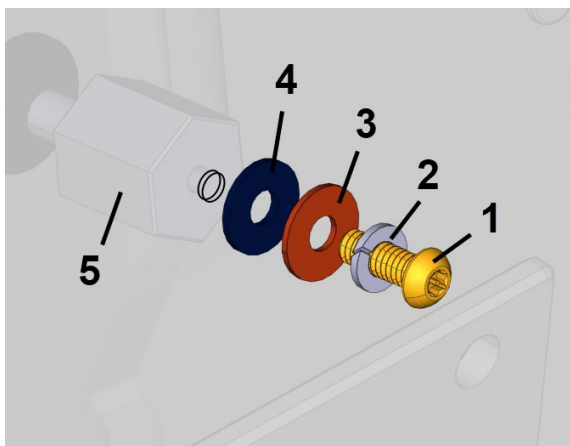
- Once secured at all 5 positions, clip a **504400** snap cap (7) over the screw heads.



5. Secure the plexiglass back panel to the driver's back panel using supplied hardware installed in the two previously drilled holes (part 3 - step 2).

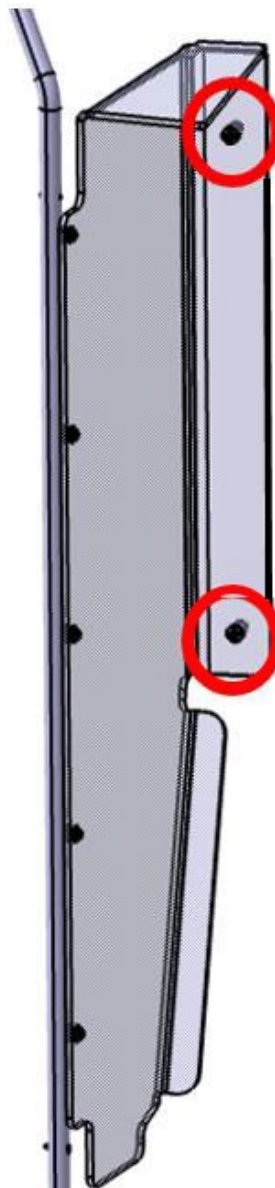
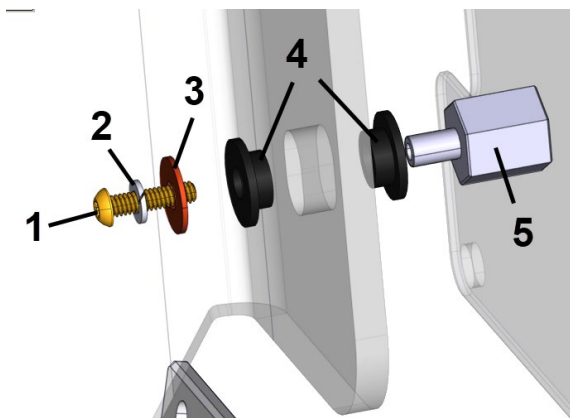
- Insert the hex spacers (5) between the plexiglass and the drivers back panels.
- On the drivers back panel side, secure each **3211550** hex spacer (5) using a **5002197** screw (1), a **500477** lock washer (2), a **500411** washer (3) and a **5001114** nylon washer (4) as shown.

**TORQUE : 65 - 75 LB-IN**



- Secure the plexiglass side to the hex spacers (5) using the following hardware: two **900251** (4) grommets (one on each sides), a **5002196** screw (1), **500477** lock washer (2) and large **500332** washer (3).

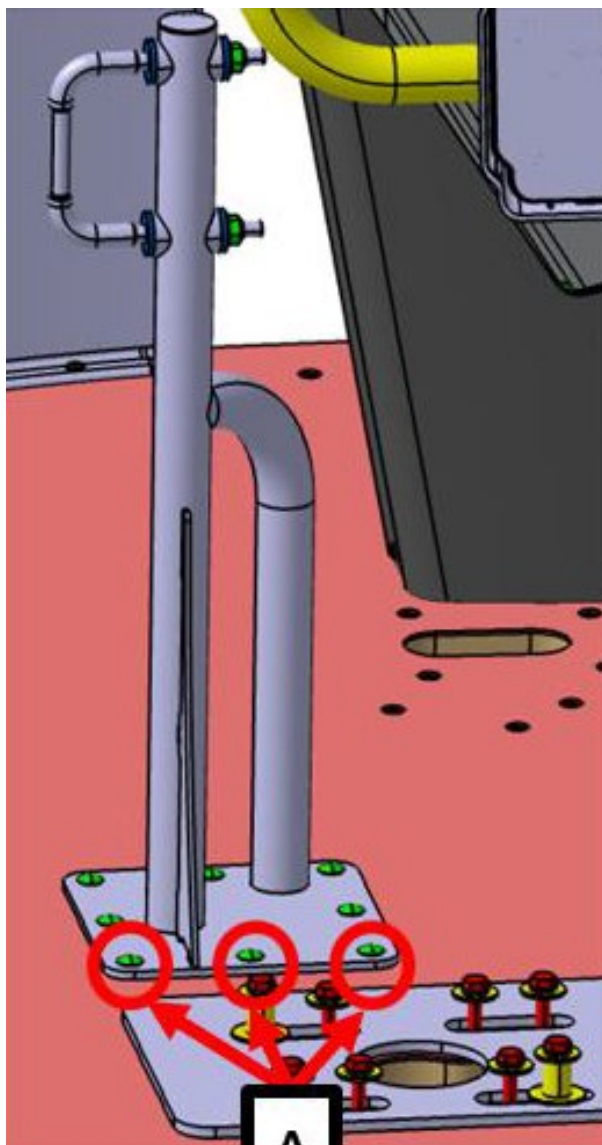
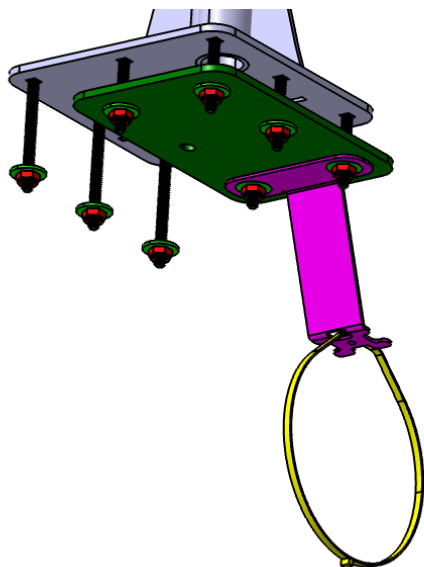
**TORQUE : 65 - 75 LB-IN**



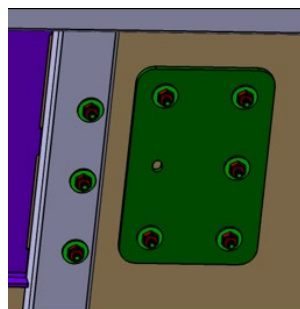
## PART 4 : LATCH POST INSTALLATION

1. Position the latch post (short post) over the previously drilled hole in the vehicle floor.
2. Insert the carriage bolts in the corresponding holes.
  - The long **5002217** carriage bolts must be installed at position "A", close to the farebox (see right picture).
  - Install the short carriage bolts **5002218** in the other locations.
3. Under the vehicle floor (bumper compartment), secure the post with the supplied hardware.
  - Use a **502874** nut and a **500142** washer directly with the 3 long carriage bolts.
  - A **402227** reinforcement plate must be used under the short bolt locations before installing the **502874** nut and **500142** washer.
  - The **406775** A/C hose relocation bracket must also be installed at the rearmost position (short bolts). The bracket must be facing rearward as shown in the picture below.
4. Torque all 8 nuts (short & long bolts).

**TORQUE : 75 LB-IN**



**A**



5. Reinstall the A/C hose in the bumper compartment.

- Slide the hose over the duct opening and tighten the hose clamp.
- Attach the hose to the new relocation bracket using the supplied **504637** cable tie.
- Close and secure the bumper.

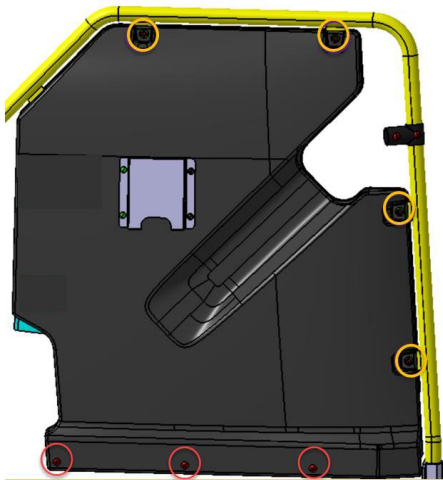


## PART 5: PASSENGER MODESTY SCREEN INSTALLATION

1. Remove the left handrail from the vehicle.

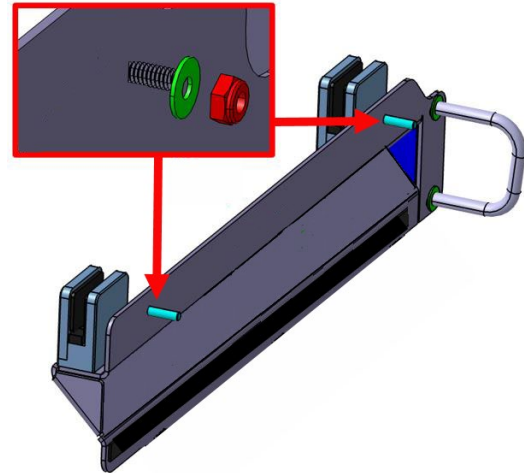
2. Remove the passenger modesty cover.

- Unscrew the top and lateral holding screws.
- Remove the retaining washers.
- Remove the 3 bottom plastic rivet.



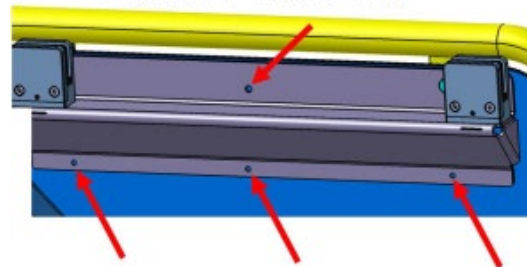
3. Install the glass holder at the back of the modesty panel (seat side).

- Insert the glass holder studs in the modesty's top screw tabs (in place of the factory temper proof screws).
- Temporary secure the holder with two **502874** nuts as shown (hand tight +  $\frac{3}{4}$  turn).



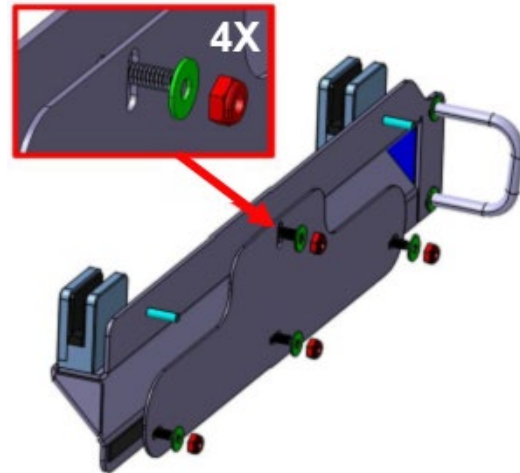
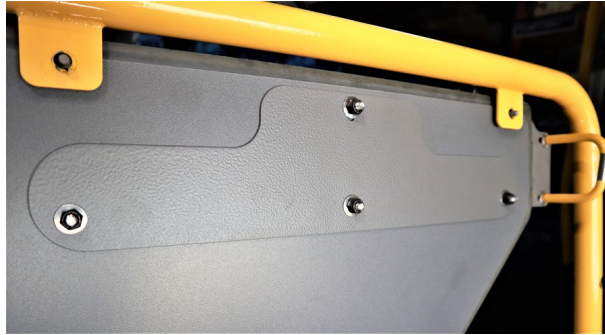
4. Drill the 4 holder brace holes in the modesty panel using a 1/4in drill bit.

**DRILL 4X 1/4in**



5. Install the **406805** holder brace plate on the other side of the modesty.

- Insert a **5002196** screw in each drilled hole and secure using **5001833** washers and **502874** nylock nuts.



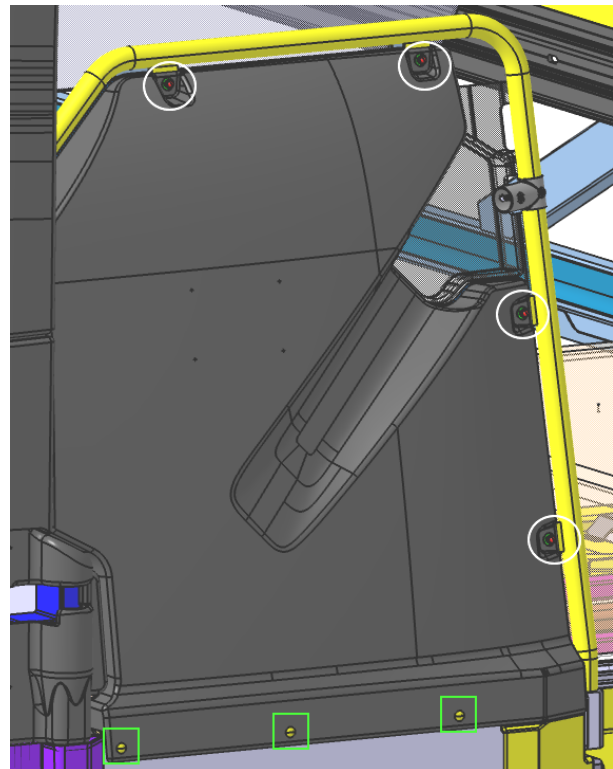
**TORQUE : 75 LB-IN**

6. Reinstall the modesty panel cover.

- Remove the glass holder temporary **502874** nuts.
- Put the cover in place and secure using new supplied **502582** serrated washers (discard the two top screws).

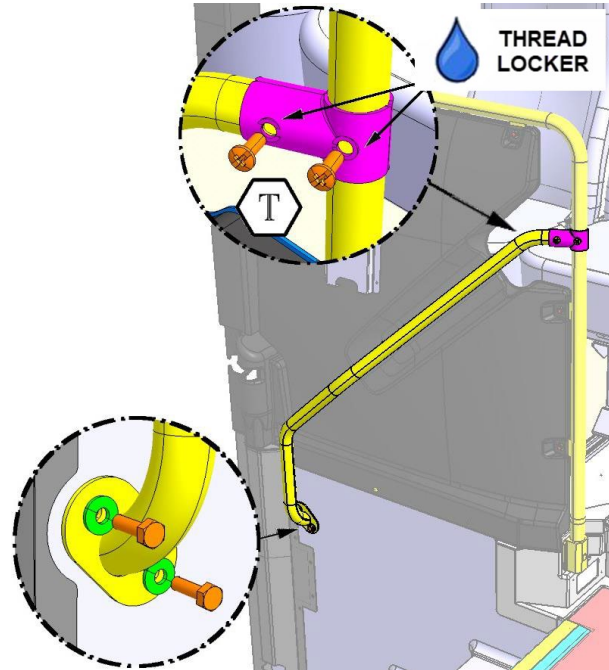
**TORQUE: 65 - 75 LB-IN**

- Install 3 new supplied **5001438** plastic rivets at the bottom of the cover.



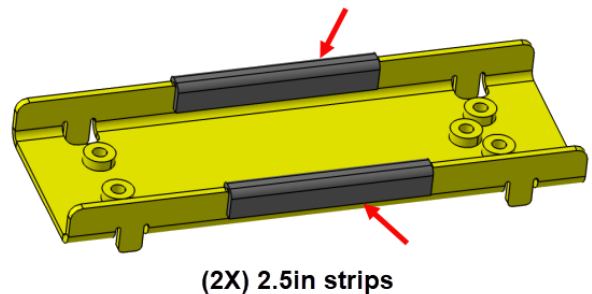
7. Reinstall the previously removed handrail.

- Use blue, medium strength thread locker on the top “T-clamp” screws.
- **Torque all bolts** (top and bottom) to:  
**MINIMUM 106 lb-in**



8. Prepare the top modesty bracket.

- Cut two 2.5in strips of the supplied **509558** rubber strip.
- Install the strips at the center of the **402203** modesty bracket as shown.

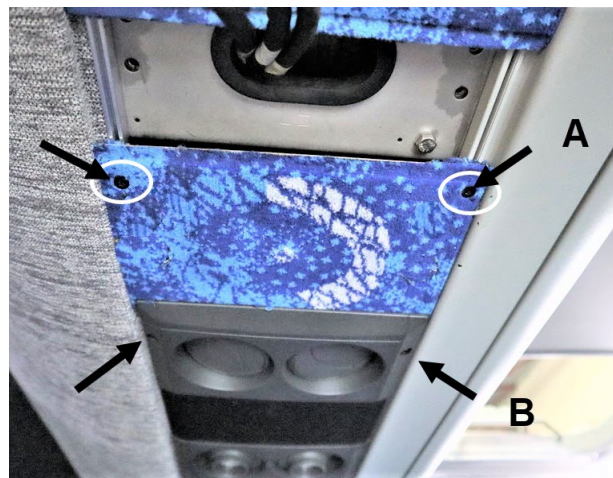


9. Remove the carpeted panel under the first passenger side parcel rack (keep aside for as a spare part).

- Loosen (halfway) the console screws (B).
- Remove the two panel screws and remove the panel to gain access to the inside area.

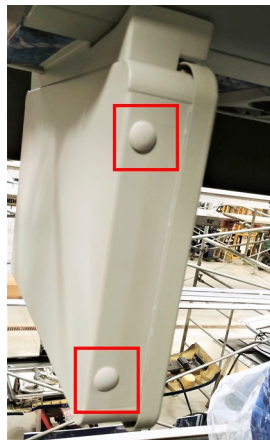
10. Insert the modesty bracket inside the parcel rack rails, next to the screen bracket.

- Insert the bracket.
- Position the bracket 5.5in from the parcel rack front edge as shown.



### OPTIONAL STEP: SCREEN REMOVAL

For this part of the installation, screen & support removal is recommended (if so equipped).



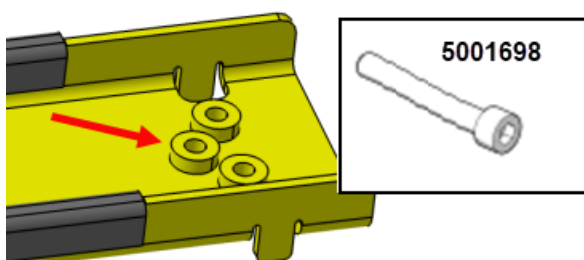
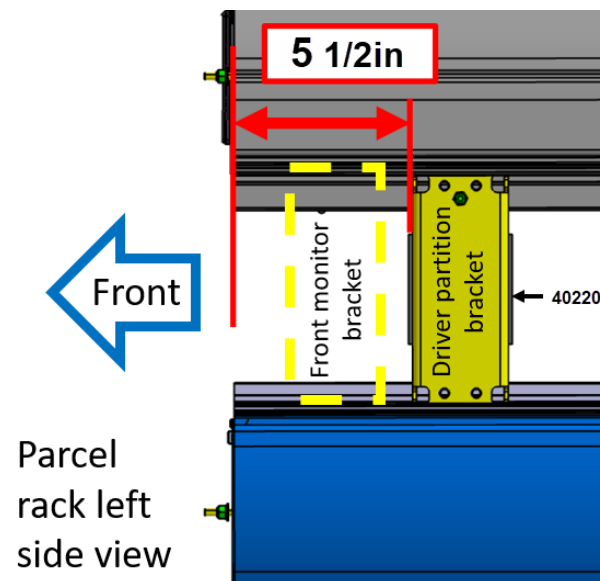
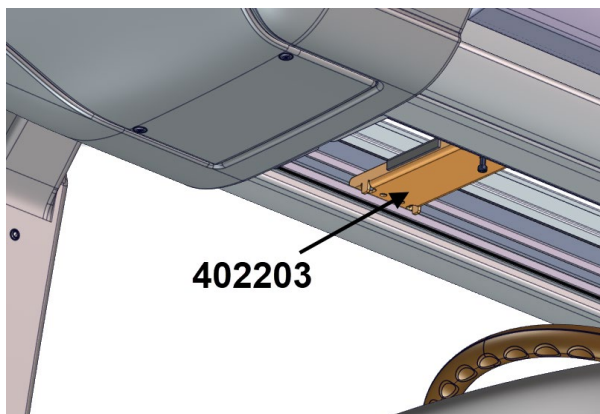
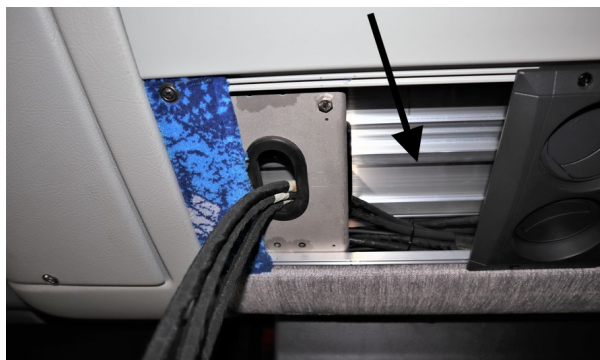
- Remove the screw caps on both sides of the screen assembly.
- Remove the 4 screen screws.
- Disconnect the screen.
- Remove the screen back cover.



- Remove the support from the parcel rack.



- Reverse the steps for reinstallation but check for proper screen function first.



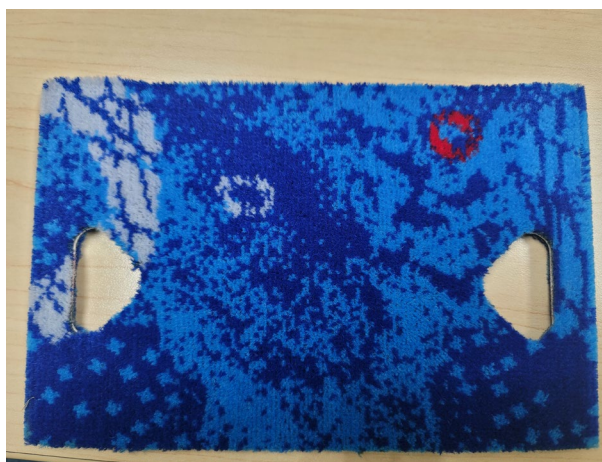
11. Secure the Modesty screen top bracket to the parcel rack.

- Screw-in the supplied **5001698** Allen head screw in the bracket "third" hole (inside hole aisle side) until it makes contact with the parcel rack underside.
- Tighten the screw, this will apply pressure to the bracket holding tabs. Continue until the bracket is firmly in place and cannot be moved by hand.



12. Install the replacement 314945P carpeted panel (with holes)..

- Secure the carpeted panel and the overhead console.
- If previously removed, reinstall the screen and support (use yellow Torque Seal paint on all bolts).
- Make sure to connect the screen and check for proper function before securing to the support

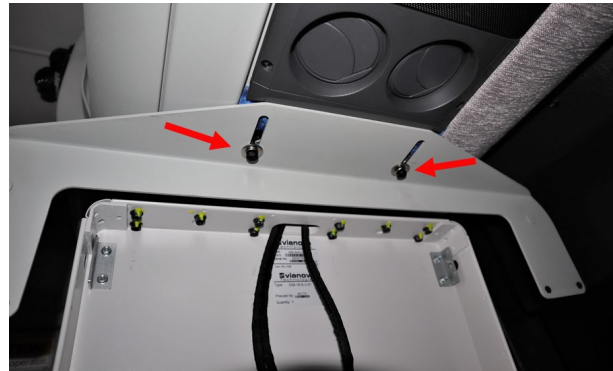


13. Install the modesty screen top bracket with shim.

- Put in place the top bracket using only 2 of the supplied **5000310** screws (with matching **500477** lock washers and **500142** washers).
- Before the screws are installed, the provided 315013 shim must be inserted between the bracket and the carpeted panel.

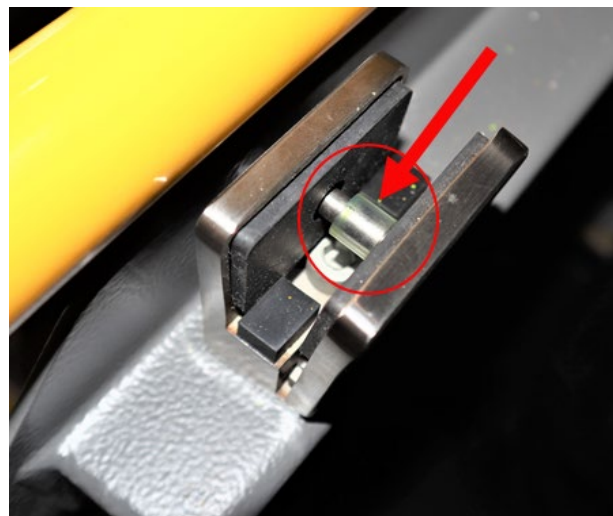
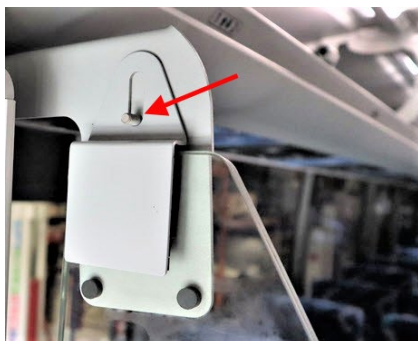
**NOTE:** The bracket slotted holes must face the rear of the vehicle.

- Hand tight only, the bracket must be free to slide and tilt (slightly).



14. Install the modesty glass screen.

- Loosen the 2 lower clamps to allow room for the bottom part of the glass screen (*discard the clamp center pins*).
- Put the glass in place using a suction cup to help handling as required.
- Tilt the top bracket and insert the top bracket studs in the glass screen openings.

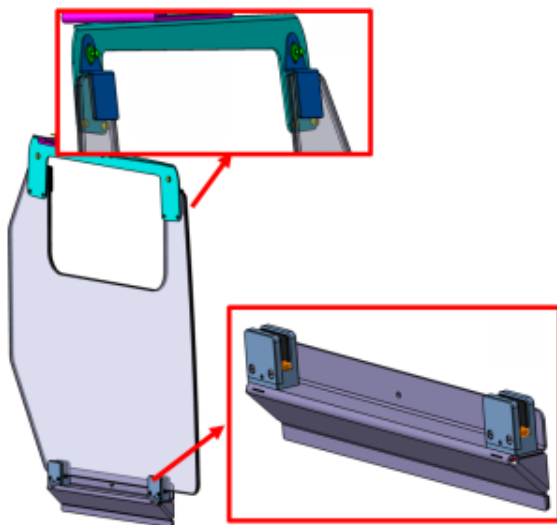


- Tighten the lower clamp screws to secure the bottom of the glass screen. Use medium strength (blue) thread locker.

**MANUAL TORQUE HAND TIGHT + 1/2 TURN: DO NOT OVERTIGHT**

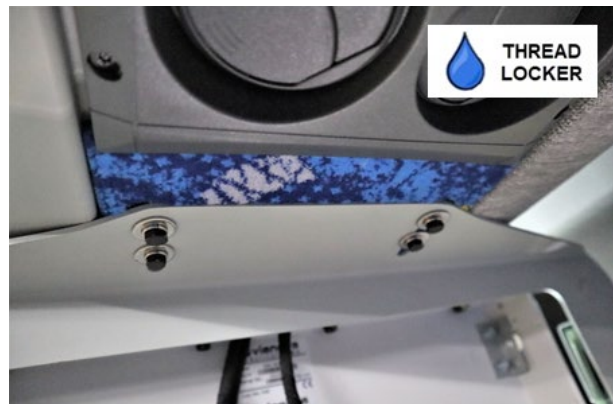
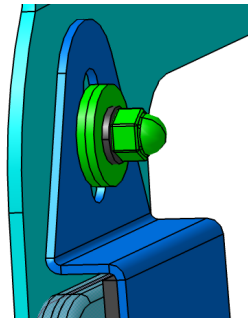
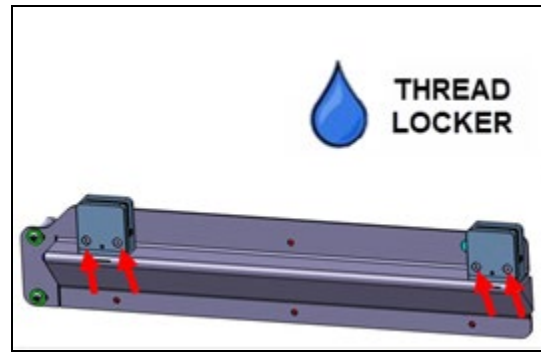
- Secure the top part of the glass screen to the bracket using a **5001684** nut with a **500477** lock washer and two **500142** washers at both bracket studs.

**TORQUE : 20 LB-IN**



- Secure the bracket to the underside of the parcel rack using two more **5000310** screws (with matching **500477** lock washers and **500142** washers). Use medium strength (blue) thread locker on all 4 screws.

**TORQUE : 65 - 75 LB-IN**



15. Install the modesty protective cover behind the door catch.

- Position the **G37616** cover jig at the back of the modesty pillar. Secure the jig with a trigger clamp or equivalent.

**NOTE**

There may be some interference with the lower ketch screw and the first generation jigs.

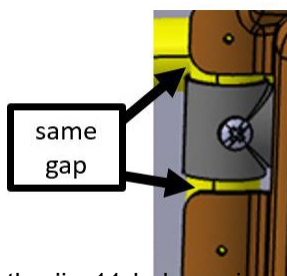
- If contact is present, temporarily remove the lower screw and washers.



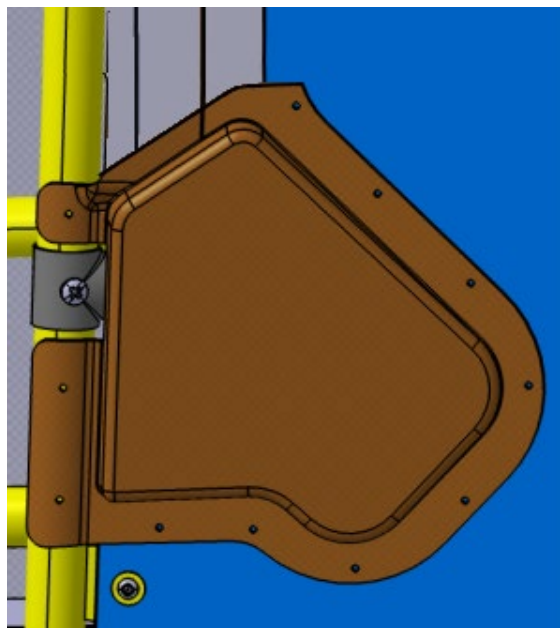
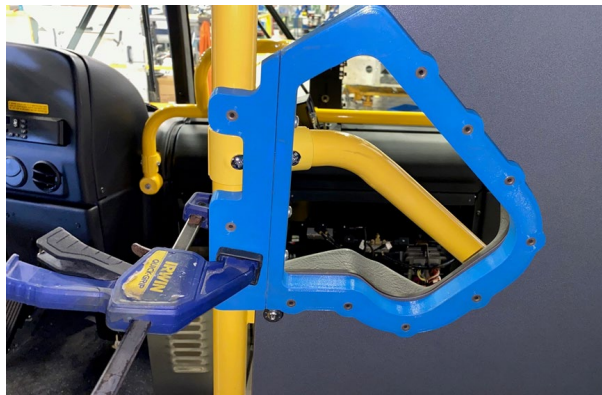
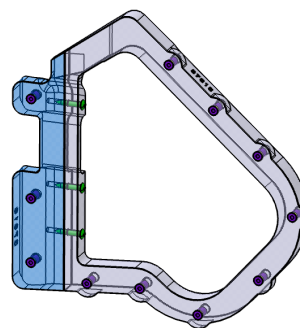
- Reinstall the lower screw and washers after cover installation.

**Torque:** hand tight with regular (non impact) screwdriver then add 1/2 to 3/4 turn.

- Make sure that the jig clears the handrail "T-clamp" with an equal gap top and bottom.



- Drill the jig 11 holes using a **1/8in** drill bit (3 holes in the metal pillar and 9 holes in the modesty panel).
- Install the **321662** cover over the drilled holes & insert the supplied **504643** "pop" type rivets. Secure the cover to the modesty using a correct tipped hand riveter.



## PART 6 : DOOR INSTALLATION

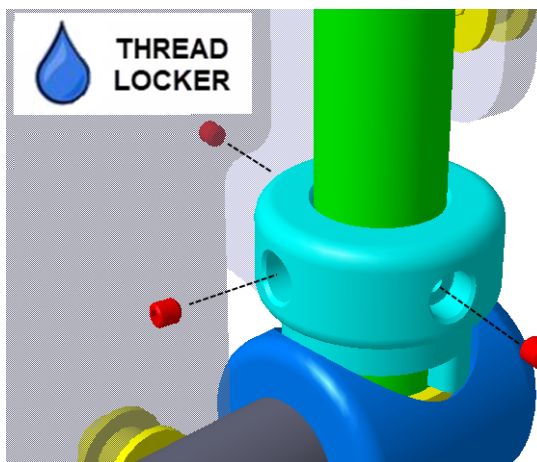
1. Slide the door frame on to the post hinges.

- Secure using the four supplied **5001783** socket head screws and use medium strength (blue) thread locker.

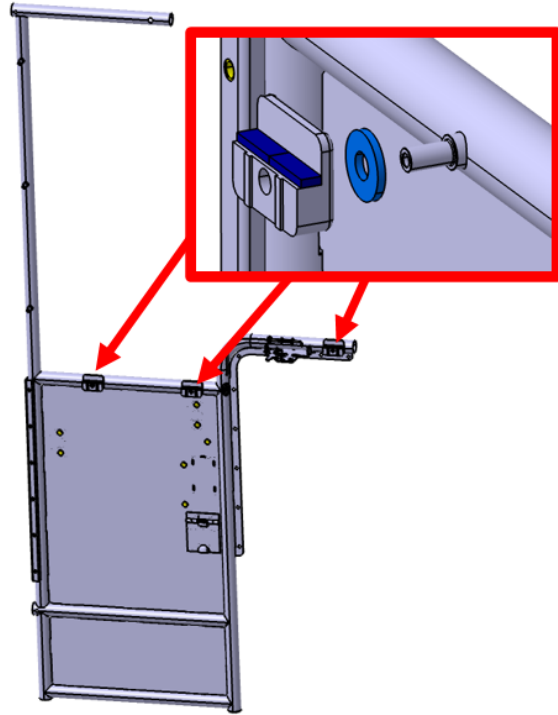
**TORQUE : 50 - 60 LB-IN**

- Also remove the 3 set screws securing the hinge stoppers to the post, add medium strength (blue) thread locker to the set screws and put them back in place as shown below (red set screw, do both upper and lower stoppers).

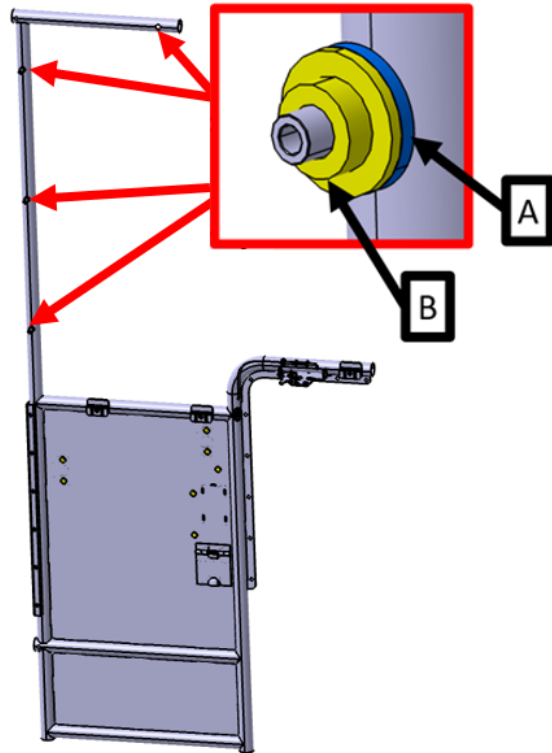
**TORQUE ; HAND TIGHT + ½ TURN**



2. Slide the 3 glass holders in the lower position with a supplied **5001443** washer behind each holder.

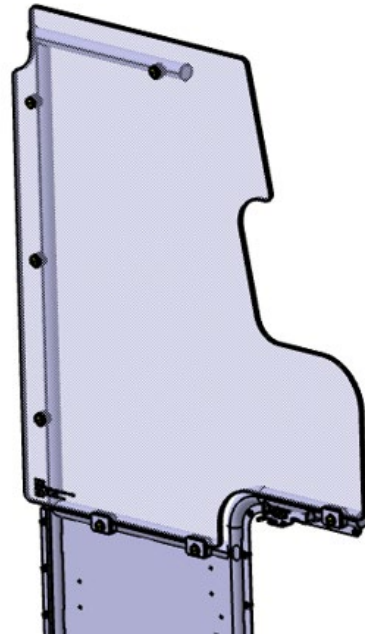


3. Install a **5001443** washer (A) and a rubber bushing **900251** (B) at the doors 4 upper positions.



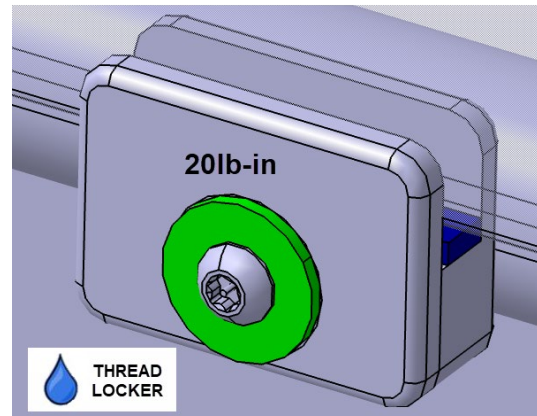
4. Install the **290815** glass on the door frame.

- Peel-off the protective film.
- Inspect the glass, make sure there are no cracks or major scratches and also make sure that there are no chips at the edge of the glass.
- Lower the glass on the frame.
- *Have someone to hold the glass in place* and proceed to the next step.



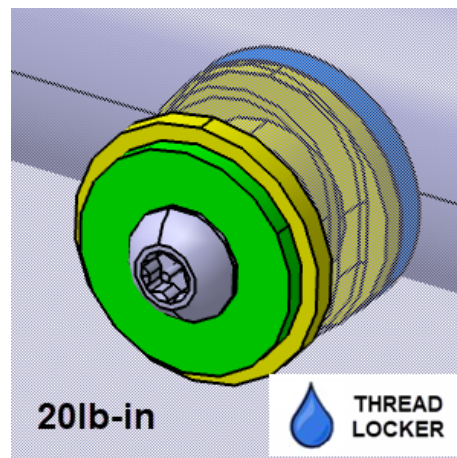
5. Secure the bottom part of the glass (in the plastic glass holders).

- Install the second half of the holders using a **500142** washer and a **5002196** screw (use medium strength (blue) thread locker).
- **Torque all 3 screws to 20lb-in.**



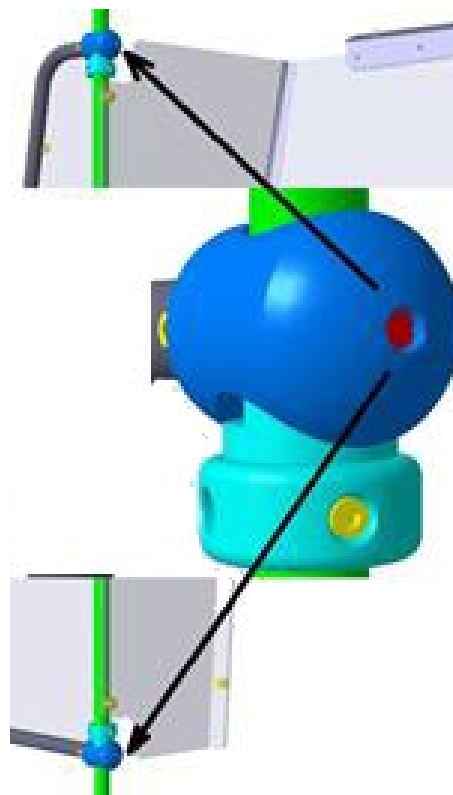
6. Secure the upper part of the glass (in rubber bushings).

- Insert another **900251** rubber bushing on the other side of the glass.
- Secure using a **500142** washer and a **5002196** screw (use medium strength (blue) thread locker).
- **Torque all 4 screws to 20lb-in.**



7. Adjust the 2 large set screws at the back of each hinge, give a little tension to slow the door movement slightly.

**TORQUE REQUIREMENT : door should not open on its own.**



## PART 7: DOOR FINAL ADJUSTMENT

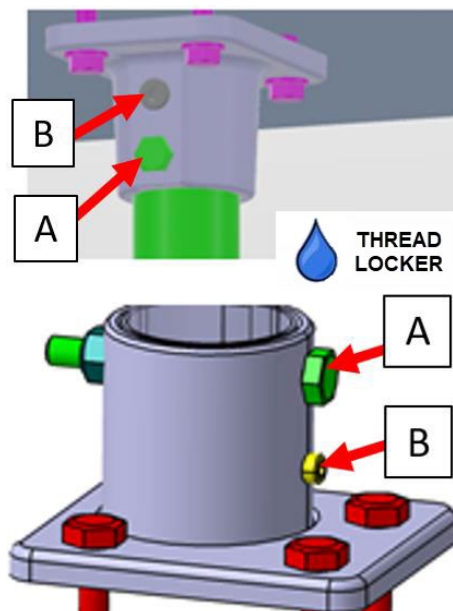
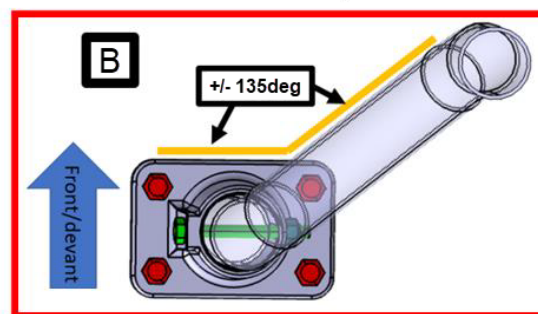
1. Adjust the door position so there is no contact with the vehicle farebox.

- Close the door and check for contact between the door arm and the farebox. There should be a 1/8in gap (minimum).
- If clearance is needed, loosen the top post mount (set screw) and twist the post slightly (modify the 135deg angle) to gain the required clearance.
- When correct clearance is achieved, remove both (upper and lower support) set screw (B) and add some medium strength (blue) thread locker to them and screw them back.
- Drill the post 1/4in at the support free hole (A) (upper and lower support). The hole must pass through the post.
- In both upper and lower holes, install a **5001710** screw (A) and **5001182** nut (use medium strength (blue) thread locker).

**TORQUE : 100 LB-IN**



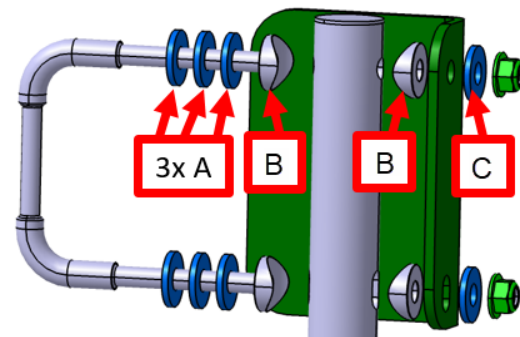
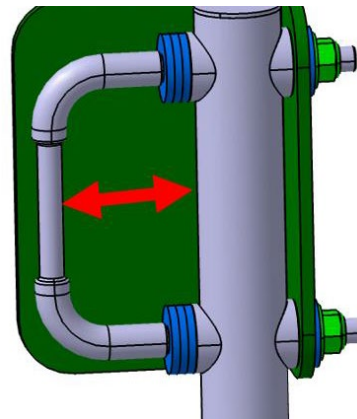
**A:** Farebox vs door clearance  
**B:** Upper post angle



2. Adjust the door closed position catch/latch.

- Close the door and make sure that the catch engage the post latch smoothly.
- If adjustment is needed, remove some shims (washers A) from the latch assembly as shown.

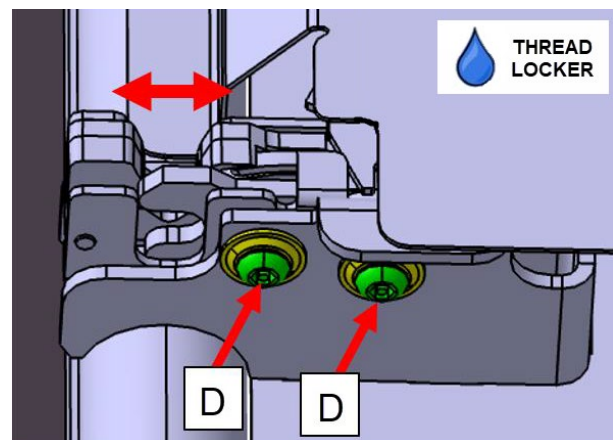
**TORQUE : HAND TIGHT + 3/4 TURN MAX**



3. Fine tune the closed position adjustment (as required).

- If needed, loosen the bottom screws (D) to adjust the catch position.
- If the screws are loosened, reinstall using some medium strength (blue) thread locker.

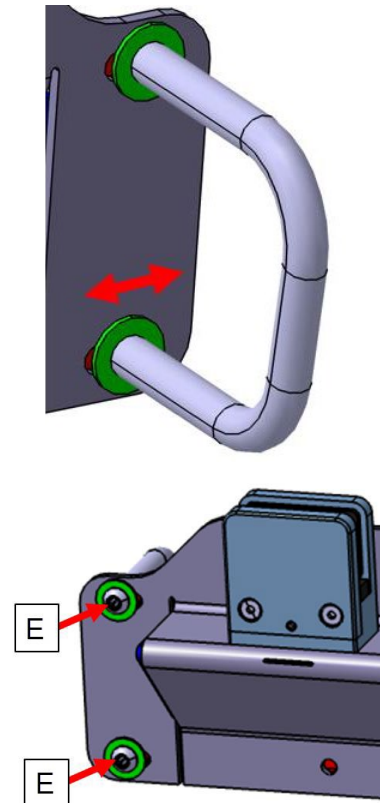
**TORQUE : 65 - 75 LB-IN**



4. Adjust the door open position catch/latch.

- Open the door and make sure it locks smoothly (modesty latch).
- If some adjustment is required, loosen the rear catch bolts (E) and move the catch in the slotted support until correct adjustment is obtained.

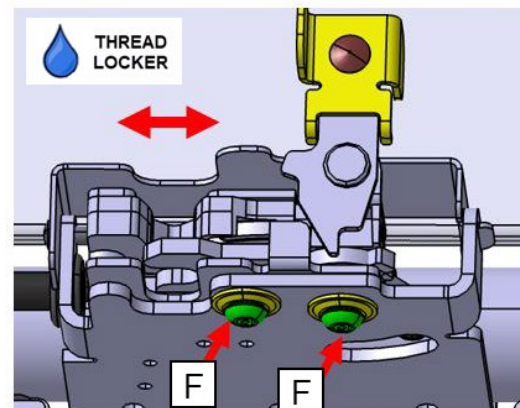
**TORQUE : 65 - 75 LB-IN**



5. Fine tune the closed position adjustment (as required).

- If needed, loosen the bottom screws (F) to adjust the catch position.
- If the screws are loosened, reinstall using some medium strength (blue) thread locker.

**TORQUE : 65 - 75 LB-IN**



## PARTS / WASTE DISPOSAL

Discard waste according to applicable environmental regulations (Municipal/State[Prov.]/ Federal)