 Technical Service Bulletin	GROUP CAMPAIGN	NUMBER 23-01-012G
	DATE FEBRUARY, 2023	MODEL(S) GV70 (JK1)
SUBJECT: ADVANCED DRIVER ASSISTANCE SYSTEM (ADAS) - REMOTE SMART PARKING ASSIST SOFTWARE UPDATE (SERVICE CAMPAIGN T30G)		

★ IMPORTANT

Dealers must perform this service campaign on all affected vehicles prior to customer retail delivery and whenever an affected vehicle is in the shop for maintenance or repair.

Access the "Vehicle Information" screen via WEBDCS to identify open campaigns.



Description: This bulletin provides information related to the ADAS Parking system software upgrade for certain 2023MY GV70(JK1) vehicles.

The RSPA (Remote Smart Parking Assist) parallel parking function may not work properly. When the RSPA button is pressed inside the vehicle, the parallel park target position may not be identified. As a result, the RSPA system may cancel without any prompts. This service procedure provides the steps to perform a software update to the logic for the RSPA parallel parking function.

Applicable Vehicles: Certain 2023MY GV70 (JK1) vehicles equipped with 2.5L Turbo and 3.5L Twin Turbo engines produced between May 03, 2022 to October 28, 2022.

SUBJECT: Advanced Driver Assistance System (ADAS) - Remote Smart
Parking Assist Software Update (Service Campaign T30G)

GDS Event # Table:

SYSTEM	EVENT #	Description
ADAS_PRK	914	914.JK1 23MY ADAS_PRK S/W UPDATE(RSPA)

ROM ID Information Table:

MODEL	SYSTEM	RSPA P/N	ROM ID	
			OLD	NEW
GV70 (JK1)	ADAS_PRK	99910-AR010	1.00, 1.01	1.03

Warranty Information:

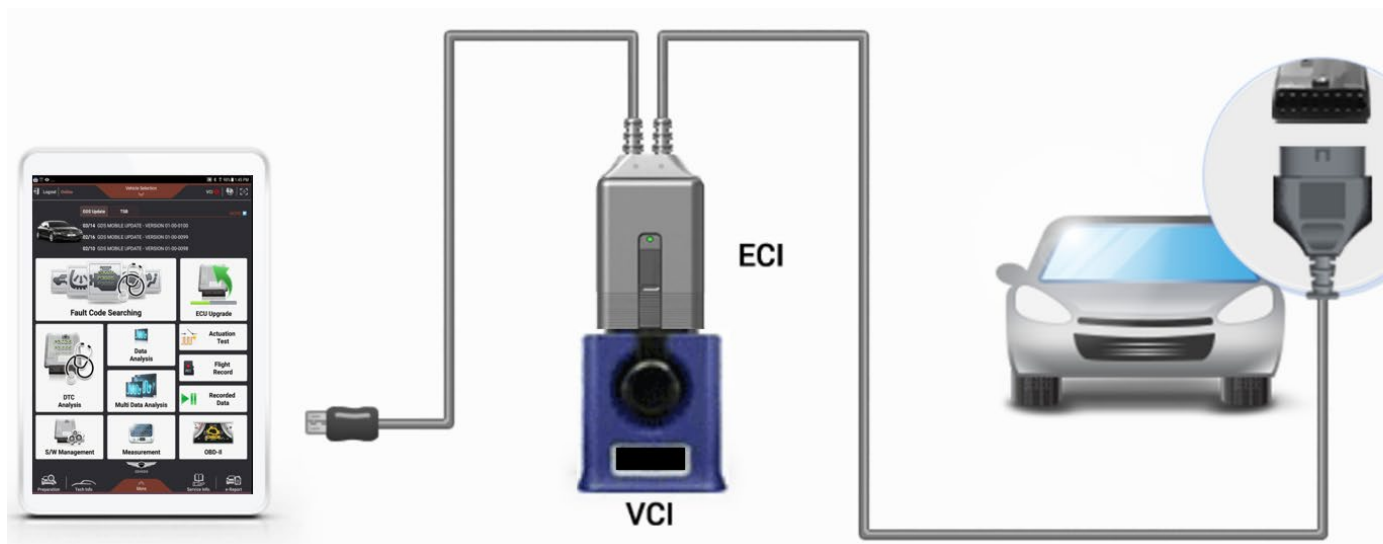
MODEL	OP. CODE	OPERATION	OP. TIME	CAUSAL PART	NATURE CODE	CAUSE CODE
GV70 (JK1)	20D161R0	ADAS UPGRADE	0.3 M/H	99910-AR010	I14	ZZ3

NOTE 1: Submit Claim on Campaign Claim Entry Screen

NOTE 2: If a part that is not covered by this service campaign is in need of replacement while performing this service campaign, and the affected part is still under warranty, please submit a separate claim using the same repair order. If the affected part is out of warranty, submit a prior approval request for goodwill consideration prior to performing the work.

CONTROL UNIT UPGRADE PROCEDURE USING THE GDS-Mobile

1. GDS (Global Diagnostic System)-Mobile & ECI (Ethernet Communication Interface) INSTALLATION PROCEDURE

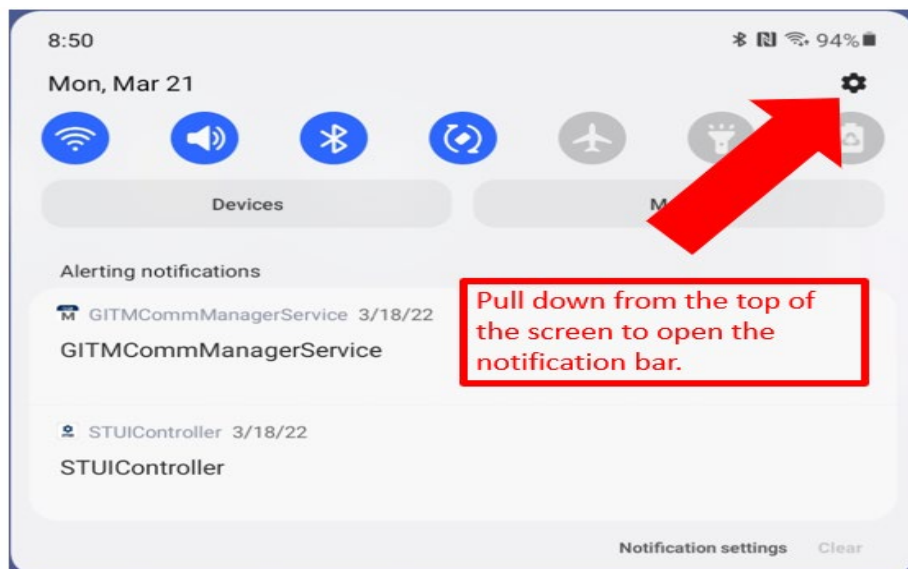


NOTE: ECI Module will need to be connected to tablet and vehicle when attempting to enter Ethernet connection settings.

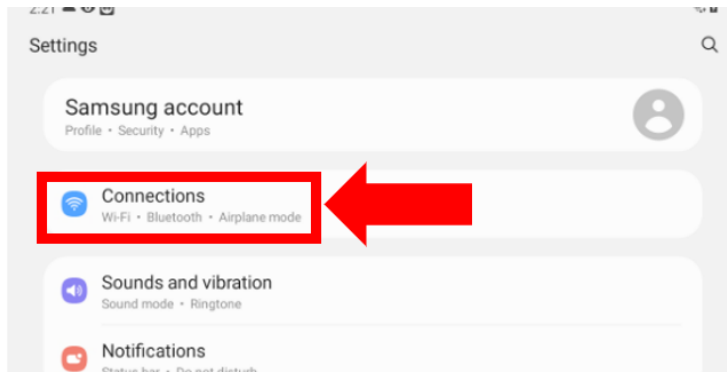
- Genesis ECI Package: Part # G0XDDMN052
- Contact GIT America for support @ (888) 437-0308

Complete the following steps to establish an Ethernet connection with your ECI Module through the tablet settings.

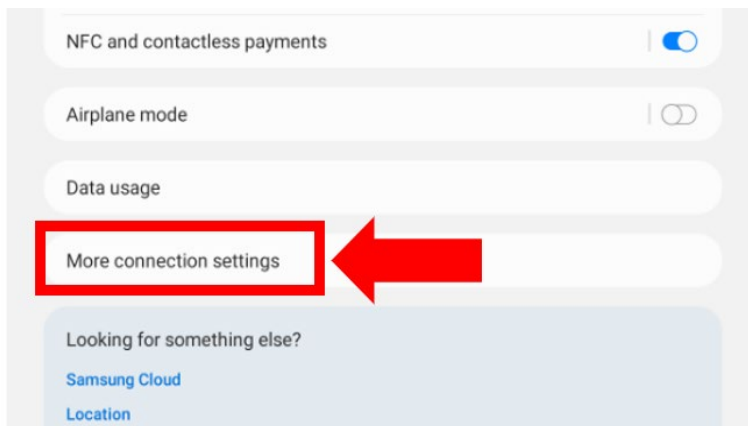
Step 1: Open tablet “Settings” from the apps screen or the drop-down notification bar.



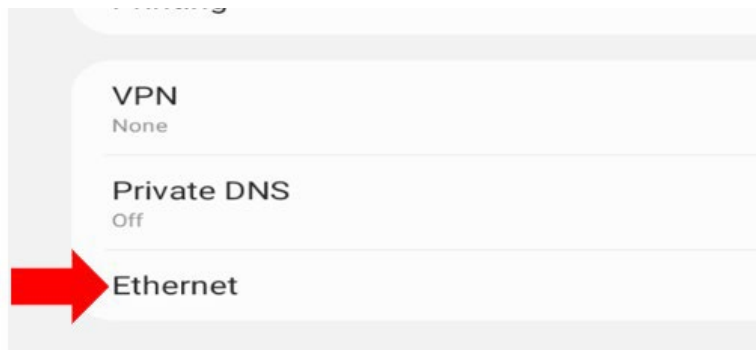
Step 2: Select “Connections” from the Settings menu.



Step 3: Select “More connection settings” from Connections menu.



Step 4: Select “Ethernet” from the More connection settings menu. Note: “Ethernet” will not be selectable if the ECI is not connected and powered on.



Step 5: Select “Configure Ethernet Device”.



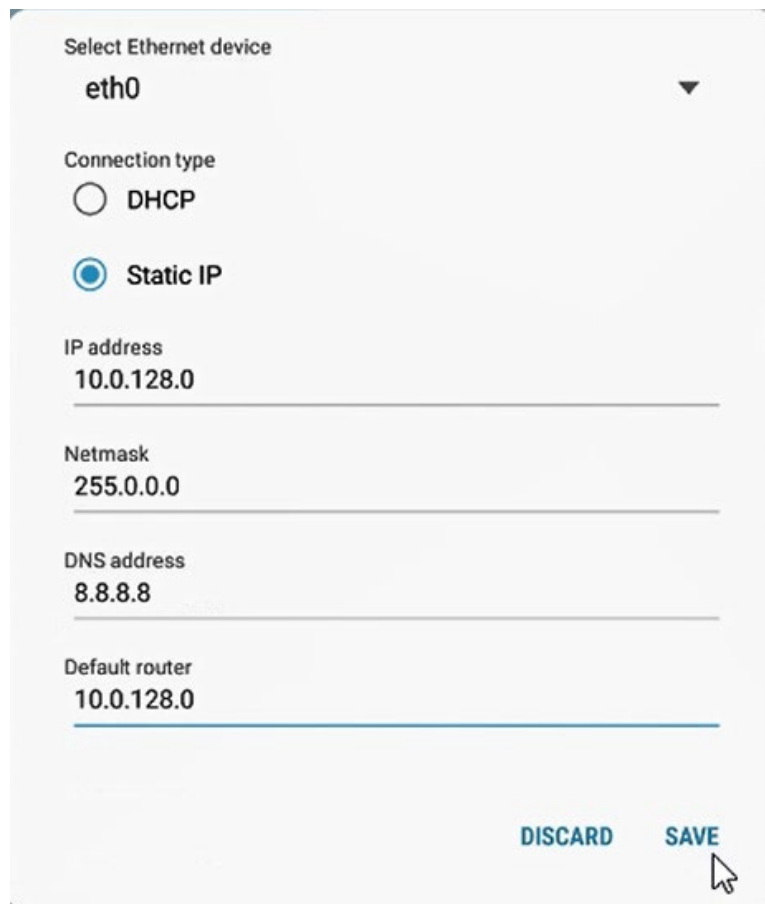
Step 6: Select "Static IP".



A screenshot of a network configuration dialog box. At the top, it says "Select Ethernet device" with "eth0" selected in a dropdown menu. Below that, "Connection type" has two radio buttons: "DHCP" (unselected) and "Static IP" (selected). Under "Static IP", there is a "Proxy" dropdown menu with "None" selected. At the bottom, there are two buttons: "Discard" and "Save".

Step 7: Enter the following digits exactly as shown for IP address, Netmask, DNS address, and Default gateway. Save and close.

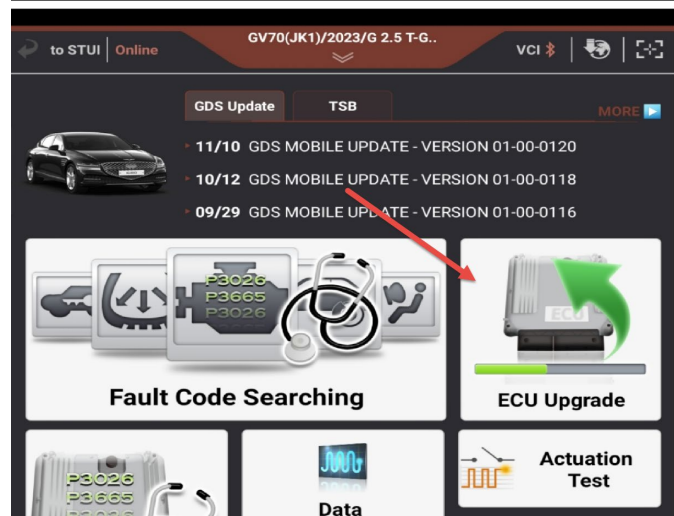
IP address – 10.0.128.0	Netmask – 255.0.0.0
DNS address – 8.8.8.8	Default gateway – 10.0.128.0



A screenshot of the same network configuration dialog box, but now with the following values entered in the input fields: "IP address" is 10.0.128.0, "Netmask" is 255.0.0.0, "DNS address" is 8.8.8.8, and "Default router" is 10.0.128.0. The "Static IP" radio button remains selected. The "DISCARD" and "SAVE" buttons are at the bottom right, with a mouse cursor pointing at the "SAVE" button.

2. AUTOMATIC UPGRADE PROCEDURE USING THE GDS-MOBILE

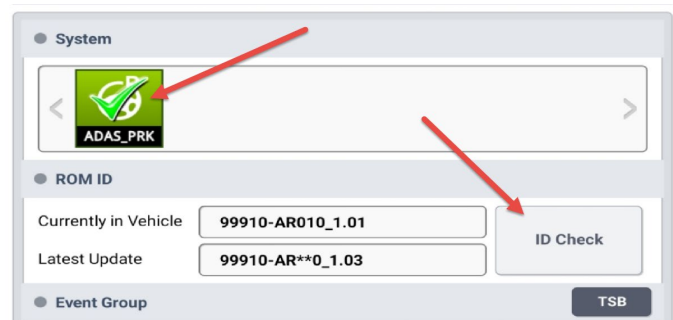
1. Select ECU Upgrade on the initial screen after entering the vehicle information.



2. Select Auto Mode and then tab the system.



3. Select "ADAS_PRK" System and Press "ID Check". The GDS-Mobile will read the current ROM ID in vehicle and check the newest upgrade event.

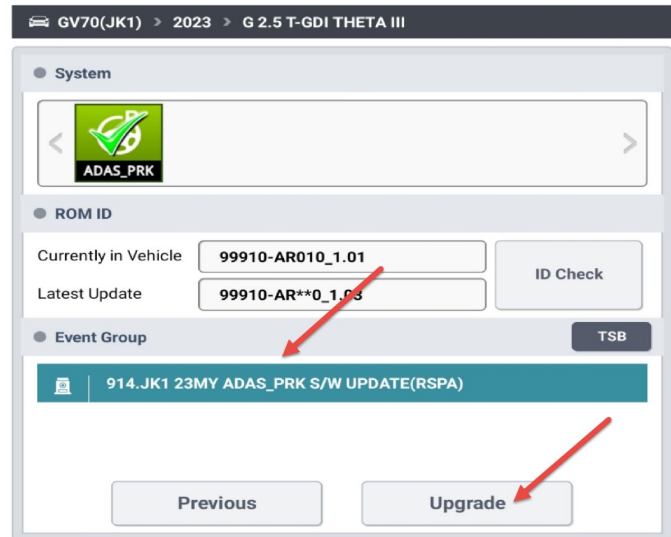


- Select the upgrade event.

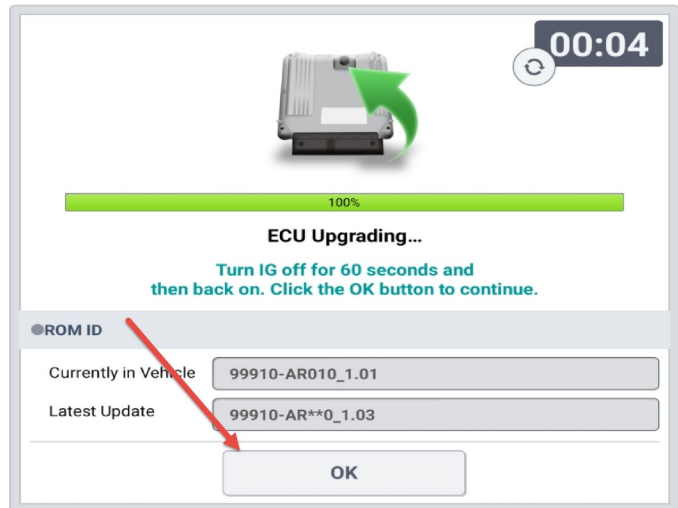
"914.JK1 23MY ADAS_PRK S/W UPDATE(RSPA)"

Press "Upgrade".

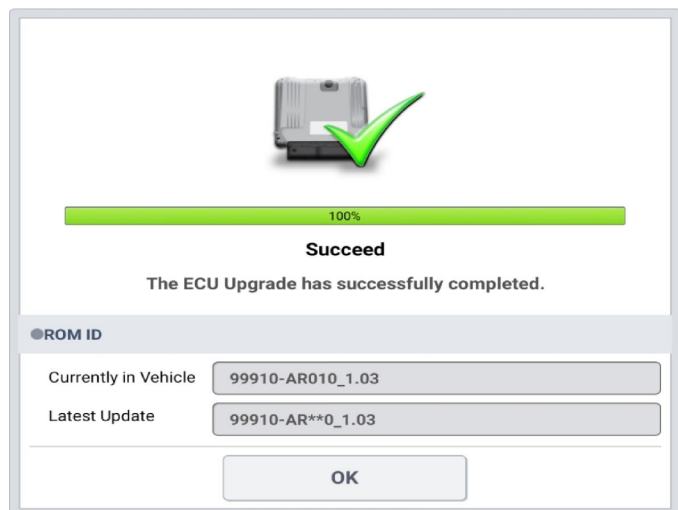
Upgrade will begin and the progress of the upgrade will appear until 100% is reached on the bar graph.



- When 100% is reached on the bar graph, turn the ignition key off for 60 seconds. Place it back to the key on position and then press OK to continue.

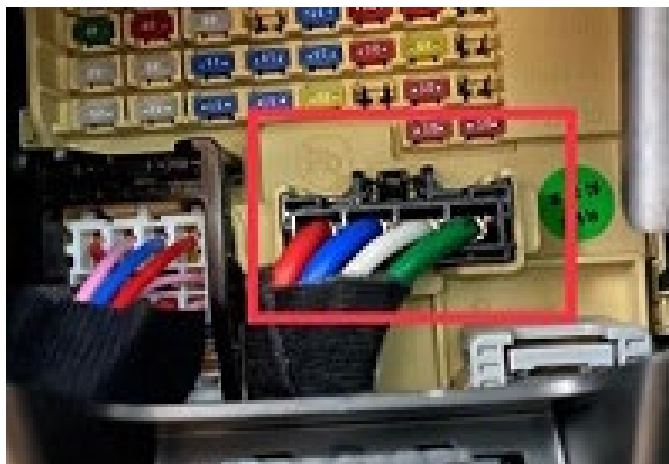


- Press OK on the final screen, which indicates upgrade is complete.



- After upgrade, remove power connector of indoor fuse box and reconnect it after 5 seconds.

Alternatively, remove the battery negative terminal and reconnect it 5 seconds later.



- Check if any incidental Diagnostic Trouble Codes (DTC) have been created by the upgrade and clear the DTC(s) present.

Start the engine to confirm proper operation of the vehicle.

Upgrade procedure is completed.

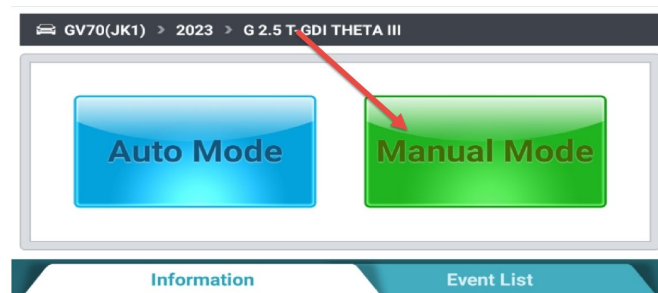


3. MANUAL UPGRADE PROCEDURE USING THE GDS-MOBILE

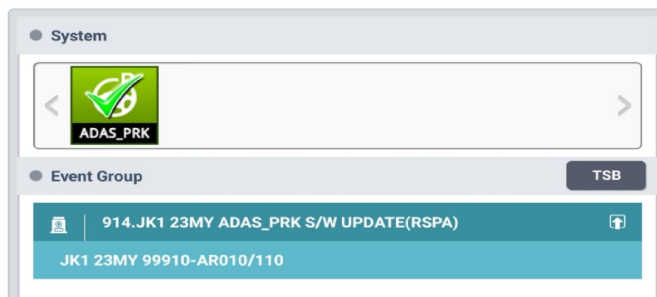
Note:

- The manual upgrade should be performed only when the automatic upgrade fails.
- If the automatic upgrade fails, remove the power connector in the indoor fuse box and reconnect after 1 minute and turn the key back ON.

- Within the upgrade screen, select Manual Mode, then select upgrade event.

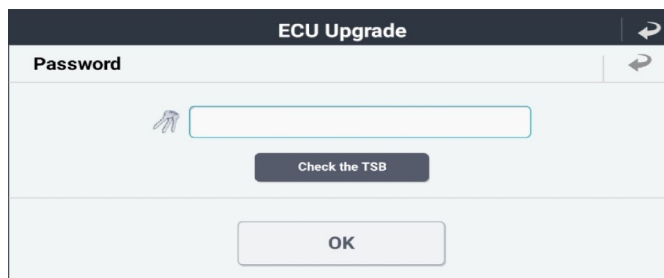


- Select the control unit part number with reference to the above ROM ID Information Table and press OK.

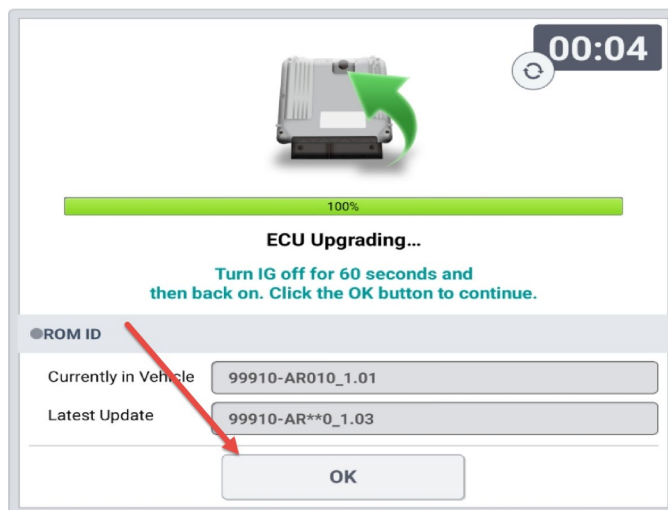


- Enter the password from the below table then press OK.

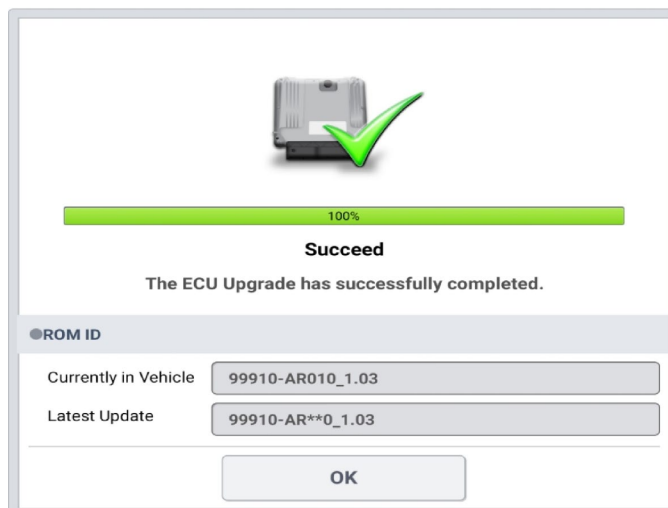
MENU	PASSWORD
JK1 23MY RSPA 99910-AR010/110	1010



- When 100% is reached on the bar graph, turn the ignition key off for 60 seconds. Place it back to the key on position and then press OK to continue.

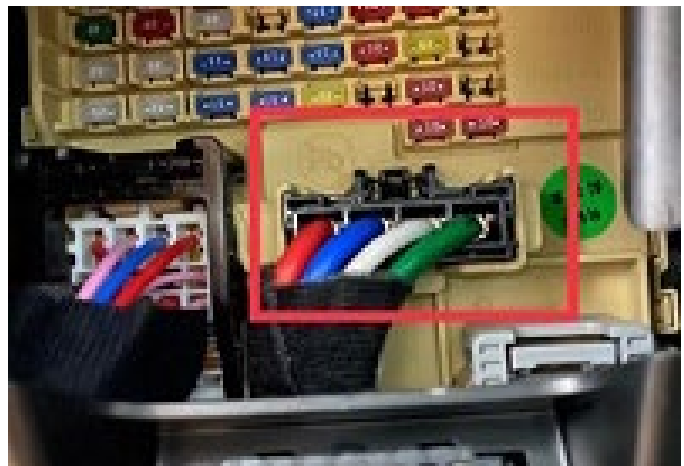


- Press OK on the final screen, which indicates upgrade is complete.



6. After upgrade, remove power connector of indoor fuse box and reconnect it after 5 seconds.

Alternatively, remove the battery negative terminal and reconnect it 5 seconds later.



7. Check if any incidental Diagnostic Trouble Codes (DTC) have been created by the upgrade and clear the DTC(s) present.

Start the engine to confirm proper operation of the vehicle.

Upgrade procedure is completed.

