



# Start-Up Procedure

<b>Bulletin Type:</b>	INC	<b>Publication Date:</b>	February 2023
<b>Bulletin No:</b>	23-087	<b>Make(s):</b>	Entegra Coach
<b>Model Year (s):</b>	2023-2024	<b>Model(s):</b>	Reatta, Reatta XL

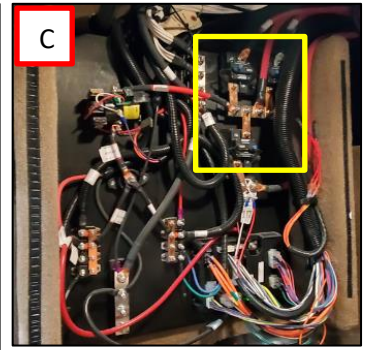
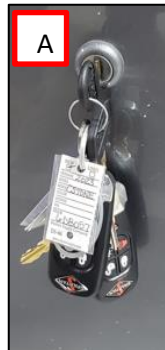
<b>Incident:</b>	Understanding the start-up procedure
<b>Affected Units:</b>	2023-2024 Entegra Coach Reatta & Reatta XL

# Start-up Procedure Instructions

**At the time of pick up, the delivery driver should use the following start-up procedure:**

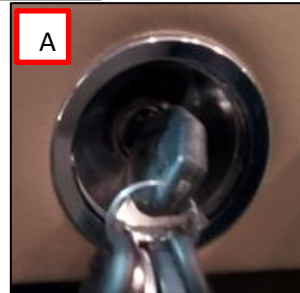
**1. Turning on the disconnect switches:**

- A. Use the round Trimark key to unlock the baggage doors to access the disconnect switches.
- B. Turn on the (2) Chassis Battery Disconnect Switches in the rear battery compartment.
- C. Turn on the (3) House Battery Disconnect Switches in the passenger mid storage compartment behind access panel. (Red Box in figure C)
- D. Turn on the Main Disconnect Switch inside the unit mounted on passenger lower panel.



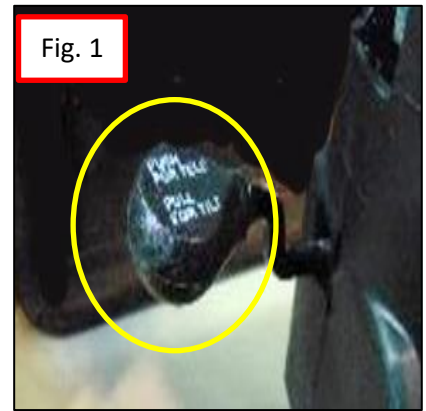
**2. Starting the unit:**

- A. Place ignition key into ignition and rotate to auxiliary mode.
- B. Apply foot to brake
- C. The vehicle's grid heater must heat up before starting the vehicle. Wait for the Malfunction Indicator Lamp and the Wait to Start Indicator Lamp to go out before starting.
- D. Turn the ignition key to start.



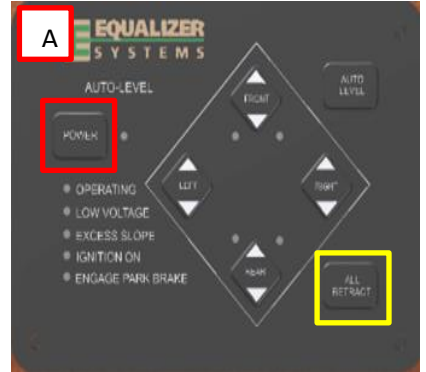
**3. Adjust Pedals and Steering Column:**

- A. Pedal Retract/Extend: The pedal Retract/Extend is located on the driver's side console controls and operated using a rocker switch. (Figure 1)
- B. Steering Wheel Tilt/Telescope: The steering column can be adjusted by using the manual lever located on the left side of the steering column. To adjust the tilt and telescope of the column, push the pedal down, move to the desired location, then release the pedal. (Figure 1)



**4. Retracting the Jacks:**

- A. Push and release the Power Keypad button to engage power. (Red Box on figure A)
- B. Press the all Retract (Yellow Box on figure A) button to retract the jacks prior to travel.
  - i. NOTE: The All Retract button must be pressed to ensure the system is ready/safe for travel. All jacks should automatically retract and return to stowed position when the ALL RETRACT button is pressed and released.

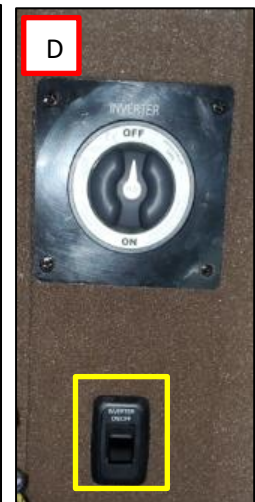
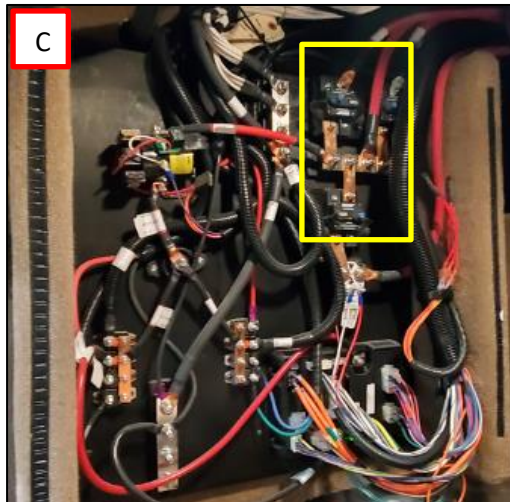


- 5. Any time a vehicle is parked for any length of storage time, all the disconnect switches from step #1 should be turned off.

**After delivery, the Dealer should use the following start-up procedure:**

**1. Turning on the disconnect switches:**

- A. Use the round Trimark key to unlock the baggage doors to access the disconnect switches.
- B. Turn on the (2) Chassis Battery Disconnect Switches in the rear battery compartment.
- C. Turn on the (3) House Battery Disconnect Switches in the passenger mid storage compartment behind access panel. (Yellow Box in C)
- D. Turn the Rotary Disconnect to the ON position
- E. Initiate the inverter by pressing the Inverter Toggle Switch (Yellow Box in D)
- F. Turn on the Main Disconnect Switch inside the unit mounted on passenger lower panel.



**2. Power Shore Connection:**

- A. Firefly Vegatouch Home Screen, press the Electrical icon. (Yellow circle in figure A)
- B. At the Electrical Screen, tap the Inverter icon to enable the inverter. (Yellow box in figure B)
- C. Tap the Charger Icon to enable the charger. (Yellow box in figure C)
- D. Plug in the Power Shore Cord
- E. The Inverter icon should change to pass through and Charger icon should change to Bulk on the Firefly Vegatouch Screen,
  - a. **NOTE:** If the operation sequence is not followed, the inverter AC Out will not have voltage. Verify the system connected correctly by reviewing.



Jayco's sole obligation under our limited warranty is to repair or replace defective materials and/or workmanship deemed our responsibility as determined by Jayco in our sole discretion. Jayco reserves the right to use new and/or remanufactured parts or materials of similar quality to complete any work, and to make parts and/or design changes as appropriate without notice to anyone. Jayco designs and/or materials changes are done without obligation to incorporate such changes in previously manufactured product. Jayco makes every reasonable effort to ensure field remedies will not adversely affect performance and/or safety of the unit. This field remedy is not intended to extend to future performance of this RV, or any of its materials, components or parts beyond the standard warranty period. The RV owner's obligation to notify Jayco, or one of its independent, authorized dealers, of a claimed defect does not modify any obligation placed on the RV owner to contact Jayco directly when attempting to pursue remedies under state or federal law.

03 South Main Street • P.O. Box 460 • Middlebury, IN 46540