

NUMBER: 08-016-23

GROUP: 08 - Electrical

DATE: January 24, 2023

This bulletin is supplied as technical information only and is not an authorization for repair. No part of this publication may be reproduced, stored in a retrieval system, or transmitted, in any form or by any means, electronic, mechanical, photocopying, or otherwise, without written permission of FCA US LLC.

SUBJECT:

Updated Front Turn Signal or Park Lamp Bulb

OVERVIEW:

This bulletin is to inform the technician both the socket and bulb will need to be replaced with updated components if front park/turn signal bulb is inoperative.

MODELS:

2014 - 2020

(WD)

Dodge Durango

NOTE: This bulletin applies to vehicles within the following markets/countries: North America.

DISCUSSION:

If arcing across the electrical socket or a burn contact on the bulb is found, the socket and bulb (Fig. 1) must be replaced with updated current parts.

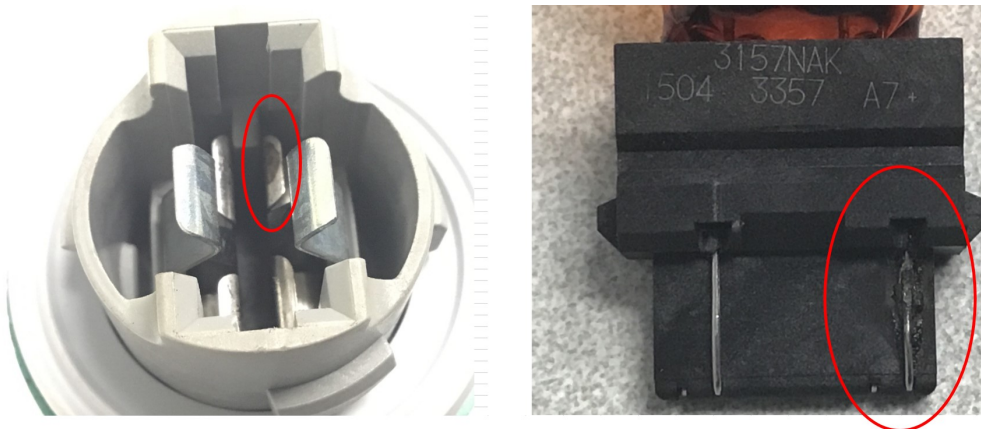


Fig. 1

Arcing Socket and Burned Connection on the Bulb

The updated electrical socket (Mopar # 68333194AB) must be used when doing repair. Any bulb being replaced must be replaced with the following Mopar parts supersessions depending on where the bulb is located on the front of the vehicle:

- Mopar # L00003157A
- Mopar # L0003157AK
- Mopar # L0003757AK
- Mopar # L0007444NA

POLICY:

Information Only