



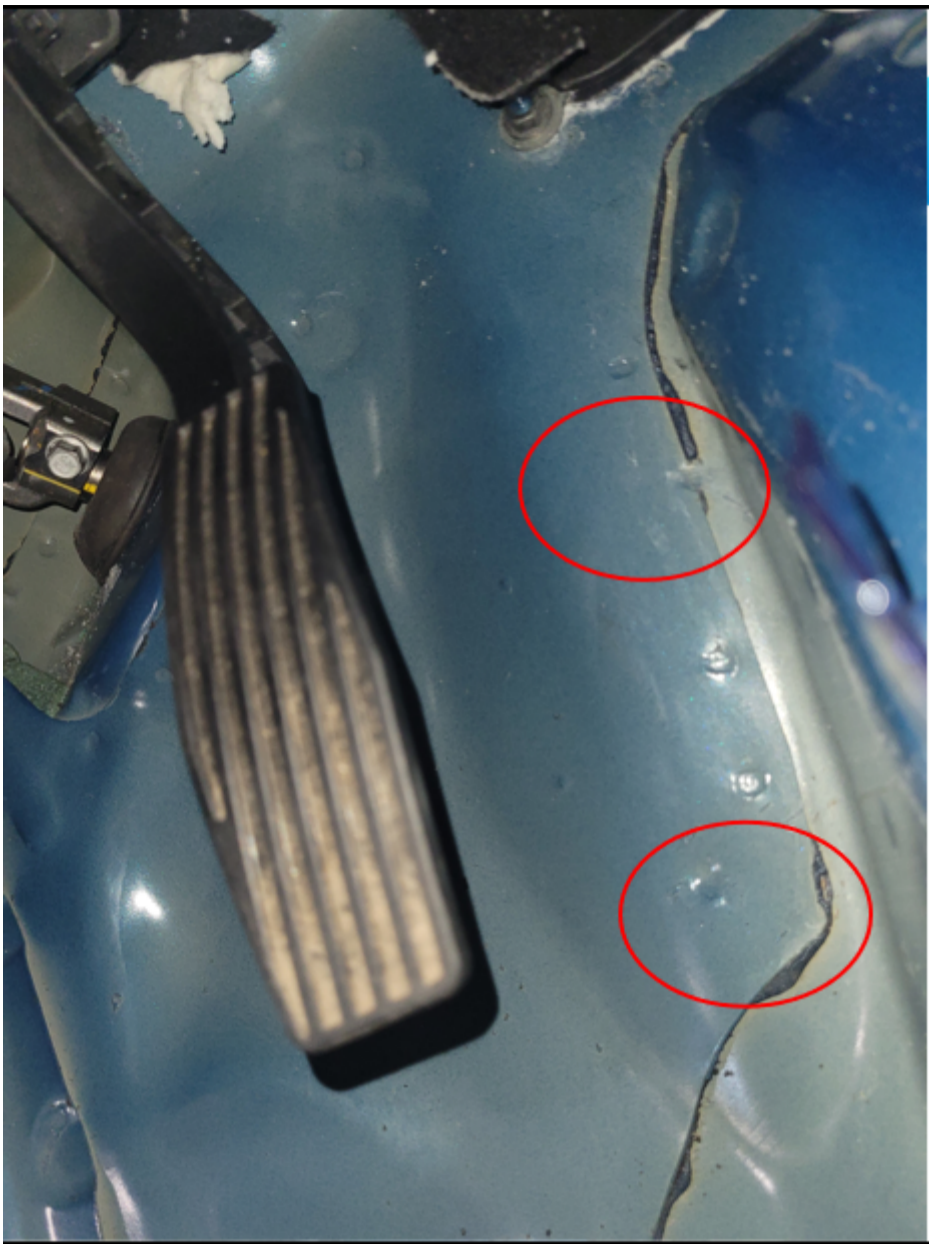
Preliminary Information

PIC6487 Popping Noise When Going Over Bumps or Turning Maneuvers When Parking

Models

Brand:	Model:	Model Years:	VIN:		Engine:	Transmissions:
			from	to		
Chevrolet	Trax Models	2019	All	All	All	All

Involved Region or Country	North America
Additional Options (RPO)	For vehicles only built in Mexico VIN begins with '3'
Condition	Customer states they have a popping noise when going over bumps or when making turning maneuvers into a park space or driveway.
Cause	Body panel popping due to missing, incomplete, mispositioned spot welds in panel at driver's foot well where the firewall and floor panels welded together.



Correction:

If the source of the noise has been isolated to the driver footwell area, the dealer will need to inspect for missing, incomplete or mislocated spot welds (see image below for location of spot welds).

To inspect the footwell area for proper spot welds; the dealer will need to remove the driver seat and front carpet.

Then they will need to cut the jute matting along the top edge of the transmission tunnel.

This will allow the jute matting to be tucked under the brake pedal while inspection or repairs are being performed (see image below).

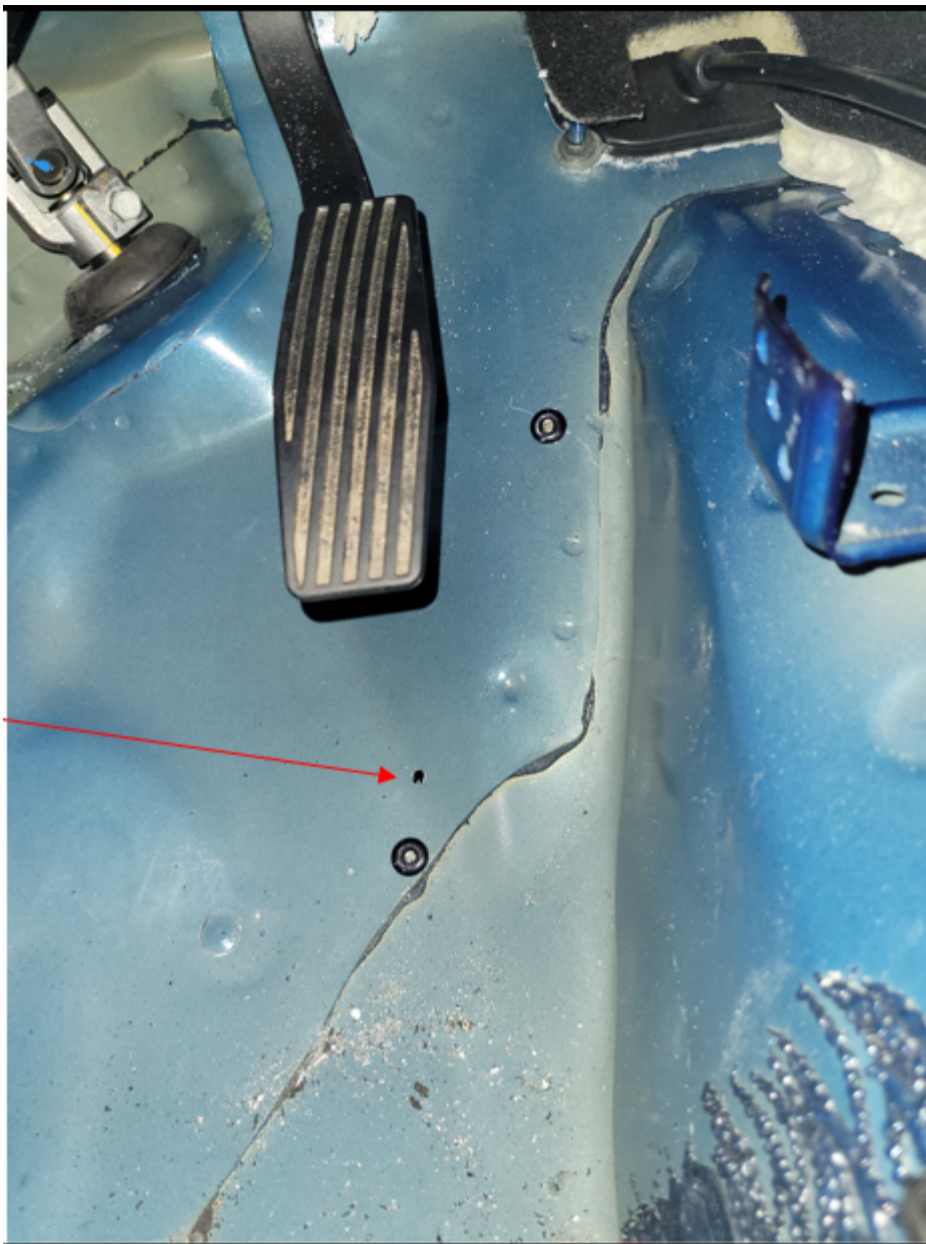
If no missing, incomplete or mislocated spot welds are found please refer to SI for further diagnostics.



If missing, incomplete or mislocated spot welds are found, dealers will need to install pop rivets in their place.

Pop rivets should be installed within 1" of the edge of the panel (see image below).

Dealers will need to drill through both layers of sheet metal when preparing hole for the rivet.



Once rivets have been install, the dealer will need to reposition the jute mating and mend the cut line using the approved tape (see image below) and install the drivers seat and carpet.



Parts Information

Description	Part Number	Quantity
Rivet	19353808	As needed
Nashua Premium Grade Duct Tape: 3 in. x 60 yds	* 357 (Black)	1 Roll
*Procure Online Or Locally, 1 roll services 100+ vehicles	N/A	N/A

Warranty Information

For vehicles repaired under the Bumper-to-Bumper coverage (Canada Base Warranty coverage), use the following labor operation. Reference the Applicable Warranties section of Investigate Vehicle History (IVH) for coverage information

Labor Operation	Description	Labor Time
1488568	Inspect for Missing, Incomplete or Mislocated Spot Welds	0.7 hr
Add	Install Pop Rivets	1.0 hr

*This is a unique Labor Operation for Bulletin use only.

Version History

Version	1
Modified	01/23/2023 - Created.



© 2023 General Motors. All Rights Reserved.