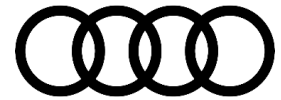


Technical Service Bulletin



70 Noises from door trim panel(s)

70 23 80 2064546/4 February 6, 2023. Supersedes Technical Service Bulletin Group 70 number 23-79 dated January 17, 2023, for reasons listed below.

Model(s)	Year	VIN Range	Vehicle-Specific Equipment
e-tron GT, and RS e-tron GT	2022 – 2023	All	Not Applicable

Condition

REVISION HISTORY		
Revision	Date	Purpose
4	-	Revised <i>Required Parts and Tools</i> (Change Quantity)
3	01/17/2023	Revised <i>Required Parts and Tools</i> (Change Quantity)
2	12/14/2022	Revised title (Change Title) Revised header (Add Model Year) Revised <i>Condition</i> (Modify Customer Statement) Revised <i>Technical Background</i> (Modify Technical Background) Revised <i>Production Solution</i> (Remove Solution) Revised <i>Service</i> (Add Corrective Measures) Revised <i>Warranty</i> (Change Service Number, Add Labor Operations) Revised <i>Required Parts and Tools</i> (Add Parts)

Customer states:

- Squeak or rattle noises from the door trim panel(s) during music operation or driving on rough roads.

Workshop findings:

One or more of the following areas have been identified as root causes:

- Midrange speaker trim.
- Upper door trim panel mounting strip.
- Trim panel clips and body mounting points.
- Pull handle to armrest joint.
- Door wire harness and/or part labels.



- Rear and lower edges of door trim panel.
- Door trim panel light assembly.
- Power rear lid switch.
- Door trim panel storage pocket light assembly.

Technical Background

Relative movement between components due to tolerances.

Production Solution

Not applicable.

Service



Tip: There are several different possible root causes for the squeak and rattle noises originating from the door trim panel(s). Check if the following corrective measures apply and only perform the measure(s) relevant to the door trim panel in question.

The following materials are needed for repair:

- **533867910A** (Felt strip/tape)
- **D373125A2** (Fleece adhesive tape)
- **G052172A1** (Special lubricant)

Midrange speaker trim:

- Remove the midrange speaker trim. Using felt tape (533867910A), apply a section to the lower part of the opening for the trim in the door panel.
- Ensure that this section of felt will not be visible when the speaker trim is reinstalled (Figure 1).

All of the tabs on the speaker trim that engage the opening in the door panel will need to have felt tape applied to each of them (Figure 2).



Figure 1. Felt strip section applied to opening in door panel.



Figure 2. All tabs on the midrange speaker trim that require felt tape.

Upper door trim panel mounting strip:

- Bond fleece tape (D373125A2) into mounting strip. To do so, position fleece tape at edge of fastening strip and fold it over towards inside. Then press it on across entire surface (Figures 3-5).



Figure 3. Apply fleece tape to the trim panel mounting strip.



Figure 4. Fleece tape applied to mounting strip.

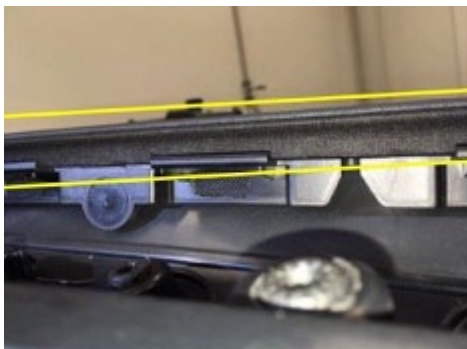


Figure 5. Fleece tape bonded to mounting strip.



Trim panel clips and body mounting points:

- Apply fleece tape (D373125A2) to door trim panel clips and to body mounting points to reduce play (Figures 6-7).



Figure 6. Door clip with fleece tape applied.

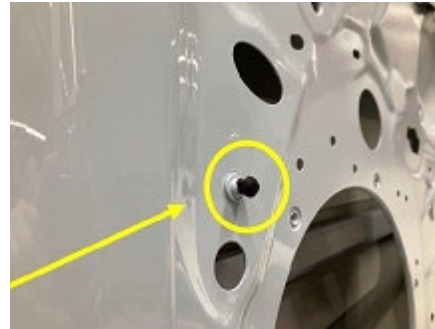


Figure 7. Door mounting point with fleece tape applied.

Pull handle to armrest joint:

- Isolate the door trim panel pull handle from the armrest by applying fleece tape (D373125A2) or special lubricant (G052172A1) in the areas of contact (Figures 8-9).



Figure 8. Isolate pull handle from armrest.

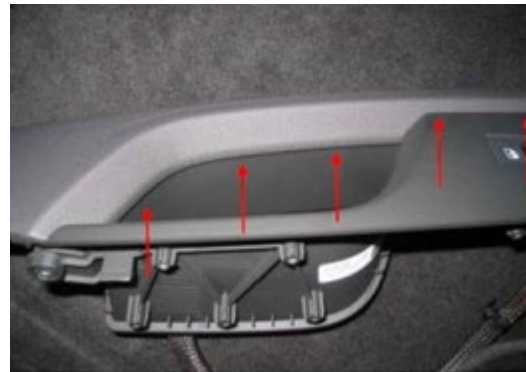


Figure 9. Apply fleece tape or special lubricant to isolate pull handle from armrest.

Door wire harness and/or part labels:

- Secure the door wire harness and/or part labels by repositioning them and/or applying fleece tape (D373125A2) (Figures 10-13).

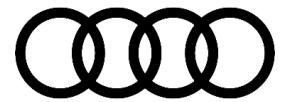


Figure 10. Repositioned part label.



Figure 11. Wire harness contacting door trim panel.



Figure 12. Wire harness not secured properly.



Figure 13. Wire harness contacting body.

Rear and lower edges of door trim panel:

- Apply felt tape (533867910A) to edge of door trim panel or on the existing piping strip in area of close contact. (Figures 14-15).



Figure 14: Apply felt tape to edge of trim panel.



Figure 15. Felt tape installed on trim panel.



Door trim panel light assembly:

- Wrap cable for door trim panel light assembly with fleece tape (D373125A2) as far as to the connector. Also apply fleece tape to light assembly to reduce play in mounting (Figures 16-18).



Figure 16. Apply fleece tape to trim panel light and wiring.



Figure 17. Wrapping light wire harness with fleece tape.



Figure 18. Fleece tape applied to light assembly.

Power rear lid switch:

- Carefully bend open retaining tab of power rear lid switch for a more secure fit (Figures 19-20).



Figure 19. Bend retaining tab of power rear lid switch.

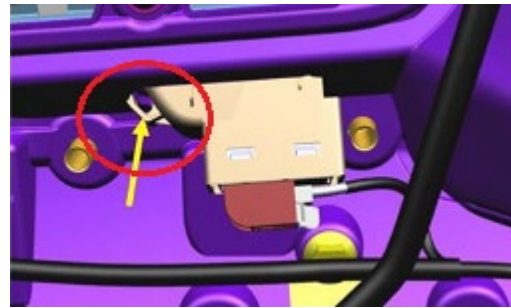


Figure 20. Bend open retaining tab of lid switch.

Door trim panel storage pocket light assembly:

- Apply fleece tape (D373125A2) to the retaining tabs of the diffuser of the door pocket lighting (Figures 21-22).



Figure 21. Apply fleece tape to pocket lighting.

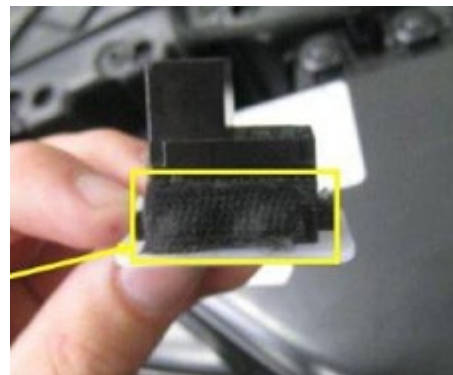
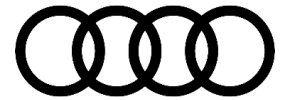


Figure 22. Fleece tape applied to diffuser tabs.

Warranty

Claim Type:	<ul style="list-style-type: none"> • 110 up to 6 Months/6,000 Miles. • 1 AM over 6 Months/6,000 Miles. • If the vehicle is outside any warranty, this Technical Service Bulletin is informational only.
Service Number:	7059

Technical Service Bulletin

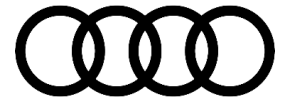


Damage Code:	0020		
Labor Operations:	Modify midrange speaker trim – One side	7014 4999	20 TU
	Modify midrange speaker trim – Both sides	7014 5099	30 TU
	And/Or		
	Modify door trim panel – One side	7059 4999	60 TU
	Modify door trim panel – Two sides	7059 5099	110 TU
	And/Or		
	Modify pull handle – One side	7063 4999	30 TU
	Modify pull handle – Both sides	7063 5099	50 TU
Diagnostic Time:	GFF	No allowance	0 TU
	Road test prior to the service procedure	No allowance	0 TU
	Road test after the service procedure	No allowance	0 TU
Claim Comment:	As per TSB 2064546/4		

All warranty claims submitted for payment must be in accordance with the *Audi Warranty Policies and Procedures Manual*. Claims are subject to review or audit by Audi Warranty.

Required Parts and Tools

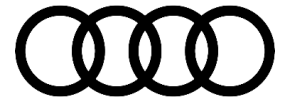
Always check with your Parts Department and/or ETKA for the latest information and parts bulletins.		
Part Number	Part Description	Quantity




533867910A		1 or 2
D 373125A2		0.1 or 0.2

Self-adhesive felt strip

Fleece adhesive tape



G 052172A1		0.1
See ETKA	Special lubricant	See ETKA/ELSA
	Fasteners, Bolts, Nuts, and Screws as needed per the Repair Manual	

Additional Information

All parts and service references provided in this TSB (2064546) are subject to change and/or removal. ©2023 Audi of America, Inc. All rights reserved. The information contained in this document is based on the latest information available at the time of printing and is subject to the copyright and other intellectual property rights of Audi of America, Inc., its affiliated companies, and its licensors. All rights are reserved to make changes at any time without notice. No part of this document may be reproduced, stored in a retrieval system, or transmitted in any form or by any means, electronic, mechanical, photocopying, recording, or otherwise, nor may these materials be modified or reposted to other sites, without the prior expressed written permission of the publisher.