



TECH TIP

**DX3 CONNECTION TO A CUMMINS
EQUIPPED CONVENTIONAL HINO
TRUCK**

**GROUP: 0-GENERAL
TECH TIP NO: TT-23-009
DATE: 1-16-23**

SUBJECT VEHICLES: 22MY and newer Conventional trucks equipped with a Cummins Engine

Note: This tech tip is provided as technical information and is not authorization for a warrantable repair.

OVERVIEW:

When connecting DX3 to a Cummins equipped Hino, DX3 is not able to read the Cummins engine ECU, therefore the user will be required to complete truck classification with each DX3 connection. Follow the ***Informational Procedure*** on the next page to complete DX3 connection on a Cummins equipped Conventional Hino truck.

Important:

For engine ECU diagnosis, Cummins INSITE is required, contact Cummins to purchase INSITE.

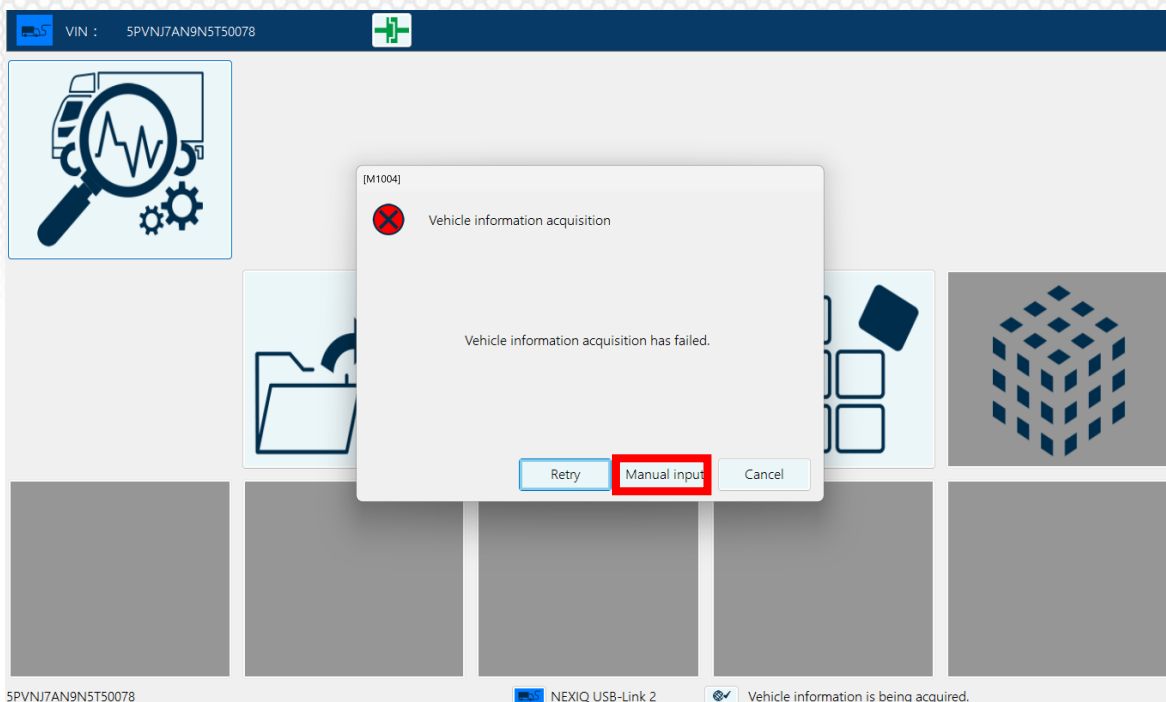


INFORMATIONAL PROCEDURE:

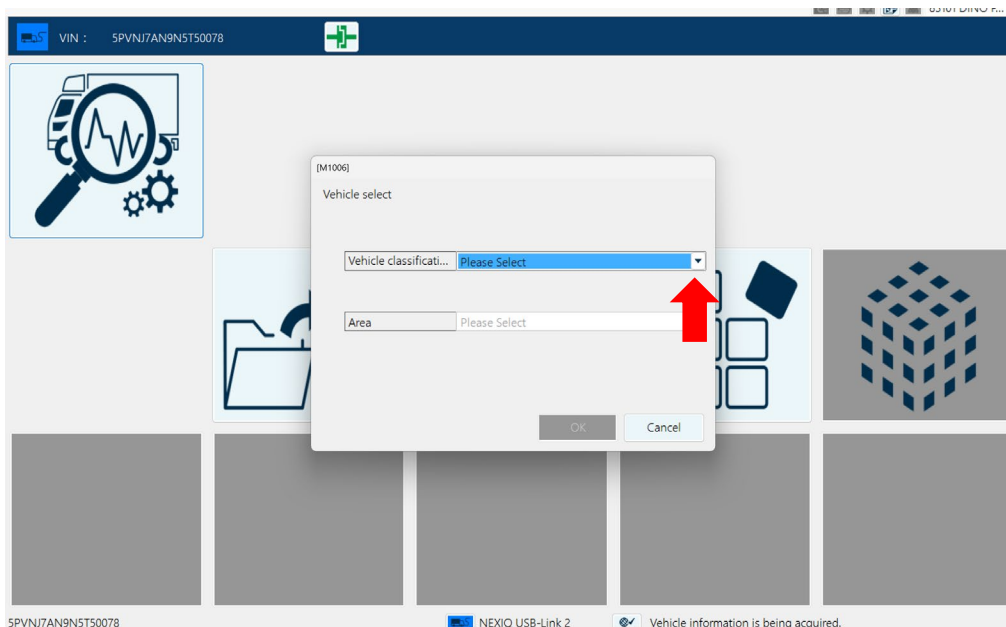
- See step 1 on the next page



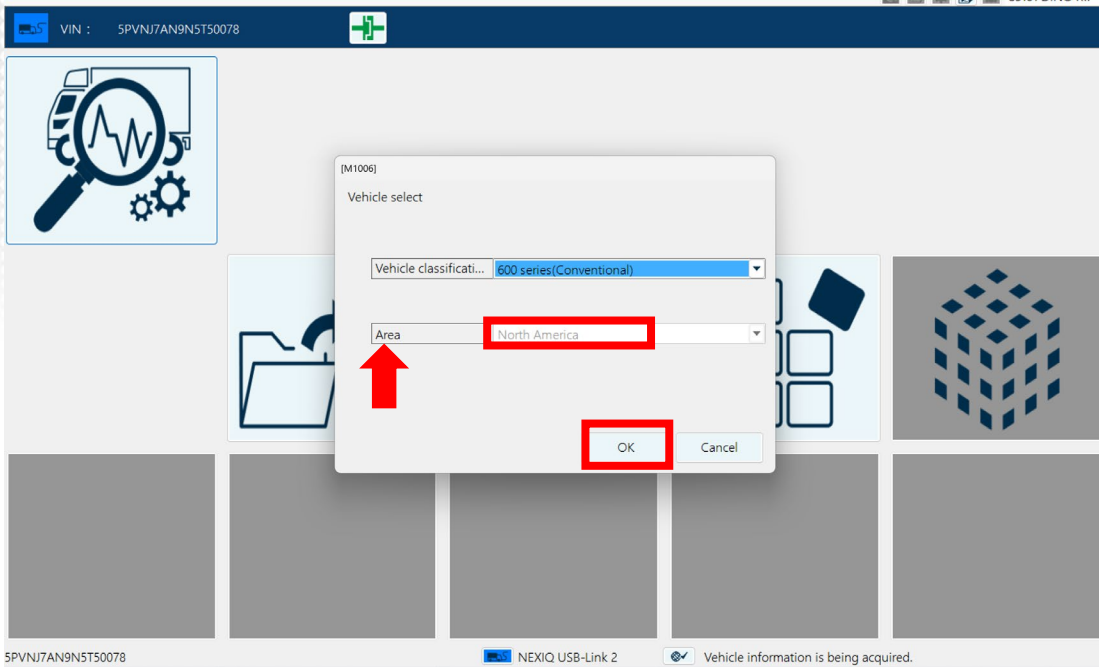
1. Connect to the truck using DX3, when the screen below is displayed, select **Manual Input**.



2. Click on the Vehicle Classification dropdown and select **600 Series (Conventional)**.



3. Once selected, area dropdown will default to **North America**, Click **OK**.



4. Allow DX3 to read out all modules and perform diagnosis needed.

