



TECH TIP

DX3 BURNER CONTROL UNIT (BCU) PROGRAMMING

GROUP: 0-GENERAL

TECH TIP NO: TT-23-008

DATE: 1-17-2023

SUBJECT VEHICLES

11MY-14MY Conventional Trucks equipped with a J08 engine and burner style exhaust system.

OVERVIEW:

The purpose of this procedure is to provide instructions in performing BCU programming with DX3 on 2011 through 2014 Conventional trucks equipped with burner style exhaust system.

Note: This technical tip is provided as technical information and is not authorization for a warrantable repair.

REPAIR PROCEDURE:

Note: Be sure to change Unit Settings in DX3. Click **Settings** (gear in the upper right) > **Unit Setting** and then mirror the settings below, click **OK**. Log out of DX3, then log back in to hold new settings for future DX3 connections and data monitoring.

[B1014]

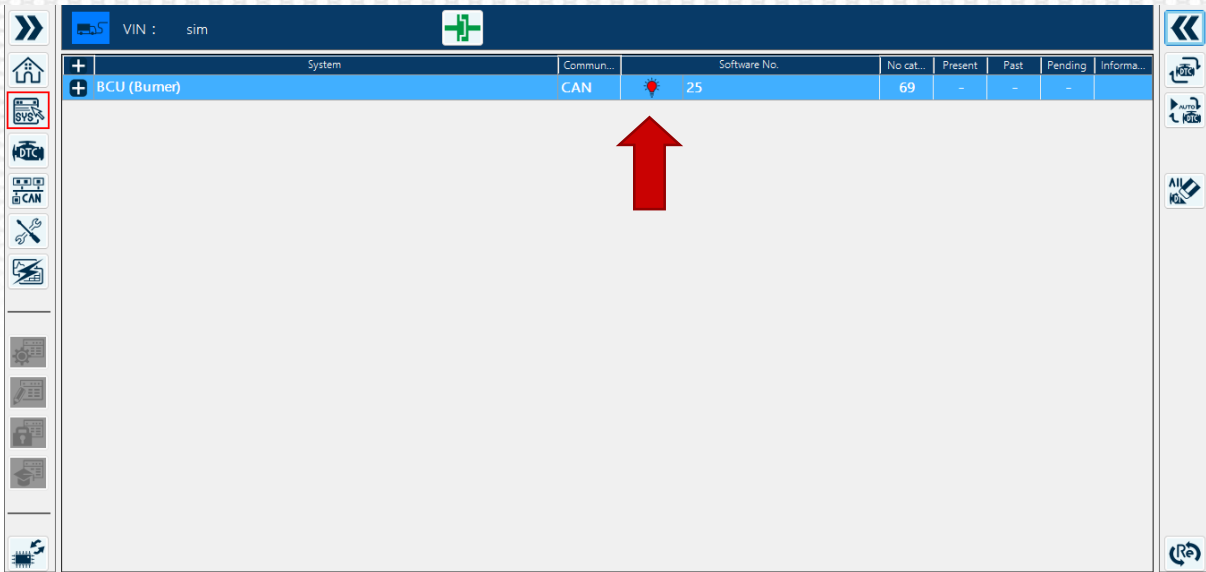
Unit Setting

Distance	Mile(mile)	▼
Speed	Mile per hour(mph)	▼
Acceleration	Mph/sec(mph/sec)	▼
Capacity	US Gallon(gal)	▼
Fuel consumption rate	Mile per US Gallon(mpg)	▼
Fuel consumption rat...	Mileage per Liter(km/L)	▼
Temperature	Fahrenheit(° F)	▼
Horsepower	Horsepower(hp)	▼
Torque	Foot pounds (lb-ft)	▼
Pressure	Pound per Square Inch(PSI)	▼
Pressure (Mp)	Pound per Square Inch(PSI)	▼

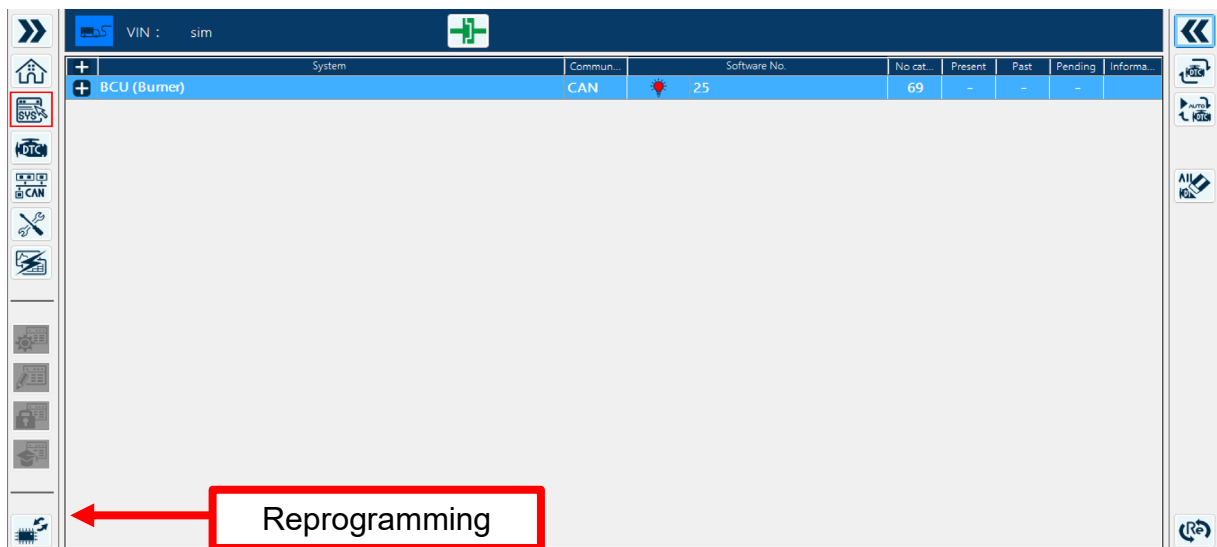
OK Cancel



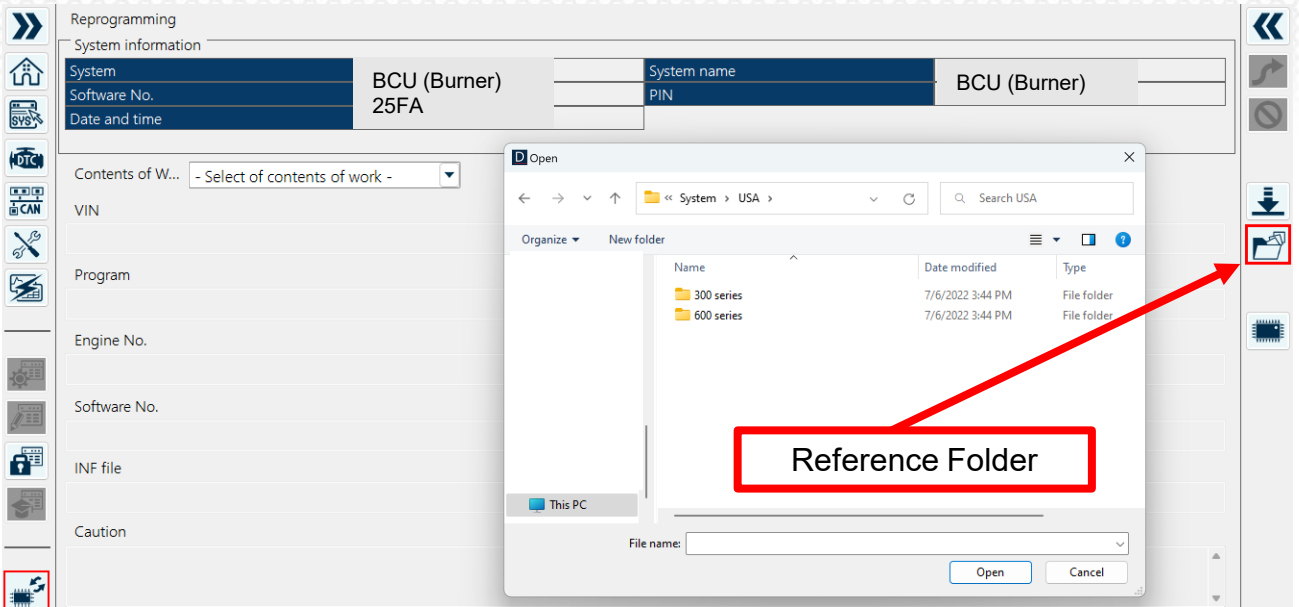
1. Perform read out of all modules. Next to the module, verify BCU software to confirm there is an update needed.



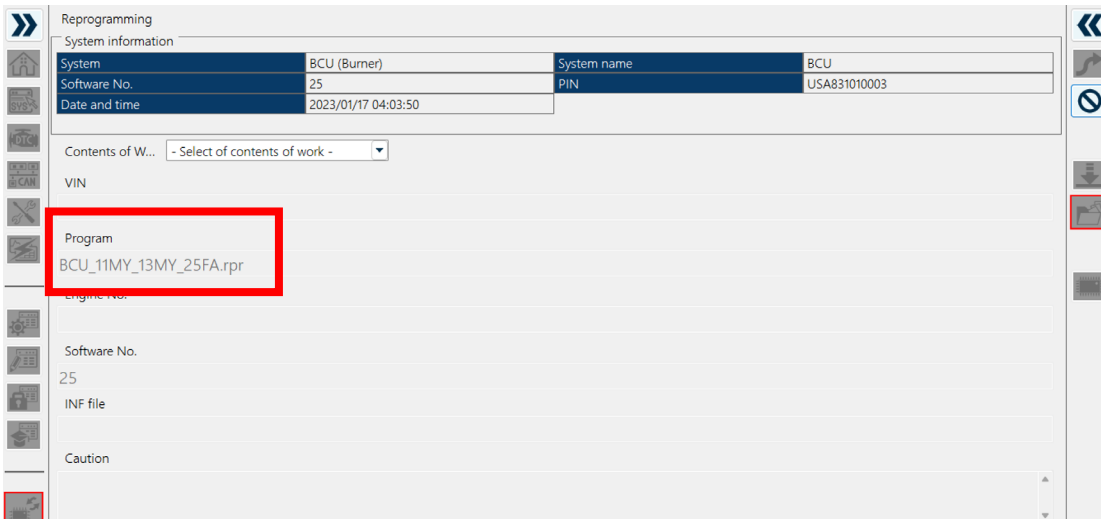
2. Select *Reprogramming* in the lower left.



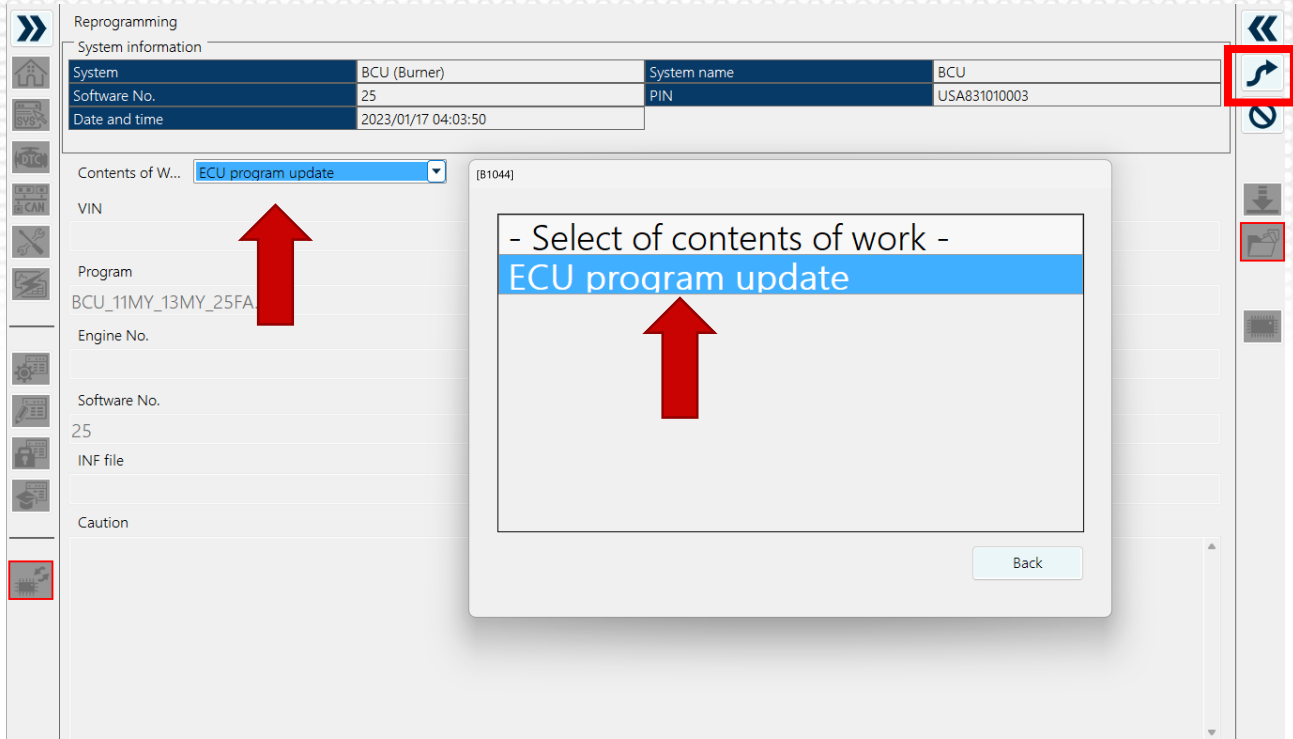
3. Select **Reference** folder on the right side of the screen and navigate to the following folder; **(C:) drive > HinoServiceApplications > HinoDX3 > HinoDX3 > Reprodata > System > USA > 600 Series > BCU** and then select the correct file based on model year truck that needs to be programmed.



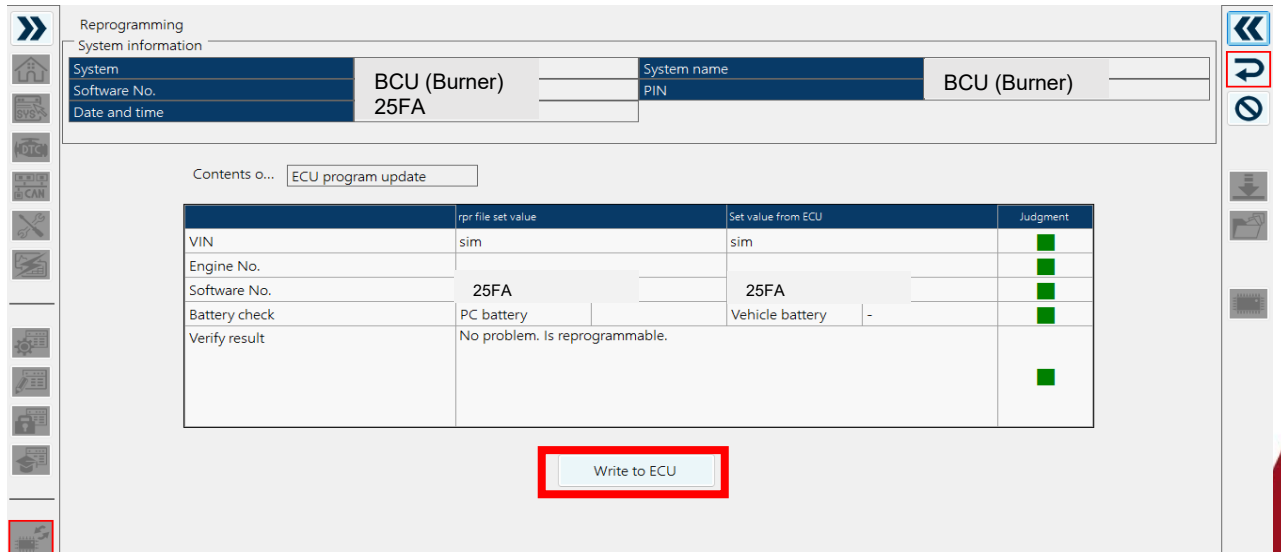
4. Verify the correct software was selected.



5. Select **Contents of Work** then **ECU Program Update** and then **Next** in the upper right corner.



6. Verify judgments and click **Write to ECU**.



7. Follow screen prompts through programming as offered. Once programming has completed, verify **Before Work software** and **After Work software** to ensure software has been updated, then click **OK**.

The screenshot displays a software interface for vehicle reprogramming. A central dialog box titled "Reprogramming result view" is shown, comparing data before and after the process. The "Before work" section lists VIN: sim, Engine No.: J08EVB88888, and a code: 25FA. The "After work" section lists VIN: sim, Engine No.: (blank), and a code: 25FA. A blue arrow points from the "Before work" section to the "After work" section. Below the comparison, a message reads: "ECU reprogramming completed. Check and delete any DTC's for all ECU's connected to the vehicle." At the bottom of the dialog, there are "Print" and "OK" buttons. The background interface shows system information for "BCU (Burner)" and a sidebar with various icons.