



Technical Service Bulletin

SUBJECT:		No.: TSB-23-33-001	
CORRECTION AND ADDITION OF FRONT AND REAR SUSPENSION INSPECTION PROCEDURES - SERVICE MANUAL REVISION		DATE: January 2023	
		MODEL: See below	
CIRCULATE TO:	<input type="checkbox"/> GENERAL MANAGER	<input checked="" type="checkbox"/> PARTS MANAGER	<input checked="" type="checkbox"/> TECHNICIAN
<input checked="" type="checkbox"/> SERVICE ADVISOR	<input checked="" type="checkbox"/> SERVICE MANAGER	<input checked="" type="checkbox"/> WARRANTY PROCESSOR	<input type="checkbox"/> SALES MANAGER

PURPOSE

This TSB provides corrections and additional information for the Front and Rear Suspension inspection procedures.

AFFECTED VEHICLES

- 2014-2015 and 2017-2022 Mirage
- 2017-2022 Mirage G4
- 2014-2020 Outlander
- 2018-2021 Outlander PHEV
- 2011-2022 Outlander Sport
- 2018-2020 and 2022 Eclipse Cross

AFFECTED SERVICE MANUAL

- 2014-2015 and 2017-2022 Mirage Service Manual, Group 33/34-Front/Rear Suspension
- 2017-2022 Mirage G4 Service Manual, Group 33/34-Front/Rear Suspension
- 2014-2020 Outlander Service Manual, Group 33/34-Front/Rear Suspension
- 2018-2021 Outlander PHEV Service Manual, Group 33/34-Front/Rear Suspension
- 2011-2022 Outlander Sport Service Manual, Group 33/34-Front/Rear Suspension
- 2018-2020 and 2022 Eclipse Cross Service Manual, Group 33/34-Front/Rear Suspension

PROCEDURE

Please use the attached chart on the following pages and replace the indicated pages in the affected Service Manuals, Group 33 Front Suspension and 34 Rear Suspension.



Copyright 2023, Mitsubishi Motors North America, Inc.

The information contained in this bulletin is subject to change. For the latest version of this document, go to the Mitsubishi Dealer Link, MEDIC, or the Mitsubishi Service Information website (www.mitsubishitechinfo.com).
--

MIRAGE

Applicable manual	Pub. No.	Applicable title (INFO-ID/SIE No.)	Content
2014 MIRAGE Service Manual	MSCD-016B-2014	Added below "LOWER ARM BALL JOINT DUST COVER CHECK" (M332-00-861-12001-01)	Attached sheet 2
		STRUT ASSEMBLY REMOVAL AND INSTALLATION (M332-00-111-66300-01)	Attached sheet 3
2015 MIRAGE Service Manual	MSCD-016B-2015	STRUT ASSEMBLY INSPECTION (M332-00-120-60100-01)	Attached sheet 3 (1/2)
		STRUT ASSEMBLY INSPECTION (DISASSEMBLY AND REASSEMBLY) (M332-00-140-37100-01)	Attached sheet 5
		Added below "REAR WHEEL ALIGNMENT CHECK AND ADJUSTMENT" (M341-01-101-33102-01)	Attached sheet 6
		SHOCK ABSORBER AND COIL SPRING REMOVAL AND INSTALLATION (M341-01-630-25900-01)	Attached sheet 8
		Added below "LOWER ARM BALL JOINT DUST COVER CHECK" (M332-00-861-12001-01)	Attached sheet 2
2017 MIRAGE Service Manual	MSCD-016B-2017	STRUT ASSEMBLY REMOVAL AND INSTALLATION (M332-00-111-87800-01)	Attached sheet 4
		STRUT ASSEMBLY INSPECTION (M332-00-120-60100-01)	Attached sheet 4 (2/2)
		STRUT ASSEMBLY INSPECTION (DISASSEMBLY AND REASSEMBLY) (M332-00-140-37100-01)	Attached sheet 5
		Added below "REAR WHEEL ALIGNMENT CHECK AND ADJUSTMENT" (M341-01-101-41601-01)	Attached sheet 6
		SHOCK ABSORBER AND COIL SPRING REMOVAL AND INSTALLATION (M341-01-630-26000-01)	Attached sheet 8
		Added below "LOWER ARM BALL JOINT DUST COVER CHECK" (M332-00-861-23801-01)	Attached sheet 2
2018 MIRAGE Service Manual	MSCD-016B-2018	STRUT ASSEMBLY REMOVAL AND INSTALLATION (M332-00-111-87800-01)	Attached sheet 4
		STRUT ASSEMBLY INSPECTION (M332-00-120-60100-01)	Attached sheet 4 (2/2)
		STRUT ASSEMBLY INSPECTION (DISASSEMBLY AND REASSEMBLY) (M332-00-140-37100-01)	Attached sheet 5
		Added below "REAR WHEEL ALIGNMENT CHECK AND ADJUSTMENT" (M341-01-101-47200-01)	Attached sheet 7
		SHOCK ABSORBER AND COIL SPRING REMOVAL AND INSTALLATION (M341-01-630-26000-01)	Attached sheet 8
		Added below "LOWER ARM BALL JOINT DUST COVER CHECK" (M332-00-861-38000-01)	Attached sheet 2
2019 MIRAGE Service Manual	MSCD-016B-2019	STRUT ASSEMBLY REMOVAL AND INSTALLATION (M332-00-111-87800-01)	Attached sheet 4
		STRUT ASSEMBLY INSPECTION (M332-00-120-60100-01)	Attached sheet 4 (2/2)
2020 MIRAGE Service Manual	MSCD-016B-2020	STRUT ASSEMBLY INSPECTION (DISASSEMBLY AND REASSEMBLY) (M332-00-140-37100-01)	Attached sheet 5
		Added below "REAR WHEEL ALIGNMENT CHECK AND ADJUSTMENT" (M341-01-101-47200-01)	Attached sheet 7
		SHOCK ABSORBER AND COIL SPRING REMOVAL AND INSTALLATION (M341-01-630-26000-01)	Attached sheet 8
		Added below "LOWER ARM BALL JOINT DUST COVER CHECK" (M332-00-861-38000-01)	Attached sheet 2
		STRUT ASSEMBLY REMOVAL AND INSTALLATION (M332-00-111-87800-01)	Attached sheet 4
2021 MIRAGE Service Manual	MSCD-016B-2021	STRUT ASSEMBLY INSPECTION (M332-00-120-60100-01)	Attached sheet 4 (2/2)
		STRUT ASSEMBLY INSPECTION (DISASSEMBLY AND REASSEMBLY) (M332-00-140-37100-01)	Attached sheet 5
2022 MIRAGE Service Manual	MSCD-016B-2022	Added below "REAR WHEEL ALIGNMENT CHECK AND ADJUSTMENT" (M13410110A001200)	Attached sheet 7
		SHOCK ABSORBER AND COIL SPRING REMOVAL AND INSTALLATION (M341-01-630-26000-01)	Attached sheet 8
		Added below "LOWER ARM BALL JOINT DUST COVER CHECK" (M332-00-861-38000-01)	Attached sheet 2
		STRUT ASSEMBLY REMOVAL AND INSTALLATION (M332-00-111-87800-01)	Attached sheet 4

MIRAGE G4

Applicable manual	Pub. No.	Applicable title (INFO-ID/SIE No.)	Content
2017 MIRAGE G4 Service Manual	MSCD-018B-2017	Added below "LOWER ARM BALL JOINT DUST COVER CHECK" (M332-00-861-12001-01)	Attached sheet 2
		STRUT ASSEMBLY REMOVAL AND INSTALLATION (M332-00-111-88900-01)	Attached sheet 4
		STRUT ASSEMBLY INSPECTION (M332-00-120-60100-01)	Attached sheet 4 (2/2)
		STRUT ASSEMBLY INSPECTION (DISASSEMBLY AND REASSEMBLY) (M332-00-140-37100-01)	Attached sheet 5
		Added below "REAR WHEEL ALIGNMENT CHECK AND ADJUSTMENT" (M341-01-101-41601-01)	Attached sheet 6
		SHOCK ABSORBER AND COIL SPRING REMOVAL AND INSTALLATION (M341-01-630-27100-01)	Attached sheet 8
2018 MIRAGE G4 Service Manual	MSCD-019B-2018	Added below "LOWER ARM BALL JOINT DUST COVER CHECK" (M332-00-861-23801-01)	Attached sheet 2
		STRUT ASSEMBLY REMOVAL AND INSTALLATION (M332-00-111-88900-01)	Attached sheet 4
		STRUT ASSEMBLY INSPECTION (M332-00-120-60100-01)	Attached sheet 4 (2/2)
		STRUT ASSEMBLY INSPECTION (DISASSEMBLY AND REASSEMBLY) (M332-00-140-37100-01)	Attached sheet 5
		Added below "REAR WHEEL ALIGNMENT CHECK AND ADJUSTMENT" (M341-01-101-49400-01)	Attached sheet 7
		SHOCK ABSORBER AND COIL SPRING REMOVAL AND INSTALLATION (M341-01-630-27100-01)	Attached sheet 8
2019 MIRAGE G4 Service Manual	MSCD-019B-2019	Added below "LOWER ARM BALL JOINT DUST COVER CHECK" (M332-00-861-39100-01)	Attached sheet 2
		STRUT ASSEMBLY REMOVAL AND INSTALLATION (M332-00-111-88900-01)	Attached sheet 4
2020 MIRAGE G4 Service Manual	MSCD-019B-2020	STRUT ASSEMBLY INSPECTION (M332-00-120-60100-01)	Attached sheet 4 (2/2)
		STRUT ASSEMBLY INSPECTION (DISASSEMBLY AND REASSEMBLY) (M332-00-140-37100-01)	Attached sheet 5
		Added below "REAR WHEEL ALIGNMENT CHECK AND ADJUSTMENT" (M341-01-101-49400-01)	Attached sheet 7
		SHOCK ABSORBER AND COIL SPRING REMOVAL AND INSTALLATION (M341-01-630-27100-01)	Attached sheet 8
2021 MIRAGE G4 Service Manual	MSCD-019B-2021	Added below "LOWER ARM BALL JOINT DUST COVER CHECK" (M332-00-861-39100-01)	Attached sheet 2
		STRUT ASSEMBLY REMOVAL AND INSTALLATION (M332-00-111-88900-01)	Attached sheet 4
2022 MIRAGE G4 Service Manual	MSCD-019B-2022	STRUT ASSEMBLY INSPECTION (M332-00-120-60100-01)	Attached sheet 4 (2/2)
		STRUT ASSEMBLY INSPECTION (DISASSEMBLY AND ASSEMBLY) (M332-00-140-37100-01)	Attached sheet 5
		Added below "REAR WHEEL ALIGNMENT CHECK AND ADJUSTMENT" (M13410110A001100)	Attached sheet 7
		SHOCK ABSORBER AND COIL SPRING REMOVAL AND INSTALLATION (M341-01-630-27100-01)	Attached sheet 8

OUTLANDER

Applicable manual	Pub. No.	Applicable title (INFO-ID/SIE No.)	Contents
2014 OUTLANDER Service Manual	<MMNA> MSCD-007B-2014	Added below "BALL JOINT DUST COVER CHECK" (M332-01-320-18100-01)	Attached sheet 9
		STRUT ASSEMBLY REMOVAL AND INSTALLATION (M332-00-111-64103-01)	Attached sheet 10
2015 OUTLANDER Service Manual	<MMNA> MSCD-007B-2015	STRUT ASSEMBLY INSPECTION (M332-00-120-40700-01)	Attached sheet 10 (2/2)
		Added below "STABILIZER LINK BALL JOINT DUST COVER INSPECTION" (M341-01-910-02700-01)	Attached sheet 12
		SHOCK ABSORBER ASSEMBLY REMOVAL AND INSTALLATION (M341-00-251-02602-01)	Attached sheet 13
		SHOCK ABSORBER ASSEMBLY INSPECTION (M341-00-260-24600-01)	Attached sheet 13
2016 OUTLANDER Service Manual	<MMNA> MSCD-007B-2016	Added below "BALL JOINT DUST COVER CHECK" (M332-01-320-18100-01)	Attached sheet 9
		STRUT ASSEMBLY REMOVAL AND INSTALLATION (M332-00-111-64103-01)	Attached sheet 11
		STRUT ASSEMBLY INSPECTION (M332-00-120-40700-01)	Attached sheet 11 (3/3)
		Added below "STABILIZER LINK BALL JOINT DUST COVER INSPECTION" (M341-01-910-02700-01)	Attached sheet 12
		SHOCK ABSORBER ASSEMBLY REMOVAL AND INSTALLATION (M341-00-251-02602-01)	Attached sheet 13
		SHOCK ABSORBER ASSEMBLY INSPECTION (M341-00-260-24600-01)	Attached sheet 13
2017 OUTLANDER Service Manual	<MMNA> MSCD-007B-2017	Added below "BALL JOINT DUST COVER CHECK" (M332-01-320-18100-01)	Attached sheet 9
		STRUT ASSEMBLY REMOVAL AND INSTALLATION (M332-00-111-64104-01)	Attached sheet 11
2018 OUTLANDER Service Manual	<MMNA> MSCD-007B-2018	STRUT ASSEMBLY INSPECTION (M332-00-120-40700-01)	Attached sheet 11 (3/3)
		Added below "STABILIZER LINK BALL JOINT DUST COVER INSPECTION" (M341-01-910-02700-01)	Attached sheet 12
2019 OUTLANDER Service Manual	<MMNA> MSCD-007B-2019	SHOCK ABSORBER ASSEMBLY REMOVAL AND INSTALLATION (M341-00-251-11200-01)	Attached sheet 14
		SHOCK ABSORBER ASSEMBLY INSPECTION (M341-00-260-24600-01)	Attached sheet 15
2020 OUTLANDER Service Manual	<MMNA> MSCD-007B-2020	SHOCK ABSORBER ASSEMBLY INSPECTION (M341-00-260-24600-01)	Attached sheet 15

OUTLANDER PHEV

Applicable manual	Pub. No.	Applicable title (INFO-ID/SIE No.)	Contents
2018 OUTLANDER PHEV Service Manual	<MMNA> MSCD-027B-2018	Added below "BALL JOINT DUST COVER CHECK" (M332-01-320-18100-01)	Attached sheet 9
		STRUT ASSEMBLY REMOVAL AND INSTALLATION (M332-00-111-64104-01)	Attached sheet 11
2019 OUTLANDER PHEV Service Manual	<MMNA> MSCD-027B-2019	STRUT ASSEMBLY INSPECTION (M332-00-120-40700-01)	Attached sheet 11 (3/3)
		Added below "STABILIZER LINK BALL JOINT DUST COVER INSPECTION" (M341-01-910-02700-01)	Attached sheet 12
2020 OUTLANDER PHEV Service Manual	<MMNA> MSCD-027B-2020	SHOCK ABSORBER ASSEMBLY REMOVAL AND INSTALLATION (M341-00-251-11200-01)	Attached sheet 14
		SHOCK ABSORBER ASSEMBLY INSPECTION (M341-00-260-24600-01)	Attached sheet 15
2021 OUTLANDER PHEV Service Manual	<MMNA> MSCD-027B-2021	SHOCK ABSORBER ASSEMBLY INSPECTION (M341-00-260-24600-01)	Attached sheet 15

OUTLANDER SPORT

Applicable manual	Pub. No.	Applicable title (INFO-ID/SIE No.)	Contents
2011 OUTLANDER SPORT/ RVR Service Manual	<MMNA> MSCD-017B-2011	Added below "BALL JOINT DUST COVER CHECK" (M332-01-320-16900-01)	Attached sheet 16
		STRUT ASSEMBLY REMOVAL AND INSTALLATION (M332-00-111-45803-01)	Attached sheet 17
2012 OUTLANDER SPORT/ RVR Service Manual	<MMNA> MSCD-017B-2012	STRUT ASSEMBLY INSPECTION (M332-00-120-58200-01)	Attached sheet 17 (2/2)
		STRUT ASSEMBLY INSPECTION (DISASSEMBLY AND REASSEMBLY) (M332-00-140-35900-01)	Attached sheet 18
2013 OUTLANDER SPORT/ RVR Service Manual	<MMNA> MSCD-017B-2013	Added below "STABILIZER LINK BALL JOINT DUST COVER INSPECTION" (M341-01-910-08300-01)	Attached sheet 19
		SHOCK ABSORBER ASSEMBLY REMOVAL AND INSTALLATION (M341-00-250-92604-01)	Attached sheet 20
		SHOCK ABSORBER ASSEMBLY INSPECTION (M341-00-260-29100-01)	Attached sheet 20
2014 OUTLANDER SPORT/ RVR/ASX Service Manual	<MMNA> MSCD-017B-2014	Added below "BALL JOINT DUST COVER CHECK" (M332-01-320-16900-01)	Attached sheet 16
		STRUT ASSEMBLY REMOVAL AND INSTALLATION (M332-00-111-45803-01)	Attached sheet 17
2015 OUTLANDER SPORT/ RVR/ASX Service Manual	<MMNA> MSCD-017B-2015	STRUT ASSEMBLY INSPECTION (M332-00-120-58200-01)	Attached sheet 17 (2/2)
		STRUT ASSEMBLY INSPECTION (DISASSEMBLY AND REASSEMBLY) (M332-00-140-35900-01)	Attached sheet 18
		Added below "STABILIZER LINK BALL JOINT DUST COVER INSPECTION" (M341-01-910-08300-01)	Attached sheet 19
		SHOCK ABSORBER ASSEMBLY REMOVAL AND INSTALLATION (M341-00-250-92604-01)	Attached sheet 21
		SHOCK ABSORBER ASSEMBLY INSPECTION (M341-00-260-29100-01)	Attached sheet 22
2016 OUTLANDER SPORT/ RVR/ASX Service Manual	<MMNA> MSCD-017B-2016	Added below "BALL JOINT DUST COVER CHECK" (M332-01-320-16900-01)	Attached sheet 16
		STRUT ASSEMBLY REMOVAL AND INSTALLATION (M332-00-111-45803-01)	Attached sheet 17
2017 OUTLANDER SPORT/ RVR/ASX Service Manual	<MMNA> MSCD-017B-2017	STRUT ASSEMBLY INSPECTION (M332-00-120-58200-01)	Attached sheet 17 (2/2)
		STRUT ASSEMBLY INSPECTION (DISASSEMBLY AND REASSEMBLY) (M332-00-140-35900-01)	Attached sheet 18
2018 OUTLANDER SPORT/ RVR Service Manual	<MMNA> MSCD-017B-2018	Added below "STABILIZER LINK BALL JOINT DUST COVER INSPECTION" (M341-01-910-08300-01)	Attached sheet 19
		SHOCK ABSORBER ASSEMBLY REMOVAL AND INSTALLATION (M341-00-250-92604-01)	Attached sheet 23
2019 OUTLANDER SPORT/ RVR Service Manual	<MMNA> MSCD-017B-2019	SHOCK ABSORBER ASSEMBLY INSPECTION (M341-00-260-29100-01)	Attached sheet 23 (2/3)
2020 OUTLANDER SPORT/ RVR Service Manual	<MMNA> MSCD-017B-2020		
2021 OUTLANDER SPORT/ RVR Service Manual	<MMNA> MSCD-017B-2021		
2022 OUTLANDER SPORT/ RVR Service Manual	<MMNA> MSCD-017B-2022		

ECLIPSE CROSS

Applicable manual	Pub. No.	Applicable title (INFO-ID/SIE No.)	Contents
2018 ECLIPSE CROSS Service Manual	MSCD-020B-2018	Added below "BALL JOINT DUST COVER CHECK" (M332-01-320-18100-01)	Attached sheet 24
		STRUT ASSEMBLY REMOVAL AND INSTALLATION (M332-00-112-06400-01)	Attached sheet 25
2019 ECLIPSE CROSS Service Manual	MSCD-020B-2019	STRUT ASSEMBLY INSPECTION (M332-00-120-40700-01)	Attached sheet 25 (2/2)
		Added below "STABILIZER LINK BALL JOINT DUST COVER INSPECTION" (M341-01-910-02700-01)	Attached sheet 26
2020 ECLIPSE CROSS Service Manual	MSCD-020B-2020	SHOCK ABSORBER ASSEMBLY REMOVAL AND INSTALLATION (M341-00-251-14500-01)	Attached sheet 27
		SHOCK ABSORBER ASSEMBLY INSPECTION (M341-00-260-24601-01)	Attached sheet 27 (2/3)
2022 ECLIPSE CROSS Service Manual	MSCD-020B-2022	STRUT ASSEMBLY REMOVAL AND INSTALLATION (M13320011A004400)	Attached sheet 28
		SHOCK ABSORBER ASSEMBLY REMOVAL AND INSTALLATION (M13410025A002500)	Attached sheet 29

FRONT SUSPENSION STRUT ASSEMBLY

LOWER ARM BALL JOINT DUST COVER CHECK

M1332008601120

1. Press the lower arm ball joint dust cover with your finger to check that there are no cracks or damage in the lower arm ball joint cover.
2. If the lower arm ball joint dust cover is cracked or damaged, replace the lower arm assembly.

NOTE: If the lower arm ball joint dust cover is cracked or damaged, it is possible that there may also be damage to the ball joint.

<Added>

STRUT ASSEMBLY INSPECTION

Check for the following items. If there is any abnormality, replace the faulty part.

- Oil leakage, damage and deformation of the strut
- Crack, deterioration and damage of the coil spring
- Crack of the strut insulator rubber, spring pad (upper) and spring pad (lower)
- Damage and deformation of the strut damper

STRUT ASSEMBLY

REMOVAL AND INSTALLATION

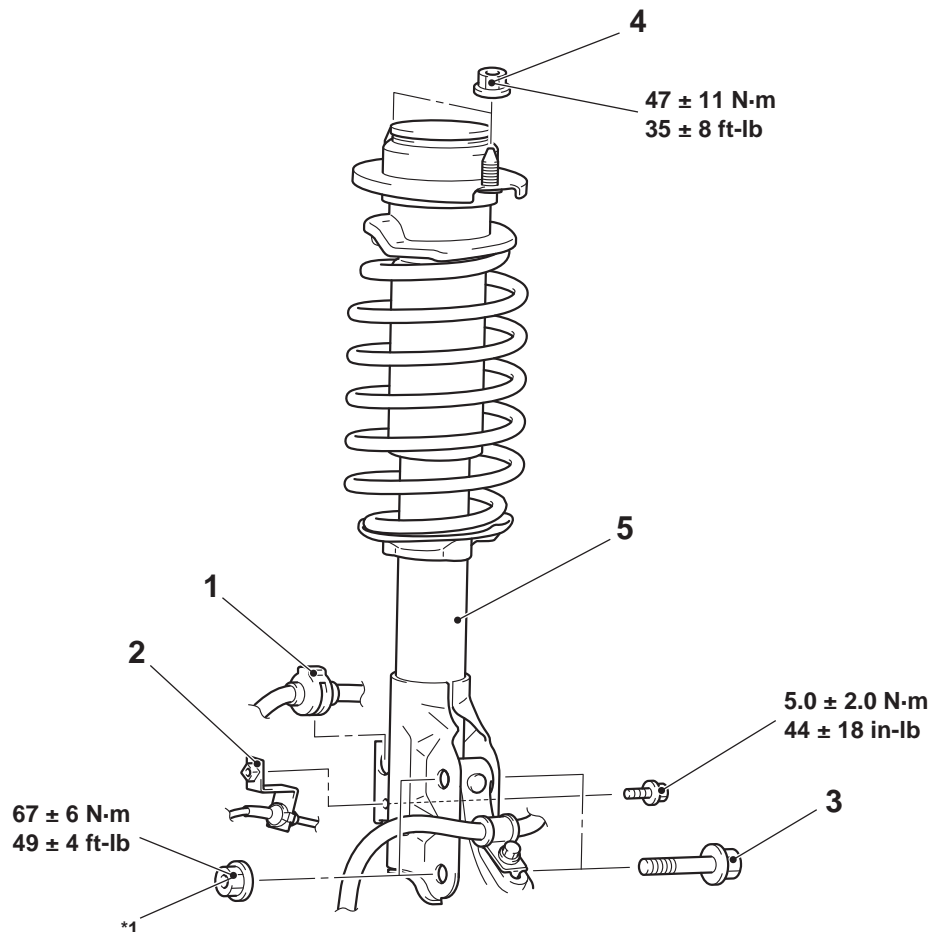
M1332001101663

⚠ CAUTION

- The parts indicated by *1 are the nut with friction coefficient stabilizer. In removal, ensure there is no damage, clean dust and soiling from the bearing and thread surfaces, and tighten them to the specified torque.

Post-installation Operation

- Front Wheel Alignment Check and Adjustment



FRONT SUSPENSION STRUT ASSEMBLY

- >>A<<**
- Removal steps**
1. Brake hose grommet
 2. Front wheel speed sensor harness bracket

<Added> >>AA<<

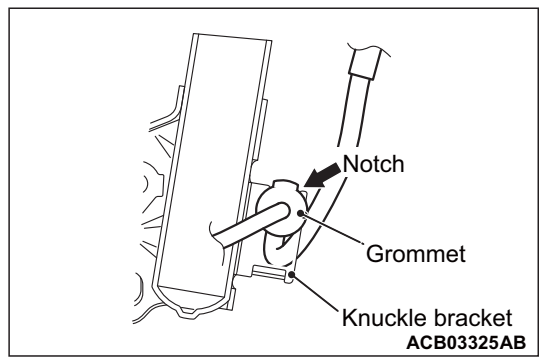
- Removal steps**
3. Knuckle connection
 4. Strut nut
 5. Strut assembly

<Added> Attached sheet 3 (2/2)

INSTALLATION SERVICE POINT

>>A<< BRAKE HOSE GROMMET INSTALLATION

Insert grommet to knuckle bracket securely as shown. The notch of grommet must be coincided with the top end of knuckle bracket.



<Deleted>

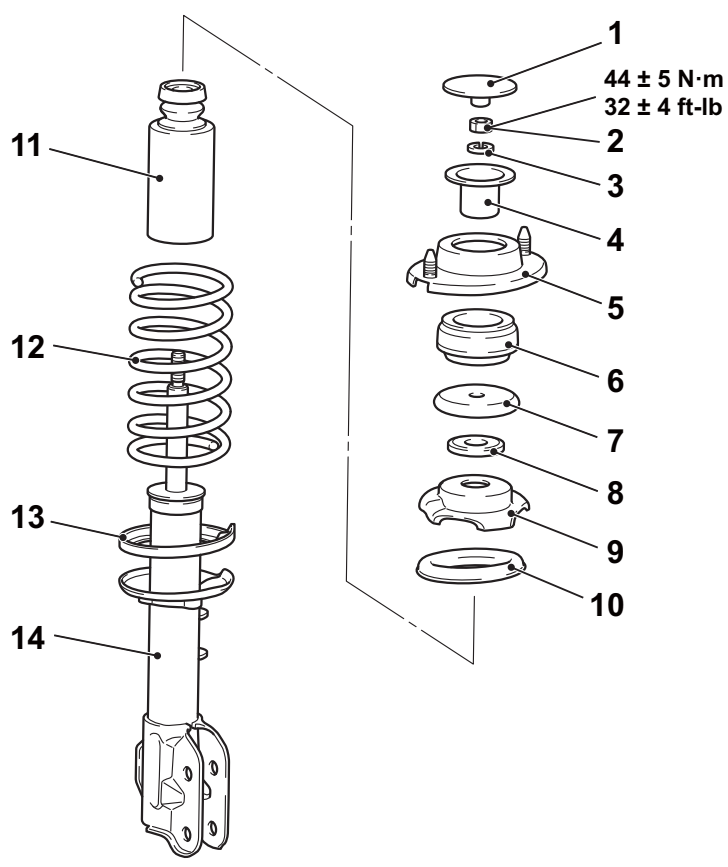
~~INSPECTION~~

- Check for oil leaks from the strut assembly.
- Check the strut assembly for damage or deformation.

M1332001200601

DISASSEMBLY AND REASSEMBLY

M1332001301184



ACC05711AB

**>>AA<< STRUT ASSEMBLY
INSTALLATION**

Before installing the strut assembly, check for the following items. If there is any abnormality, replace the faulty part.

- Oil leakage, damage and deformation of the strut
- Crack, deterioration and damage of the coil spring
- Crack of the strut insulator rubber, spring pad (upper) and spring pad (lower)
- Damage and deformation of the strut damper

FRONT SUSPENSION
STRUT ASSEMBLY

STRUT ASSEMBLY

REMOVAL AND INSTALLATION

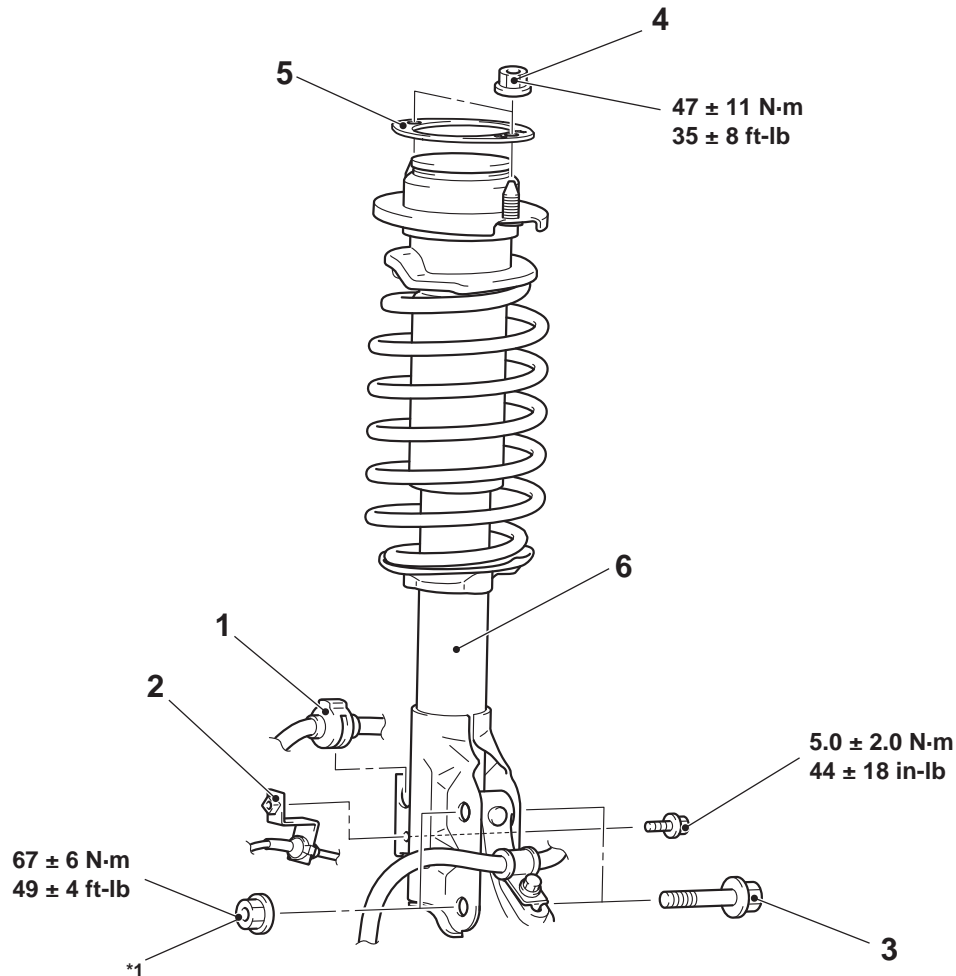
M1332001101878

CAUTION

- The parts indicated by *1 are the nut with friction coefficient stabilizer. Prior to reinstallation, ensure there is no damage, clean dust and soiling from the bearing and thread surfaces, and tighten them to the specified torque.

Post-installation Operation

- Front Wheel Alignment Check and Adjustment



ACF03592AD

- >>B<<
- Removal steps**
1. Brake hose grommet
 2. Front wheel speed sensor harness bracket
 3. Knuckle connection

- >>A<<
- <Added> >>AA<<
- Removal steps (Continued)**
4. Strut nut
 5. Strut house stiffener
 6. Strut assembly

FRONT SUSPENSION STRUT ASSEMBLY

INSTALLATION SERVICE POINT

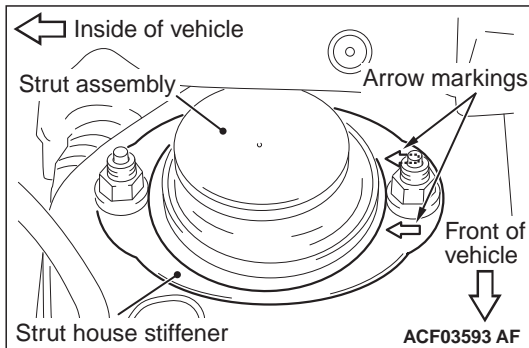
<Added> >>AA<< STRUT ASSEMBLY INSTALLATION

Before installing the strut assembly, check for the following items. If there is any abnormality, replace the faulty part.

- Oil leakage, damage and deformation of the strut
- Crack, deterioration and damage of the coil spring
- Crack of the strut insulator rubber, spring pad (upper) and spring pad (lower)
- Damage and deformation of the strut damper

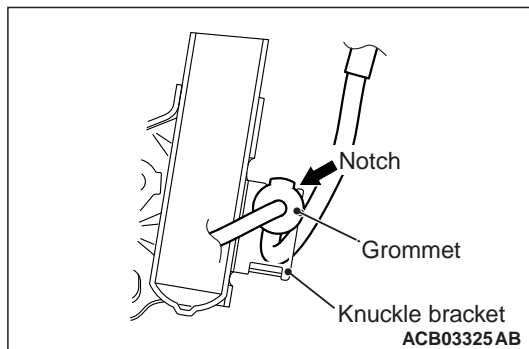
>>A<< STRUT HOUSE STIFFENER INSTALLATION

Install the strut house stiffener so that the two arrow markings on the strut house stiffener face in the direction shown in the figure.



>>B<< BRAKE HOSE GROMMET INSTALLATION

Insert grommet to knuckle bracket securely as shown. The notch of grommet must be coincided with the top end of knuckle bracket.



<Deleted>

~~INSPECTION~~

M1332001200601

- ~~Check for oil leaks from the strut assembly.~~
- ~~Check the strut assembly for damage or deformation.~~

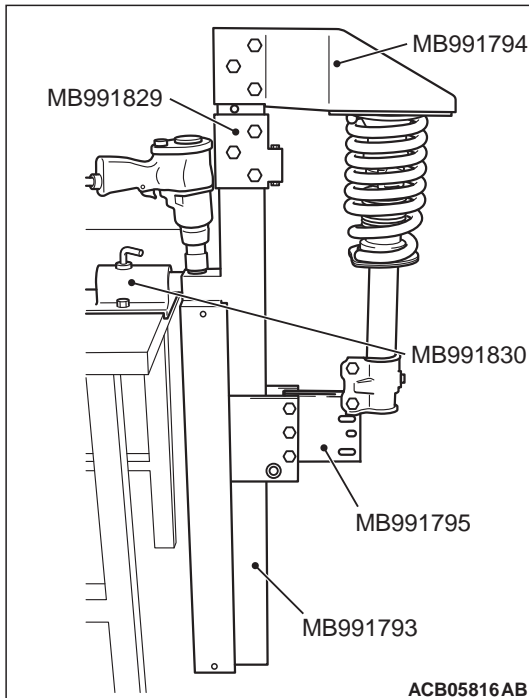
FRONT SUSPENSION STRUT ASSEMBLY

CAUTION

Be careful that the hand is not pinched by the coil spring when aligning the piston rod with the hole of upper insulator while compressing the coil spring.

2. While passing the strut piston rod through the hole of upper insulator by hand, slowly compress the coil spring by the following special tool:

- Spring compressor (MB991793)
- Attachment A (MB991795)
- Arm bracket (MB991829)
- Upper plate (MB991794)
- Fixture (MB991830)

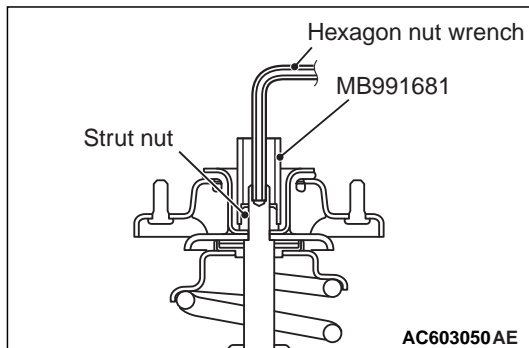


CAUTION

The locking nut for the piston rod inside the strut may be loose. Do not use the impact wrench to loosen the strut nut.

3. Counterhold the piston rod, then use the wrench (special tool: MB991681) to tighten the strut nut to the specified torque.

Tightening torque: 44 ± 5 N·m (32 ± 4 ft-lb)



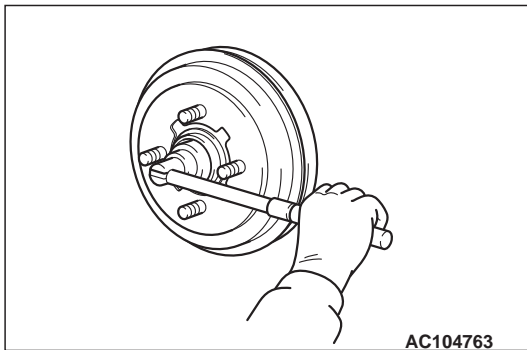
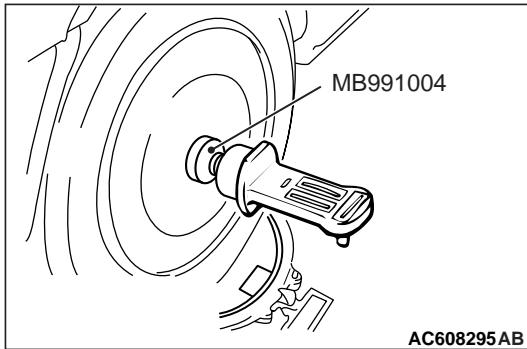
<Deleted>

~~INSPECTION~~

M1332001400371

- Check the strut bearing for wear or rust.
- Check the rubber parts for damage or deterioration.
- Check the coil spring for deformation, deterioration or damage.
- Check the strut for deformation.

REAR SUSPENSION ON-VEHICLE SERVICE



- Difference between right and left wheels must be $0^{\circ}30'$ or less.
- The camber is pre-adjusted at factory and is not adjustable.
- For vehicles with aluminum wheels, tighten special tool wheel alignment gauge attachment (MB991004) to the specified torque, then measure the camber.

CAUTION

- Before securely tightening the self-locking nuts, make sure there is no load on the wheel bearings. Otherwise the wheel bearing will be damaged.
- Use an manual tool only to tighten the self-locking nut. (Do not use an electric or air tool).
- Do not tighten the self-locking nut more than eight turns per one minute.

<Added>

SHOCK ABSORBER AND COIL SPRING INSPECTION

Check for the following items. If there is any abnormality, replace the faulty part.

- Oil leakage, damage and deformation of the shock absorber assembly
- Crack, deterioration and damage of the coil spring
- Crack of the upper spring pad, lower spring pad, upper bushing and lower bushing
- Damage and deformation of the bump stopper

REAR SUSPENSION ON-VEHICLE SERVICE

STEP 3. Check the torsion axle arm assembly for deformity or damage.

Q: Are the torsion axle arm assembly in good condition?

YES : Go to Step 4.

NO : Replace the faulty part, and then go to Step 4.

STEP 4. Retest the system.

Q: Is the malfunction eliminated?

YES : The procedure is complete.

NO : Return to Step 1.

ON-VEHICLE SERVICE

REAR WHEEL ALIGNMENT CHECK AND ADJUSTMENT

M1341011001472

Measure wheel alignment with an alignment equipment on level ground.

The rear suspension, wheels, and tires should be serviced to the normal condition prior to wheel alignment measurement.

TOE-IN

Standard value:

At the center of tire tread: 2.5 ± 3 mm (0.10 ± 0.12 inch)

NOTE:

The toe-in is pre-adjusted at factory and is not adjustable.

CAMBER

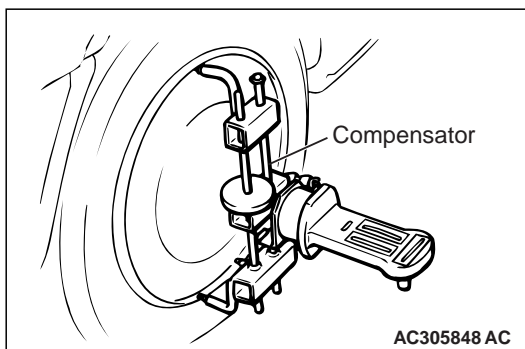
Required Special Tools:

- MB991004: Wheel Alignment Gauge Attachment

Standard value: $-1^{\circ}00' \pm 0^{\circ}45'$

NOTE:

- *Difference between right and left wheels must be $0^{\circ}30'$ or less.*
- *The camber is pre-adjusted at factory and is not adjustable.*
- *For vehicles with aluminium wheels, we recommend that a compensator be used to measure the camber.*



SHOCK ABSORBER AND COIL SPRING INSPECTION

<Added>

Check for the following items. If there is any abnormality, replace the faulty part.

- Oil leakage, damage and deformation of the shock absorber assembly
- Crack, deterioration and damage of the coil spring
- Crack of the upper spring pad, lower spring pad, upper bushing and lower bushing
- Damage and deformation of the bump stopper

REAR SUSPENSION
SHOCK ABSORBER AND COIL SPRING

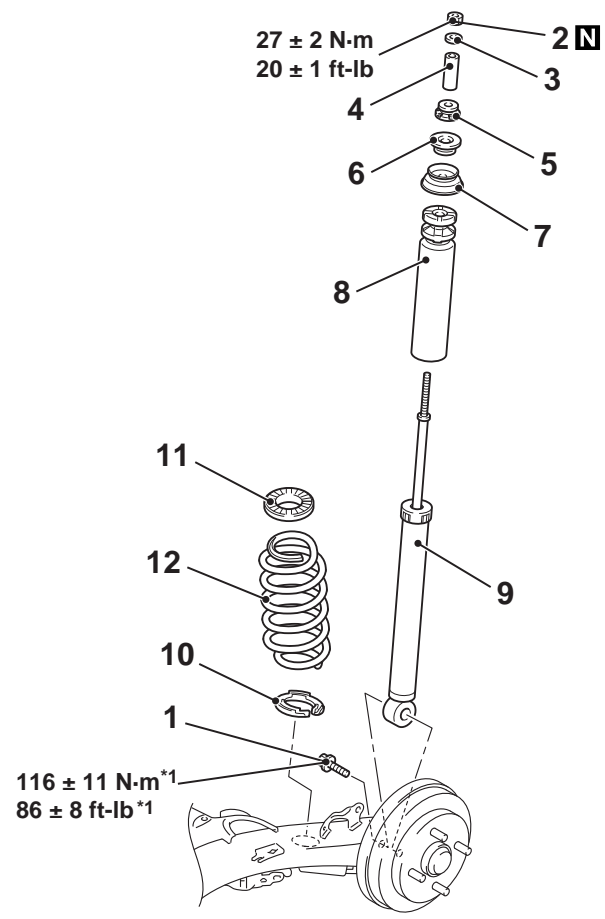
SHOCK ABSORBER AND COIL SPRING

REMOVAL AND INSTALLATION

M1341016300259

CAUTION

- The parts indicated by *1 should be temporarily tightened, and then fully tightened with the vehicle standing on the ground and the curb weight condition.



ACB03392AB

<<A>>

Removal steps

1. Bolt (Securing the shock absorber assembly to the torsion axle assembly)
 - Maintenance lid (refer to GROUP 52A – Interior Trim).
2. Self-locking nut
3. Washer
4. Collar

Removal steps (Continued)

5. Upper bushing
6. Lower bushing
7. Cup
8. Bump stopper
9. Shock absorber assembly
- >>A<< 10. Lower spring pad
- >>A<< 11. Upper spring pad
- >>A<< 12. Coil spring

<Added> >>AA<< • Pre-installation inspection

REMOVAL SERVICE POINT

<<A>> BOLT REMOVAL

Jack up and support the torsion axle arm assembly, and remove the bolt.

REAR SUSPENSION SHOCK ABSORBER AND COIL SPRING

NOTE: Do not support the torsion beam in order to prevent damage.

INSTALLATION SERVICE POINT

<Added>

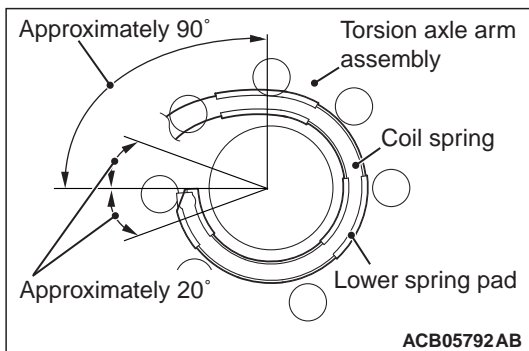
>>AA<< PRE-INSTALLATION INSPECTION

Check for the following items. If there is any abnormality, replace the faulty part.

- Oil leakage, damage and deformation of the shock absorber assembly
- Crack, deterioration and damage of the coil spring
- Crack of the upper spring pad, lower spring pad, upper bushing and lower bushing
- Damage and deformation of the bump stopper

>>A<< COIL SPRING/UPPER SPRING PAD/LOWER SPRING PAD INSTALLATION

1. The identification color of the coil spring should be located at the lower side.
2. Fit the lower pad and the upper pad into the coil spring ends.
3. The lower end of the coil spring should be position $90 \pm 20^\circ$ counterclockwise away from the vehicle front direction.



**FRONT SUSPENSION
ON-VEHICLE SERVICE**

BALL JOINT DUST COVER CHECK

M1332013200181

LOWER ARM BALL JOINT DUST COVER CHECK

1. Using your fingers, press the dust cover to check for a crack or damage.
2. If the dust cover has any crack or damage, replace the lower arm assembly

NOTE: If the dust cover has a crack or damage, the ball joint could be damaged.

STABILIZER LINK BALL JOINT DUST COVER CHECK

1. Check the dust cover for cracks or damage by pushing it with your finger.
2. If the dust cover is cracked or damaged, replace the stabilizer link

NOTE: If the dust cover has a crack or damage, the ball joint could be damage.

<Added>

STRUT ASSEMBLY INSPECTION

Check for the following items. If there is any abnormality, replace the faulty part.

- Oil leakage, damage and deformation of the strut
- Crack, deterioration and damage of the coil spring
- Crack of the strut insulator assembly, upper spring pad and lower spring pad
- Damage and deformation of the bump stopper

FRONT SUSPENSION
STRUT ASSEMBLY

STRUT ASSEMBLY

REMOVAL AND INSTALLATION

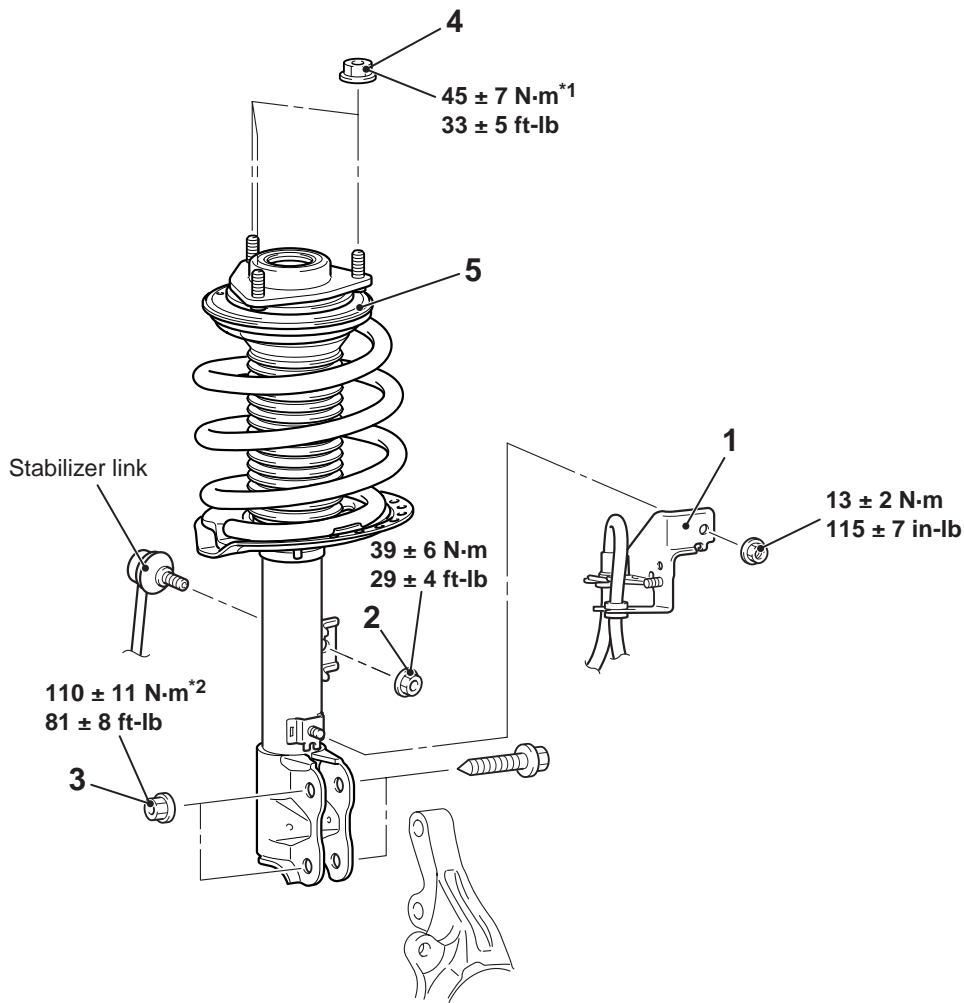
M1332001101641

CAUTION

- The parts indicated by *¹ indicates parts which should be temporarily tightened, and then fully tightened with the vehicle standing on the ground and the curb weight condition.
- The parts indicated by *² is the nuts with friction coefficient stabilizer. During removal, ensure there is no damage, clean dust and soiling from the bearing and thread surfaces, and tighten it to the specified torque.

Post-installation Operation

- Front Wheel Alignment Check and Adjustment



ACB05446AB

Removal steps

- <<A>> >>A<<
1. Brake hose bracket
 2. Stabilizer link and strut connection nut

<Added> >>AA<<

Removal steps (Continued)

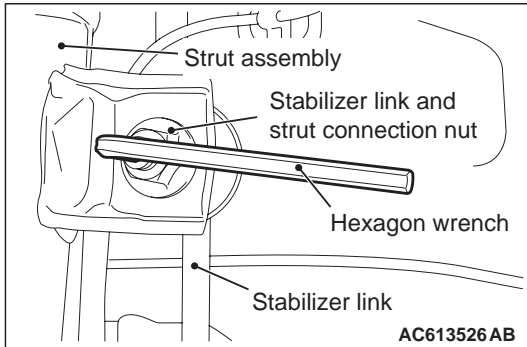
3. Knuckle and strut connection
4. Strut mounting nut
5. Strut assembly

FRONT SUSPENSION STRUT ASSEMBLY

REMOVAL SERVICE POINT

<<A>> STABILIZER LINK AND STRUT CONNECTION NUT REMOVAL

Use a hexagon wrench to remove the stabilizer link and strut connection nut as shown in the figure.



INSTALLATION SERVICE POINT

<Added>

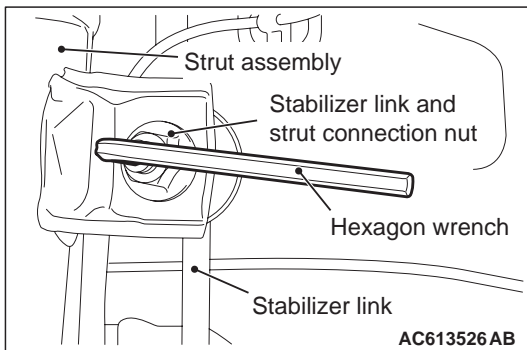
>>AA<< STRUT ASSEMBLY INSTALLATION

Before installing the strut assembly, check for the following items. If there is any abnormality, replace the faulty part.

- Oil leakage, damage and deformation of the strut
- Crack, deterioration and damage of the coil spring
- Crack of the strut insulator assembly, upper spring pad and lower spring pad
- Damage and deformation of the bump stopper

>>A<< STABILIZER LINK AND STRUT CONNECTION NUT INSTALLATION

Use a hexagon wrench to install the stabilizer link and strut connection nut as shown in the figure.



<Deleted>

~~INSPECTION~~

M1332001200407

- Check for oil leaks from the strut assembly.
- Check the strut assembly for damage or deformation.

FRONT SUSPENSION
STRUT ASSEMBLY

STRUT ASSEMBLY

REMOVAL AND INSTALLATION

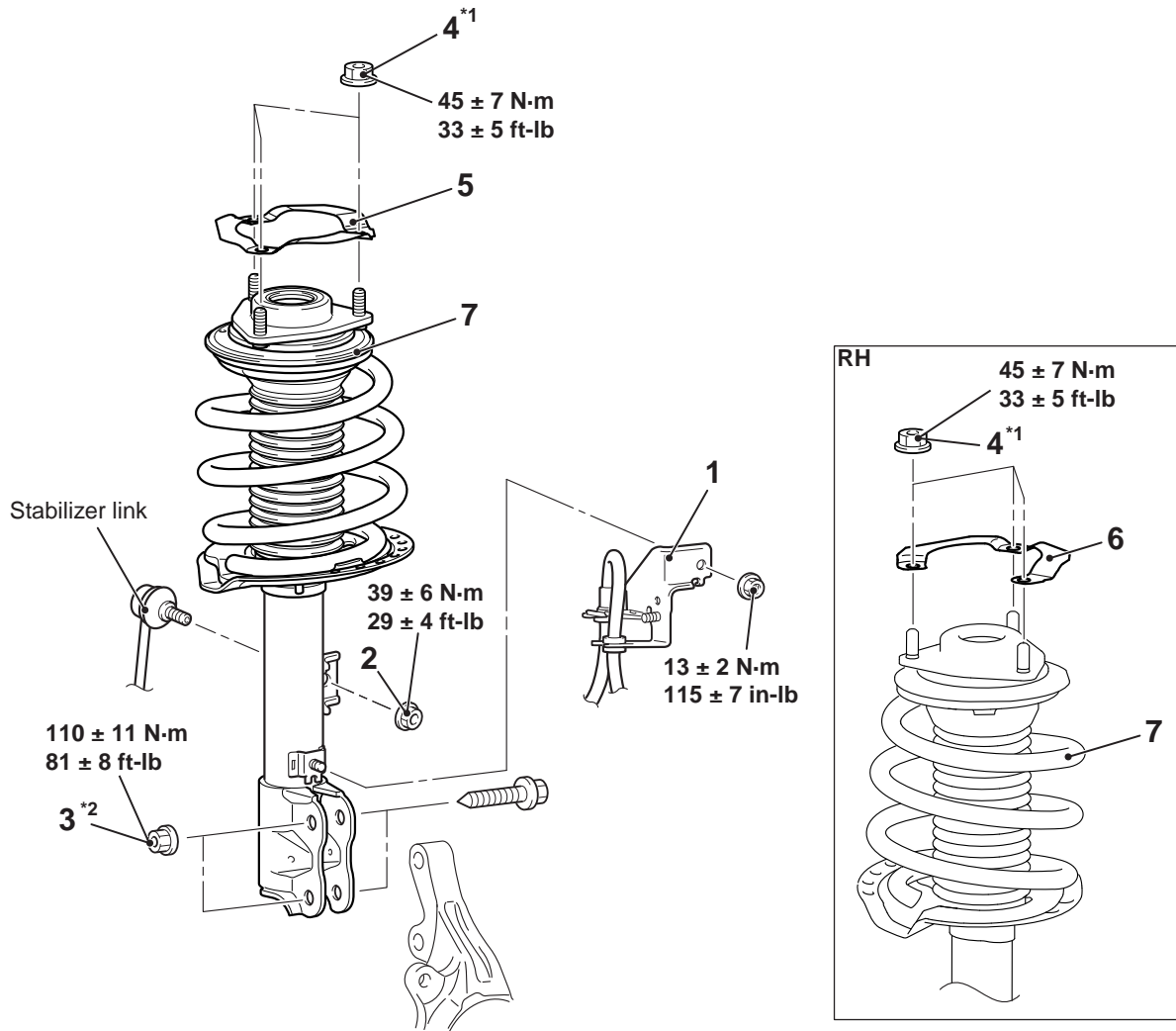
M1332001101641

CAUTION

- The parts indicated by *1 indicates parts which should be temporarily tightened, and then fully tightened with the vehicle standing on the ground at curb weight.
- The parts indicated by *2 is the nuts with friction coefficient stabilizer. Prior to reinstallation, ensure there is no damage, clean dust and soiling from the bearing and thread surfaces, and tighten it to the specified torque.

Post-installation Operation

- Front Wheel Alignment Check and Adjustment



ACE02736AE

Removal steps

- <<A>> >>B<<
1. Brake hose bracket
 2. Stabilizer link and strut connection nut
 3. Knuckle and strut connection
 4. Strut mounting nut

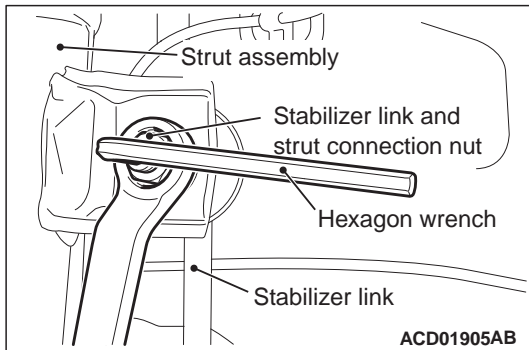
Removal steps (Continued)

- >>A<< 5. Front suspension strut stiffener plate (LH)
- >>A<< 6. Front suspension strut stiffener plate (RH)
- <Added> >>AA<< 7. Strut assembly

FRONT SUSPENSION STRUT ASSEMBLY

REMOVAL SERVICE POINT

<<A>> STABILIZER LINK AND STRUT CONNECTION NUT REMOVAL



Use a wrench to counterhold the stabilizer link as shown. Then use a hexagon wrench to remove the nut securing the stabilizer link to the strut.

INSTALLATION SERVICE POINTS

<Added>

>>AA<< STRUT ASSEMBLY INSTALLATION

Before installing the strut assembly, check for the following items. If there is any abnormality, replace the faulty part.

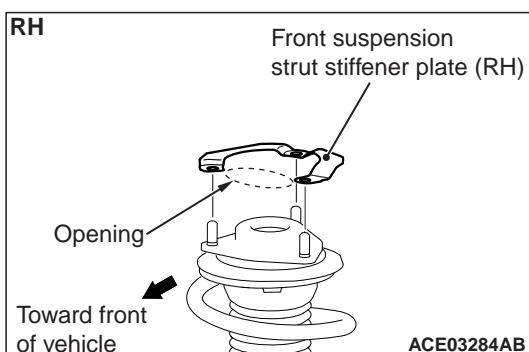
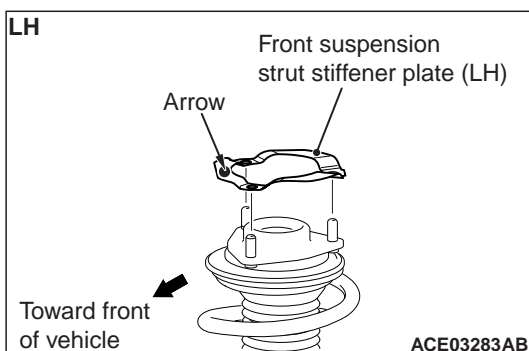
- Oil leakage, damage and deformation of the strut
- Crack, deterioration and damage of the coil spring
- Crack of the strut insulator assembly, upper spring pad and lower spring pad
- Damage and deformation of the bump stopper

>>A<< FRONT SUSPENSION STRUT STIFFENER PLATE (LH, RH) INSTALLATION

⚠ CAUTION

The front suspension strut stiffener plate (LH, RH) must be installed in a particular direction. Be sure to install them as shown.

1. Install the front suspension strut stiffener plate (LH) so that the arrow faces toward the front of the vehicle.

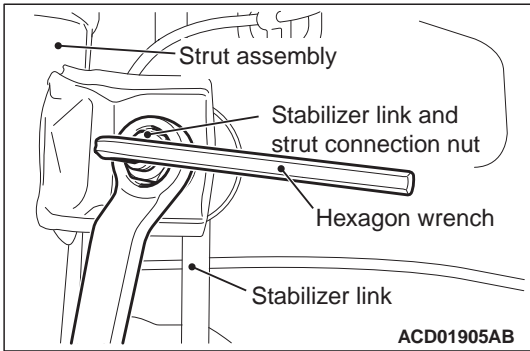


2. Install the front suspension strut stiffener plate (RH) so that the opening faces toward the front of the vehicle.

**FRONT SUSPENSION
STRUT ASSEMBLY**

**>>B<< STABILIZER LINK AND STRUT
CONNECTION NUT INSTALLATION**

Use a wrench to counterhold the stabilizer link as shown. Then use a hexagon wrench to install the nut securing the stabilizer link to the strut.



<Deleted>

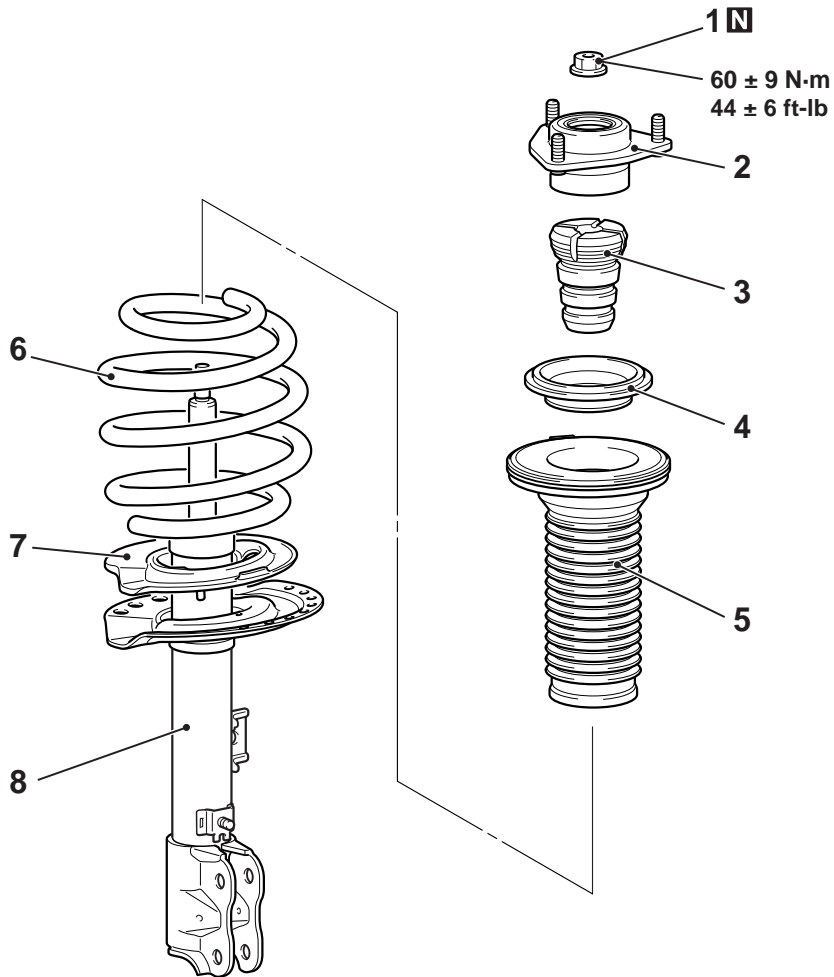
INSPECTION

M1332001200407

- Check for oil leaks from the strut assembly.
- Check the strut assembly for damage or deformation.

DISASSEMBLY AND REASSEMBLY

M1332001301151



ACC00558 AB

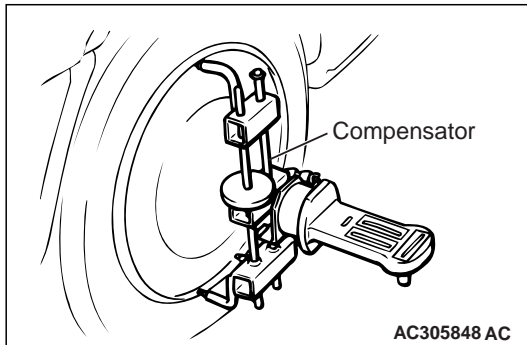
REAR SUSPENSION ON-VEHICLE SERVICE

CAMBER

Standard value: $-0^{\circ}30' \pm 0^{\circ}45'$ (Difference between right and left wheels must be $0^{\circ}30'$ or less)

NOTE:

- The camber is pre-adjusted at factory and is not adjustable.
- As for vehicles with aluminum wheel, use a compensator to measure the camber and caster.



STABILIZER LINK BALL JOINT DUST COVER INSPECTION

M1341019100027

1. Using your fingers, press the dust cover to check for a crack or damage.
2. If the dust cover has a crack or damage, replace the stabilizer link.

NOTE: If the dust cover has a crack or damage, the ball joint could be damaged.

<Added>

SHOCK ABSORBER ASSEMBLY INSPECTION

Check for the following items. If there is any abnormality, replace the faulty part.

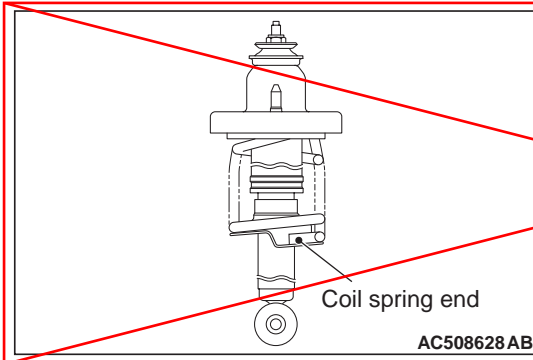
- Oil leakage, damage and deformation of the shock absorber
- Crack, deterioration and damage of the coil spring
- Crack of the spring upper pad, spring upper bracket assembly, bushing A and bushing B
- Damage and deformation of the bump rubber

REAR SUSPENSION SHOCK ABSORBER ASSEMBLY

INSTALLATION SERVICE POINT

>>A<< SHOCK ABSORBER ASSEMBLY INSTALLATION

<Incorrect>



Install the shock absorber assembly so that the coil spring end faces the rear of the vehicle.

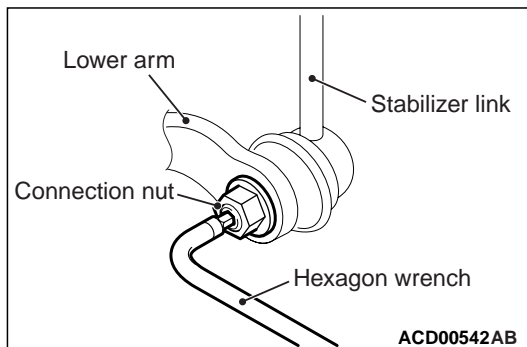
<Correct>

Before installing the shock absorber assembly, check for the following items. If there is any abnormality, replace the faulty part.

- Oil leakage, damage and deformation of the shock absorber
- Crack, deterioration and damage of the coil spring
- Crack of the spring upper pad, spring upper bracket assembly, bushing A and bushing B
- Damage and deformation of the bump rubber

>>B<< STABILIZER LINK AND LOWER ARM CONNECTION NUT INSTALLATION

Use a hexagon wrench to install the stabilizer link and lower arm connection nut as shown in the figure.



<Deleted>

INSPECTION

- Check the rubber parts for cracks and wear.
- Check the shock absorber for malfunctions, oil leakage, or abnormal noise.

M1341002600246

**REAR SUSPENSION
SHOCK ABSORBER ASSEMBLY**

SHOCK ABSORBER ASSEMBLY

REMOVAL AND INSTALLATION

M1341002501112

⚠ CAUTION

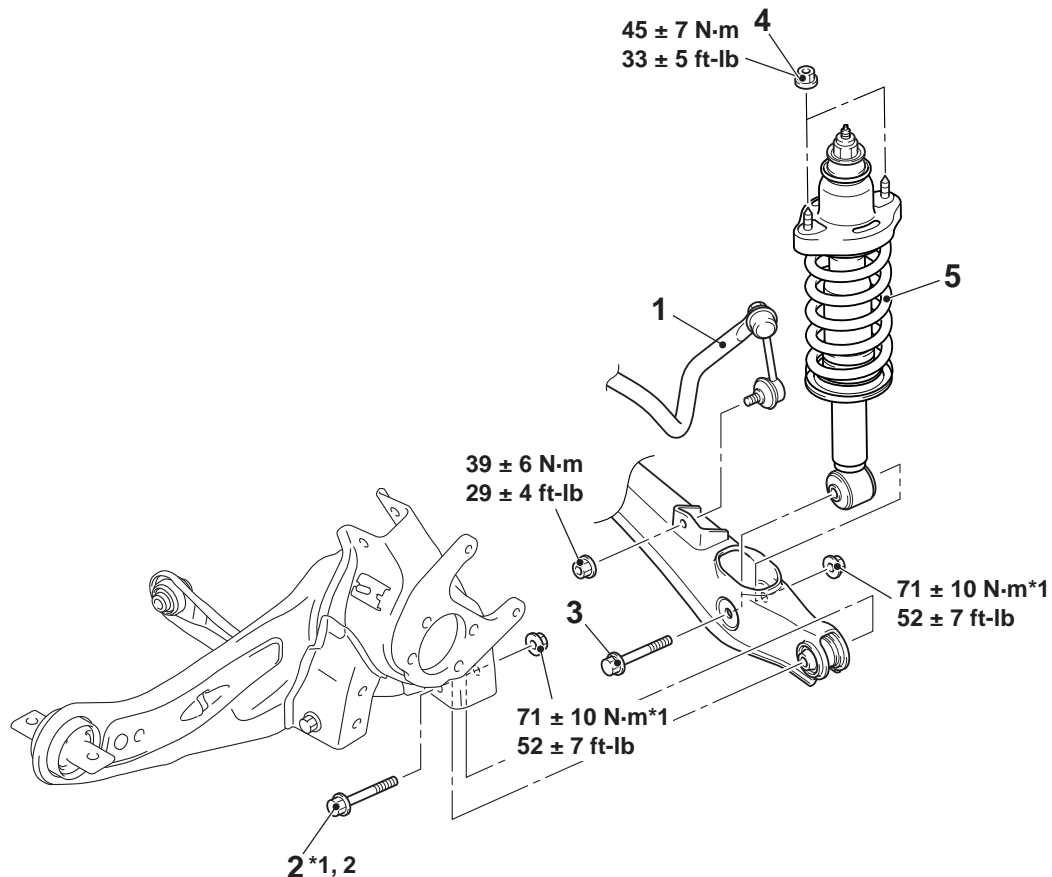
- The parts indicated by *¹ should be temporarily tightened, and then fully tightened with the vehicle standing on the ground and the curb weight condition.
- *² indicates a bolt with stabilizer for coefficient of friction. When you tighten it, note the following:
 - Check the bolt for any damage.
 - Clean the seating and thread of the bolt.
 - Observe the specified torque.

Pre-removal Operation

Quarter Trim Tray Removal (Refer to GROUP 52A – Interior Trim).

Post-installation Operation

- Quarter Trim Tray Installation (Refer to GROUP 52A – Interior Trim).
- Check the Dust Cover for Cracks or Damage by Pushing it with Your Finger.
- Check the Beam Direction of the Headlight (Low Beam) (Refer to GROUP 54A – Headlight Aiming).



ACB05589AD

Removal steps

- <<A>> >>A<<
<>
1. Stabilizer link connection
 2. Lower arm and trailing arm connection

Removal steps (Continued)

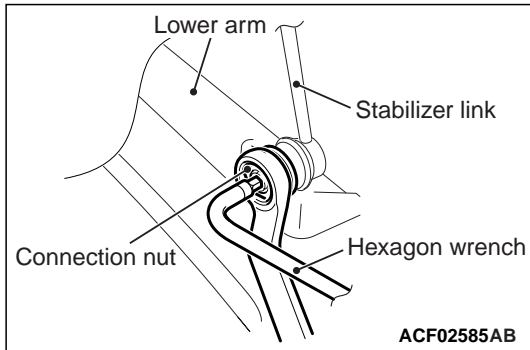
- <> <<C>> <Added>
<<D>> >>AA<<
3. Shock absorber and lower arm connection
 4. Shock absorber mounting nut
 5. Shock absorber assembly

REAR SUSPENSION SHOCK ABSORBER ASSEMBLY

REMOVAL SERVICE POINTS

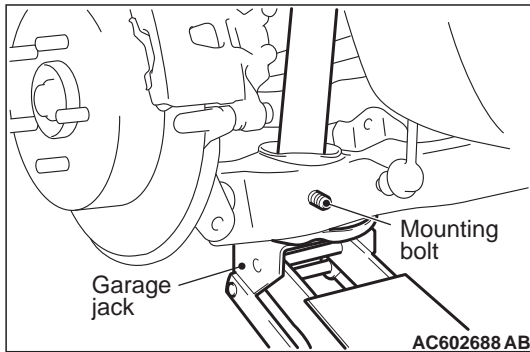
<<A>> STABILIZER LINK DISCONNECTION

Use a hexagon wrench to counterhold the stabilizer link as shown. Then use a wrench to remove the nut securing the stabilizer link to the lower arm.



<> LOWER ARM AND TRAILING ARM/SHOCK ABSORBER AND LOWER ARM DISCONNECTION

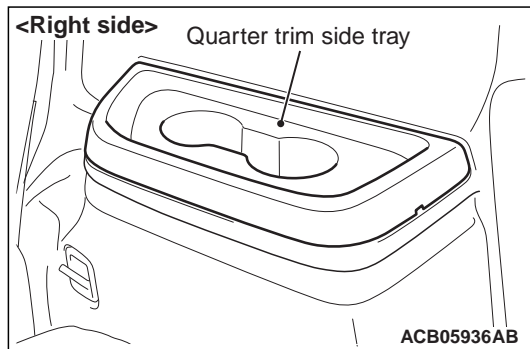
While jacking-up the lower arm with garage jack, remove the mounting bolts.



<<C>> SHOCK ABSORBER MOUNTING NUT REMOVAL

Remove the appropriate quarter trim side tray to remove the shock absorber mounting nut. <Right side>

On the left side, remove the quarter trim (Refer to GROUP 52A – Interior Trim). <Left side>



<<D>> SHOCK ABSORBER ASSEMBLY REMOVAL

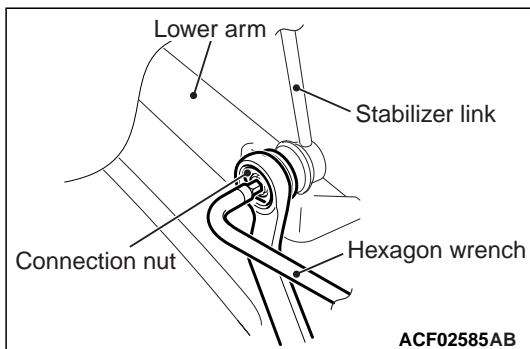
After having loosened the lower arm and rear suspension crossmember connection, remove the shock absorber assembly.

INSTALLATION SERVICE POINT

<Added> Attached sheet 14 (3/3)

>>A<< STABILIZER LINK CONNECTION

Use a hexagon wrench to counterhold the stabilizer link as shown. Then use a wrench to install the nut securing the stabilizer link to the lower arm.



>>AA<< SHOCK ABSORBER ASSEMBLY INSTALLATION

Before installing the shock absorber assembly, check for the following items. If there is any abnormality, replace the faulty part.

- Oil leakage, damage and deformation of the shock absorber
- Crack, deterioration and damage of the coil spring
- Crack of the spring upper pad, spring upper bracket assembly, bushing A and bushing B
- Damage and deformation of the bump rubber

REAR SUSPENSION SHOCK ABSORBER ASSEMBLY

<Deleted>

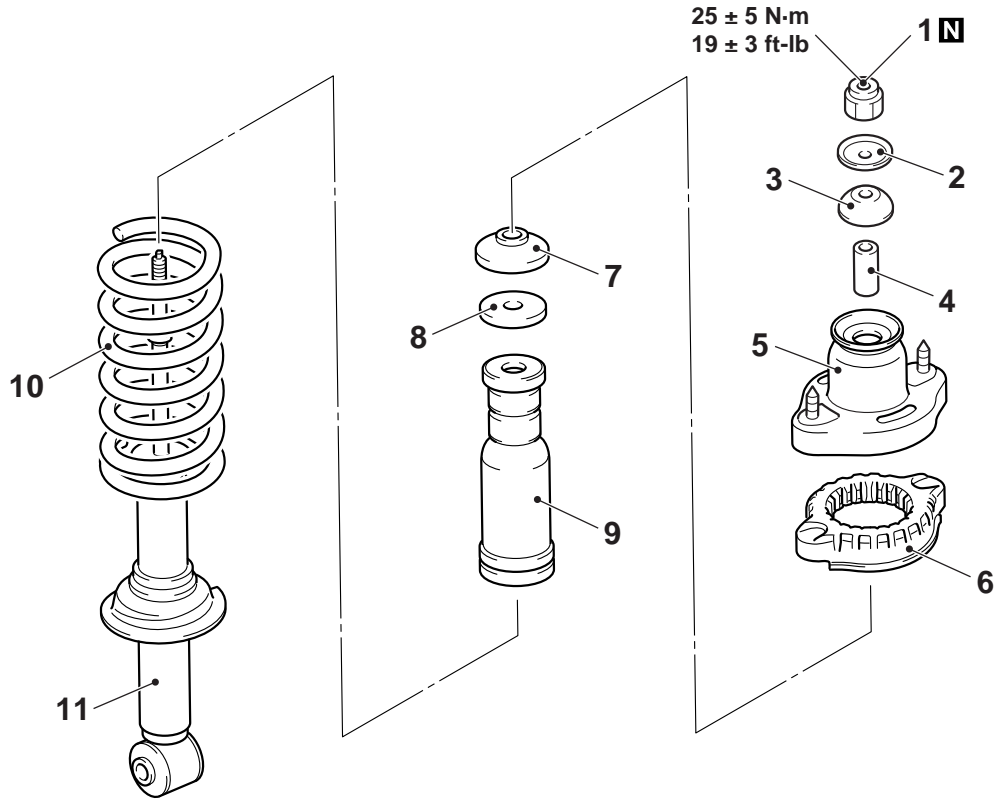
INSPECTION

M1341002600246

- Check the rubber parts for cracks and wear.
- Check the shock absorber for malfunctions, oil leakage, or abnormal noise.

DISASSEMBLY AND REASSEMBLY

M1341002700470



AC506862AB

- <<A>> >>B<<
- Disassembly steps**
1. Self-locking nut
 2. Washer
 3. Bushing B
 4. Collar
 5. Spring upper bracket assembly
 6. Spring upper pad

- >>A<<
- Disassembly steps (Continued)**
7. Bushing A
 8. Plate
 9. Bump rubber
 10. Coil spring
 11. Shock absorber
- <>

Required Special Tools:

- MB991793 Spring compressor
- MB991796 Attachment B
- MB991794 Upper plate
- MB991830 Fixture

**FRONT SUSPENSION
ON-VEHICLE SERVICE**

BALL JOINT DUST COVER CHECK

M1332013200169

LOWER ARM BALL JOINT DUST COVER CHECK

1. Using your fingers, press the dust cover to check for a crack or damage.
2. If the dust cover is cracked or damaged, replace the lower arm assembly.

NOTE: If the dust cover has a crack or damage, the ball joint could be damaged.

STABILIZER LINK BALL JOINT DUST COVER CHECK

1. Using your fingers, press the dust cover to check for a crack or damage.
2. If the dust cover has a crack or damage, replace the stabilizer link.

NOTE: If the dust cover has a crack or damage, the ball joint could be damaged.

<Added>

STRUT ASSEMBLY INSPECTION

M13320012A0049

Check for the following items. If there is any abnormality, replace the faulty part.

- Oil leakage, damage and deformation of the strut
- Crack, deterioration and damage of the coil spring
- Crack of the strut insulator assembly and upper spring pad
- Damage and deformation of the bump rubber

FRONT SUSPENSION
STRUT ASSEMBLY

STRUT ASSEMBLY

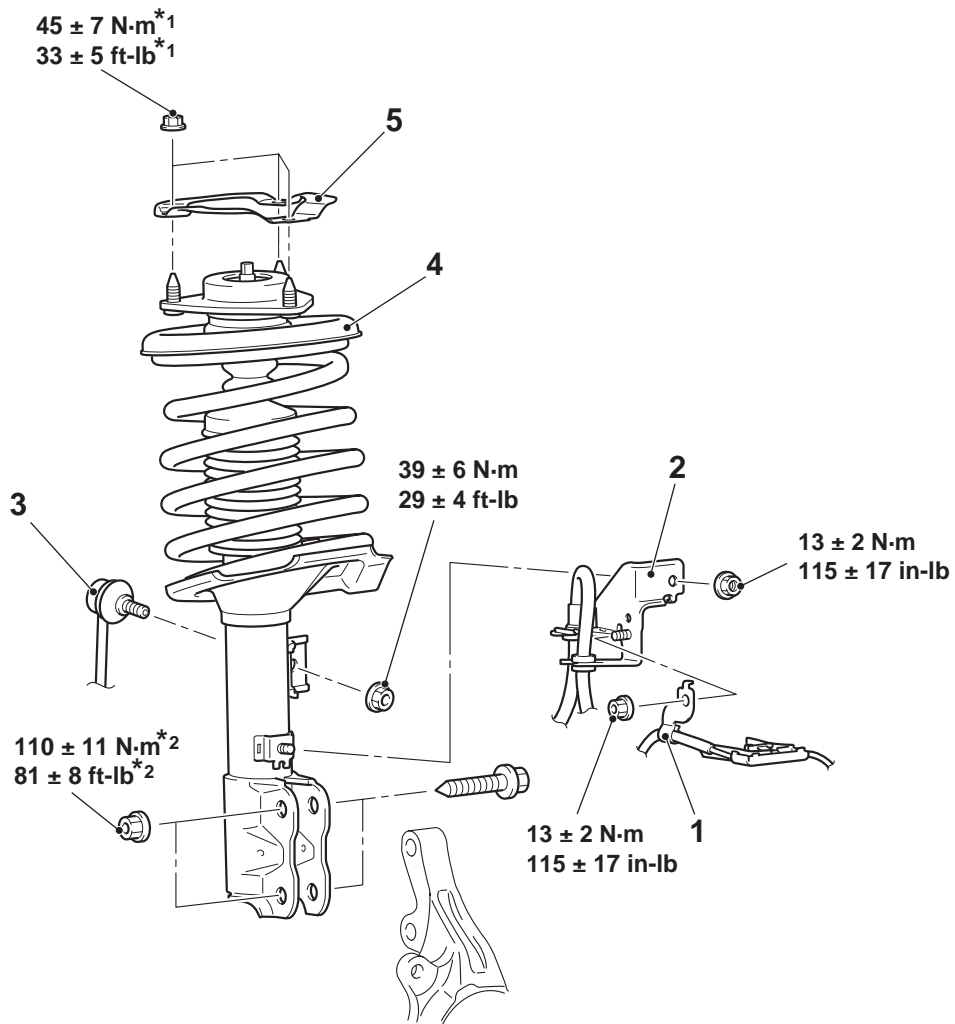
REMOVAL AND INSTALLATION

M1332001101458

CAUTION

- The parts indicated by *1 indicates parts which should be temporarily tightened, and then fully tightened with the vehicle standing on the ground and the curb weight condition.
- The parts indicated by *2 is the nuts with friction coefficient stabilizer. During removal, ensure there is no damage, clean dust and soiling from the bearing and thread surfaces, and tighten it to the specified torque.

Post-installation Operation
Front Wheel Alignment Check and Adjustment



AC905022AD

Removal steps

1. Wheel speed sensor clamp
2. Brake hose bracket
3. Stabilizer link and strut connection

<Added>

>>AA<<

Removal steps (Continued)

4. Strut assembly
5. Front suspension plate

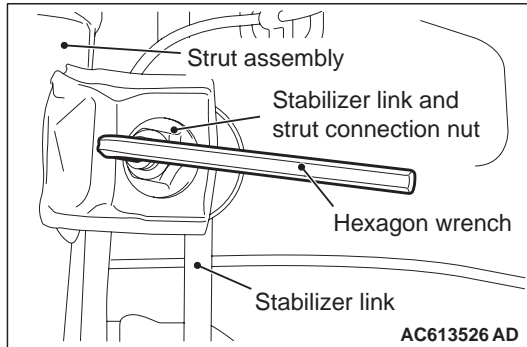
<<A>> >>A<<

FRONT SUSPENSION STRUT ASSEMBLY

REMOVAL SERVICE POINT

<<A>> STABILIZER LINK AND STRUT CONNECTION NUT REMOVAL

Use a hexagon wrench to remove the stabilizer link and strut connection nut as shown in the figure.



INSTALLATION SERVICE POINT

<Added>

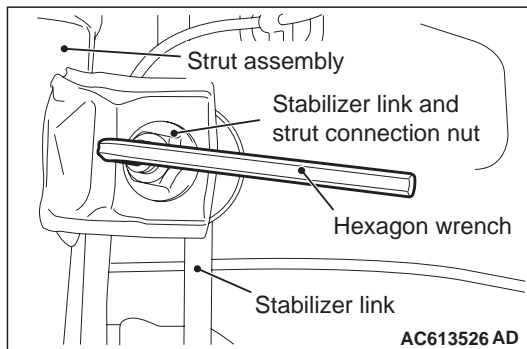
>>AA<< STRUT ASSEMBLY INSTALLATION

Before installing the strut assembly, check for the following items. If there is any abnormality, replace the faulty part.

- Oil leakage, damage and deformation of the strut
- Crack, deterioration and damage of the coil spring
- Crack of the strut insulator assembly and upper spring pad
- Damage and deformation of the bump rubber

>>A<< STABILIZER LINK AND STRUT CONNECTION NUT INSTALLATION

Use a hexagon wrench to install the stabilizer link and strut connection nut as shown in the figure.



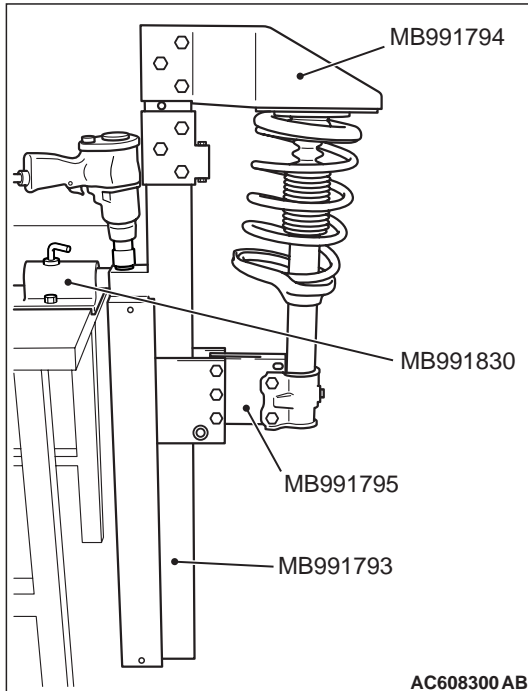
<Deleted>

INSPECTION

M1332001200582

- Check for oil leaks from the strut assembly.
- Check the strut assembly for damage or deformation.

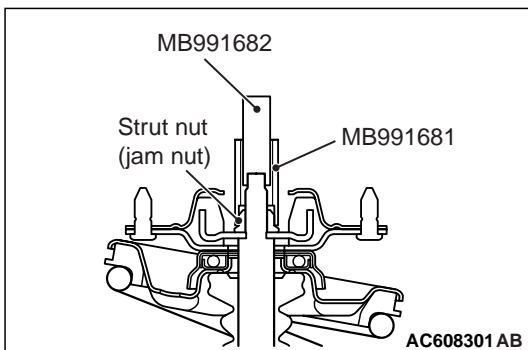
FRONT SUSPENSION STRUT ASSEMBLY



CAUTION

Be careful that the hand is not pinched by the coil spring when aligning the piston rod with the hole of upper insulator while compressing the coil spring.

- While passing the strut piston rod through the hole of upper insulator by hand slowly compress the coil spring by special tool: MB991793, MB991795, MB991794 and MB991830.



CAUTION

The locking nut for the piston rod inside the strut may be loose. Do not use the impact wrench to loosen the self-locking nut.

- Use special tools MB991681 and MB991682 to tighten the self-locking nut to the specified torque:

Tightening torque: 60 ± 9 N·m (44 ± 6 ft·lb)

<Deleted>

INSPECTION

M1332001400359

- Check the bearing for wear or rust.
- Check the rubber parts for damage or deterioration.
- Check the spring for deformation, deterioration or damage.
- Check the shock absorber for deformation.

REAR SUSPENSION CONTROL LINK, UPPER ARM AND LOWER ARM

STABILIZER LINK BALL JOINT DUST COVER INSPECTION

M1341019100083

1. Using your fingers, press the dust cover to check for a crack or damage.
2. If the dust cover has a crack or damage, replace the stabilizer link.

NOTE: If the dust cover has a crack or damage, the ball joint could be damaged.

<Added> Attached sheet 19 (2/2)

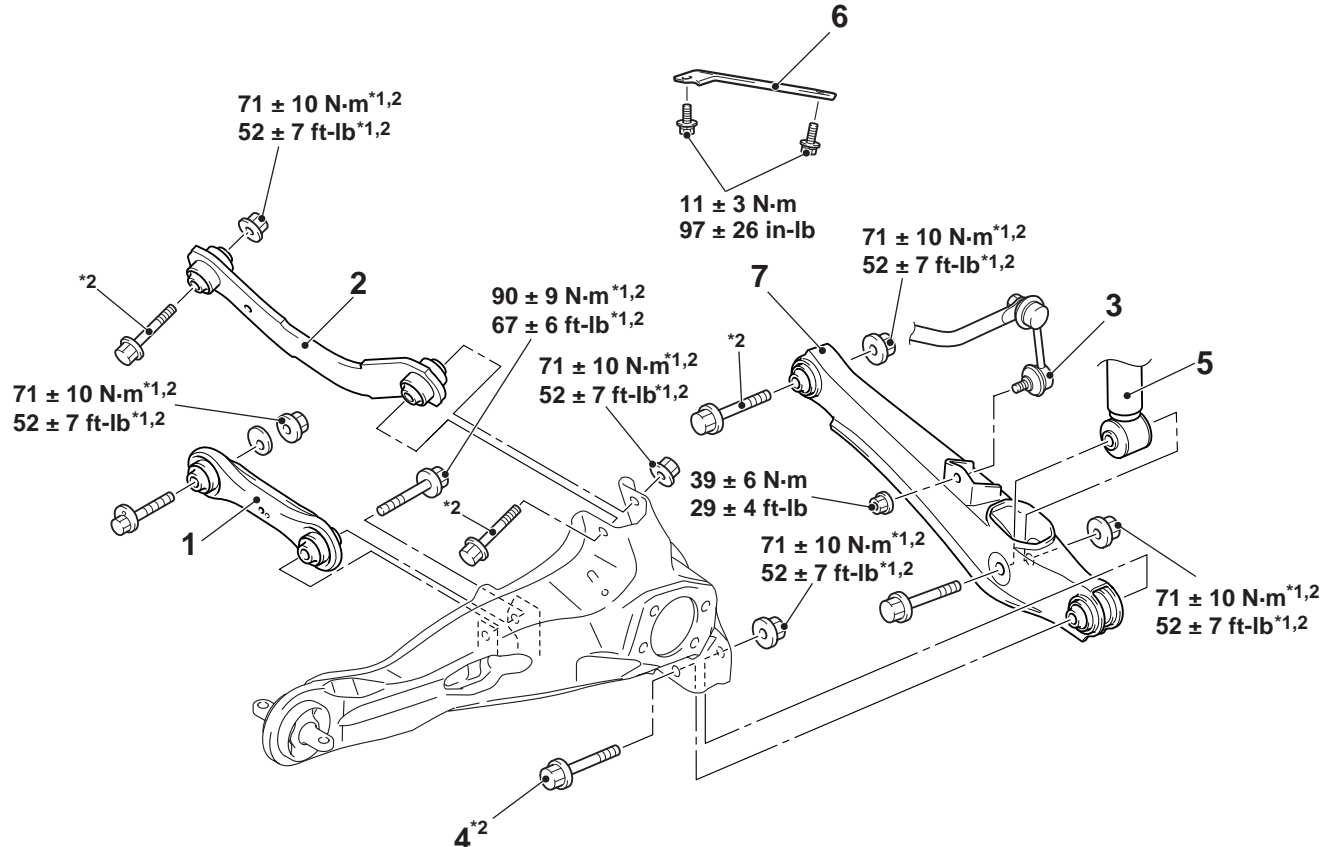
CONTROL LINK, UPPER ARM AND LOWER ARM REMOVAL AND INSTALLATION

M1341004800934

⚠ CAUTION

- The parts indicated by ^{*1} should be temporarily tightened, and then fully tightened with the vehicle standing on the ground and the curb weight condition.
- The parts indicated by ^{*2} are the bolts/nuts with friction coefficient stabilizer. In removal, ensure there is no damage, clean dust and soiling from the bearing and thread surfaces, and tighten them to the specified torque.

Post-installation operation
Wheel Alignment Check and Adjustment



AC904556AE

SHOCK ABSORBER ASSEMBLY INSPECTION

M13410026A0027

Check for the following items. If there is any abnormality, replace the faulty part.

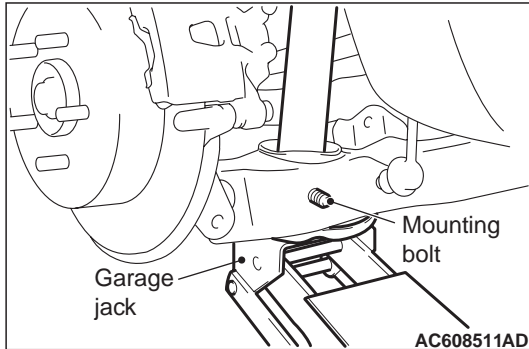
- Oil leakage, damage and deformation of the shock absorber
- Crack, deterioration and damage of the coil spring
- Crack of the spring upper pad, bushing A and bushing B
- Damage and deformation of the bump rubber

REAR SUSPENSION SHOCK ABSORBER ASSEMBLY

REMOVAL SERVICE POINT

<<A>> LOWER ARM AND TRAILING ARM/SHOCK ABSORBER AND LOWER ARM DISCONNECTION

While jacking-up the lower arm with the garage jack, remove the mounting bolts.

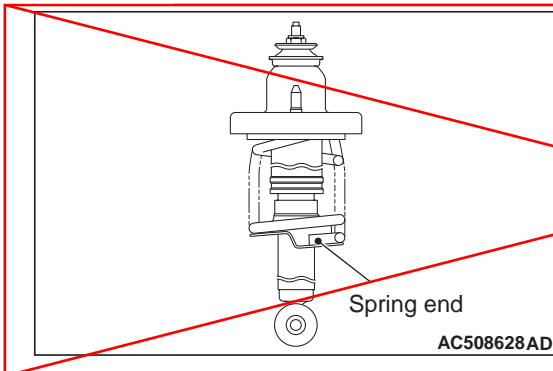


INSTALLATION SERVICE POINT

>>A<< SHOCK ABSORBER ASSEMBLY INSTALLATION

Install the shock absorber assembly so that the coil spring end faces the rear of the vehicle.

<Incorrect>



<Correct>

Before installing the shock absorber assembly, check for the following items. If there is any abnormality, replace the faulty part.

- Oil leakage, damage and deformation of the shock absorber
- Crack, deterioration and damage of the coil spring
- Crack of the spring upper pad, bushing A and bushing B
- Damage and deformation of the bump rubber

<Deleted>

INSPECTION

- Check the rubber parts for cracks and wear.
- Check the shock absorber for malfunctions, oil leakage, or abnormal noise.

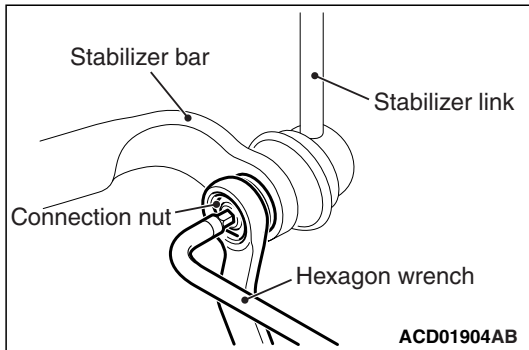
M1341002600291

REAR SUSPENSION SHOCK ABSORBER ASSEMBLY

REMOVAL SERVICE POINT

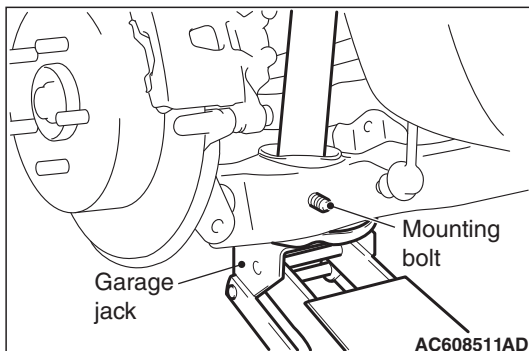
<<A>> STABILIZER LINK AND STABILIZER BAR CONNECTION NUT REMOVAL

Use a hexagon wrench to counterhold the stabilizer link as shown. Then use a wrench to remove the nut securing the stabilizer link to the stabilizer bar.



<> LOWER ARM AND TRAILING ARM/SHOCK ABSORBER AND LOWER ARM DISCONNECTION

While jacking-up the lower arm with the garage jack, remove the mounting bolts.

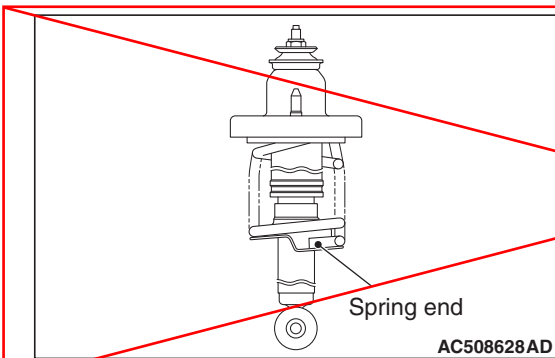


INSTALLATION SERVICE POINT

>>A<< SHOCK ABSORBER ASSEMBLY INSTAL- LATION

Install the shock absorber assembly so that the coil spring end faces the rear of the vehicle <LH>, or the coil spring end faces the front of the vehicle <RH>.

<Deleted>



Before installing the shock absorber assembly, check for the following items. If there is any abnormality, replace the faulty part.

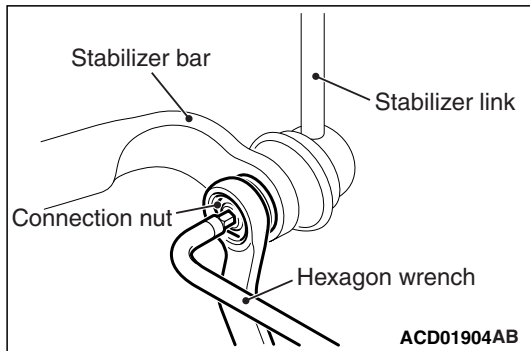
- Oil leakage, damage and deformation of the shock absorber
- Crack, deterioration and damage of the coil spring
- Crack of the spring upper pad, bushing A and bushing B
- Damage and deformation of the bump rubber

<Added>

REAR SUSPENSION SHOCK ABSORBER ASSEMBLY

>>B<< STABILIZER LINK AND STABILIZER BAR CONNECTION NUT INSTALLATION

Use a hexagon wrench to counterhold the stabilizer link as shown. Then use a wrench to install the nut securing the stabilizer link to the stabilizer bar.



<Deleted>

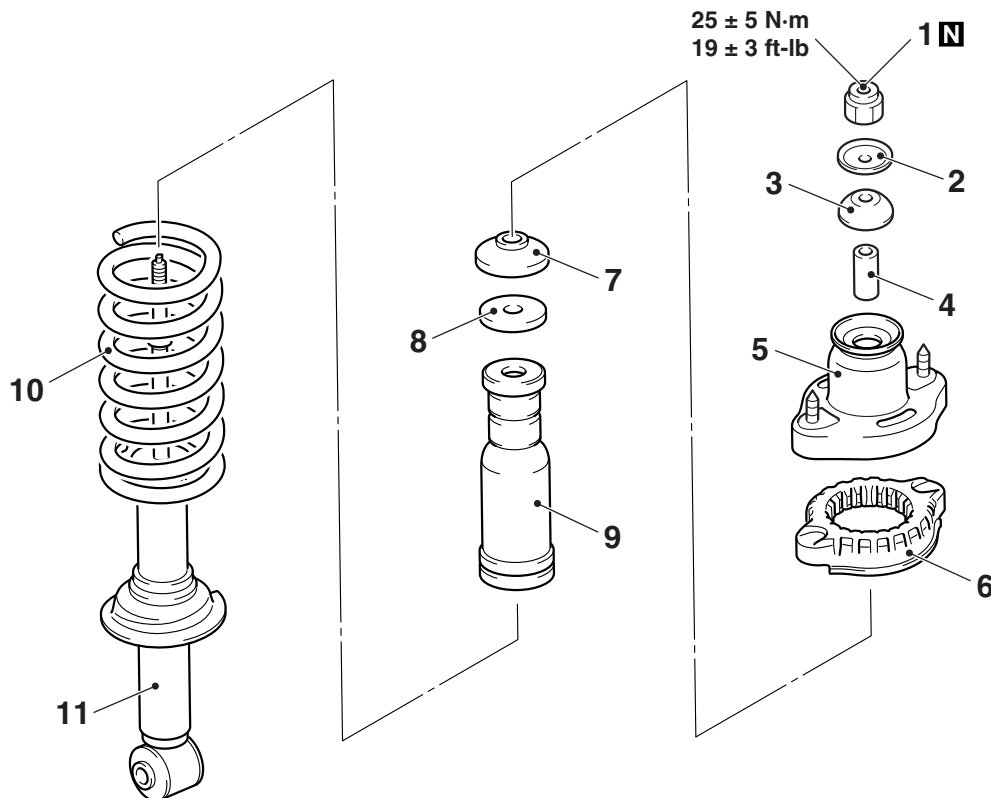
~~INSPECTION~~

M1341002600291

- Check the rubber parts for cracks and wear.
- Check the shock absorber for malfunctions, oil leakage, or abnormal noise.

DISASSEMBLY AND ASSEMBLY

M1341002700447



AC506862AB

- <<A>> >>B<<
- Disassembly steps**
1. Self-locking nut
 2. Washer
 3. Bushing B
 4. Collar
 5. Spring upper bracket assembly
 6. Spring upper pad

- Disassembly steps (Continued)**
7. Bushing A
 8. Plate
 9. Bump rubber
- >>A<<
10. Coil spring
 11. Shock absorber

**REAR SUSPENSION
SHOCK ABSORBER ASSEMBLY**

SHOCK ABSORBER ASSEMBLY

REMOVAL AND INSTALLATION

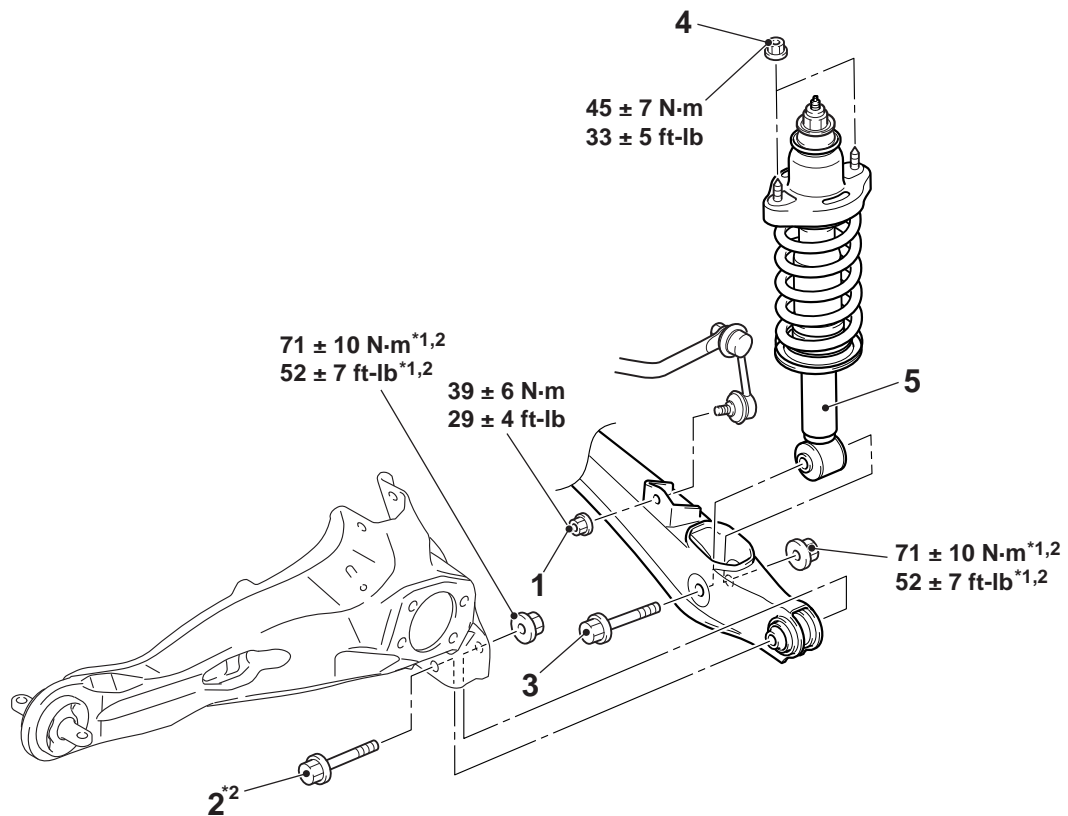
M1341002500926

CAUTION

- The parts indicated by ^{*1} should be temporarily tightened, and then fully tightened with the vehicle standing on the ground at curb weight.
- The parts indicated by ^{*2} are the bolts/nuts with friction coefficient stabilizer. Prior to reinstallation, ensure there is no damage, clean dust and soiling from the bearing and thread surfaces, and tighten them to the specified torque.

Pre-removal and Post-installation operation

- Cargo Floor Box (LH/RH) Removal and Installation (Refer to GROUP 52A – Trim).
- Rear Speaker Box Assembly Removal and Installation (RH) (Refer to GROUP 54A – Speaker).



AC606837AO

- <<A>> >>A<< **Removal steps**
1. Stabilizer link connection
 2. Lower arm and trailing arm connection

- <> **Removal steps (Continued)**
3. Shock absorber and lower arm connection
 4. Shock absorber mounting nut
 5. Shock absorber assembly

>>AA<<

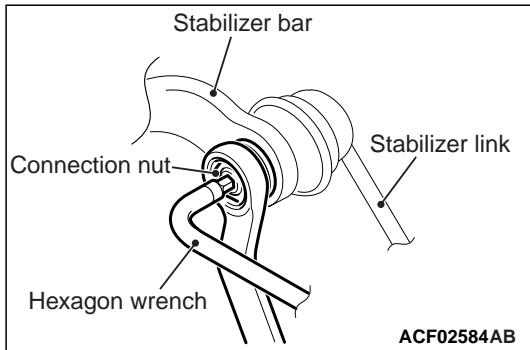
<Added>

REAR SUSPENSION SHOCK ABSORBER ASSEMBLY

REMOVAL SERVICE POINT

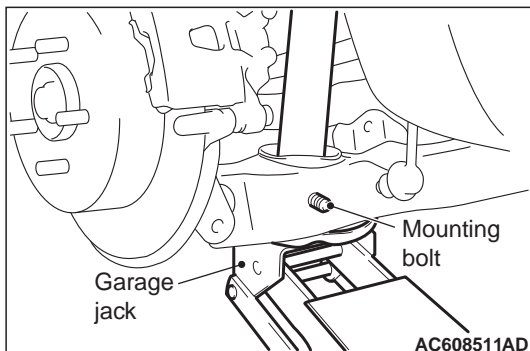
<<A>> STABILIZER LINK AND STABILIZER BAR CONNECTION NUT REMOVAL

Use a hexagon wrench to counterhold the stabilizer link as shown. Then use a wrench to remove the nut securing the stabilizer link to the stabilizer bar.



<> LOWER ARM AND TRAILING ARM/SHOCK ABSORBER AND LOWER ARM DISCONNECTION

While jacking-up the lower arm with the garage jack, remove the mounting bolts.

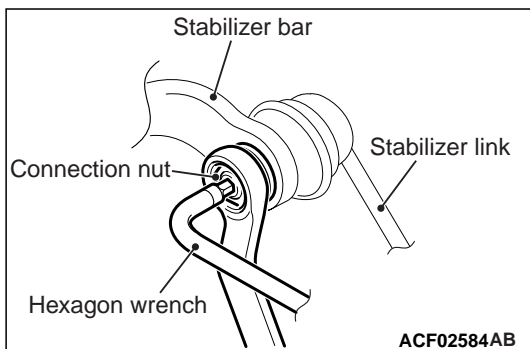


INSTALLATION SERVICE POINT

<Added> Attached sheet 23 (3/3)

>>A<< STABILIZER LINK AND STABILIZER BAR CONNECTION NUT INSTALLATION

Use a hexagon wrench to counterhold the stabilizer link as shown. Then use a wrench to install the nut securing the stabilizer link to the stabilizer bar.



<Deleted>

~~INSPECTION~~

M1341002600291

- Check the rubber parts for cracks and wear.
- Check the shock absorber for malfunctions, oil leakage, or abnormal noise.

>>A<< SHOCK ABSORBER ASSEMBLY INSTALLATION

Before installing the shock absorber assembly, check for the following items. If there is any abnormality, replace the faulty part.

- Oil leakage, damage and deformation of the shock absorber
- Crack, deterioration and damage of the coil spring
- Crack of the spring upper pad, bushing A and bushing B
- Damage and deformation of the bump rubber

**FRONT SUSPENSION
ON-VEHICLE SERVICE**

BALL JOINT DUST COVER CHECK

M1332013200181

LOWER ARM BALL JOINT DUST COVER CHECK

1. Using your fingers, press the dust cover to check for a crack or damage.
2. If the dust cover has any crack or damage, replace the lower arm assembly

NOTE: If the dust cover has a crack or damage, the ball joint could be damaged.

STABILIZER LINK BALL JOINT DUST COVER CHECK

1. Check the dust cover for cracks or damage by pushing it with your finger.
2. If the dust cover is cracked or damaged, replace the stabilizer link

NOTE: If the dust cover has a crack or damage, the ball joint could be damage.

<Added>

STRUT ASSEMBLY INSPECTION

Check for the following items. If there is any abnormality, replace the faulty part.

- Oil leakage, damage and deformation of the strut
- Crack, deterioration and damage of the coil spring
- Crack of the strut insulator assembly, upper spring pad and lower spring pad
- Damage and deformation of the bump stopper

FRONT SUSPENSION
STRUT ASSEMBLY

STRUT ASSEMBLY

REMOVAL AND INSTALLATION

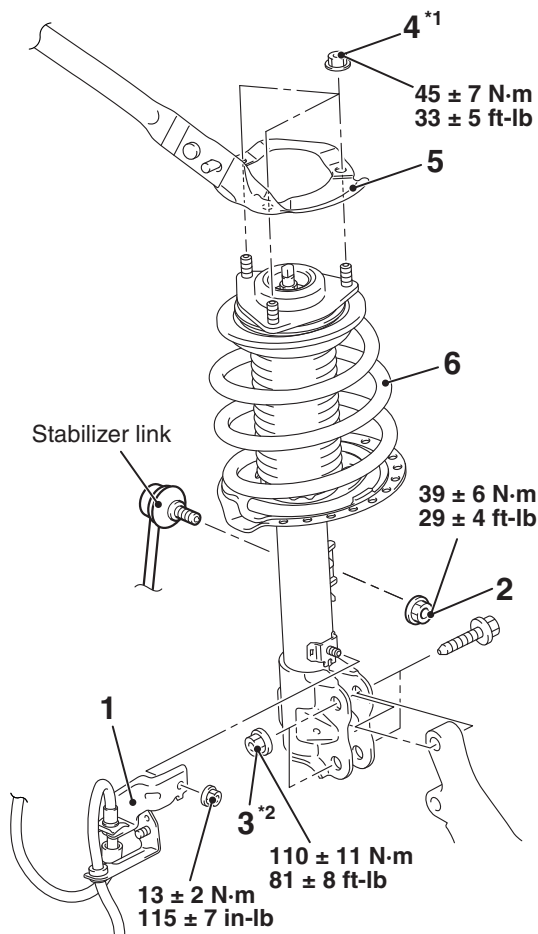
M1332001102064

CAUTION

- The parts indicated by *1 indicates parts which should be temporarily tightened, and then fully tightened with the vehicle standing on the ground at curb weight.
- The parts indicated by *2 are the nuts with friction coefficient stabilizer. Prior to reinstallation, ensure there is no damage, clean dust and soiling from the bearing and thread surfaces, and tighten them to the specified torque.

Post-installation Operation

- Front Wheel Alignment Check and Adjustment



ACH05318AB

Removal steps

- <<A>> >>A<<
1. Brake hose bracket
 2. Stabilizer link and strut connection nut
 3. Knuckle and strut connection

Removal steps (Continued)

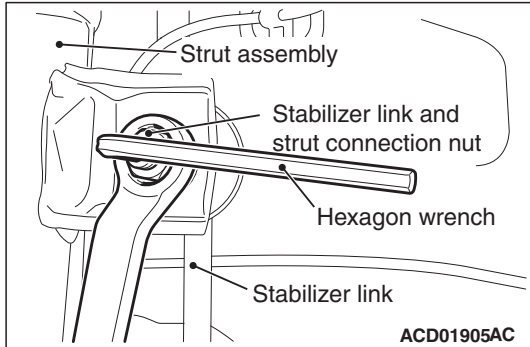
4. Strut mounting nut
5. Front suspension strut stiffener plate
6. **<Added> >>AA<<** Strut assembly

FRONT SUSPENSION STRUT ASSEMBLY

REMOVAL SERVICE POINT

<<A>> STABILIZER LINK AND STRUT CONNECTION NUT REMOVAL

Use a hexagon wrench to counterhold the stabilizer link as shown. Then use a wrench to remove the nut securing the stabilizer link to the strut.



INSTALLATION SERVICE POINT

<Added>

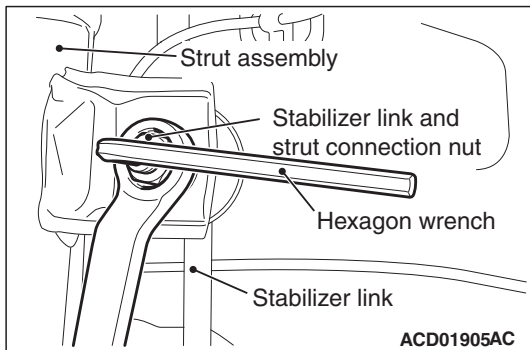
>>AA<< STRUT ASSEMBLY INSTALLATION

Before installing the strut assembly, check for the following items. If there is any abnormality, replace the faulty part.

- Oil leakage, damage and deformation of the strut
- Crack, deterioration and damage of the coil spring
- Crack of the strut insulator assembly, upper spring pad and lower spring pad
- Damage and deformation of the bump stopper

>>A<< STABILIZER LINK AND STRUT CONNECTION NUT INSTALLATION

Use a hexagon wrench to counterhold the stabilizer link as shown. Then use a wrench to install the nut securing the stabilizer link to the strut.



<Deleted>

~~INSPECTION~~

M1332001200407

- Check for oil leaks from the strut assembly.
- Check the strut assembly for damage or deformation.

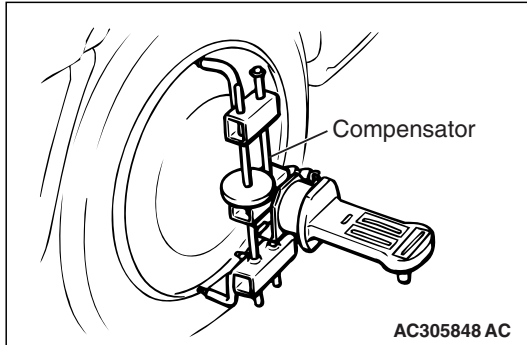
REAR SUSPENSION ON-VEHICLE SERVICE

CAMBER

Standard value: $-0^{\circ}40' \pm 0^{\circ}45'$

NOTE:

- Difference between right and left wheels must be $0^{\circ}30'$ or less.
- The camber is pre-adjusted at factory and is not adjustable.
- As for vehicles with aluminum wheel, use a compensator to measure the camber and caster.



STABILIZER LINK BALL JOINT DUST COVER INSPECTION

M1341019100027

1. Using your fingers, press the dust cover to check for a crack or damage.
2. If the dust cover has a crack or damage, replace the stabilizer link.

NOTE: If the dust cover has a crack or damage, the ball joint could be damaged.

<Added>

SHOCK ABSORBER ASSEMBLY INSPECTION

Check for the following items. If there is any abnormality, replace the faulty part.

- Oil leakage, damage and deformation of the shock absorber
- Crack, deterioration and damage of the coil spring
- Crack of the spring upper pad, spring upper bracket assembly, bushing A and bushing B
- Damage and deformation of the bump rubber

REAR SUSPENSION
SHOCK ABSORBER ASSEMBLY

SHOCK ABSORBER ASSEMBLY

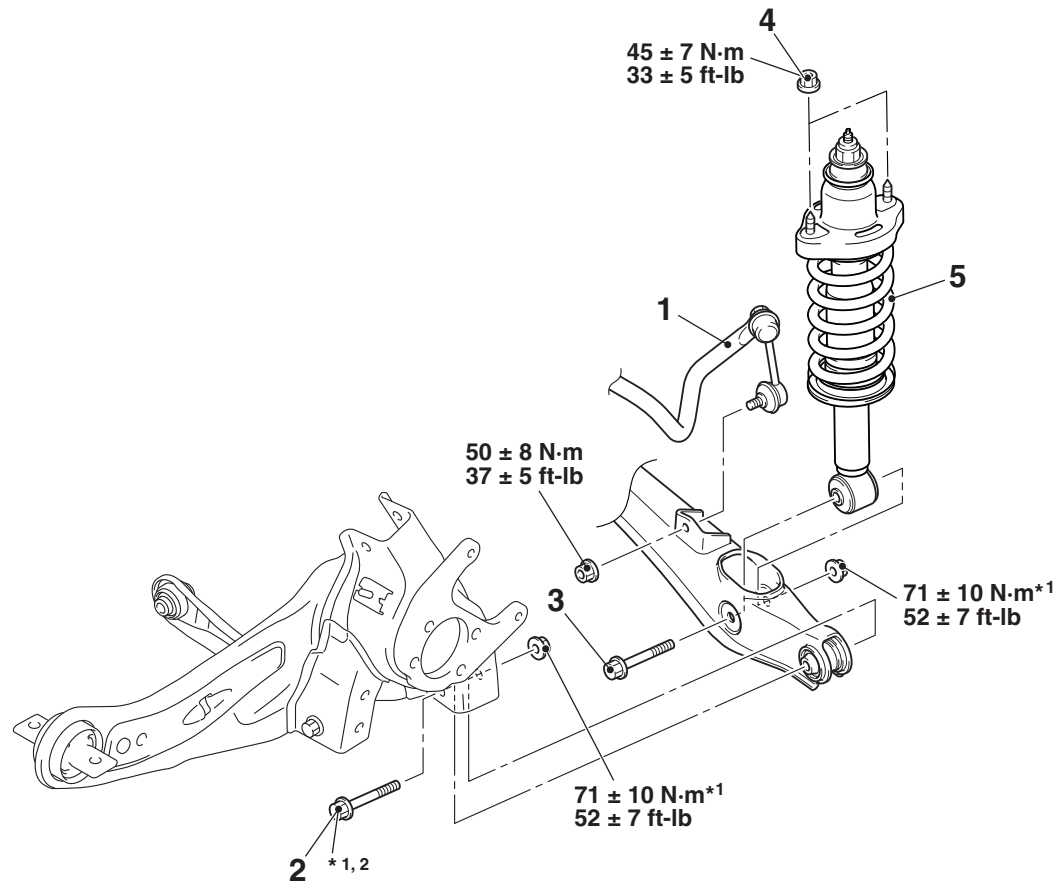
REMOVAL AND INSTALLATION

M1341002501145

CAUTION

- The parts indicated by *1 should be temporarily tightened, and then fully tightened with the vehicle standing on the ground and the curb weight condition.
- *2 indicates a bolt with stabilizer for coefficient of friction. When you tighten it, note the following:
 - Check the bolt for any damage.
 - Clean the seating and thread of the bolt.
 - Observe the specified torque.

<p>Pre-removal Operation Cargo Floor Box Removal (Refer to GROUP 52A – Interior Trim).</p>	<p>Post-installation Operation</p> <ul style="list-style-type: none"> • Cargo Floor Box Installation (Refer to GROUP 52A – Interior Trim). • Check the Dust Cover for Cracks or Damage by Pushing it with Your Finger. • Check the Beam Direction of the Headlight (Low Beam) (Refer to GROUP 54A – Headlight Aiming).
---	--



ACH05341AB

- <<A>> >>A<<
<>
- Removal steps**
1. Stabilizer link connection
 2. Lower arm and trailing arm connection

- <>
<<C>>
<<D>>
- Removal steps (Continued)**
3. Shock absorber and lower arm connection
 4. Shock absorber mounting nut
 5. Shock absorber assembly

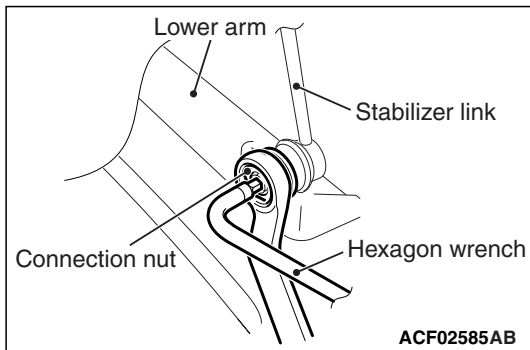
>>AA<<
<Added>

REAR SUSPENSION SHOCK ABSORBER ASSEMBLY

REMOVAL SERVICE POINTS

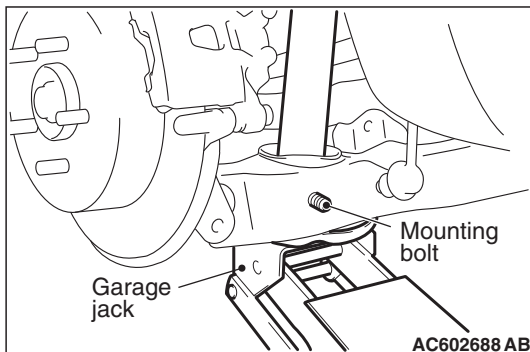
<<A>> STABILIZER LINK DISCONNECTION

Use a hexagon wrench to counterhold the stabilizer link as shown. Then use a wrench to remove the nut securing the stabilizer link to the lower arm.



<> LOWER ARM AND TRAILING ARM/SHOCK ABSORBER AND LOWER ARM DISCONNECTION

While jacking-up the lower arm with garage jack, remove the mounting bolts.



<<C>> SHOCK ABSORBER MOUNTING NUT REMOVAL

Remove the cargo floor box to remove the shock absorber mounting nut (Refer to GROUP 52A – Interior Trim).

<<D>> SHOCK ABSORBER ASSEMBLY REMOVAL

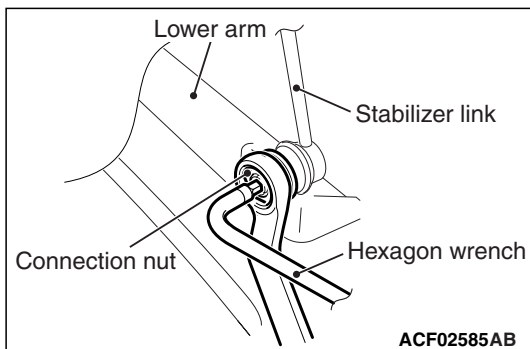
After having loosened the lower arm and rear suspension crossmember connection, remove the shock absorber assembly.

INSTALLATION SERVICE POINT

<Added> Attached sheet 27 (3/3)

>>A<< STABILIZER LINK CONNECTION

Use a hexagon wrench to counterhold the stabilizer link as shown. Then use a wrench to install the nut securing the stabilizer link to the lower arm.



<Deleted>

INSPECTION

M1341002600246

- Check the rubber parts for cracks and wear.
- Check the shock absorber for malfunctions, oil leakage, or abnormal noise.

**>>AA<< SHOCK ABSORBER ASSEMBLY
INSTALLATION**

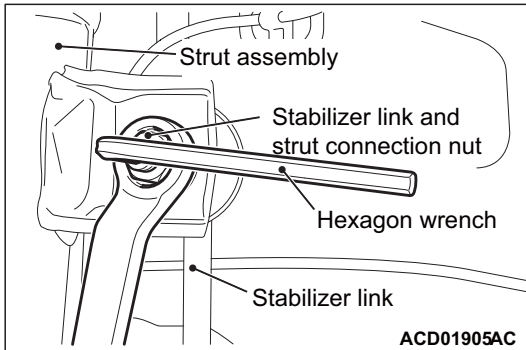
Before installing the shock absorber assembly, check for the following items. If there is any abnormality, replace the faulty part.

- Oil leakage, damage and deformation of the shock absorber
- Crack, deterioration and damage of the coil spring
- Crack of the spring upper pad, spring upper bracket assembly, bushing A and bushing B
- Damage and deformation of the bump rubber

FRONT SUSPENSION STRUT ASSEMBLY

REMOVAL SERVICE POINTS <<A>> STABILIZER LINK AND STRUT CONNECTION NUT REMOVAL

Use a hexagon wrench to counterhold the stabilizer link as shown. Then use a wrench to remove the nut securing the stabilizer link to the strut.

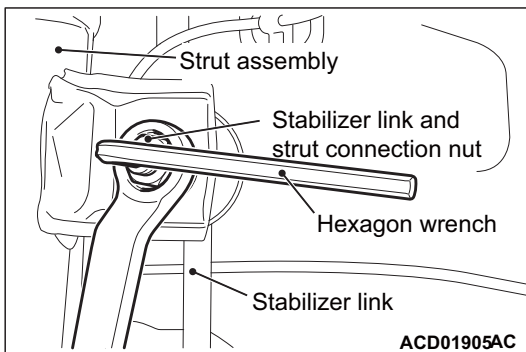


INSTALLATION SERVICE POINTS >>A<< STRUT ASSEMBLY INSTALLATION

<Incorrect> Check whether there is an abnormality in the strut assembly before installing it.

>>B<< STABILIZER LINK AND STRUT CONNECTION NUT INSTALLATION

Use a hexagon wrench to counterhold the stabilizer link as shown. Then use a wrench to install the nut securing the stabilizer link to the strut.



<Correct> Before installing the strut assembly, check for the following items. If there is any abnormality, replace the faulty part.

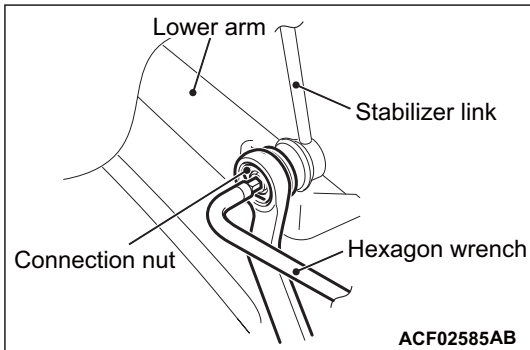
- Oil leakage, damage and deformation of the strut
- Crack, deterioration and damage of the coil spring
- Crack of the strut insulator assembly, upper spring pad and lower spring pad
- Damage and deformation of the bump stopper

REAR SUSPENSION SHOCK ABSORBER ASSEMBLY

REMOVAL SERVICE POINTS

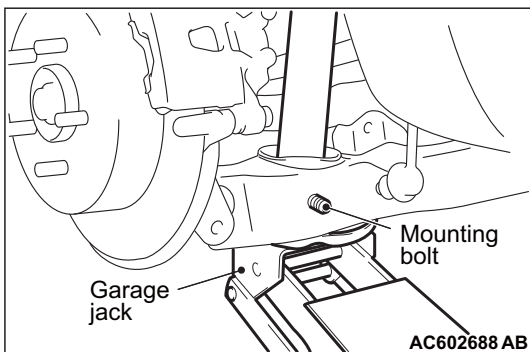
<<A>> STABILIZER LINK DISCONNECTION

Use a hexagon wrench to counterhold the stabilizer link as shown. Then use a wrench to remove the nut securing the stabilizer link to the lower arm.



<> LOWER ARM AND TRAILING ARM/SHOCK ABSORBER AND LOWER ARM DISCONNECTION

While jacking-up the lower arm with garage jack, remove the mounting bolts.



<<C>> SHOCK ABSORBER MOUNTING NUT REMOVAL

Remove the cargo floor box to remove the shock absorber mounting nut (Refer to GROUP 52A - Interior Trim).

<<D>> SHOCK ABSORBER ASSEMBLY REMOVAL

After having loosened the lower arm and rear suspension crossmember connection, remove the shock absorber assembly.

INSTALLATION SERVICE POINTS

>>A<< SHOCK ABSORBER ASSEMBLY INSTALLATION

~~<Incorrect> Check whether there is an abnormality in the shock absorber assembly before installing it.~~

<Correct>

Before installing the shock absorber assembly, check for the following items. If there is any abnormality, replace the faulty part.

- Oil leakage, damage and deformation of the shock absorber
- Crack, deterioration and damage of the coil spring
- Crack of the spring upper pad, spring upper bracket assembly, bushing A and bushing B
- Damage and deformation of the bump rubber