



Technical Service Bulletin

SUBJECT: ADDITION OF TORSION AXLE ARM ASSEMBLY REMOVAL AND INSTALLATION PROCEDURES – SERVICE MANUAL REVISION		No: TSB-23-34-001	
		DATE: January 2023	
		MODEL: 2017 Mirage G4	
CIRCULATE TO:	<input type="checkbox"/> GENERAL MANAGER	<input checked="" type="checkbox"/> PARTS MANAGER	<input checked="" type="checkbox"/> TECHNICIAN
<input checked="" type="checkbox"/> SERVICE ADVISOR	<input checked="" type="checkbox"/> SERVICE MANAGER	<input checked="" type="checkbox"/> WARRANTY PROCESSOR	<input type="checkbox"/> SALES MANAGER

PURPOSE

This TSB provides the addition of Torsion Axle Arm Assembly Removal and Installation Procedures.

AFFECTED VEHICLES

- 2017 Mirage G4

AFFECTED SERVICE MANUAL

- 2017 Mirage G4 Service Manual, Group 34-Rear Suspension

PROCEDURE

Please use the chart below and add the indicated pages to the affected Service Manual, Group 34-Rear Suspension - Torsion Axle Arm Assembly.

Applicable manual	Pub. No.	Applicable Title	Content
2017 MIRAGE G4 SERVICE MANUAL	MSCD-018B-2017	TORSION AXLE ARM ASSEMBLY	Attached sheet 1



Copyright 2023, Mitsubishi Motors North America, Inc.

The information contained in this bulletin is subject to change. For the latest version of this document, go to the Mitsubishi Dealer Link, MEDIC, or the Mitsubishi Service Information website (www.mitsubishitechinfo.com).

TORSION AXLE ARM ASSEMBLY

REMOVAL AND INSTALLATION

M1341016500383

CAUTION

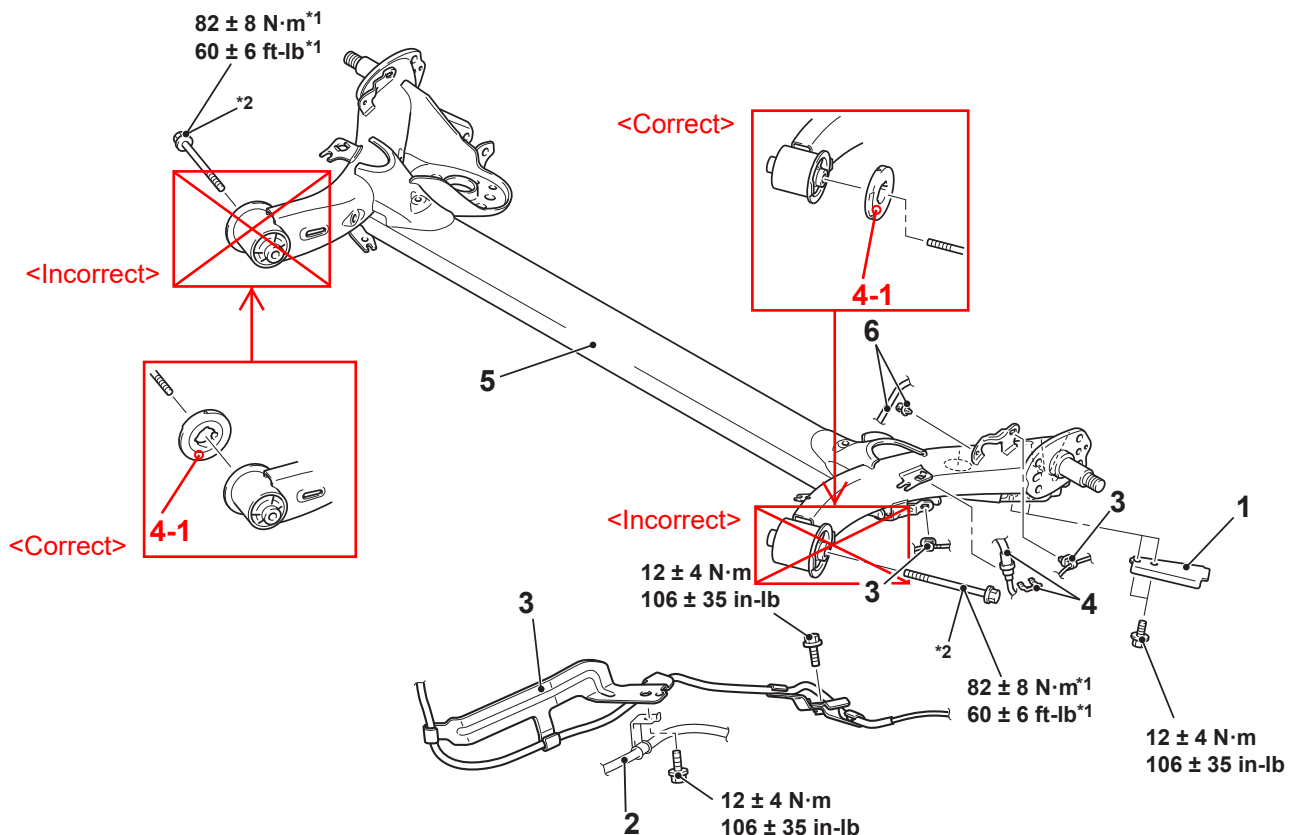
- The parts indicated by *¹ should be temporarily tightened, and then fully tightened with the vehicle standing on the ground at curb weight.
- The parts indicated by *² are the bolts with friction coefficient stabilizer. Prior to reinstallation, ensure there is no damage, clean dust and soiling from the bearing and thread surfaces, and tighten them to the specified torque.

Pre-removal Operation

- Backing Plate Removal (Refer to GROUP 35A, Rear Drum Brake P.35A-37).
- Shock Absorber and Coil Spring Removal (Refer to P.34-6).

Post-installation Operation

- Shock Absorber and Coil Spring Installation (Refer to P.34-6).
- Backing Plate Installation (Refer to GROUP 35A, Rear Drum Brake P.35A-37).
- Parking Brake Pedal Stroke Adjustment (Refer to GROUP 36, On-vehicle Service – Parking Brake Pedal Stroke Check and Adjustment P.36-6).



ACG00528AB

Removal steps

1. Plate
2. Parking brake cable (Refer to GROUP 36, Parking Brake Cable Removal and Installation P.36-9)

<Added>

>>A<< 4-1. Stopper >>

Removal steps (Continued)

3. Rear wheel speed sensor (Refer to GROUP 35C, Wheel Speed Sensor Removal and Installation P.35C-149)
4. Brake hose and clamp
5. Torsion axle arm assembly
6. Brake tube and clip

<Added>

Attached sheet 3 (2/2)

INSPECTION

M1341015500216

- Check the rubber parts for cracks and wear.
- Check the shock absorber for malfunction, oil leakage, or abnormal noise.

REAR SUSPENSION TORSION AXLE ARM ASSEMBLY

INSTALLATION SERVICE POINT

>>A<< STOPPER INSTALLATION

Install the stopper so that the notch faces the front of the vehicle and the triangle mark faces the outside of the vehicle as shown in the illustration.

