



FIELD SERVICE CAMPAIGN – 22124

10 January 2023

SUBJECT:

Air Compressor

MODELS INVOLVED:

International® CV™ Series trucks

DEFECT DESCRIPTION:

Certain International® CV™ Series trucks may have an air compressor assembled with an incorrect coolant line fitting that could result in coolant leaks.

ELIGIBILITY:

This procedure applies ONLY to vehicles marked in the International® Service PortalSM with FSC 22124. Also complete any other open campaigns listed on the Service Portal at this time.

TOOLS REQUIRED:

No special tools required

PARTS REQUIRED:

Part Number	Description	Quantity
4097989C93	COMPRESSOR, AIR, YOOSUNG 168CC TWIN CYLINDER WITH CLUTCH	1 (if required)
476074C1	Nut, Battery Terminal 3/8-inch UNC (One Time Use)	1 (if required)

Table 1 Parts Information

WORK INSTRUCTIONS

GOVERNMENT REGULATION: Engine fluid (oil, fuel, and coolant) may be a hazard to human health and the environment. Handle all fluid and other contaminated materials (such as filters and rags) in accordance with applicable regulations. Recycle or dispose of engine fluids, filters, and other contaminated materials according to applicable regulations.

WARNING! To prevent personal injury and / or death, or damage to property, allow engine / vehicle components to cool before servicing.

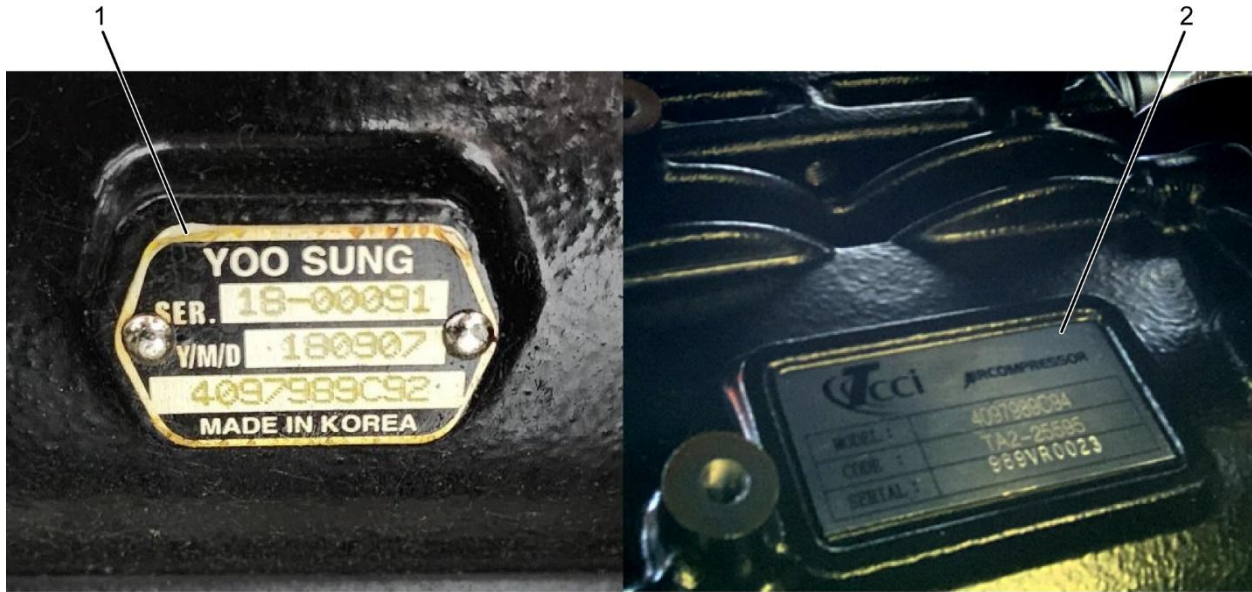
WARNING! To prevent personal injury and / or death, or damage to property, park vehicle on hard flat surface, turn the key OFF, set the parking brake, and install wheel chocks to prevent the vehicle from moving in both directions.

WARNING! To prevent personal injury and / or death, always wear safe eye protection when performing vehicle maintenance.

WARNING! To prevent personal injury and / or death, or damage to property, keep flames or sparks away from vehicle and do not smoke while servicing the vehicle's batteries. Batteries expel explosive gases.

WARNING! To prevent personal injury and / or death, or damage to property, remove the ground cable from the negative terminal of the battery before disconnecting any electrical components. Always connect the ground cable last.

1. Park vehicle on a level surface.
2. Shift transmission into Park or Neutral and set parking brake.
3. Turn ignition to Key OFF position.
4. Install wheel chocks.
5. Unlatch and open hood.
6. Remove front compartment splash shield at passenger-side frame. Refer to appropriate service manual for detailed instructions.



0000476361

Figure 1. Correct and Incorrect Air Compressor

1. Correct Yoo Sung air compressor
 2. Incorrect TCCi air compressor
7. Inspect air compressor identification plate for incorrect air compressor.
 - a. If vehicle has correct YOO SUNG air compressor (Figure 1, Item 1) installed, no action is required. Go to Step 15.
 - b. If vehicle has incorrect TCCi air compressor (Figure 1, Item 2) installed, continue with Step 8.
 8. Disconnect and isolate negative battery cable on main vehicle battery. Discard battery terminal nut.
 9. Remove incorrect air compressor. Refer to appropriate service manual for detailed instructions.
 10. Install correct air compressor. Refer to appropriate service manual for detailed instructions.
 11. Using a wire brush, electronic contact cleaner, and compressed shop air, clean negative battery terminal components.
 12. Apply BLUE dielectric grease to battery terminal stud, negative battery cable ring terminal, and threads of new battery stud nut.

13. Using new battery stud nut, reconnect negative battery cable to negative terminal on main vehicle battery and install new battery terminal nut.
14. Using torque wrench, tighten battery stud nut to 12 - 15 lb-ft (16 - 20 N•m).
15. Install front compartment splash shield at passenger-side frame. Refer to appropriate service manual for detailed instructions.
16. Close and latch hood.
17. Remove wheel chocks.

LABOR INFORMATION

Operation number must appear on all claims.

Operation Number	Description	Time
A40-22124-1	Inspect Air Compressor; replacement not required	0.3 hr
A40-22124-2	Inspect and Replace Air Compressor	3.3 hrs

Table 2 Labor Information

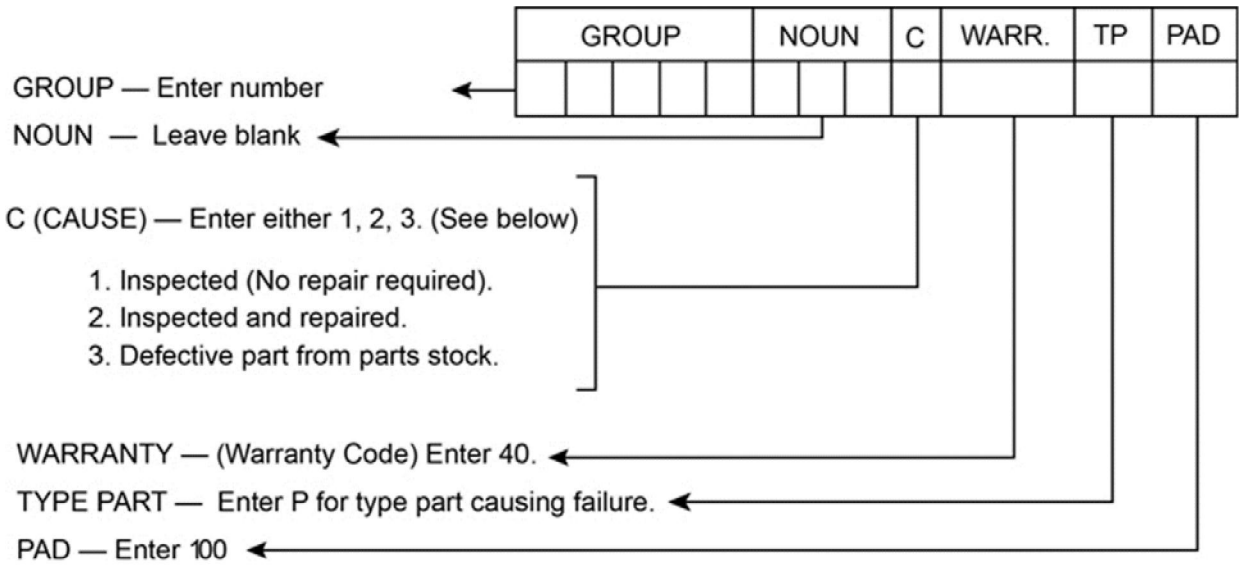
WARRANTY CLAIMS

Warranty claim expense is to be charged to Warranty. Claims are to be submitted in the normal manner, making reference to Field Service Campaign 22124.

Section 7 of the Warranty Policy and Procedures Manual contains further information related to the submission and processing of AFC / Recall claims.

As with all claim submissions, items acquired locally must be submitted in the “Other Charges” tab. The cost of any bulk items (such as a bag of cable tie straps, roll of wire, barrel of oil, or tube of silicone) should be prorated for the cost of the individual pieces / amount used during each repair.

To make sure that this important improvement is made in a timely manner, all claims for 22124 activity must be submitted by 10 January 2024 or within the normal warranty period for the component, if after 10 January 2024.



0000047910