



GENESIS

## Technical Service Bulletin

GROUP

CAMPAIGN

NUMBER

23-01-001G

DATE

JANUARY, 2023

MODEL(S)

GV70 (JK1)

SUBJECT:

SIDE SILL BODY PANELS INSPECTION AND REPAIR  
(SERVICE CAMPAIGN T23G)

### ★ IMPORTANT

Dealers must perform this service campaign on all affected vehicles prior to customer retail delivery and whenever an affected vehicle is in the shop for any maintenance or repair.

Access the "Vehicle Information" screen via WEBDCS to identify open campaigns.

**Description:** Certain 2022MY GV70 (JK1) vehicles may exhibit cracks on the side sill body panels. This bulletin outlines the procedures to inspect the side sill body panels and, if necessary, repair the cracks.




STUI



This TSB includes STUI pictures as a requirement. Where indicated, please include the last 6 digits of the VIN and date of repair on a piece of paper. Ensure the VIN and date of repair are clearly visible. Finally, please ensure the captured pictures are completed according to the steps in this TSB and uploaded to STUI. All claims submitted that have illegible, incomplete, missing, or incorrect pictures are subject to debit.

**Applicable Vehicles:** Certain 2022MY GV70 (JK1) vehicles produced from 3/10/2021 – 8/9/2021

**Parts Information:**

Parts Name	Figure	Remarks
Epoxy Adhesive		<ul style="list-style-type: none"> <li>• 3M Scotch-Weld Epoxy Adhesive DP420</li> <li>• 5 vehicles per tube</li> </ul>
Undercoating Spray		<p>Recommended Products:</p> <ul style="list-style-type: none"> <li>• 3M Professional Grade Rubberized Undercoating</li> <li>• Rust-Oleum Undercoating Spray Pro Grade</li> </ul>

**NOTE:** Epoxy and undercoating spray can be purchased online or through local parts suppliers.

**Warranty Information:**

Model	Op. Code	Operation	Op. Time	Causal Part	Nature Code	Cause Code
GV70 (JK1)	10D204R0	SIDE SILL BODY PANELS INSPECTION	0.2 M/H	65171-AR000	A32	ZZ8
	10D204R1	SIDE SILL BODY PANELS INSPECTION AND REPAIR (ONE SIDE)	0.9 M/H			
	10D204R2	SIDE SILL BODY PANELS INSPECTION AND REPAIR (BOTH SIDES)	1.1 M/H			

**NOTE 1:** Submit claim on Campaign Claim Entry Screen.

**NOTE 2:** If a part that is not covered by Service Campaign T23G is found in need of replacement while performing this service campaign and the affected part is still under warranty, submit a separate claim using the same repair order. If the affected part is out of warranty, submit a Prior Approval Request for goodwill consideration prior to the repair.

**NOTE 3:** Labor op code 10D204R1 will reimburse \$23 & labor op code 10D204R2 will reimburse \$26 for epoxy and undercoating spray through sublet.

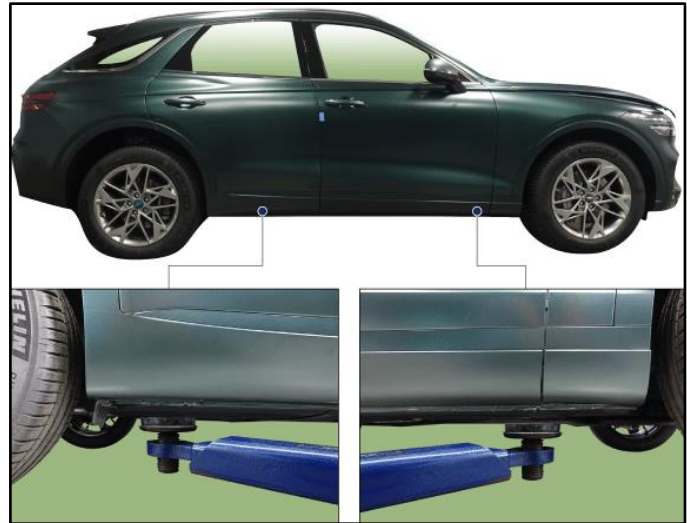
**NOTE 4:** Op time includes taking STUI photos and uploading. The STUI photos must include the inspection of the panels and application of epoxy/undercoating spray (if necessary, based on inspection) with a piece of paper displaying the last 6 digits of the VIN and date of the repair. **If not included, claim will be subject to debit.**

**Inspection Procedure:**

1. Lift the vehicle.

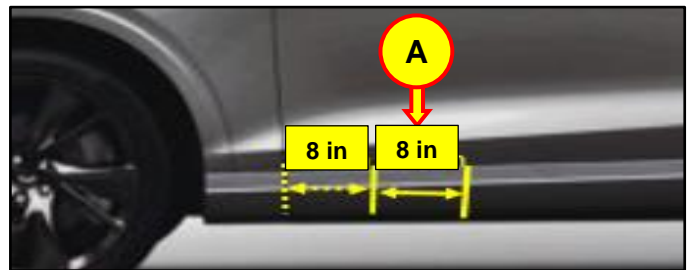
**NOTICE**

- Ensure that the correct lifting points are used for the vehicle. Refer to the shop manual for more information on the location of the correct lifting points.



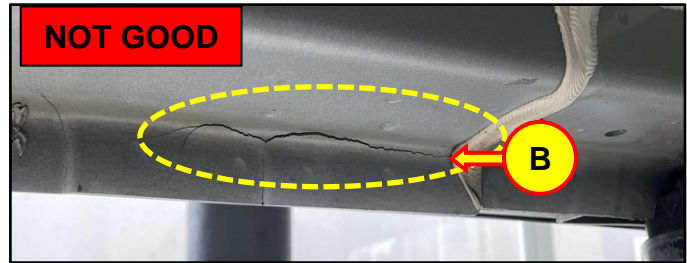
2. Inspect the underside and backside of side sill body panel in the indicated area (A).

Inspect the indicated area (A) on both sides of the vehicle.



3. If crack(s) (B) are found as shown, proceed to the service procedure on the next page to repair the affected side sill(s).

If no cracks are found on both LH and RH side sills, no further action is required.



**STUI**



Using STUI, take photos of the side sills on both sides of the vehicle. If cracks are found, ensure they are clearly visible in the photos. Include in the photos a piece of paper containing the last 6 digits of the VIN and the date of the repair.

Upload the photos to STUI.

### Epoxy/Undercoating Spray Application:

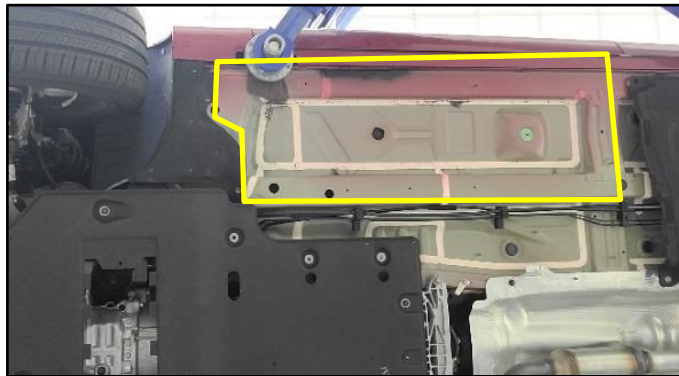
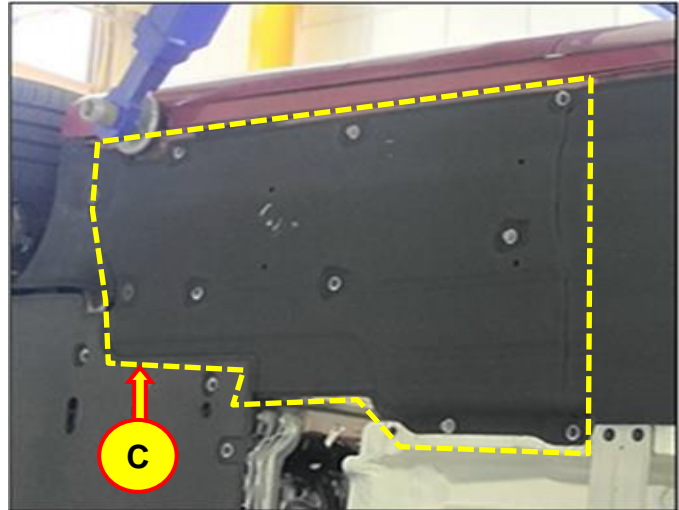
1. Loosen the bolts and clips for the undercover panel (C) and remove it.

#### Tightening Torque:

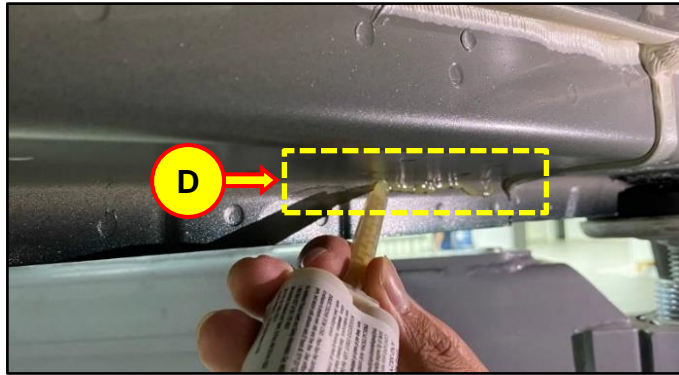
5.8 – 8.7 lb-ft (7.8 – 11.8 Nm)

#### **i** Information

- Ensure the side sill area(s) are clean of dirt and dust before proceeding to the next step.



2. Apply the epoxy adhesive to the cracked area (D) of the side sill body panel.



3. Evenly spread the epoxy adhesive using a flat plastic tool or trim remover.

#### **i** Information

- After applying the epoxy adhesive, wait approximately 20 minutes before proceeding to the next step.



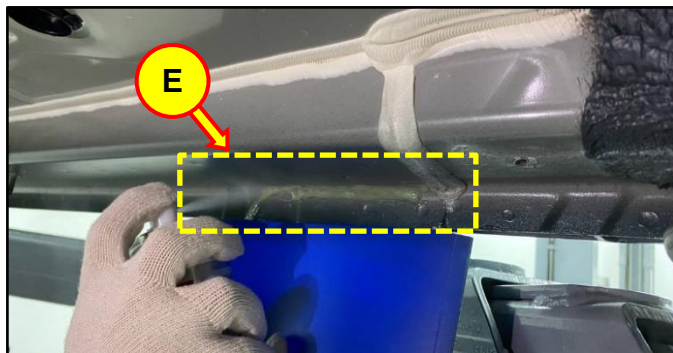
4. Apply the undercoating spray onto the the area where the epoxy adhesive was applied (E).

**STUI**



Using STUI, take photo(s) of the side sill area(s) after the undercoating spray has been applied. Include in the photo(s) a piece of paper containing the last 6 digits of the VIN and the date of the repair.

Upload the photos to STUI.



**Example of acceptable STUI photo**

5. Repeat steps 1 – 4 on the opposite side if necessary.
6. Reinstall parts in reverse order of disassembly.
7. The service procedure is now complete.