

<u>Department Attention</u>		
<input checked="" type="checkbox"/> Dealer Management	<input type="checkbox"/> Parts	<input type="checkbox"/> _____
<input checked="" type="checkbox"/> Vehicle Sales	<input type="checkbox"/> Gear	<input type="checkbox"/> _____
<input checked="" type="checkbox"/> Service	<input checked="" type="checkbox"/> Accessories	<input type="checkbox"/> _____

Subject: *IMPORTANT DEALER COMMUNICATION!*

Dear Royal Enfield Dealers:

The purpose of this communication is to inform you of an updated ECU software version for all USA/Canada Himalayans MY '17-'22. **Please do not attempt to perform this procedure on any other models including MY '23 and later Scram and Himalayan.**

This procedure has been homologated and verified by the EPA and CARB and complies with all federal regulations for the US/Canada to include California.

The new software version will help to eliminate cold starts and runnability concerns. This procedure may be performed on any vehicle mentioned above exhibiting these symptoms.

Included within this document are the instructions and necessary file links to install the laptop DOL version and how to flash the ECU after installation. ***If you have already installed the desktop DOL version, please proceed to step 3.***

Please take the time to read through and circulate all the attachments to the appropriate staff within your dealership.

If you have any questions and or concerns, please contact your Regional Manager or email us at renaservice@royalenfield.com

Sincerely,
Royal Enfield of North America



Step:1

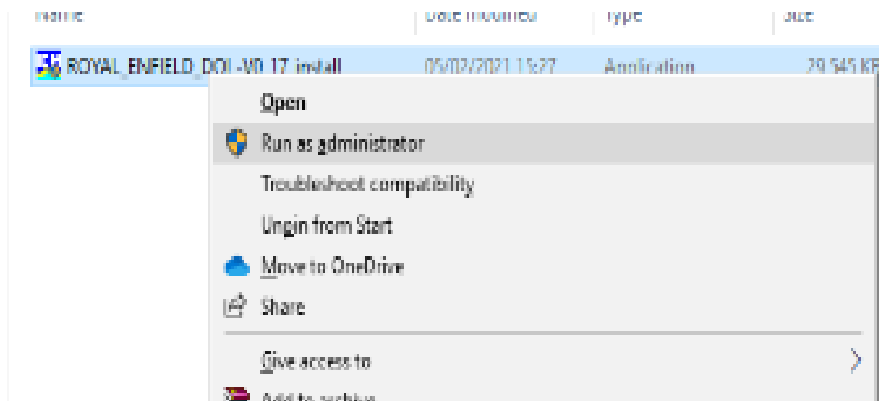
Installation of Program file in Laptop/Desktop (One time Activity)

Click on the below Hyperlink and download the PC software to your local desktop/Laptop

(http://www.win-star.com.tw/royal/ROYAL_ENFIELD_DOL-V0_17_Beta9_install.exe)

Double click on ROYAL_ENFIELD_DOL-V0_17_Beta9_install.exe

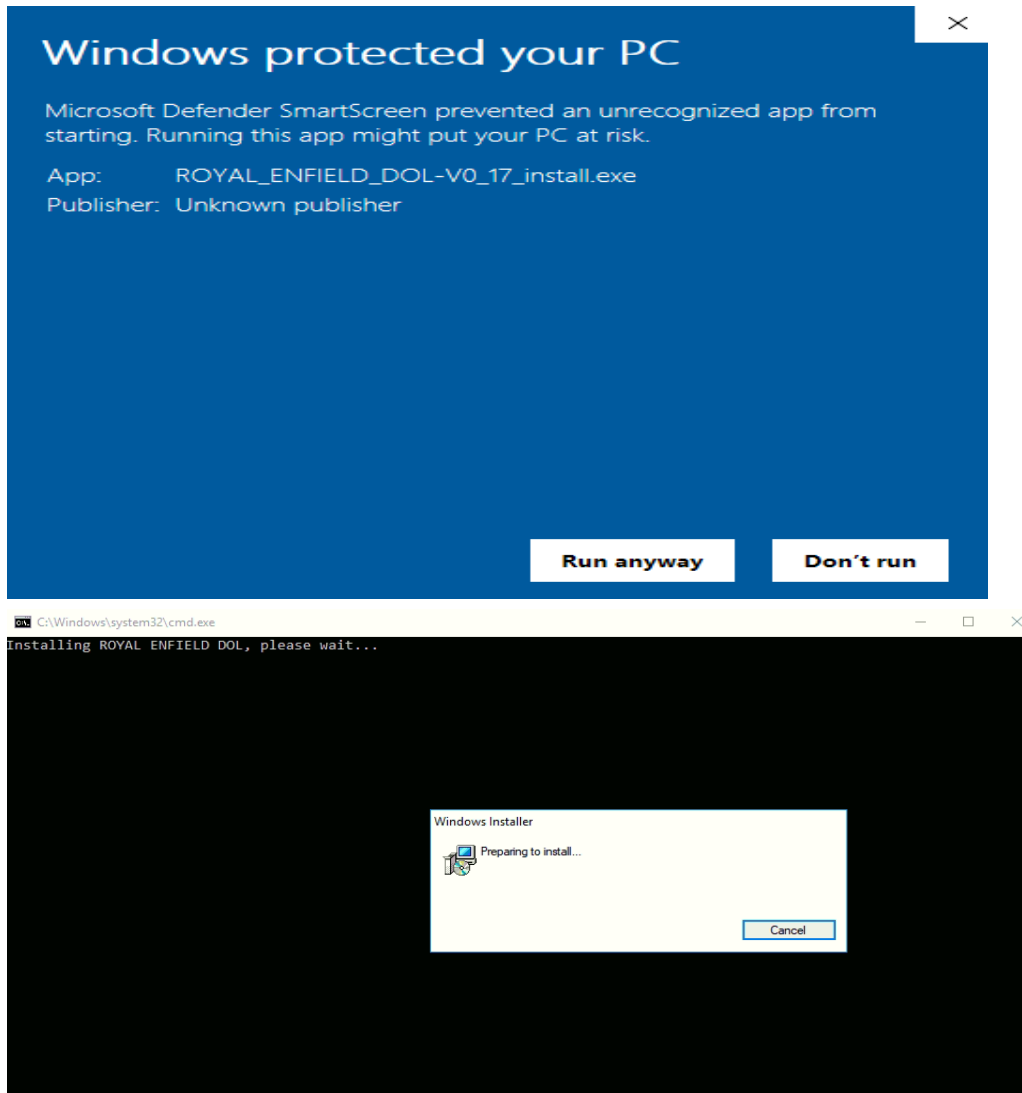
Should run as **administrator**



Click on **More Info**



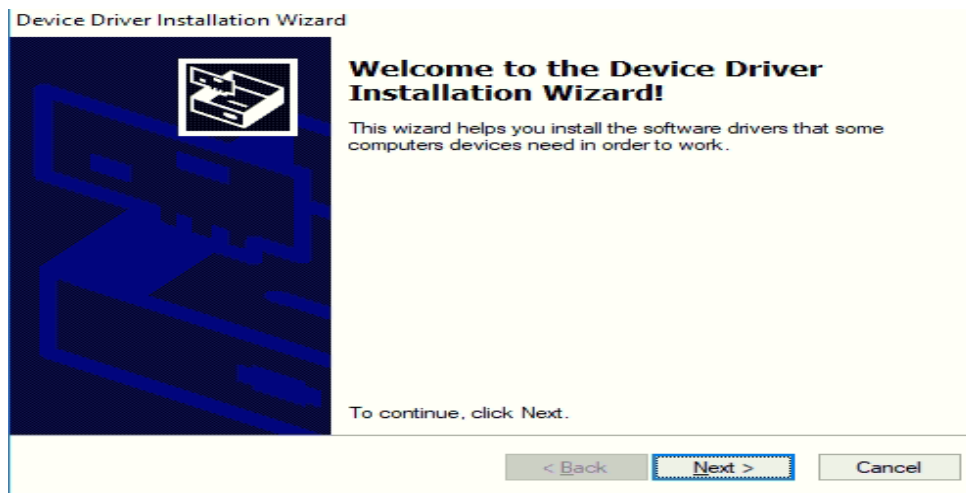
Click on **Run anyway**



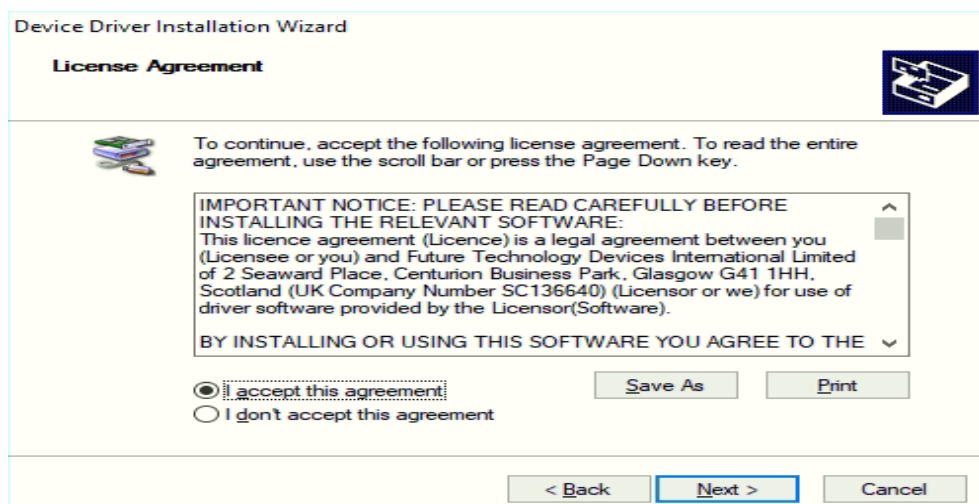
Click on **Extract**



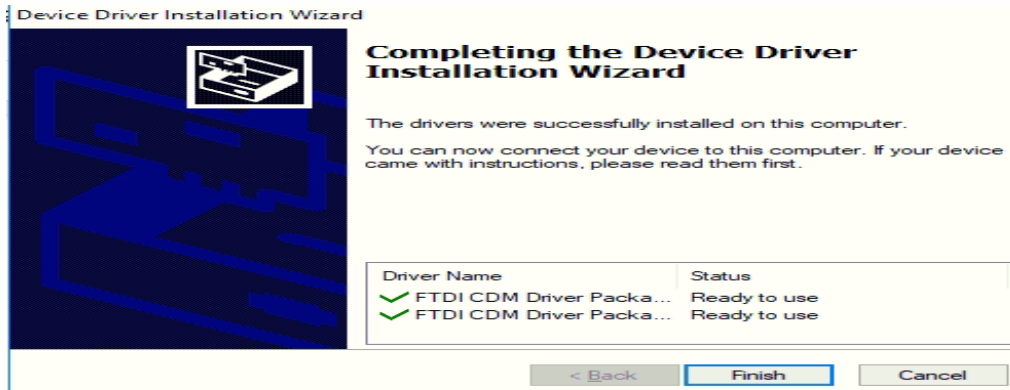
Click on **Next**



Click on **Next**



Click on **Finish**



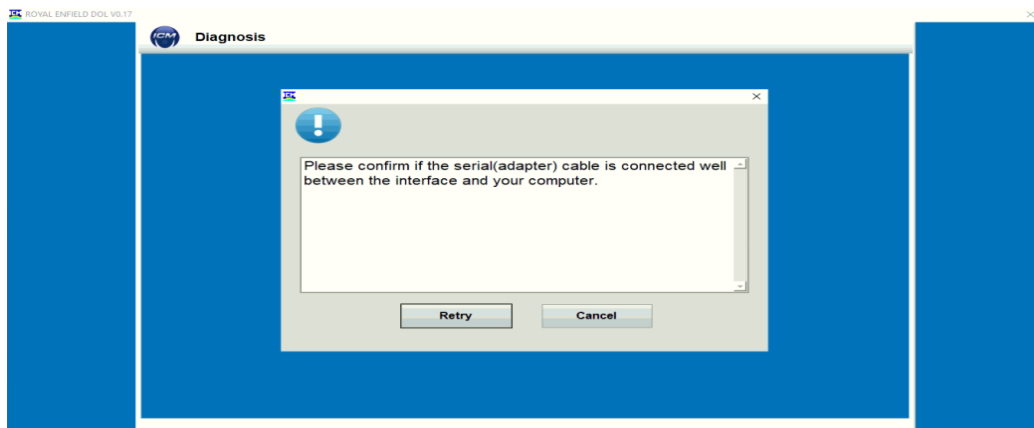
Step 2: Tool Activation / Server Registration:

After installation, connect the DOL tool to the Motorcycle and the USB to the Laptop/Desktop, Ignition KEY and KILL switch should ON condition, click on the DOL icon it will automatically navigate the right model else do the manual selection.

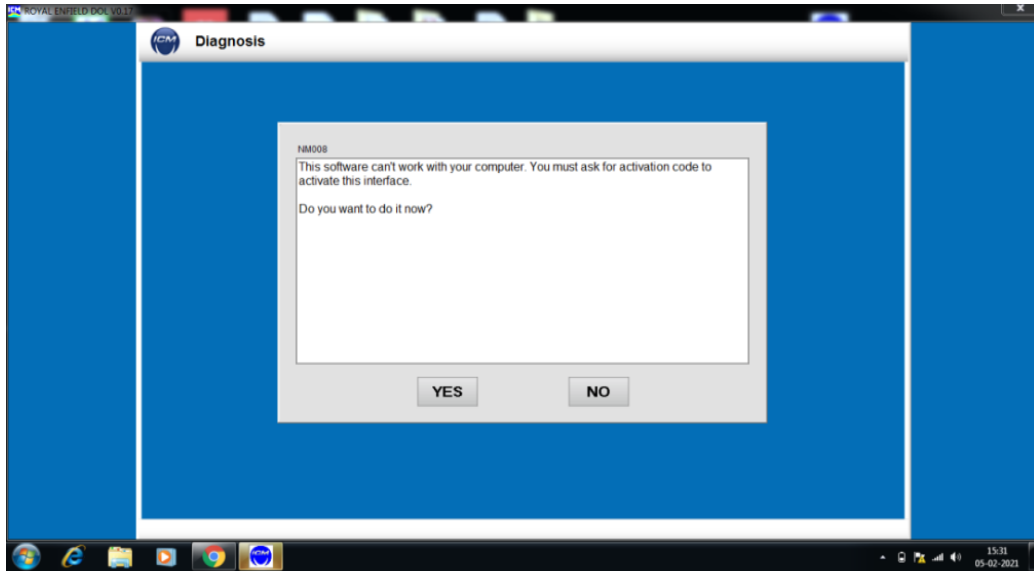


Manual Selection:

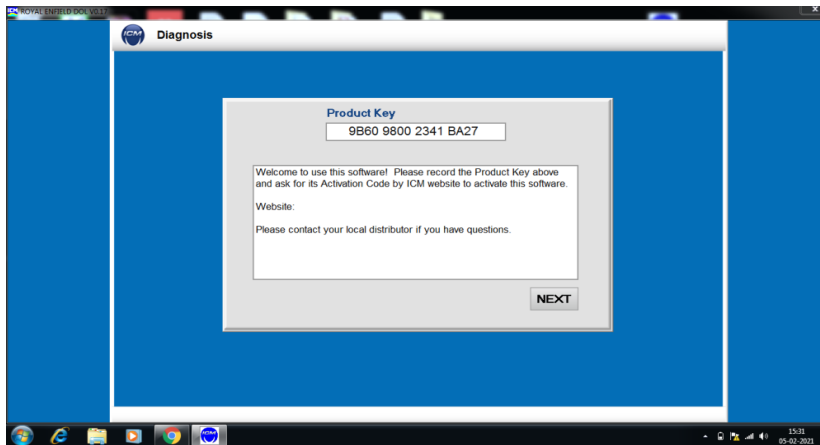
Click on **Retry**



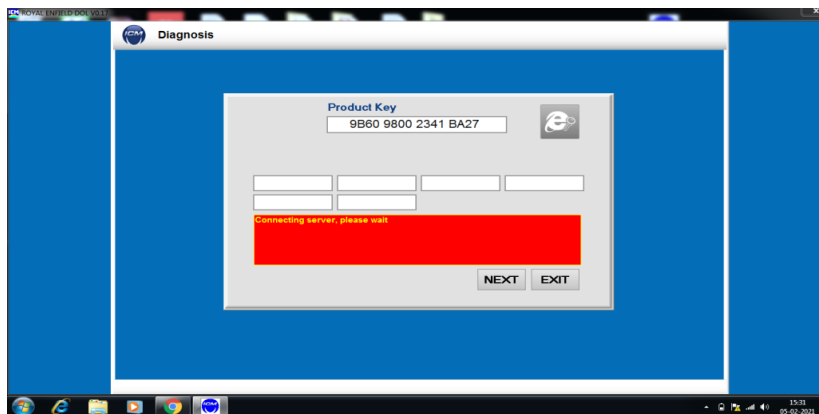
Click on **YES**



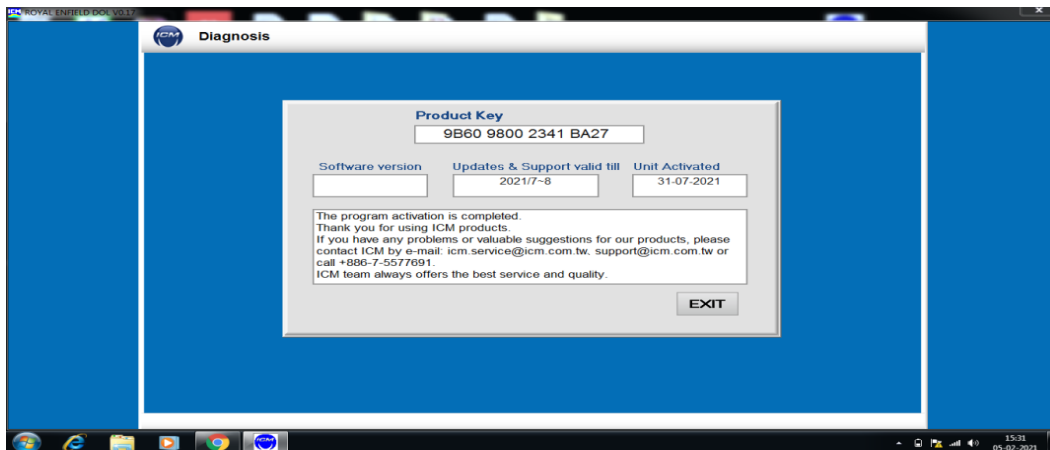
Click on **NEXT**



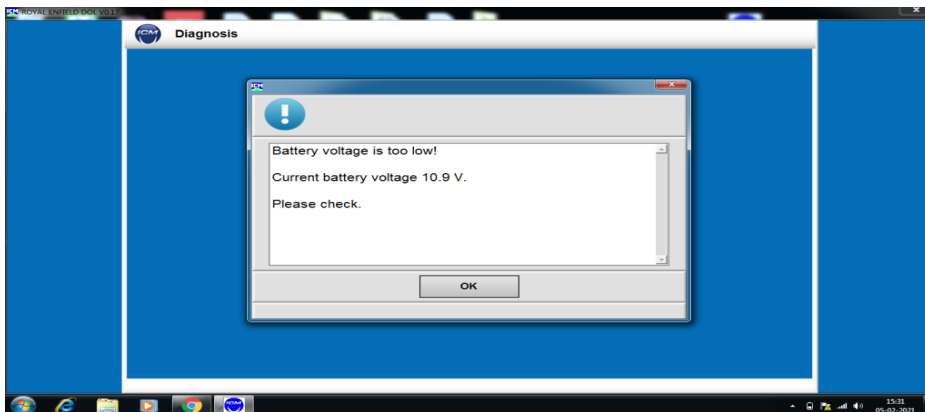
Click on **NEXT**



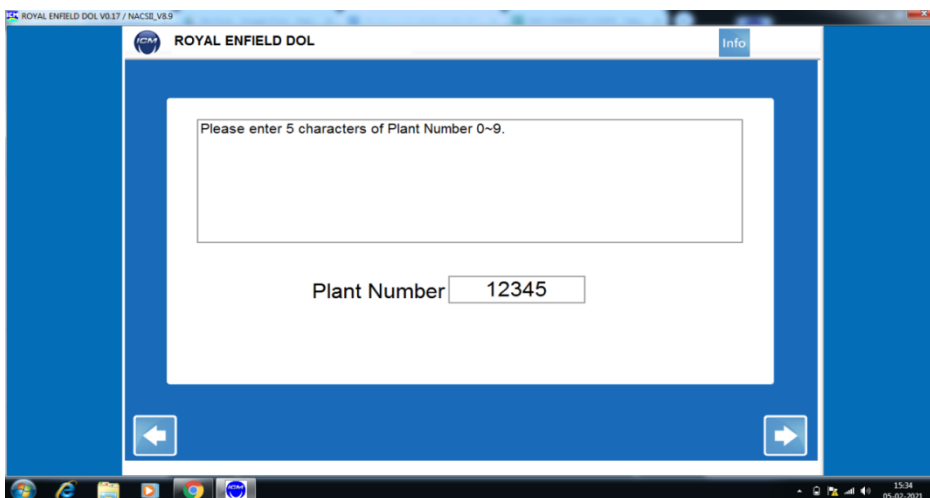
Click on **EXIT**

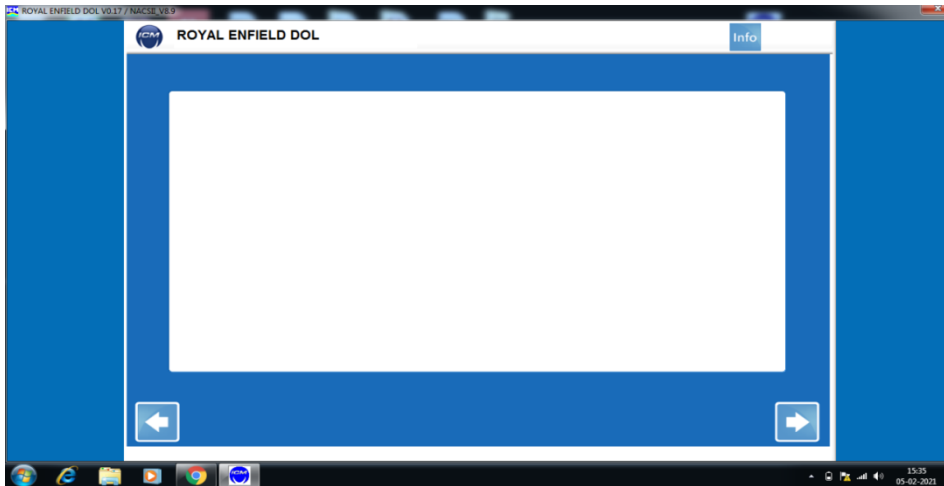


Click on **OK**



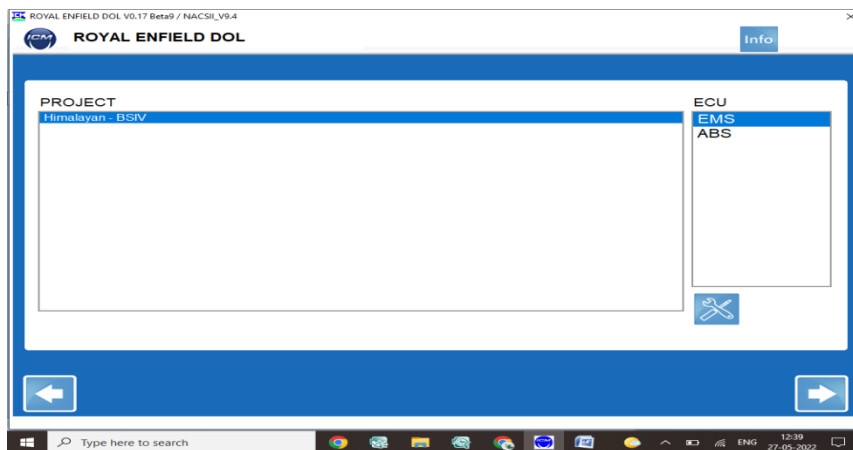
IF it asks for Plant Number Type **12345 (default)** Click on **Next**



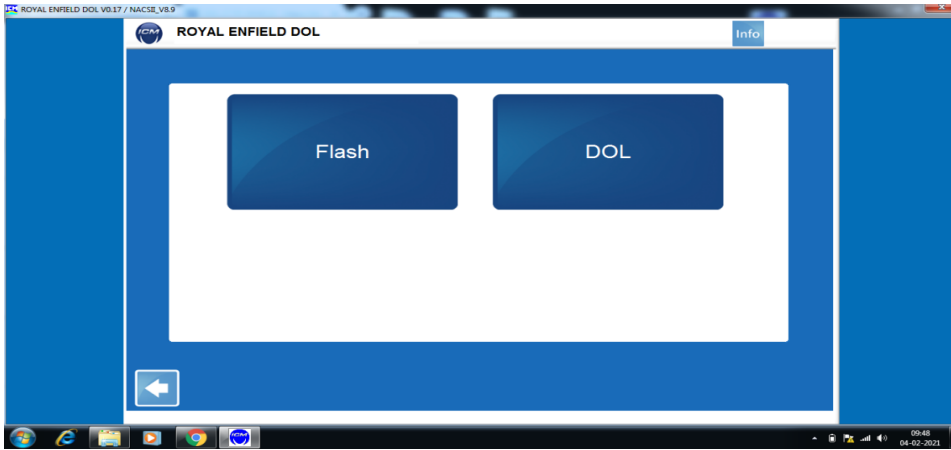


Step 3:

Now the tool is ready for ECU updating, the software automatically navigates and will show the models. Otherwise, select **Himalayan - BS IV**, EMS and Click next button

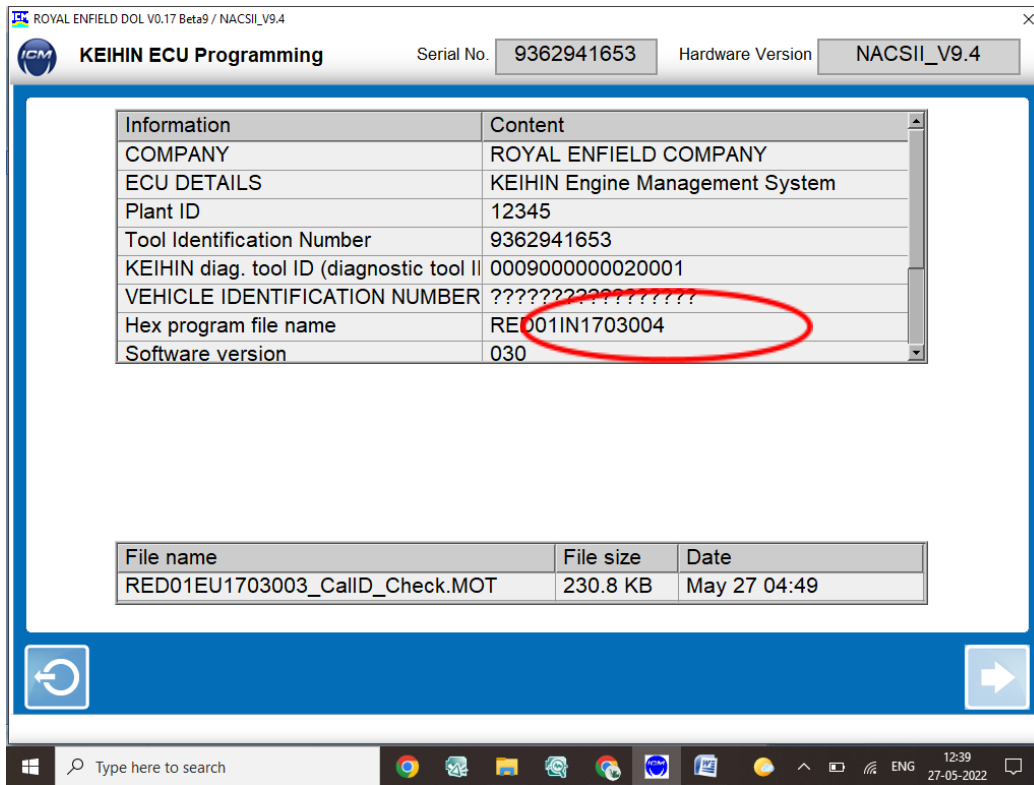


Select **FLASH**

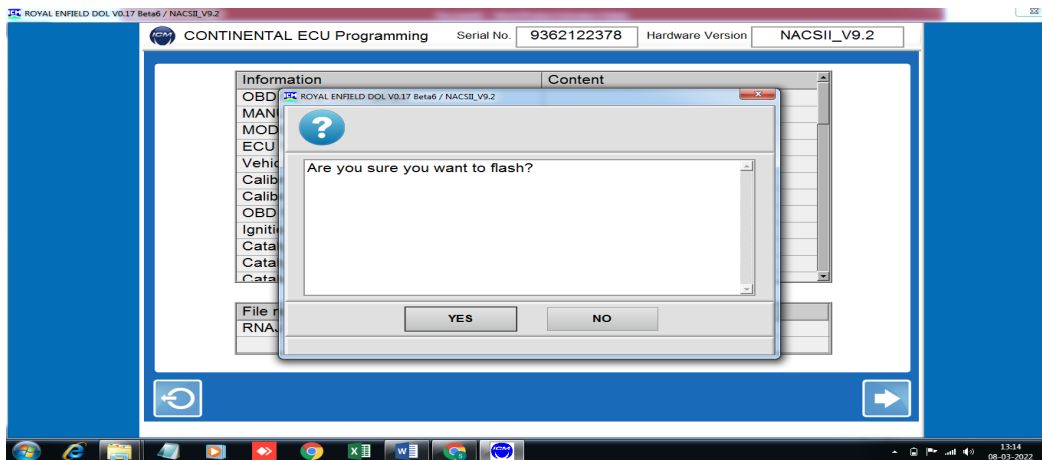


Check for the ECU Calibration ID- **RED01IN1703004 (This is the original Cal. ID)**

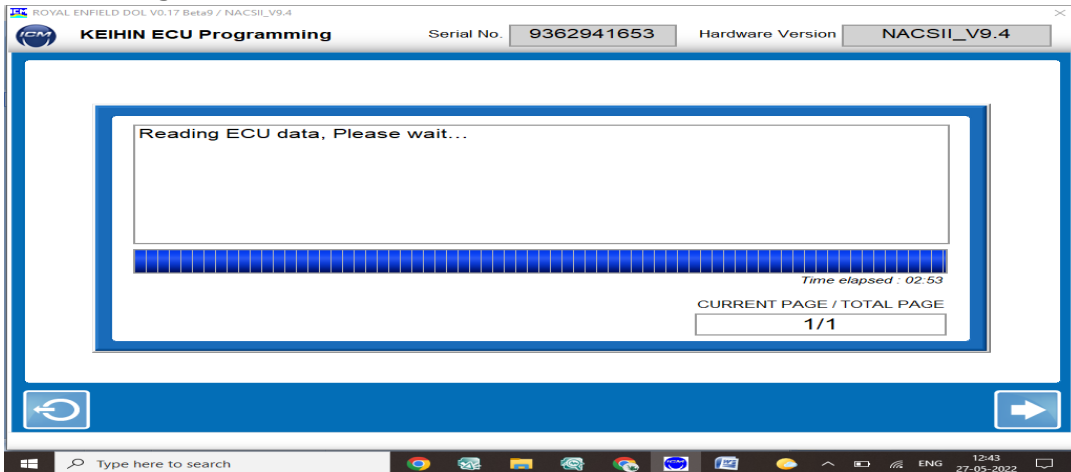
Click the next arrow key to download the file and update into the ECU.



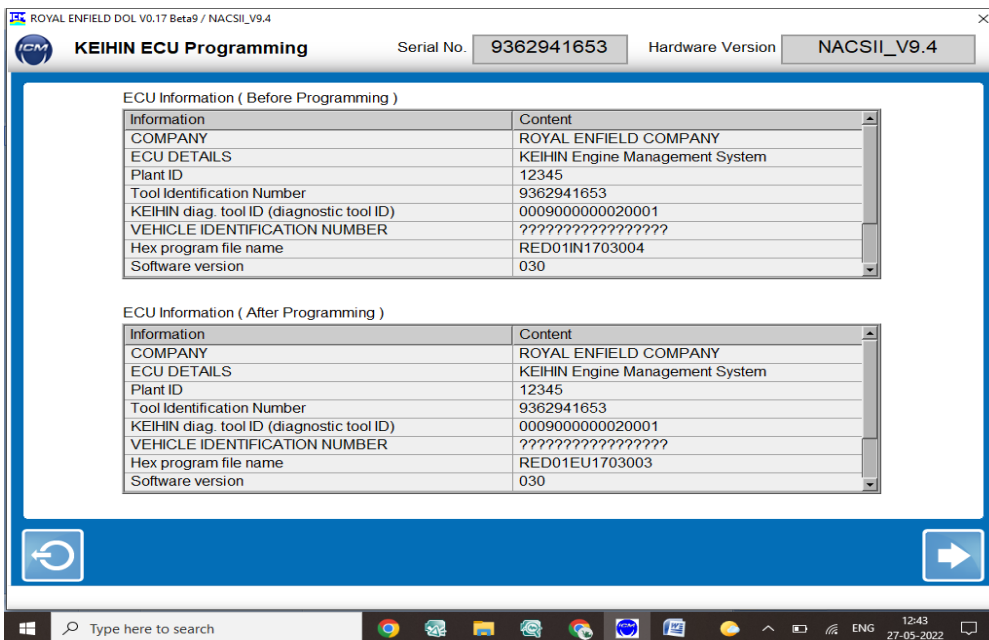
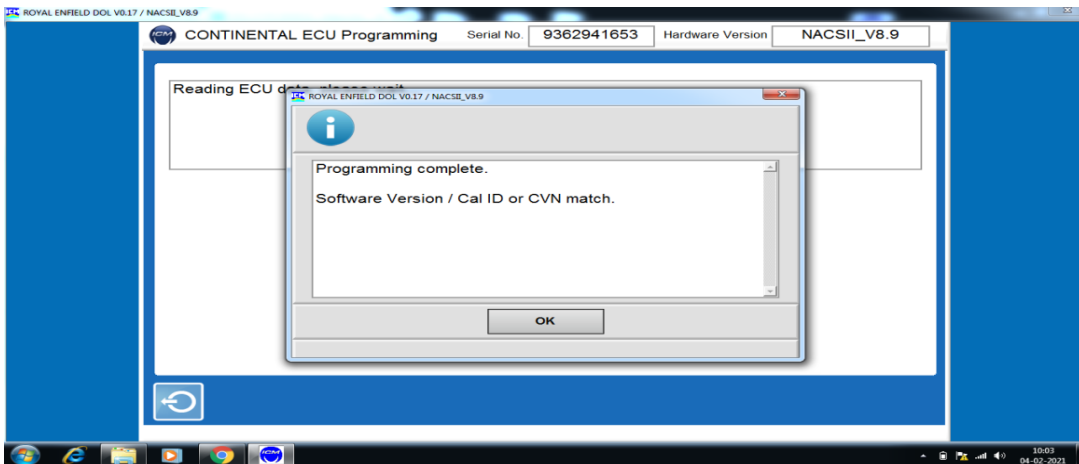
Click ON YES



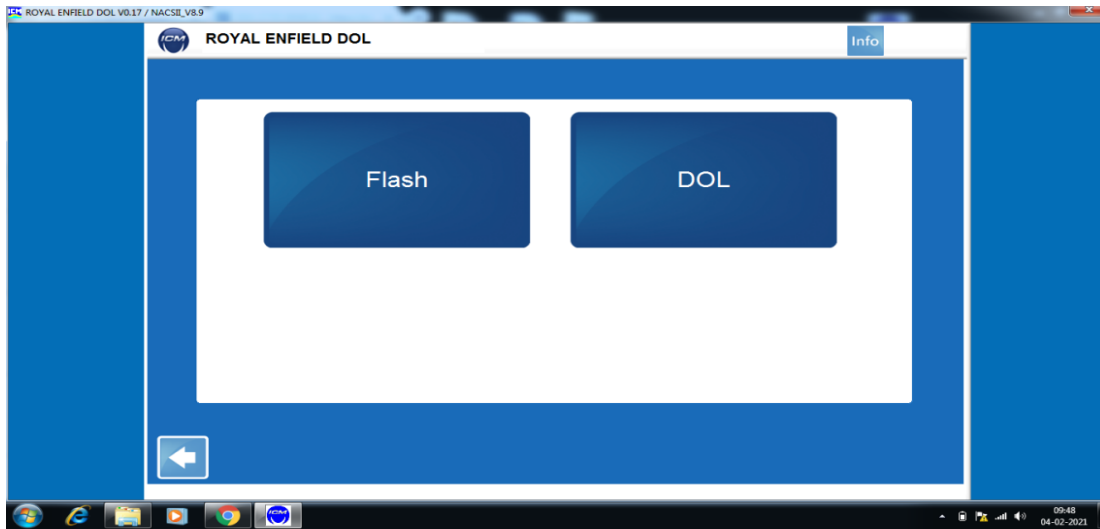
ECU flashing starts



Programming completed, Click on OK



Open **DOL**,



Check for the **ECU INFO**

Check for the following Calibration ID / CVN

Model	After Flashing
Himalayan	ECU Calibration ID : RED01EU1703003
	CVN:F7C6C4C7

Flashing is completed.

NOTE:

- 1) During this process do not disturb the motorcycle/connections and ensure proper internet connectivity.

- 2) Even after the flashing is completed the server shows the flash file even with the New Calibration Verification Number: F7C6C4C7 and it's normal no need to click next button/Re-flash the ECU.
- 3) If the flashing fails, IG KEY OFF & KILL SWITCH OFF, remove the ECU & connect it back after 2 min and close & reopen the DOL software and repeat from Step:3

Switch of the IG KEY and KILL switch for 90 sec.

Start the unit and allow it to reach operating temperature (75-85 degrees C). At this time, it may be necessary to adjust the idle. To lower the idle, turn the brass screw on the top of the throttle body. Idle specifications are as follows:

	PDI Stage	1st Service
Idling RPM (By Tachometer)	1320+/-20	1280+/-20
Temperature	75 - 85 degC	75 - 85 degC