

**TECHNICAL INSTRUCTIONS**  
**FOR**  
**LIMITED SERVICE CAMPAIGN KLG**  
**CUSTOMER SUPPORT PROGRAM 19LE05**

**SAFETY CONNECT SYSTEM – VEHICLE LOCATION INACCURATE**  
**CERTAIN**

**2011 – 2017 MODEL YEAR LS, 2013 – 2016 MODEL YEAR LS Hybrid,  
2011 – 2017 MODEL YEAR GS, 2016 – 2017 MODEL YEAR GS-F,  
2013 – 2017 MODEL YEAR GS Hybrid, 2010 – 2017 MODEL YEAR IS,  
2011 – 2015 MODEL YEAR IS-C, 2013 – 2014 MODEL YEAR IS-F,  
2015 – 2017 MODEL YEAR RC, 2015 – 2017 MODEL YEAR RC-F,  
2011 – 2017 MODEL YEAR CT, 2010 – 2017 MODEL YEAR RX,  
2010 – 2017 MODEL YEAR RX Hybrid, 2015 – 2017 MODEL YEAR NX,  
2015 – 2017 MODEL YEAR NX Hybrid, 2013 – 2017 MODEL YEAR LX,  
2013 – 2018 MODEL YEAR GX, 2010 – 2017 MODEL YEAR ES,  
2013 – 2017 MODEL YEAR ES Hybrid**

**Updated 08/24/2020**

Update 8/24/20

- Special CUW Application has been updated. Techstreams running version 15.1 or newer software will need to update the Special CUW Application using the link on page 6

Update 10/17/19

- The title has been updated to include Customer Support Program 19LE05

Update 9/13/19

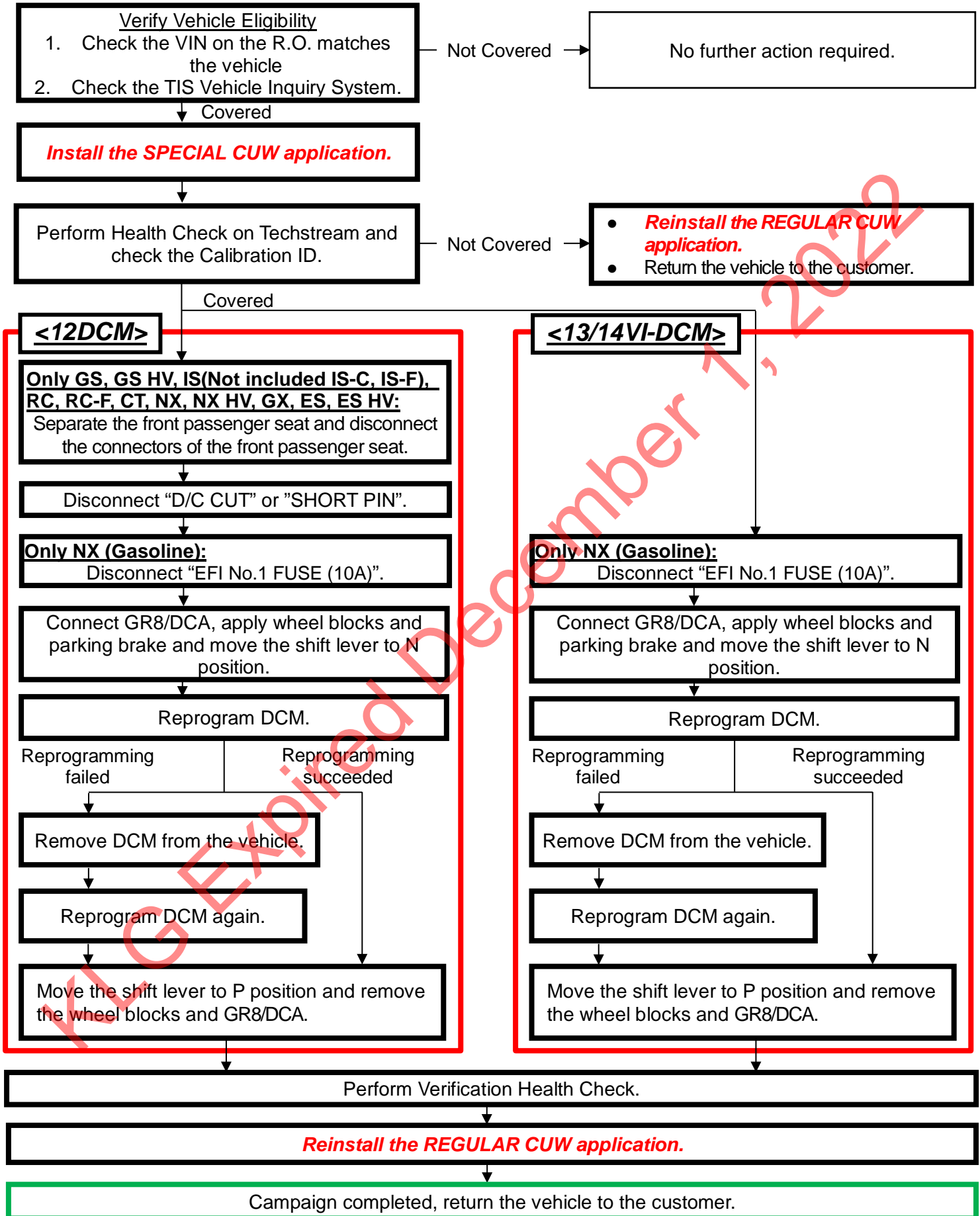
- The process has been updated to address an issue with Techstream. Technicians will no longer determine if an update is required based on the Update column Yes/No option displayed during a health check. Technicians will determine if an update is required based on calibration ID only

**The repair quality of covered vehicles is extremely important to Lexus. All dealership technicians performing this LSC are required to successfully complete the most current version of the E-Learning course “Safety Recall and Service Campaign Essentials”. To ensure that all vehicles have the repair performed correctly; technicians performing this LSC repair are required to currently hold at least one of the following certification levels:**

- **Certified**
- **Senior**
- **Master**

**It is the dealership’s responsibility to select technicians with the above certification level or greater to perform this LSC repair. Carefully review your resources, the technician skill level, and ability before assigning technicians to this repair. It is important to consider technician days off and vacation schedules to ensure there are properly trained technicians available to perform this repair at all times.**

## I. OPERATION FLOW CHART



## II. IDENTIFICATION OF AFFECTED VEHICLES

### NOTE:

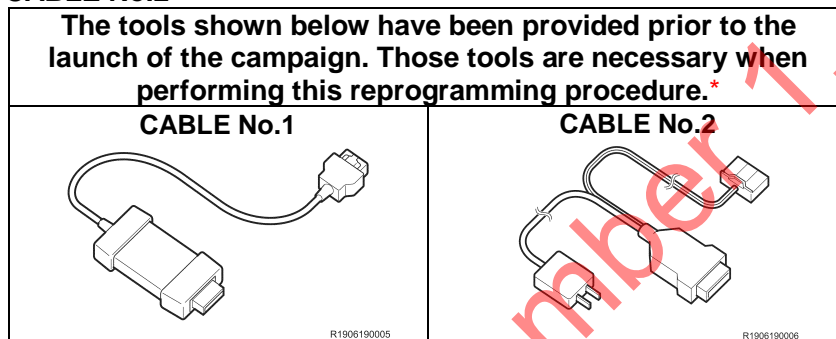
- Check the TIS Vehicle Inquiry System to confirm the VIN is involved in this LSC and that the campaign has not already been completed prior to dealer shipment or by another dealer.
- TMNA warranty will not reimburse dealers for repairs conducted on vehicles that are not affected or were completed by another dealer.

## III. PREPARATION

### A. TOOLS & EQUIPMENT

- Standard Hand Tools
- CUW Maintenance Tool
- GR8/DCA Battery Diagnostic Station
- Techstream 2.0 / TIS Techstream / Techstream Lite (Software 14.1 or Higher)

### B. CABLE No.1 & CABLE No.2



\* **DO NOT** use these tools except for this campaign.

## IV. BACKGROUND

The Data Communication Module (DCM) in the subject vehicles are equipped with software to identify the location of the vehicle using the Global Positioning System (GPS) to support features of the Safety Connect system. Due to incorrect programming in the DCM software, after November 2<sup>nd</sup>, 2019, the GPS coordinates for this system will be calculated incorrectly. This will cause the system to use incorrect vehicle coordinates if one of the system's features is activated.

## V. PROCEDURE OVERVIEW

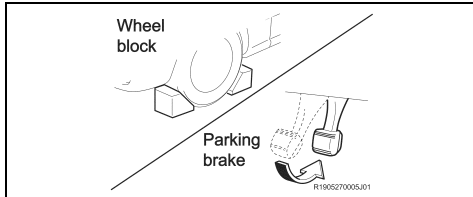


### CRITICAL INFORMATION

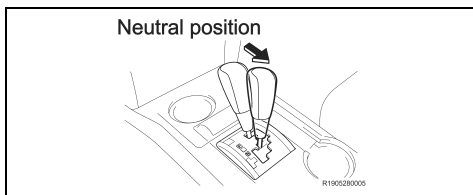


- You will perform the reprogramming after installing a dedicated CUW application (Special CUW (only for DCM)) to a Techstream. By using this dedicated CUW application, the reprogramming time can be shortened.
- The reprogramming takes more than 60 minutes to complete, and the vehicle will turn the IG OFF automatically when it has passed about 60 minutes with IG ON while the shift lever is in P position.

Therefore, make sure to perform the following works before starting the reprogramming.



<<APPLY WHEEL BLOCKS AND PARKING BRAKE>>



<<MOVE THE SHIFT LEVER TO N POSITION>>

## VI. SAFETY PRECAUTIONS

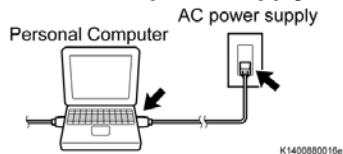


### CRITICAL INFORMATION - READ THOROUGHLY



**An ECU could be damaged if an error occurs in the communication while reprogramming the ECU. Confirm all work is performed as described in these instructions.**

**Be sure to connect the personal computer to an external AC power supply.**



**Turn off the screen saver and power saving mode.**



**DO NOT block the ventilation opening.**



#### 1. STABILIZE THE POWER TO THE TECHSTREAM SIDE

- a) Be sure to connect the Techstream to an external AC power supply.

**NOTE:**

**The ECU could be damaged if the battery voltage of the Techstream drops while reprogramming.**

- b) Turn off the screen saver and power saving mode of the Techstream so that the power to the hard disk is kept supplied.

**NOTE:**

**If the screen saver or power saving mode launches while reprogramming, the communication may be disconnected, resulting in the damage of the ECU.**

- c) **DO NOT** block the ventilation opening for the cooling fan of the Techstream.

**NOTE:**

**If the ventilation opening for the cooling fan is blocked with a sheet cover or the like, the Techstream may be heated excessively, causing the operation of the Techstream to stop. Due to the stop of the operation, the communication for reprogramming signals could be stopped, resulting in the damage of the ECU.**

## VII. INSTALLATION OF THE SPECIAL CUW APPLICATION



- Please make sure to use the special CUW application to perform the ECU reprogramming.
- You cannot exit the special CUW application until you complete the reprogramming.

### 1. DOWNLOAD THE SPECIAL CUW APPLICATION

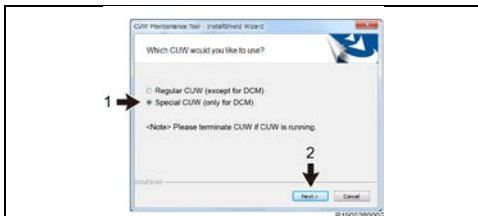
- a) Click the link below to download the Special CUW Application

**NOTE: Special CUW Application has been updated. Techstreams running version 15.1 or newer software will need to delete the current Special CUW Application software on Techstream and download the new version below.**

### SPECIAL CUW APPLICATION V.2

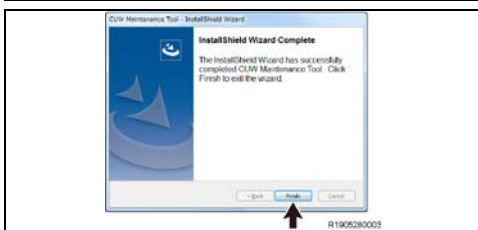


### 2. RUN THE INSTALLER



### 3. SELECT THE SPECIAL CUW APPLICATION

- a) Select "Special CUW (only for DCM)".
- b) Click on the "Next" button to install the special CUW application.



### 4. COMPLETE INSTALLATION

- a) Click on the "Finish" button to finish.

**NOTE: Use the special CUW application after installing it to the personal computer which has Techstream.**

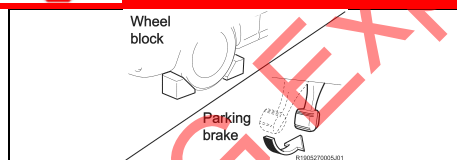
## VIII. VEHICLE PREPERATION

### 5. VEHICLE PREPERATION

- a) Record settings of the audio system, air conditioner, front seats position, etc. since the cable of the negative battery terminal is going to be disconnected in a later step.



### Confirm the following conditions



- Vehicle in the IG ON position (engine off).
- Turn off all electrical accessories (i.e. audio system, etc.)
- Windshield wiper switch in the OFF position.
- Headlight switch in the DRL OFF position.

### 6. CONNECT THE 12V BATTERY TO A POWER SUPPLY (GR8/DCA)

- a) Connect the GR8/DCA or other type of a power supply (not a battery charger) to the 12V battery.
- b) Select the Power Supply Mode from the Charge Menu of the GR8/DCA.



**A power supply MUST be used during reprogramming. ECU damage will occur if the battery voltage is not properly maintained during this re-flash procedure.**

**NOTE: A power supply must be connected directly to the 12V battery terminals and NOT the remote jump posts under the hood (if equipped).**

## IX. CHECK FOR DTC'S

### 1. CONNECT THE TECHSTREAM TO THE VEHICLE

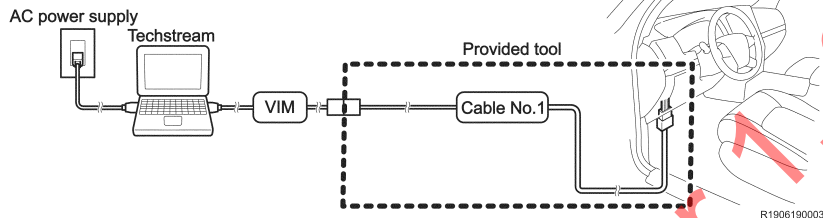
- Turn the IG OFF.
- Using a Cable No.1 (provided tool), connect the Techstream to the vehicle.

**NOTE: DO NOT use this tool except for this campaign.**



**Follow the instructions below. Otherwise, the battery voltage will decrease or communication will become disabled, and this may require the replacement of the DCM.**

- Turn off the screen saver and power saving mode of the PC.
- Use the external power supply for the PC. (**DO NOT** use the PC's internal battery or vehicle's battery.)
- Ensure that the communication cable connectors are securely connected, the cable is in good condition, and the connection is stable.



### 2. VERIFY TECHSTREAM SETUP

- Verify that the Techstream meets the following conditions:
  - The software version 14.1 or higher is loaded.
  - The Techstream battery is fully charged. If not, connect the Techstream to a 120V source.
  - The DLCIII cable is in good condition.



**The Techstream's battery voltage must also be maintained during the re-flash procedure. If necessary, plug the Techstream into a 120v outlet during this procedure.**

**NOTE: If the Techstream communication with the vehicle fails during the re-flash procedure, the DCM will be damaged.**



### 3. CHECK FOR DTCs

- Using a Techstream, perform a Health Check to check for any Diagnostic Trouble Codes.

**NOTE: This Campaign covers only the software update to the Telematics System, as detailed in these instructions. It does not cover the diagnosis or replacement of any other systems on the vehicle.**

## X. TELEMATICS SYSTEM CALIBRATION ID CHECK



### Action to take for Telematics System Reprogramming

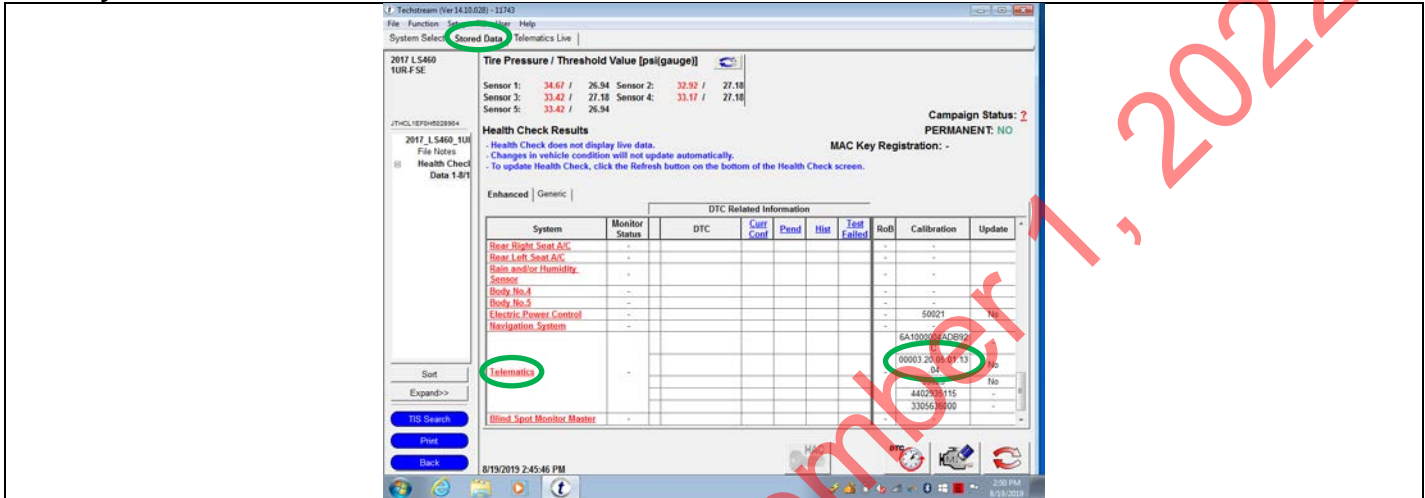


**There are 3 different ways to reprogram the Telematics System. Make sure to follow the instructions of these technical instructions.**

#### 1. CHECK CURRENT CALIBRATION

a) Determine the status of an available update; indicated by the calibration ID.

**Note:** Do not use the update column and an indicator if an update is required as it will always say No. Only use calibration ID



Is the calibration ID listed in the table below?

Yes

No

Proceed to the next step.

- Campaign complete. Return the vehicle to the customer.
- **Reinstall the REGULAR CUW** application.

b) Reprogram the Telematics System to the **NEW** CID following the table below.

**NOTE:** Take note of both current and new CID to be able to select correctly.

DCM(Telematics System) Calibrations		
DCM Model	Current CID	Action
12DCM	00002.40.06.04.01.91	Go to section XI
13/14 VI-DCM	00003.00.05.01.03.16	Go to section XII
	00003.00.05.01.03.21	
	00003.00.05.01.13.02	
	00003.00.05.01.13.03	
	00003.00.05.01.13.04	
	00003.00.05.01.13.06	
CID other than above		Go to section XVI



## XI. 12DCM UPDATE CALIBRATION

STOP

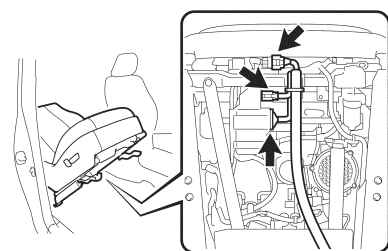
### Vehicle preparation before updating the telematics system

STOP

#### 1. VEHICLE PREPARATION BEFORE UPDATING THE TELEMATICS SYSTEM

- a) Turn IG to the OFF position.

**Be sure to disconnect each connector after disconnect the negative battery terminal**



This illustration uses GS for reference

- b) DISCONNECT THE FRONT PASSENGER SEAT CONNECTORS (Only GS, GS HV, IS (Not included IS-C, IS-F), RC, RC-F, CT, NX, NX HV, GX, ES, ES HV)

##### NOTE:

- The reprogramming may fail if you perform it without disconnecting the connectors. Please make sure to disconnect the connectors before performing the reprogramming.
- Disconnect the cable from the negative battery terminal to disable the SRS system. Refer to the repair manual in detail.
- Be sure to disconnect each connector after disconnect the negative battery terminal.

- (1) Separate the front passenger seat, and then disconnect each connector of the front passenger seat.

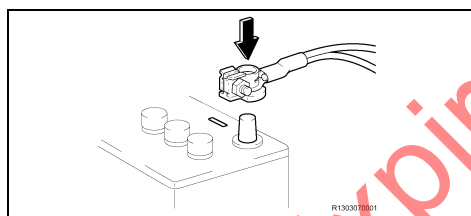
##### NOTE:

- Separate the front passenger seat following the instructions on the repair manual. However, there is no need to take it out.
- Depending on seat type, you may need to perform certain initializations (such as Zero Point Calibration) refer to the repair manual for details

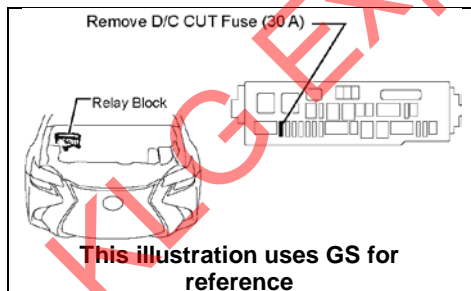
Go on TIS and refer to the repair manual for how to separate the seat

Path: SEAT / FRONT SEAT ASSEMBLY / REMOVAL

**Note:** you can copy and paste the path above into the TIS search bar to access the instructions quickly



Remove D/C CUT Fuse (30 A)



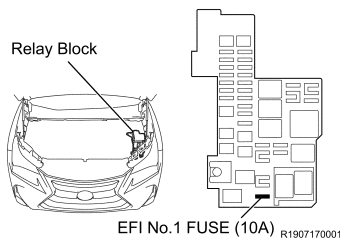
This illustration uses GS for reference

- c) DISCONNECT "D/C CUT " OR "SHORT PIN"

##### NOTE:

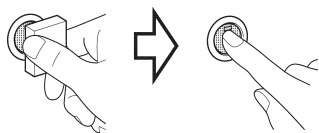
- The reprogramming may fail if you perform it without disconnecting the "D/C CUT" or "SHORT PIN". Please make sure to disconnect the "D/C CUT" or "SHORT PIN" before performing the reprogramming.
- Refer to Section XIV for the location of "D/C CUT" and "SHORT PIN" of each vehicle model.

### Only NX (Gasoline)



Hold the key directly  
in front of the button

Press the button twice  
with the brake  
released



R1906200002

- d) DISCONNECT “EFI No.1 FUSE (10A)” (Only NX (Gasoline))

#### NOTE:

Failure to remove the EFI No.1 Fuse may cause damage to the fuel pump assembly.

- e) Turn the IG to the ON position (engine off).

#### NOTE:

**DO NOT** start the engine.

#### HINT:

Depending on the model, method of IG ON may be different.

KL G Expired December 1, 2022

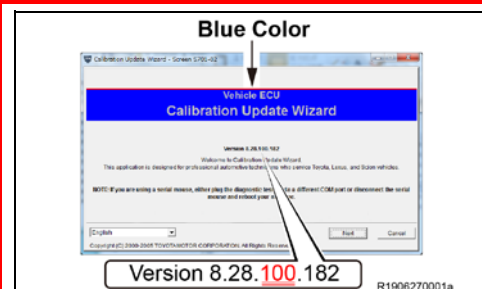
**Click the NEW CID link below to update the DCM**

**Click the NEW CID link below to update the DCM**

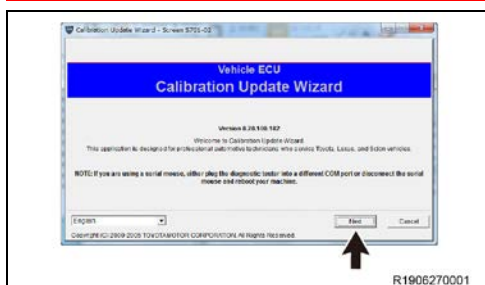
DCM(Telematics System) Calibrations		
DCM Model	Current CID	NEW CID
12DCM	00002.40.06.04.01.91	<a href="#">00002.80.06.04.01.91</a>



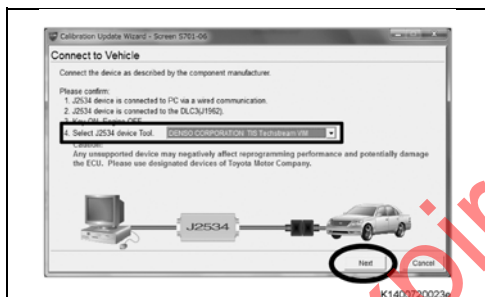
## Check the CUW application



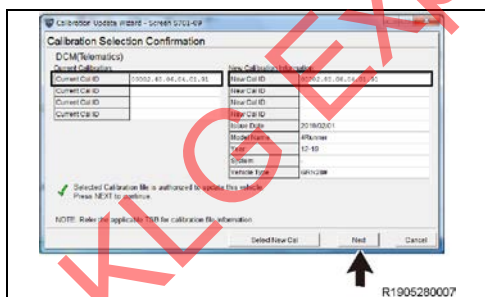
- a) Check if the Special CUW (only for DCM) is downloaded.  
**NOTE:**  
**If Special CUW (only for DCM) has not been downloaded, follow the instructions of section VII.**



- b) When Calibration Update Wizard is launched, click on “Next”.

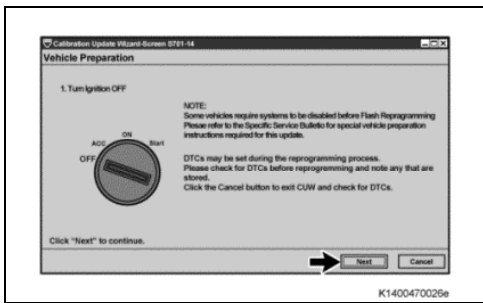


- c) Select a device tool, and then click on "Next".



- d) Confirm that "Current Cal ID" and "New Cal ID" are correct, and then click on "Next".

**NOTE: The calibration IDs will be displayed as shown on the left. Please make sure you *DO NOT* mistake where to check to confirm the IDs.**



- e) Follow the on-screen instructions and turn the IG off, and then click on "Next".

**NOTE:** After "Next" is clicked, a bar showing the progress is displayed. **DO NOT** turn the IG on while the bar is shown.

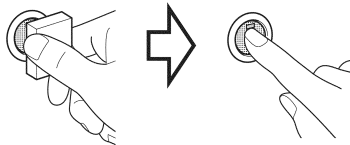


## Vehicle condition before reprogramming DO NOT start the engine.



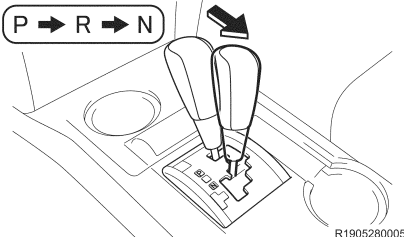
Hold the key directly  
in front of the button

Press the button twice  
with the brake  
released



R1906200002

Neutral position



- f) Turn the IG to the ON position (engine off).

**NOTE:**

**DO NOT** depress the brake pedal.

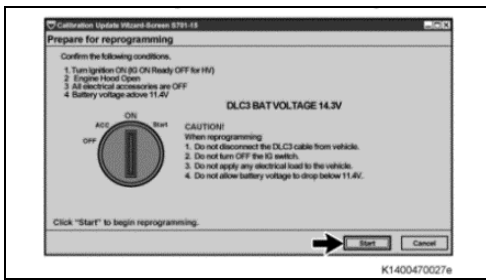
**HINT:**

Depending on the model, method of IG ON may be different.

- g) Move the shift lever to Neutral position.

**NOTE:**

- The reprogramming takes more than 60 minutes to complete, and the vehicle will turn the IG OFF automatically when it has passed about 60 minutes with IG ON while the shift lever is in P position. Therefore, make sure to move the shift lever to N position before starting the reprogramming.
- The alarm sound will be heard if the door is fully closed with IG ON while the shift lever is in Neutral position, on either of the following conditions:
  - The key is outside the vehicle
  - The key battery is low

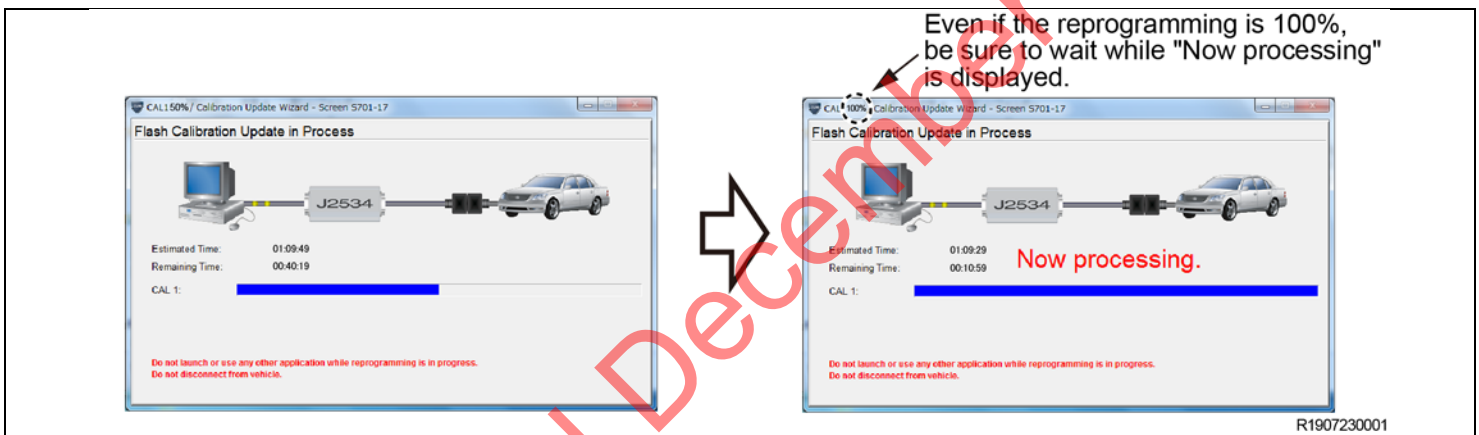


h) Click on "Start".

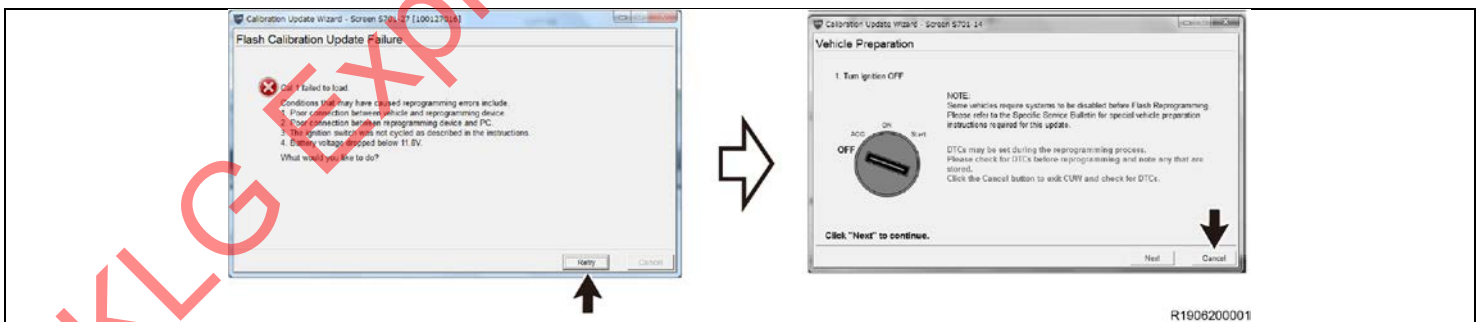
i) While reprogramming, the screen shown on the below is displayed.

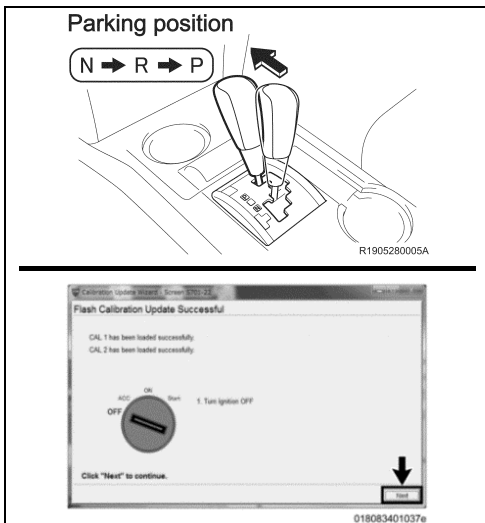
**NOTE:**

- As reprogramming completes within approximately 75 minutes, stay near the vehicle and **DO NOT** allow any third parties to operate the vehicle or Techstream in order to prevent issues from occurring. The following phenomena may be observed while reprogramming due to interrupted communication. However, there is no problem.
  - Vehicle proximity alarming sound.
  - Blackout navigation screen (black).
  - Indication of a warning lamp or error message in the meter.
- "Now processing" is displayed for about 10 minutes. **DO NOT** finish reprogramming until the screen changes.



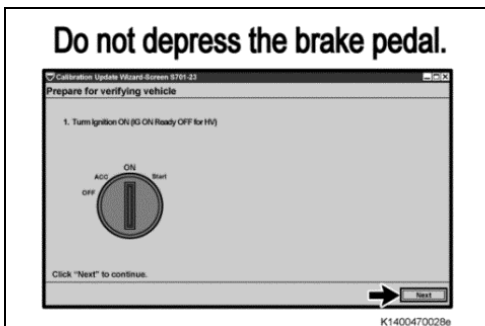
If the following window is displayed and the reprogramming has failed, click on "Retry" and then "Cancel" to finish the reprogramming process. Remove the DCM (telematics transceiver) from the vehicle and perform the reprogramming procedure again only to the DCM (telematics transceiver). Refer to Section XIII





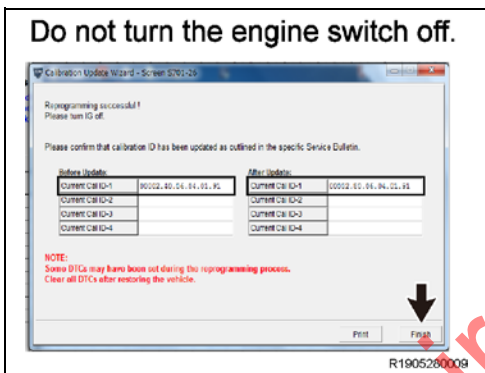
- j) After "Flash Calibration Update Successful" is displayed, move the shift lever to Parking position and turn the IG off and click the "Next" button.

**NOTE:** After "Next" is clicked, a bar showing the progress is displayed. **DO NOT** turn the IG on while the bar is shown.



- k) Follow the on-screen instructions and turn the IG on, and then click the "Next" button.

**NOTE:** **DO NOT** turn the IG on with the brake pedal depressed. Otherwise the engine starts.



- l) After reprogramming, make sure that the "After update "Current Cal ID" is correct.

- m) Click the "Finish" button.



**Click the "Finish" button with the IG on, even though the instruction on the screen says to turn the IG off.**

**After the reprogramming has been completed, refer to Section XV and restore the vehicle.**

## XII. 13/14VI-DCM UPDATE CALIBRATION

STOP

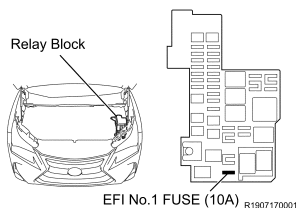
### Vehicle preparation before updating the telematics system

STOP

#### 1. VEHICLE PREPARATION BEFORE UPDATING THE TELEMATICS SYSTEM (Only NX (Gasoline))

a) Turn IG to the OFF position.

##### Only NX (Gasoline)



b) DISCONNECT “EFI No.1 FUSE (10A)” .

##### NOTE:

Failure to remove the EFI No.1 Fuse may cause damage to the fuel pump assembly.

c) Turn the IG to the ON position.

#### 2. UPDATE THE TELEMATICS SYSTEM

Click the NEW CID link below to update the DCM

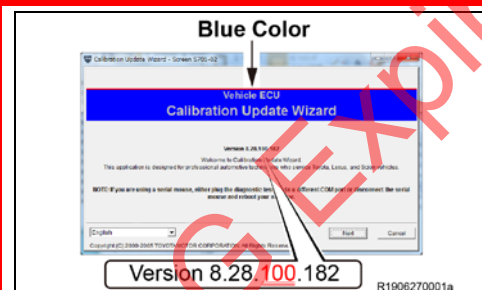
##### DCM(Telematics System) Calibrations

DCM Model	Current CID	NEW CID
13/14 VI-DCM	00003. <b>00</b> .05.01.03.16	<a href="#">00003.20.05.01.03.16</a>
	00003. <b>00</b> .05.01.03.21	<a href="#">00003.20.05.01.03.21</a>
	00003. <b>00</b> .05.01.13.02	<a href="#">00003.20.05.01.13.02</a>
	00003. <b>00</b> .05.01.13.03	<a href="#">00003.20.05.01.13.03</a>
	00003. <b>00</b> .05.01.13.04	<a href="#">00003.20.05.01.13.04</a>
	00003. <b>00</b> .05.01.13.06	<a href="#">00003.20.05.01.13.06</a>

STOP

### Check the CUW application

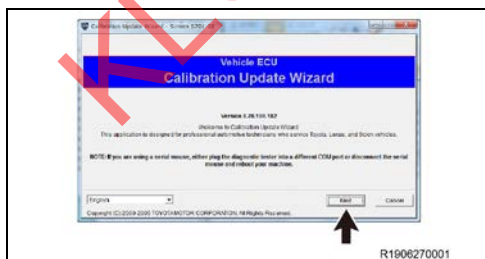
STOP



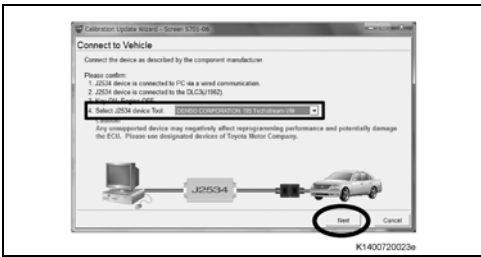
d) Check if the Special CUW (only for DCM)” is downloaded.

##### NOTE:

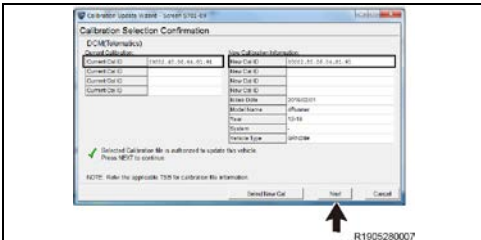
If Special CUW (only for DCM) has not been downloaded, follow the instructions of section VII.



e) When Calibration Update Wizard is launched, click on “Next”.

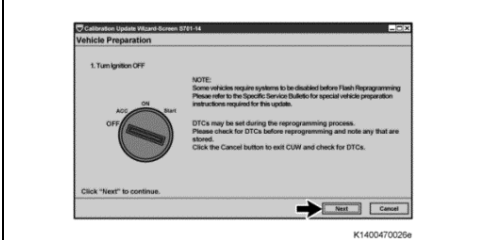


f) Select a device tool, and then click on "Next".



g) Confirm that "Current Cal ID" and "New Cal ID" are correct, and then click on "Next".

**NOTE:** The calibration IDs will be displayed as shown on the left. Please make sure you **DO NOT** mistake where to check to confirm the IDs.

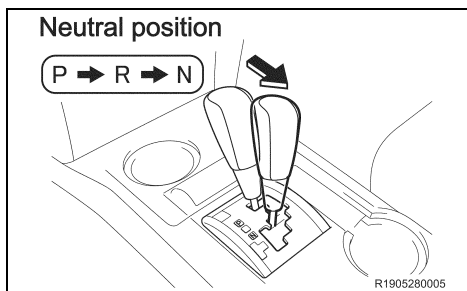


h) Follow the on-screen instructions and turn the IG off, and then click on "Next".

**NOTE:** After "Next" is clicked, a bar showing the progress is displayed. **DO NOT** turn the IG on while the bar is shown.



**Vehicle condition before reprogramming  
DO NOT start the engine.**



i) Turn the IG to the ON position (engine off).

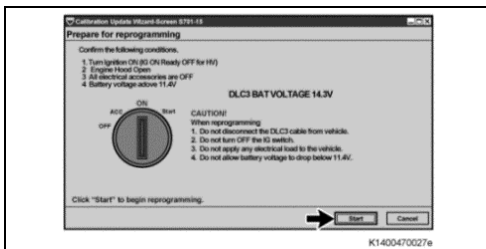
**NOTE:**  
**DO NOT** depress the brake pedal.

j) Move the shift lever to Neutral position.

**NOTE:**

- The reprogramming takes more than 60 minutes to complete, and the vehicle will turn the IG OFF automatically when it has passed about 60 minutes with IG ON while the shift lever is in P position. Therefore, make sure to move the shift lever to N position before starting the reprogramming.
- The alarm sound will be heard if the door is fully closed with IG ON while the shift lever is in Neutral position, on either of the following conditions:
  - The key is outside the vehicle
  - The key battery is low



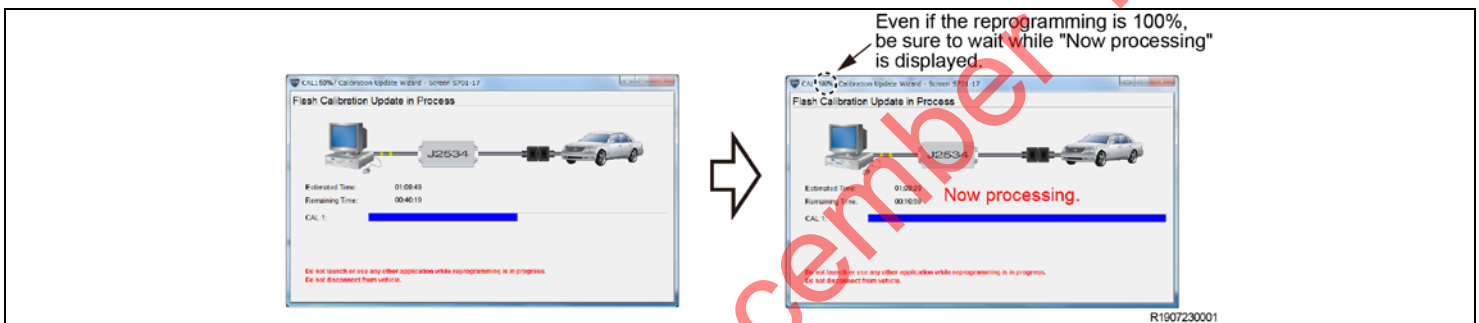


k) Click on "Start".

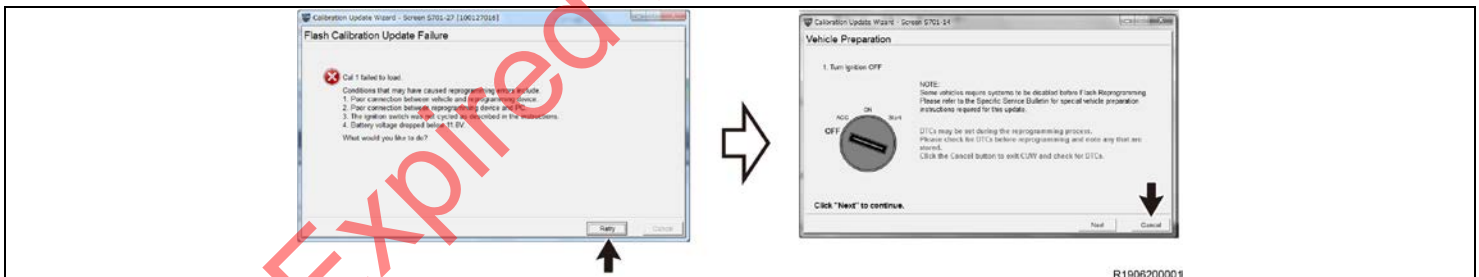
l) While reprogramming, the screen shown on the below is displayed.

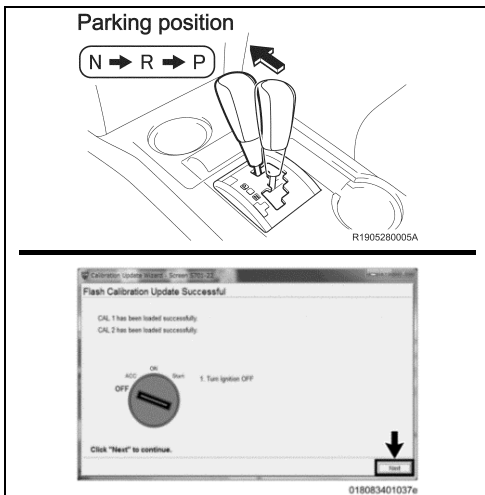
**NOTE:**

- As reprogramming completes within approximately 85 minutes, stay near the vehicle and **DO NOT** allow any third parties to operate the vehicle or Techstream in order to prevent issues from occurring. The following phenomena may be observed while reprogramming due to interrupted communication. However, there is no problem.
  - Vehicle proximity alarming sound.
  - Blackout navigation screen (black).
  - Indication of a warning lamp or error message in the meter.
- "Now processing" is displayed for about 10 minutes. **DO NOT** finish reprogramming until the screen changes.



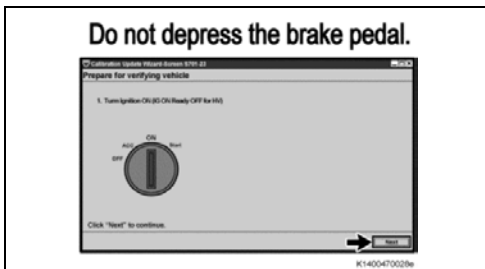
If the following window is displayed and the reprogramming has failed, click on "Retry" and then "Cancel" to finish the reprogramming process. Remove the DCM (telematics transceiver) from the vehicle and perform the reprogramming procedure again only to the DCM (telematics transceiver). Refer to Section XIII





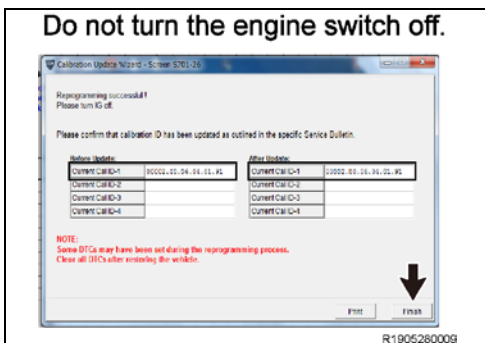
- m) After "Flash Calibration Update Successful" is displayed, move the shift lever to Parking position and turn the IG off and click the "Next" button.

**NOTE:** After "Next" is clicked, a bar showing the progress is displayed. **DO NOT** turn the IG on while the bar is shown.



- n) Follow the on-screen instructions and turn the IG on, and then click the "Next" button.

**NOTE:** **DO NOT** turn the IG on with the brake pedal depressed. Otherwise the engine starts.



- o) After reprogramming, make sure that the "After update "Current Cal ID" is correct.

- p) Click the "Finish" button.

**STOP** Click the "Finish" button with the IG on, even though the instruction on the screen says to turn the IG off.

**After the reprogramming has been completed, refer to Section XV and restore the vehicle.**

### XIII. IF UPDATE CALIBRATION FAILS



If the calibration fails contact your FTS for warranty claim filling instructions

#### 1. REMOVE THE DCM (TELEMATICS TRANSCEIVER)

Go on TIS and refer to the repair manual for how to separate the seat

Path: CELLULAR COMMUNICATION / DCM(TELEMATICS TRANSCEIVER) / REMOVAL

**Note:** you can copy and paste the path above into the TIS search bar to access the instructions quickly

#### 2. CONNECT THE TECHSTREAM TO THE DCM

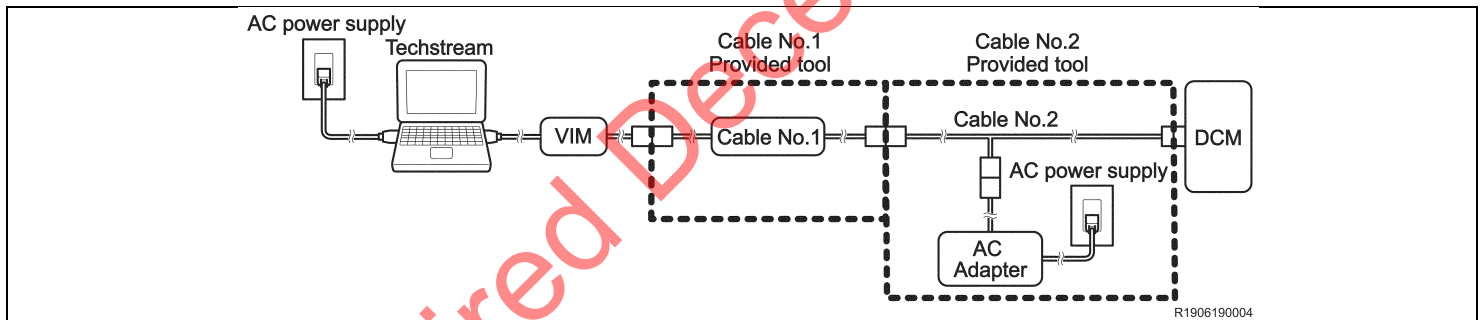
- a) Using a Cable No.1 & No.2 (provided tool), connect the Techstream to the DCM.

**NOTE: DO NOT use these tools except for this campaign.**



Follow the instructions below. Otherwise, the battery voltage will decrease or communication will become disabled, and this may require the replacement of the DCM.

- Turn off the screen saver and power saving mode of the PC.
- Use the external power supply for the PC. (**DO NOT** use the PC's internal battery or vehicle's battery.)
- Ensure that the communication cable connectors are securely connected, the cable is in good condition, and the connection is stable.



### 3. UPDATE THE TELEMATICS SYSTEM

a) Perform a Health Check.

#### NOTE:

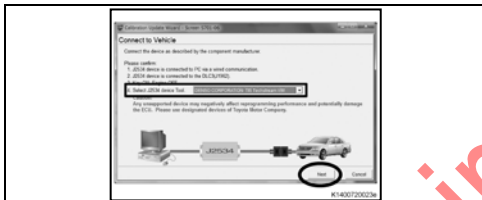
- Only "Telematics" will be shown on the System column.
- Some DTCs may be shown but it does not affect the reprogramming.

Click the NEW CID link below to update the DCM

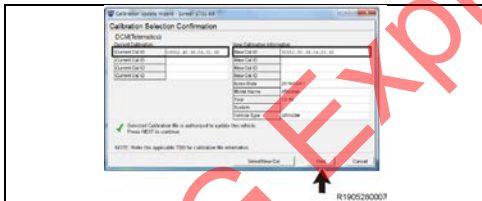
DCM(Telematics System) Calibrations		
DCM Model	Current CID	NEW CID
12DCM	00002. <b>40</b> .06.04.01.91	<a href="#">00002.<b>80</b>.06.04.01.91</a>
13/14 VI-DCM	00003. <b>00</b> .05.01.03.16	<a href="#">00003.<b>20</b>.05.01.03.16</a>
	00003. <b>00</b> .05.01.03.21	<a href="#">00003.<b>20</b>.05.01.03.21</a>
	00003. <b>00</b> .05.01.13.02	<a href="#">00003.<b>20</b>.05.01.13.02</a>
	00003. <b>00</b> .05.01.13.03	<a href="#">00003.<b>20</b>.05.01.13.03</a>
	00003. <b>00</b> .05.01.13.04	<a href="#">00003.<b>20</b>.05.01.13.04</a>
	00003. <b>00</b> .05.01.13.06	<a href="#">00003.<b>20</b>.05.01.13.06</a>



b) When Calibration Update Wizard is launched, click on "Next".

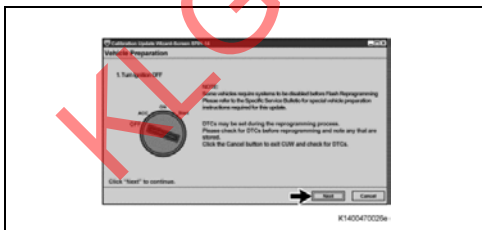


c) Select a device tool, and then click on "Next".



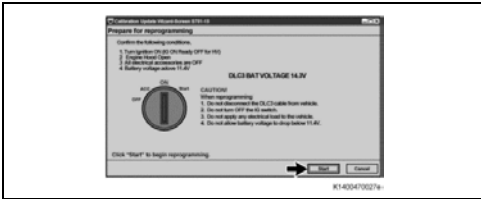
d) Confirm that "Current Cal ID" and "New Cal ID" are correct, and then click on "Next".

**NOTE:** The calibration IDs will be displayed as shown on the left. Please make sure you **DO NOT** mistake where to check to confirm the IDs.



e) Click on "Next".

**NOTE:** It is **NOT** necessary to follow the instructions on the screen of Techstream.



f) Click on "Start".

**NOTE:** It is **NOT** necessary to follow the instructions on the screen of Techstream.

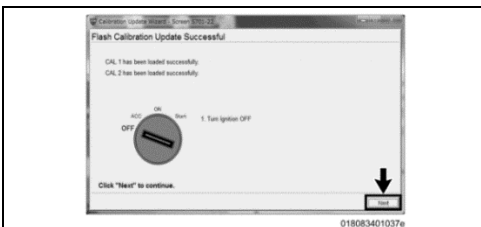
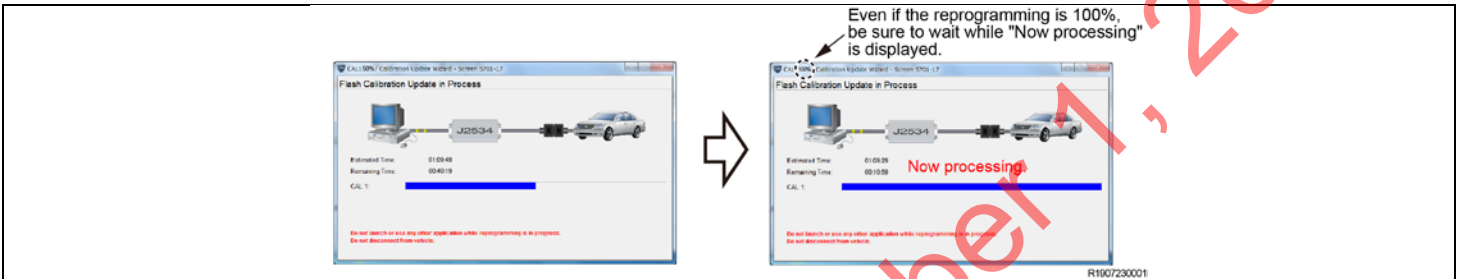
g) While reprogramming, the screen shown on the below is displayed.

**NOTE:**

As reprogramming completes within approximately 75 minutes (12DCM) or 85 minutes (13/14VI-DCM), stay near the vehicle and **DO NOT** allow any third parties to operate the vehicle or Techstream in order to prevent issues from occurring.

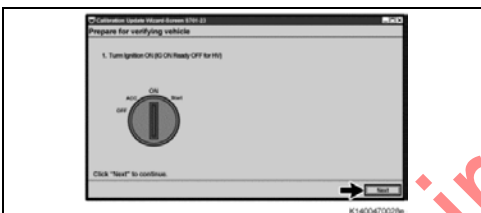
The following phenomena may be observed while reprogramming due to interrupted communication.

- "Now processing" is displayed for about 10 minutes. **DO NOT** finish reprogramming until the screen changes.



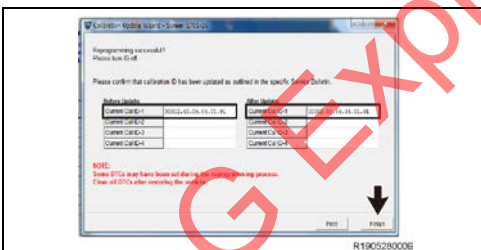
h) After "Flash Calibration Update Successful" is displayed, click the "Next" button.

**NOTE:** After "Next" is clicked, a bar showing the progress is displayed.



i) Click the "Next" button.

**NOTE:** It is **NOT** necessary to follow the instructions on the screen of Techstream.



j) After reprogramming, make sure that the "After update "Current Cal ID" is correct.

k) Click the "Finish" button.

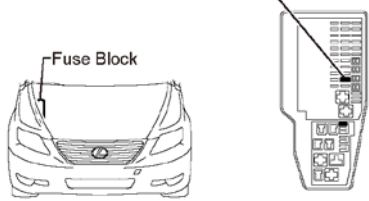
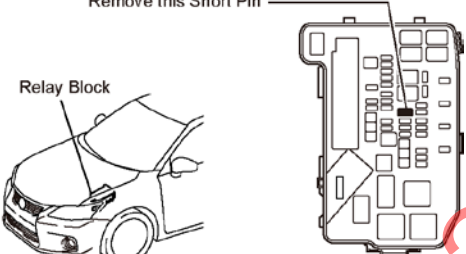
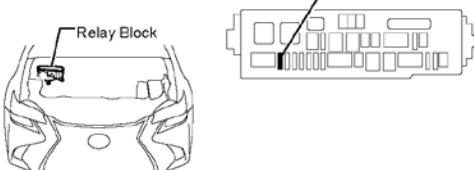
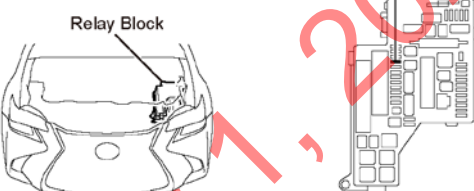
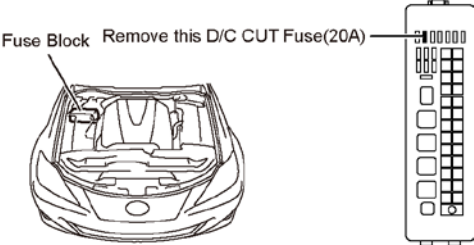
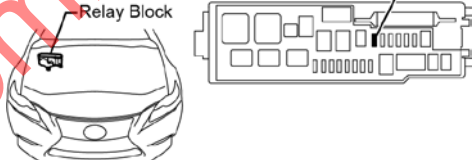
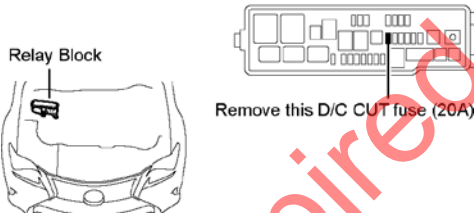
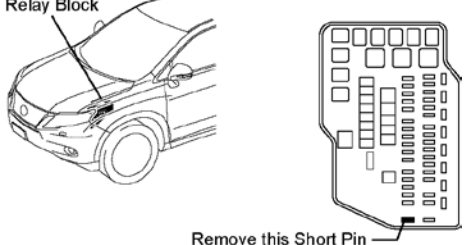
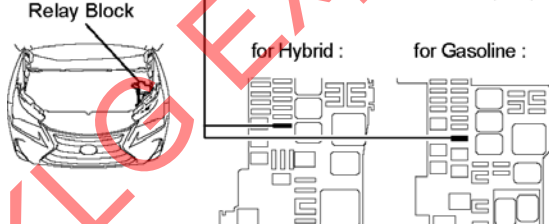
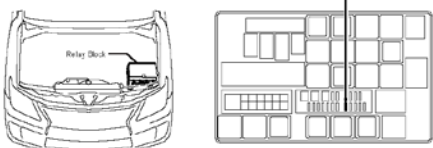
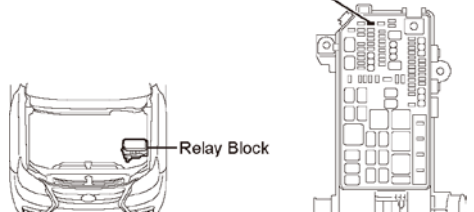
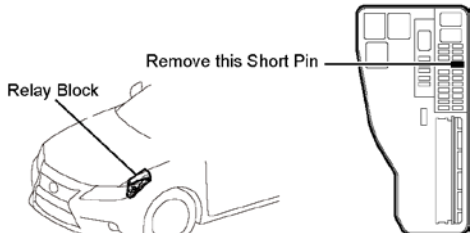
#### 4. INSTALL THE DCM (TELEMATICS TRANSCEIVER)

Go on TIS and refer to the repair manual for how to separate the seat

Path: CELLULAR COMMUNICATION / DCM(TELEMATICS TRANSCEIVER) / INSTALLATION

**Note:** you can copy and paste the path above into the TIS search bar to access the instructions quickly

## XIV. D/C CUT AND SHORT PIN LOCATION

<p><b>LS600hL,LS460L,LS460 (UVF4#,USF4#)</b></p> <p>Remove this D/C CUT fuse (30A)</p> 	<p><b>CT200h (ZWA10)</b></p> <p>Remove this Short Pin</p> 
<p><b>GS350 (GRL1#)</b></p> <p>Remove D/C CUT Fuse (30 A)</p> 	<p><b>GS450h (GWL1#)</b></p> <p>Remove D/C CUT Fuse (30 A)</p> 
<p><b>IS250,IS350,IS250C,IS350C,IS F (GSE2#,USE20)</b></p> <p>Fuse Block Remove this D/C CUT Fuse(20A)</p> 	<p><b>IS250,IS350,IS300 (GSE3#,ASE3#)</b></p> <p>Remove D/C CUT Fuse (30 A)</p> 
<p><b>RC F,RC350,RC300,RC200T (USC1#,GSC1#,ASC1#)</b></p> <p>Relay Block Remove this D/C CUT fuse (20A)</p> 	<p><b>RX350/450h (GGL1#,GYL1#)</b></p> <p>Relay Block Remove this Short Pin</p> 
<p><b>NX200t,NX300,NX300h (AGZ1#,AYZ1#)</b></p> <p>Relay Block Remove this D/C CUT FUSE (20A)</p> <p>for Hybrid : for Gasoline :</p> 	<p><b>LX570 (URJ201)</b></p> <p>Before Sep. 2015 Production Remove Short Pin</p> 
<p><b>GX460 (URJ150)</b></p> <p>Remove this Short Pin</p> 	<p><b>ES350,ES300h (GSV6#,AVV6#)</b></p> <p>Relay Block Remove this Short Pin</p> 

## XV.COMPLETE REPAIR

### 1. DISCONNECT THE GR8/DCA

### 2. RESTORE THE VEHICLE

- a) Reinstall the “EFI No.1 FUSE (10A)”. (Only NX (Gasoline))
- b) (IF YOU REPROGRAM 12DCM)
  - (1) Reinstall the “D/C CUT FUSE” or “SHORT PIN” .
  - (2) Disconnect cable from negative battery terminal.  
(Only GS, GS HV, IS (Not included IS-C, IS-F), RC, RC-F, CT, NX, NX HV, GX, ES, ES HV)
  - (3) Connect each connector of the front passenger seat. Refer to repair manual for installation.  
(Only GS, GS HV, IS (Not included IS-C, IS-F), RC, RC-F, CT, NX, NX HV, GX, ES, ES HV)  
Depending on seat type, you may need to perform certain initializations (such as Zero Point Calibration) refer to the repair manual for details
  - (4) Connect cable to negative battery terminal.  
(Only GS, GS HV, IS (Not included IS-C, IS-F), RC, RC-F, CT, NX, NX HV, GX, ES, ES HV)
  - (5) Some systems need to be initialized after the cable is reconnected. Refer to repair manual for initialization.  
(Only GS, GS HV, IS (Not included IS-C, IS-F), RC, RC-F, CT, NX, NX HV, GX, ES, ES HV)



### 3. PERFORM VERIFICATION HEALTH CHECK

- a) Using a Techstream, perform a Health Check.
- b) Clear DTC's that may have set during the re-flash procedure.
- c) Re-run the Health Check to confirm that no DTC's reappear.



**THIS VERIFICATION HEALTH CHECK IS NECESSARY to update the results and CID's to the National database.**

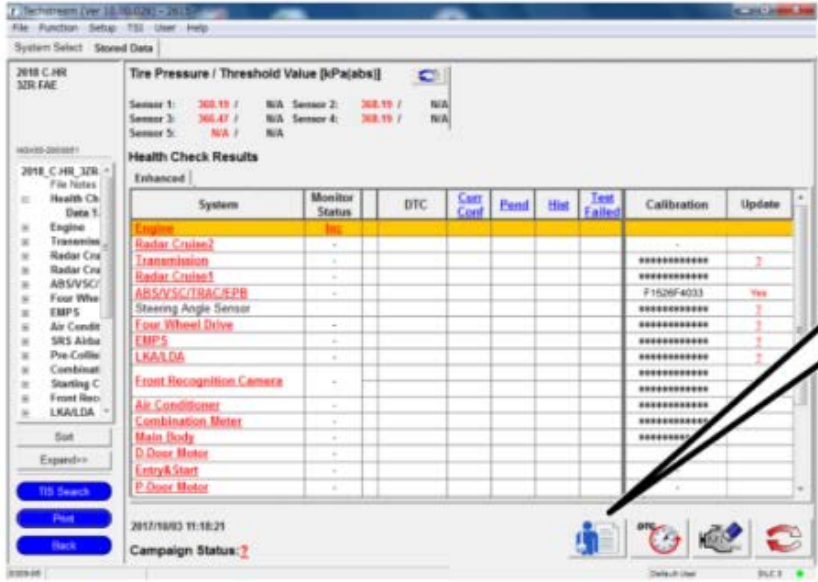
### 4. CONFIRM CID UPDATE

- a) On the Stored Data tab, confirm the following for the DCM:  
**The calibration ID is the latest version**



## 5. PRINT CUSTOMER HEALTH CHECK REPORT

- From the Stored Data tab, select the Customer Health Check Report button (TIS will launch when button is pressed).



**Customer Health Check Button**

2018 CAMRY  
3.5L IAT 24V  
2018 CAMRY 3.5L IAT 24V

Tire Pressure / Threshold Value [kPa(abs)]

Sensor	Value	Unit	Threshold
Sensor 1	308.19	kPa	308.19
Sensor 2	308.19	kPa	308.19
Sensor 3	308.19	kPa	308.19
Sensor 4	308.19	kPa	308.19
Sensor 5	N/A	kPa	N/A

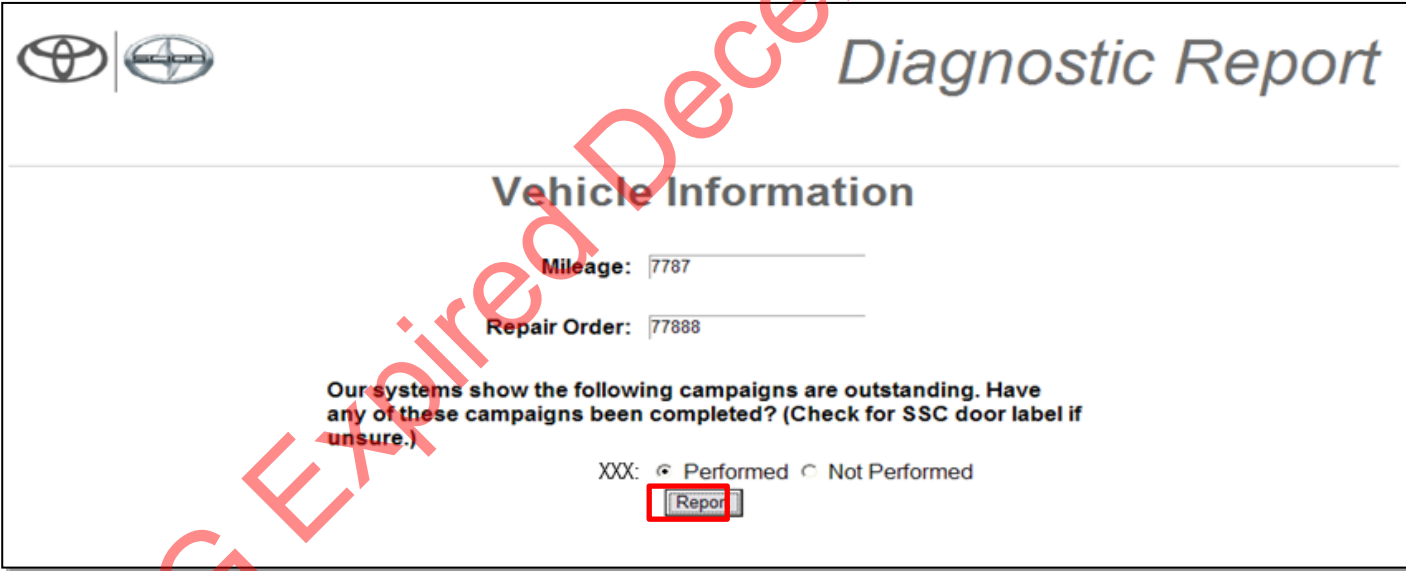
Health Check Results

System	Monitor Status	DTC	Conf	Pass	Fail	Test Failed	Calibration	Update
Engine	Inc.							
Radar Cruise2								
Transmission								
Radar Cruise								
ABS/ESC								
Four Wheel								
EMPS								
Air Condition								
SRS Airbag								
Pre-Collision								
Combustion								
Starting C								
Front Rest								
LKAS/LDA								
Front Recognition Camera								
Air Conditioner								
Combustion Meter								
Main Body								
D-Over Motor								
Entry&Start								
E-Over Motor								

2017/10/03 11:10:21  
Campaign Status: 2

017346901019

- Log in to TIS.
- Input Vehicle Mileage and Repair Order number.
- Check the "Performed" campaign button for campaign KLG.
- Select the Report button.



**Diagnostic Report**

**Vehicle Information**

Mileage: 7787

Repair Order: 77888

Our systems show the following campaigns are outstanding. Have any of these campaigns been completed? (Check for SSC door label if unsure.)

XXX: ☒ Performed ☐ Not Performed

**Report**


- Confirm Customer Health Check Report information is correct.
- Print Customer Health Check Report from TIS.
- Sign and provide to the customer.

### NOTE:


If Service Mode screen is shown on the navigation screen, press OK to cancel service mode.

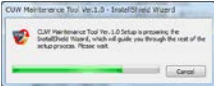





## XVI. REINSTALL THE REGULAR CUW

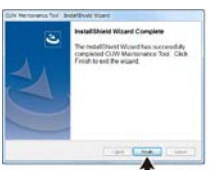


Reinstall Regular CUW after Completion









**1. RUN THE INSTALLER**

**2. SELECT THE REGULAR CUW APPLICATION**

- a) Select "Regular CUW (except for DCM)".
- b) Click on the "Next" button to install the regular CUW application.

**3. COMPLETE INSTALLATION**

- a) Click on the "Finish" button to finish.

**NOTE: Use the regular CUW application after installing it to the personal computer which has Techstream.**

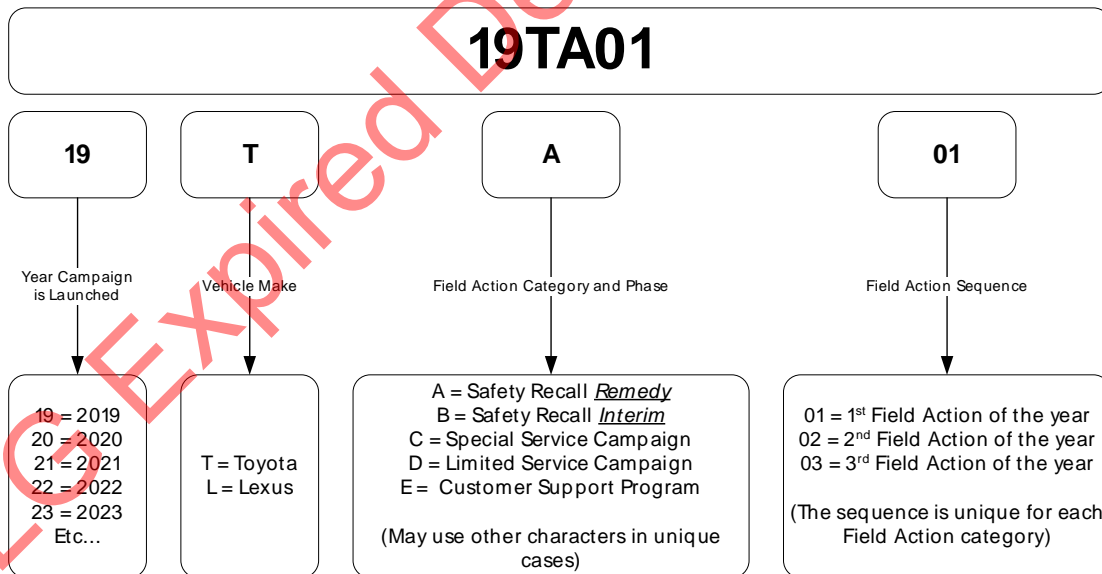
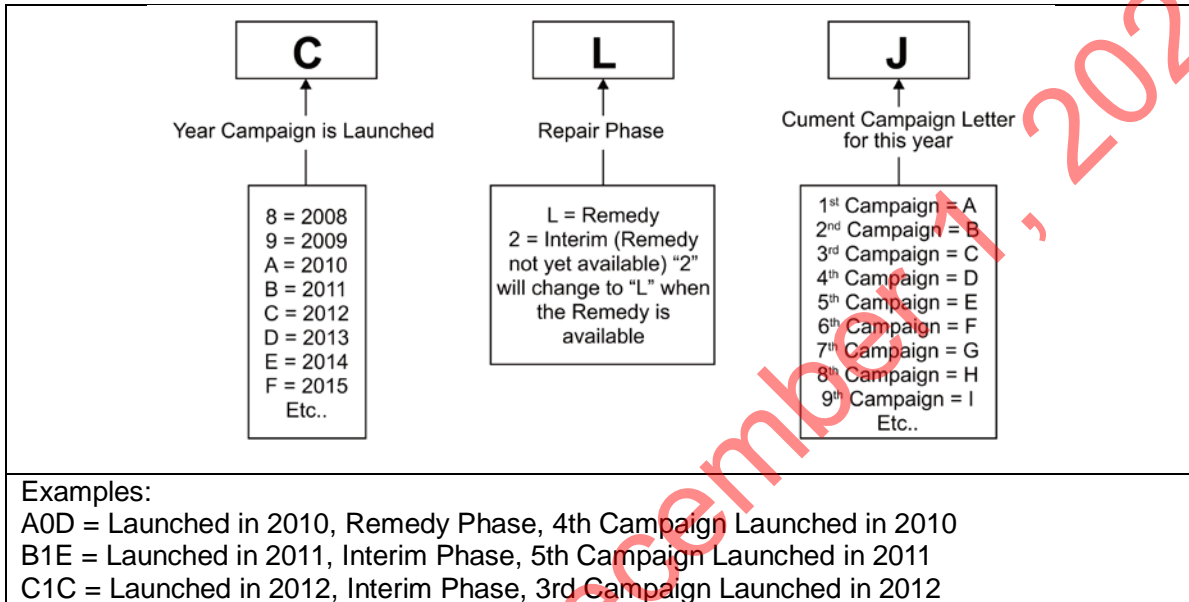
## ◀ VERIFY REPAIR QUALITY ▶

- Confirm the calibration has been updated
- If the seat was removed, confirm it has been reinstalled correctly
- If the DCM was removed, confirm it has been reinstalled correctly

If you have any questions regarding this update, please contact your area representative.

## XVII. APPENDIX

### A. CAMPAIGN DESIGNATION DECODER



Examples:

19TA01 = Launched in 2019, Toyota, Safety Recall Remedy Phase, 1<sup>st</sup> Safety Recall Launched in 2019

20TC02 = Launched in 2020, Special Service Campaign, 2<sup>nd</sup> Special Service Campaign Launched in 2020

21TE05 = Launched in 2021, Customer Support Program, 5<sup>th</sup> Customer Support Program Launched in 2021

### B. CAMPAIGN PARTS DISPOSAL

As required by Federal Regulations, please make sure all campaign parts (original parts) removed from the vehicle are disposed of in a manner in which they will not be reused, ***unless requested for parts recovery return.***