



NUMBER: 23-028-22

GROUP: 23 - Body

DATE: July 13, 2022

This bulletin is supplied as technical information only and is not an authorization for repair. No part of this publication may be reproduced, stored in a retrieval system, or transmitted, in any form or by any means, electronic, mechanical, photocopying, or otherwise, without written permission of FCA US LLC.

This Technical Service Bulletin (TSB) has also been released as a Rapid Service Update (RSU) 22-133, date of issue July 13, 2022. All applicable Sold and Un-Sold RSU VINs have been loaded. To verify this RSU service action is applicable to the vehicle, use VIP or perform a VIN search in DealerCONNECT/Service Library. All repairs are reimbursable within the provisions of warranty. This RSU will expire 18 months after the date of issue.

SUBJECT:

Right Front A-Pillar Sealing Plug Missing

OVERVIEW:

This bulletin involves inspecting and if necessary, installing the right front A-Pillar sealing plug and removing the door to check electrical connector.

MODELS:

2022 (KL) Jeep Cherokee

NOTE: This bulletin applies to vehicles within the following markets/countries: North America.

NOTE: This bulletin applies to vehicles built on or before May 17, 2022 (MDH 0517XX).

SYMPTOM/CONDITION:

The customer may notice or describe they see a hole where a plug should be when opening the right front door of the vehicle.

DIAGNOSIS:

If a customer's VIN is listed in VIP or your RSU VIN list, perform the repair. **(This RSU only applies to vehicles on the RSU VIN list).**

PARTS REQUIRED:

Qty.	Part No.	Description
1 (AR)	68164786AA	Plug, Sealing

REPAIR PROCEDURE:

1. Open the right front door and inspect for the sealing plug (Fig. 1) .



Fig. 1
A-Pillar Sealing Plug Location

2. Was the sealing plug in the A-pillar (Fig. 2) ?
 - YES>>> This bulletin has been completed, use inspect LOP (23-00-41-93) to close the active RSU.
 - NO>>> Proceed to [Step 3](#).

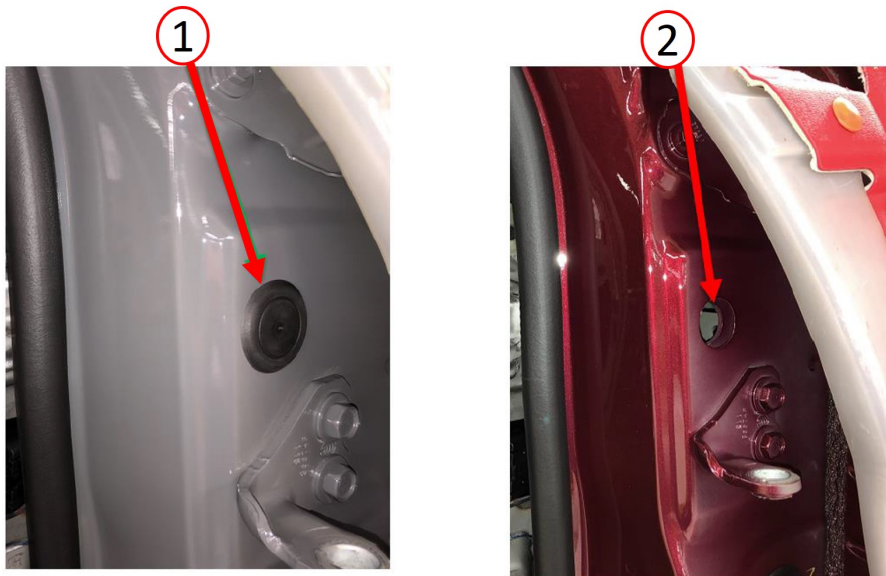


Fig. 2
Sealing Plug Installed or Missing

- 1 - Properly Installed Sealing Plug
2 - Missing Sealing Plug

3. Remove the right front door. Refer to the detailed service procedures available in DealerCONNECT> Service Library under: Service Info> 23 - Body / Doors - Front / Door / Removal.

4. Remove wiring harness from A-pillar (Fig. 3) .

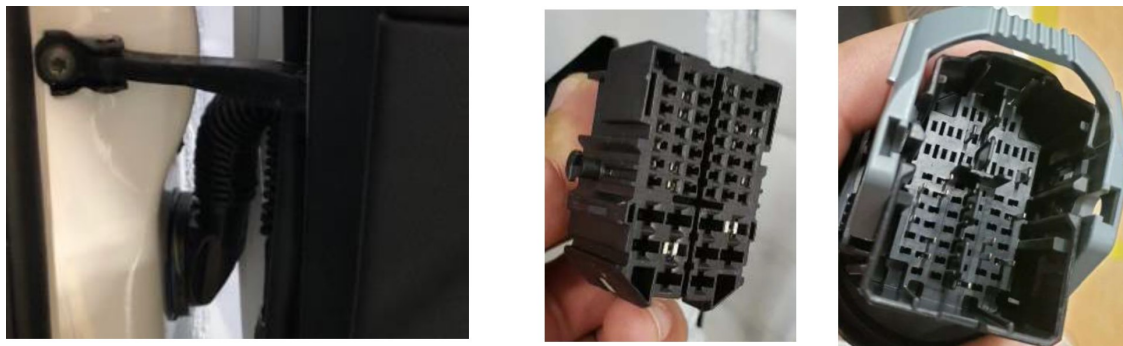


Fig. 3
Door Electrical Connector

5. Inspect electrical connection for corrosion (Fig. 3) .

6. Clean the electrical connection (Fig. 3) .

NOTE: Use Mopar electrical cleaner or equivalent.

7. Apply dielectric connector grease to connector.

NOTE: Use (Nyogel 760G® Dielectric Grease or Equivalent).

8. Install the missing sealing plug in the A-pillar (Fig. 2) .

9. Reconnect the electrical connector while installing the right front door. Refer to the detailed service procedures available in DealerCONNECT> Service Library under: Service Info> 23 - Body / Doors - Front / Door / Installation.

10. Verify all door functions.

POLICY:

Reimbursable within the provisions of the warranty.

TIME ALLOWANCE:

Labor Operation No:	Description	Skill Category	Amount
23-00-41-93	Sealing Plug - Inspect (0 - Introduction)	6 - Electrical and Body Systems	0.2 Hrs.
23-00-41-94	Electrical Connector and Sealing Plug - Inspect and Install (0 - Introduction)	6 - Electrical and Body Systems	0.4 Hrs.

FAILURE CODE:

ZZ	Service Action
----	----------------