



RYKER YAW Rate - SAS Sensor Faults - 137209

[Printable Version](#)

Rate This Article

(Average Rating: No Rating)

Version 4

Language

English ▼

[Show Properties](#)**Summary:**

YAW rate sensor faults might be triggered due to loose front suspension components.

Type:

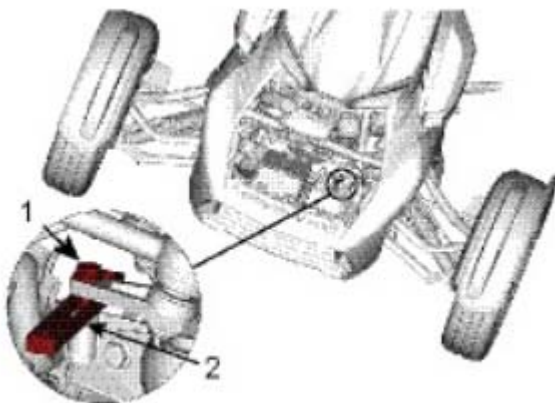
General

TST Detail:**Problem:**

A high number of Rykers with stability related fault codes have been reported. These 3 faults (C0063 and/or C0051 and *C006C) can be triggered if front suspension as excessive play **or** SAS zeroes setting not learned properly from the production line.

Solution:**Code set at PDI or low miles;**

- Simply lock the steering system on the LH pitman arm and do a SAS reset with BUDS2. Use Alignment screw (P/N 529 036 490)



1. Alignment screw
2. Steering column spacer

Code set with higher mileage;

- If the unit has some miles and these codes (C0063 and/or C0052 and *C006C) are triggered, the first thing to have a look at the Monitoring ID. The ID18 is a very good indicator that there is an excessive play of the front steering components. Simply click on the fault and then environmental data.
- Before replacing any parts, save the BUDS2 file with the steering locking tool installed and attach it to the technical case

Active/Occurred ▲ Possible

Fault Codes

Module	State	Code	Description	Detailed Description
VCM	Occurred	C0063		

More Details...

Environmental Data | Possible Causes | Service Actions | DFC

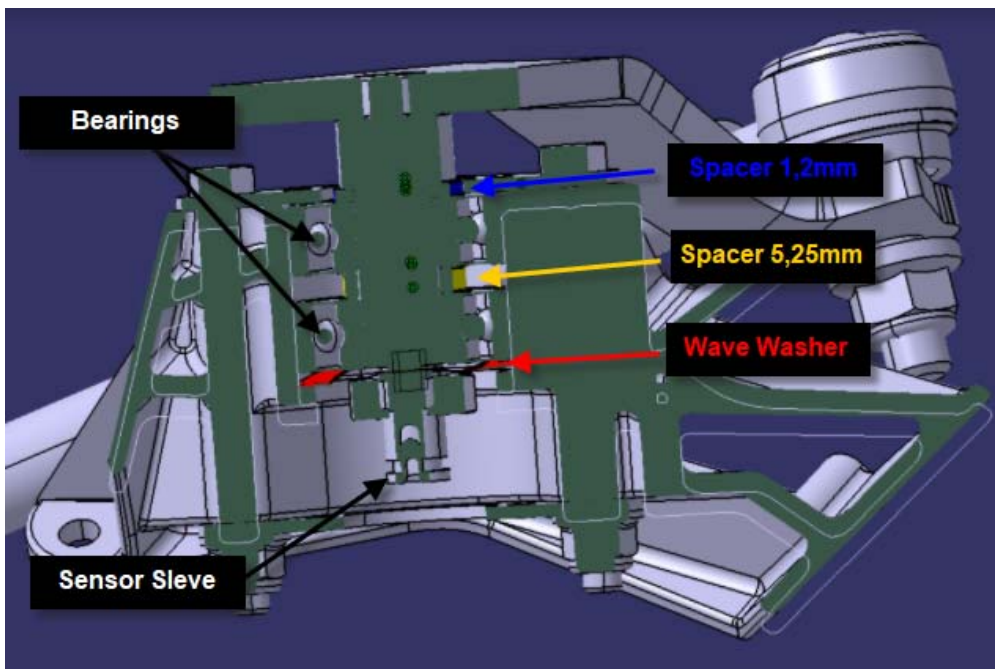
Parameter Name	Value	Unit
Engine Running Time	2335	MIN
Failure Counter 1	8	
Failure Counter 2	0	
Monitoring ID	18	
Odometer	1909	km
System Status 1		

- If monitoring ID18 is there, replace the following;

Order kit P/N 219800513 (Note that this kit P/N is already installed from production on MY22 & up units)

- Kit Parts List:

- 1x 219800512 - Spacer 1.2 mm
- 1x 219800511 - Spacer 5.25 mm
- 2x 709402450 - Bearing
- 1x 219800510 - Wave washer
- 1x 709401526 - Sensor Sleeve
- 1x 487802246 - Generic Sheet



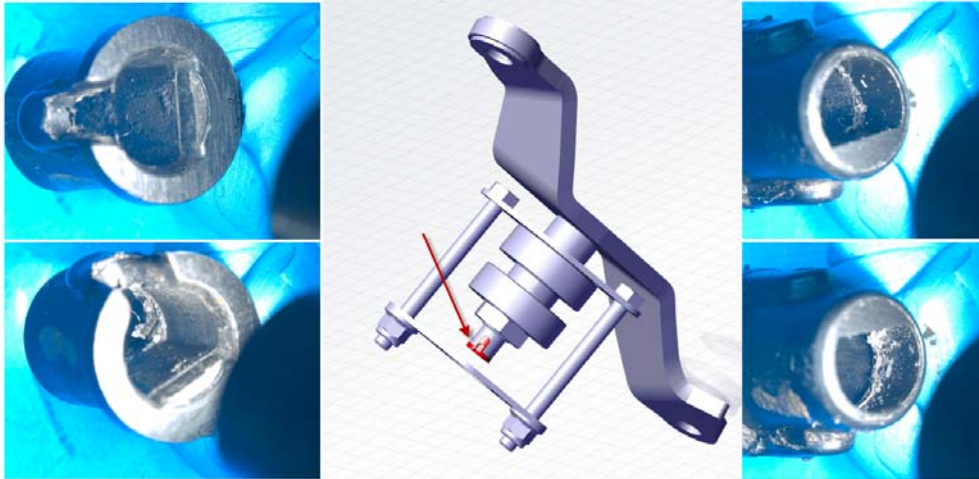
- Once parts are replaced, lock the steering system on the LH pitman arm and do a SAS reset with BUDS2. Use Alignment screw (P/N 529 036 490)

Wheel alignment is critical and these faults can be triggered if the alignment is off. Wheel alignment has to be done with the BRP laser tool, refer to the shop manual for tool P/N and alignment specs. It is recommended to align Rykers once a year (10000km / 6000 miles).

Inspection Procedure:

SAS Bushing;

- A good sign that the steering components are too loose is that the SAS plastic bushing will be worn out by the excess of axial movements. The bushing is a tight fit on the SAS shaft. It needs to be replaced if you can easily remove it with your fingers. Here are some examples;



Other things to consider;

- Wheel alignment (Use BRP laser kit as mentioned in the manual shop)
- LH steering column half bushing
- loose rod end
- Damaged suspension components by an impact

If the problem remains there, open a technical case including a BUDS2 report and wheel alignment measurement (reading A-B-C).

- Below is attached a video showing an excessive play of the pitman arms and SAS bushing

Warranty:

Normal & BEST warranty applies
Use job code 07-07

Attachment:

SAS Bushing and pitman arms bearings



First Published By: Eric Fauteux **on** 2019-11-08

Last Modified By: Thomas Lerch **on** 2022-12-12