



INFINITI

TECHNICAL SERVICE BULLETIN

Classification:

EC22-008

Reference:

ITB22-042

Date:

December 6, 2022

MIL ON WITH DTC P0448 STORED IN THE ECM

APPLIED VEHICLES: 2021-2023 QX50 (J55)
2022-2023 QX55 (FJ55)

IF YOU CONFIRM

The MIL is ON with DTC P0448 (VENT CONTROL VALVE) stored in the ECM.

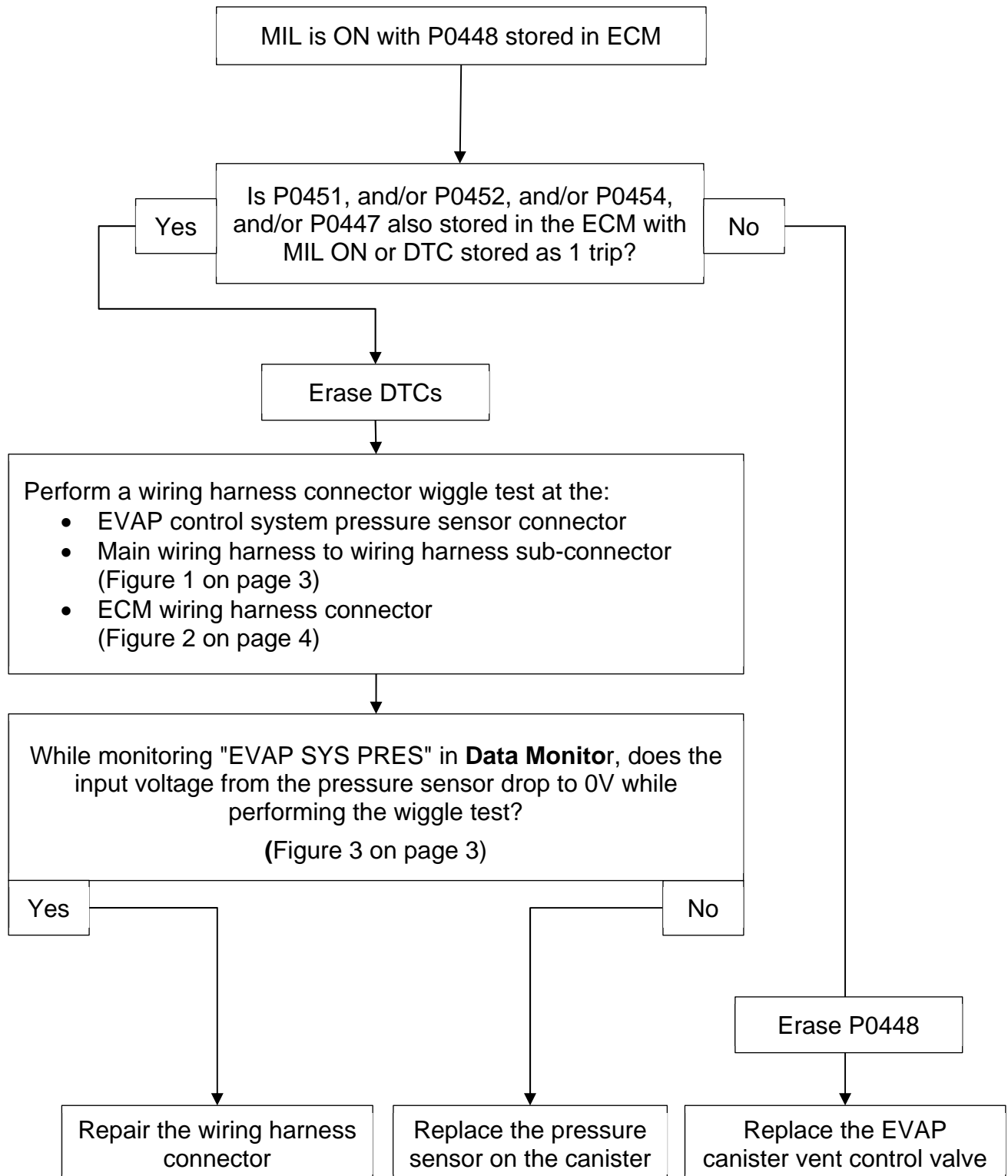
ACTION

See **Repair Overview** on page 2 for diagnostic procedure.

IMPORTANT: The purpose of **ACTION** (above) is to give you a quick idea of the work you will be performing. You **MUST** closely follow the entire **SERVICE PROCEDURE** as it contains information that is essential to successfully completing this repair.

Bulletins are intended for use by qualified technicians, not 'do-it-yourselfers'. Qualified technicians are properly trained individuals who have the equipment, tools, safety instruction, and know-how to do a job properly and safely. **NOTE:** If you believe that a described condition may apply to a particular vehicle, **DO NOT** assume that it does. See your Infiniti retailer to determine if this applies to your vehicle.

Repair Overview



SERVICE PROCEDURE

1. Erase DTCs.
2. Is P0451, and/or P0452, and/or P0454, and/or P0447 also stored in the ECM with MIL ON or DTC stored as 1 trip?
 - **Yes:** Erase DTCs, and then proceed to step 3.
 - **No:** Replace the EVAP canister vent control valve, and then skip to step 6.
3. Navigate C-III plus to **Data Monitor**, and then select **EVAP SYS PRES**.
4. While monitoring **EVAP SYS PRES** voltage with a line graph (Figure 3 on page 4), perform a wiring harness connector wiggle tests of the:
 - EVAP control system pressure sensor connector (Figure 1).
 - Main wiring harness to wiring harness sub-connector (Figure 1).
 - ECM wiring harness connector (Figure 2 on page 4).
5. Does the input voltage from the pressure sensor drop to 0V while performing the wiggle test?
 - **Yes:** Repair the associated wiring harness connector.
 - **No:** Replace the pressure sensor on the canister.
6. Erase the DTCs.

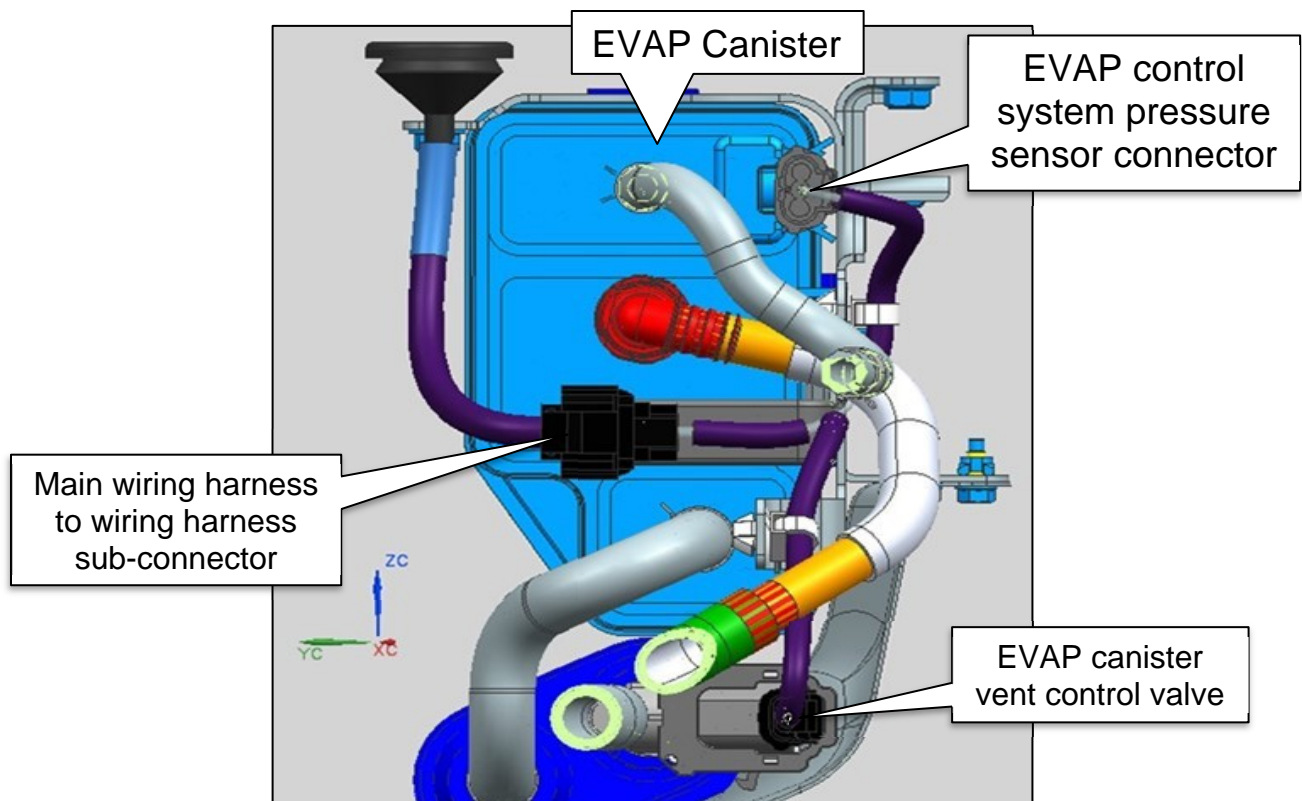
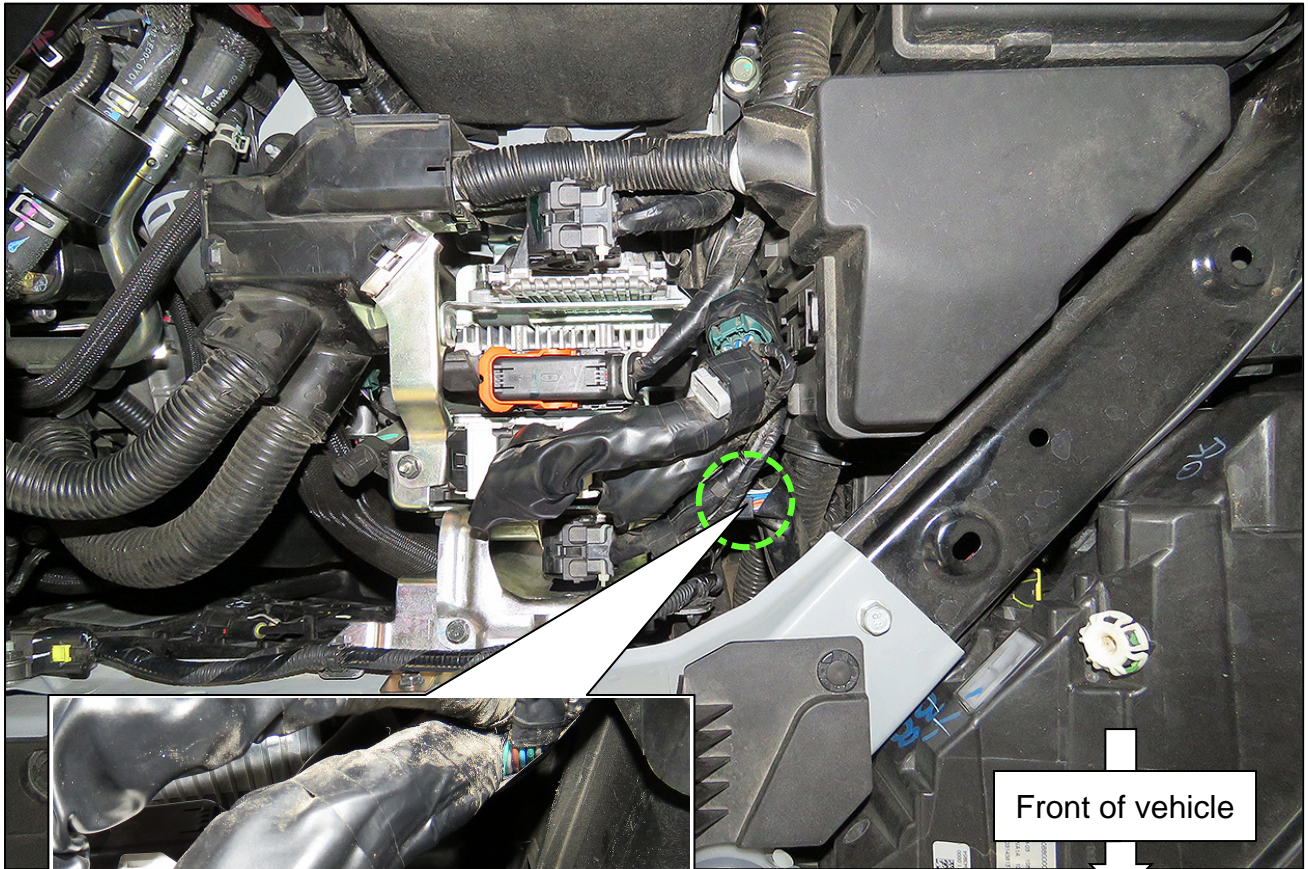


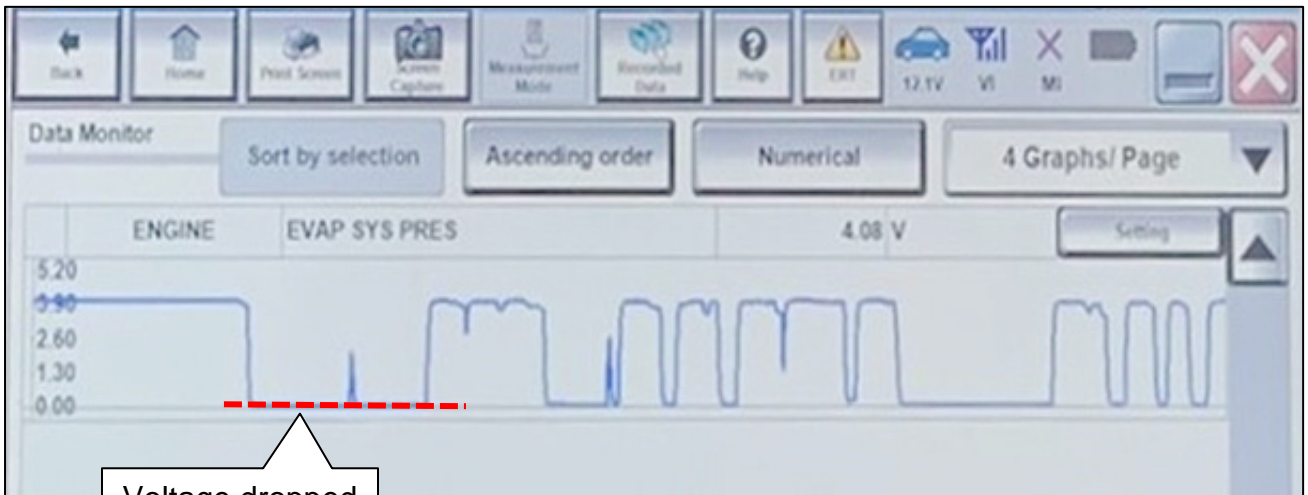
Figure 1



Front of vehicle

Figure 2

ECM wiring harness connector



Voltage dropped to 0V

Figure 3

PARTS INFORMATION

DESCRIPTION	PART NUMBER	QUANTITY
EVAP Canister Vent Control Valve	14935-JF01C	1 If Needed

CLAIMS INFORMATION

Submit a Primary Part (PP) type line claim using the following claims coding:

DESCRIPTION	PFP	OP CODE	SYM	DIA	FRT
Perform Wiggle Test on Connectors	(1)	FX68AA	ZE	32	0.4

- (1) Reference the electronic parts catalog and use the EVAP Canister Vent Control Valve (14935-*****) as the Primary Failed Part (PFP).

HINT: The operation code (Op Code) is to be claimed with a Primary Failed Part Repair.

AMENDMENT HISTORY

PUBLISHED DATE	REFERENCE	DESCRIPTION
December 6, 2022	ITB22-042	Original bulletin published

