



# Technical Service Bulletin

<b>SUBJECT:</b>  <b>WIRELESS CHARGER STOPS CHARGING WHEN USING iPhone 12 OR LATER</b>			No: <b>TSB-22-13-004</b>
			DATE: <b>December 2022</b>
			MODEL: <b>2022-23 Outlander 2023 Outlander PHEV</b>
<b>CIRCULATE TO:</b>	<input type="checkbox"/> GENERAL MANAGER	<input checked="" type="checkbox"/> PARTS MANAGER	<input checked="" type="checkbox"/> TECHNICIAN
<input checked="" type="checkbox"/> SERVICE ADVISOR	<input checked="" type="checkbox"/> SERVICE MANAGER	<input checked="" type="checkbox"/> WARRANTY PROCESSOR	<input type="checkbox"/> SALES MANAGER

## **PURPOSE**

This Campaign Bulletin provides instructions to reprogram the wireless charger with the latest software.

## **BACKGROUND**

Wireless charging technology from Apple which was built into some iPhone 12 or later phones have Magsafe. Magnets inside the iPhone with Magsafe absorb electromagnetic waves emitted from the wireless chargers. Wireless chargers recognize the magnets of Magsafe as foreign material and stop charging. Please reprogram the software on **all in stock vehicles** and **upon all visits of applicable vehicles**.

## **AFFECTED VEHICLES**

All 2022 Outlander

Certain 2023 Outlander (VIN Cut-off JA4J4VA89PZ015655)

Certain 2023 Outlander PHEV (VIN Cut-off JA4T5VA96PZ015661)



## **ATTENTION:**

- Turn off all electrical devices to minimize the vehicle's electrical load. Also use an external power source to ensure that the vehicle battery maintains the specified voltage during reprogramming. Low voltage of the auxiliary battery may cause incomplete reprogramming and should that occur the ECU may require replacement.
- Write down all the customer's electrical device settings such as A/C and radio before reprogramming and restore them after reprogramming.
- Connect the MUT-3 to an AC power source to prevent internal battery discharge.
- Before using, make sure the USB cable and MUT-3 main harness are not damaged.
- Do not perform maintenance work in the engine room during reprogramming.  
The cooling fan may operate while reprogramming. —
- Check the All DTC after reprogramming and erase them (if any).

Copyright 2022, Mitsubishi Motors North America, Inc.

The information contained in this bulletin is subject to change. For the latest version of this document, go to the Mitsubishi Dealer Link, MEDIC, or the Mitsubishi Service Information website ([www.mitsubishitechinfo.com](http://www.mitsubishitechinfo.com)).

## EQUIPMENT

- The following equipment is needed to reprogram the ECU:
- VCI (Vehicle Communication Interface) or VCI Lite - MB991824 or MB992744
- MEDIC Laptop/Tablet with A/C power adapter - 520924, or FZG1MK2
- MUT III Main Harness "A" (blue connector at the DLC end) - MB991910 or MB992745
- USB 2.0 Cable - MB991827 or MB992747
- MEDIC 3.5/4 update at **765** or higher
- For Standalone MUT III units, MUT-III SE Reprogramming Database **N221001NR** or higher

## ECU REPROGRAMMING CHART

Model	New HW Part No.	New SW Part No./Ver.	Target HW Part No.	Target SW Part No./Ver.	Remarks
Outlander	283426RA1A	283H56RA3A	283426RA1A	283D46RA1A	MMC P/No:8638A524
Outlander PHEV	283426RA0A	283H56RA0B	283426RA0A	283D46RA0A/ 283426RA0A	MMC P/No:8638A320

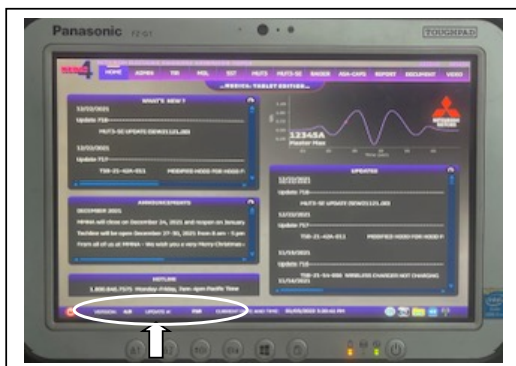
## SOFTWARE/MEDIC VERSION VERIFICATION PROCEDURE

1. Verify that the Wireless Charger-ECU has not already been updated to the latest S/W number in the table above. If the ECU is at the latest level, reprogramming is not necessary.

**NOTE:** Reprogramming the Wireless-ECU with the latest database (e.g., **N221001NR**) includes all past and current reprogramming for TSBs of affected vehicles. It is not necessary to reprogram the ECU for each previous TSB.

### For MEDIC 3.5/4 users only: (MUT-III SEV users go to step 5)

2. Verify the MEDIC 3.5/4 is at version 3.5 and at update **765** or higher.  
If your **MEDIC 3.5/4 update is at least 765**, continue with the Reprogramming Procedure.  
If your **MEDIC 3.5/4 update is below 765**, update your MEDIC as follows:



3. Select the MEDIC 3.5/4 Admin tab and click on "Updates".

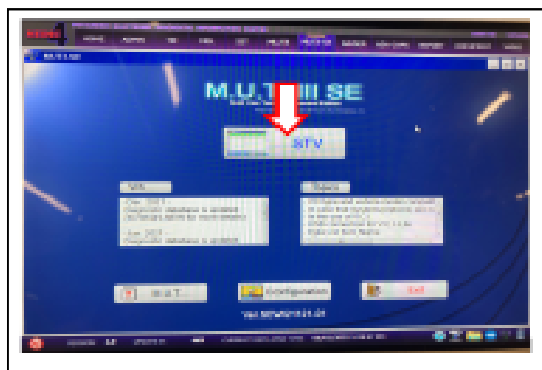


4. If the MEDIC update screen advises updates are available, click the "Begin" button. After all updates are complete, **GO TO THE REPROGRAMMING PROCEDURE.**

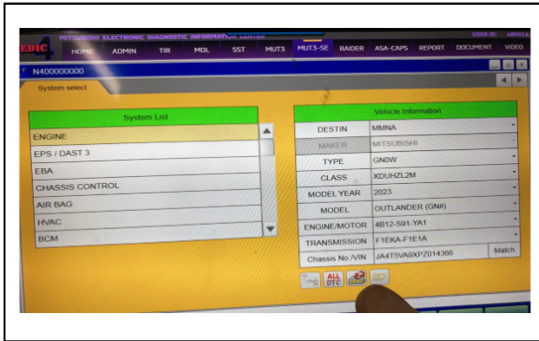


5. STANDALONE MUT-III SE SCAN TOOL VIEWER (STV) ONLY: (MEDIC 3.5 USERS – GO TO THE REPROGRAMMING PROCEDURE). Verify that your MUT-III SE has the most current version of the reprogramming database from the MUT-III SE Main Page.

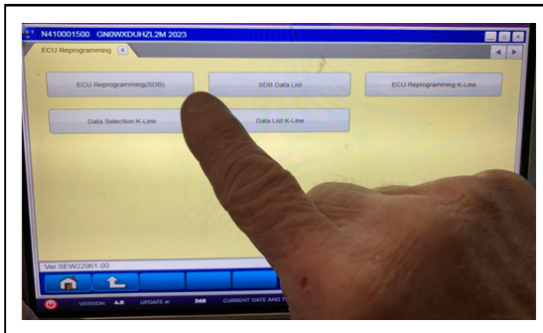
- a. Press the MUT-III SE STV icon.



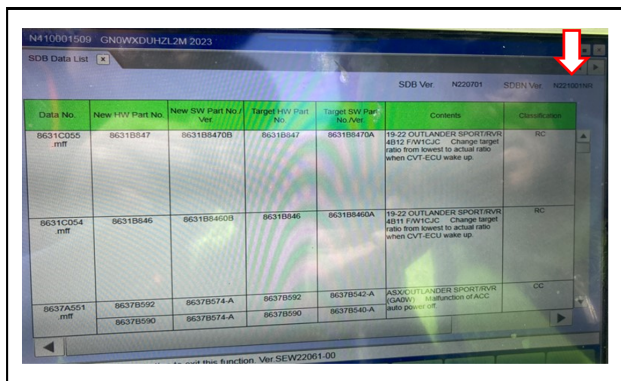
- b. Press the Reprogramming button once the vehicle information is entered.



- c. Press "ECU Reprogramming (SDB)" button.



- d. Confirm that the database number displayed in the upper right above the chart is **N221001NR** or higher.
- If the database number displayed on your MUT-III SE is **N221001NR** or greater, continue to the next section.
  - If the reprogramming database number displayed on your MUT-III SE is lower than **N221001NR**, then the MUT-III SE database needs to be updated.
  - Once the database number is confirmed, hit the Home button to go back to the System Select screen.





## REPROGRAMMING PROCEDURE

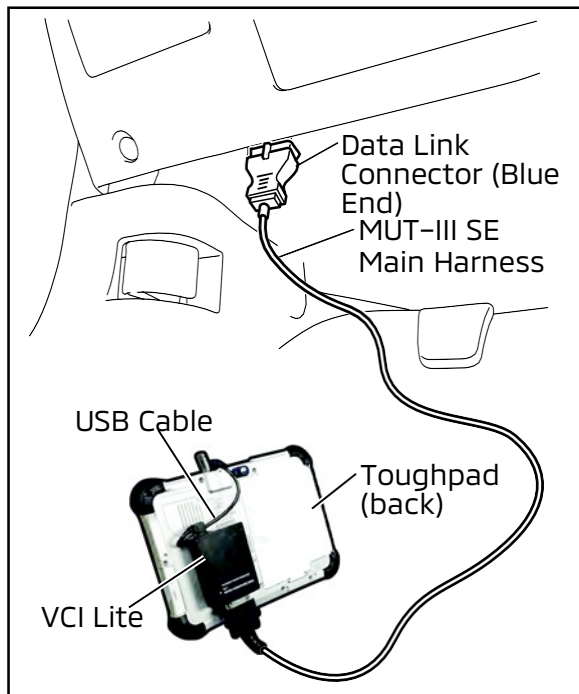


**CAUTION** To ensure that the vehicle battery maintains 12V during the procedure, hook-up a battery charger to the vehicle during the procedure.

**NOTE:** VCI Stand-alone reprogramming is not available for this procedure. The laptop/tablet and the VCI must remain connected for the entire procedure.

1. Connect the equipment as follows:

**NOTE:** VCI Lite and MEDIC 4.0 Toughpad shown for illustration purposes only.

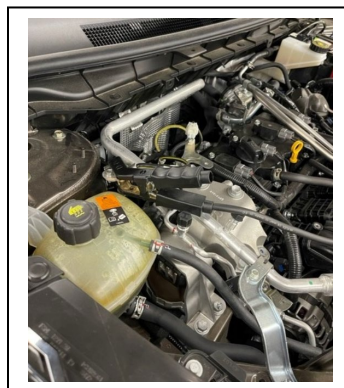
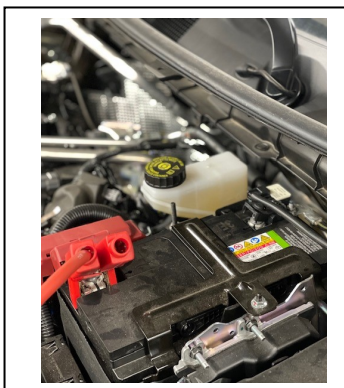


- Turn the MEDIC PC/tablet on. If the battery indicator in the lower right hand corner of the screen does not show a full charge, it is recommended that either the battery be charged prior to beginning or be used with the A/C power adaptor connected.
- Connect the USB cable to the VCI/VCI Lite. When the laptop/tablet displays the MUT-III SE main screen, connect the USB cable to the device.
- Connect the MUT-III SE main harness with the blue DLC connection to the VCI/VCI Lite. Connect the blue connection of the MUT-III SE main harness to the vehicle's data link connector.
- For VCI only (p/n MB991824): Turn the VCI power switch ON. Verify that the indicator lamp in the upper right corner of the screen is green.



**DO NOT DISTURB THE HARNESS CABLES OR CONNECTIONS DURING THE REPROGRAMMING PROCESS AS IT COULD CAUSE THE CONTROL UNIT TO LOSE DATA. IF THE USB CABLE IS DISCONNECTED DURING THIS PROCEDURE, A WARNING MESSAGE WILL DISPLAY.**

**NOTE:** Due to limited space it may be easiest to connect battery charger cable onto ground point.

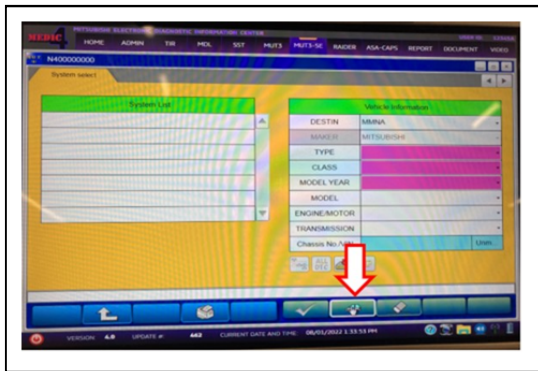


2. Turn the ignition switch to the "ON" position.

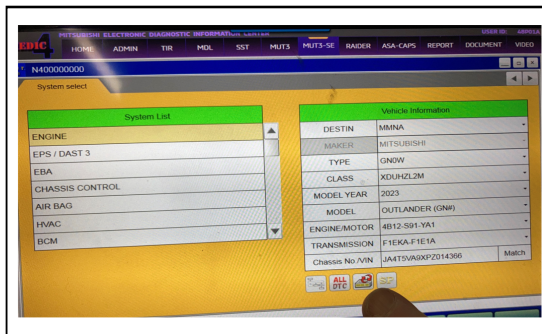
- a. Press MUT-III SE STV icon.



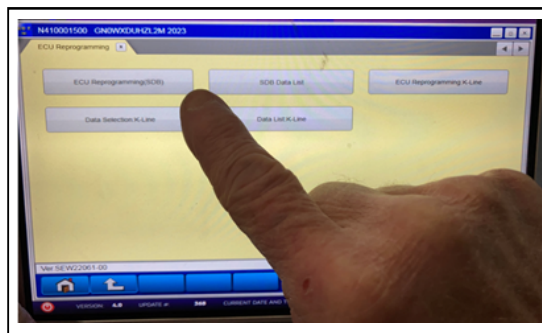
- b. Press the model information display button (car icon) and verify all vehicle info is correct.



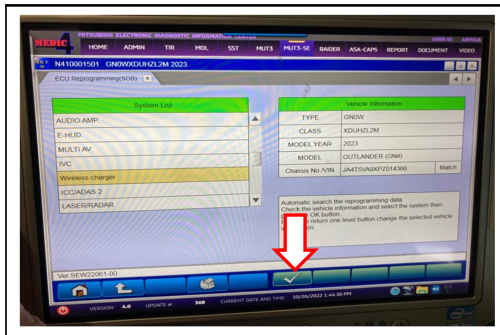
- c. Press the reprogramming icon button.



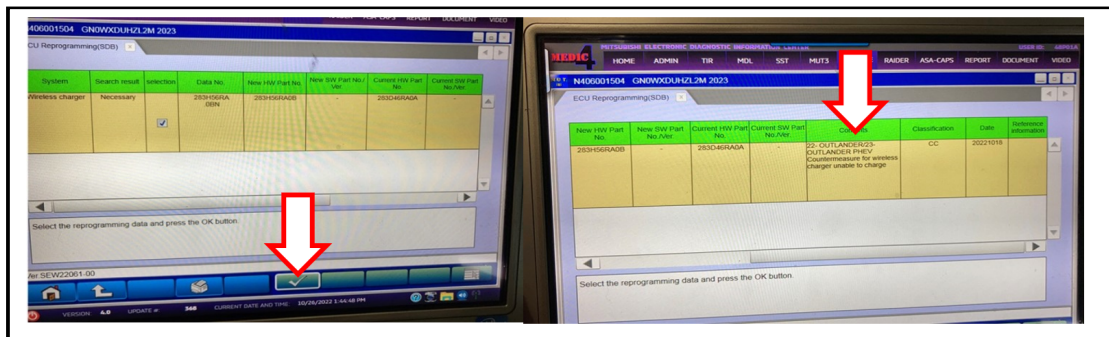
- d. Press the "ECU reprogramming" (SDB) button.



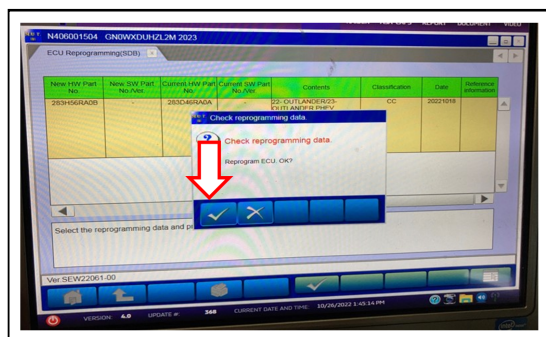
- e. Select "Wireless charger" from the System List and press the OK button.



- f. The Automatic ECU Reprogramming (SDB) database screen will display. Press the OK button.
- Verify that the correct new Software (Countermeasure for wireless charger unable to charge) is listed in the table.



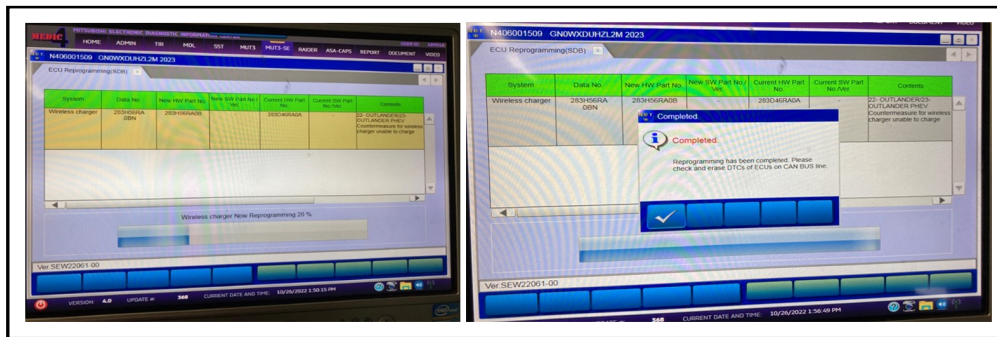
- g. Press the OK button and type AS2 account information to start the reprogramming.



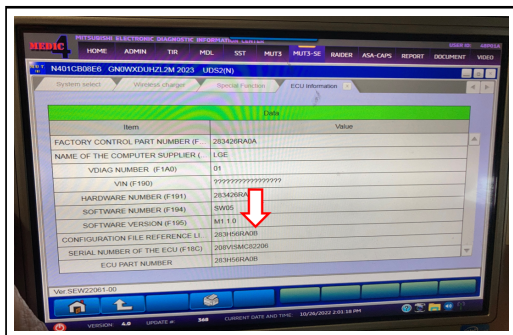
**Note:** Do not disturb the cable or turn off the ignition during reprogramming to prevent damage to the ECU.



- h. Once the reprogramming is initiated the screen (shown below) will indicate the reprogramming progress. It may take 4-5 minutes to complete.

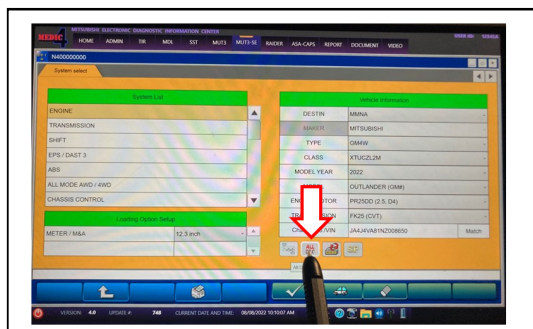


- i. Verify that the software version has been updated to "283H56RA3A or 283H56RA0B".

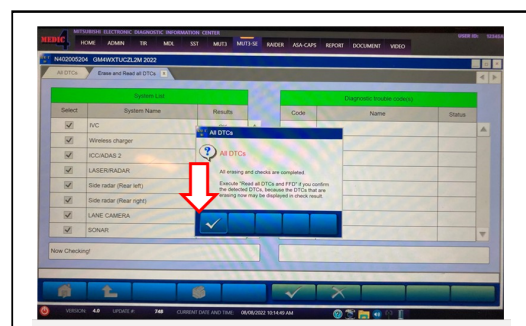
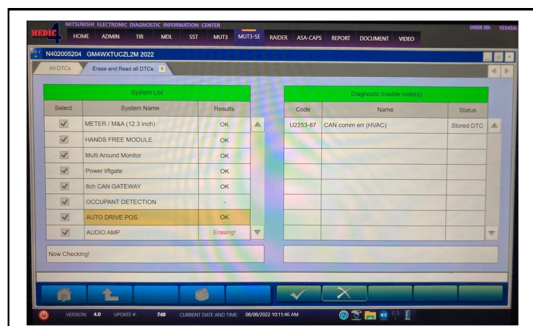


Model	New HW Part No.	New SW Part No./Ver.	Target HW Part No.	Target SW Part No./Ver.	Remarks
Outlander Outlander PHEV	283426RA1A	283H56RA3A	283426RA1A	283D46RA1A	MMC P/No:8638A524
	283426RA0A	283H56RA0B	283426RA0A	283D46RA0A/ 283426RA0A	MMC P/No:8638A320

- j. Press "ALL DTC" button to initiate the "Erase and Read all DTCs". Press OK when complete.



**IMPORTANT:** The "Erase and Read all DTCs" must be performed since DTCs may be generated and stored.



6. Using a ball-point pen, enter the appropriate ECU part number, Software Part Number (ROM ID#), this Technical Service Bulletin number, your dealer code, and the current date on the Engine Compartment/Control Module Label (p/n MSSF024G00). The Vendor Code is not applicable. The label is available from your facing PDC.

		<b>AUTHORIZED MODIFICATIONS</b>		These Modifications Have Been Approved as Appropriate by EPA and NHTSA	
<b>THE FOLLOWING MODIFICATIONS HAVE BEEN MADE:</b>					
PART NUMBER 1860DXXX		VENDOR CODE N/A		ROM ID # 1860C2XXXX	
TSB ENG TSB-20-13-XXX		A/T 		DATE 06/25/20	
A/T 		DEALER CODE 99332			
Engine Compartment Label			Control Module Label		

Test drive the vehicle to confirm proper operation.

## **PARTS INFORMATION**

Model	New HW Part No.	New SW Part No./Ver.	Target HW Part No.	Target SW Part No./Ver.	Remarks
Outlander/ Outlander PHEV	283426RA1A	283H56RA3A	283426RA1A	283D46RA1A	Wireless charger P/No:8638A524
	283426RA0A	283H56RA0B	283426RA0A	283D46RA0A/ 283426RA0A	Wireless charger P/No:8638A320

## **WARRANTY**

This bulletin is supplied as technical information only and is not an authorization to repair. If an affected vehicle is reported with the described condition, diagnose the condition, repair as described in this bulletin, and submit a normal warranty claim using the information below.

OPERATION CODE	OPERATION	WORK TIME
B0046100	REPROGRAMMING	0.3 hours
B0046190	MISCELLANEOUS	-