



**SIM 54 01 22**  
WIND DEFLECTOR GUIDE STEM BROKEN

2022-11-11

## MODEL

E-Series	Model Description	Affected Option Code
F57	MINI Convertible	387 Convertible Wind Deflector

## SITUATION



It is possible that the guide stem (aka rotational axis) on the wind deflector can break, upon removal and or during installation.

## CAUSE

Possible misuse of the wind deflector.

## CORRECTION

Replace the broken wind deflector guide stem.

## PROCEDURE

Verify that one or both wind deflector guide stems are broken. If yes, then.

1. Remove wind deflector and replace the guide stem following the repair instructions attached to this SIB (54 34 393).

## PARTS INFORMATION

Obtain and confirm the part numbers for your specific vehicle by entering the VIN in either ETK or AIR which takes into account specific equipment and/or options.

Part Number	Description	Quantity
54 34 7 488 320	Rotational axis for wind deflector	As needed

## CLAIM INFORMATION

This Service Information bulletin provides technical and repair-related information.

Damage and/or issues caused by outside influences are not covered under the MINI limited warranties.

Copyright ©2022 MINI USA, a division of BMW of North America, LLC. All Rights Reserved

## Eligible and Covered Work/Repairs

When used to repair a verified defect in materials or workmanship, the information provided in this bulletin is covered under the terms of the MINI New Passenger Car Limited Warranty.

To submit a claim, please follow the established and applicable warranty policy and procedures (Labor/Part/Sublet) that apply to the repair being performed.

Refer to AIR for the corresponding Defect Code, flat rate labor operations (including the diagnosis that applies\*) and the flat rate unit (FRU) allowances.

Only one Main labor operation code can be claimed per repair visit.

\*Based on which one applies to your dealer, please refer to **SI M01 01 20** or **M01 04 20** for the applicable procedure for documenting, claiming, and explaining, on the RO and in the claim comments, your diagnosis work time (WT), job/repair work time (WT), and the vehicle repairs your dealer performed, unless otherwise required by State law.

## FEEDBACK REGARDING THIS BULLETIN

Technical Feedback	To submit feedback for the technical topics of this bulletin: Submit your feedback in the rating box at the top of this bulletin
Warranty Feedback	To submit feedback for the CLAIMS section of this bulletin: Submit an IDS ticket to the Warranty Department, or use the chat available in the Warranty Documentation Portal
Parts Feedback	To submit feedback for the PARTS section of this bulletin: Submit an IDS ticket to the Parts Department

### Supporting Materials

[picture\\_as\\_pdf M540122 Attachment F57 Wind Deflector.pdf](#)

## Replacing rotational axis for wind deflector, front left or right »

### Prerequisite

- Wind deflector is removed.



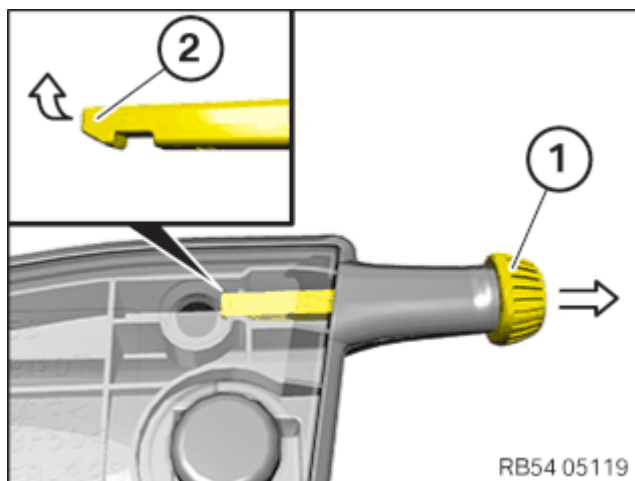
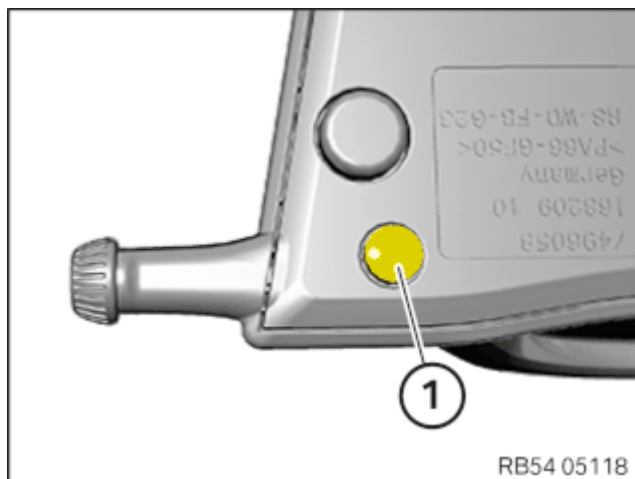
### NOTICE

Description is for left component only. Procedure on the right side is identical.

### Main work

#### Removing the quick-release axle for the wind deflector

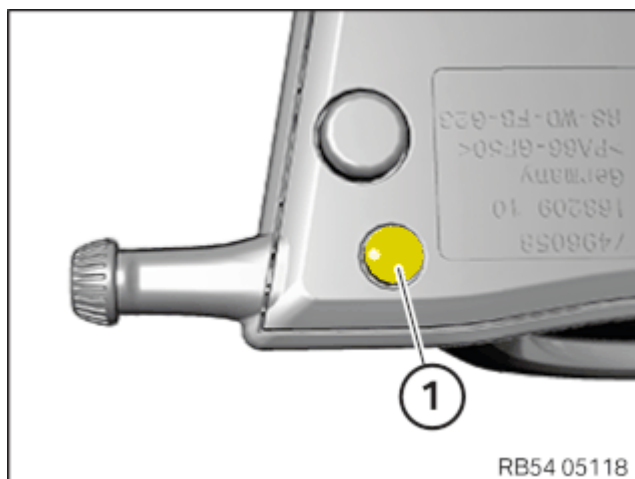
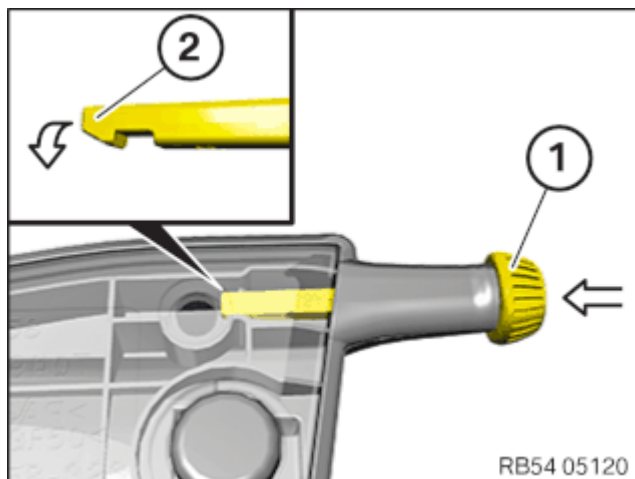
- Lever out the stop pad (1) with a suitable tool.



- Lever out the quick-release axle (1) for the wind deflector with a suitable tool at the retaining lug (2) and feed out in the direction of arrow.

### Installing the full-floating axle for the wind deflector

- Feed in the full-floating axle (1) for the wind deflector in the direction of arrow until the retaining lug (2) is engaged correctly.



- Position the stop pad (1) and press it in.