



## Technical Service Bulletin

<b>GROUP</b>	<b>NUMBER</b>
<b>CAMPAIGN</b>	<b>22-01-091G</b>
<b>DATE</b>	<b>MODEL(S)</b>
<b>DECEMBER, 2022</b>	<b>GV70 (JK1)</b>

**SUBJECT:** INSIDE DOOR HANDLE NOISE REPAIR  
(SERVICE CAMPAIGN T29G)

### ★ IMPORTANT

Dealers must perform this service campaign on all affected vehicles prior to customer retail delivery and whenever an affected vehicle is in the shop for any maintenance or repair.

Access the "Vehicle Information" screen via WEBDCS to identify open campaigns.

**Description:** Certain 2023MY GV70 (JK1) vehicles may exhibit a creaking noise when operating the front driver's side inside door handle. The bulletin describes the procedures to inspect, and if necessary, repair this noise condition.



### STUI



This TSB includes a STUI video and picture as requirements. Where indicated, please ensure the video includes the VIN plate and the photo includes the last 6 digits of the VIN and date of repair on a piece of paper. Ensure the VIN and date of repair are clearly visible in the photo. Finally, please ensure the captured video and picture are completed according to the steps in this TSB and uploaded to STUI. All claims submitted that have illegible, incomplete, missing, or incorrect video(s) and picture(s) are subject to debit.

**Applicable Vehicles:** Certain 2023MY GV70 (JK1) vehicles produced between 8/16/2022 – 9/16/2022

### Parts Information:

Parts Name	Part Number	Figure	Remarks
Door trim panel fastener (clip)	82315-L0000		Only replace the clip(s) that are damaged upon removing the door panel.
	82315-D2000		

**Warranty Information:**

Model	Op. Code	Operation	Op. Time	Causal Part	Nature Code	Cause Code
GV70 (JK1)	20D144R2	Inside Handle Noise Check (LH)	0.3 M/H	82610-AR000-VCA	Q57	ZZ7
	20D144R3	Inside Handle Noise Check and Housing Interference Area Cutting <u>Without</u> Door Clip Replacement (LH)	0.4 M/H			
	20D144R4	Inside Handle Noise Check, Housing Interference Area Cutting <u>With</u> Door Clip Replacement (LH)	0.4 M/H			

**NOTE 1:** Submit Claim on Campaign Claim Entry Screen

**NOTE 2:** If a part is found in need of replacement while performing this service campaign and the affected part is still under warranty, submit a separate claim using the same Repair Order. If the affected part is out of warranty submit a Prior Approval Request for goodwill consideration prior to performing the work.


**NOTE 3:** Op Code 20D144R4 will reimburse for 2 clips for each of part number 82315-L0000 and 82315-D2000.

**NOTE 4:** Op time includes taking a video and a STUI picture. A video including the VIN plate & a STUI picture (if necessary based on inspection) including the last 6 digits of the VIN and date of the repair must be included and uploaded to STUI. **If not included, claim will be subject to debit.**

**Inspection Procedure:**

1. Pull the front driver's side inside door handle several times to check for a creaking noise.

STUI



**Using STUI, record a continuous video using the procedure below:**

1. Show the VIN plate on the front driver's side door jamb.
2. Then, show the operation of the front driver's side inside door handle several times to demonstrate if the noise is present or not.

**Upload the video to STUI.**



**VIN plate example**



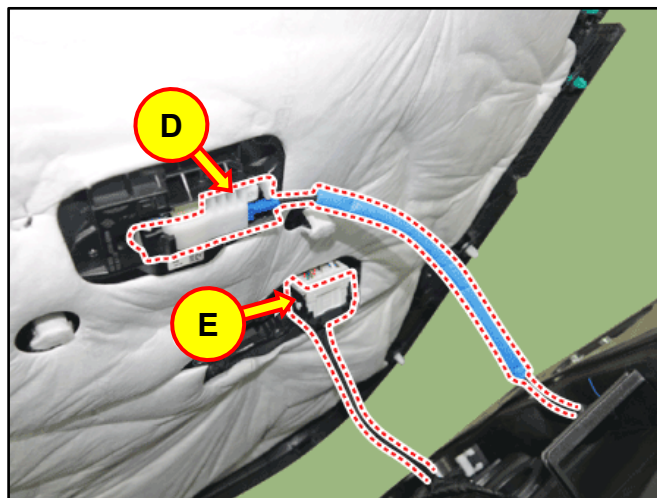
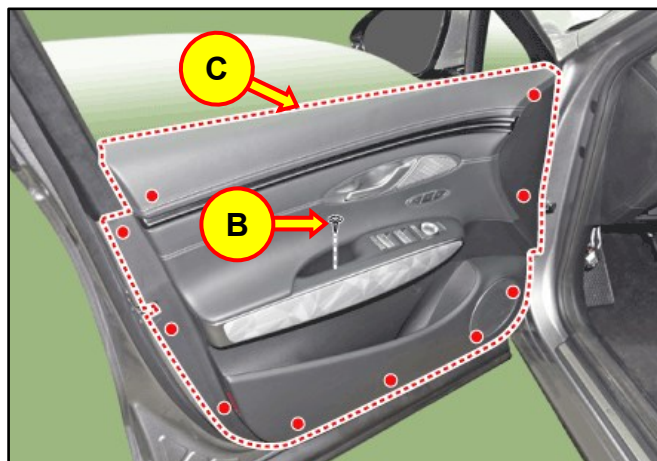
**Inside door handle operation**

2. If no noise is heard when pulling the inside door handle, no further action is required.

If a creaking noise is heard when pulling the inside door handle, proceed to the next section to repair the condition.

**Service Procedure:**

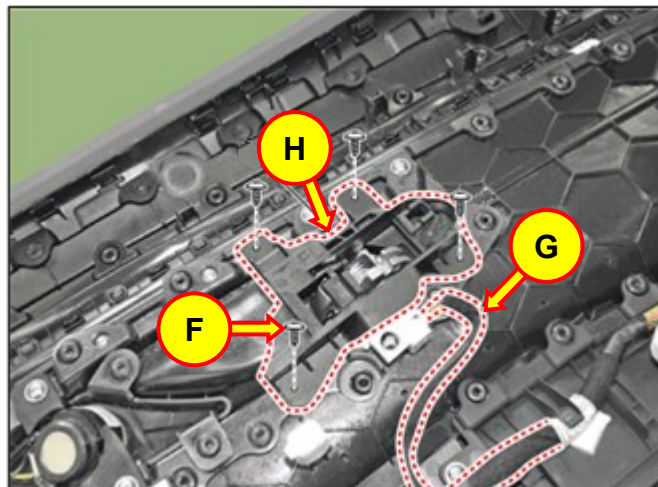
1. Remove the front driver's side door pull handle cover (A).
2. Remove the screw (B) in the pull handle and remove the front driver's side door trim panel (C) with a trim removal tool.
3. Disconnect the inside door handle cable (D) and the door panel connector (E).



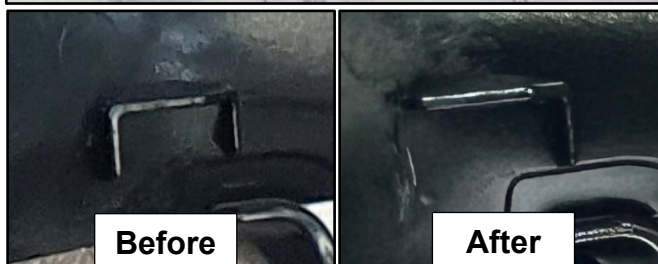
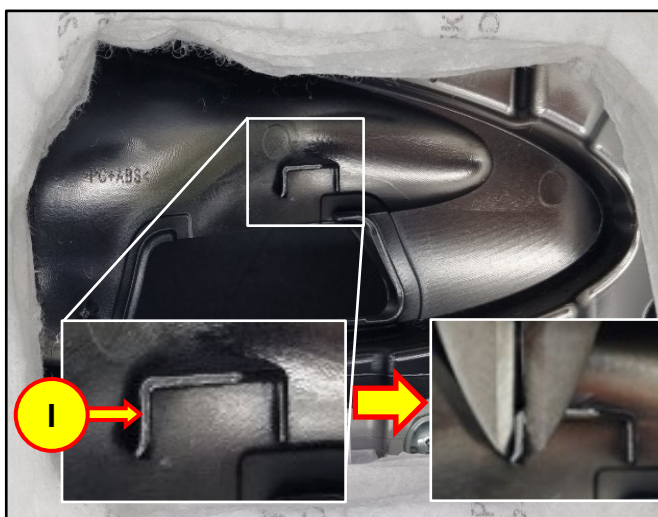
- Remove the 4 inside door handle mounting screws (F) and connector (G), then remove the inside door handle assembly (H).

**Tightening Torque:**

1.3 – 1.6 lb-ft (1.8 – 2.2 Nm)



- Using cutting pliers or nippers, remove the indicated plastic rib (I) on the door trim panel.

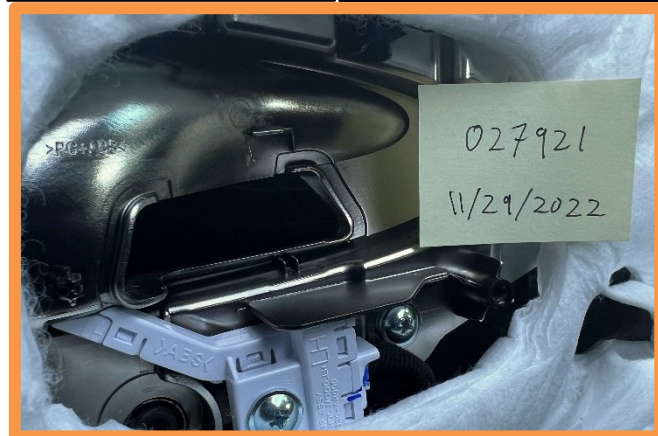


**STUI**



Using STUI, take a photo of the door trim panel area after the plastic rib has been removed. Include in the photo a piece of paper containing the last 6 digits of the VIN and the date of repair.

Upload the photo to STUI.



**Example of acceptable STUI photo**

6. Reinstall all removed parts in the reverse order of disassembly.

**Information**

- Replace any damaged door trim panel clips as necessary.

7. After reassembly, pull the inside door handle several times to verify the noise is no longer present.
8. The service procedure is now complete.