

NOTES:

Ladder Backer Locations.


View is Looking at Exterior of Rear Wall.

Backer is 1" x 2 1/2" Aluminum Tube .063 Thick.

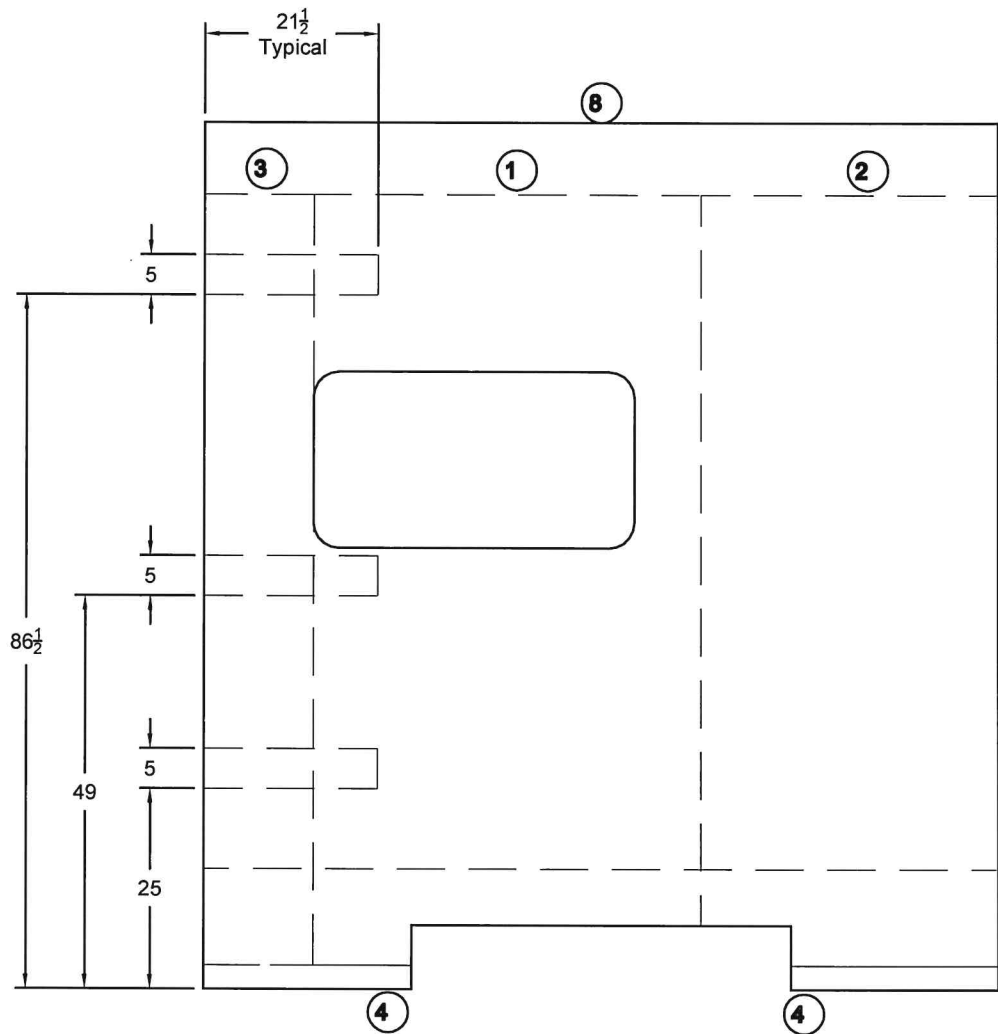
ROAD
SIDE

VIEWED FROM EXTERIOR

CURB
SIDE

REV	DESCRIPTION	DATE	Product: Entrada MSB	 <small>TOLERANCES: UNLESS OTHERWISE STATED DIMS ARE IN INCHES .X = ± .1 FRACTIONS = ± 1/16 .XX = ± .01 ANGLES = ± .1°</small>	Model: 24FM Mercedes
			Drawn By:		Title: Rear Wall Frame
			Drawn Date:		Dwg. No.:
					Sheet: Of

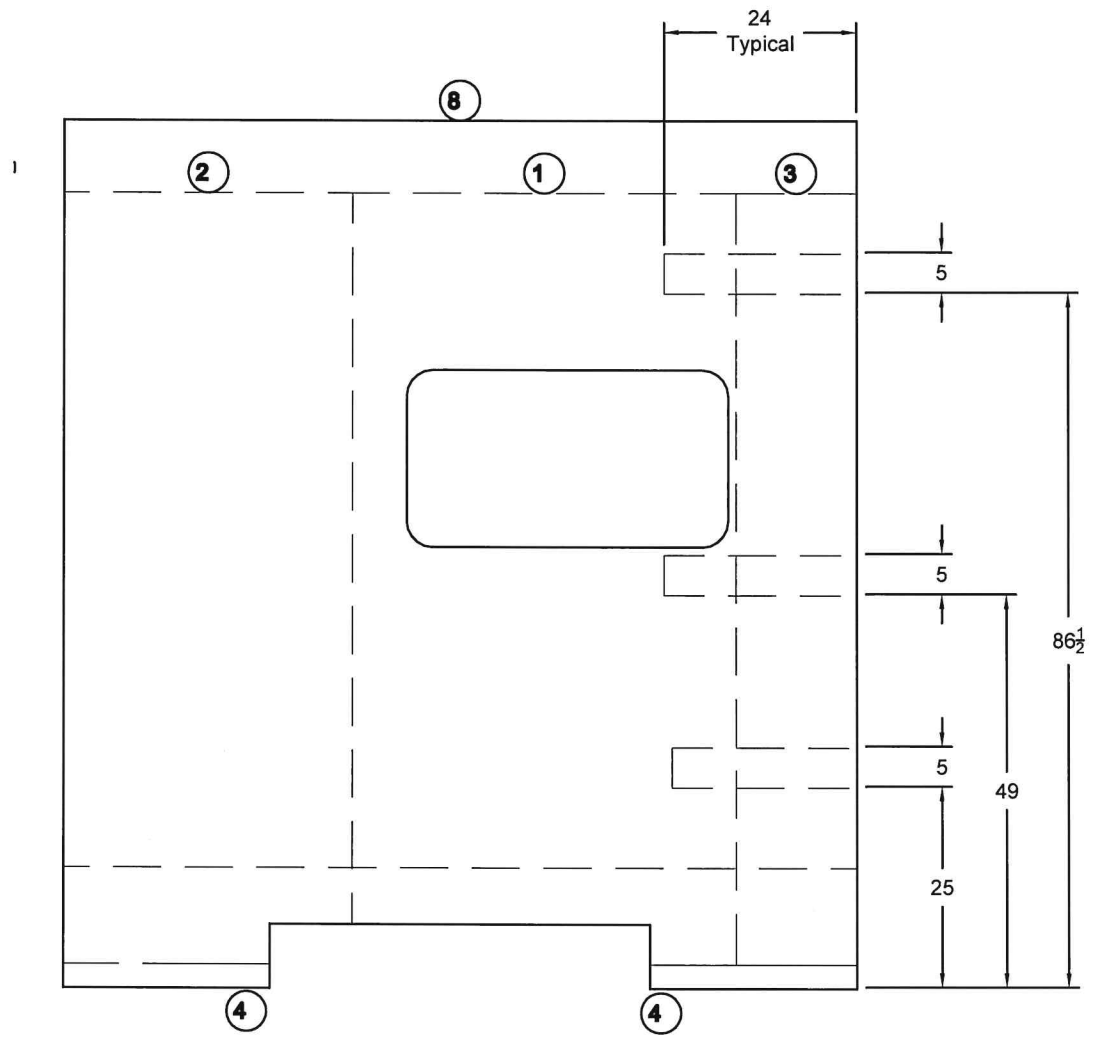
East to West RV claims exclusive rights to the information documented herein.
Manufacture of material shown in part or full is prohibited without the written consent from East to West RV.



ROAD
SIDE

VIEWED FROM EXTERIOR
2200S

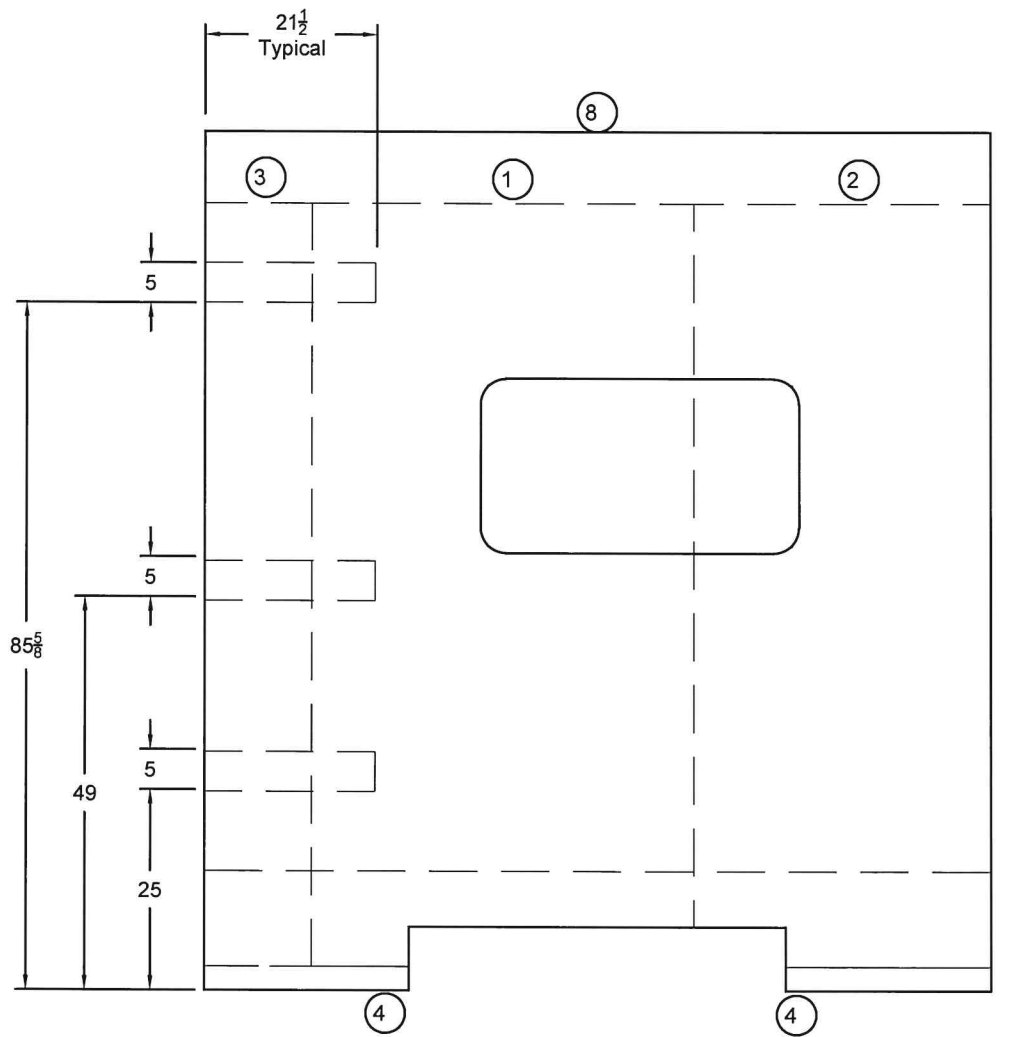
CURB
SIDE



ROAD
SIDE

VIEWED FROM EXTERIOR
2600DS

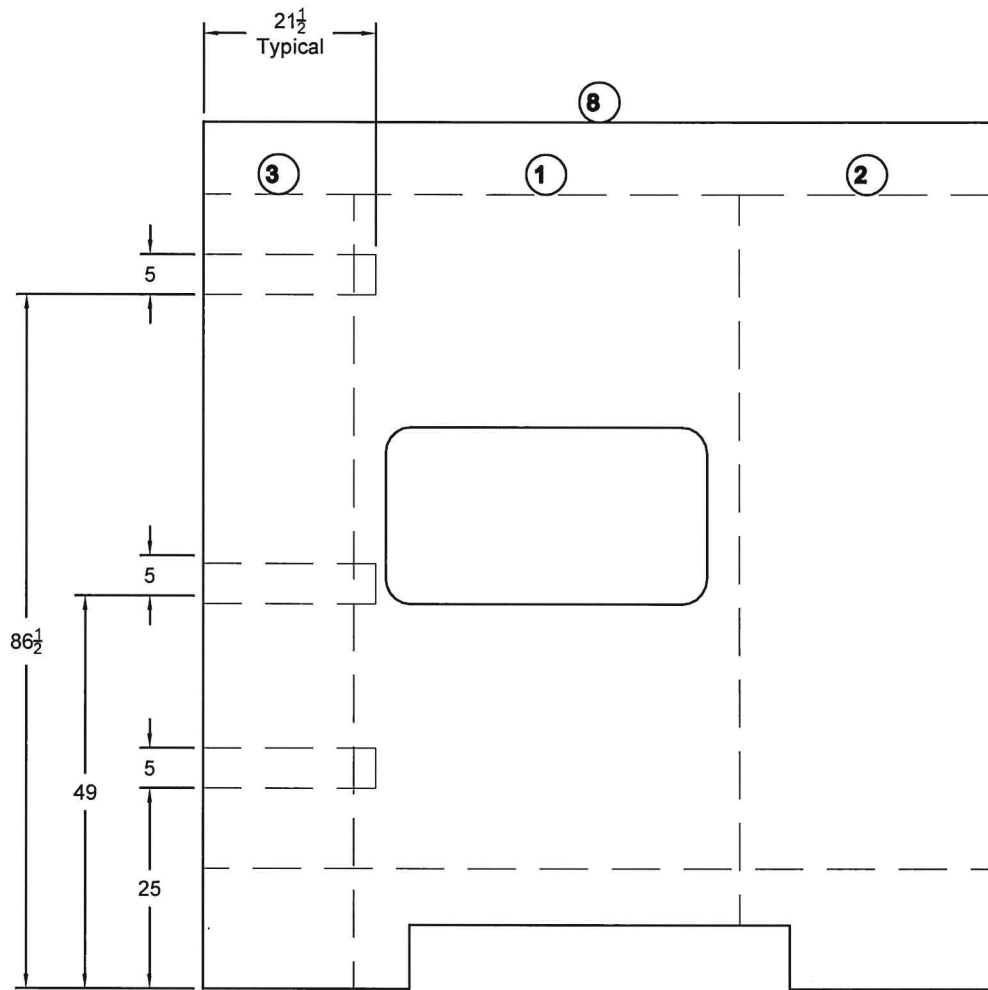
CURB
SIDE



ROAD
SIDE

VIEWED FROM EXTERIOR
2700NS

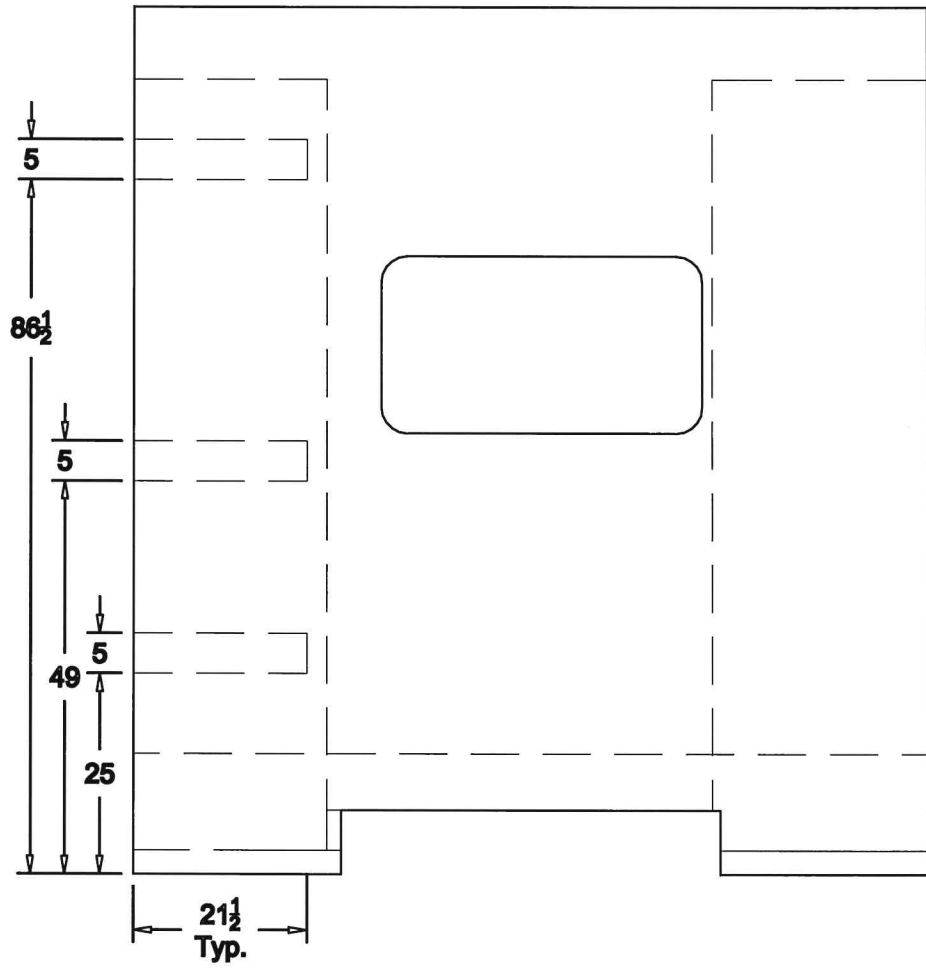
CURB
SIDE



ROAD
SIDE

VIEWED FROM EXTERIOR
2900DS & 2950OK

CURB
SIDE



Road Side

VIEWED FROM EXTERIOR
3100FB

Curb Side