



STAR ONLINE PUBLICATION



Case Number: S2223000071

Release Date: October 2022

Symptom/Vehicle Issue: 2nd And Or 3rd Row Seat Back Trim Loose Or Separating From Carpet.

Customer Complaint/Technician Observation: Visual inspection may show the J-Clip appears detached from the seat back. Trim is not fully seated on 2nd and or 3rd row seat backs.

Discussion: To improve the J-clip attachment, follow Service Library service information for remove and install of the 2nd or 3rd row seat back cover. Steps can be located in service information group 23 - Body / Seats, Second Row / COVER, Seat Back. Additional images below show detail of the seat back rear cover, metal lances (clip tangs), and J-clip fitment.



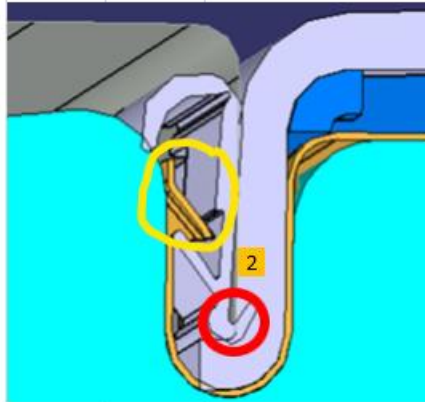
Loose fitment of cover in areas shown.

This document does not authorize warranty repairs. This communication documents a record of past experiences. STAR Online does not provide any conclusions about what is wrong with the vehicle. Rather, it captures all previous cases known that appear to be similar or related to the vehicle symptom / condition. You are the expert, and you are responsible for deciding on the appropriate course of action.

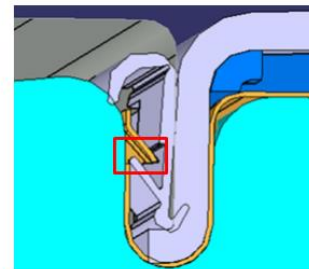
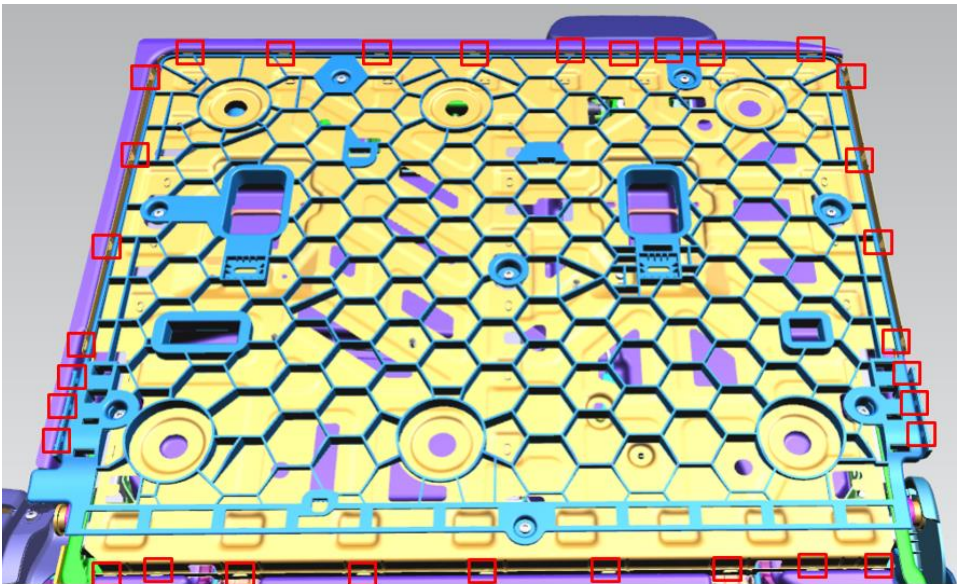
Contact STAR Center, or your Technical Assistance Center Via TechConnect, eCONTACT or Service Library entry if no solution is found.



STAR ONLINE PUBLICATION



During reassembly, use a pudgy knife or trim stick to engage the trim at all metal lances (goldish tab circled in yellow) by pushing down on spot #2.



Push plastic retainer in at all 32 locations on the frame. Plastic retainer must be pushed under metal lance to have proper retention.

Metal lance (tabs) locations indicated with red squares.

This document does not authorize warranty repairs. This communication documents a record of past experiences. STAR Online does not provide any conclusions about what is wrong with the vehicle. Rather, it captures all previous cases known that appear to be similar or related to the vehicle symptom / condition. You are the expert, and you are responsible for deciding on the appropriate course of action.

Contact STAR Center, or your Technical Assistance Center Via TechConnect, eCONTACT or Service Library entry if no solution is found.