



Technical Service Bulletin

| | |
|--------------------------------------|--------------------------------------|
| GROUP CAMPAIGN | NUMBER 22-01-084G-1 |
| DATE NOVEMBER, 2022 | MODEL(S) G90 (RS4) |

SUBJECT: G90 POWER SEAT MODULE (DPSM/PSM) & ASSIST POWER SEAT MODULE (APSM) SOFTWARE UPDATE (SERVICE CAMPAIGN T28G)

This TSB supersedes TSB# 22-01-084G to update steps 11 & 20 to confirm proper functionality of the driver and passenger seats after the software update procedure.

★ IMPORTANT

*******DEALER STOCK ONLY*******

Dealers must perform this service campaign on all affected vehicles prior to customer retail delivery.

Access the "Vehicle Information" screen (VIS) via WEBDCS to identify open campaigns.

Description: This bulletin provides information on performing a software update to the Power Seat Module (DPSM/PSM) and Assist Power Seat Module (APSM) for G90 (RS4) vehicles for improved usability and interference prevention logic.

Applicable Vehicles: Certain 2023MY G90 (RS4) vehicles produced from 4/21/2022 – 8/27/2022.

Warranty Information:

| Model | Op. Code | Operation | Op. Time | Causal Part | Nature Code | Cause Code |
|-----------|----------|---------------------|----------|-------------|-------------|------------|
| G90 (RS4) | 20D118R1 | DPSM & APSM UPGRADE | 0.8 M/H | 95450-T4000 | I14 | ZZ3 |

NOTE 1: Submit claim under Campaign Claim Entry Screen.

NOTE 2: If a part is found in need of replacement while performing this bulletin and the affected part is still under warranty, please submit a separate claim using the same Repair Order. If the affected part is out of warranty, submit a Prior Approval Request for goodwill consideration prior to performing the work.

NOTICE

Check if the vehicle's software version is affected:

- Check the current version of the DPSM and APSM ROM ID and compare it to the ROM ID information table listed below before attempting to perform the software update.

Circulate To: General Manager, Service Manager, Sales Manager, Parts Manager, Warranty Manager, Service Advisors, Technicians, Body Shop Manager, Fleet Repair

NOTICE

You must initially perform the GDS DPSM (PSM) and APSM Update in Auto Mode.

- Refer to the TSB **15-GI-001** for the tablet-based Mobile GDS ECU update procedures.
- If the DPSM/APSM update starts but then fails in Auto Mode, perform the update in Manual Mode to recover. Go to page 7 to complete the update in Manual Mode.

NOTICE

- In the ECU Upgrade screen, select “PSM” and then “APSM” as the systems to update.

GDS Information:

| EVENT | EVENT DESCRIPTION |
|-------|--------------------------------|
| #885 | “885.RS4 DPSM SOFTWARE UPDATE” |
| #886 | “886.RS4 APSM SOFTWARE UPDATE” |

ROM ID Information Table:

| VEHICLE | SYSTEM | PART NUMBER | ROM ID | |
|---------------|---------------|-------------|--------------|------|
| | | | OLD | NEW |
| RS4 (#885) | DPSM (PSM) | 95450-T4000 | 1.07 1.08 | 1.09 |
| | | 95450-T4010 | 1.07 1.08 | 1.09 |
| | | 95450-T4100 | 1.07 1.08 | 1.09 |
| | | 95450-T4110 | 1.07 1.08 | 1.09 |
| RS4 (#886) | APSM | 95455-T4000 | 1.08 1.09 | 1.10 |
| | | 95455-T4010 | 1.08 1.09 | 1.10 |
| | | 95455-T4100 | 1.08 1.09 | 1.10 |
| | | 95455-T4110 | 1.08 1.09 | 1.10 |
| | | 95455-T4150 | 1.08 1.09 | 1.10 |

SUBJECT: G90 POWER SEAT MODULE (DPSM/PSM) & ASSIST POWER SEAT MODULE (APSM) SOFTWARE UPDATE (SERVICE CAMPAIGN T28G)

| | | | | |
|--|--|-------------|--------------|------|
| | | 95455-T4160 | 1.08 1.09 | 1.10 |
| | | 95455-T4200 | 1.08 1.09 | 1.10 |
| | | 95455-T4210 | 1.08 1.09 | 1.10 |
| | | 95455-T4300 | 1.08 1.09 | 1.10 |
| | | 95455-T4310 | 1.08 1.09 | 1.10 |
| | | 95455-T4350 | 1.08 1.09 | 1.10 |
| | | 95455-T4360 | 1.08 1.09 | 1.10 |

Manual Mode Password Information Table :

| EVENT # | MENU | PASSWORD |
|-----------------------|----------------------|----------|
| #885 DPSM (PSM) | RS4 DPSM 95450-T4000 | 4009 |
| | RS4 DPSM 95450-T4010 | 4019 |
| | RS4 DPSM 95450-T4100 | 4109 |
| | RS4 DPSM 95450-T4110 | 4119 |
| #886 APSM | RS4 APSM 95455-T4000 | 4001 |
| | RS4 APSM 95455-T4010 | 4011 |
| | RS4 APSM 95455-T4100 | 4101 |
| | RS4 APSM 95455-T4110 | 4111 |
| | RS4 APSM 95455-T4150 | 4151 |
| | RS4 APSM 95455-T4160 | 4161 |
| | RS4 APSM 95455-T4200 | 4201 |
| | RS4 APSM 95455-T4210 | 4211 |
| | RS4 APSM 95455-T4300 | 4301 |
| | RS4 APSM 95455-T4310 | 4311 |
| | RS4 APSM 95455-T4350 | 4351 |
| | RS4 APSM 95455-T4360 | 4361 |

Service Procedure:

CAUTION

Cautions During Control Unit Upgrade

- Confirm the vehicle's 12V aux. battery is fully charged. Please connect a battery charger before proceeding to eliminate risk of software update failure due to insufficient battery voltage.
- Turn off all lamps (Do not leave head lamp switch in auto mode) and all accessories (heater, A/C, blower, radio, seat warmer, defroster, etc.); do not allow the battery to be discharged during upgrade.
- Perform upgrade with the ignition switch in the ON position.
- Be careful not to disconnect any cables connected to the vehicle or scan tool during upgrade.
- Do not start the engine during upgrade.
- Do not turn off the ignition switch during upgrade.
- Do not touch the systems buttons (like 'BACK', 'HOME', 'etc.')

CONTROL UNIT UPGRADE PROCEDURE USING THE GDS-Mobile

1. GDS (Global Diagnostic System)-Mobile INSTALLATION PROCEDURE

1. Connect the VCI-II into the vehicle's DLC connector under the driver side instrument panel and check to turn the VCI-II on.

Before starting the update, make certain that the battery of the Table PC is sufficiently charged.

NOTICE

ECU upgrade function on GDS-Mobile is basically operating in wireless communication and Wi-Fi direct. Also, it is possible to be performing via USB cable between Tablet PC and VCI-II.

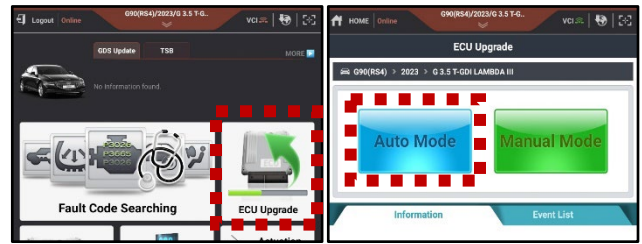


NOTICE

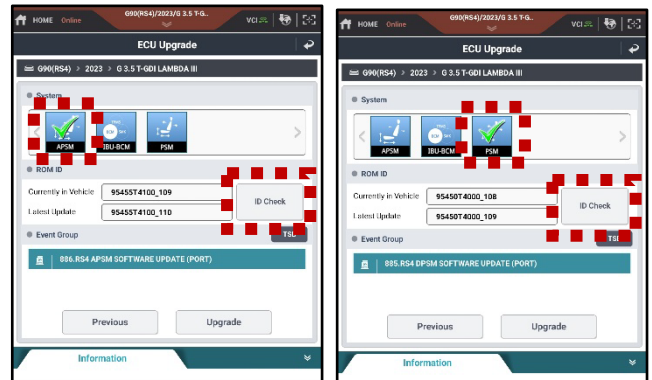
You must initially perform GDS-M DPSM/APSM Update in Auto Mode.
If the update starts but then fails in Auto Mode, perform the update in Manual Mode to recover.

2. AUTOMATIC UPGRADE PROCEDURE USING THE GDS-MOBILE

2. Select **ECU Upgrade** on the initial screen after entering the vehicle information and select **Auto Mode**.



3. Select the applicable systems (**APSM** and **PSM**) and select **ID check** to check the vehicle's current ROM ID.

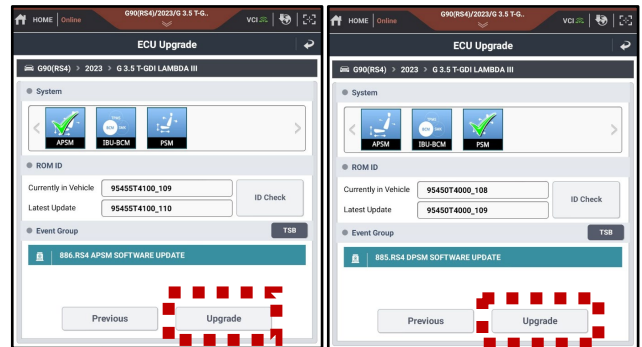


NOTICE

Check the current ROM ID version and compare it to the ROM ID Information Table before attempting to perform the software update.

4. Select **Upgrade** after confirming correct Event is selected:

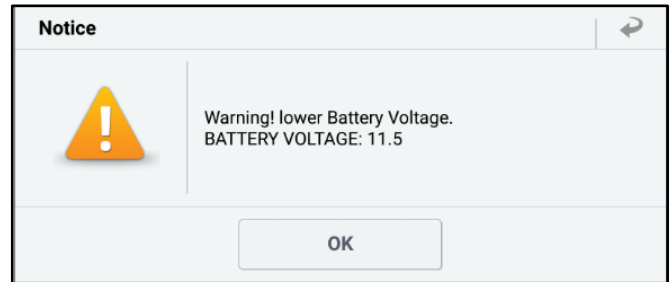
"885.RS4 DPSM SOFTWARE UPDATE"
 "886.RS4 APSM SOFTWARE UPDATE"



5. The vehicle battery voltage is checked to make sure it is at least 12 voltages to assure reliable upgrade results. Click OK if the results indicate voltage is ok.

NOTICE

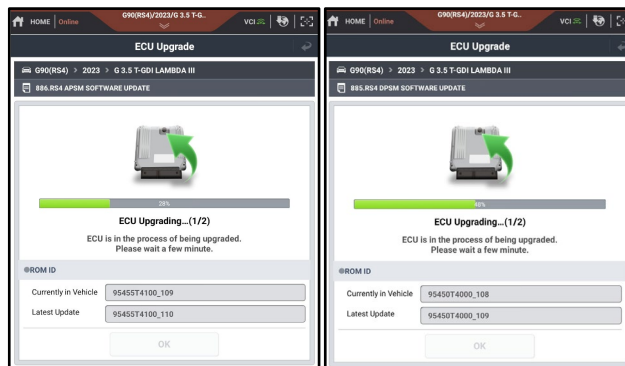
If battery voltage is below 12 voltages as below, click BACK and then run the engine to assure an adequate battery charge state for reliable upgrade results.



SUBJECT: G90 POWER SEAT MODULE (DPSM/PSM) & ASSIST POWER SEAT MODULE (APSM) SOFTWARE UPDATE (SERVICE CAMPAIGN T28G)

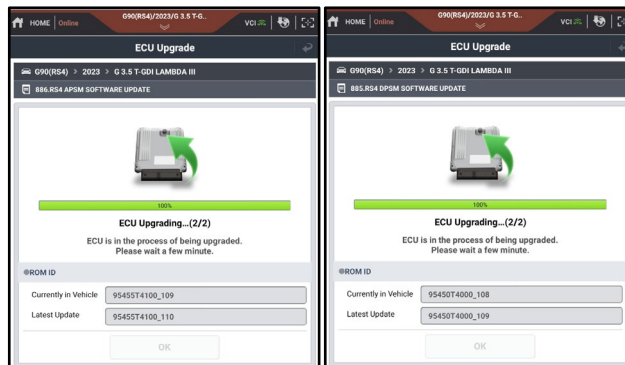
6. Upgrade (1/2) will begin, and the progress of the upgrade will appear on the bar graph.

Upgrade (1/2) will occur until 100% is reached on the bar graph.

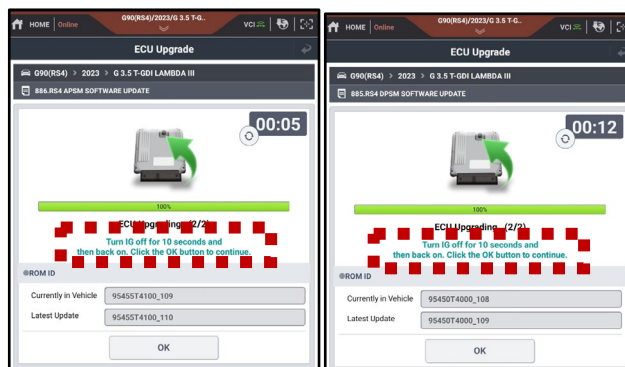


7. Upgrade (2/2) will begin, and the progress of the upgrade will appear in the bar graph.

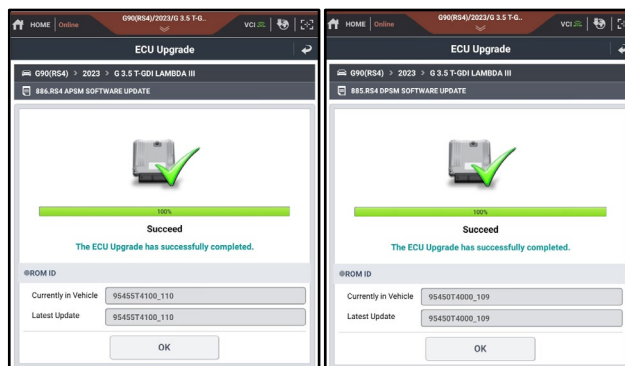
Upgrade (2/2) will occur until 100% is reached on the bar graph.



8. When upgrade reaches 100%, follow GDS instructions to “Turn IG off for 10 seconds and then back on. Click the **OK** button to continue.”



9. Click **OK** on the final screen, which indicates upgrade is complete.

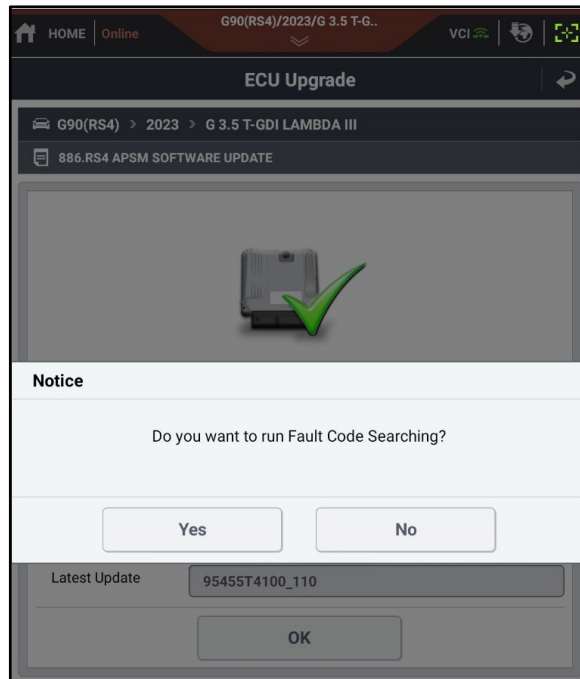


10. Repeat steps 4 ~ 9 to upgrade remaining module.

11. Check if any incidental Diagnostic Trouble Codes (DTC) or check engine lights have been created by the update and clear the DTC(s) present.

Start the engine to confirm proper operation of the vehicle.

Confirm proper functionality of driver and passenger seats (seat recline, seat slide forward and backward, seat tilt, and seat height up and down).

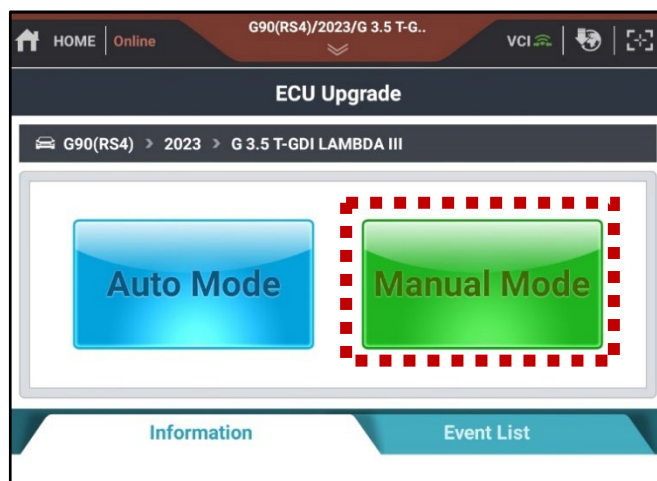


3. MANUAL UPGRADE PROCEDURE USING THE GDS-MOBILE

NOTE:

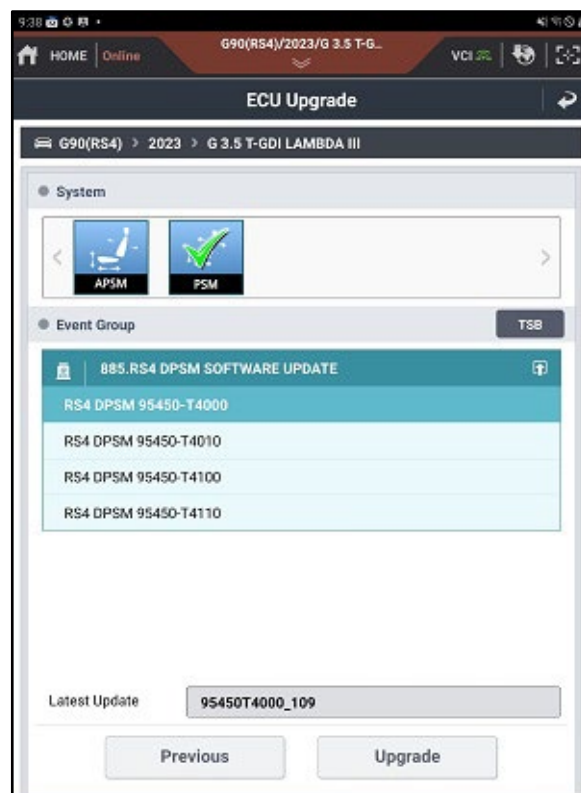
- The manual upgrade should be performed only when the automatic upgrade fails.
- If automatic upgrade fails, turn the ignition key off for about 10 seconds, place it back in the on position to reset the control unit before performing manual upgrade.

12. Select ECU Upgrade on the initial screen after entering the vehicle information and select Manual Mode.



SUBJECT: G90 POWER SEAT MODULE (DPSM/PSM) & ASSIST POWER SEAT MODULE (APSM) SOFTWARE UPDATE (SERVICE CAMPAIGN T28G)

13. Select the module and the part number with reference to the above ROM ID Information Table and tab Upgrade.



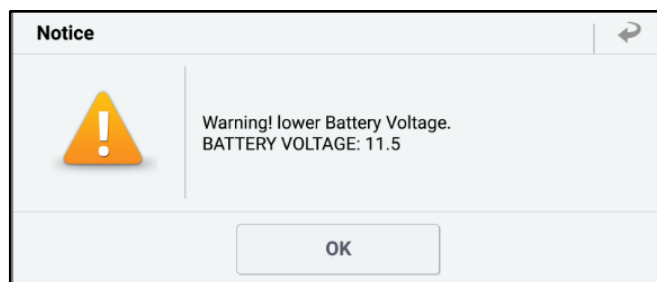
14. Enter the password from the below table then touch OK.

| EVENT # | MENU | PASSWORD |
|----------------|----------------------|----------|
| #885 (DPSM) | RS4 DPSM 95450-T4000 | 4009 |
| | RS4 DPSM 95450-T4010 | 4019 |
| | RS4 DPSM 95450-T4100 | 4109 |
| | RS4 DPSM 95450-T4110 | 4119 |
| #886 (APSM) | RS4 APSM 95455-T4000 | 4001 |
| | RS4 APSM 95455-T4010 | 4011 |
| | RS4 APSM 95455-T4100 | 4101 |
| | RS4 APSM 95455-T4110 | 4111 |
| | RS4 APSM 95455-T4150 | 4151 |
| | RS4 APSM 95455-T4160 | 4161 |
| | RS4 APSM 95455-T4200 | 4201 |
| | RS4 APSM 95455-T4210 | 4211 |
| | RS4 APSM 95455-T4300 | 4301 |
| | RS4 APSM 95455-T4310 | 4311 |
| | RS4 APSM 95455-T4350 | 4351 |
| | RS4 APSM 95455-T4360 | 4361 |

15. The vehicle battery voltage is checked to make sure it is at least 12 volts to ensure reliable upgrade results. Click OK if the results indicate voltage is OK.

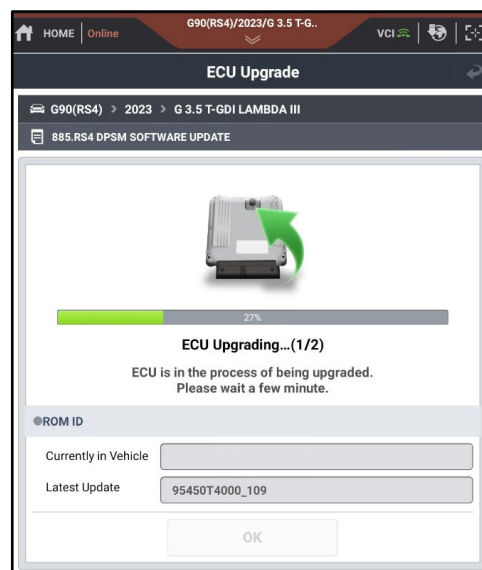
NOTICE

If battery voltage is below 12 voltages as below, click BACK and then run the engine to assure an adequate battery charge state for reliable upgrade results.



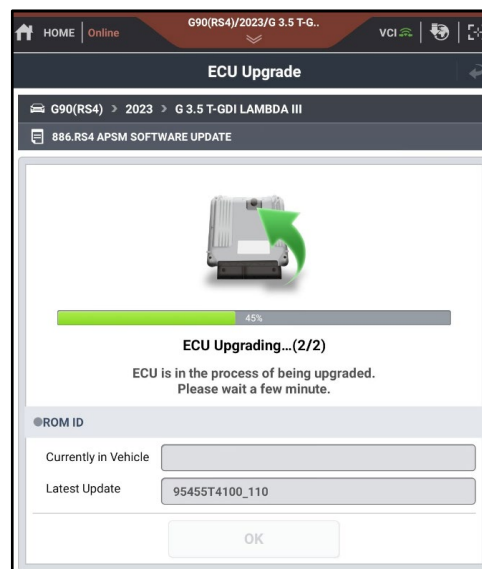
16. Upgrade (1/2) will begin, and the progress of the upgrade will appear on the bar graph.

Upgrade (1/2) will occur until 100% is reached on the bar graph.

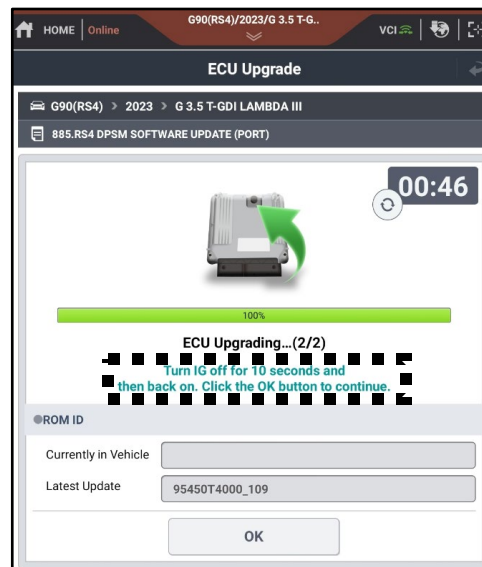


17. Upgrade (2/2) will begin, and the progress of the upgrade will appear in the bar graph.

Upgrade (2/2) will occur until 100% is reached on the bar graph.



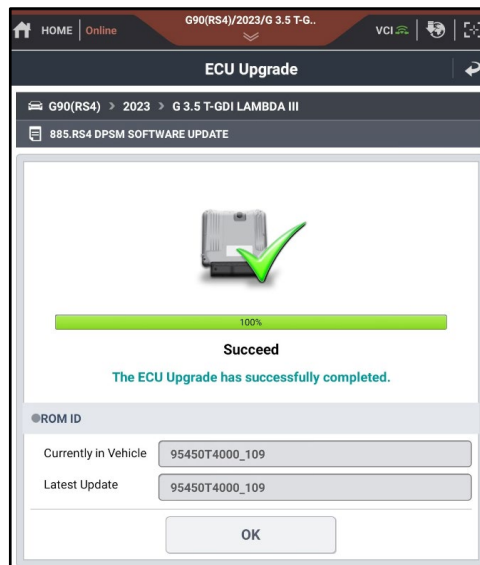
18. When upgrade reaches 100%, follow GDS instructions to “Turn IG off for 10 seconds and then back on. Click the OK button to continue.”



19. Click OK on the final screen, which indicates upgrade is complete.

NOTICE

Check the ICU ROM ID and compare it to the ROM ID Information Table to confirm latest ROM ID was updated.



20. Check if any incidental Diagnostic Trouble Codes (DTC) or check engine lights have been created by the update and clear the DTC(s) present.

Start the engine to confirm proper operation of the vehicle.

Confirm proper functionality of driver and passenger seats (seat recline, seat slide forward and backward, seat tilt, and seat height up and down).

