



# HYUNDAI Technical Service Bulletin

|                              |                                     |
|------------------------------|-------------------------------------|
| GROUP<br><b>CAMPAIGN</b>     | NUMBER<br><b>22-01-050H</b>         |
| DATE<br><b>NOVEMBER 2022</b> | MODEL(S)<br><b>Santa Cruz (NXT)</b> |

**SUBJECT:** NXT EMISSIONS SPECIFICATION STICKER RELABELING  
(SERVICE CAMPAIGN 980)

## ★ IMPORTANT

Dealers must perform this campaign on all affected vehicles prior to customer retail delivery and whenever an affected vehicle is in the shop for any maintenance or repair.

Access the “Vehicle Information” screen (VIS) via WEBDCS to identify open campaigns.

**Descriptions:** This bulletin describes the procedure to inspect and if necessary, place a new emissions specification label on top of the existing label. The label is located on the underside hood panel of the vehicle. The correct label is important for future state vehicle emission inspections.





**Labels ending with part number 2S170 or 2S171 belong to 2.5L Turbo-GDI Vehicles.  
New part number will end with 2S172.**



**Labels ending with part number 2S165 or 2S166 belong to 2.5L GDI Vehicles (non turbo).  
New part number will end with 2S168.**

**Applicable Vehicles:** Certain 2022MY Santa Cruz (NXT) vehicles produced from 05/26/2021 - 02/23/2022.

### Parts Information:

| MODEL                                | PART NAME                                    | PART NUMBER | FIGURE  |
|--------------------------------------|--|-------------|---|
| Santa Cruz (NXT)<br>2.5L Turbo       | Vehicle Emission Control Information Sticker | 32450-2S172 |  |
| Santa Cruz (NXT)<br>2.5L (non Turbo) |  | 32450-2S168 |  |

Circulate To: General Manager, Service Manager, Parts Manager, Warranty Manager, Service Advisors, Technicians, Body Shop Manager, Fleet Repair

**Warranty Information:**

| MODEL            | OP CODE  | OPERATION  | OP TIME | CAUSAL PART | NATURE CODE | CAUSE CODE |
|------------------|----------|--|---------|-------------|-------------|------------|
| Santa Cruz (NXT) | 20DA04R0 | Emissions Specification Label Inspection & Replacement | 0.2 M/H | 32450-2S168 | B1A         | ZZ7        |
|                  | 20DA04R1 | Emissions Specification Label Inspection               | 0.2 M/H | 32450-2S168 | B1A         | ZZ7        |

**NOTE 1:** Submit claim on Campaign Claim Entry Screen.

**NOTE 2:** If a part that is not covered by this campaign is found in need of replacement while performing this Campaign and the affected part is still under warranty, submit a separate claim using the same repair order. If the affected part is out of warranty, submit a prior approval request for goodwill consideration prior to performing the work.

**NOTE 3:** The incident parts (if applicable) are subject to callback through the normal Warranty Technical Center (WTC) parts return process.

**NOTE 4:** A STUI picture of the already installed or newly installed emissions label (ending in S168 or S172) along with a piece of paper displaying the last 6 digits of the VIN and the date of the repair must be included and uploaded to STUI. If not included, claim will be subject to debit.

**STUI**



**This TSB includes a STUI picture as a requirement.** The STUI picture requires the VIN and date of the repair to be clearly visible. Please include the last 6 digits of the VIN and date of the repair on a piece of paper next to the emissions label (either ending in S172 or S168, depending if turbo or non-turbo). Ensure the captured picture is completed according to the steps in the TSB. **All submitted claims without an associated STUI picture that do not capture the VIN, repair date, and emissions label are subject to debit. In addition, any claims found to have an illegible, incomplete, missing, or incorrect picture are subject to debit.**

**Service Procedure:**

1. Open the hood panel and locate the emissions label outlined in the figure to the right.



**Information**

**Identify which engine the vehicle is equipped with. The type of engine will determine the necessary label.**

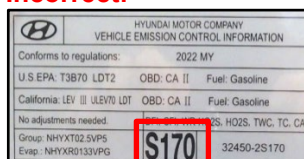


2. Inspect the existing emissions label to confirm if it is the correct one:

- **Incorrect:** Go to step 3.
- **Correct:** Go to step 5.

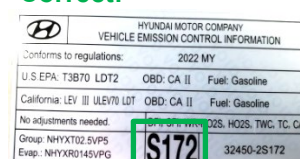
**2.5L Turbo Engine:**

**Incorrect:**



**(S170 or S171)**

**Correct:**



**2.5L Engine (non turbo):**

**Incorrect:**



**(S165 or S166)**

**Correct:**



3. Clean the emissions label that is currently on the underside of the hood from any dirt and debris. The old emissions label will be used as a template showing where to place the new label.



**Information**

**Do not attempt to remove the existing emissions label.**

4. Place the new emissions label over the pre-existing label.

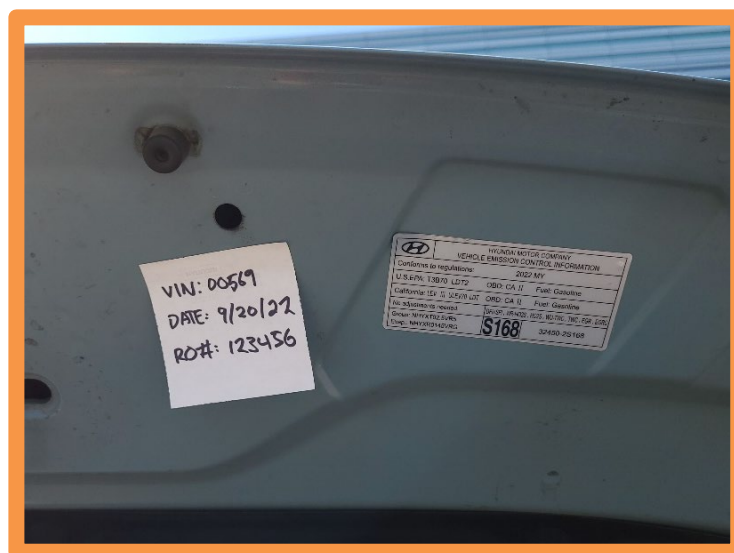
5.

**STUI**



**Using STUI, photograph the already installed updated label or newly installed emissions label (label must end in S172 or S168, depending if turbo or non-turbo) along with the last 6 digits of the VIN and the date of the repair on a piece of paper.**

**Upload the photo to STUI.**



6. The service procedure is complete.