

REPLACEMENT OF THE TOP TRIPLE CLAMP

AFFECTED MODELS:

2020 690 Enduro R
2021 690 Enduro R

RESTRICTIONS: AFFECTED MODELS ARE LINKED BY VIN IN KTM DEALER.NET

INITIAL INFORMATION:

Due to deviations in a batch of raw materials used to produce the top triple clamp it has been discovered that cracks may form on the top triple clamp on some motorcycles. Accordingly, the top triple clamp needs to be replaced on the affected motorcycles that are linked to this bulletin by VIN in KTM Dealer.net.

Dealers must perform the top triple clamp replacement on all affected motorcycles in their inventory prior to any customer delivery. Please contact all of your customers who own affected motorcycles to have the top triple clamp replaced as soon as possible.

PROCEDURE FOR REPAIR:

We shall not provide a description of general workshop methods. Likewise, safety rules that apply in a workshop are not specified here. It is assumed that the repair work will be performed by a fully trained mechanic who has completed training or has a corresponding qualification. In the event of uncertainty, the most recent repair manual must be consulted.

In the interest of clarity, some components may be shown disassembled or may not be shown at all. It is not always necessary to disassemble the component to perform the activity in question. Please follow the instructions in the text.

1. Remove the headlight mask with headlight and front fender according to the repair manual.
2. Raise the motorcycle using the rear wheel stand and large front wheel stand.
3. Remove screws (1) and pull the instrument support to the front (Fig.1).
4. Remove the handlebar clamp and hang the handlebar to the front.
5. Remove screws (1, 2, 3) and carefully remove triple clamp (Fig.2).
6. Remove components (4, 5, 6, 11) on the old triple clamp in (Fig.3).
7. Mount components (4, 5, 6, 11) on the new triple clamp and tighten (Fig.3).
8. Mount components (8, 9) on the new triple clamp but do not tighten yet (Fig.3).
9. Make sure that O-ring (4) and protective ring (5) are in the right position (Fig.4).
10. Carefully slide the new triple clamp onto the fork legs and the shift fork shaft.
11. Make sure they are in the correct position and tighten the triple clamp according to the repair manual (Table 1).
12. Position and tighten the handlebar and handlebar clamp (Table 1).
13. Position and tighten instrument support (Table 1).
14. Remove the wheel stands and lean the motorcycle on the side stand.
15. Install the headlight mask with the headlight and front fender according to the repair manual.
16. Perform a function control and test ride.

COPYRIGHT NOTICE: The user acknowledges that all components of this technical information are KTM's and/or third parties' copyright protected property. Alteration, assignment, distribution and reproduction are forbidden.

LIMITATION OF LIABILITY: The information included in or available through this technical information may include inaccuracies or errors. In no event shall KTM and/or its suppliers be liable for any damages whatsoever, arising out of or in connection with the use of this technical information. Please always refer to the KTM owners and repair manuals for proper instructions or contact the KTM Dealer Services Department.

KTM NORTH AMERICA, INC.

38429 Innovation Court // Murrieta, CA 92563
1119 Milan Avenue // Amherst, OH 44001
8701 Rue Samuel-Hatt // Chambly, QC J3L-6V4
www.ktm.com



Note:

If no large front wheel stand is available, hold the fork legs in position with an assistant so that the upper steering head bearing is not pushed out.

- Make sure that the bushings on the instrument support remain in place.
- When setting down components, protect their surfaces appropriately.

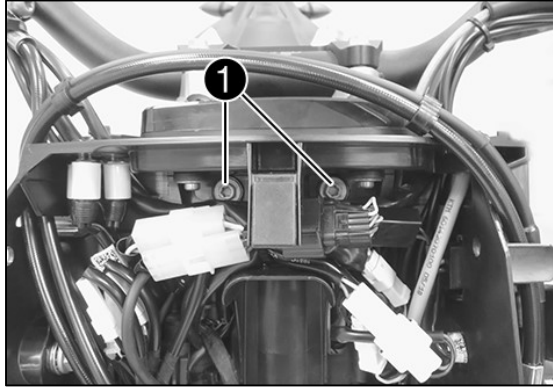


Fig. 1

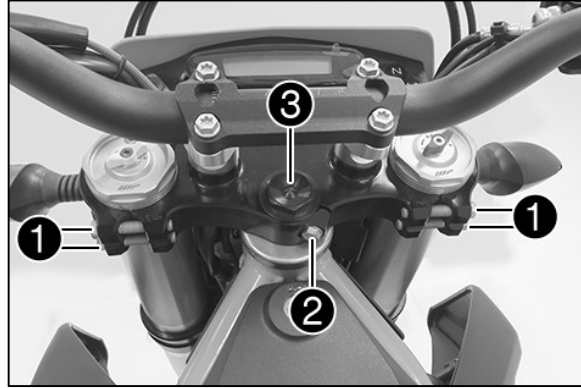


Fig. 2

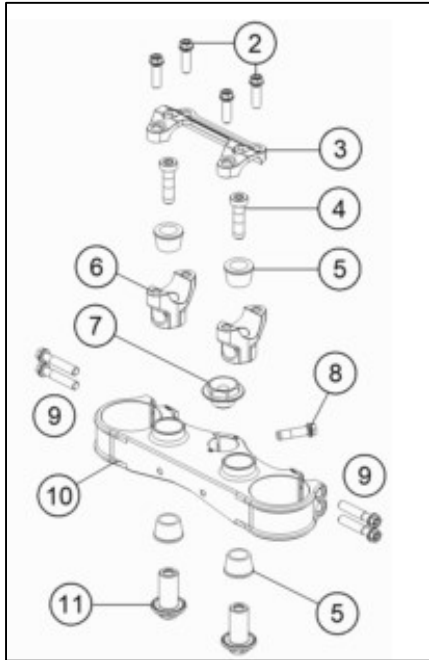


Fig. 3

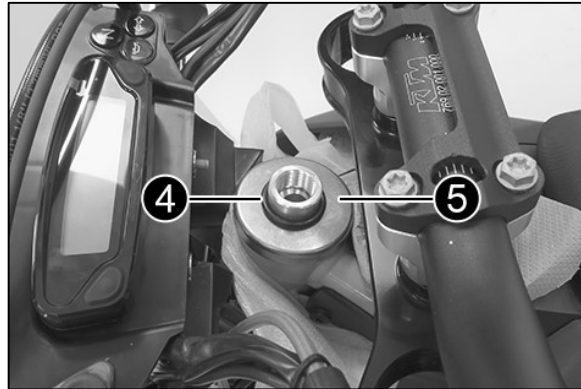


Fig. 4



Fig. 5

COPYRIGHT NOTICE: The user acknowledges that all components of this technical information are KTM's and/or third parties' copyright protected property. Alteration, assignment, distribution and reproduction are forbidden.

LIMITATION OF LIABILITY: The information included in or available through this technical information may include inaccuracies or errors. In no event shall KTM and/or its suppliers be liable for any damages whatsoever, arising out of or in connection with the use of this technical information. Please always refer to the KTM owners and repair manuals for proper instructions or contact the KTM Dealer Services Department.

KTM NORTH AMERICA, INC.

38429 Innovation Court // Murrieta, CA 92563
 1119 Milan Avenue // Amherst, OH 44001
 8701 Rue Samuel-Hatt // Chambly, QC J3L-6V4
 www.ktm.com



Replaced top triple clamps must be returned to the KTM Warranty Department at 1119 Milan Ave. Amherst, OH 44001. Warranty Claims will only be processed after the replaced parts have been received. Parts must be tagged and include a copy of the claim.

Table 1 - Screw connections and torques

Component	Screw	Torque	Comment
Screw, handlebar mount	M10x35	45 Nm	Medium strength thread lock (e.g. Loctite® 243™)
Screw, top steering head	M20x1.5	12 Nm	
Screw, top triple clamp	M8x40	17 Nm	
Screw, steering stem	M8x30	20 Nm	
Screw, handlebar clamp	M8x25	20 Nm	
Screw, instrument support	M6x15	10 Nm	

PARTS ORDERING:

Please order the following for each affected motorcycle:

- 1 QTY. 27001134223C1 – Top triple clamp

COPYRIGHT NOTICE: The user acknowledges that all components of this technical information are KTM's and/or third parties' copyright protected property. Alteration, assignment, distribution and reproduction are forbidden.

LIMITATION OF LIABILITY: The information included in or available through this technical information may include inaccuracies or errors. In no event shall KTM and/or its suppliers be liable for any damages whatsoever, arising out of or in connection with the use of this technical information. Please always refer to the KTM owners and repair manuals for proper instructions or contact the KTM Dealer Services Department.

KTM NORTH AMERICA, INC.

38429 Innovation Court // Murrieta, CA 92563
 1119 Milan Avenue // Amherst, OH 44001
 8701 Rue Samuel-Hatt // Chambly, QC J3L-6V4
 www.ktm.com



WARRANTY INPUT INFORMATION:

This Technical Bulletin only affects certain VIN numbers! Please check the VIN by performing a Motorcycle History search in KTM Dealer.net to determine if it's affected. If the motorcycle is affected, you will see a link to the bulletin and its repair status in the history results. KTM North America will not warranty motorcycles whose VIN numbers are not linked as this bulletin does not apply to them. It is the responsibility of the dealer to determine if the motorcycle requires this update by checking the vehicle history and understanding the instructions provided by this bulletin.

To submit a TI claim click the orange arrow on the right side of the corresponding Technical information message to start the claim process.

You can now choose the TI Number from the list. The TI number for this procedure is according to the repairs performed and listed in the warranty claim input information; click **Continue with selected action code**. The Warranty Claim is automatically entered for you, including parts & labor. You must enter additional information in the required fields marked with an asterisk "*" before submitting the claim to KTM. The flat rate time for this repair is based on the action performed and provided in minutes.

Warranty type:
TI warranty
Component group:
01 – Triple clamp
Failure code:
900 – Failure identification by manufacturer
Failure causing part:
2700103422330 – Top triple clamp
Action code, parts, labor time:
Replacement of top triple clamp
Action code: 01_2090895_00
Labor time: 45 minutes
Parts: 1 QTY. 27001134223C1 – Top triple clamp
Are stock items affected: No

COPYRIGHT NOTICE: The user acknowledges that all components of this technical information are KTM's and/or third parties' copyright protected property. Alteration, assignment, distribution and reproduction are forbidden.

LIMITATION OF LIABILITY: The information included in or available through this technical information may include inaccuracies or errors. In no event shall KTM and/or its suppliers be liable for any damages whatsoever, arising out of or in connection with the use of this technical information. Please always refer to the KTM owners and repair manuals for proper instructions or contact the KTM Dealer Services Department.

KTM NORTH AMERICA, INC.

38429 Innovation Court // Murrieta, CA 92563
 1119 Milan Avenue // Amherst, OH 44001
 8701 Rue Samuel-Hatt // Chambly, QC J3L-6V4
 www.ktm.com

