



TECH TIP

DX3 DOSING CONTROL UNIT (DCU) PROGRAMMING

**GROUP: 0-GENERAL
TECH TIP NO: TT-22-021
DATE: 11-10-2022**

SUBJECT VEHICLES: 11MY-21MY Conventional Trucks equipped with a J08 engine or 13MY-20MY Cab Over Engine (COE) trucks equipped with a J05 engine.

OVERVIEW:

The purpose of this procedure is to provide instructions in performing DCU programming on 2011 and newer Conventional or COE series trucks.

Note: This technical tip is provided as technical information and is not authorization for a warrantable repair.

REPAIR PROCEDURE:

Note: Be sure to change the Unit Settings in DX3.

Click **Settings** (gear in the upper right) > **Unit Setting** and then mirror the settings below, click **OK**. Log out of DX3, then log back in to hold new settings for future DX3 connections and data monitoring.

[B1014]

Unit Setting

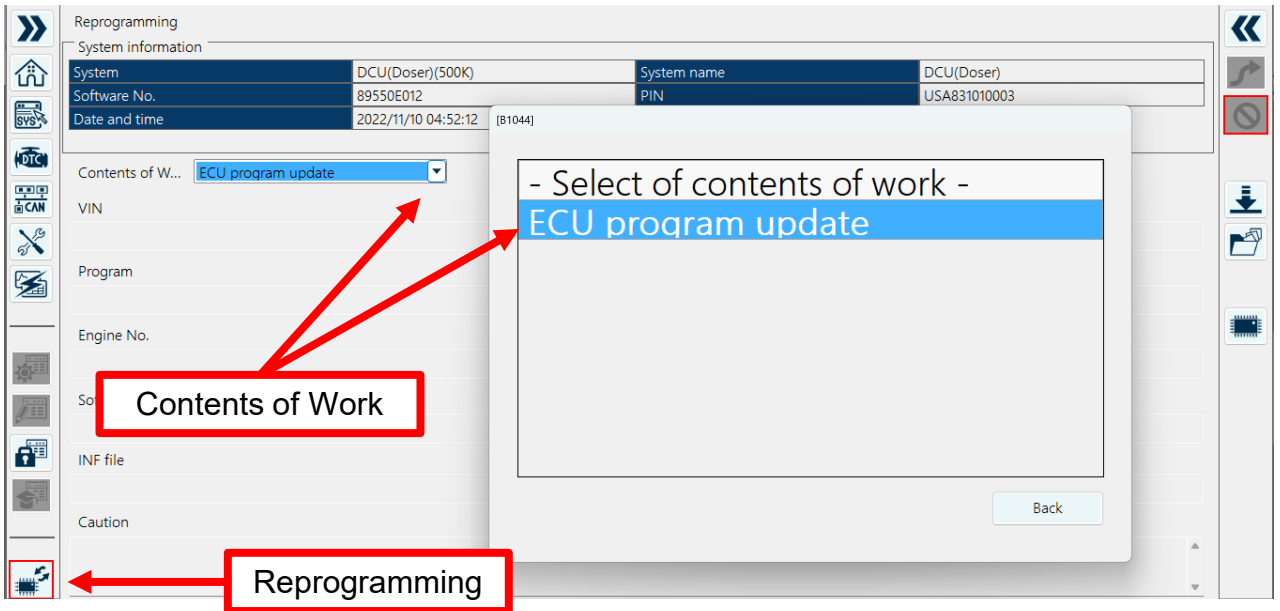
Distance	Mile(mile)	▼
Speed	Mile per hour(mph)	▼
Acceleration	Mph/sec(mph/sec)	▼
Capacity	US Gallon(gal)	▼
Fuel consumption rate	Mile per US Gallon(mpg)	▼
Fuel consumption rat...	Mileage per Liter(km/L)	▼
Temperature	Fahrenheit(° F)	▼
Horsepower	Horsepower(hp)	▼
Torque	Foot pounds (lb-ft)	▼
Pressure	Pound per Square Inch(PSI)	▼
Pressure (Mp)	Pound per Square Inch(PSI)	▼

OK Cancel

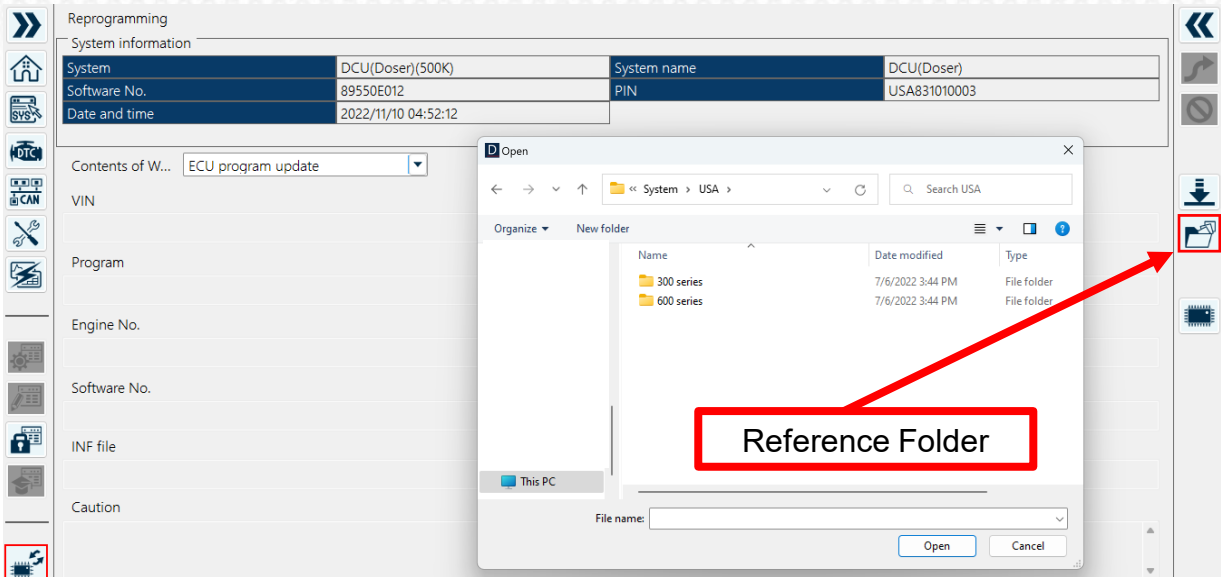


1. Perform read out of all modules. Next to the module, verify DCU software to confirm is an update is needed.

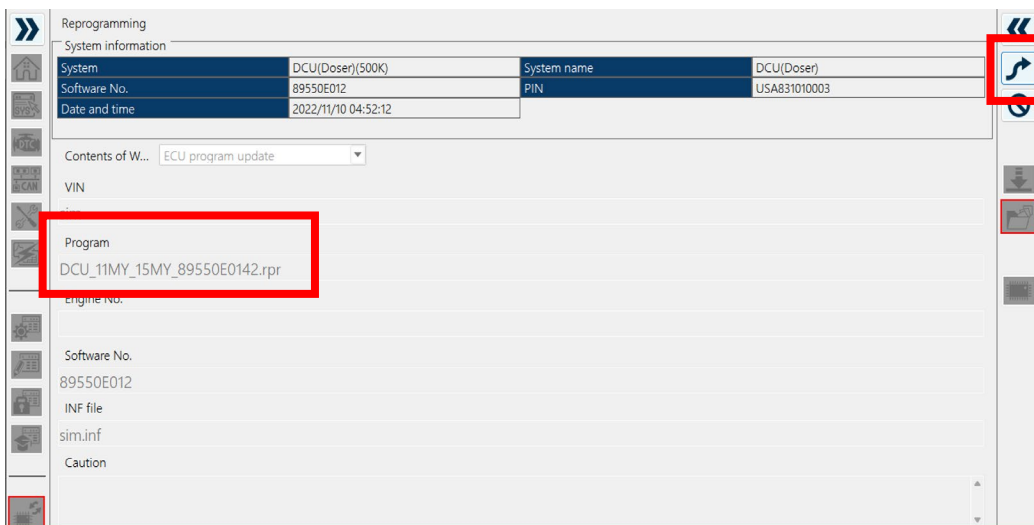
2. Select **Reprogramming** in the lower left, select **Contents of Work** drop down and select **ECU Program Update**.



3. Select **Reference** folder on the right side and navigate to the following folder; **(C:) drive > HinoServiceApplications > HinoDX3 > HinoDX3 > Reprodata > System > USA > Select 300 or 600 Series > DCU** and then select the correct file based on the model year truck needing to be programmed.



4. Verify the program number selected and click **Next** in the upper right to continue.



5. Verify judgments and click *Write to ECU*.

Reprogramming
System information

System	DCU(Doser)(500K)	System name	DCU(Doser)
Software No.	89550E012	PIN	USA831010003
Date and time	2022/11/10 05:02:45		

Contents o... ECU program update

	rpr file set value	Set value from ECU	Judgment
VIN	sim	sim	■
Engine No.			■
Software No.	89550E012	89550E012	■
Battery check	PC battery	Vehicle battery	-
Verify result	No problem. Is reprogrammable.		■

Write to ECU

6. Follow the screen prompts through programming as offered. Once programming has completed, verify **Before Work software** and **After Work software** to ensure software has been updated, then click **OK**.

Reprogramming
System information

System	DCU(Doser)(500K)	System name	DCU(Doser)
Software No.	89550E012	PIN	USA831010003
Date and time	2022/11/10 05:02:45		

Contents o... ECU program update

[R1006]

Reprogramming result view

Before work

VIN	sim
Engine No.	
Software No.	J08EVB88888
Software No.	89550E012

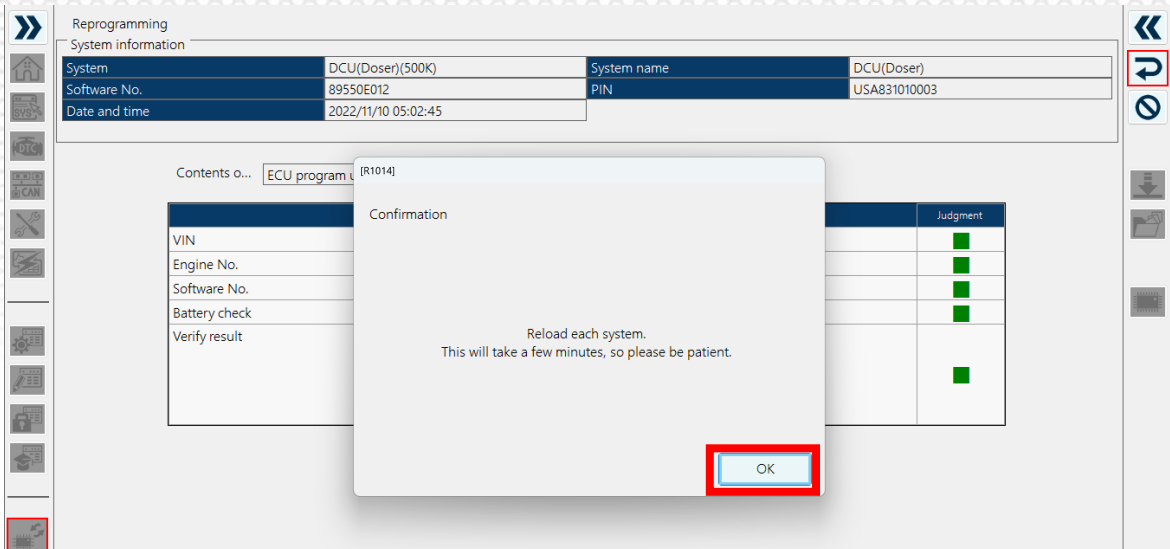
After work

VIN	sim
Engine No.	
Software No.	89550-E0142

ECU reprogramming completed.
Check and delete any DTC's for all ECU's connected to the vehicle.

Print OK

7. Allow DX3 to reload each system by clicking **OK**.



8. Once the reload has completed, turn the key off for two minutes, turn the key back on, clear all codes and reset SCR related memory.