



SERVICE BULLETIN

Subject: General Software Improvement Bulletin Bulletin Type: Field Fix Conditional

Bulletin No: TS45-FC-2205

PQR No:500000007084

Rev No: 00

Ref. No:700004111

Vehicle Model: TS45

Flat Rate Time / Code:90 min

Date of issue: 18.10.2022

Modify Before: 18.10.2023

What to do with off coming parts:

- Scrap
- Return
- Use with additional parts
- On consignment
- No off coming parts

What to do with outstanding parts of previous revision:

- Scrap
- Return
- Use with additional parts
- On consignment
- No outstanding parts

Description of the modification:

The purpose of the bulletin is to ensure the improvement of DTC codes.

Bulletin Responsible: Abdulsamed ÇİFTÇİOĞLU

Published & Approved By: Gokhan Avcilar

SAFETY INSTRUCTIONS

1. Mechanical Requested Dress Code



WARNING:

- Dress properly to avoid personal injury and damage to the vehicle

- ✓ Always wear protective clothing
- ✓ Do not wear any worn or loose-fitting clothing
- ✓ Remove jewelry before starting to work
- ✓ In case of long hair, use hairnet
- ✓ The illustration on the left shows some of the correct and incorrect clothing
- ✓ Sharp edged items should be avoided in order not to scratch vehicle (i.e. belts, watches, necklace)

2. Protect Seats when Mechanic Starts Working



- ✓ Seats, trimming, upholstery stuff and carpeting should be protected with appropriate coverings.

3. Welding on the Chassis

- a. Always disconnect the batteries (starting with the negative lead).
- b. Disconnect the connectors of electrical and electronic equipment (electronic control units, sensors and actuators) if they are less than 2 meters away from the chassis part to be welded or the earth terminal of the welding equipment.
- c. The earth terminal should never be attached to vehicle components such as engine, axles and springs. Arcing on these parts is not permitted, because of the risk of damage to bearings, springs, etc.
- d. The earth terminal must make good contact and be placed as close as possible to the part to be welded.
- e. Plastic pipes, rubber parts and parabolic springs should be well protected against welding spatter and temperatures higher than 70°.
- f. The contact switch must not be in the accessory or contact position. The contact key should be removed.
- g. Reconnect in reversed order of disconnecting. Ensure that a good earth connection is made between chassis, engine and cab.

INCLUDED PARTS LIST

	Part No	Part Name	Picture	Qty	Unit of Measure

The program Link

Multiviu :

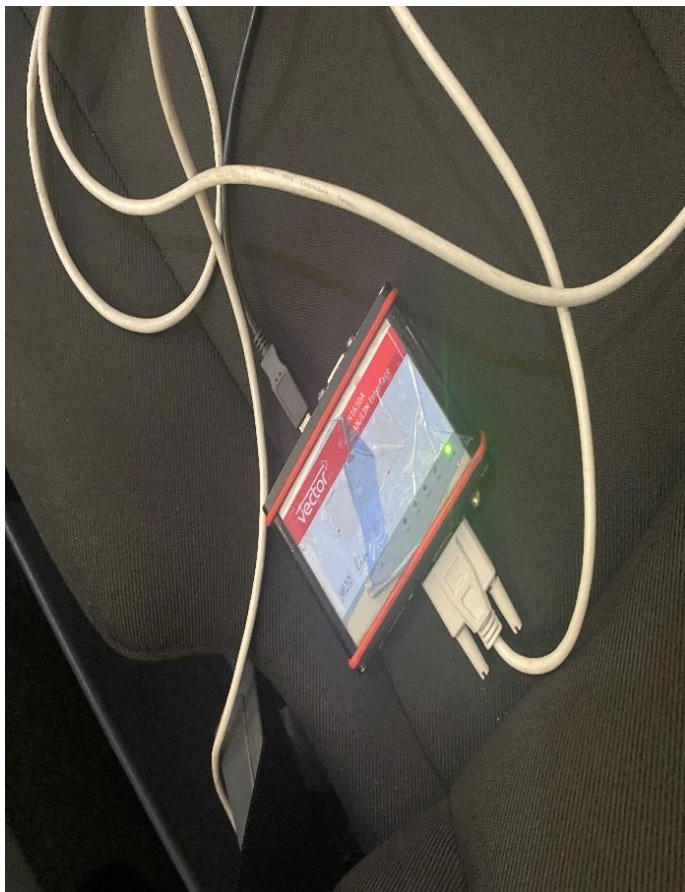
****TS00-MV-020 software should be installed on vehicles with software starting with TS00-MV-...**

https://content.temsa.com/ContentServer/ContentServer.dll?get&pVersion=0045&contRep=ZADNSPEKTE P07101&docId=90E2BA0455251EDD928EDDC8B8CEDF56&accessMode=r&compId=TS00_MV_020.L2P.zip

Uploading the up to date program (Multiviu):

- 1- Park the vehicle to an area which is proper to work.





Uploading the up to date program (Multiviu):

2-Connect your computer to the vehicle by using the CANalyzer interface. Plug the USB part into your computer and connect your CAN cable to the 9 pinned OBD port with the **D** pin low and the **C** pin high.



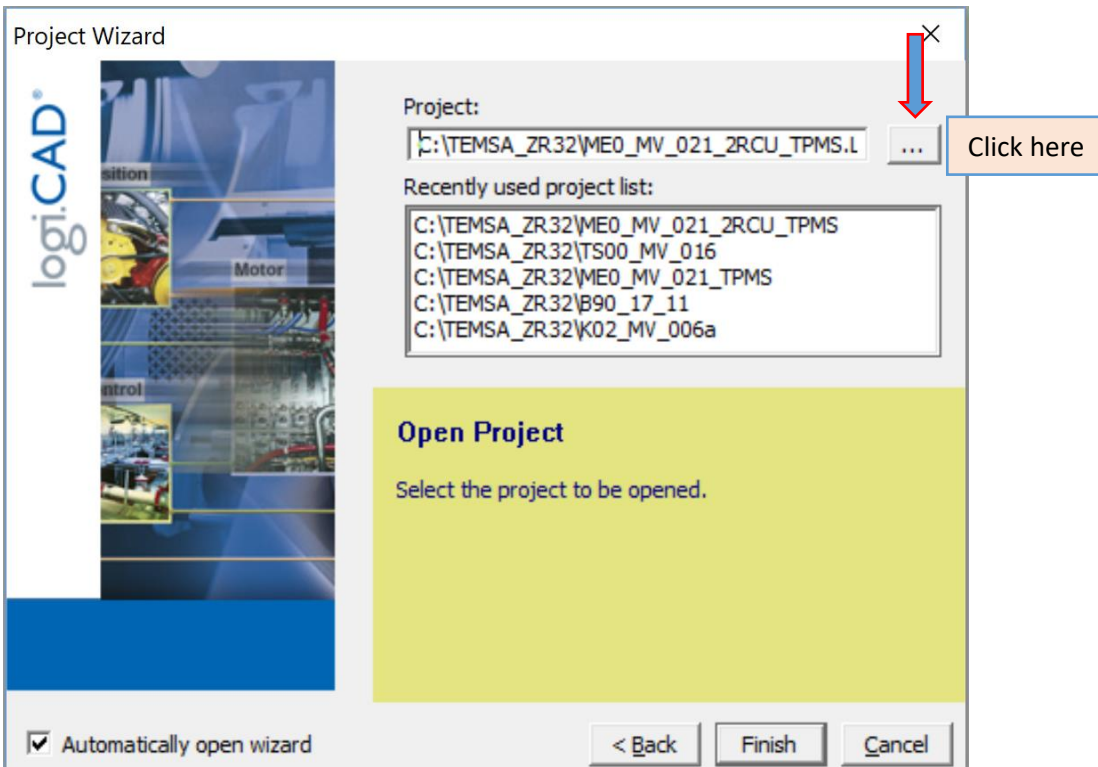
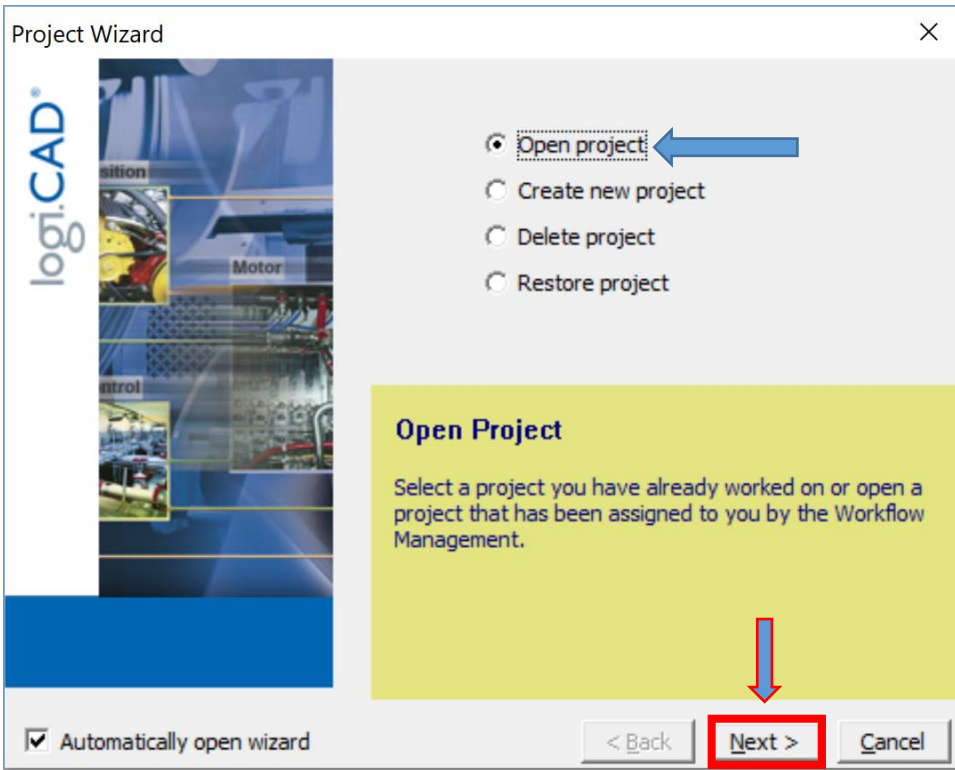


3- Turn the ignition switch on. Do not start the engine.

4- Make sure that the KIBES dongle is inserted to your computer.

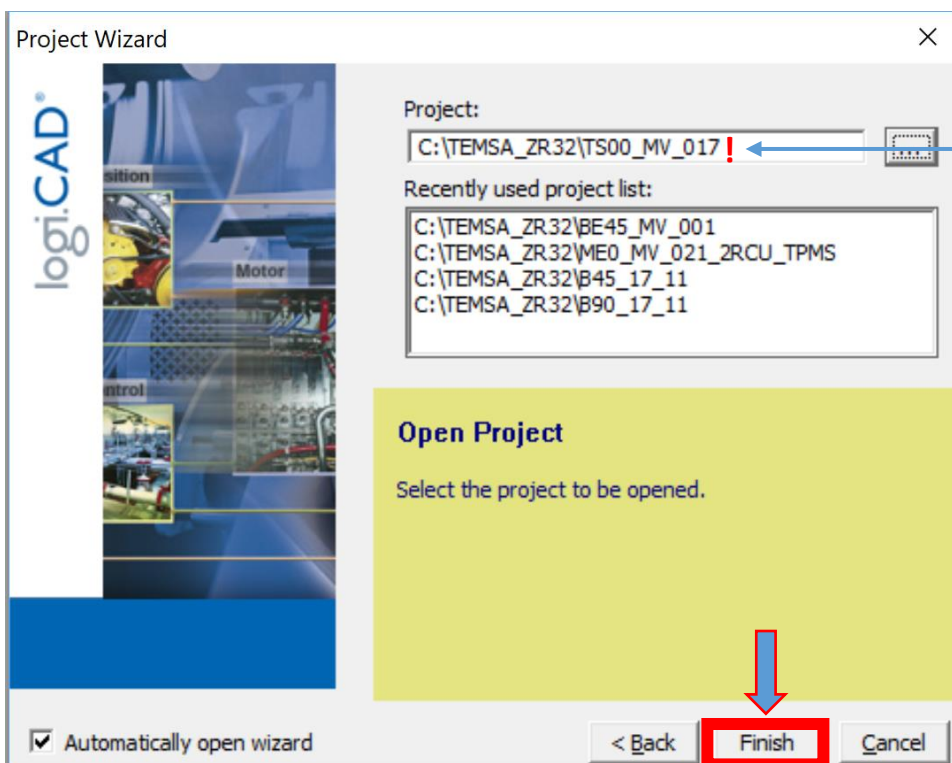
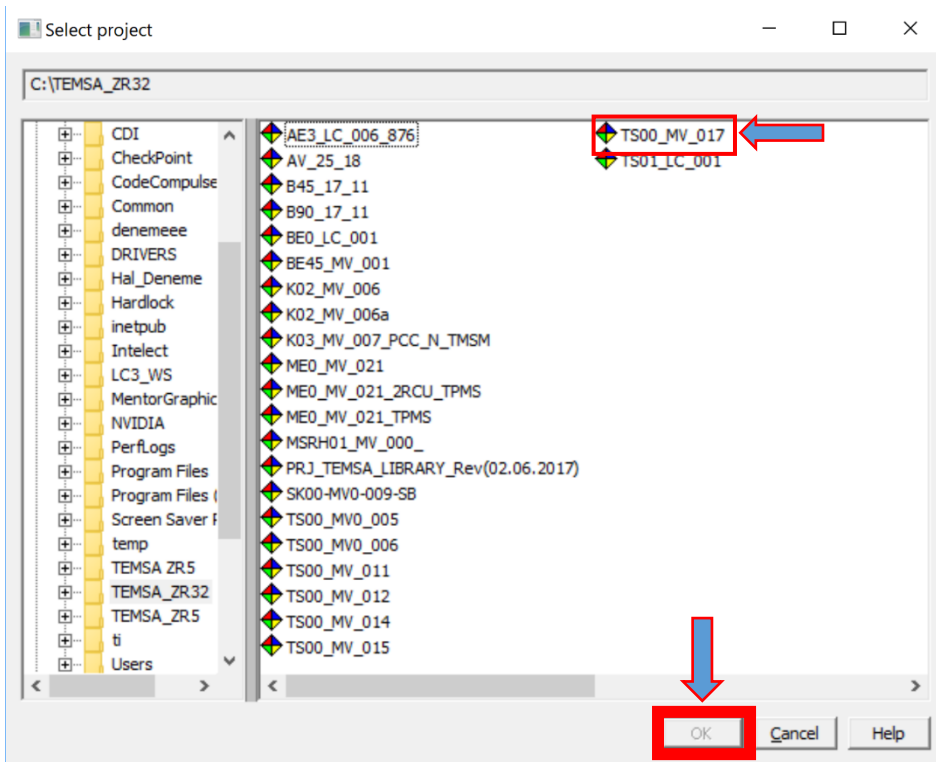


5- Select the "Open Project" selection and click "next".



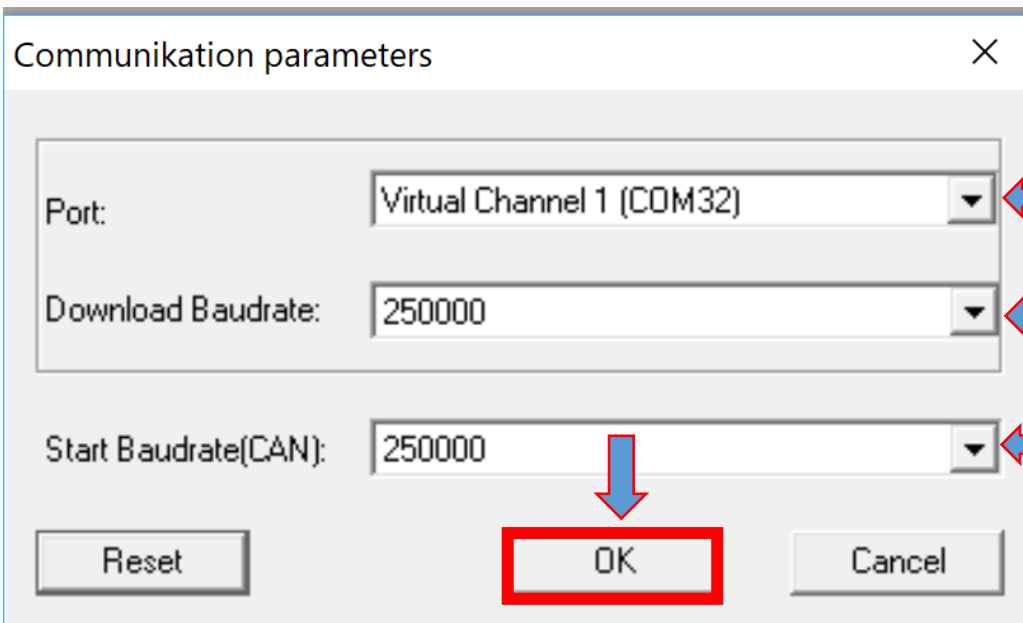
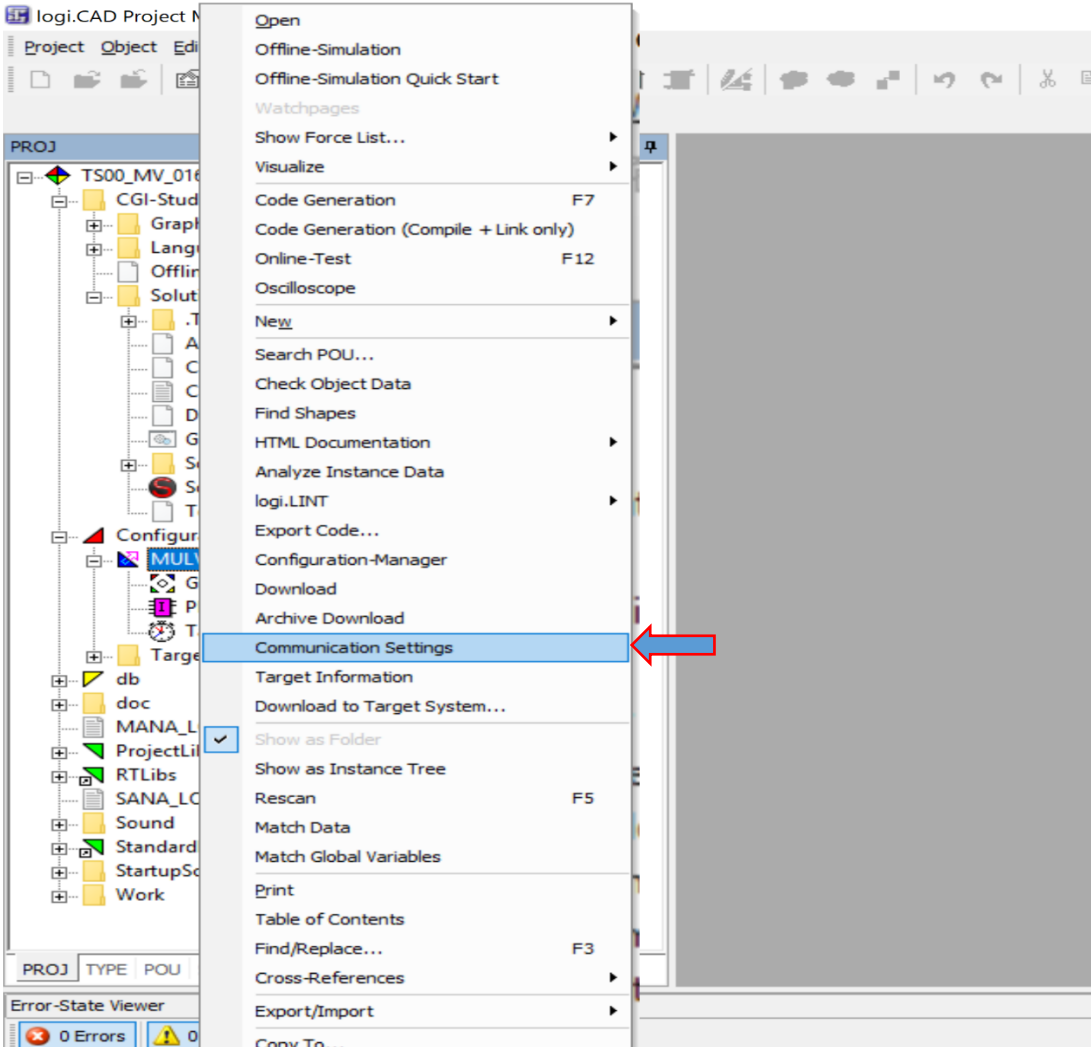
2- Select **TS00_MV_020**. Then click “ok” after that click “Finish”.

Hint: The software version must be selected correctly. The number shown in the picture may be representative.



Make sure you choose the right program.

7-Right click on Mulviu then click “Communication Settings” check the Port and Baudrate.

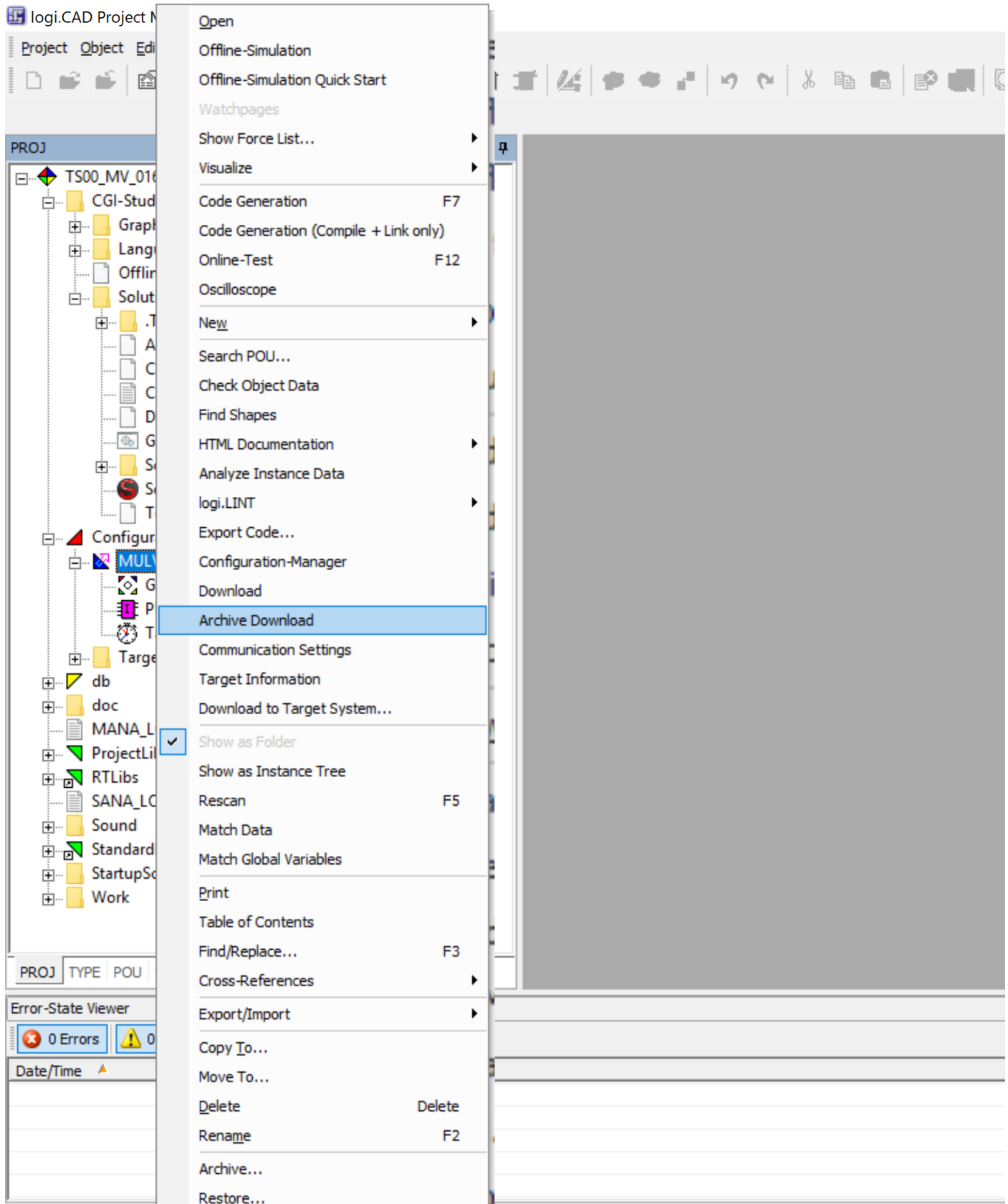


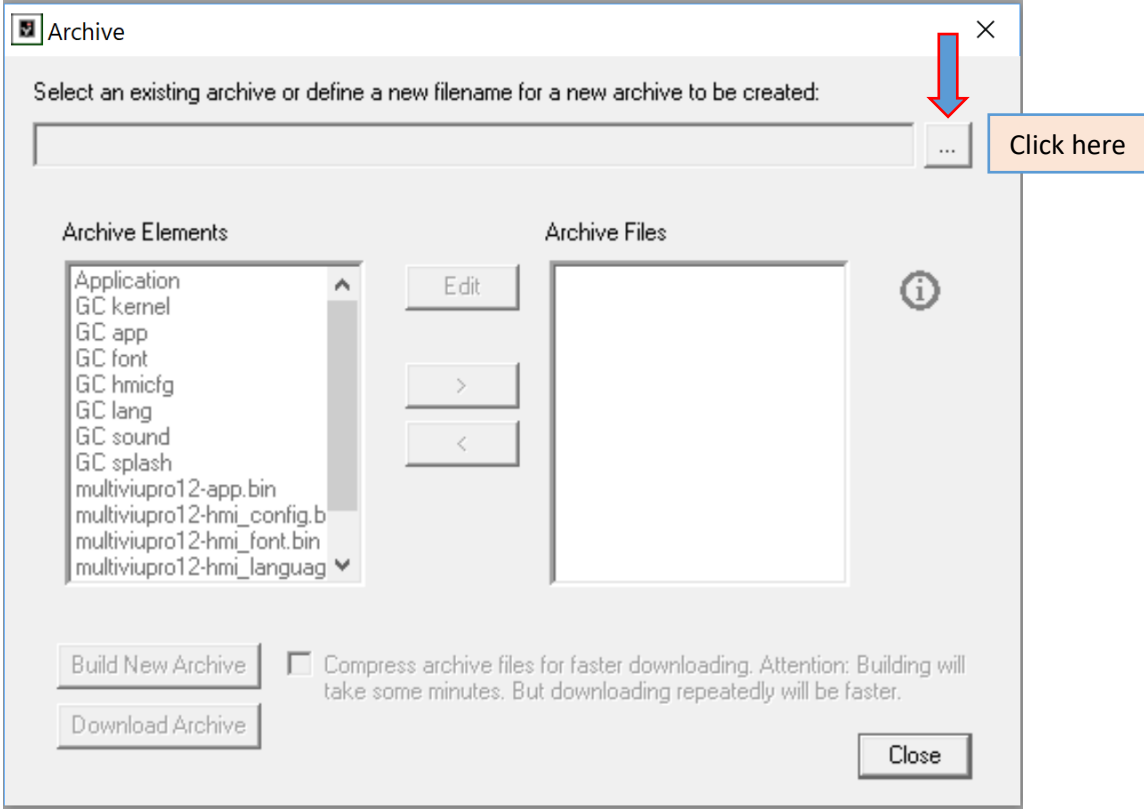
You can change port here. Please make sure correct port.

You can change “Download Baudrate” here

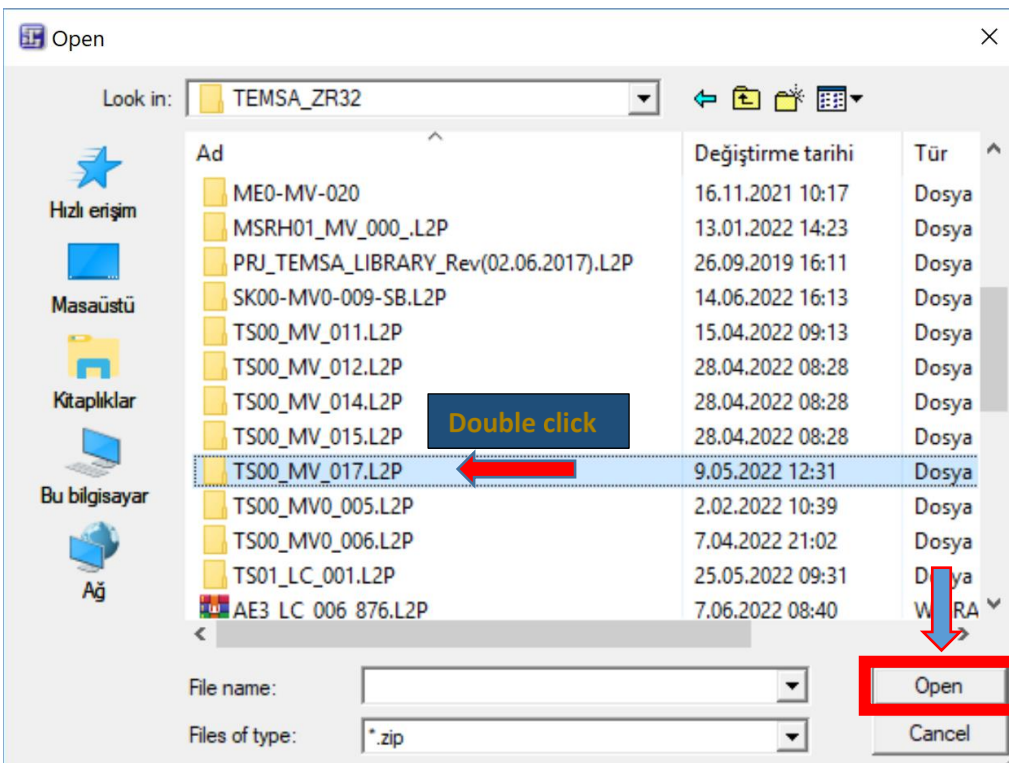
You can change “Start Baudrate” here

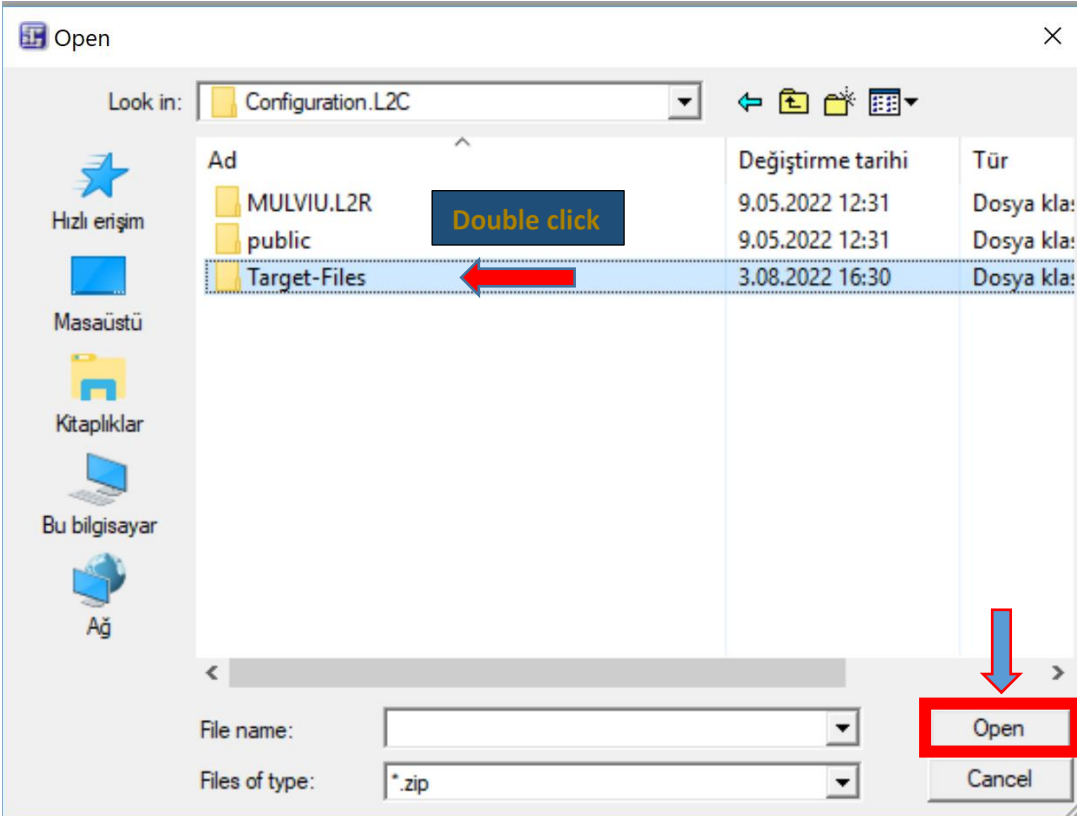
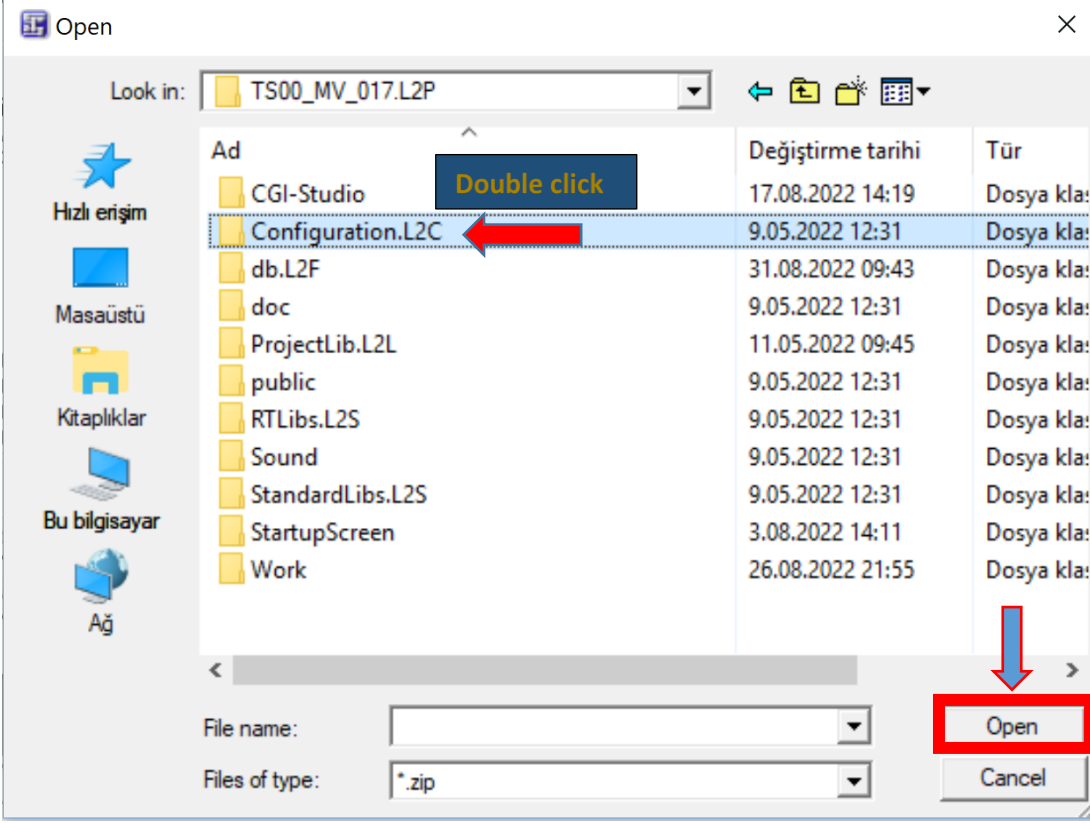
8-Right click on Mulviu again then click “Archive Download”



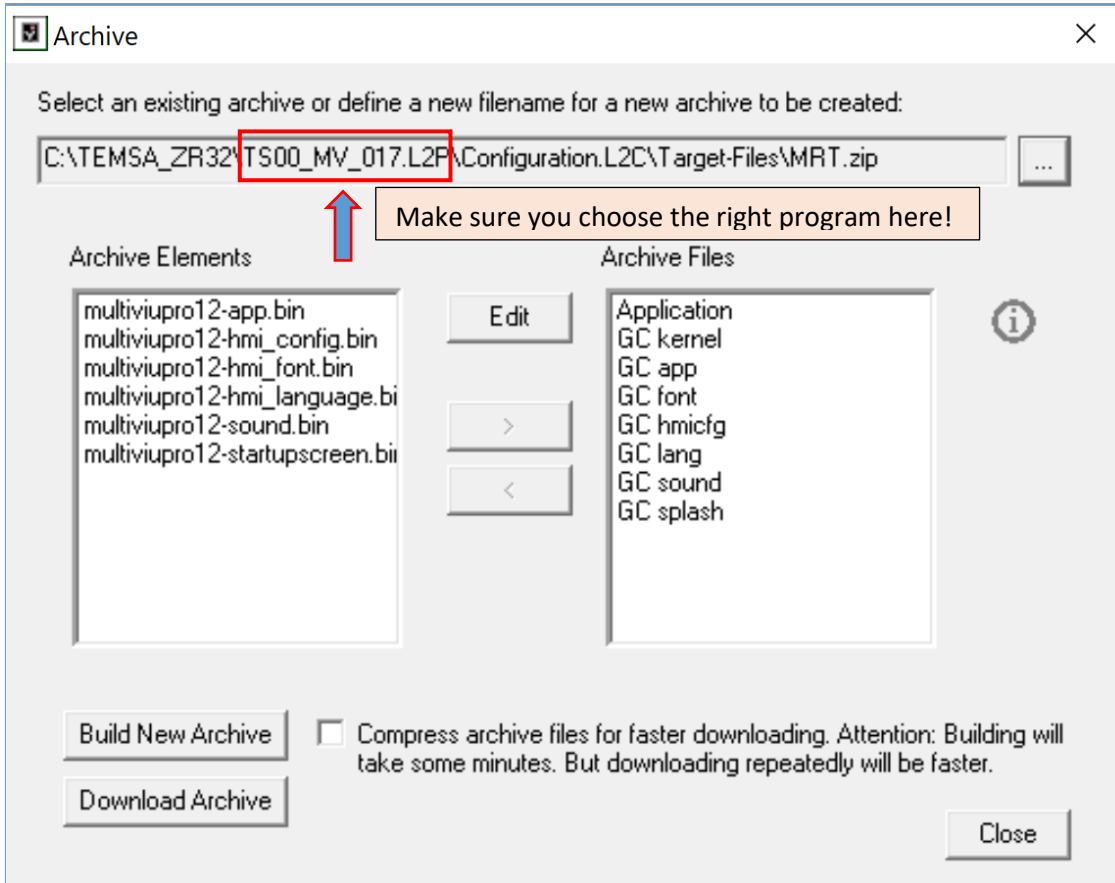
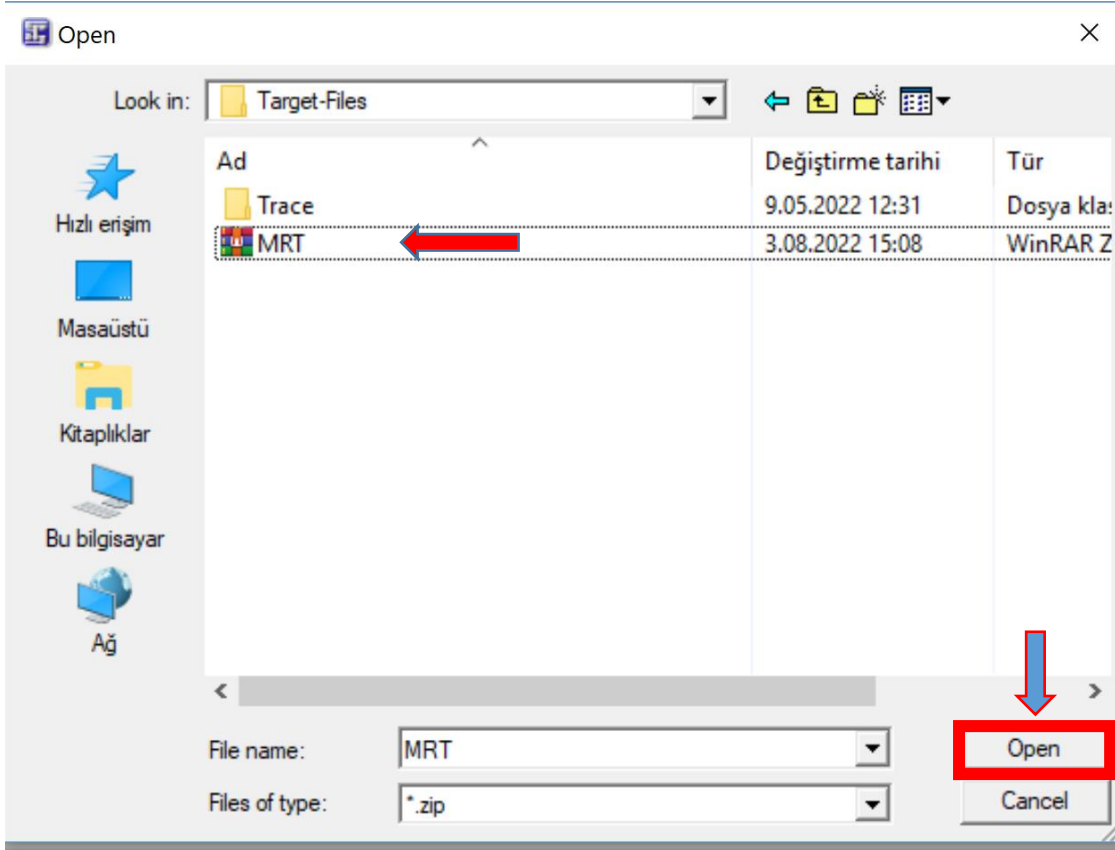


9- You should find program in your workspace then double click the program.





10- Click on “MRT” then click “Open”.



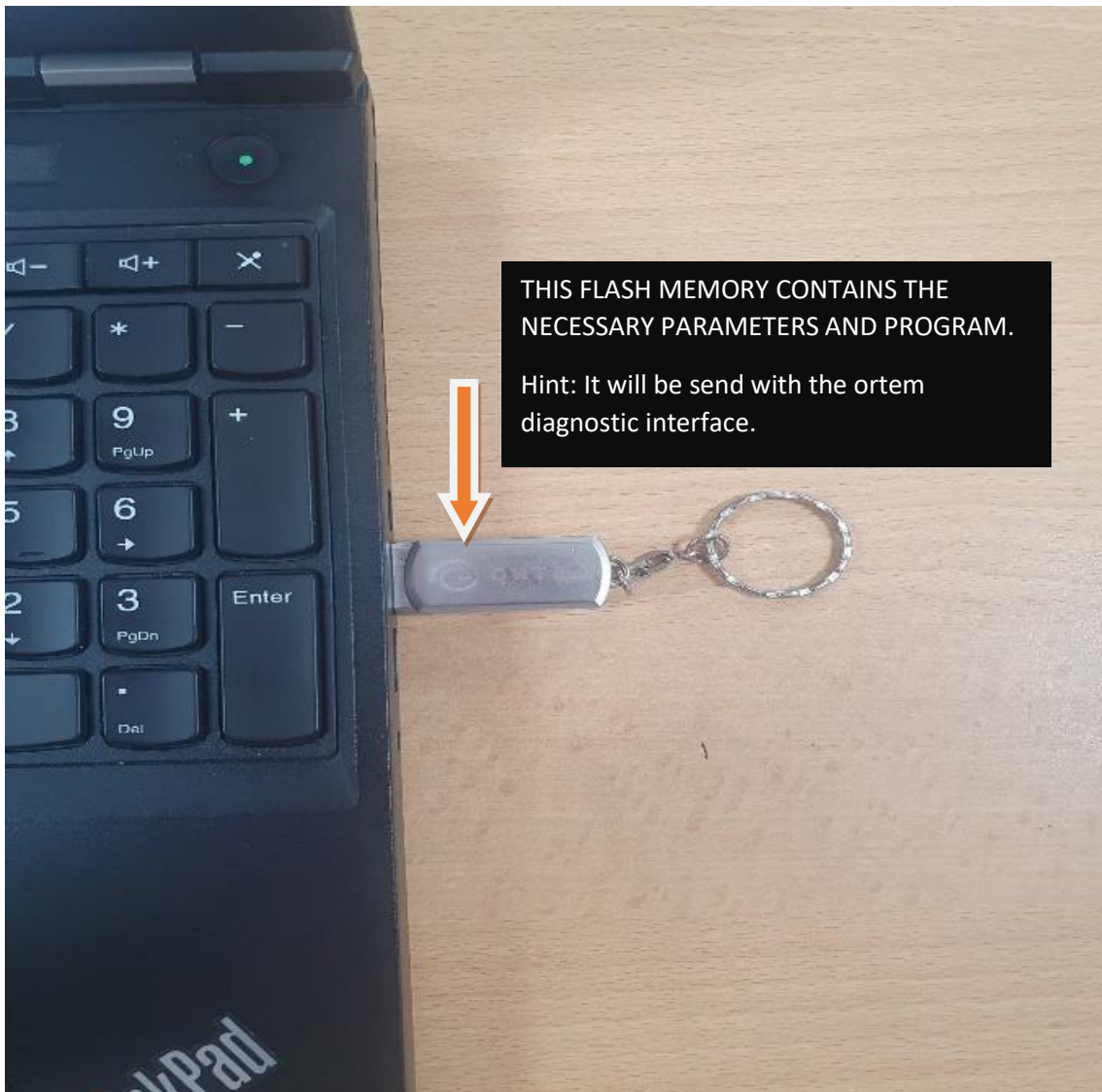
11- After the software is checked, click the “Build New Archive”, then click the “Archive Download” .

12-When a warning occurs, click OK, then wait for the program to be downloaded. Do not cut the power off during the download process, this could cause the body controller to dysfunction.

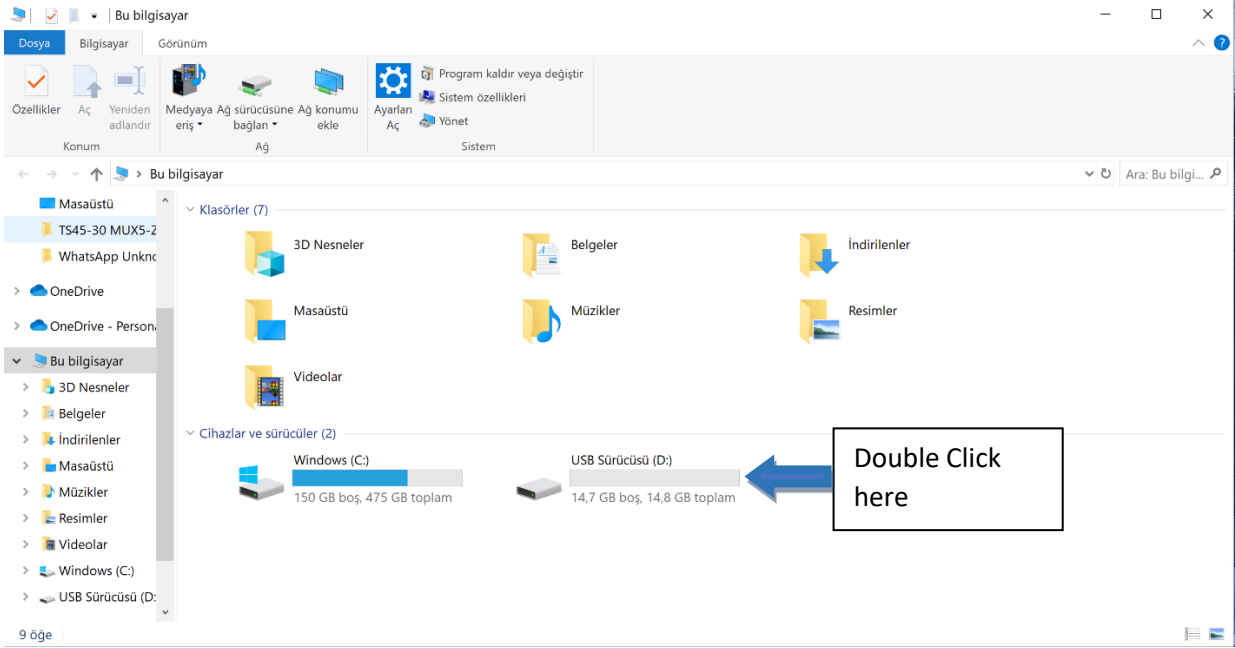
AFTER UPDATING THE SOFTWARE TS00-MV-020 , YOU SHOULD UPDATE ORTEM DIAGNOSTIC MODULE ACCORDING TO THE INSTRUCTION BELOW;

FIRST OFF ALL YOU HAVE TO INSTALL PROGRAM ON YOUR COMPUTER.

1.



2.



3. Double click "PROGRAM"

Ad	Değiştirme tarihi	Tür	Boyut
INTRODUCTION	12.09.2022 16:24	Dosya klasörü	
PROGRAM	12.09.2022 16:25	Dosya klasörü	
SOFTWARE	12.09.2022 16:25	Dosya klasörü	

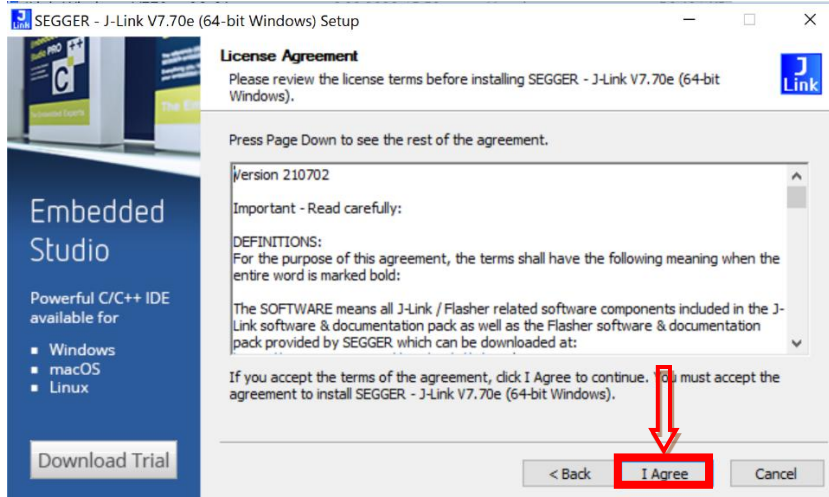
4. Double click "JLink_Windows_V770e_x86_64.exe"

Ad	Değiştirme tarihi	Tür	Boyut
JLink_Windows_V770e_x86_64.exe	6.09.2022 15:52	Uygulama	56.481 KB

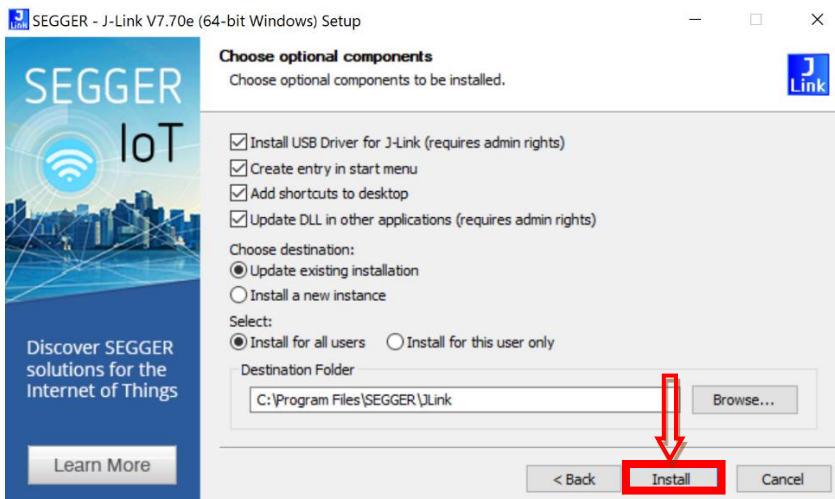
5.



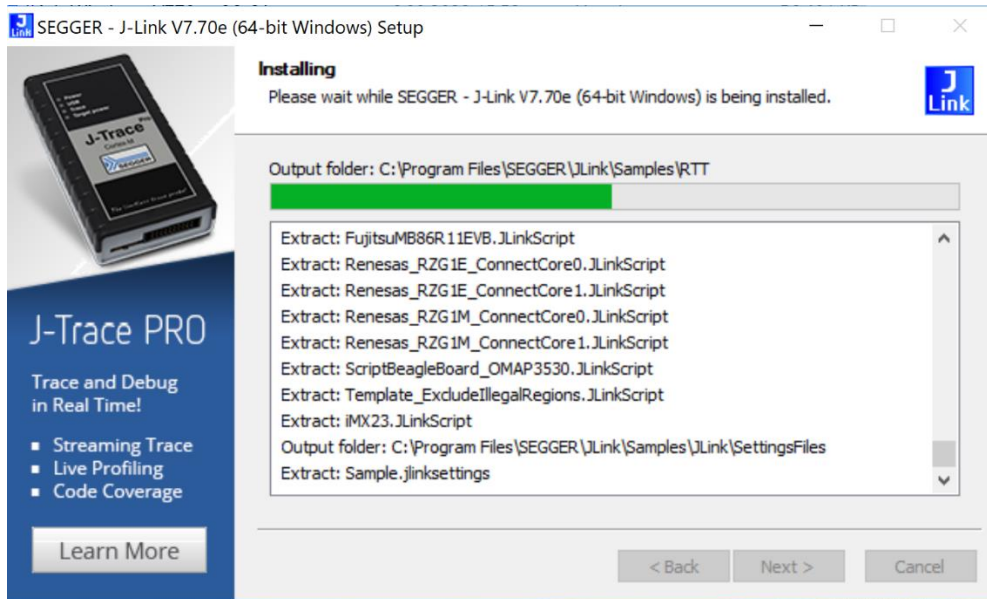
6.



7.



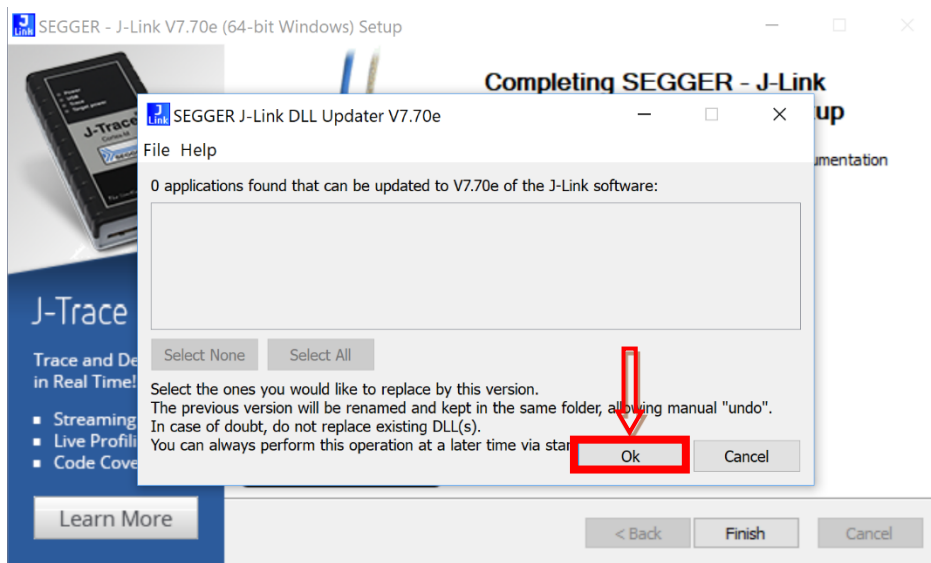
8. Program installing please wait.



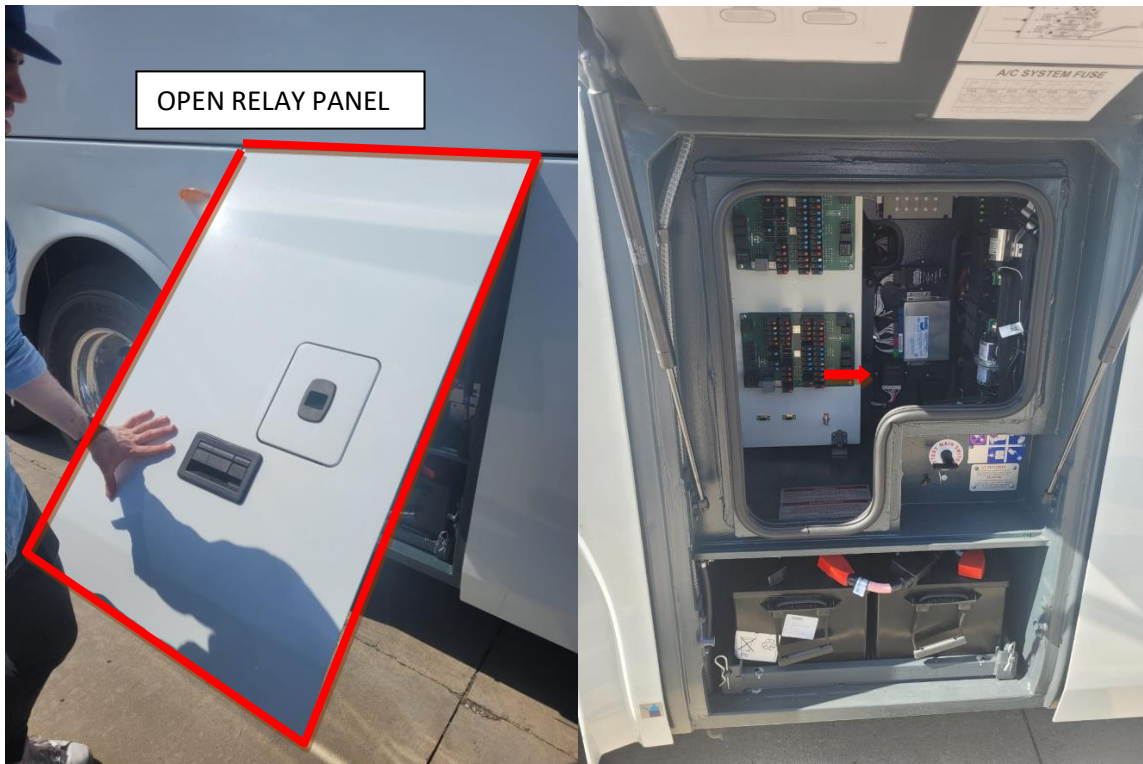
9.

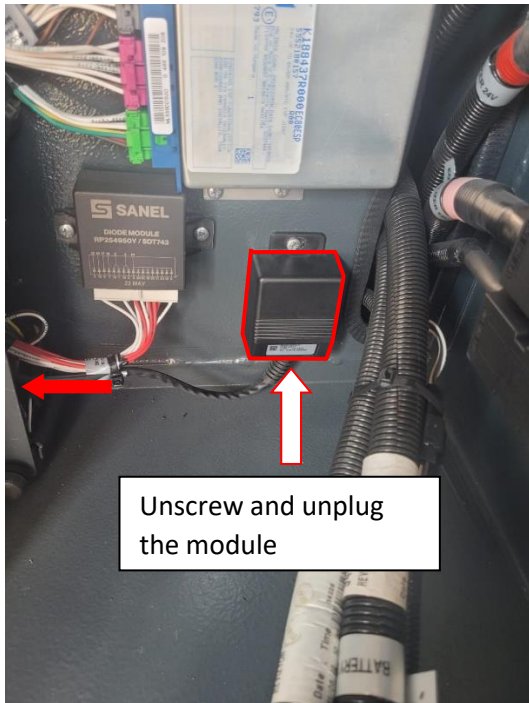


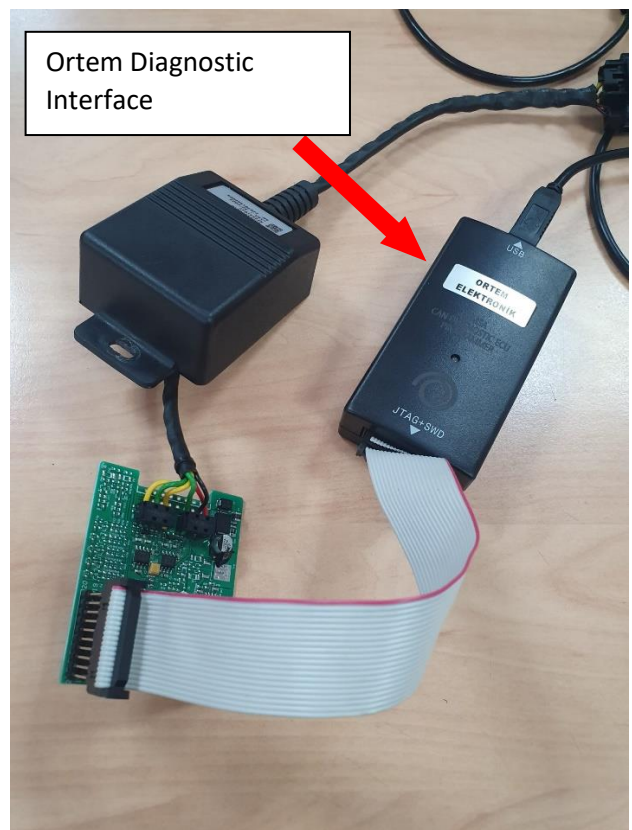
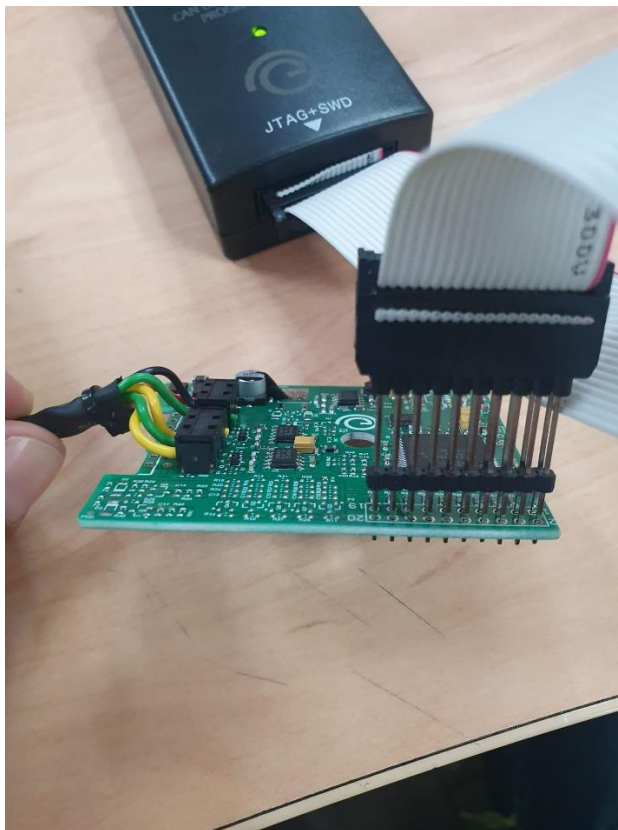
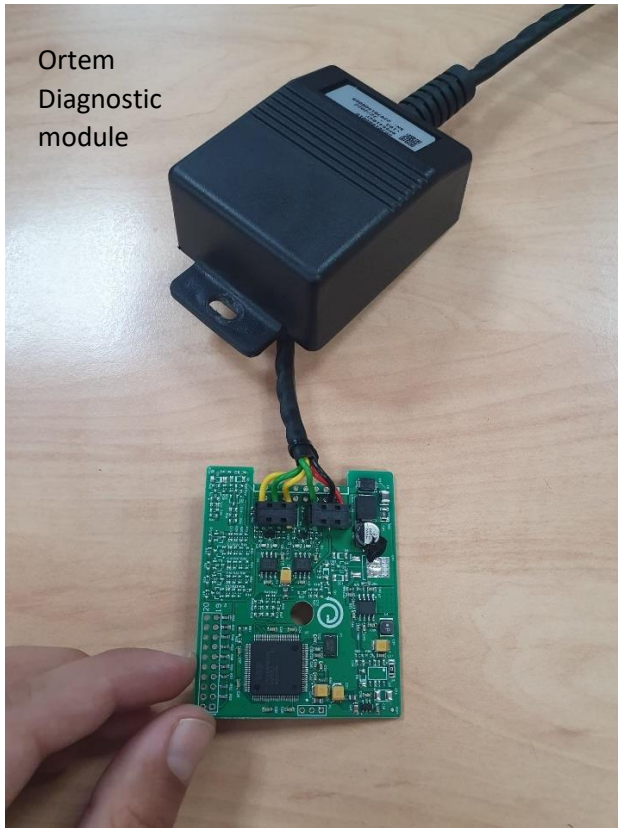
10.

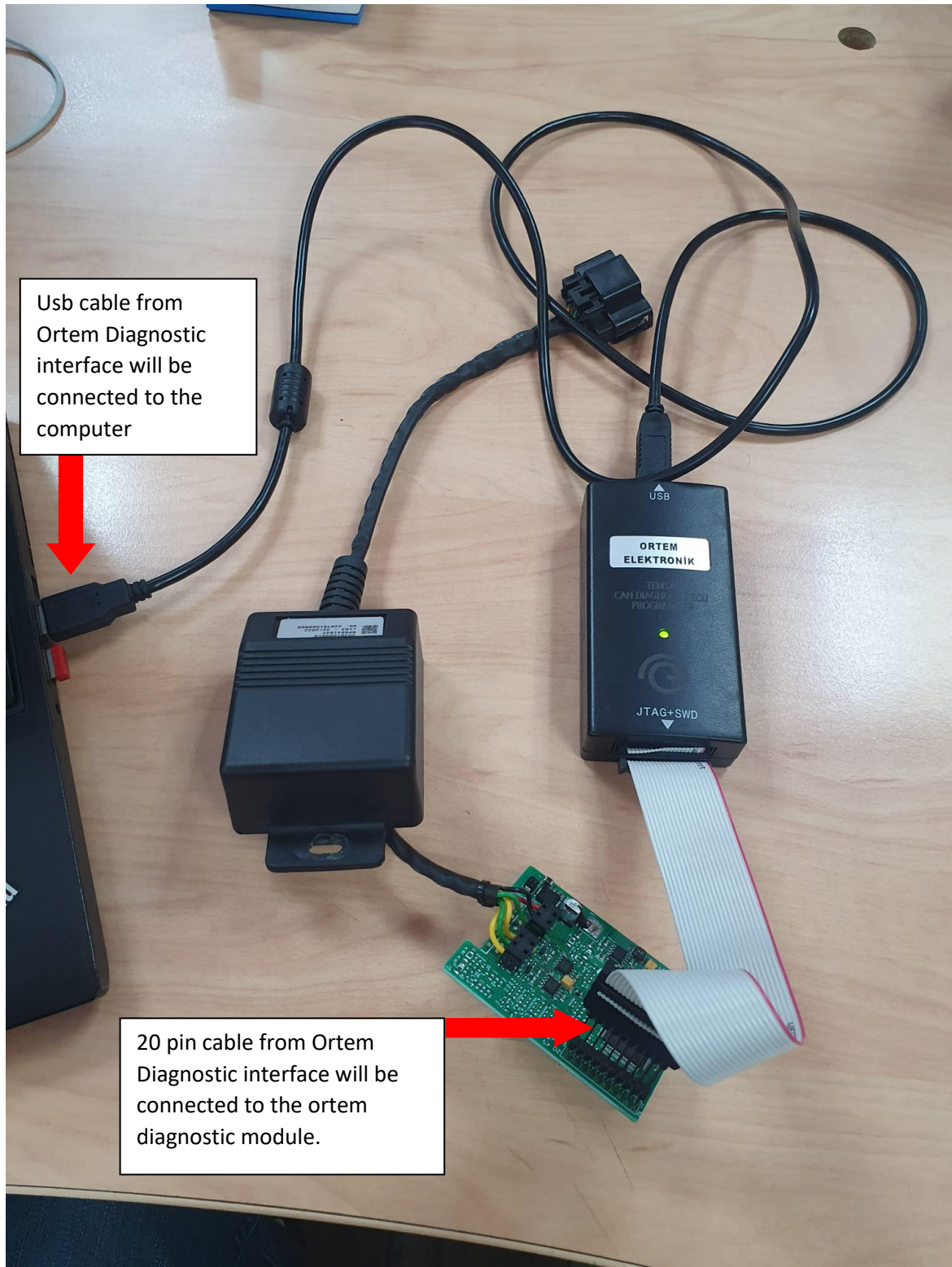


AFTER INSTALLED PROGRAM ON YOUR COMPUTER, YOU SHOULD UPDATE ORTEM DIAGNOSTIC MODULE ACCORDING TO INSTRUCTION BELOW.

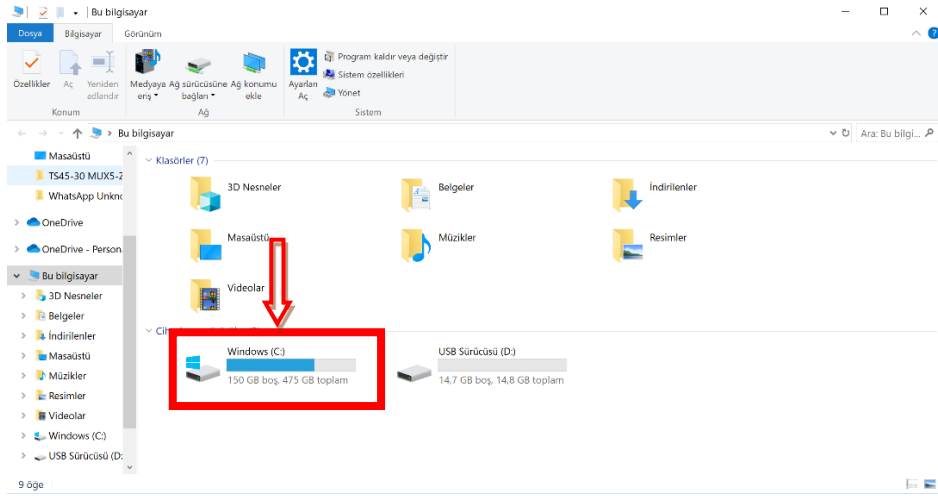




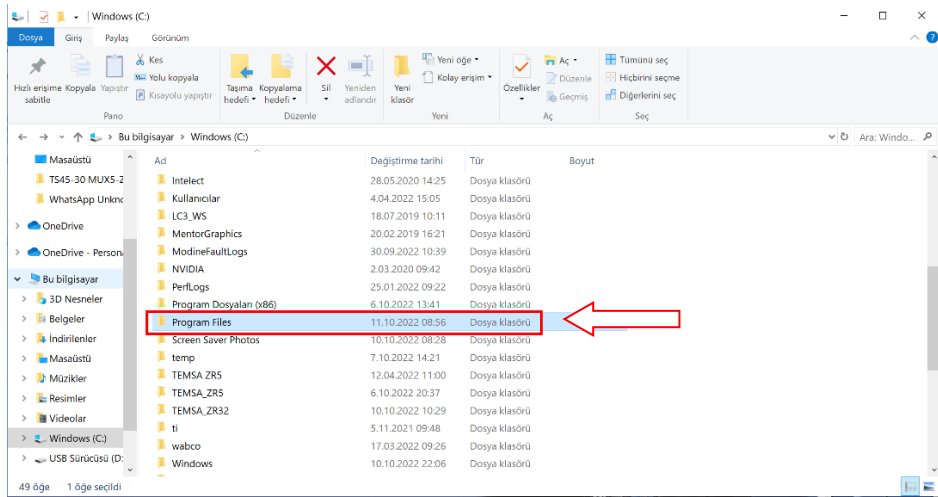




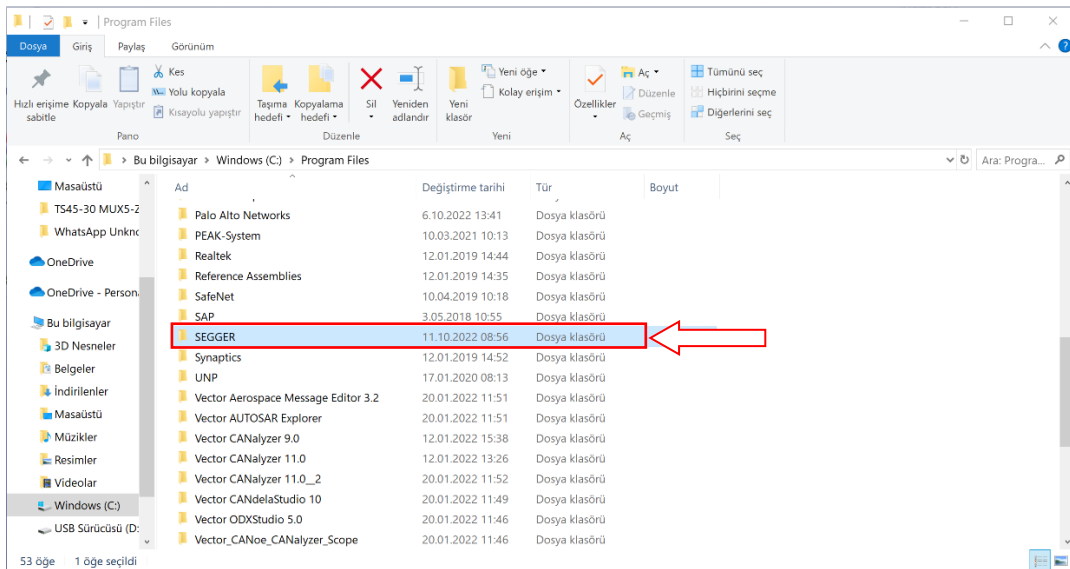
11.



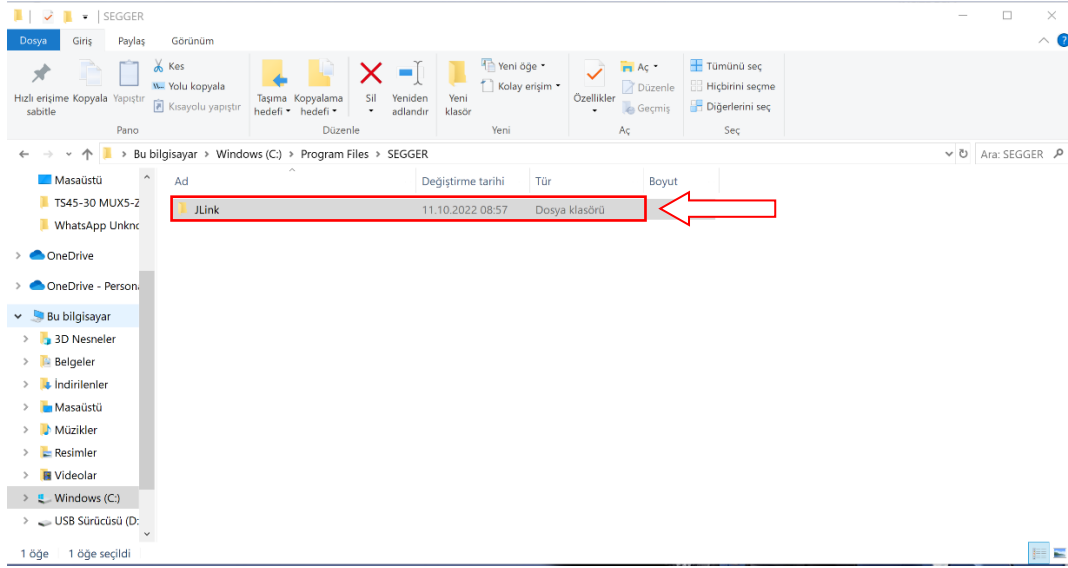
12.



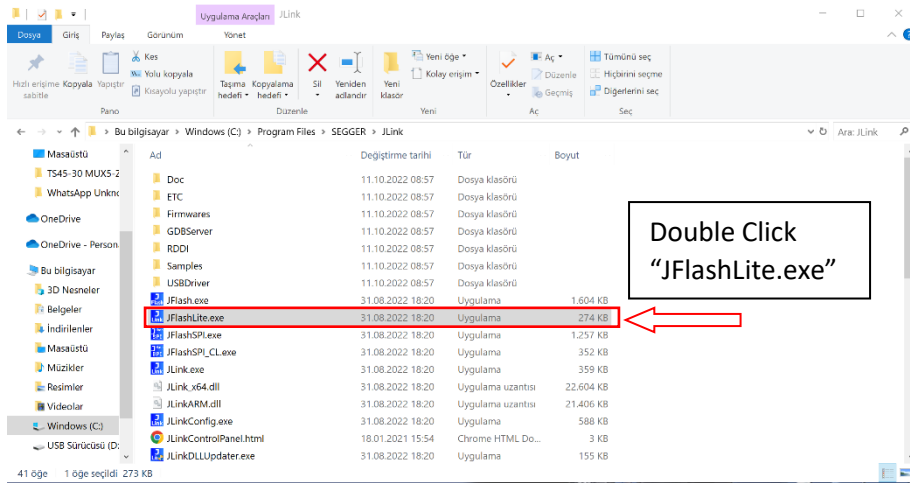
13.



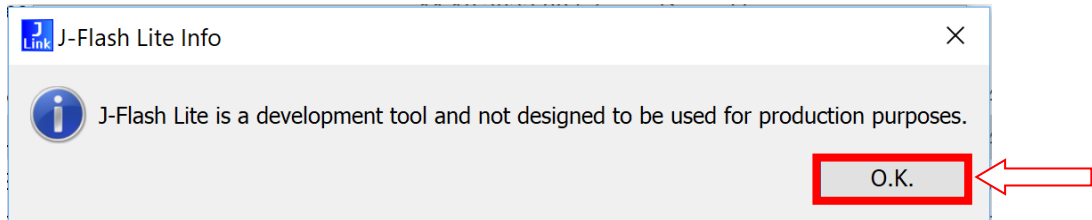
14.



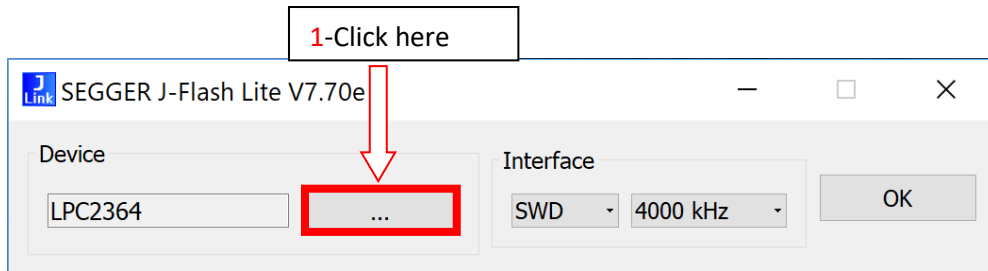
15.

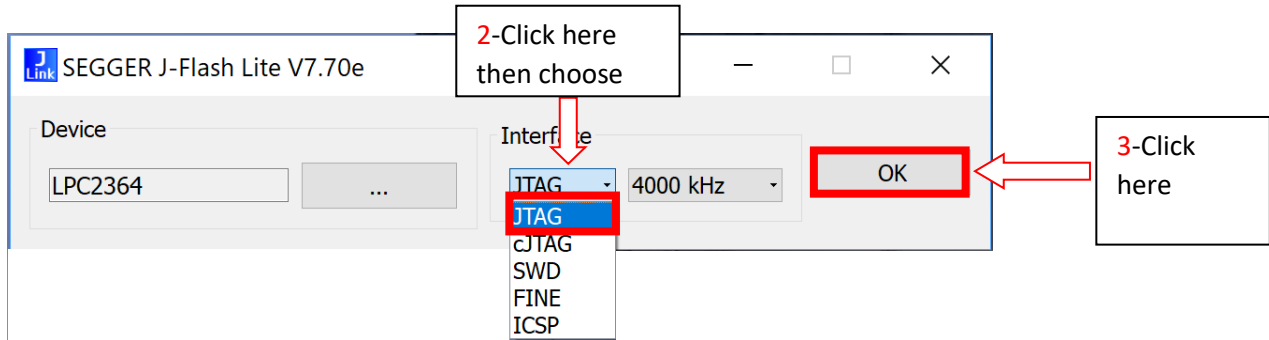


16.

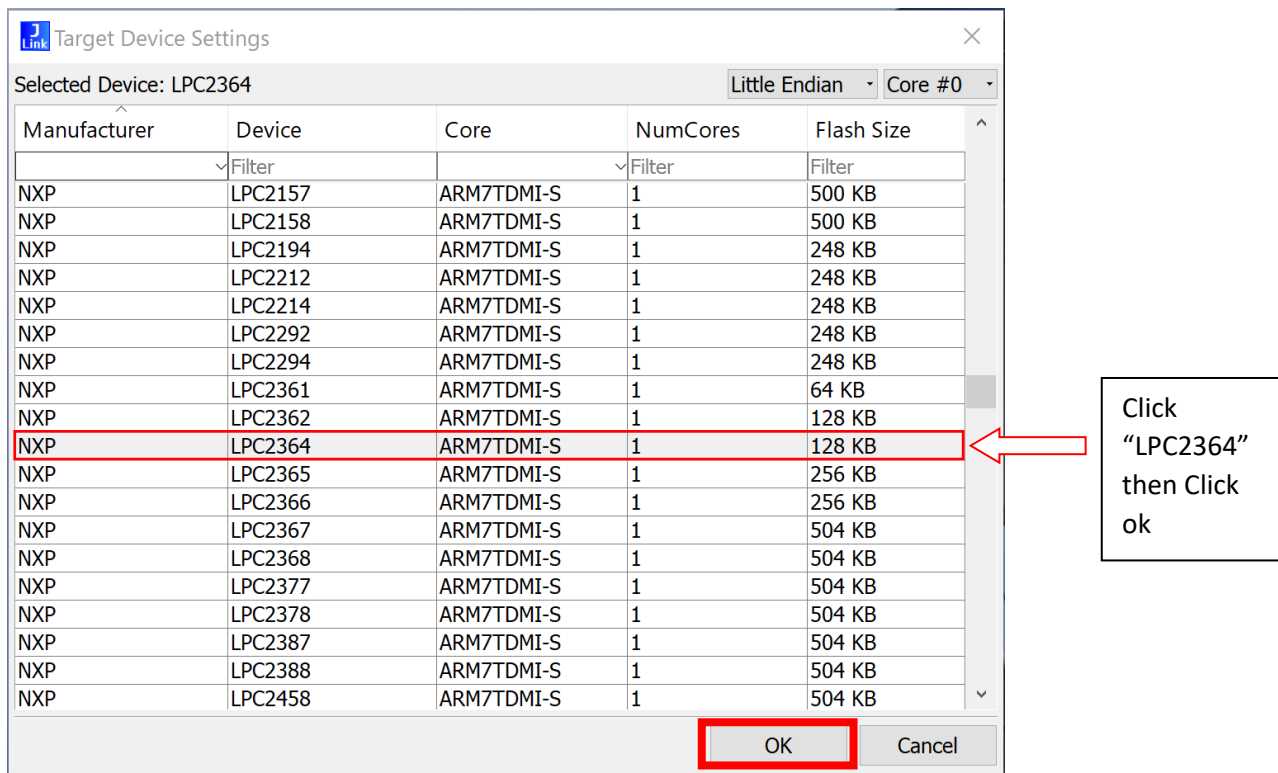


17.

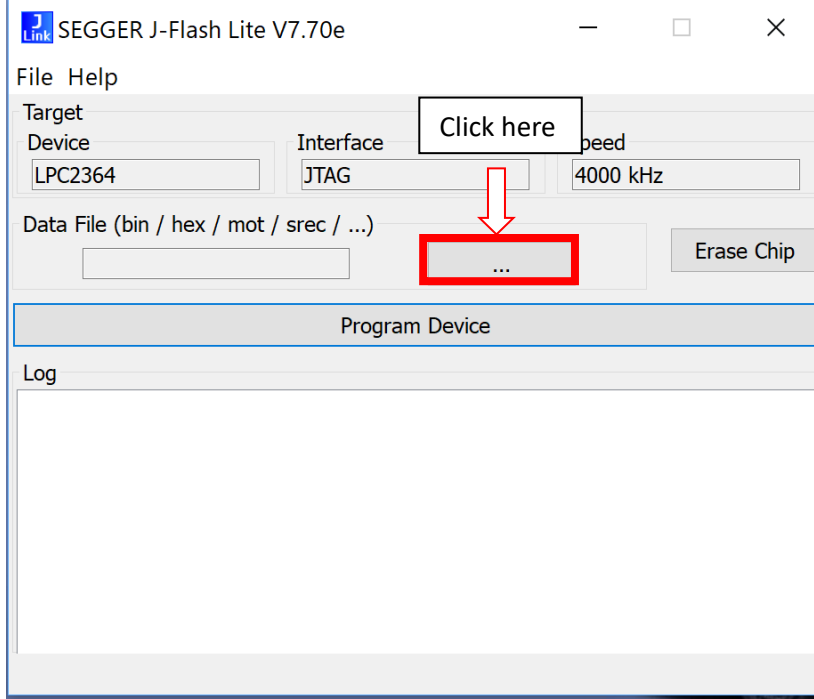




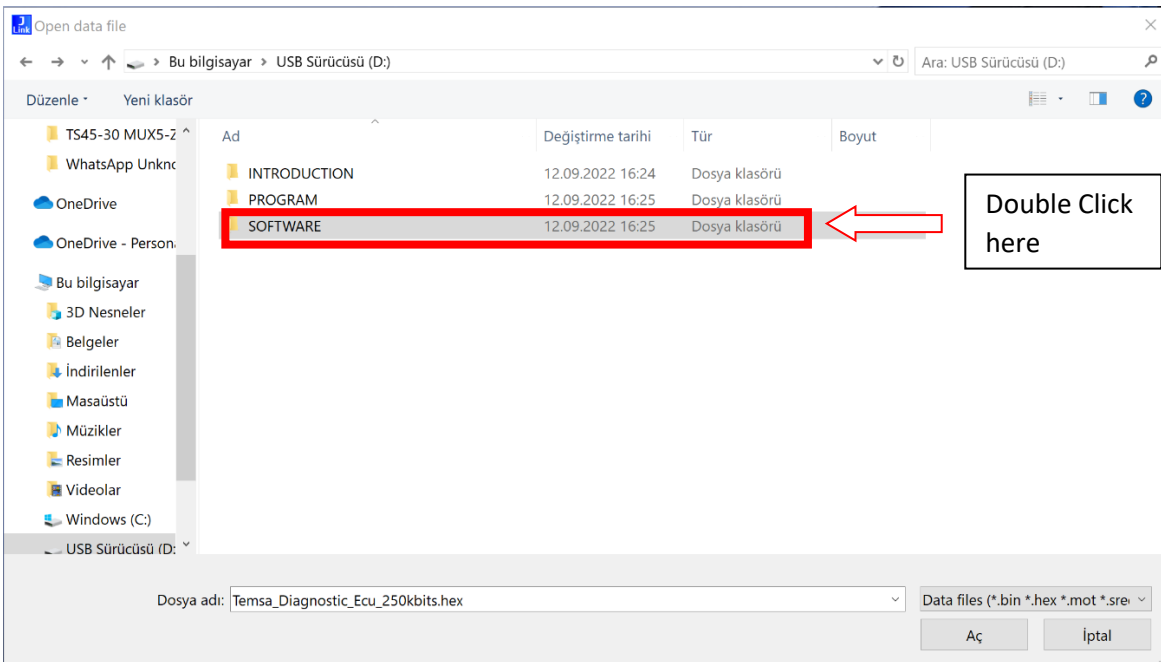
18.



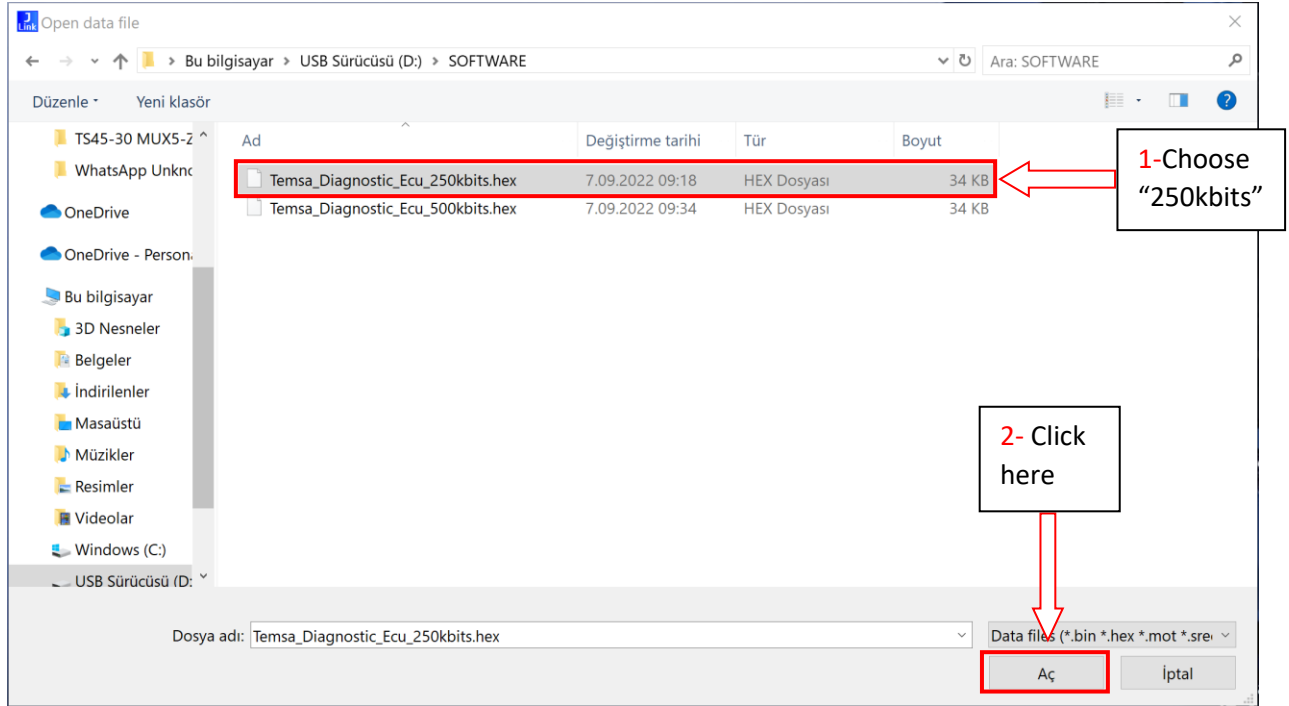
19.



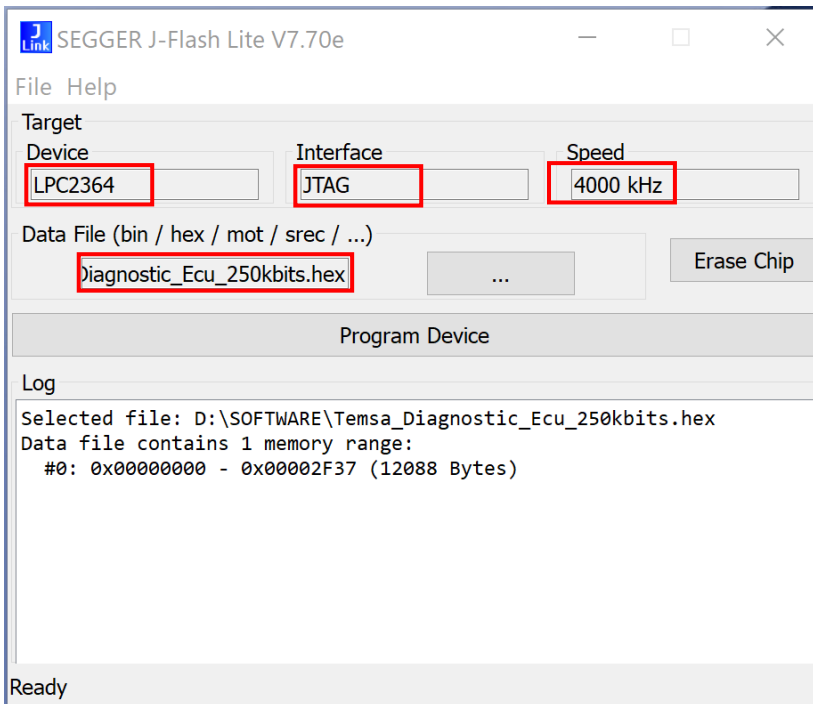
20.



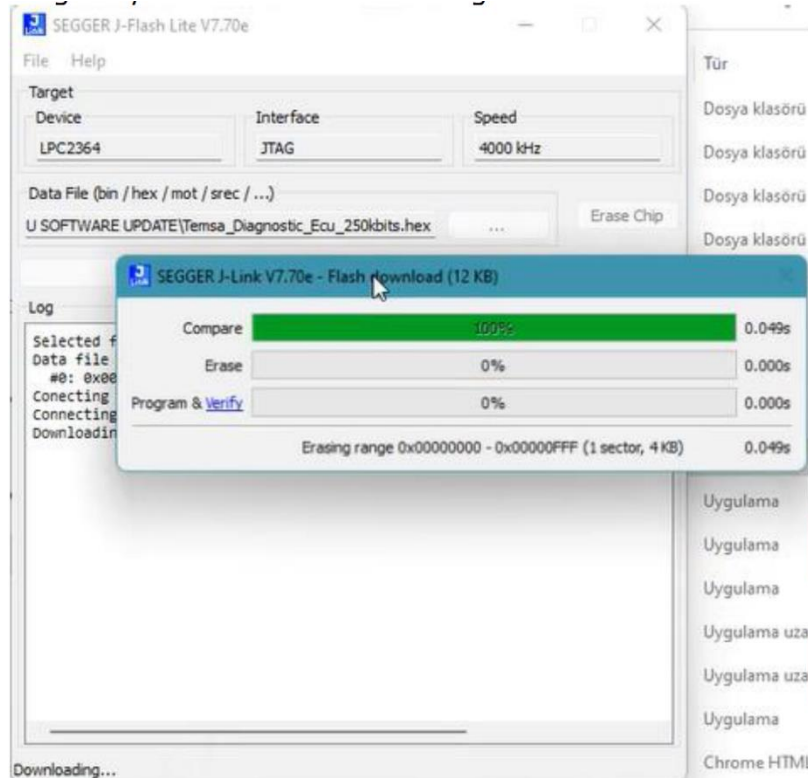
21.



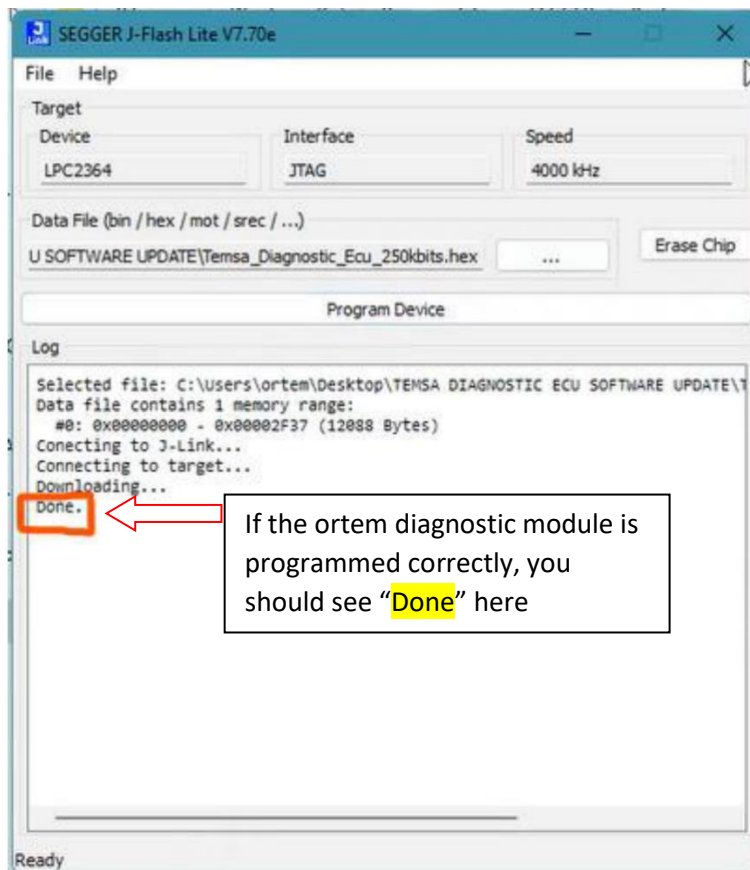
22. You should check all things (in the red boxes) are correct. After that click "Program Device".



23. If everything is correct, you should see picture of below



24.



Vehicle List

Chassis	Otpa	Country	Vehicle
NLTEJXA94M1000329	OA15595	US	TS45
NLTEJXA96N1000334	OA16249	US	TS45
NLTEJXA99N1000330	OA16273	US	TS45
NLTEJXA90N1000331	OA16331	US	TS45
NLTEJXA92N1000332	OA16332	US	TS45
NLTEJXA90P1000333	OA16333	US	TS45
NLTEJXA98N1000335	OA16334	US	TS45
NLTEJXA9XN1000336	OA16335	US	TS45
NLTEJXA91N1000337	OA16336	US	TS45
NLTEJXA9XP1000338	OA16342	CA	TS45
NLTEJXA95N1000339	OA16343	US	TS45
NLTEJXA91N1000340	OA16344	US	TS45
NLTEJXA93N1000341	OA16345	US	TS45
NLTEJXA95N1000342	OA16346	US	TS45
NLTEJXA97N1000343	OA16397	US	TS45
NLTEJXA95P1000344	OA16398	US	TS45
NLTEJXA90N1000345	OA16399	US	TS45
NLTEJXA92N1000346	OA16400	US	TS45
NLTEJXA94N1000347	OA16401	US	TS45
NLTEJXA92P1000348	OA16402	US	TS45
NLTEJXA94P1000349	OA16403	US	TS45
NLTEJXA90P1000350	OA16404	CA	TS45
NLTEJXA92P1000351	OA16485	US	TS45
NLTEJXA94P1000352	OA16486	US	TS45
NLTEJXA96P1000353	OA16487	US	TS45
NLTEJXA93P1000357	OA16507	US	TS45
NLTEJXA95P1000358	OA16508	US	TS45
NLTEJXA97P1000359	OA16509	US	TS45
NLTEJXA9XP1000355	OA16505	US	TS45
NLTEJXA98P1000354	OA16488	US	TS45
NLTEJXA91P1000356	OA16506	US	TS45
NLTEJXA93P1000360	OA16527	US	TS45
NLTEJXA95P1000361	OA16528	US	TS45
NLTEJXA97P1000362	OA16529	US	TS45
NLTEJXA99P1000363	OA16530	US	TS45
NLTEJXA90P1000364	OA16531	US	TS45
NLTEJXA92P1000365	OA16542	US	TS45
NLTEJXA94P1000366	OA16543	US	TS45
NLTEJXA96P1000367	OA16544	US	TS45
NLTEJXA98P1000368	OA16555	US	TS45
NLTEJXA9XP1000369	OA16556	US	TS45



TEMSA

SERVICE BULLETIN

NLTEJXA96P1000370	OA16557	US	TS45
NLTEJXA98P1000371	OA16641	US	TS45
NLTEJXA9XP1000372	OA16642	US	TS45
NLTEJXA91P1000373	OA16643	US	TS45
NLTEJXA93P1000374	OA16644	US	TS45
NLTEJXA95P1000375	OA16645	US	TS45
NLTEJXA97P1000376	OA16646	US	TS45
NLTEJXA99P1000377	OA16647	US	TS45
NLTEJXA90P1000378	OA16727	US	TS45
NLTEJXA92P1000379	OA16728	US	TS45
NLTEJXA99P1000380	OA16736	US	TS45
NLTEJXA90P1000381	OA16737	US	TS45
NLTEJXA92P1000382	OA16745	US	TS45
NLTEJXA94P1000383	OA16783	US	TS45
NLTEJXA96P1000384	OA16784	US	TS45
NLTEJXA98P1000385	OA16785	US	TS45
NLTEJXA9XP1000386	OA16786	US	TS45
NLTEJXA91P1000387	OA16790	US	TS45
NLTEJXA93P1000388	OA16880	US	TS45
NLTEJXA95P1000389	OA16881	US	TS45
NLTEJXA91P1000390	OA16882	US	TS45
NLTEJXA93P1000391	OA16898	US	TS45
NLTEJXA95P1000392	OA16899	US	TS45
NLTEJXA97P1000393	OA16900	US	TS45

LABOR BREAKDOWN

Application	Time
Uploading the up-to-date Multiviu program.	45
Uploading the up-to-date Ortem Diagnostic Module.	45
Total Labor Time	90