



SERVICE BULLETIN

Subject: General Software Improvement Bulletin Bulletin Type: Field Fix Conditional

Bulletin No: TS30-FC-2210

PQR No:500000007084

Rev No: 00

Ref. No:700004150

Vehicle Model: TS30

Flat Rate Time / Code:90 min

Date of issue: 18.10.2022

Modify Before: 18.10.2023

What to do with off coming parts:

- Scrap
- Return
- Use with additional parts
- On consignment
- No off coming parts

What to do with outstanding parts of previous revision:

- Scrap
- Return
- Use with additional parts
- On consignment
- No outstanding parts

Description of the modification:

The purpose of the bulletin is to ensure the improvement of DTC codes.

Bulletin Responsible: Abdulsamed ÇİFTÇİOĞLU

Published & Approved By: Gokhan Avcilar

SAFETY INSTRUCTIONS

1. Mechanical Requested Dress Code



WARNING:

- Dress properly to avoid personal injury and damage to the vehicle

- ✓ Always wear protective clothing
- ✓ Do not wear any worn or loose-fitting clothing
- ✓ Remove jewelry before starting to work
- ✓ In case of long hair, use hairnet
- ✓ The illustration on the left shows some of the correct and incorrect clothing
- ✓ Sharp edged items should be avoided in order not to scratch vehicle (i.e. belts, watches, necklace)

2. Protect Seats when Mechanic Starts Working



- ✓ Seats, trimming, upholstery stuff and carpeting should be protected with appropriate coverings.

3. Welding on the Chassis

- Always disconnect the batteries (starting with the negative lead).
- Disconnect the connectors of electrical and electronic equipment (electronic control units, sensors and actuators) if they are less than 2 meters away from the chassis part to be welded or the earth terminal of the welding equipment.
- The earth terminal should never be attached to vehicle components such as engine, axles and springs. Arcing on these parts is not permitted, because of the risk of damage to bearings, springs, etc.
- The earth terminal must make good contact and be placed as close as possible to the part to be welded.
- Plastic pipes, rubber parts and parabolic springs should be well protected against welding spatter and temperatures higher than 70°.
- The contact switch must not be in the accessory or contact position. The contact key should be removed.
- Reconnect in reversed order of disconnecting. Ensure that a good earth connection is made between chassis, engine and cab.

INCLUDED PARTS LIST

	Part No	Part Name	Picture	Qty	Unit of Measure

The program Link

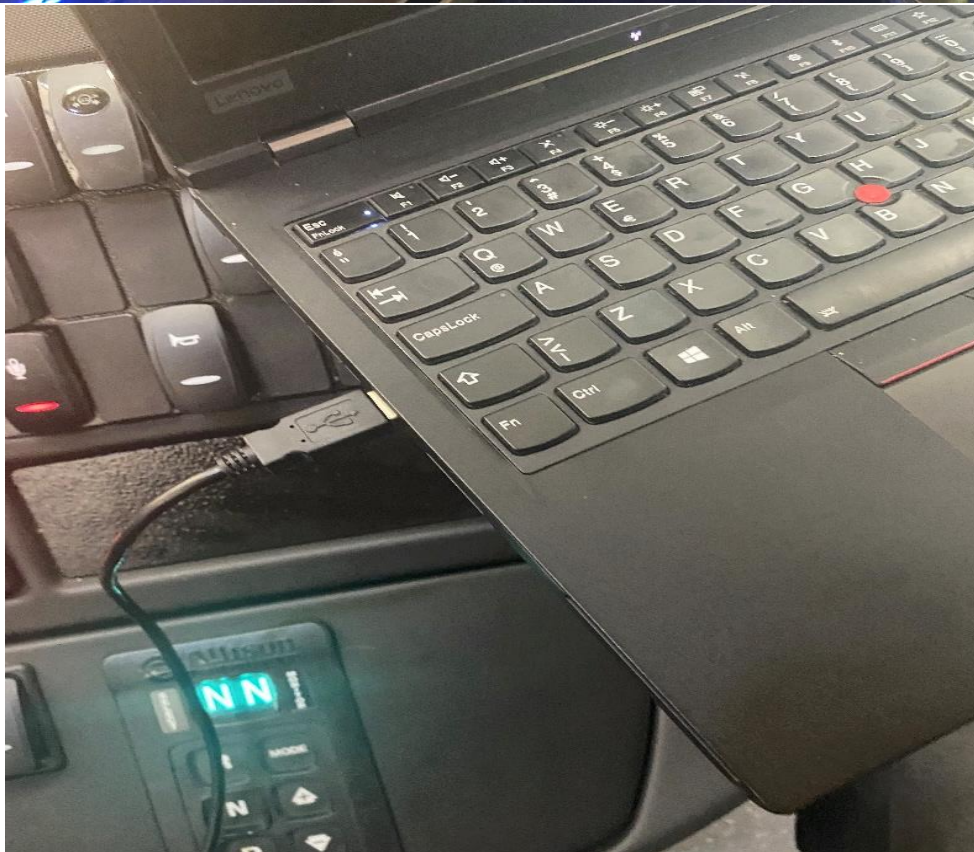
Multiviu :

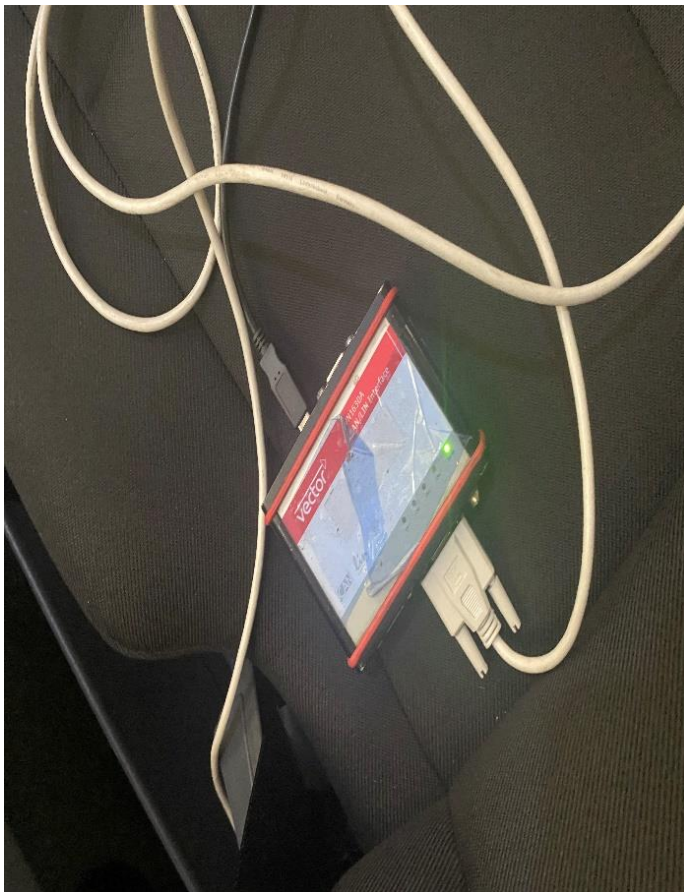
****TS00-MV-020 software should be installed on vehicles with software starting with TS00-MV-...**

https://content.temsa.com/ContentServer/ContentServer.dll?get&pVersion=0045&contRep=ZADNSPEKTE P07101&docId=90E2BA0455251EDD928EDDC8B8CEDF56&accessMode=r&compId=TS00_MV_020.L2P.zip

Uploading the up to date program (Multiviu):

- 1- Park the vehicle to an area which is proper to work.





Uploading the up to date program (Multiviu):

2-Connect your computer to the vehicle by using the CANalyzer interface. Plug the USB part into your computer and connect your CAN cable to the 9 pinned OBD port with the **D** pin low and the **C** pin high.



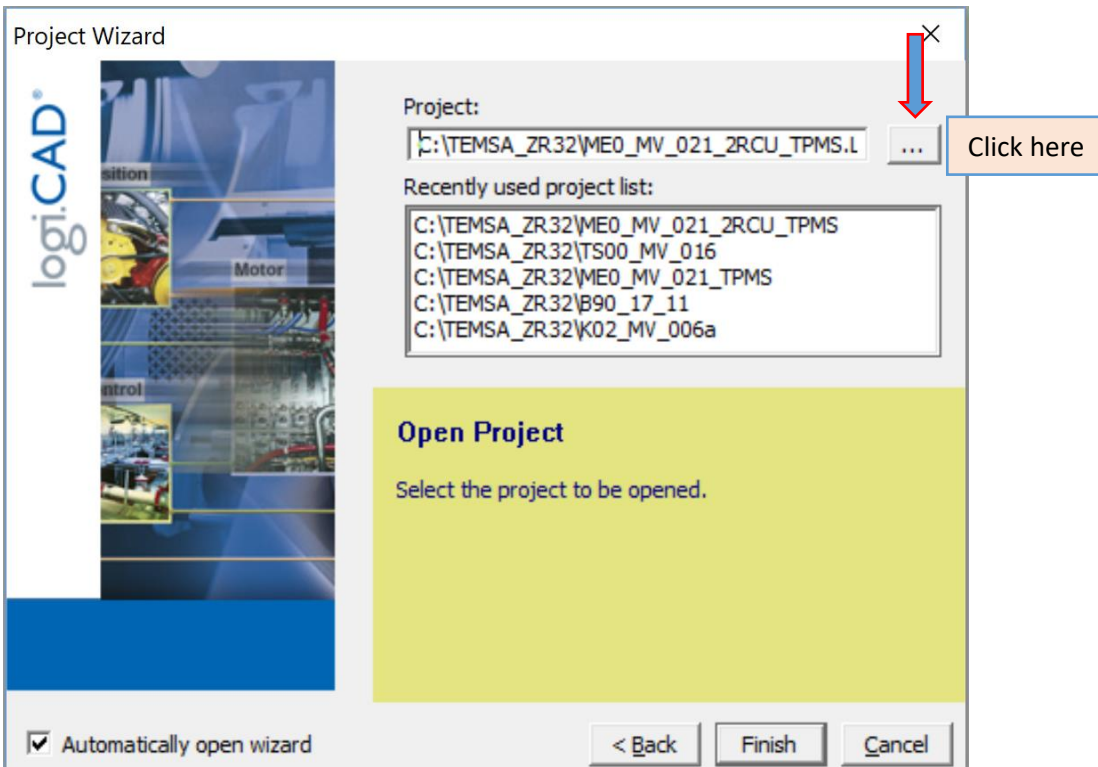
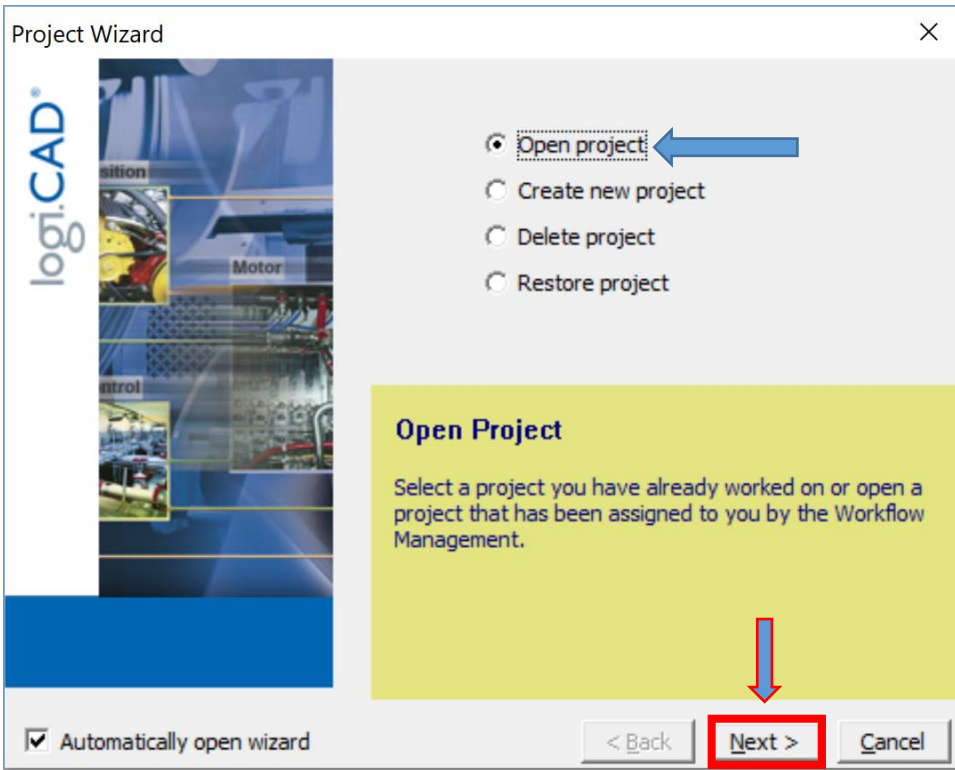


3- Turn the ignition switch on. Do not start the engine.

4- Make sure that the KIBES dongle is inserted to your computer.

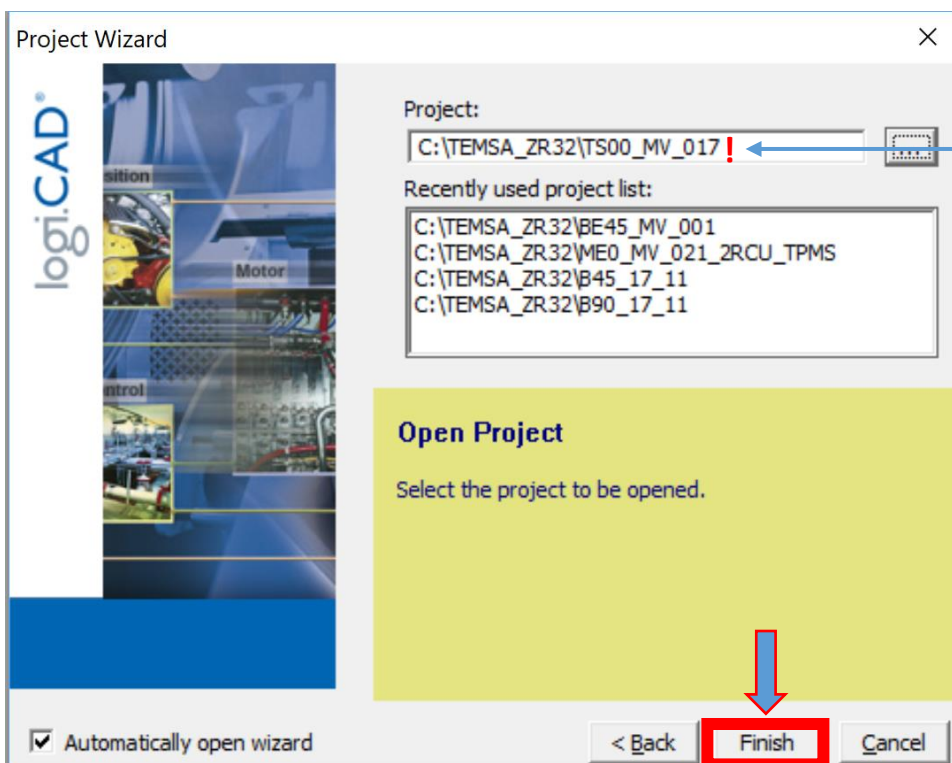
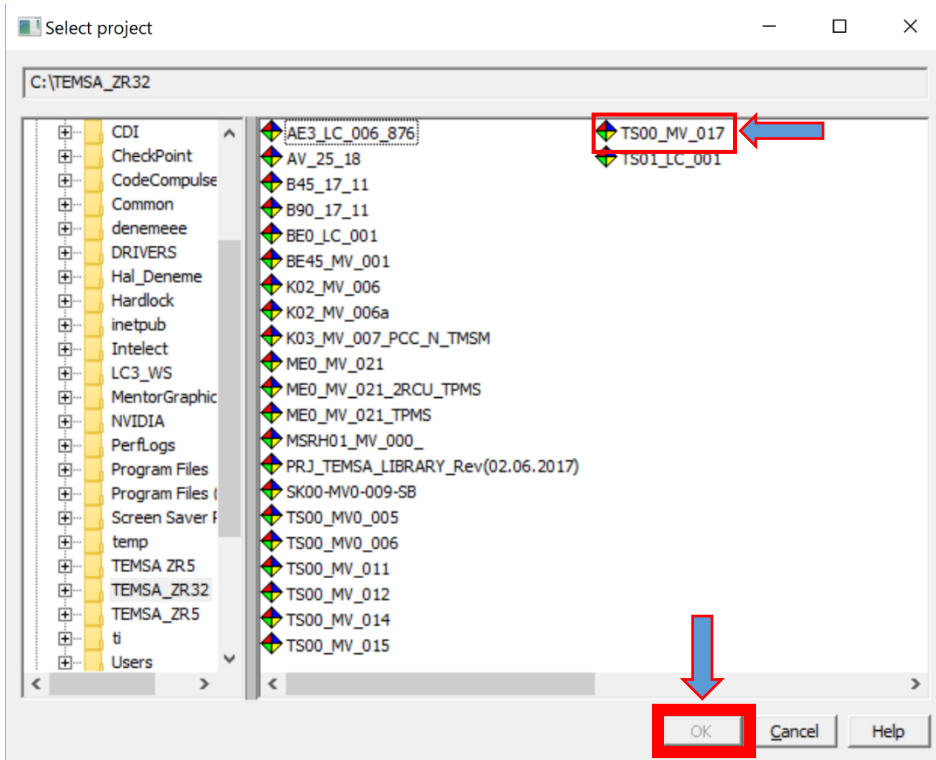


5- Select the "Open Project" selection and click "next".



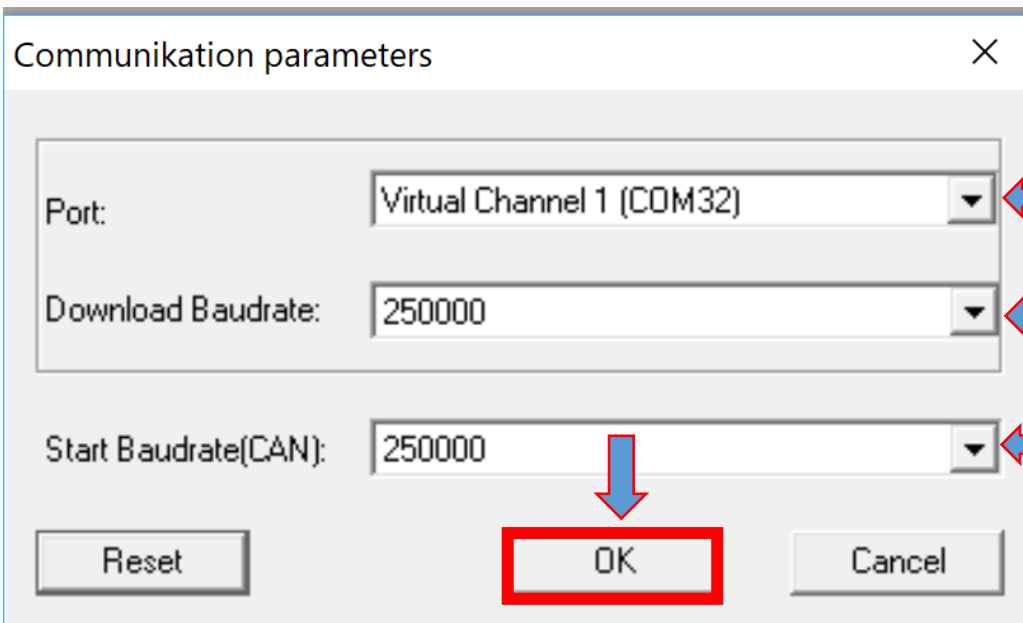
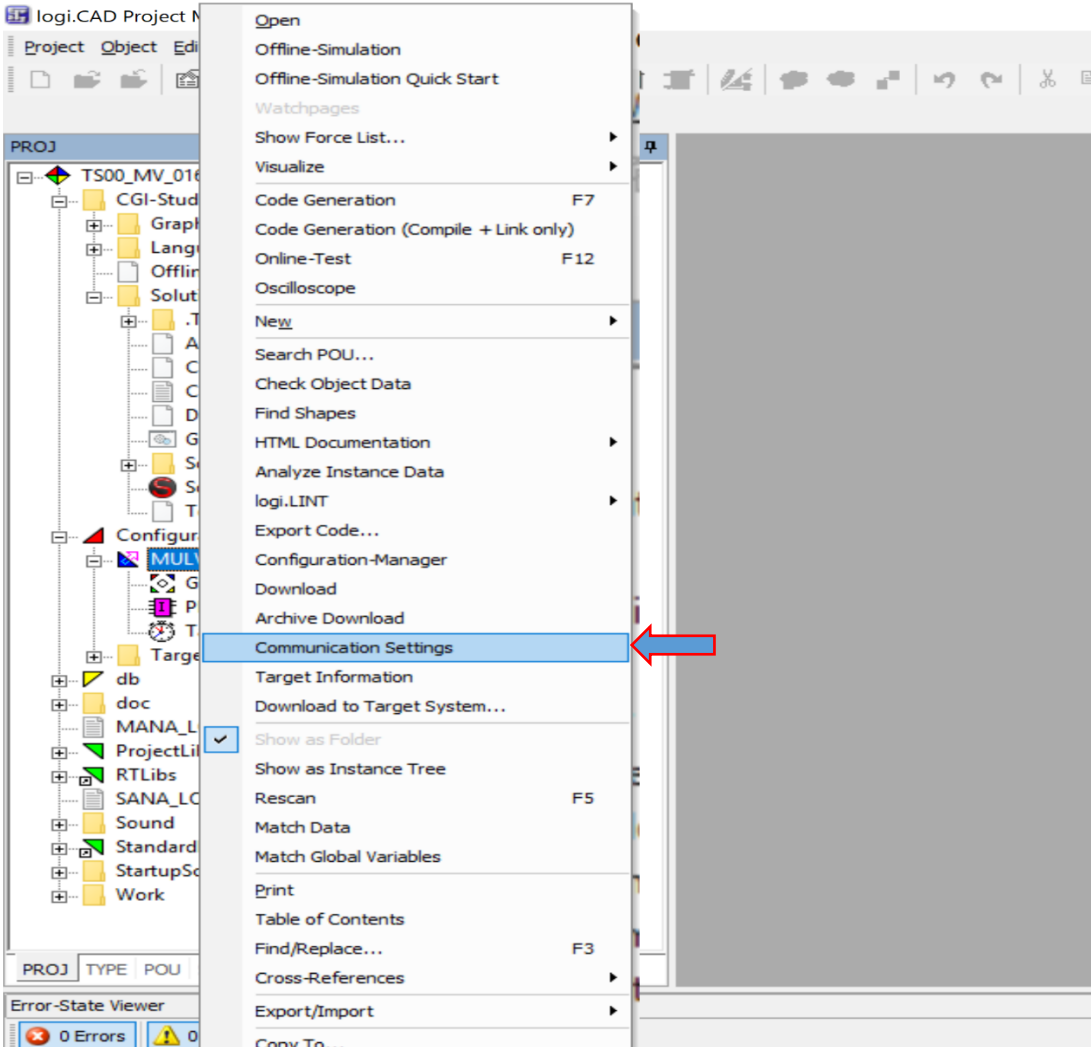
2- Select **TS00_MV_020**. Then click “ok” after that click “Finish”.

Hint: The software version must be selected correctly. The number shown in the picture may be representative.



Make sure you choose the right program.

7-Right click on Mulviu then click “Communication Settings” check the Port and Baudrate.

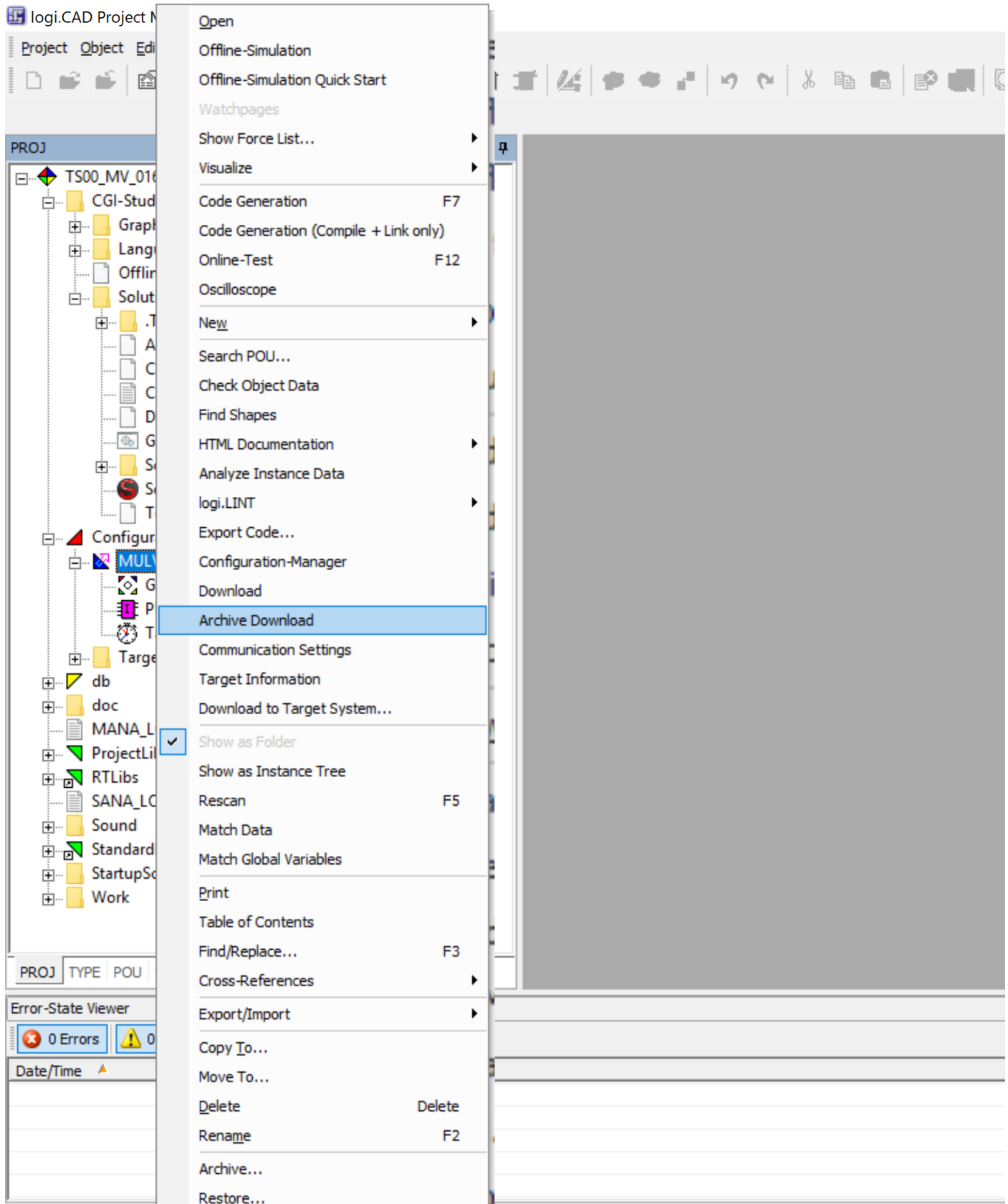


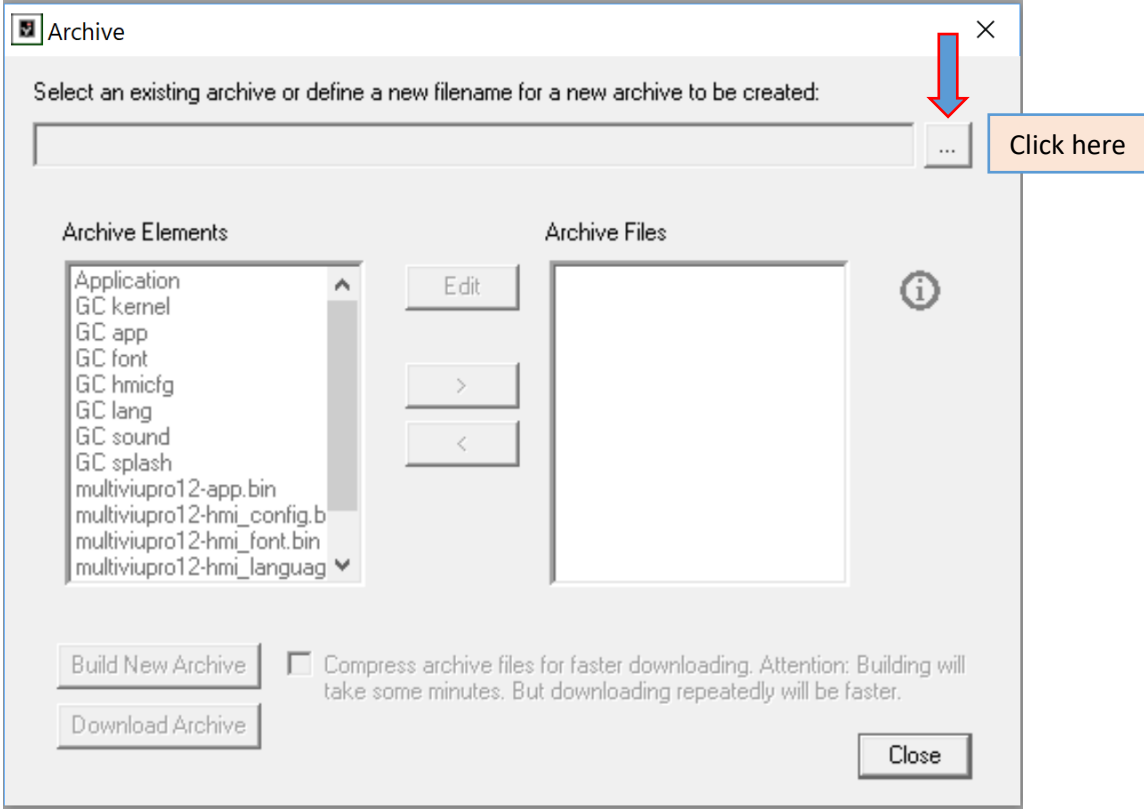
You can change port here. Please make sure correct port.

You can change “Download Baudrate” here

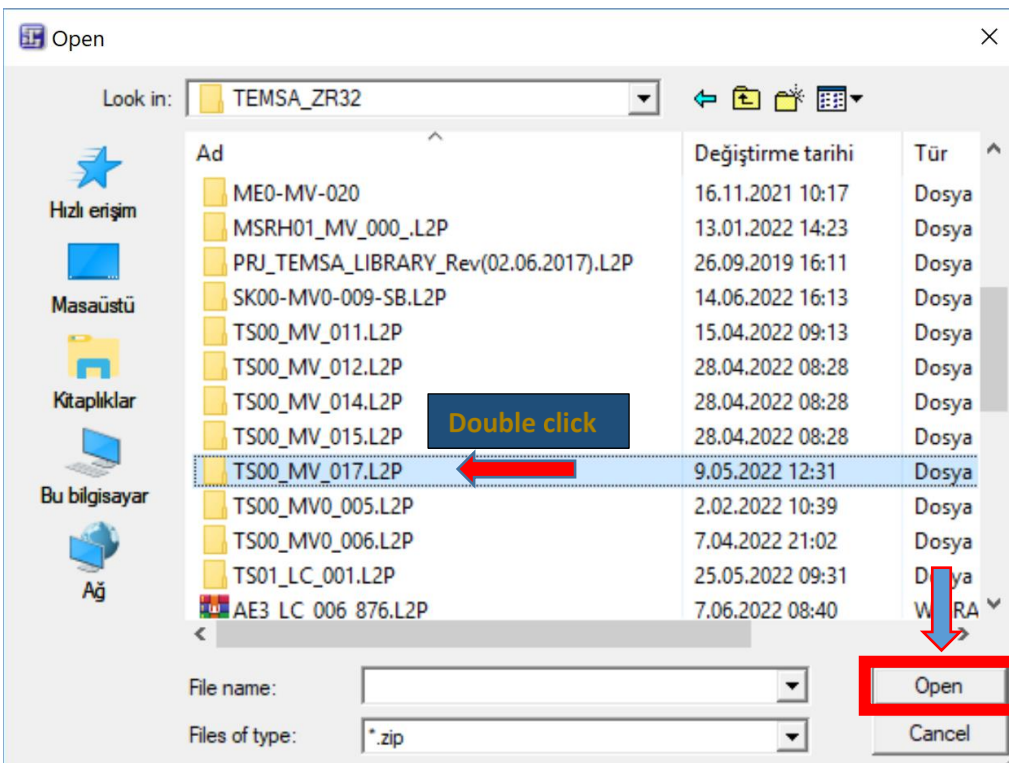
You can change “Start Baudrate” here

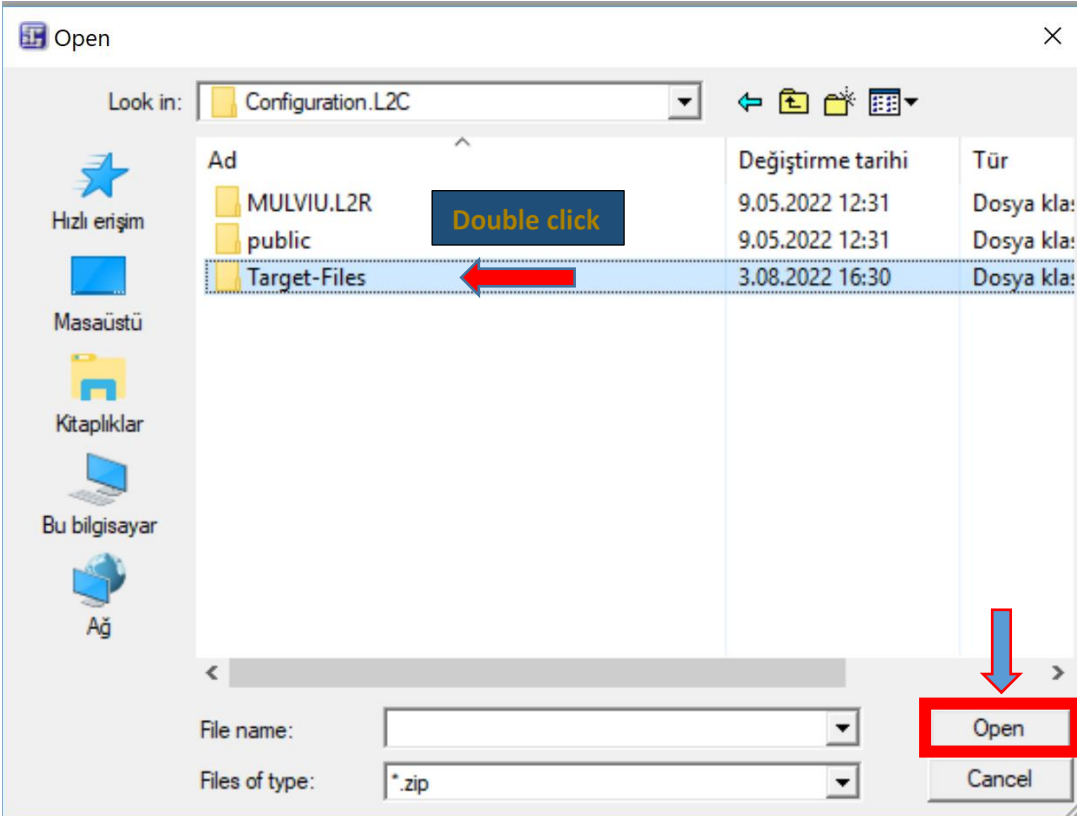
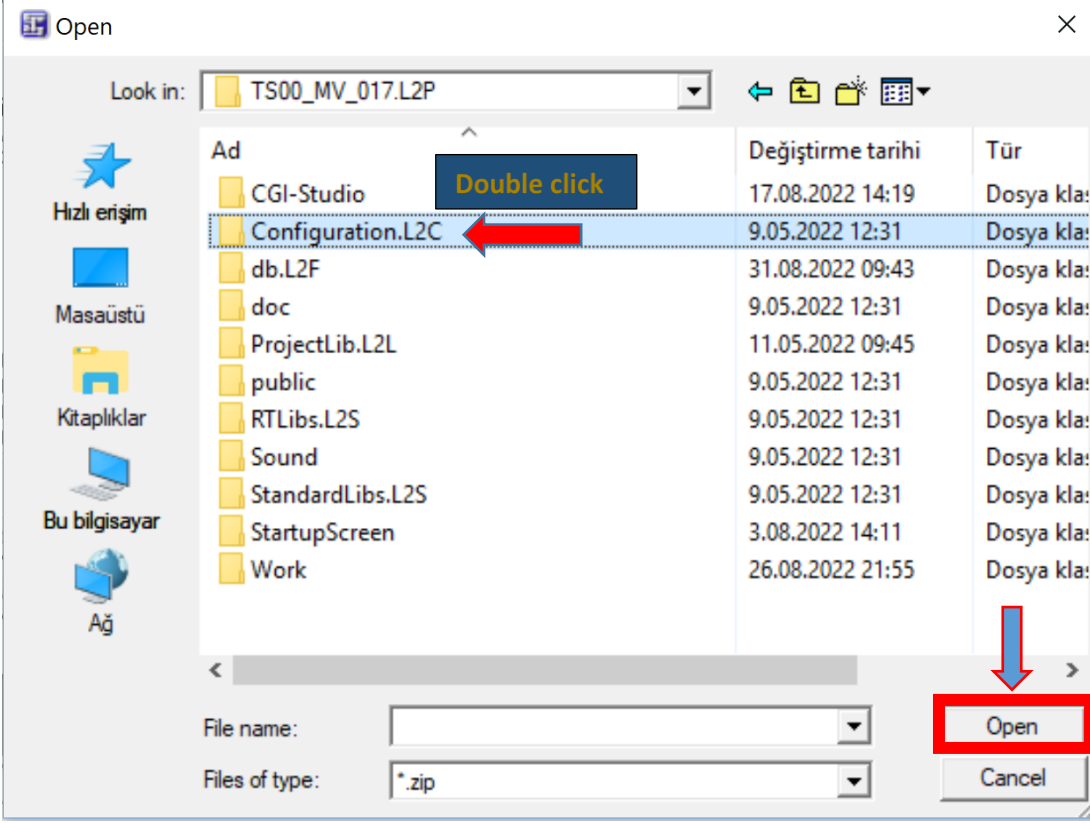
8-Right click on Mulviu again then click “Archive Download”



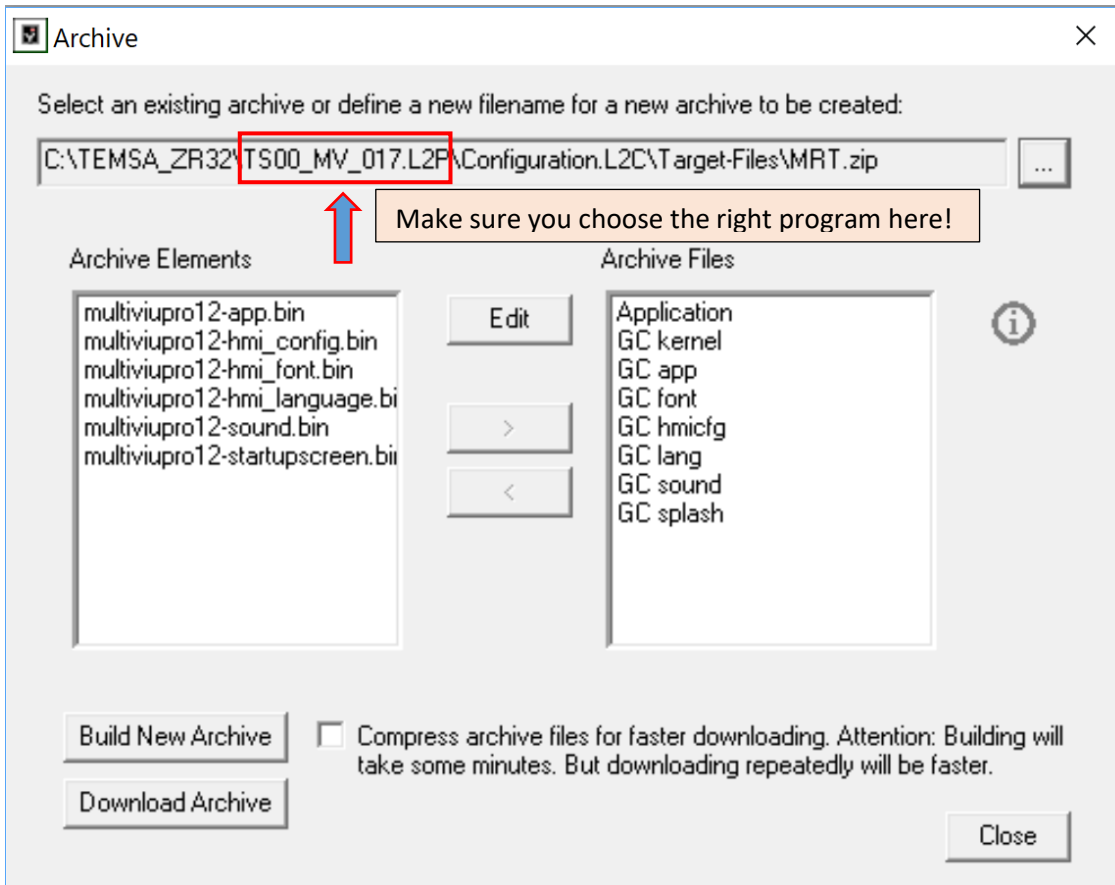
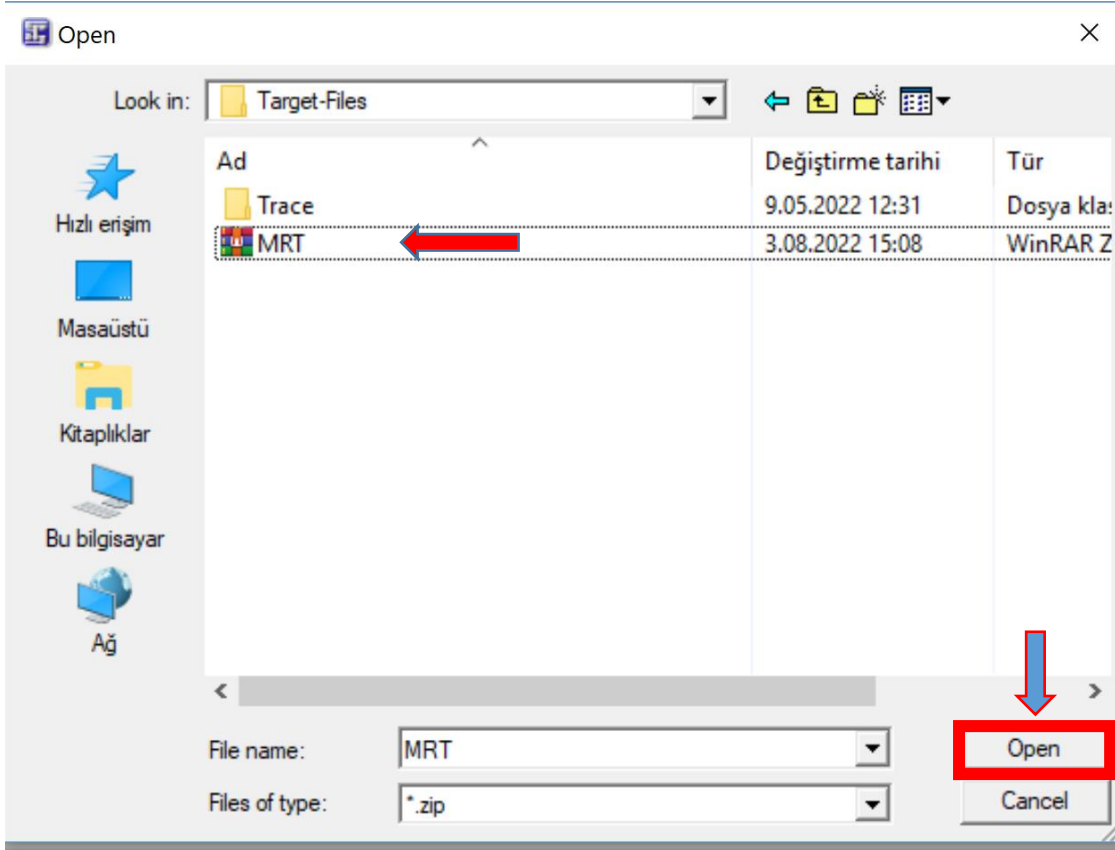


9- You should find program in your workspace then double click the program.





10- Click on “MRT” then click “Open”.



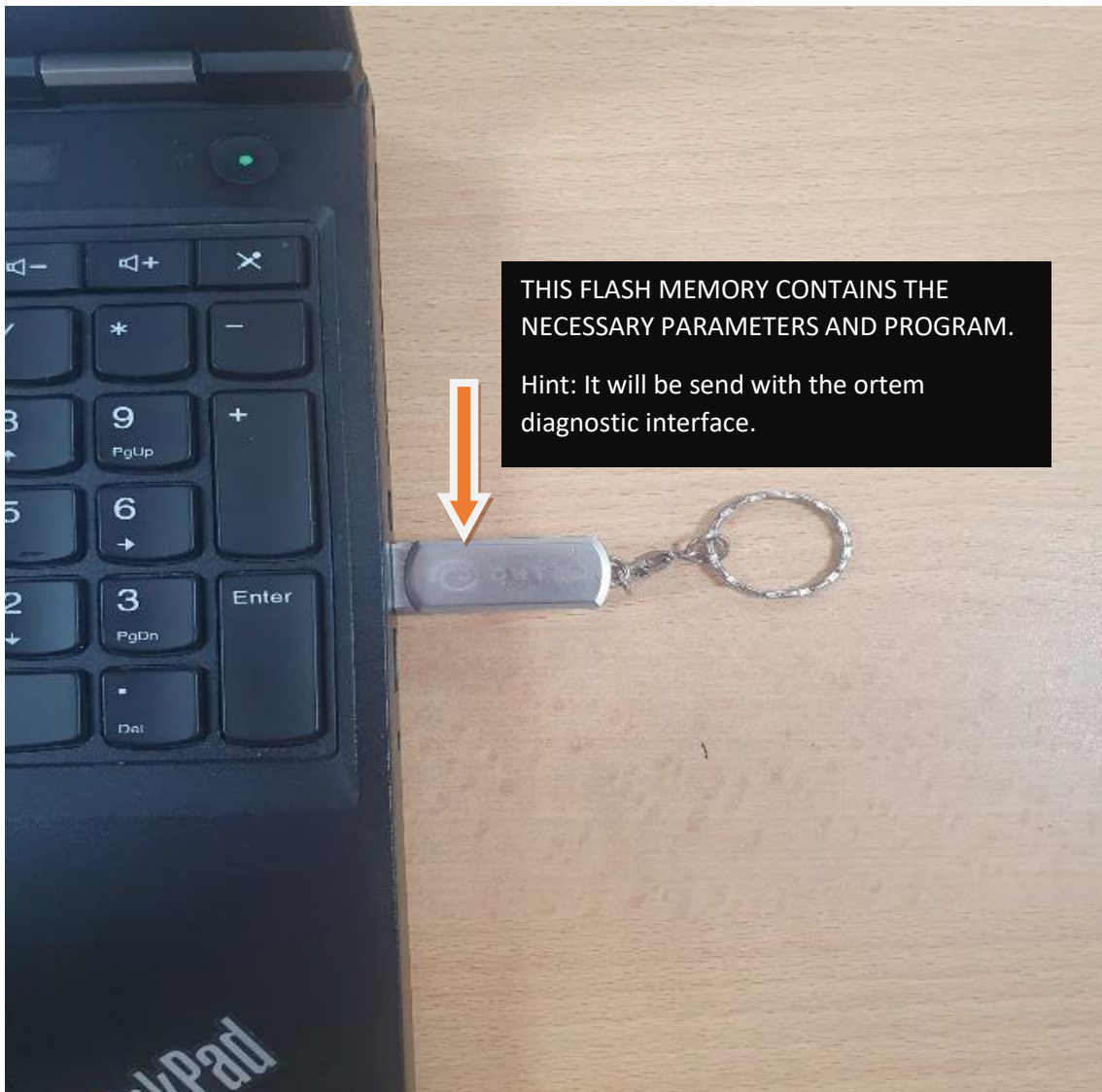
11- After the software is checked, click the “Build New Archive”, then click the “Archive Download” .

12-When a warning occurs, click OK, then wait for the program to be downloaded. Do not cut the power off during the download process, this could cause the body controller to dysfunction.

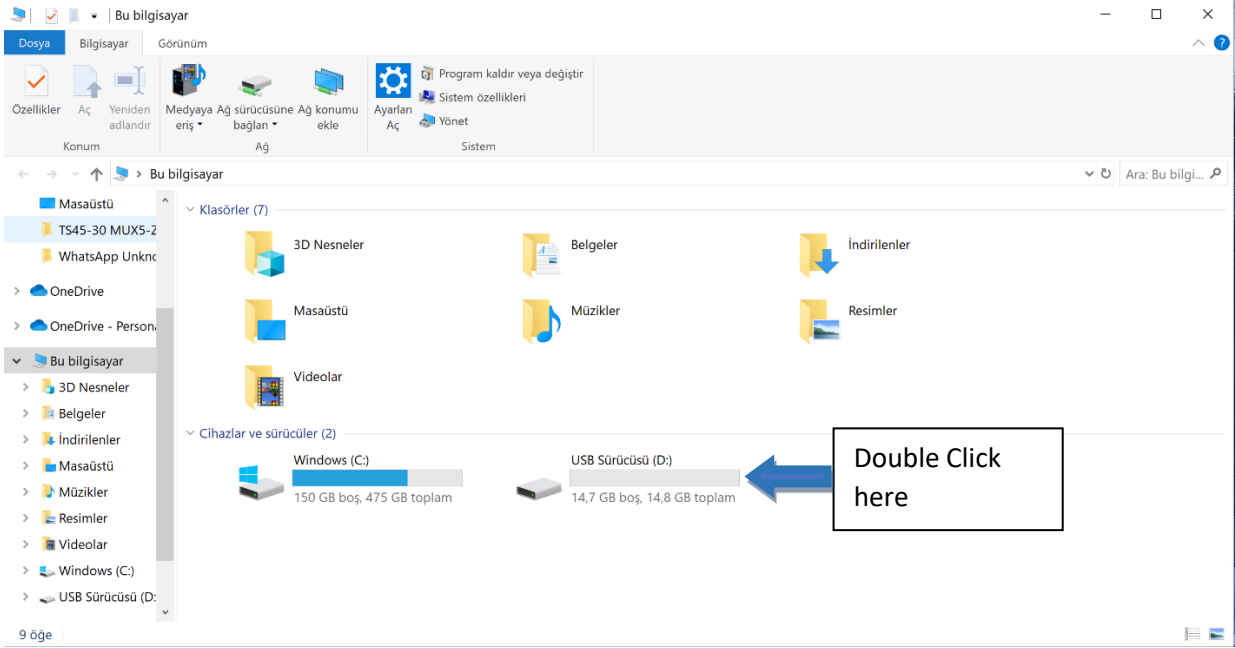
AFTER UPDATING THE SOFTWARE TS00-MV-020 , YOU SHOULD UPDATE ORTEM DIAGNOSTIC MODULE ACCORDING TO THE INSTRUCTION BELOW;

FIRST OFF ALL YOU HAVE TO INSTALL PROGRAM ON YOUR COMPUTER.

1.



2.



3. Double click "PROGRAM"

Ad	Değiştirme tarihi	Tür	Boyut
INTRODUCTION	12.09.2022 16:24	Dosya klasörü	
PROGRAM	12.09.2022 16:25	Dosya klasörü	
SOFTWARE	12.09.2022 16:25	Dosya klasörü	

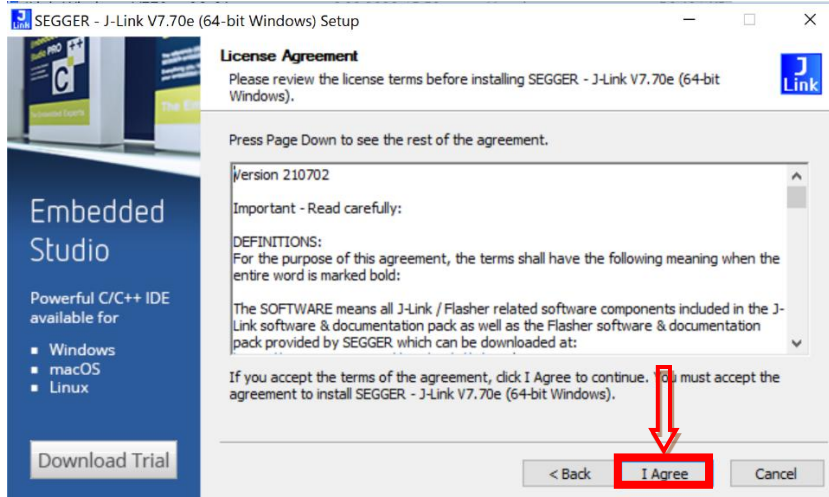
4. Double click "JLink_Windows_V770e_x86_64.exe"

Ad	Değiştirme tarihi	Tür	Boyut
JLink_Windows_V770e_x86_64.exe	6.09.2022 15:52	Uygulama	56.481 KB

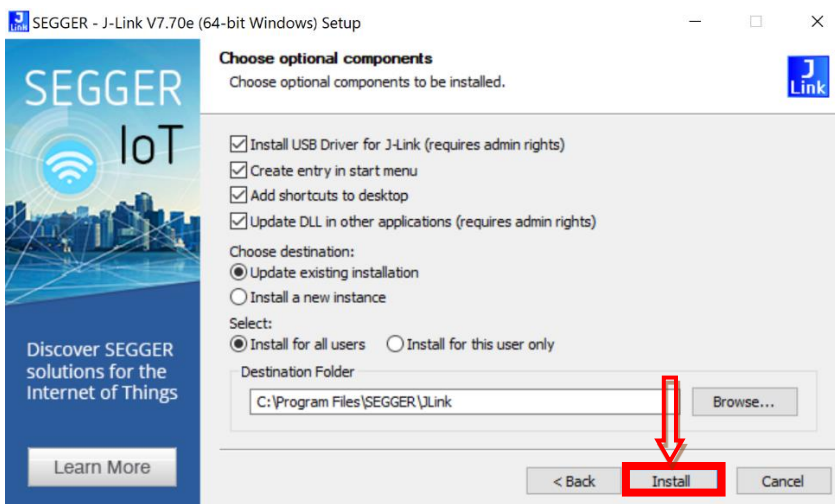
5.



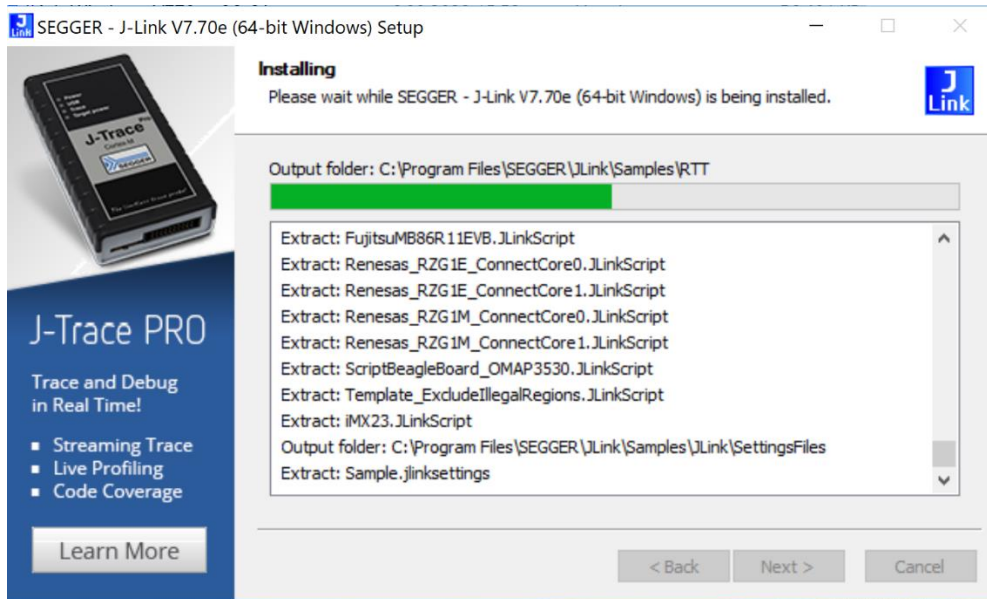
6.



7.



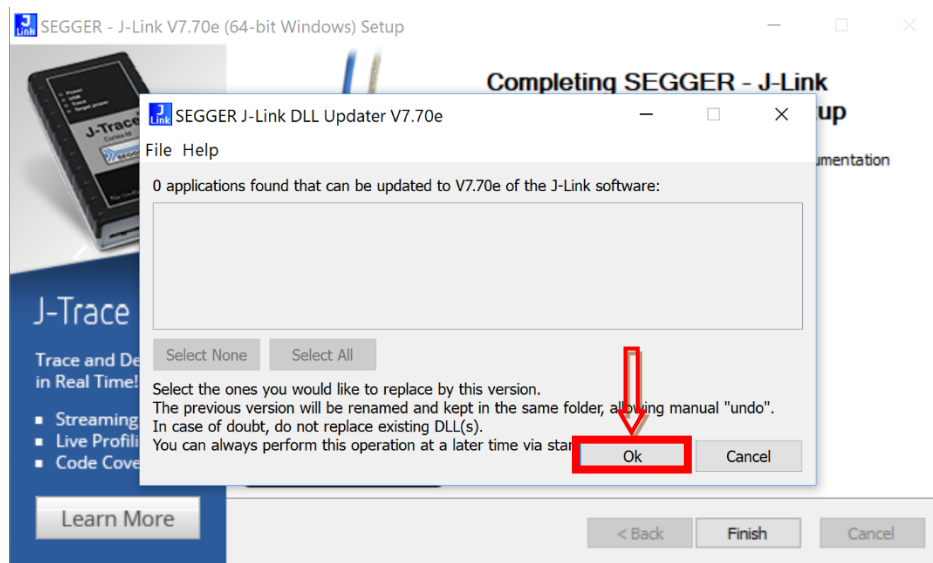
8. Program installing please wait.



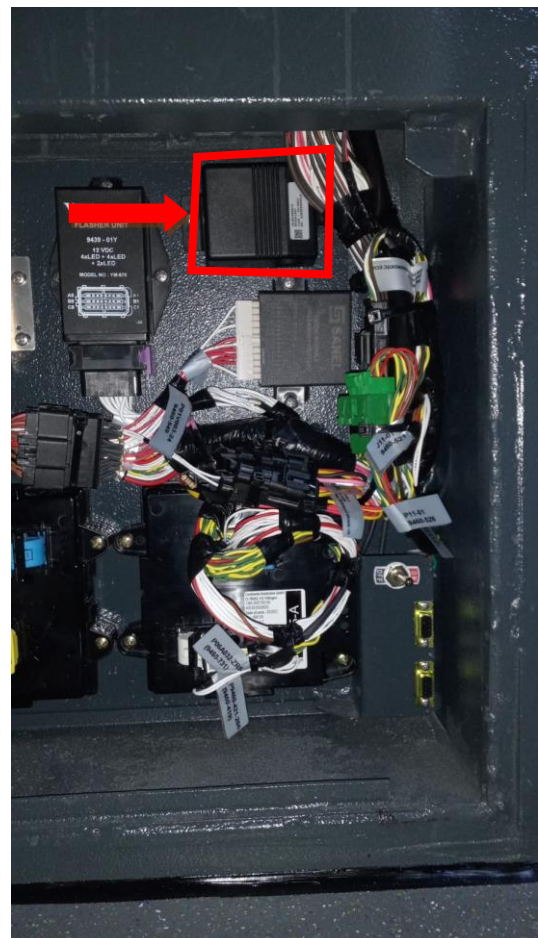
9.

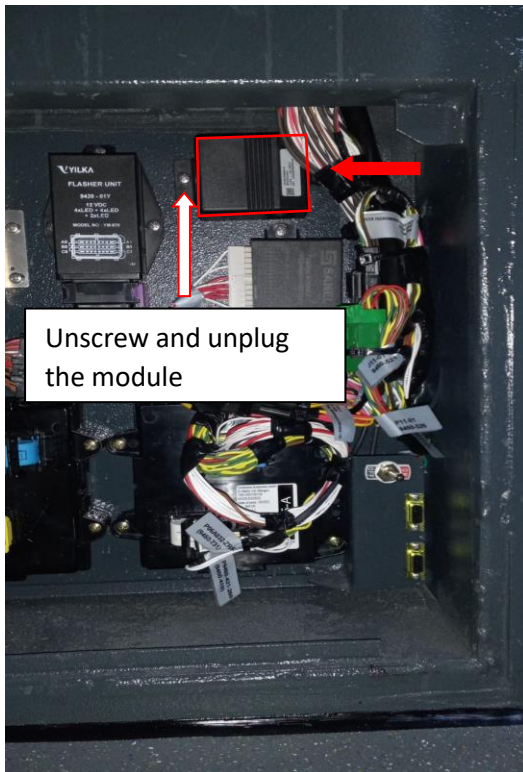


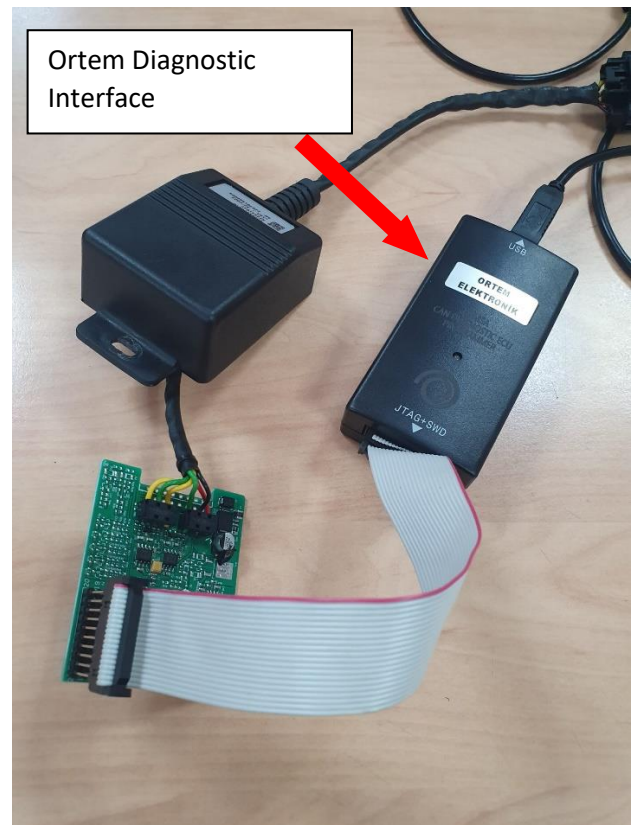
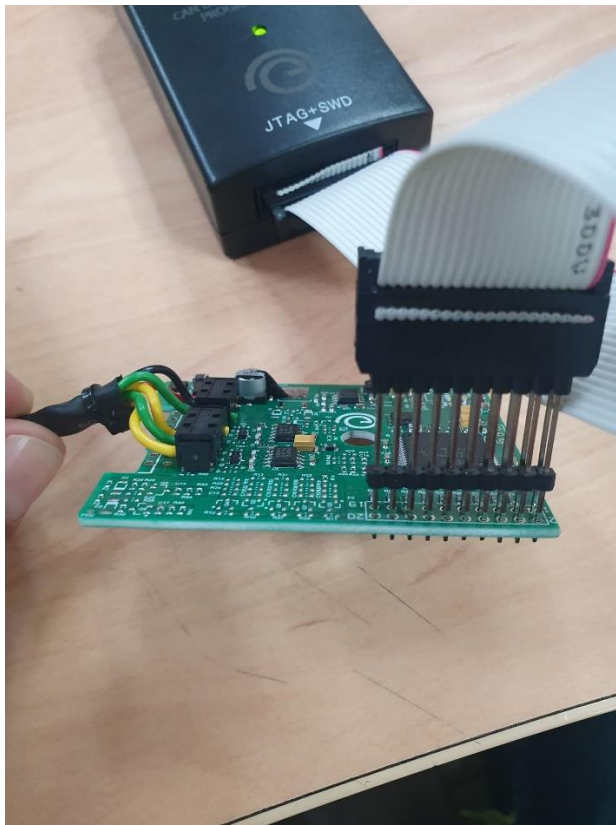
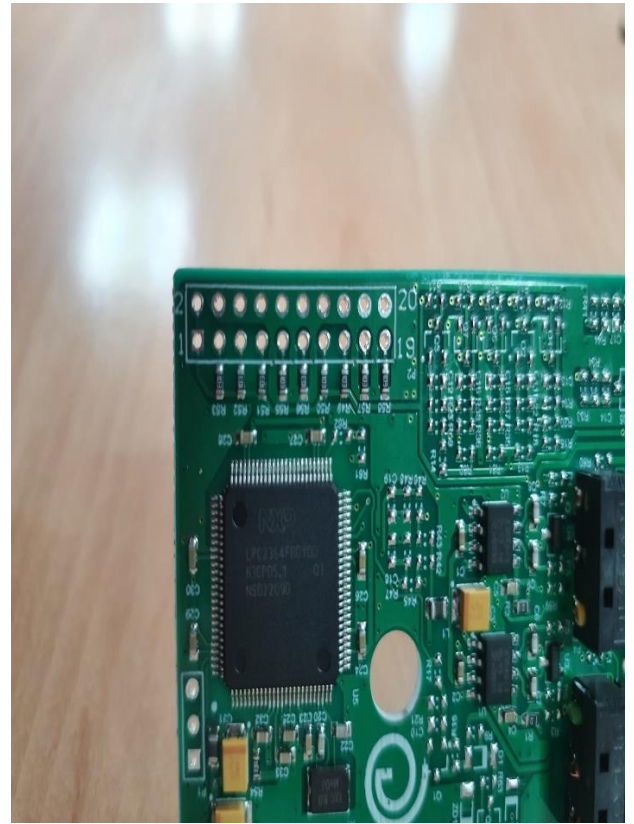
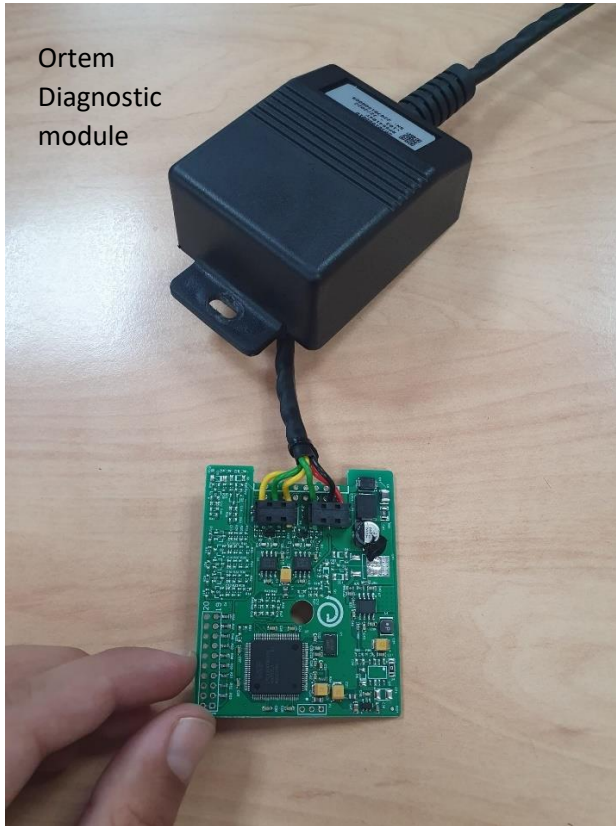
10.

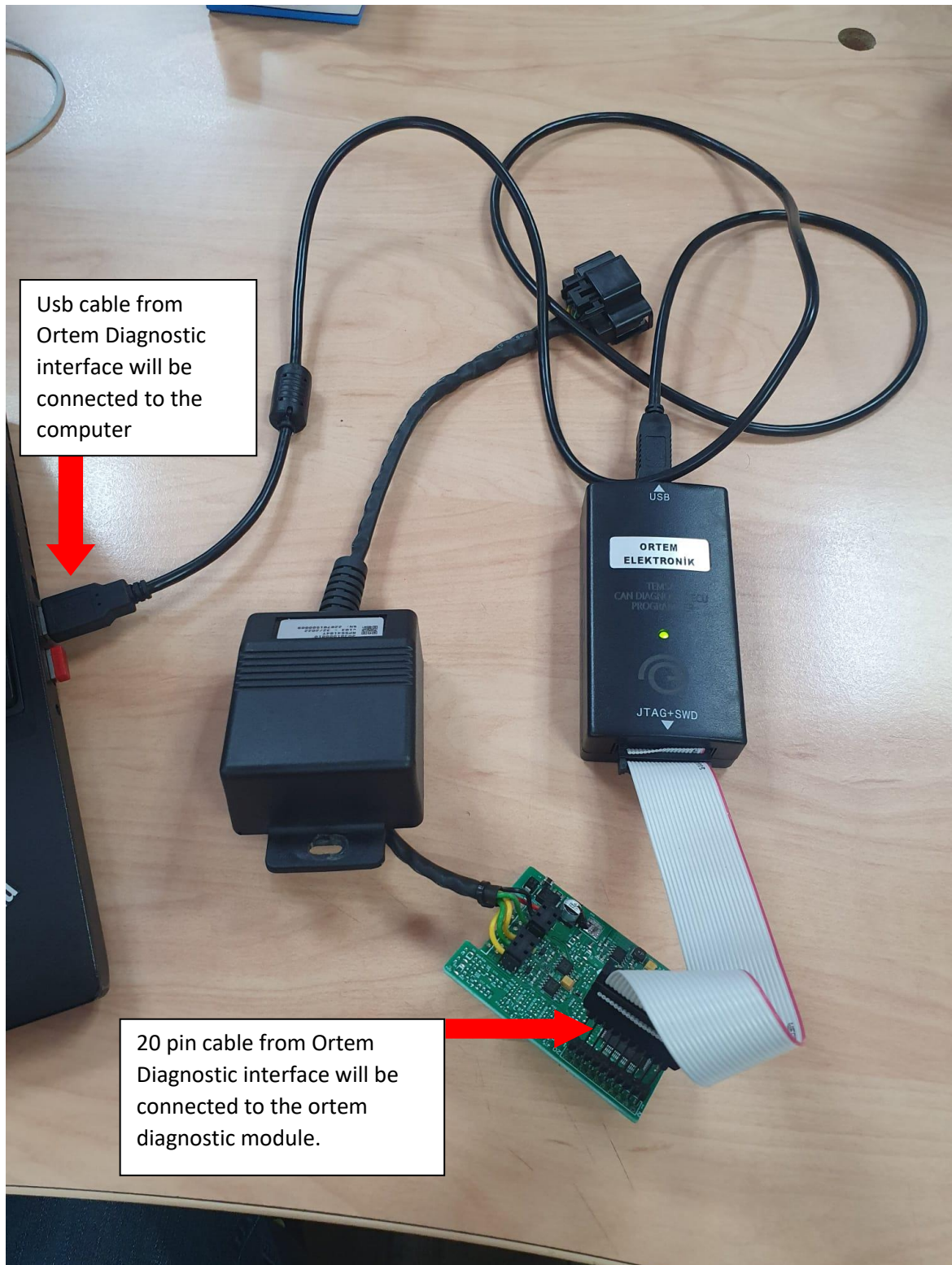


AFTER INSTALLED PROGRAM ON YOUR COMPUTER, YOU SHOULD UPDATE ORTEM DIAGNOSTIC MODULE ACCORDING TO INSTRUCTION BELOW.





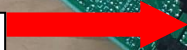




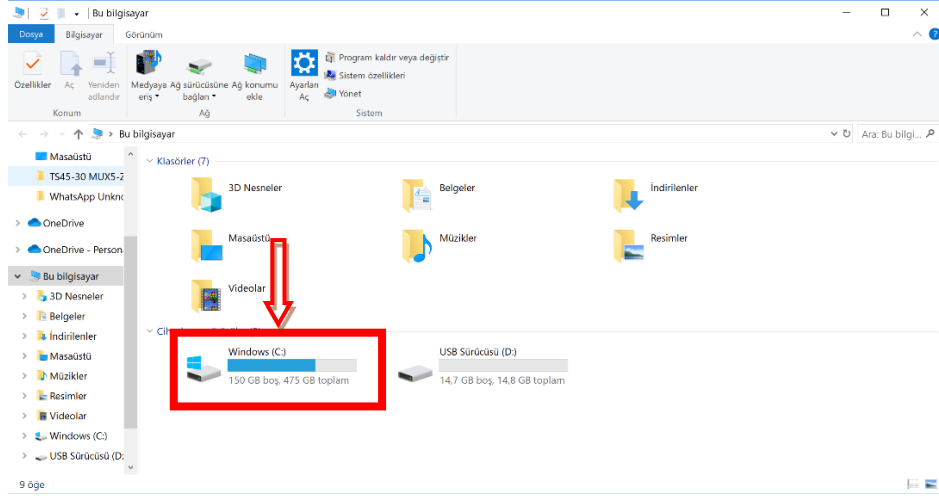
Usb cable from Ortem Diagnostic interface will be connected to the computer



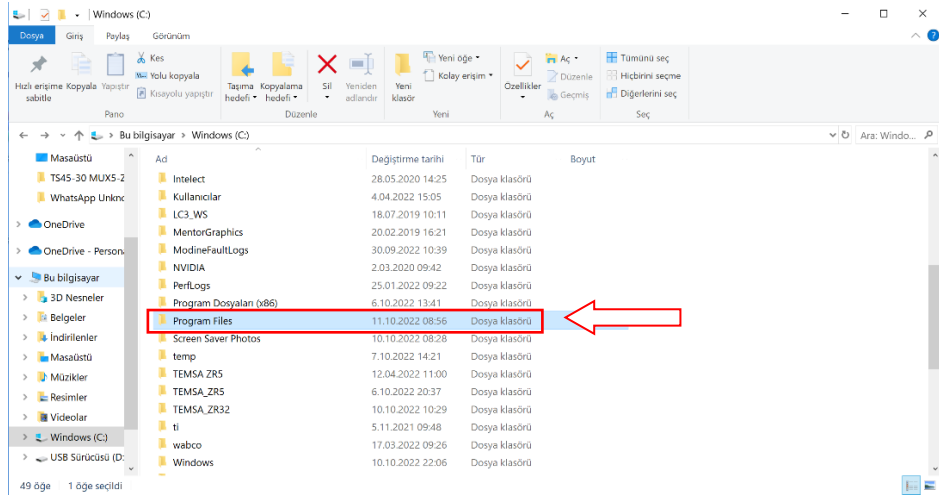
20 pin cable from Ortem Diagnostic interface will be connected to the ortem diagnostic module.



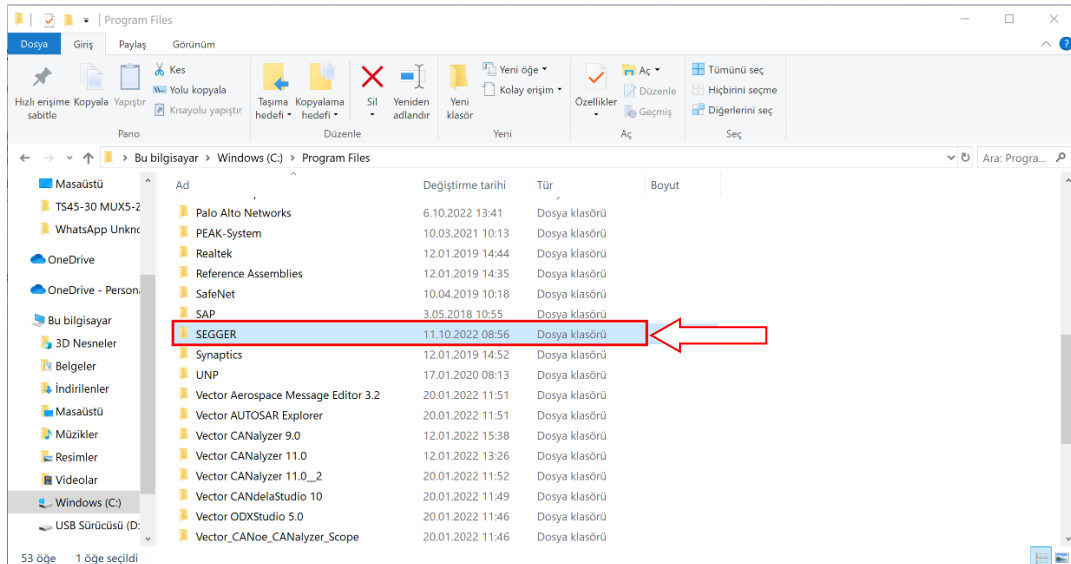
11.



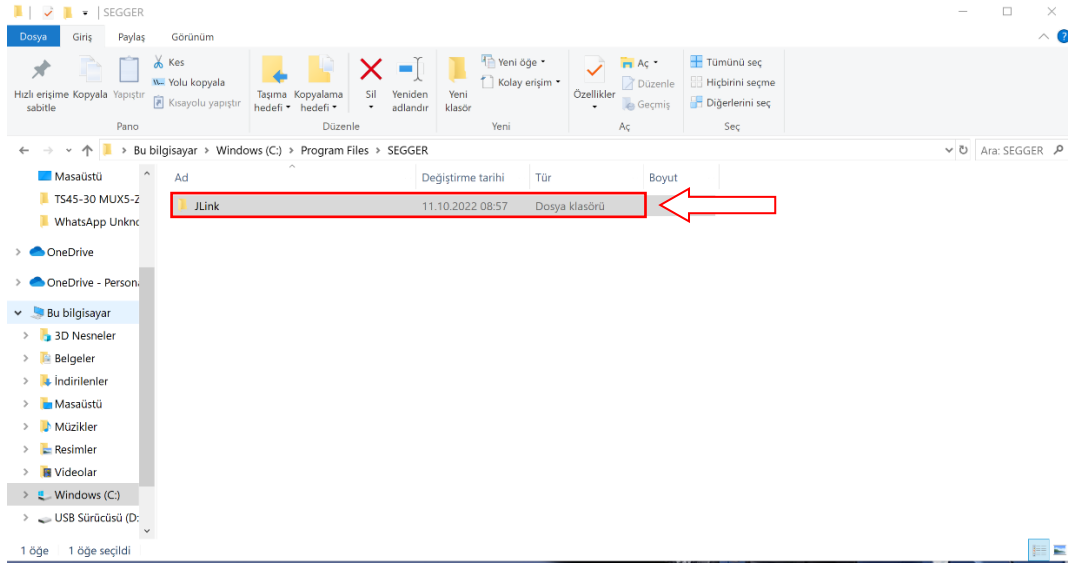
12.



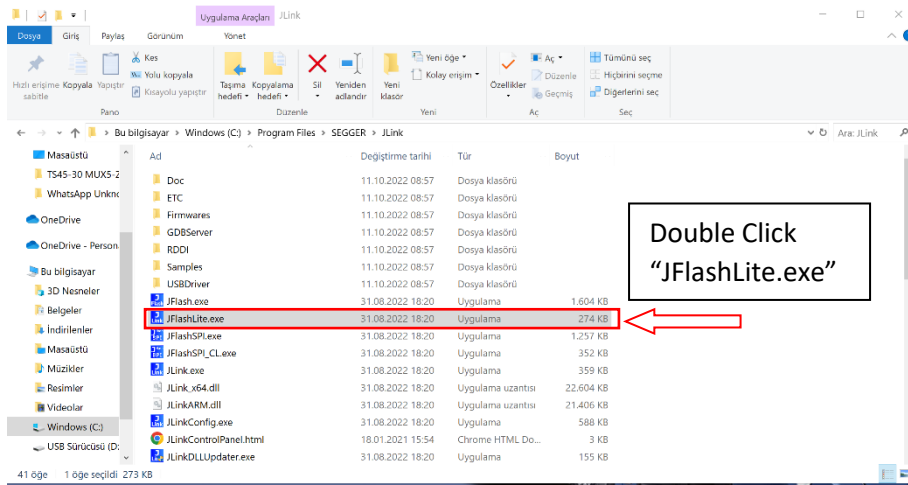
13.



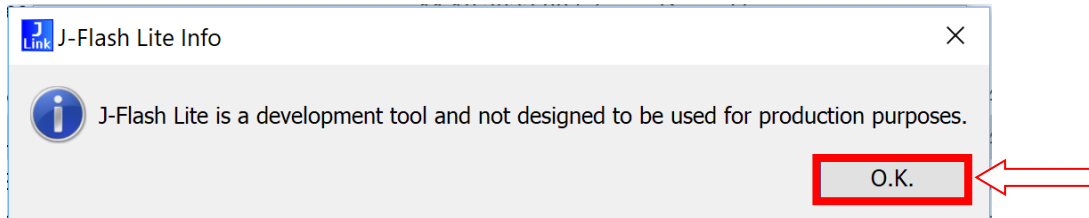
14.



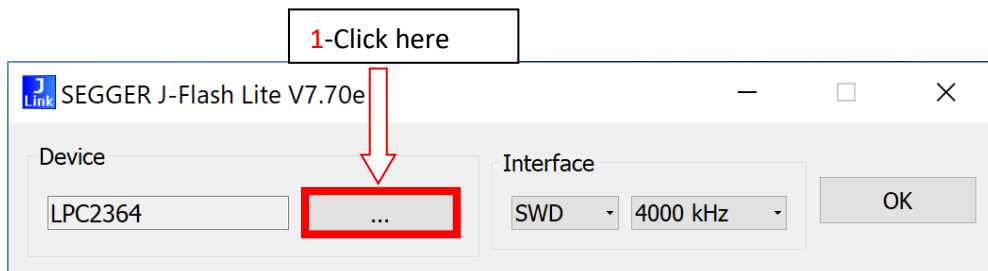
15.

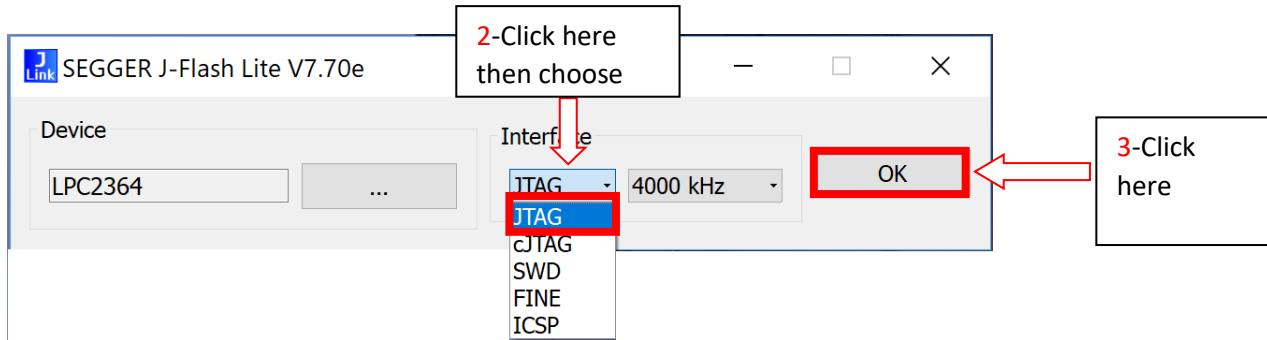


16.

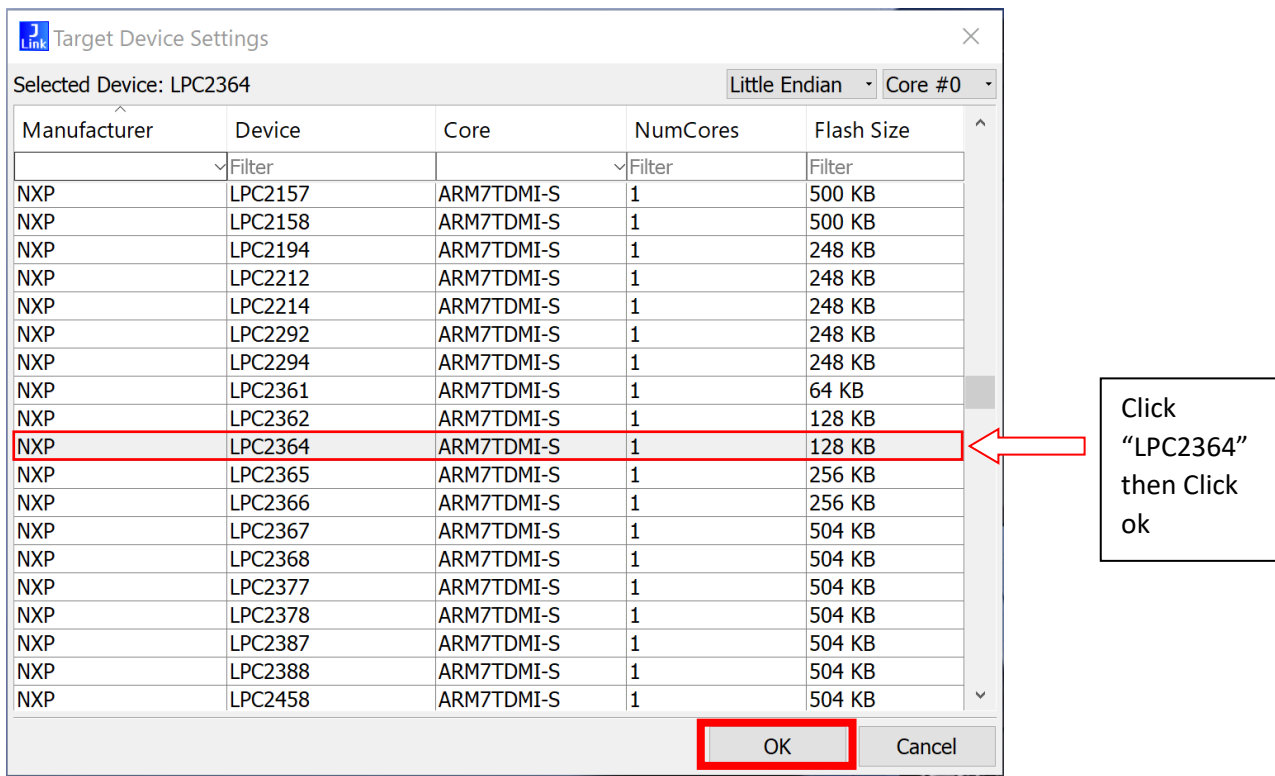


17.

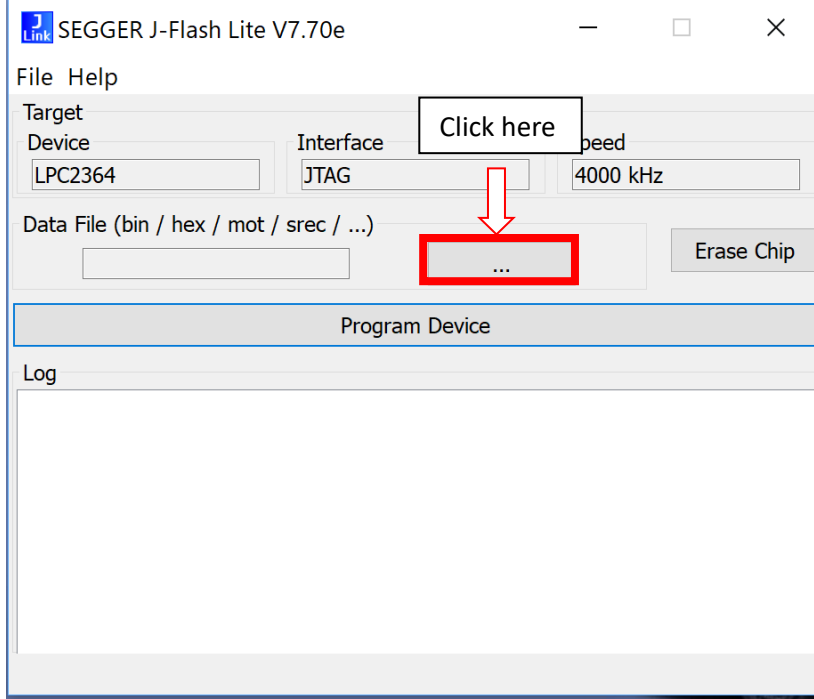




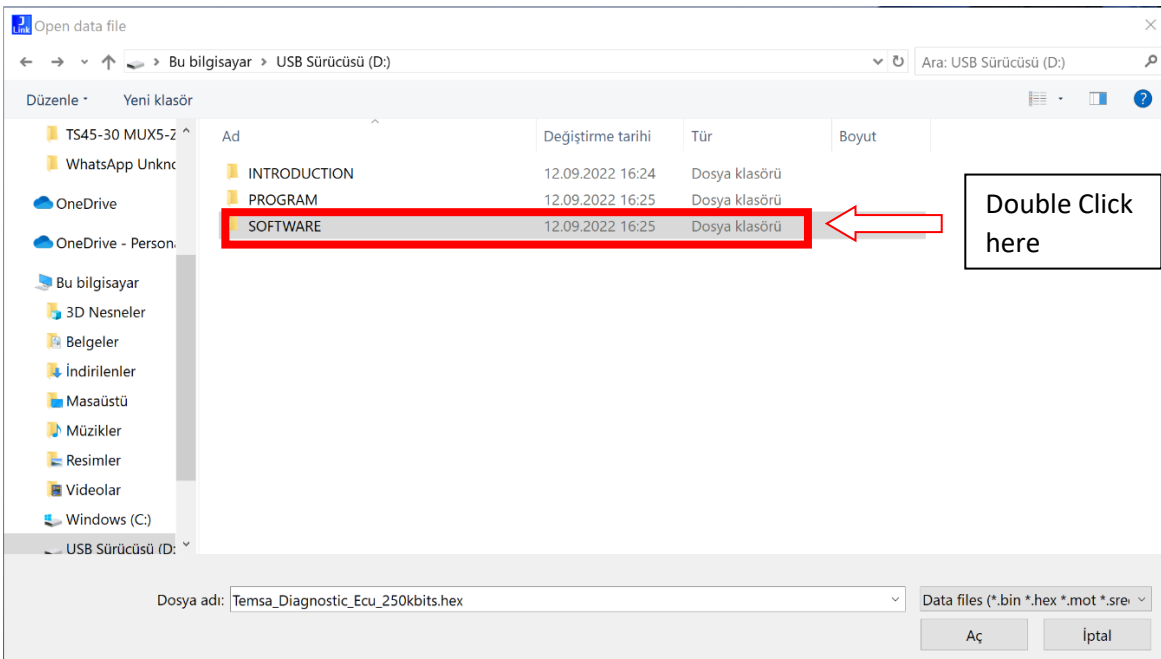
18.



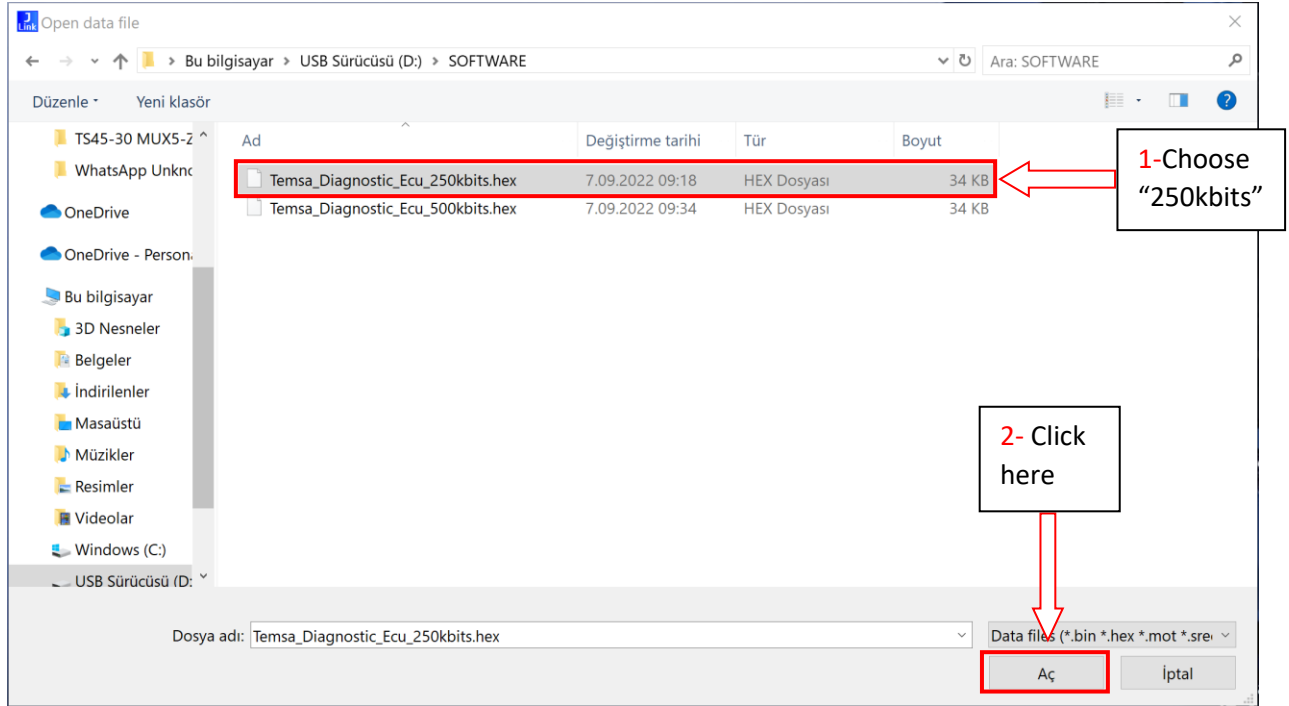
19.



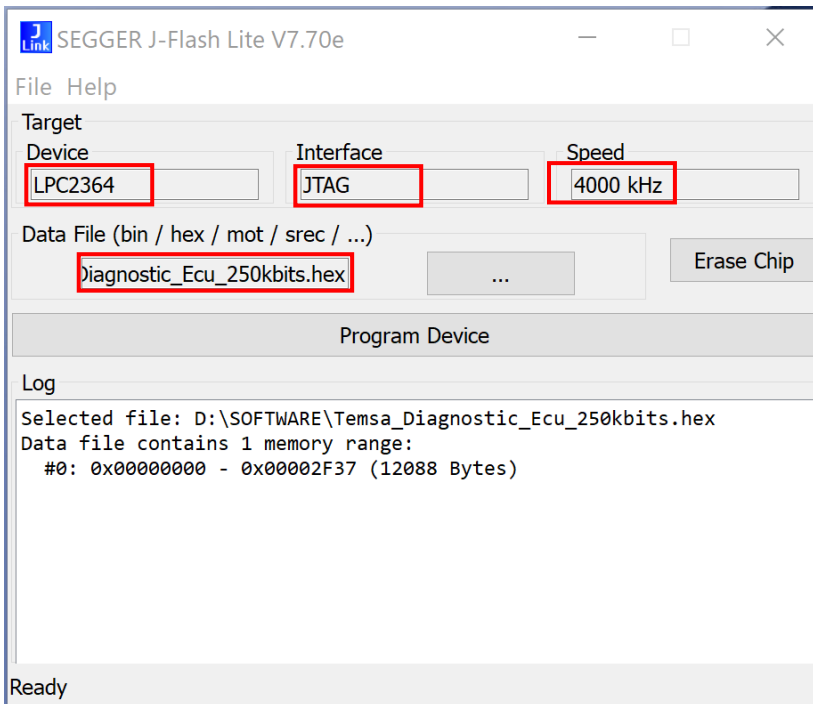
20.



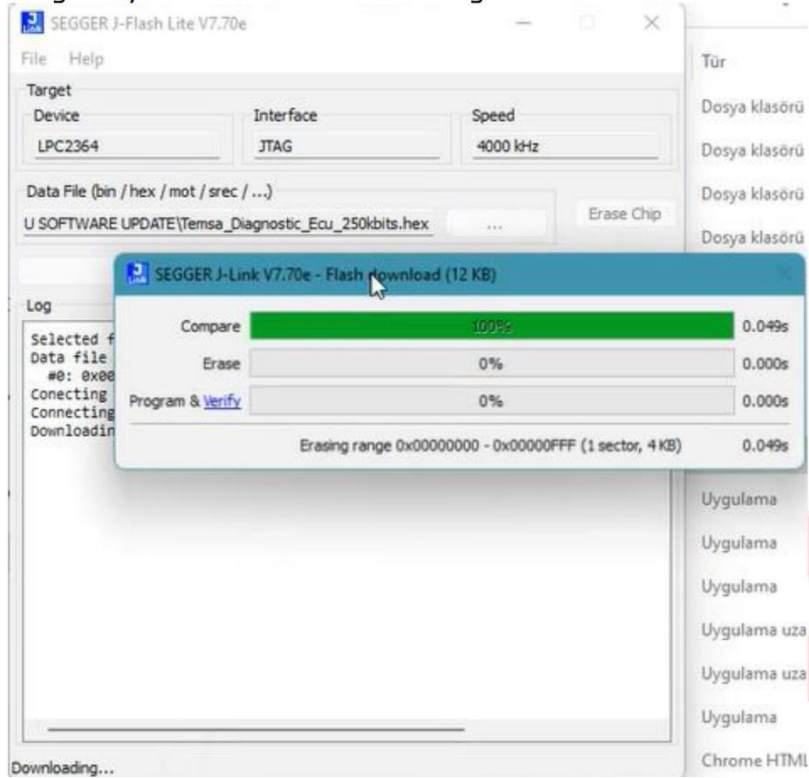
21.



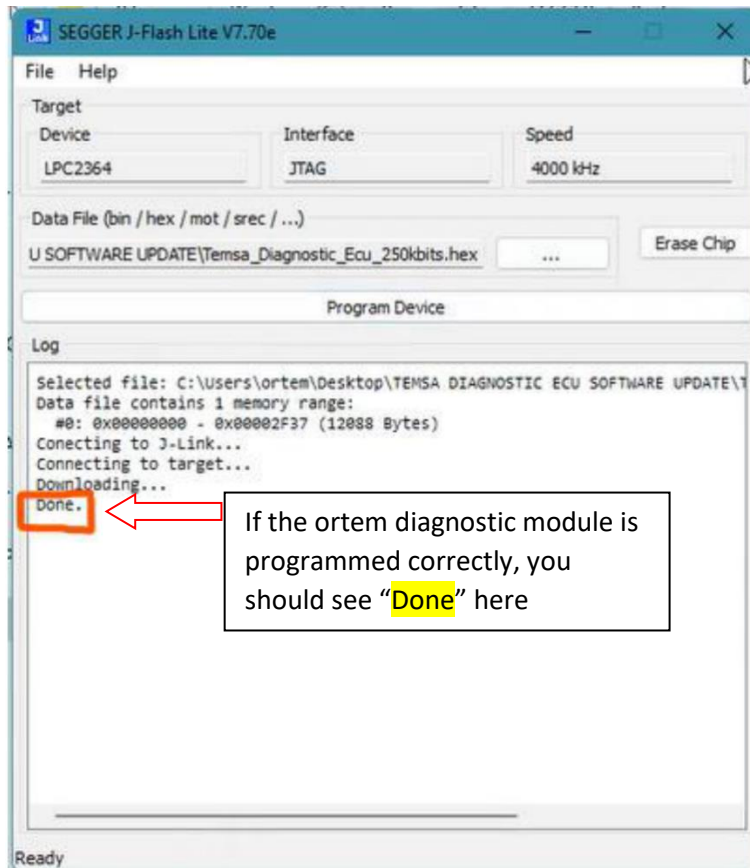
22. You should check all things (in the red boxes) are correct. After that click "Program Device".



23. If everything is correct, you should see picture of below



24.



Vehicle List

Chassis	Otpa	Vehicle	Country
NLTAPLA58N1000273	OA16469	TS30	ABD
NLTAPLA56N1000272	OA16468	TS30	ABD
NLTAPLA54N1000271	OA16467	TS30	ABD
NLTAPLA52N1000270	OA16421	TS30	ABD
NLTAPLA56N1000269	OA16420	TS30	ABD
NLTAPLA54N1000268	OA16419	TS30	ABD
NLTAPLA52N1000267	OA16418	TS30	ABD
NLTAPLA50N1000266	OA16417	TS30	ABD
NLTAPLA59N1000265	OA16416	TS30	ABD
NLTAPLA57N1000264	OA16415	TS30	ABD
NLTAPLA55N1000263	OA16414	TS30	ABD
NLTAPLA53N1000262	OA16413	TS30	ABD
NLTAPLA51N1000261	OA16412	TS30	ABD
NLTAPLA5XN1000260	OA16392	TS30	ABD
NLTAPLA53N1000259	OA16391	TS30	ABD
NLTAPLA51N1000258	OA16390	TS30	ABD
NLTAPLA5XN1000257	OA16389	TS30	ABD
NLTAPLA58N1000256	OA16388	TS30	ABD
NLTAPLA56N1000255	OA16387	TS30	ABD
NLTAPLA54N1000254	OA16386	TS30	ABD
NLTAPLA52N1000253	OA16385	TS30	ABD
NLTAPLA50N1000252	OA16384	TS30	ABD
NLTAPLA59N1000251	OA16383	TS30	ABD
NLTAPLA57N1000250	OA16382	TS30	ABD
NLTAPLA50N1000249	OA16272	TS30	ABD
NLTAPLA50M1000248	OA16248	TS30	ABD
NLTAPLA57N1000281	OA15583	TS30	ABD

LABOR BREAKDOWN

Application	Time
Uploading the up-to-date Multiviu program.	45
Uploading the up-to-date Ortem Diagnostic Module.	45
Total Labor Time	90