

## SERVICE POLICY LETTER

Reference number:	SPL-30-1545	Issued: 27th September 2022
Subject:	Phased Launch of Bosch MTS 6531 VCI Unit	
Model(s):	All Vehicles	
Applicable to:	UK, The United States, Canada, and Europe (Excluding Russia & Ukraine)	
Distribute to:	After Sales Manager Executive Manager Service Manager Sales Manager	Warranty Staff Technician(s) Parts Staff

Dear Dealer Partners,

Aston Martin are pleased to announce the phased launch of the new Bosch MTS 6531 VCI unit. This replaces the Bosch MCS1 VCI unit part number: 43-28341 (previously 43-27880).

The Bosch MTS 6531 VCI unit contains new features designed to help diagnose vehicle problems more efficiently and provides support for future vehicle architectures.

To setup the Bosch MTS 6531 VCI unit, refer to Bosch MTS 6531 Quick Start Installation Instructions. This gives instructions to install a new VCI manager and a new version of AMDS (AMDSB) which are necessary to support this new VCI unit.

**Note: One Bosch MTS 6531 VCI unit part number: 43-28811 will be automatically issued by Parts Operations to applicable Dealers from week commencing the 26th September 2022.**

**New AMDS kits ordered will be supplied with the Bosch MCS1 VCI unit part number: 43-28341 until the Bosch MTS 6531 VCI unit is backwards compatible with VH vehicles.**

### Bosch MTS 6531 VCI and AMDSB Compatibility

- The Bosch MTS 6531 VCI is only compatible with "AMDSB" and is not compatible with "AMDS2" or "AMDS1". **Important do not interchange VCI units in AMDSB and AMDS2.**
- AMDSB looks and functions the same as AMDS2.
- AMDSB uses the same license as AMDS2 and a new license is not necessary.
- AMDS2 will function as normal for AM platform vehicles with the Bosch MCS1 VCI.
- AMDS1 must continue to be used for VH platform vehicles with the Bosch MCS1 VCI.
- The new Bosch MTS 6531 VCI unit is only compatible with AM vehicles at launch and will be made compatible with VH vehicles in approximately Q3 of 2023.

### Bosch MTS 6531 VCI Features

- 800 MHz processor, and optimised software structure. In addition, the VCI software facilitates secure immobiliser system reprogramming strategies.
- The MTS 6531 VCI includes an embedded runtime framework which enables the VCI to run embedded applications.
- The MTS 6531 supports an extended temperature range of -20 °C to 70 °C, sleep/wake modes, IP54 protection and can store data in the VCI. For example, drive recorder log files.
- Embedded web server supports external browser-based display devices via HTML for an extended range of service bay use cases.
- DoIP (Diagnostics over IP), CAN FD (Flexible Data rate CAN) and three independent CAN controllers enable the MTS 6531 to support the newest and most advanced vehicle electrical architectures.
- PicoScope is now compatible for engine rpm and vehicle speed when using NVH diagnostics.

### Bosch MTS 6531 Quick Start Installation Instructions

*Note: Images in this procedure are for illustration purposes only. The version numbers shown may be different to the latest version numbers available.*

**CAUTION: CONNECT THE AMDS TO AN ELECTRICAL SUPPLY WHEN YOU DO THE PROCEDURE THAT FOLLOWS. IF THE AMDS BATTERY BECOMES DISCHARGED DURING THE SOFTWARE UPDATE, THE UPDATE CAN FAIL.**

### Bosch VCI Manager Software Installation

**Important Note: If a CD is included with the new Bosch MTS 6531 VCI unit please discard it and do not use.**

1. Make a new folder on your PC and name it: "AMDS Software".
2. Log into Technical Hub and navigate to "AMDS" – "AMDS Software".  
Download and save both the files shown to your "AMDS Software" folder (refer to Figure 1).

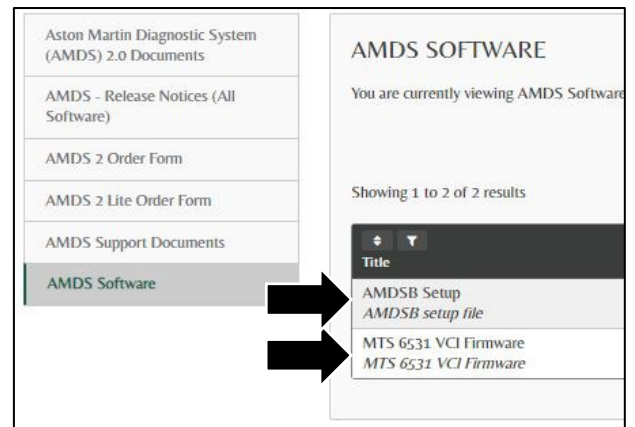


Figure 1

3. Go to your "AMDS Software" folder and click the latest version of the "MTS 6531 Setup.exe" software setup file (refer to Figure 2).

**Note: You must have administrator rights to install the Bosch VCI manager software.**

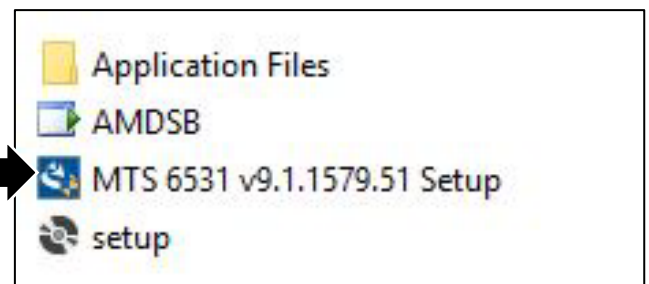


Figure 2

4. In the InstallShield Wizard window, click "Next" (refer to Figure 3).

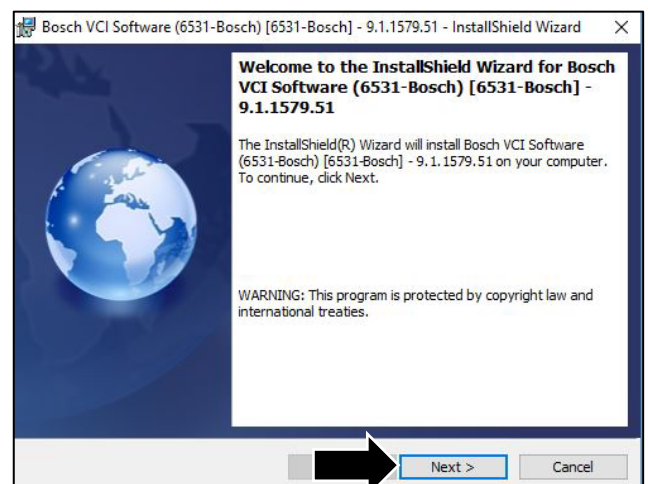


Figure 3

5. Click "Next" (refer to Figure 4).

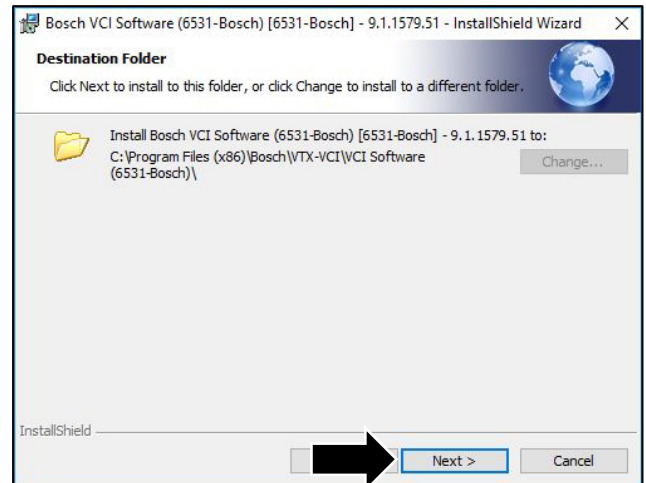


Figure 4

6. Click "Install" to begin the installation (refer to Figure 5).

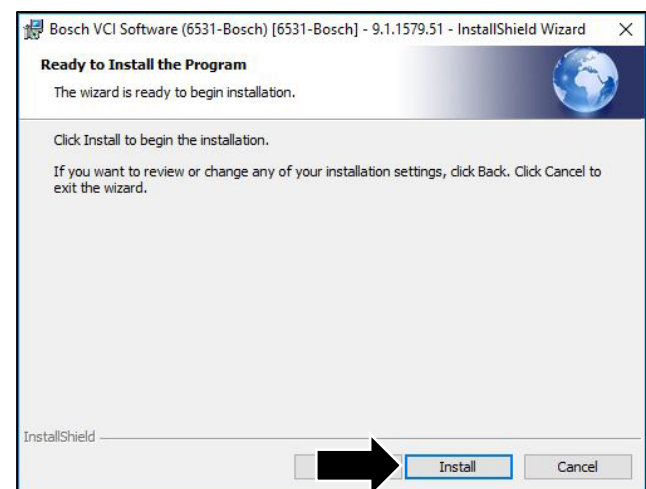


Figure 5

7. Wait for the installation to complete then click "Finish" (refer to Figure 6).

**Note:** A new "VCI Manager" icon will show on your desktop.

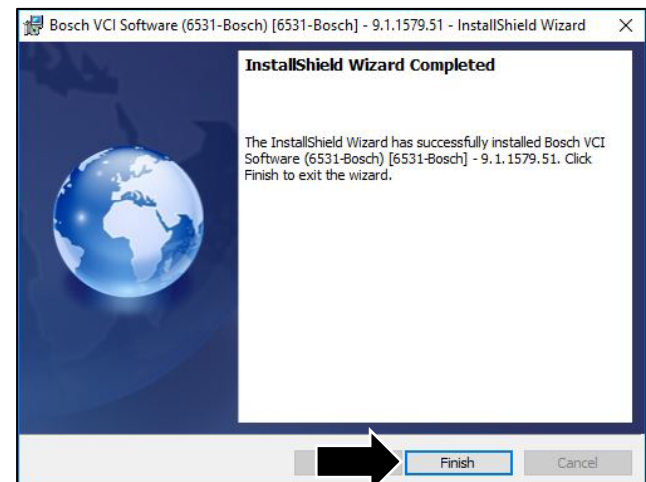


Figure 6

8. Connect the USB cable into the connector marked B on the Bosch MTS 6531 VCI and the USB port on the PC (refer to Figure 7).

**Note:** *The VCI will beep once when it has connected to the PC.*

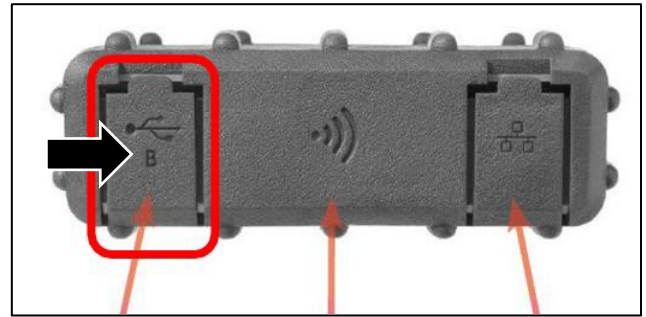


Figure 7

9. Click the “VCI Manager” icon on your desktop then click “Connect” (refer to Figure 8).
  - When the VCI has connected to the PC, a white USB symbol will show on the VCI icon.
  - If the VCI has not connected, a red cross will show on the VCI icon.
  - A green tick will show on the VCI icon after you click the connect button.

If the “VCI Update” window is shown go to step 10.

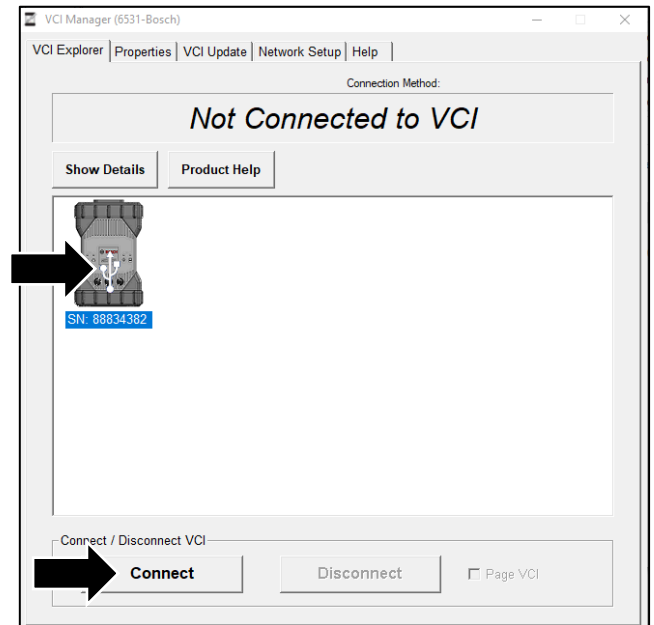


Figure 8

10. Click the “VCI Update” tab then click “Start Update” and follow the instructions (refer to Figure 9).

**Note:** *It can take up to 30 minutes for the update to complete.*

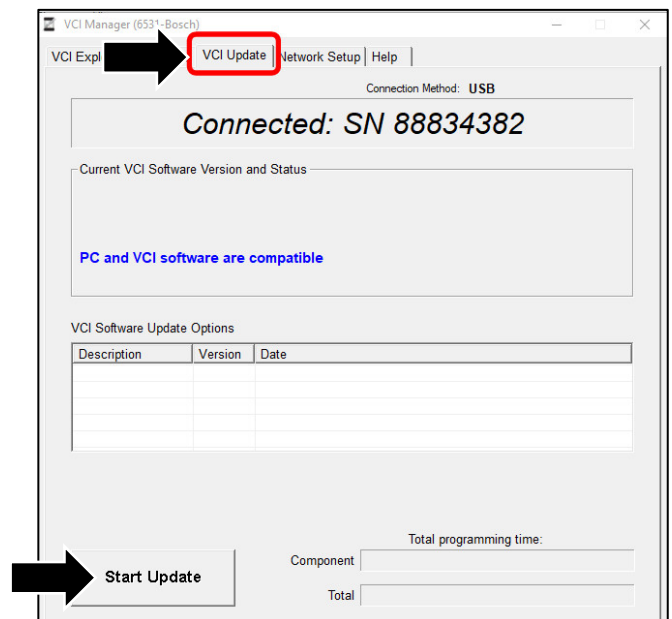


Figure 9

11. Close the “VCI Manager” application.

12. Connect the OBD cable to the D-type connector and the vehicle OBD port (refer to Figure 10).

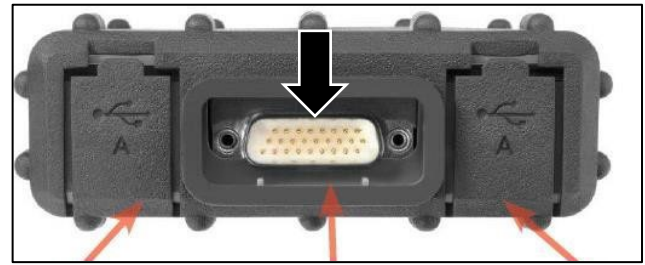


Figure 10

### AMDSB Software Installation

1. To install “AMDSB” go to your “AMDS Software” folder and click the “setup.exe” icon (refer to Figure 11).



Figure 11

2. Click “Install” (refer to Figure 12).

**Note: This will not overwrite the version of AMDS already installed.**

**AMDSB uses the same license as AMDS and a new license is not necessary.**

**AMDSB will run automatically after it has installed.**

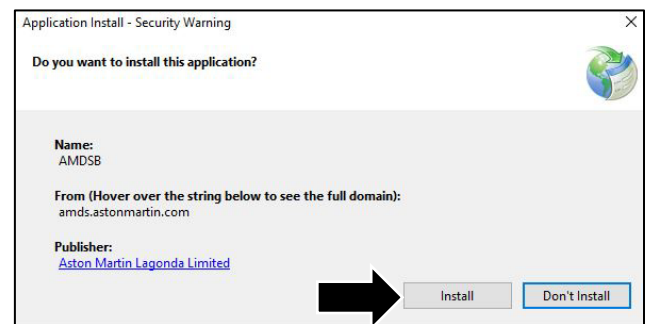


Figure 12

3. Close the VIN log on window and main menu.
4. A new “AMDSB” icon will show on your desktop (refer to Figure 13).



Figure 13

5. Connect the Bosch MTS 6531 VCI to the vehicle and wait until you hear a beep.
6. Connect the Bosch MTS 6531 VCI to your PC then start AMDSB.  
**Note: If a windows security alert shows, click on the “Allow access” button.**