

MAS003315 MSC 22-41

CAMPAIGN 553

FROM: Maserati TSO

TO: Maserati Network



Maserati

PERSONAL SERVICE LAB

MASTERS OF CARE

Service Campaign 553 MC20 - IPC Software Update

TECHNICAL SERVICE OPERATIONS



DATE: OCTOBER 21 2022

Certain Maserati MC20 MY22 listed in MODISCS+ are involved in a Service Campaign concerning the IPC (Instrument Panel Cluster) Software Update to fix a bug that can cause the calculation of the average fuel consumption to freeze (mpg stuck at 0.0) during certain driving conditions. (standstill acceleration, long period in idle, etc.)

We remind you that all the Service campaigns must be performed within the first workshop visit, regardless of the Mandatory setting set in Modis, as required by Maserati policies.

Also, for vehicles in Stock Dealer / PDI, it is necessary to carry out all campaign operations before delivery to the end customer, as required by the White Book and explicitly reported in the Pre-delivery checklist.

Please read and review this bulletin first before starting the procedure.
Contact your Regional AfterSales Manager (RAM) or the Technical Support Helpdesk if you have any questions. (Maseratitechsupport@maserati.com)

Thank You for your continued support and cooperation.

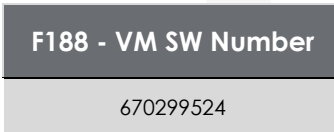
Maserati Americas
Aftersales Dept.

Technical Procedure

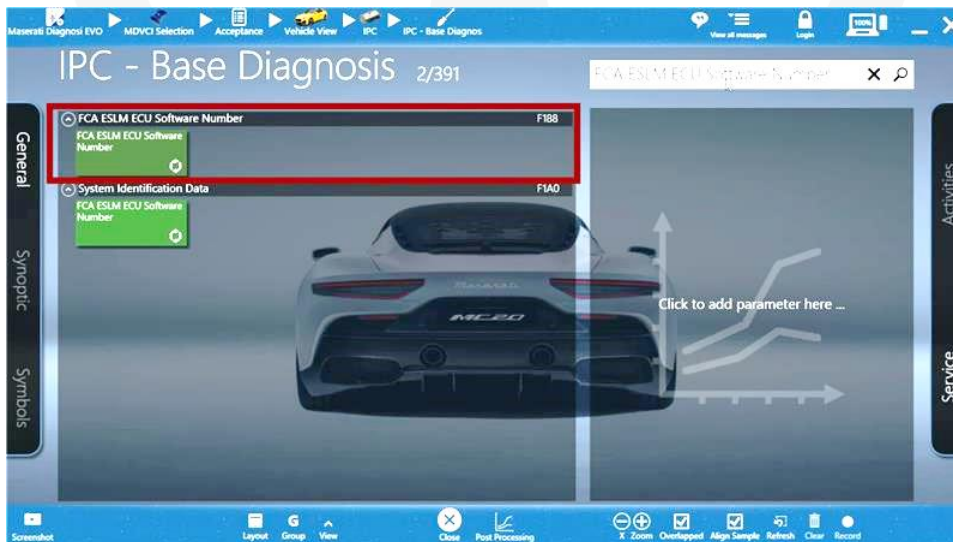
 All images shown in this bulletin are for illustrative purposes only

1. Always check in ModisCS+ to see if the vehicle is involved in this campaign and if the The campaign has not been previously performed.
2. Before proceeding, please ensure that the Engine is OFF. Connect the 12V Vehicle Battery to a Battery Maintainer.
3. Connect the MD EVO to the VCI2 using the USB cable.
4. Connect the VCI2 to the vehicle.
5. Key ON Engine OFF (KOE) check battery voltage and ensure it is 12V or above.
6. With the MD EVO select **IPC ► ECU Programming** and follow the prompts.
Note: The programming will take about 1 hour to perform.

The Sw Below (or newer) must be installed



Note: after the IPC - ECU Programming, please make sure in the IPC - Base Diagnosis - FCA ESLM ECU Software Number that the new software has been installed correctly.



Warranty Claim

Fill in the relative Warranty Claims as follows:

Description	Code
Campaign Number	553
Warranty Code	23
Fault Code	063
Component Code	8.50.001
Operation Code	8.50.001.A (0,25)