



# Technical Service Bulletin

SUBJECT:		No: <b>TSB-22-00-013</b>	
<b>NEW MODEL FEATURES &amp; SERVICE INFORMATION - 2023 OUTLANDER SPORT</b>		DATE: <b>October 2022</b>	
		MODEL: <b>2023 Outlander Sport</b>	
CIRCULATE TO:	<input type="checkbox"/> GENERAL MANAGER	<input checked="" type="checkbox"/> PARTS MANAGER	<input checked="" type="checkbox"/> TECHNICIAN
<input checked="" type="checkbox"/> SERVICE ADVISOR	<input checked="" type="checkbox"/> SERVICE MANAGER	<input checked="" type="checkbox"/> WARRANTY PROCESSOR	<input checked="" type="checkbox"/> SALES MANAGER

## PURPOSE



This bulletin contains important new model features, carry over features, service and option package information for the **2023 Outlander Sport** (U.S. models only). Review the details that follow to familiarize yourself with this information. Refer to the 2023 Outlander Sport Service Manual on MEDIC, MDL, or CD (p/n MSCD-017B-2023), and the Owner's Manual for details on these and other features.

AWC is now standard on all 2023 Outlander Sport.

## AFFECTED VEHICLES

2023 Outlander Sport

## U.S. MODEL LINEUP

MODEL	ENGINE	TRANSMISSION
S (AWC)	4B11 - 2.0L DOHC MIVEC 16V 4 cyl.	CVT
ES (AWC)		
LE(AWC)		
RALLIART (AWC)		
SE (AWC)		
GT (AWC)	4B12 - 2.4L DOHC MIVEC 16V 4 cyl.	

## SERVICE INFORMATION

See TSB-22-00-014 for 2023 Outlander Sport Technical Specifications.

**NOTE:** All information contained in this document is for Internal Training Purpose only. If you are a customer viewing this document please go to [mitsubishicars.com](http://mitsubishicars.com) for required disclaimers.

## FEATURES BY MODEL

### OUTLANDER SPORT S FEATURES

- 16" Alloy Wheels
- LED Headlights (Low/High)
- LED Daytime Running Lights (DRL)
- Auto Light Control
- Auto Dimming Rear Mirror
- Auto High Beam
- Heated Power Mirror
- Single Zone Auto A/C
- Forward Collision Mitigation
- Lane Departure Warning
- Active Stability Control
- Remote Keyless Entry
- Rain-sensing Wipers
- 7.0" Display Audio w/HD Radio, 4 Speakers, Bluetooth, Steering Controls & 1 USB



### OUTLANDER SPORT ES FEATURES

- 18" Alloy Wheels
- LED Fog Lights



### OUTLANDER SPORT LE FEATURES

- 18" Black Alloy Wheels
- Black Side Mirrors
- Black Grille
- Red Stitching on Interior Shifter, Steering Wheel, Parking Brake & Seats
- Leather Steering Wheel
- Leather Shifter Knob
- Heated Front Seats
- 8" Display Audio with AA & CP SiriusXM w/3 Month Access & Voice Recognition
- 2 USB Ports
- 6 Speakers



## OUTLANDER SPORT RALLIART FEATURES

- Ralliart Mud Flaps
- Ralliart Floor Mats
- Red Stitching on Interior Steering Wheel, Shifter Knob & Brake Lever
- Ralliart Badge
- Red and Black Spoiler
- Red and Black Front Side and Rear Trim Effects
- Ralliart Graphics



## OUTLANDER SPORT SE FEATURES

- Power Folding Mirrors
- Side Mirror Indicators
- Illuminated Vanity Mirrors
- Synthetic Leather Seats
- FAST-Key
- Blind Spot Warning
- Rear Cross Traffic Alert



## OUTLANDER SPORT GT FEATURES

- 2.4L MIVEC DOHC
- Black Roof Rails
- Genuine Leather
- 4-Way Power Driver Seat
- Black Headliner
- Drive Mode Selector
- Auto Dimming Mirror with HomeLink
- Blind Spot Warning
- Rear Cross Traffic Alert

## RALLIART

New Ralliart Edition trim is introduced for 2023 with exclusive features.

Exterior:

- Ralliart Mud Flaps
- Red and Black Front
- Red, Side and Rear Trim Effects
- Red and Black spoiler
- Ralliart Badge on Tailgate
- 18" Black Painted Alloy Wheels
- Black Outside Mirrors

Interior:

- Red Stitching on Steering Wheel, Shifter Knob and Brake Lever
- Red Stitched Seats
- Ralliart Floor Mats



## INTERIOR

Genuine Leather Seats are standard for the 2023 Outlander Sport GT Trim:



## ENGINE

The 2.0L MIVEC (Mitsubishi Innovative Valve-timing Electronic Control) engine balances maximum HP of 148 with low fuel consumption for a smooth, efficient drive. The GT model features even more power with a 2.4L version of the MIVEC.



## TRANSMISSION/DRIVE SYSTEM

All models equipped with All Wheel Control (AWC) have 4WD control logic that protects the drive-train by suppressing heat generation of the electronic-control coupling and provides extraordinary traction and stability in all driving conditions.

## CONVENIENCE

8" Smartphone Link Display Audio system is a standard feature beginning with the LE model.



## EXTERIOR

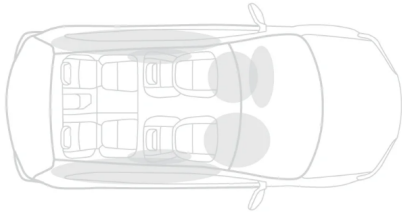
### Paint

	Alloy Silver	Labrador Black	Mercury Gray	White Diamond	Oak Brown	Octane Blue	Red Diamond	Sunshine Orange
S								
ES								
LE								
SE								
GT								
Ralliart								

## SAFETY FEATURES

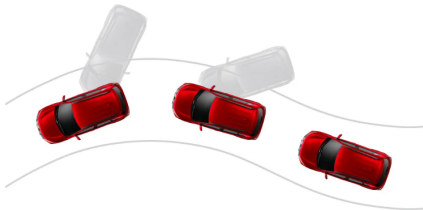
### 7-Airbag System

The Outlander Sport includes six standard airbags: front, front-seat-mounted, and side-curtain airbags. There is also a seventh airbag found underneath the driver's side dashboard.



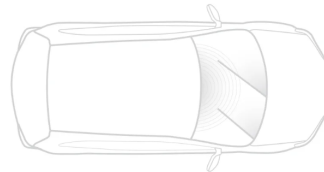
### Active Stability Control (ASC)

Active Stability Control employs a series of sensors that constantly monitor the grip of your tires. If one of your wheels begin to slip, this system will work with your Anti-Lock Braking to help you keep control.



### Rain Sensing Wipers

Rain Sensing Windshield Wipers activate at the first drop of rain and adjust to match the rainfall.



### LED Daytime Running Light (Headlights/Foglights)

Standard for all models are LED Daytime Running Lights (DRL). LED Foglights are also standard with the exception of the S model.



### RISE Body Construction

Reinforced Impact Safety Evolution (RISE) technology helps to route energy away from the driver and passengers in the event of a high-impact collision.



## PORT PACKAGES (U.S. Models)

Feature Description	2.0 S AWC	2.0 ES AWC	2.0 LE AWC	2.0 Ralliant AWC	2.0 SE AWC	2.4 GT AWC
<b>Exterior Package</b>						
Rear Undercover	OPT	OPT	OPT	OPT	OPT	OPT
Front Undercover						
<b>LED Illumination Package</b>						
Floor Illumination (Blue LEDs)	OPT	OPT	OPT	OPT	OPT	OPT
Interior Lights						
<b>Cargo Package</b>						
Cargo Mat	OPT	OPT	OPT	OPT	OPT	OPT
Cargo Net						
<b>All Weather Package</b>						
All Weather Floor Mats	OPT	OPT	OPT	OPT	OPT	OPT
Cargo Tray						
<b>Popular Value Package</b>						
Wheel Locks						
Exhaust Finisher						
Front and Rear Mudguards						
Black Leather/Aluminum Shift Knob						
Cargo Net	OPT	OPT	OPT	OPT	OPT	OPT
Scuff Plates						
Aluminum/Leather Shift Knob						
Cargo Net						
Cargo Mat						
Cargo Mat						
<b>Protection Package</b>						
Hood Protector						
All Weather Floor Mats	OPT	OPT	OPT	OPT	OPT	OPT
Cargo Tray						
Rear Bumper Step Protector						
Scuff Plates						
<b>Chrome Value Package</b>						
All Weather Floor Mats						
Cargo Tray	OPT	OPT	OPT	OPT	OPT	OPT
Rear Bumper Step Protector						
Scuff Plates						
<b>Protection Value Package</b>						
Scuff Plates	OPT	OPT	OPT	OPT	OPT	OPT
All Weather Floor Mats						
Cargo Tray						
<b>Convenience Value Package</b>						
Side Vier Mirror Covers						
Chrome Door Handles	OPT	OPT	OPT	OPT	OPT	OPT
Bright Tailgate Protector						
Bright Lower Door Molding						

## PORT ACCESSORY OPTIONS (U.S. Models)

Feature Description	2.0 S AWC	2.0 ES AWC	2.0 LE AWC	2.0 Ralliant AWC	2.0 SE AWC	2.4 GT AWC
<b>Port Accessory Options</b>						
Accessory Remote Engine Start	ACC	ACC	ACC	ACC	ACC	ACC
Accessory Rear Park Assist Sensors	ACC	ACC	ACC	ACC	ACC	ACC
Accessory Roof Spoiler	ACC	ACC	ACC	ACC	ACC	ACC
Accessory Hood Protector	ACC	ACC	ACC	-	ACC	ACC
Accessory Alloy Fuel Door	ACC	ACC	ACC	-	ACC	ACC
Accessory Tonneau Cover	ACC	ACC	ACC	ACC	ACC	ACC
Accessory Body Graphics	ACC	ACC	ACC	ACC	ACC	ACC
Accessory Wheel Locks	ACC	ACC	ACC	ACC	ACC	ACC
Accessory Front and Rear Mudguards	ACC	ACC	ACC	ACC	ACC	ACC
Accessory All Weather Floor Mats	ACC	ACC	ACC	ACC	ACC	ACC
Accessory Carpeted Floor Mats and Portfolio	ACC	ACC	ACC	ACC	ACC	ACC
Accessory Body Side Moldings	ACC	ACC	ACC	-	ACC	ACC
Accessory Roof Rack Crossbars	ACC	ACC	ACC	ACC	ACC	ACC
Accessory Black Lug Nuts & Wheel Locks	ACC	ACC	ACC	ACC	ACC	ACC
Accessory Carbon Grille	ACC	ACC	ACC	ACC	ACC	ACC

<b>WARRANTY</b>	
<b>U.S. and Puerto Rico</b>	<b>Canada</b>
● Basic - 5 years or 60,000 miles	● Basic - 5 years or 100,000 km
● Powertrain - 10 years or 100,000 miles (original retail purchaser only). 5 years or 60,000 miles to subsequent owners.	● Powertrain - 10 years or 160,000 km
● Rust Perforation - 7 years or 100,000 miles	● Rust Perforation - 5 years with unlimited km
● Adjustments - 1 year or 12,000 miles	● Adjustments - 1 year or 20,000 km
● Roadside Assistance - 5 years / unlimited miles	● Roadside Assistance - 5 years/unlimited km