



# TECHNICAL SERVICE BULLETIN

Classification: AT22-014	Reference: NTB22-093	Date: October 27, 2022
-----------------------------	-------------------------	---------------------------

## DTC P0780 STORED IN THE TCM

**APPLIED VEHICLES:** 2021 Rogue (T33)  
**APPLIED ENGINES:** PR25DD

### IF YOU CONFIRM

DTC P0780 (SHIFT ERROR) is stored in the TCM. This DTC may be in PAST or CURRENT status.

### ACTION

Follow the **SERVICE PROCEDURE** in this bulletin to:

1. Confirm the current TCM part number.
2. Reprogram the TCM, if applicable.
3. Confirm the current Shift Control Module (SCM) part number.
4. Reprogram the SCM, if applicable.

**IMPORTANT:** The purpose of **ACTION** (above) is to give you a quick idea of the work you will be performing. You **MUST** closely follow the entire **SERVICE PROCEDURE** as it contains information that is essential to successfully completing this repair.

Bulletins are intended for use by qualified technicians, not 'do-it-yourselfers'. Qualified technicians are properly trained individuals who have the equipment, tools, safety instruction, and know-how to do a job properly and safely. **NOTE:** If you believe that a described condition may apply to a particular vehicle, **DO NOT** assume that it does. See your Nissan dealer to determine if this applies to your vehicle.

## SERVICE PROCEDURE

### Confirm the Current TCM Part Number

- Using CONSULT-III, confirm the current TCM part number and write it on the repair order.
  - If it matches one of the part numbers in **Table 1**, continue to step 2 below.
  - If it does not match one of the part numbers in **Table 1**, skip to step 4 to confirm the SCM part number.

**Table 1**

MODEL	CURRENT TCM PART NUMBER: 31039 -
Rogue	6RA8B, 6RA8C, 6RA8D, 6RA8E 6RA9E

### **NOTICE**

Perform the following before starting the reprogramming procedure to prevent damage to the control unit.

- Connect the AC Adapter to the CONSULT PC.
  - Connect the CONSULT PC to the Internet via Wi-Fi or a network cable.
  - Ensure ASIST on the CONSULT PC has been synchronized (updated) to the current date and all CONSULT software updates (if any) have been installed.
  - Turn OFF all external Bluetooth® devices (e.g., cell phones, printers, etc.) within range of the CONSULT PC and the VI. If Bluetooth® signal waves are within range of the CONSULT PC or VI during reprogramming, the reprogramming may be interrupted.
  - Turn the hazard warning lamps ON.
    - Turn OFF all other vehicle electrical loads such as exterior lights, interior lights, HVAC, blower, rear defogger, audio, NAVI, seat heater, steering wheel heater, etc. If electrical loads remain ON, the TCM may be damaged.
  - Connect a battery maintainer or smart charger, set to reflash mode or a similar setting, to ensure the battery voltage stays between 12.0 V and 15.5 V.
- Reprogram the TCM.

**HINT:** If you are not familiar with the reprogramming procedure, *click here*. This will link you to the "**CONSULT REPROGRAMMING FOR ENGINE OR TRANSMISSION CONTROL MODULE (ECM OR TCM)**" general procedure.
  - After completing **Erase All DTCs**, print a copy of the CONSULT screen showing the before and after part numbers of the control unit and attach it to the repair order.
  - Select **Home** to return to the main screen.

## Confirm the Current Shift Control Module (SCM) Part Number

5. Select **Re/programming, Configuration**.

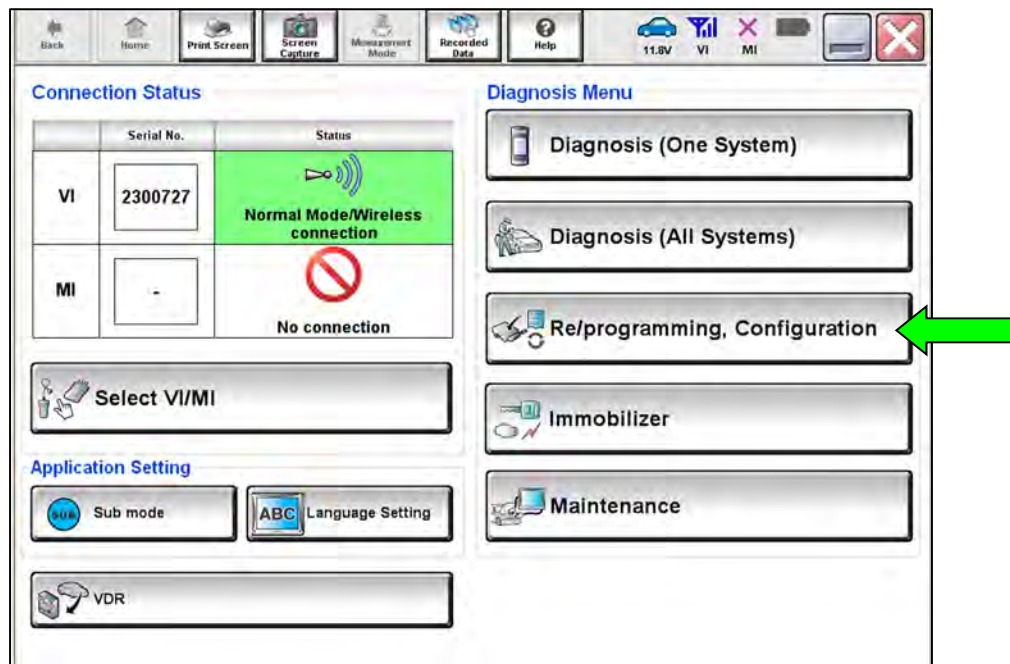


Figure 1

6. Check the box to confirm the precaution instructions have been read, and then select **Next**.

**HINT:** Use the arrows (if needed) to view and read all precautions.

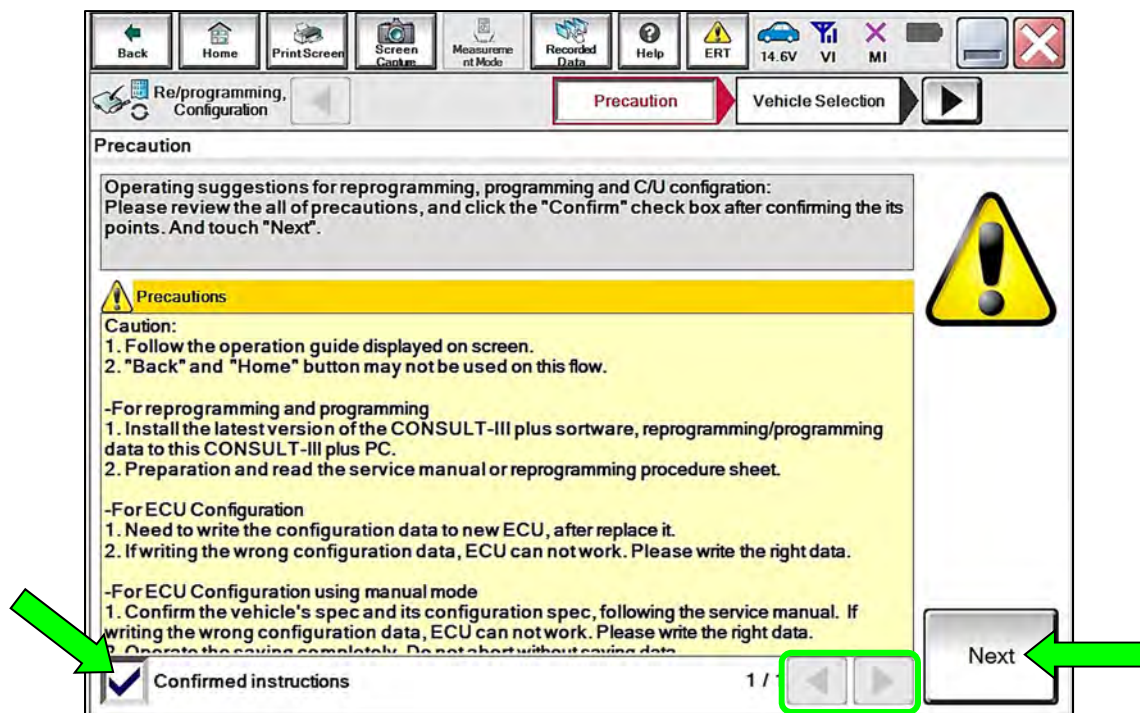


Figure 2

7. Select **Automatic Selection(VIN)**.

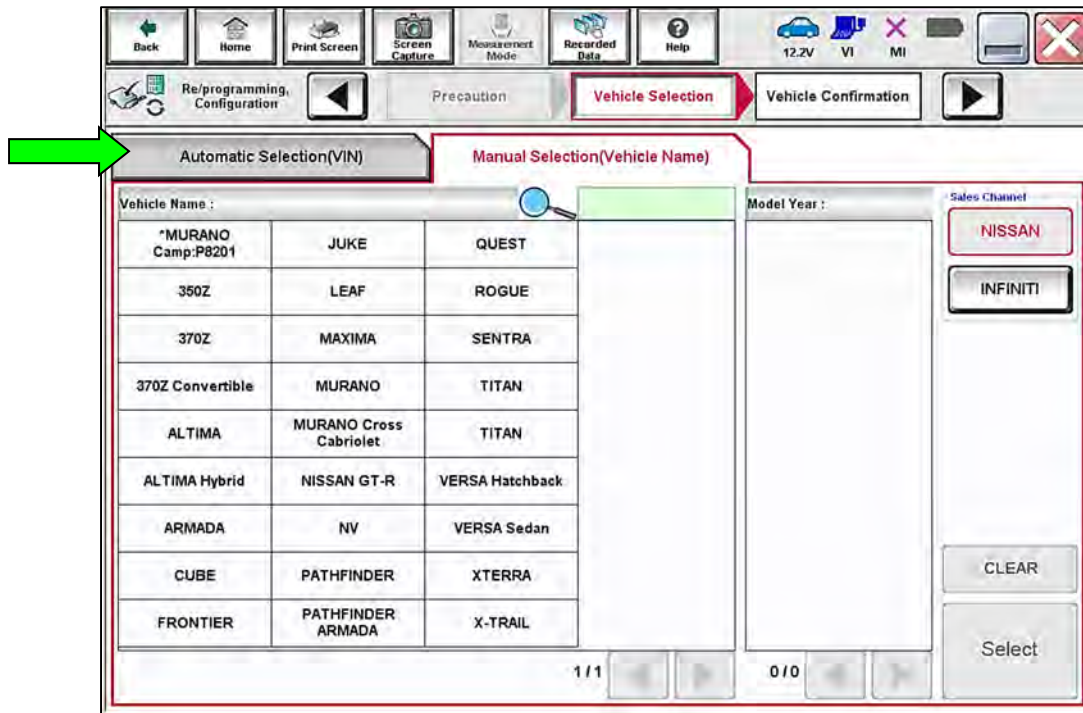


Figure 3

8. Confirm the **VIN or Chassis #** is correct, and then select **Confirm**.

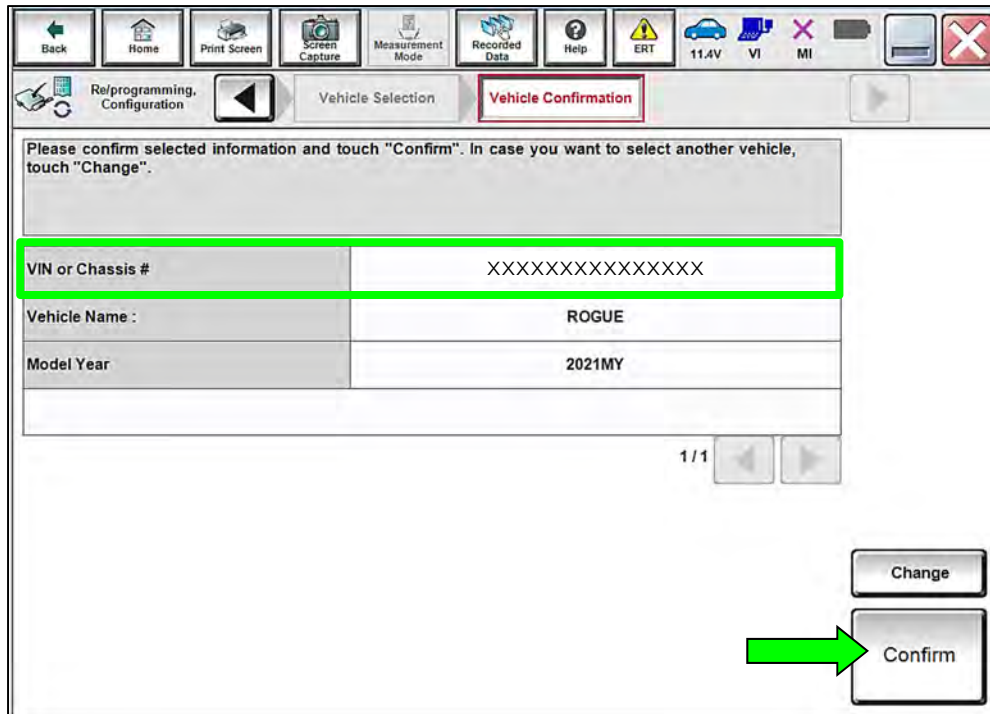


Figure 4

- Confirm the VIN is correct for the vehicle, and then select **Confirm**.

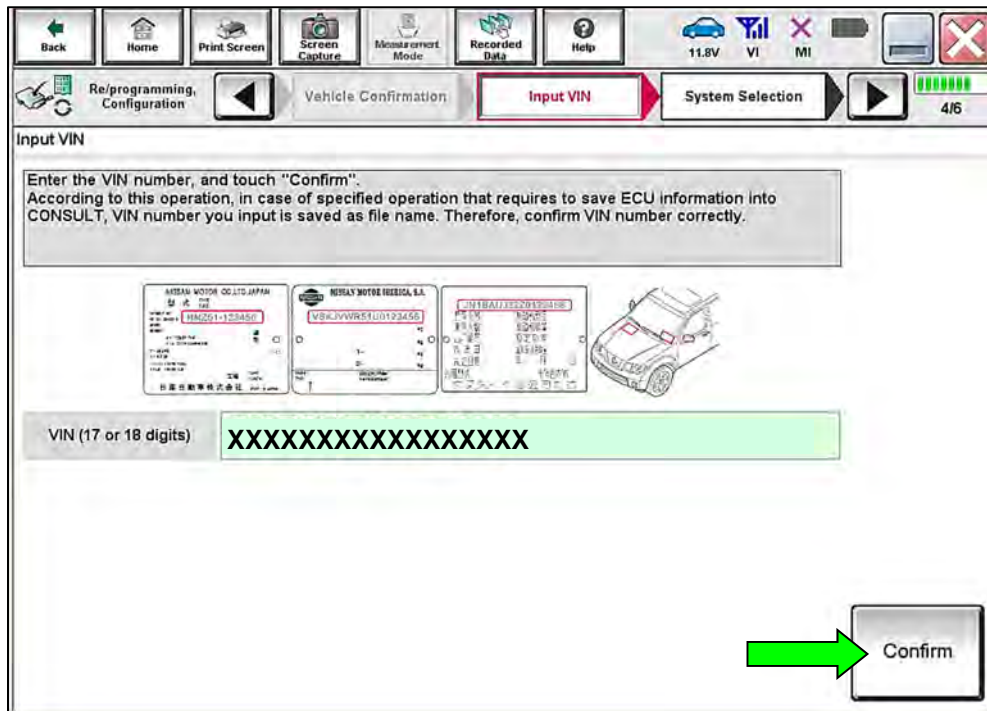


Figure 5

- Select **SHIFT**.

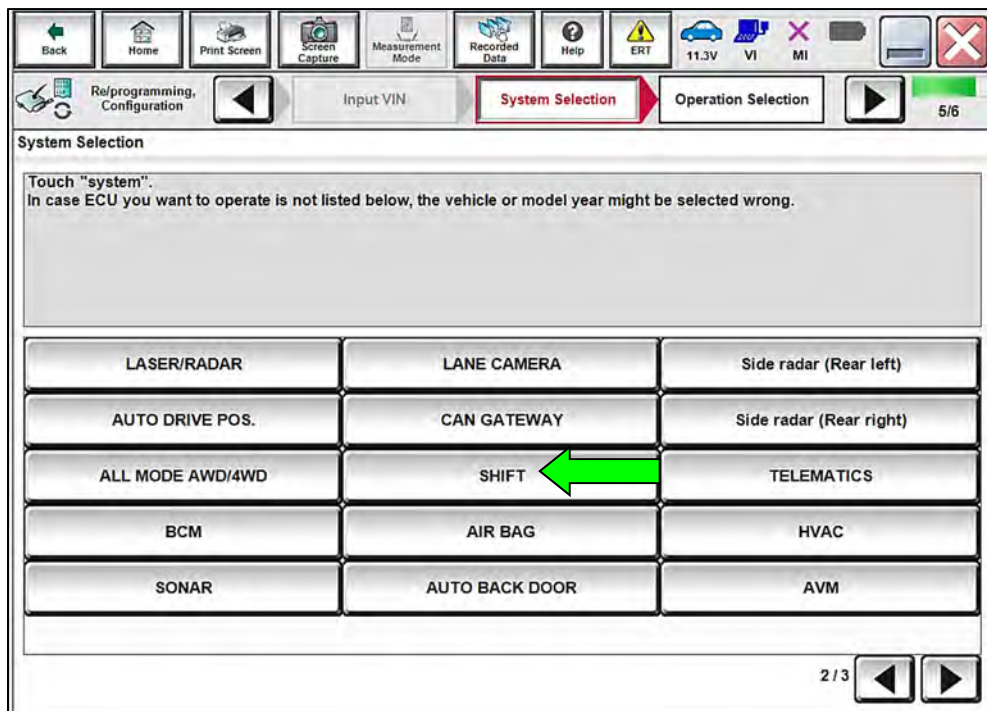


Figure 6

11. Select **Reprogramming**.

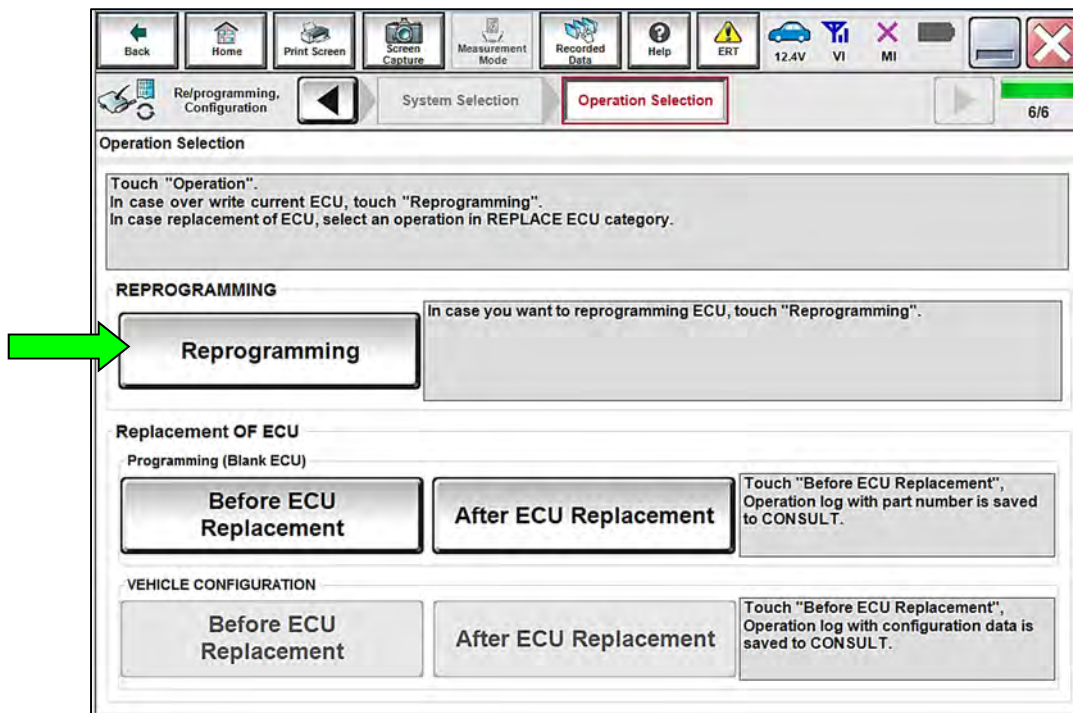


Figure 7

12. Find the **SCM Part Number** and write it on the repair order, and then select **Save**.

**HINT:** This is the current Part Number (P/N).

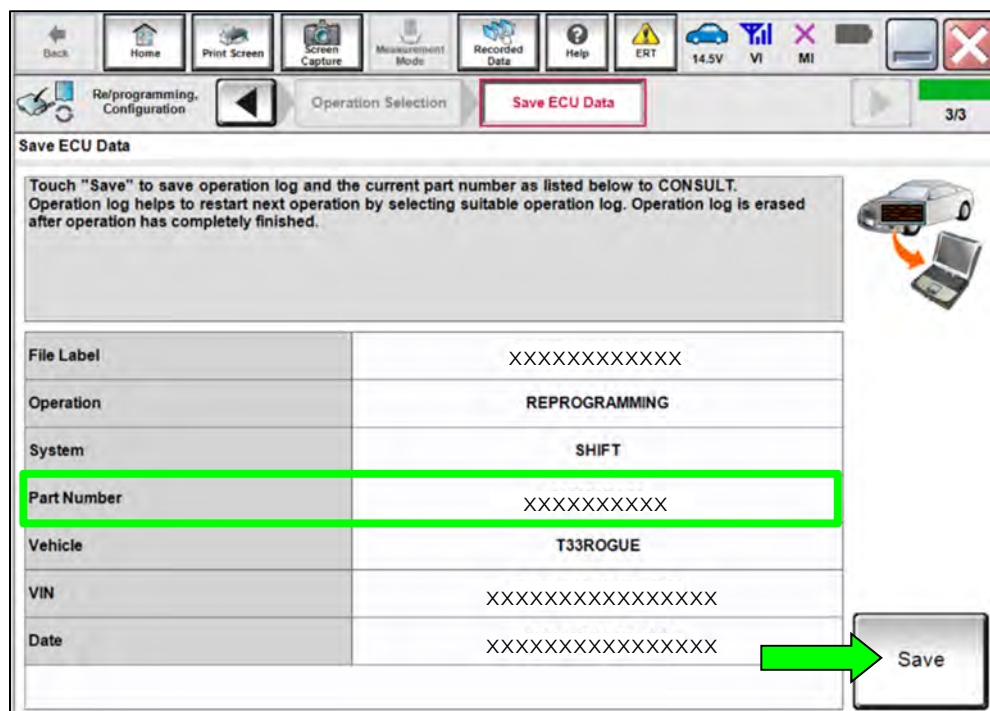


Figure 8

13. Compare the Part Number you wrote down in step 12 on page 6 to the numbers in the **CURRENT SCM PART NUMBER** column in **Table 2** below.
- If it matches one of the part numbers in **Table 2**, continue to step 14 below.
  - If it does not match one of the part numbers in **Table 2**, SCM reprogramming is not required, skip to step 31 on page 16.

**Table 2**

MODEL	CURRENT SCM PART NUMBER: 31038-
Rogue	6RA0B, 6RA0C 6RFOA

## Reprogram the SCM

14. Check the box to confirm the precaution instructions have been read, and then select **Next**.

**HINT:** Use the arrows (if needed) to view and read all precautions.

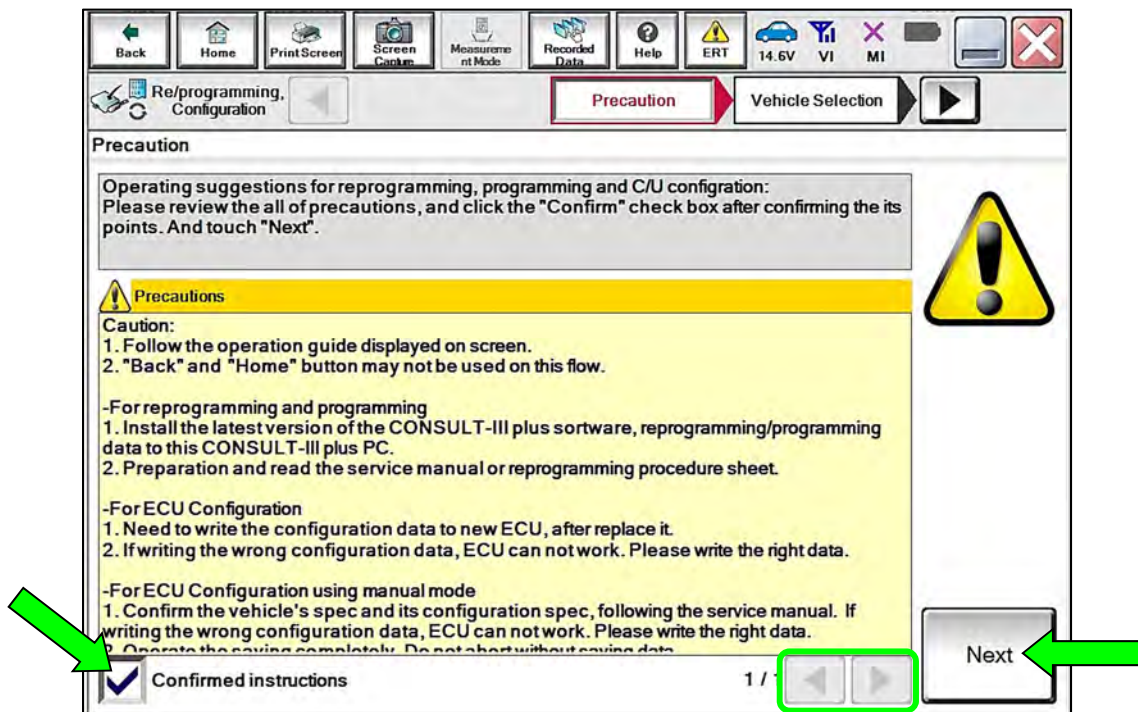


Figure 9

15. Confirm the battery charger is ON and the battery voltage is between 12.0V-15.5V, and then select **Next**.

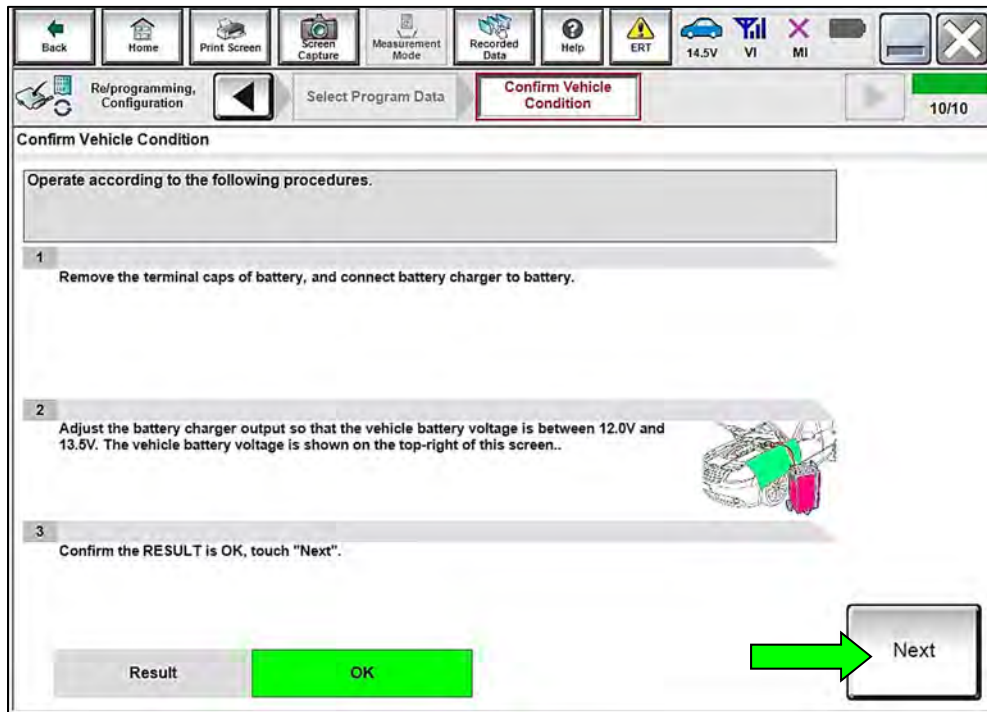


Figure 10

16. Confirm the **Judgement** for all the **Monitor Items** are "OK", and then select **Start**.

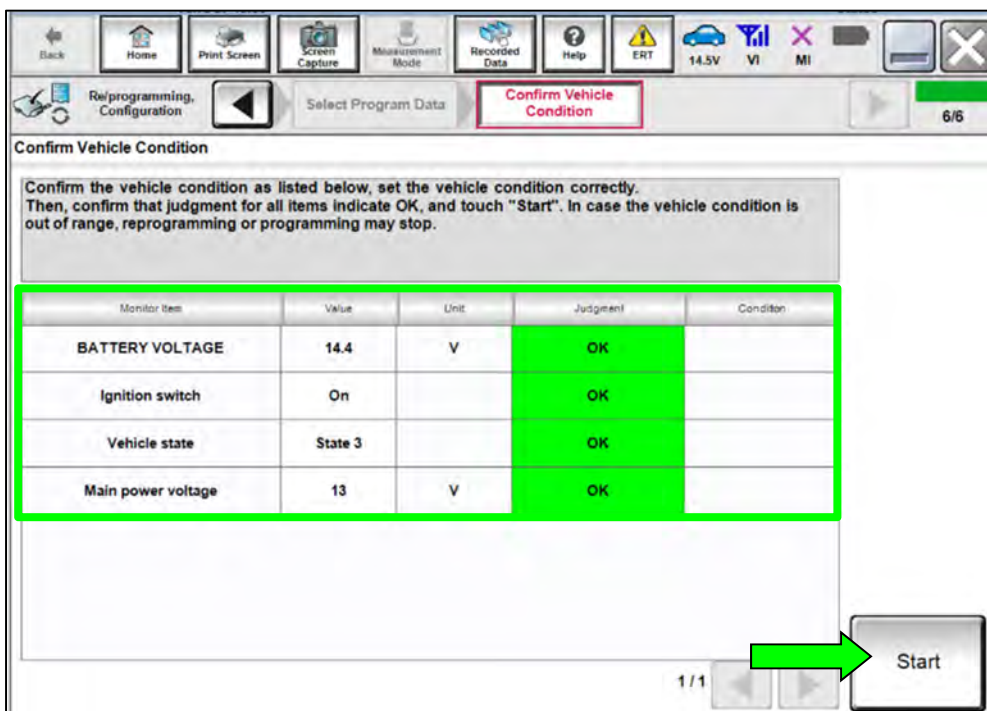


Figure 11



17. Select **USA/CANADA Dealers** from the drop down menu, and then select **OK**.

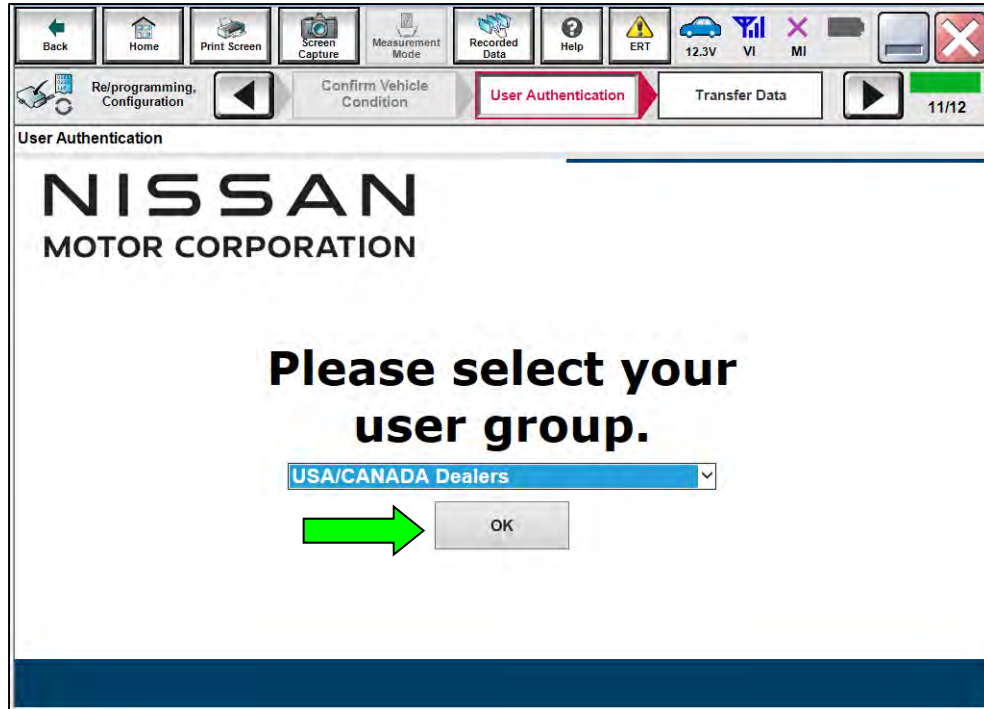


Figure 12

18. Login using your NNAnet credentials, and then select **Submit**.

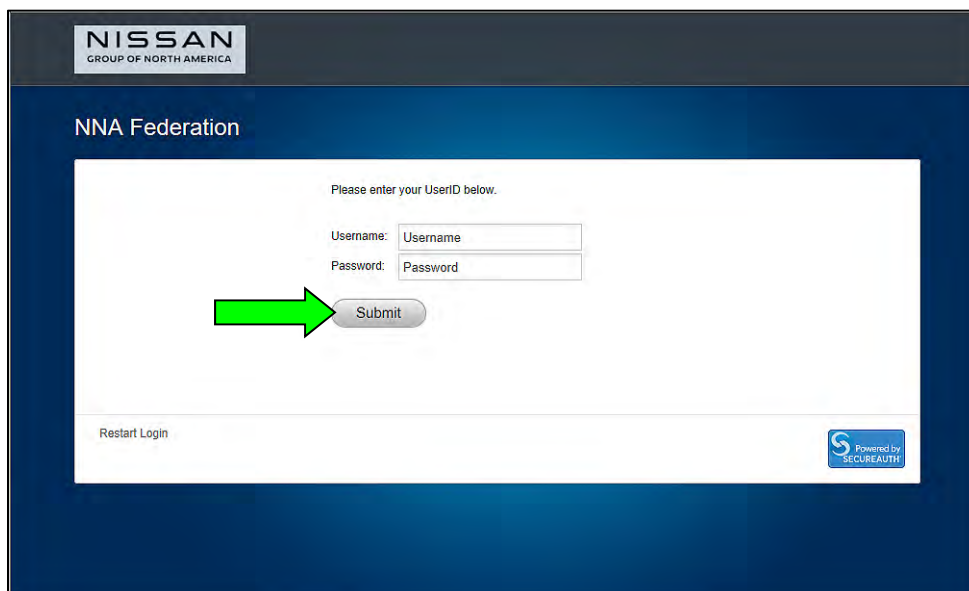


Figure 13

19. Allow **Transfer Data** to complete.

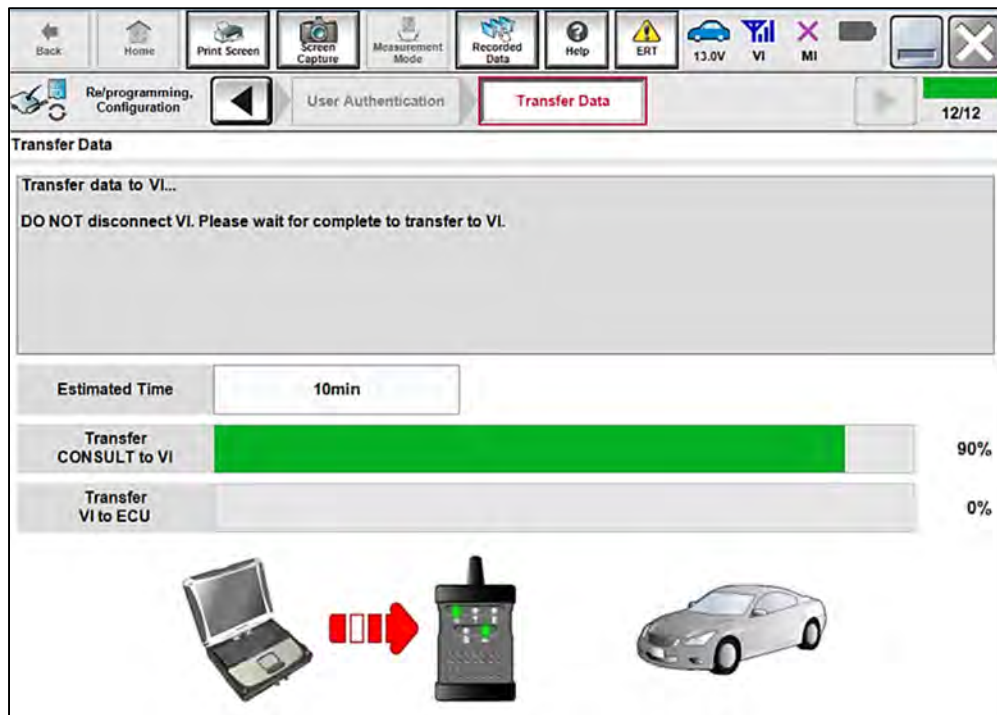


Figure 14

20. Once the reprogramming completes, select **Next**.

**HINT:**

- If the screen in Figure 15 does not display (indicating that reprogramming did not complete), refer to the information on the next page.
- Additional steps/operations are required before CONSULT will provide the final reprogramming confirmation report. Continue with the reprogramming procedure on page 12.

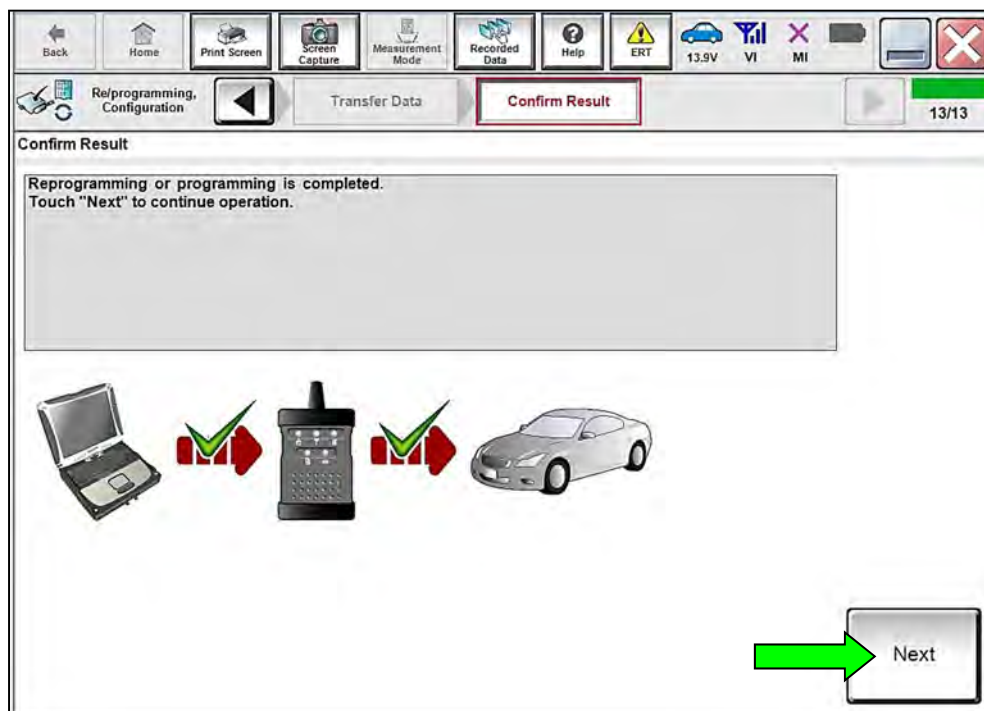


Figure 15

## SCM Recovery:

If reprogramming does not complete and the “!” symbol displays as shown in Figure 16:

- Check battery voltage (12.0 – 15.5V).
- Ignition is ON, Engine is OFF.
- External Bluetooth® devices are OFF.
- All electrical loads are OFF.
- Select **Retry** and follow the on screen instructions.

**HINT:** **Retry** may not go through on first attempt and can be selected more than once.

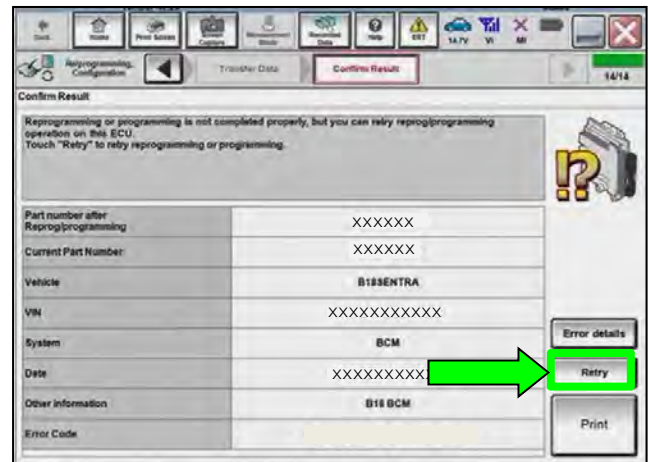


Figure 16

If reprogramming does not complete and the “X” symbol displays as shown in Figure 17:

- Do not disconnect the VI or shut down C-III plus if reprogramming does not complete.
- Check battery voltage (12.0 – 15.5V).
- CONSULT A/C adapter is plugged in.
- Ignition is ON, Engine is OFF.
- Transmission in Park.
- All C-III plus / VI cables are securely connected.
- All C-III plus updates are installed.
- Select **Home**, and then restart the reprogram procedure from the beginning.

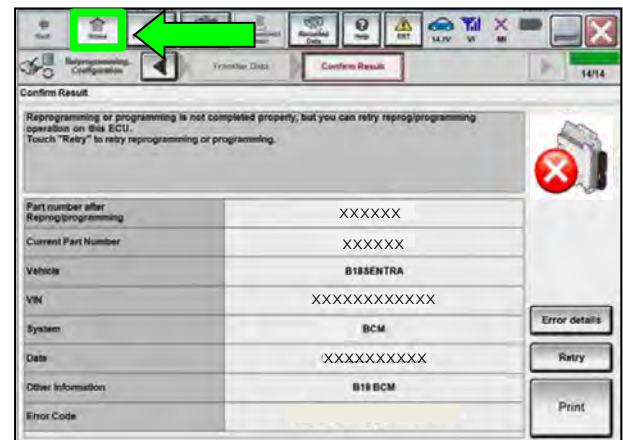


Figure 17

21. Perform **Erase All DTCs**.

a. Follow the on-screen instructions as shown in Figure 18 and Figure 19.

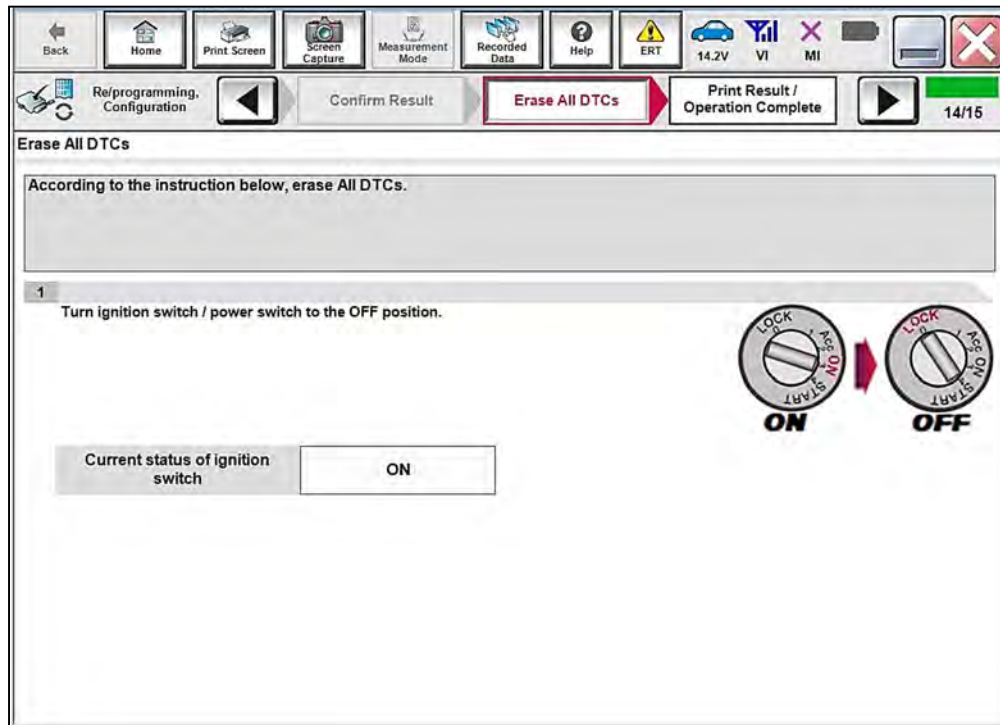


Figure 18

b. Select **Next**.

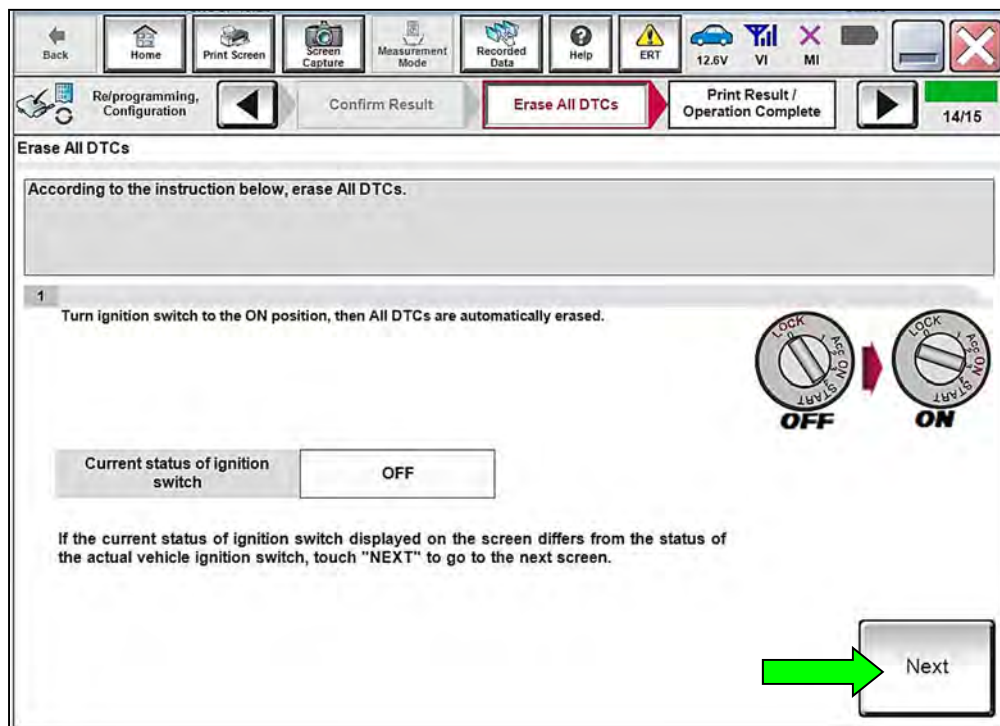


Figure 19

22. Allow **Erase All DTCs** to complete.

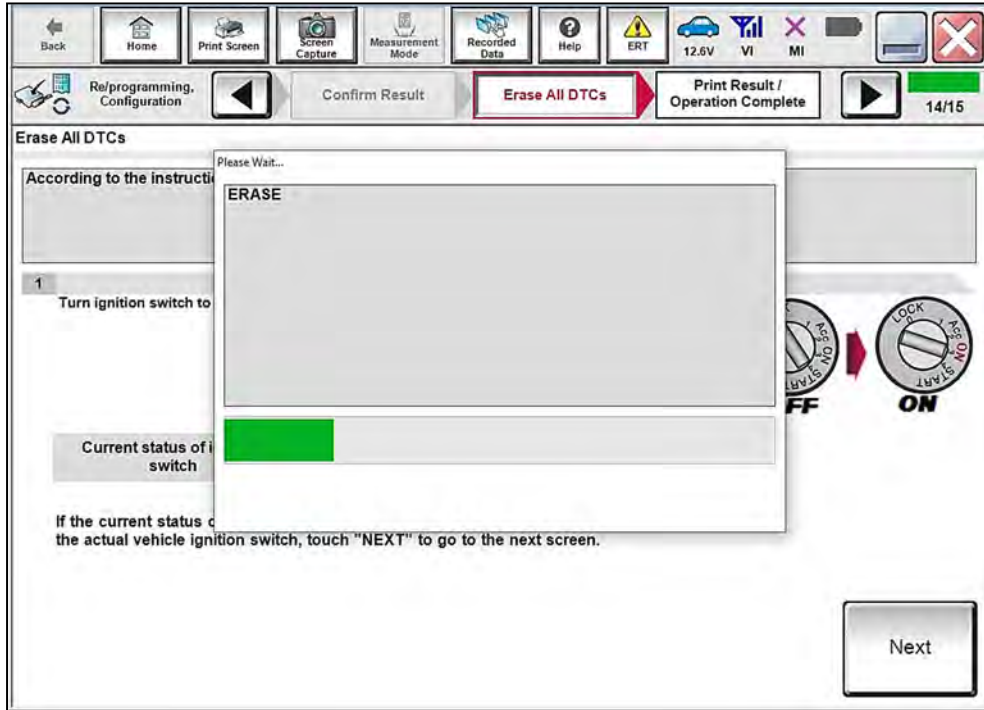


Figure 20

23. Verify the **Part number after Reprog/programming** and **Part number before Reprog/programming** are different, select **Print** and attach the reprogramming results to the repair order, and then select **Confirm**.

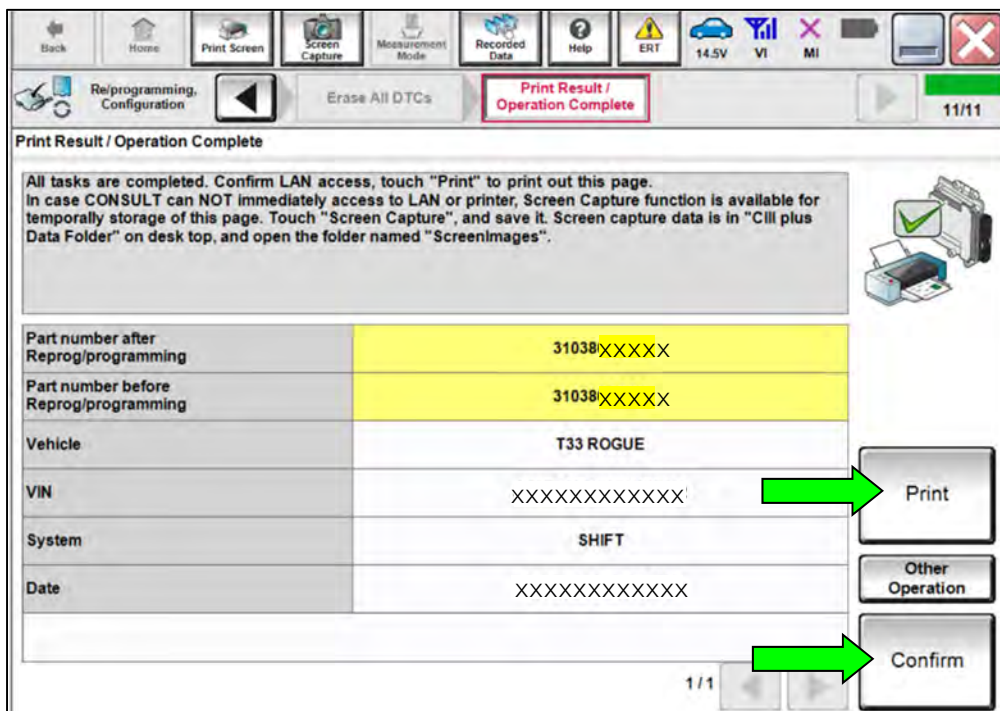


Figure 21

24. Select **Home**.

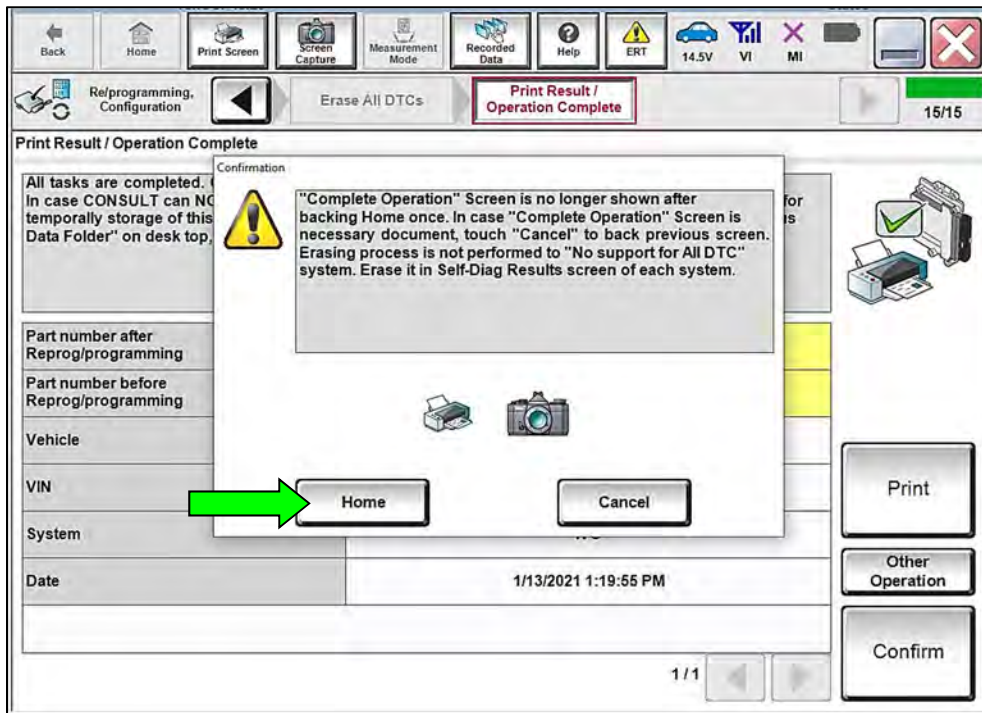


Figure 22

25. Select **Diagnosis (All Systems)**.

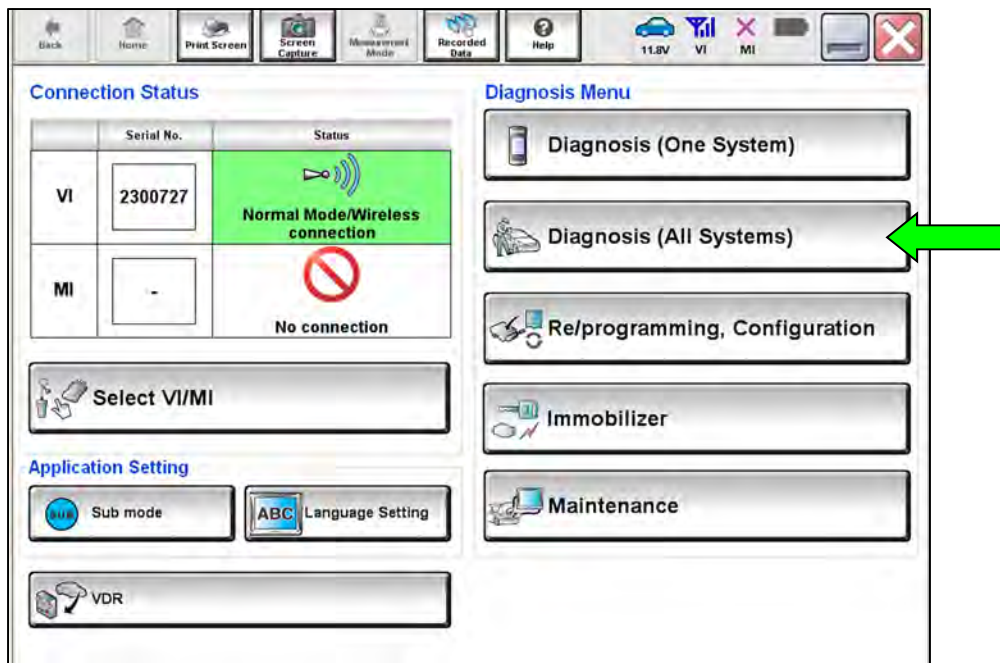


Figure 23

26. Select **TRANSMISSION**.

**HINT:** If a DTC is present, turn the ignition OFF for 10 seconds. After the 10 second wait, turn the ignition ON, and then erase the DTCs.

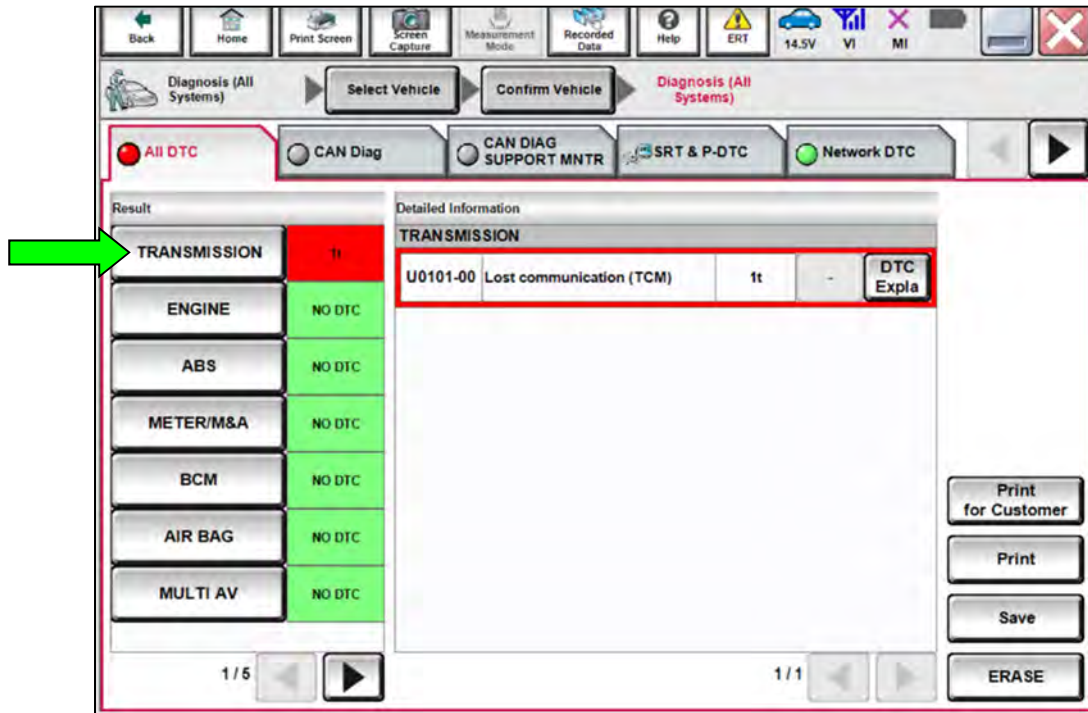


Figure 24

27. Select **Work support**, **ERASE LEARNING VALUE**, and then select **Start**.

- Follow the on-screen instructions to erase the learning values, and then select **End** to return to the **Work support** menu.

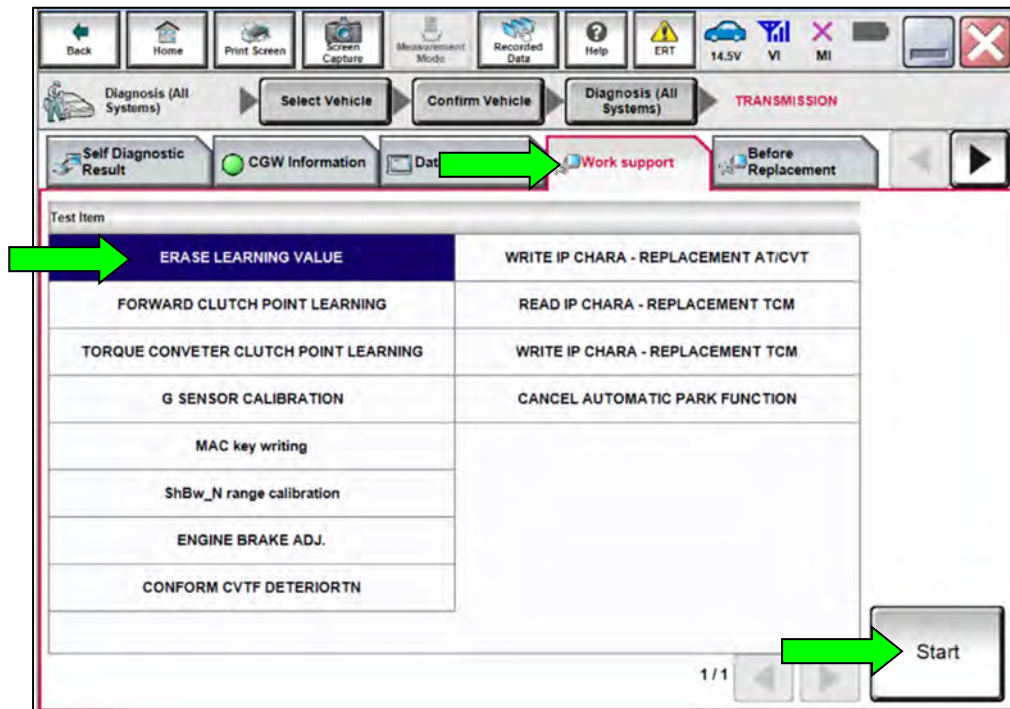


Figure 25

28. Select **FORWARD CLUTCH POINT LEARNING**, and then select **Start** (Figure 25 on page 15).

**IMPORTANT:** The following conditions must be met before proceeding with **FORWARD CLUTCH POINT LEARNING**:

- o Accelerator Pedal: Not Depressed
- o Brake Pedal: Depressed
- o Selector Level: N Position
- o Vehicle Speed: 0 mph
- o A/C Switch: OFF
- o CVT Fluid Temperature: 60-100°C (**140-212°F**)
- o Engine Coolant Temperature: 70-110°C (**158-230°F**)
- o No DTCs Detected

29. Perform **FORWARD CLUTCH POINT LEARNING** following the steps below:
- a. After meeting the conditions shown in step 28, select **Start**.
  - b. Place the gear selector into Drive and allow the learning to complete.
  - c. After learning has completed, select **End** to return to the **Work support** menu.
  - d. Select **FORWARD CLUTCH POINT LEARNING**, and then select **Start**.
  - e. Place the gear selector into Neutral, and then select **Start**.
  - f. Place the gear selector into Reverse and allow the learning to complete.
  - g. Place the gear selector into Park.
  - h. Select **End** to return to the **Work support** menu.

30. Perform **SELECT LEARNING**.

- Refer to the ESM: **TRANSMISSION & DRIVELINE > TRANSAXLE & TRANSMISSION > CVT: GE0F10C > BASIC INSPECTION > SELECT LEARNING > Work Procedure**

31. Remove the battery maintainer/smart charger.

32. Close the C-III plus application.

33. Remove the VI from the vehicle.



## CLAIMS INFORMATION

Submit a Primary Part (PP) type line claim using the following claims coding:

DESCRIPTION	PFP	OP CODE	SYM	DIA	FRT
Reprogram TCM and Shift Control Module	(1)	JX1GAA	ZE	32	0.8

- (1) Reference the electronic parts catalog and use the Transmission Control Unit (310F6-\*\*\*\*\*) as the Primary Failed Part (**PFP**).

## AMENDMENT HISTORY

PUBLISHED DATE	REFERENCE	DESCRIPTION
October 27, 2022	NTB22-093	Original bulletin published