

WNJ4 - Checking Threaded Joint for Strut and Replacing it if Necessary (Workshop Campaign)

Model Line: **Taycan (Y1A/Y1B)**

Model Year: **As of 2020 up to 2022**

Concerns: **Strut**

Information: **Due to a display error in the Parts Catalogue, there is a possibility that the wrong fastening screw on the strut was used during a workshop visit.**

If this is the case, the installation status does not meet the required specifications.

Action required: Checking threaded joint for strut and replacing it if necessary.



Information

Every vehicle is assigned **all campaign scopes**.

Depending on the result of the check, the following scopes may arise:

Scope 1: Checking threaded joint for strut

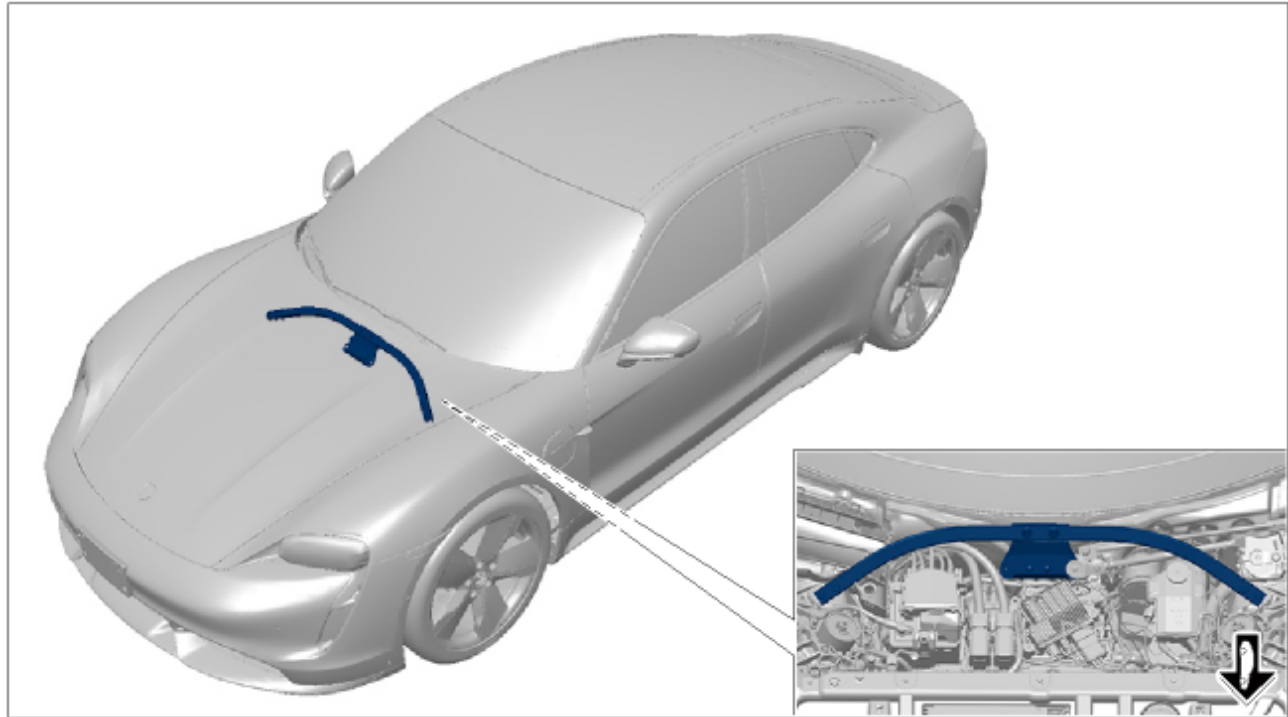
Scope 2: Checking and replacing threaded joint for strut, performing visual inspection of strut

Scope 3: Checking and replacing threaded joint for strut, performing visual inspection of strut and replacing strut

Affected Vehicles: Only vehicles assigned to the campaign (see also PCSS Vehicle Information).

Installation

Position:



Installation position of strut

Parts required

Parts Info:

Part No.	Designation	Number
Parts required for checking the screws:		
N 10261307	⇒ Hexagon nut M10	2 pieces
Additional parts required for scope 2 and scope 3:		
PAF106825	⇒ Cheese head screw M8 x 50	4 pieces
Additional parts required only for scope 3:		
V04015800CB	⇒ Dome strut firewall	1 piece

Required tools:

- Tools:
- Torque wrench, 2-10 Nm (1.5-7.5 ftlb.), e.g. **V.A.G 1783 - torque wrench, 2-10 Nm (1.5-7.5 ftlb.)** or equivalent
 - Battery charger with a current rating of **at least 90 A** and - if required - **also with a current and voltage controlled charge map** for lithium starter batteries, e.g. **VAS 5908 90A battery charger**
 - **9900 - PIWIS Tester 3**
 - Suitable puller, e.g. **VAS 6935 - pole terminal puller**

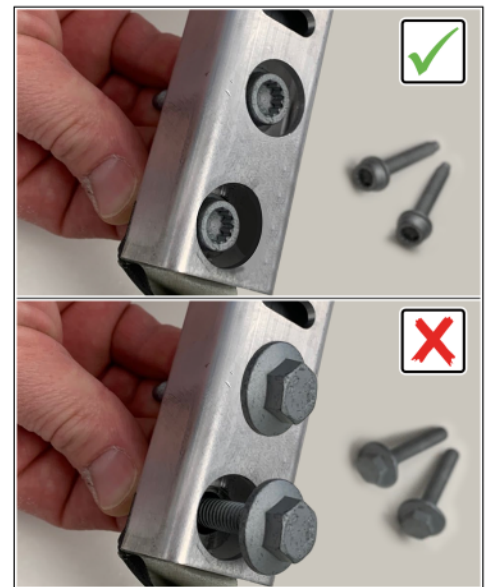
Additional tools required for scope 2 and scope 3:

- Torque wrench, 6-50 Nm (3.7-37 ftlb.) e.g. **V.A.G 1331A - torque wrench, 6-50 Nm (3.7-37 ftlb.)** or equivalent

Checking threaded joint for strut and replacing it if necessary

Work Procedure: 1 Check threaded joint for strut.

- 1.1 Remove cowl panel cover. ⇒ *Workshop Manual '508719 Removing and installing cowl panel cover'*
- 1.2 Remove air inlet housing section. For instructions, see ⇒ *Workshop Manual '408619 Removing and installing strut.'*
- 1.3 Remove cover on strut. For instructions, see ⇒ *Workshop Manual '408619 Removing and installing strut.'*
- 1.4 Check threaded joint for strut. ⇒ *Checking threaded joint for strut*



Checking threaded joint for strut

Assessment		Action
(✓)	Screws installed on the left and right are OK.	End of remedial action. Continue with Step 3.
(x)	Screws installed on the left and right are not OK.	If visual damage is found during the visual inspection, e.g. a compressed chamber of the strut, it must be replaced. To do this continue with Step 2. If no visual damage is found during the visual inspection: New screws with the part number: Screw in PAF106825 and tighten to the specified tightening torque. torque 20 Nm (14.8 ftlb.) Torque angle +90 ° ⇒ <i>Workshop Manual '408619 Remove and install strut'</i> Continue with Step 3.

- 2 Replace strut. For instructions, see ⇒ *Workshop Manual '408619 Removing and installing strut.'*
- 3 Install strut cover. For instructions, see ⇒ *Workshop Manual '408619 Removing and installing strut.'*
- 4 Install air inlet housing section. For instructions, see ⇒ *Workshop Manual '408619 Removing and installing strut.'*
- 5 Install cowl panel cover. ⇒ *Workshop Manual '508719 Removing and installing cowl panel cover'*
- 6 Enter the campaign in the Warranty and Maintenance booklet.

Warranty processing



Information

The specified labor times were determined specifically for carrying out this campaign and include all required preliminary and rework.
The working times may differ from the working times published in the Labor Operation List in PCSS.

Scope 1:

Checking threaded joint for strut

Labor time:

Checking threaded joint for strut
Includes: Removing and installing cowl panel cover

Labor time: **93 TU**

Required parts:

N 10261307	Hexagon nut M10	2 pieces
⇒ Damage code WNJ4 066 000 1		

Scope 2: **Checking and replacing threaded joint for strut, performing visual inspection of strut**

Labor time:		
Checking and replacing threaded joint for strut, performing visual inspection of strut		Labor time: 108 TU
Includes: Removing and installing cowl panel cover		
Required parts:		
N 10261307	Hexagon nut M10	2 pieces
PAF106825	Cheese head screw M8 x 50	4 pieces
⇒ Damage code WNJ4 66 000, repair code 2		

Scope 3: **Checking and replacing threaded joint for strut, performing visual inspection of strut and replacing strut**

Labor time:		
Checking and replacing threaded joint for strut, performing visual inspection of strut and replacing strut		Labor time: 121 TU
Includes: Removing and installing cowl panel cover		
Required parts:		
N 10261307	Hexagon nut M10	2 pieces
PAF106825	Cheese head screw M8 x 50	4 pieces
V04015800CB	Dome strut firewall	1 piece
⇒ Damage code WNJ4 66 000, repair code 2		

Important Notice: Technical Bulletins issued by Porsche Cars North America, Inc. are intended only for use by professional automotive technicians who have attended Porsche service training courses. They are written to inform those technicians of conditions that may occur on some Porsche vehicles, or to provide information that could assist in the proper servicing of a vehicle. Porsche special tools may be necessary in order to perform certain operations identified in these bulletins. Use of tools and procedures other than those Porsche recommends in these bulletins may be detrimental to the safe operation of your vehicle, and may endanger the people working on it. Properly trained Porsche technicians have the equipment, tools, safety instructions, and know-how to do the job properly and safely. Part numbers listed in these bulletins are for reference only. The work procedures updated electronically in the Porsche PIWIS diagnostic and testing device take precedence and, in the event of a discrepancy, the work procedures in the PIWIS Tester are the ones that must be followed.

© 2022 Porsche Cars North America, Inc.