

**TECHNICAL SERVICE BULLETIN**  
**SB-63 2022 Allegro Bay 38 AB Water Tanks Heating Pad**

October 4, 2022

Dealers,

It has come to our attention that on certain 2022 Allegro Bays, floor plan 38 AB, the water tank heating pad may not be hooked up.

To correct this issue, we are asking owners to arrange to take their RV into a service center or dealer of their choice to connect the 12v breaker power to water tank heat pad. This repair takes 15 minutes and will be completed at no charge to the owner of the RV. Tiffin will not pay over the allowed time unless you, the repair facility receives a prior authorization.

If you have any questions about this notice, please contact the Tiffin Service Department at [service@tiffinmotorhomes.com](mailto:service@tiffinmotorhomes.com) or call Service at 256-356-0261.

To view work instructions, please go to [tiffinmotorhomes.com](http://tiffinmotorhomes.com) chose "Dealer Login", and click on "Flat Rate Manual" and choose SERVICE BULLETIN for Model and Section, scroll down to the Service Bulletin number for the service bulletin you are looking for and choose "Show Files" and then download the work instructions.

Thank you,

Tiffin Motorhomes

## Technical Service Bulletin Inspection & Repair Instructions

**Tiffin Motorhomes Technical Service Bulletin # SB-63**

**Models Involved:** 2022 Allegro Bay 38AB

**Purpose:** Provide instructions for connecting the 12v breaker power to water tank heat pad

### TOOLS NEEDED:

T20 Torque bit & driver



### PARTS NEEDED:

1 of 15932, 12-gauge filled butt connector

1 of 15922, ring terminal with a 3/16 hole

1 of 1348, 12-gauge wire – optional, 2 ft



### **FLAT RATE CODE & TIME ALLOWED:**

*When filing the warranty claim for payment, please use the following flat rate codes and times.*

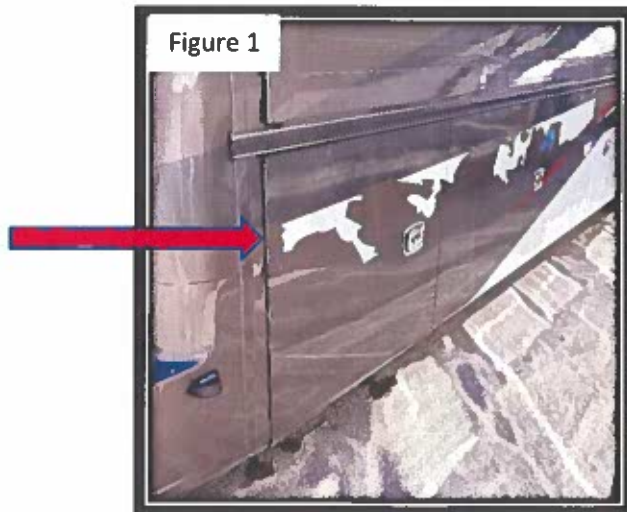
**0.25 hours - BY9963SB00**

### **Notes for Repair:**

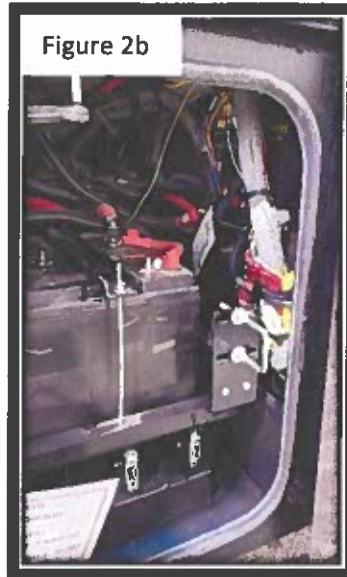
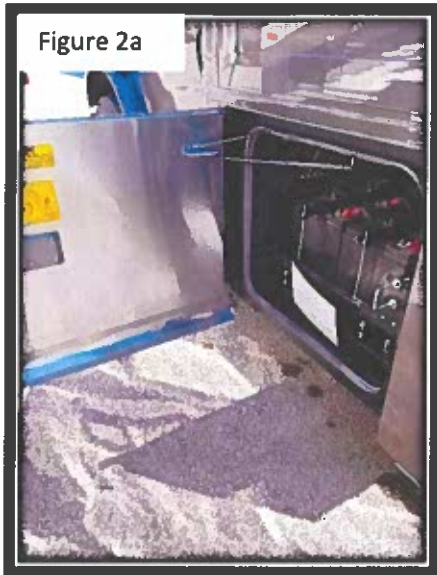
1. Breaker screws need to be torqued to 15 in pounds
2. Strip wire to specified length depending on splice manufactures requirements

### **Inspection Procedure:**

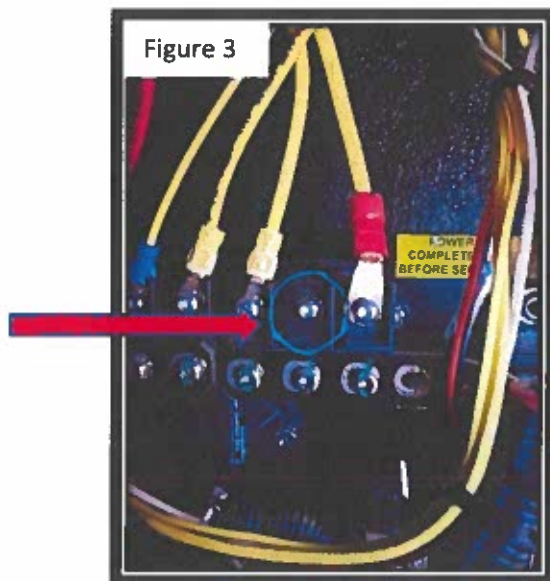
1. Open driver side compartment #1 (Figure 1) below to access backside of DCD board



2. The DCD board will be located on the right side of compartment #1, show in Figure 2a & 2b.

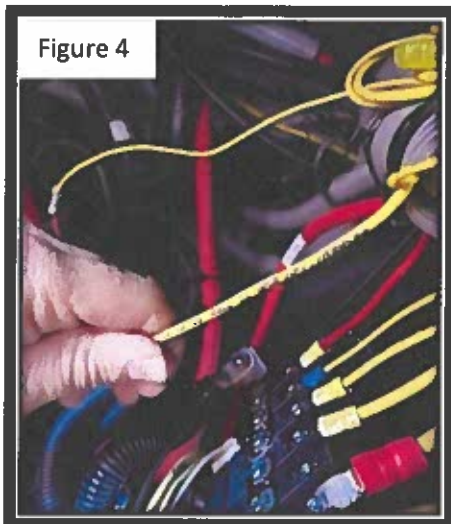


3. The tank heat wire should be located on this breaker spot circled the Figure 3 below, if the wire is installed, no repair is needed. Please file a claim to Tiffin Motorhomes using the code above.

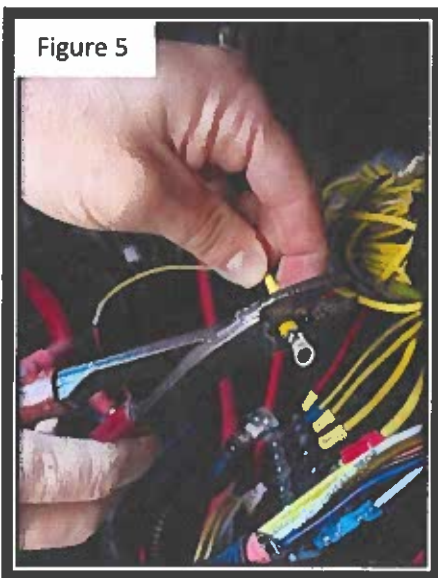


## **REPAIR PROCEDURES:**

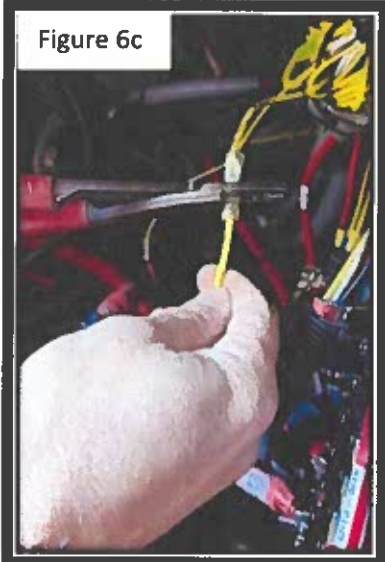
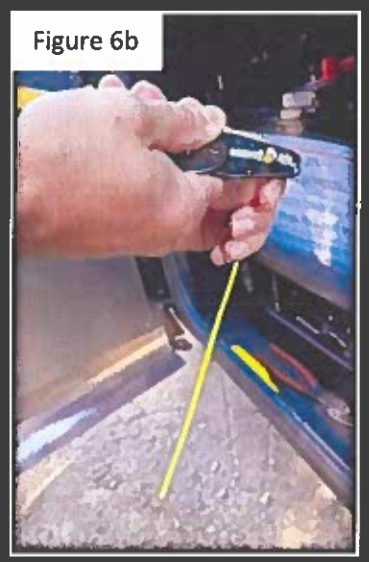
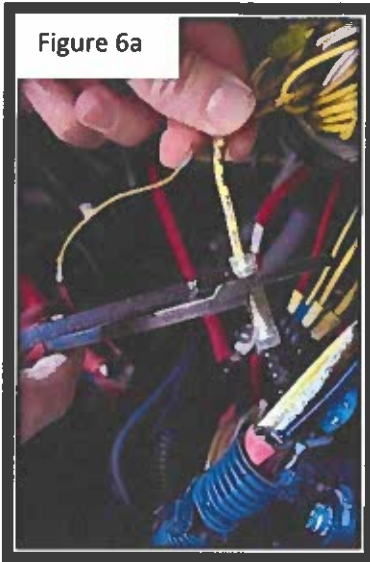
1. Locate the wire, "PWR TO TANK HEAT" will be printed on the wire, shown in Figure 4.



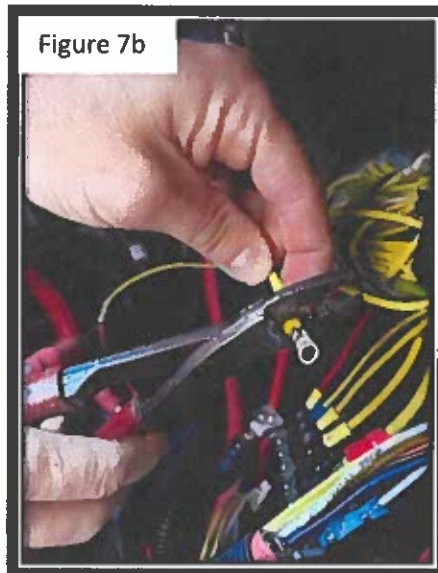
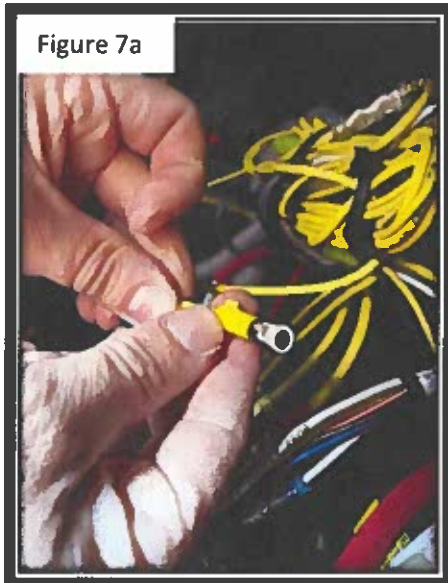
2. If the "PWR TO TANK HEAT" wire is long enough to connect to the DCD board, crimp ring terminal onto wire (Figure 5) and skip to step 5.



3. If the "PWR TO TANK HEAT" wire is not long enough to connect to the DCD board, strip wire and crimp on the butt connector. Strip the length of 12-gauge wire and crimp it on the other side of the butt connector that you put on the "PWR TO TANK HEAT" wire as shown in Figures 6a, 6b & 6c.



4. Cut 12-gauge wire to the appropriate length. Strip end of wire and place the ring terminal onto the wire then crimp as shown in Figure 7a & 7b.



5. Use T20 torque bit to loosen screw as shown in Figure 8.



6. Place ring terminal on screw and tighten screw back down. Be careful not to cross thread and make sure the screw is torqued to 15in pounds as shown in Figure 9.

