



**IMPORTANT SERVICE  
INFORMATION FOR:**

- ✓ SERVICE MANAGER
- ✓ SERVICE ADVISOR
- ✓ TECHNICIAN
- ✓ PARTS DEPARTMENT
- ✓ WARRANTY PERSONNEL

BULLETIN NUMBER:  
**IB22-N-001**

ISSUE DATE:  
**OCTOBER 2022**

GROUP:  
**ELECTRICAL**

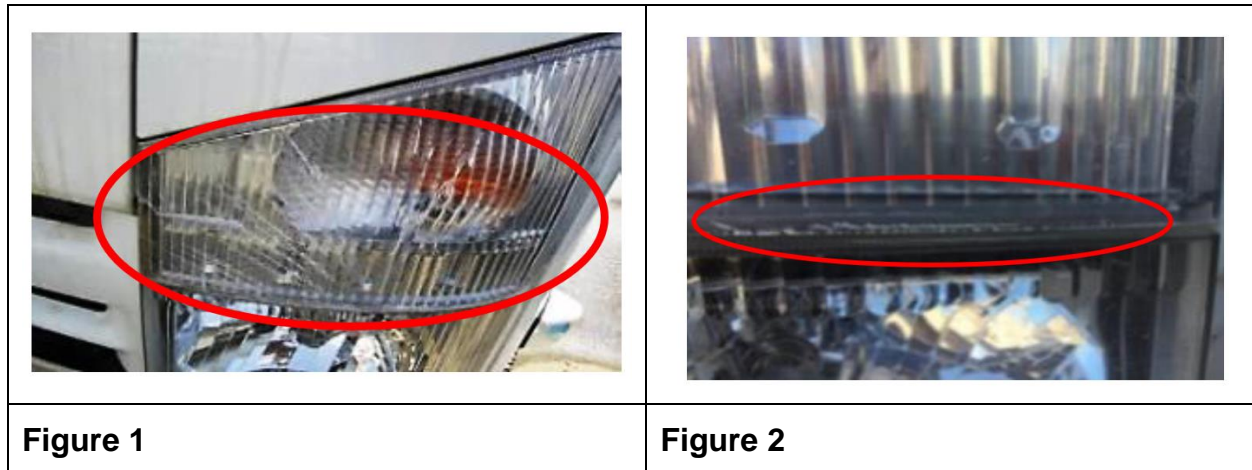
**PROPER CARE OF TURN SIGNAL LENSES**

**AFFECTED VEHICLES**

- 2011MY to Current Isuzu Vehicles

**INFORMATION**

We have received reports of the front turn signal lenses cracking on Isuzu vehicles. (See Figures 1 and 2.)



These lenses are cracking from the effects of being washed with alkaline detergents. Alkaline detergents are typically used in industrial settings and are reactive with the paint, metals, and other materials used to make up the exterior components of Isuzu vehicles.

Isuzu recommends that only neutral detergents be used when washing Isuzu vehicles. However, if alkaline detergents are used to wash an Isuzu vehicle, it is crucial that all traces of the detergent are rinsed away with water or wiped off as necessary. Allowing alkaline detergent to dry on the turn signal lenses will cause them to crack.

Each Isuzu vehicle is originally equipped with an Owner's Manual that includes guidelines for the proper exterior maintenance of the vehicle. The following guidelines are typical of those found in an Isuzu Owner's Manual concerning the use of detergents on a vehicle's exterior:

- Ensure that all detergent is fully washed and wiped away. Particularly in the case of strong alkaline detergents (typically those for industrial uses), there is a danger that hairline cracks can develop in lighting-cluster lenses if the vehicle is operated without detergent being fully wiped away. Always read the detergent manufacturer's instructions carefully before use.