



# TECHNICAL SERVICE BULLETIN

## Various Concerns With The Active Exhaust System

**22-2282**  
03 October 2022

This bulletin supersedes 22-2153.

### Model:

<b>Ford</b> 2018-2022 Mustang	non-Shelby GT350
----------------------------------	------------------

### Summary

This article supersedes TSB 22-2153 to update the vehicle models affected and part list.

**Issue:** Some 2018-2022 Mustang vehicles (non-Shelby GT350) may exhibit various concerns with the active exhaust system. These may include Drive Mode Not Available or Exhaust Mode Not Available messages, and/or illuminated malfunction indicator lamp (MIL) with diagnostics trouble codes (DTCs) P26C5, P26C6, P26FE, P2BF9, P2BFB, P26C7, P2BF5, P2BF8, P2BFD and/or P2BFA. This may be due to an improperly seated exhaust system. To correct the condition, follow the Service Procedure to diagnose the tailpipe actuator.

**Action:** Follow the Service Procedure to correct the condition on vehicles that meet all of the following criteria:

- 2018-2022 Mustang (non-Shelby GT350)
- Exhibit concerns with the active exhaust system, including but not limited to:
  - Drive Mode Not Available message in the instrument panel cluster (IPC)
  - Exhaust Mode Not Available message in the IPC
  - Illuminated MIL with DTCs P26C5, P26C6, P26FE, P2BF9, P2BFB, P26C7, P2BF5, P2BF8, P2BFD and/or P2BFA

### Parts

Service Part Number	Quantity	Description	Unit of Issue	Piece Quantity
W520111-S424	1	Exhaust Actuator Nuts	4	3
W711687-S300	1	Rear Underbody Shield Tree Fastener	4	2
W718128-S417	2	Rear Underbody Shield Push Pin Fastener	4	6

### Parts

#### Parts To Inspect And Replace Only If Necessary

Service Part Number	Quantity	Description	Unit of Issue	Piece Quantity
JR3Z-14A411-G	If Needed	Exhaust Actuator Harness - GT500/Mach 1	1	1
JR3Z-14A411-H	If Needed	Exhaust Actuator Harness - Mustang 2.3L/5.0L	1	1
JR3Z-6554-A	If Needed	Exhaust Actuator Service Kit	1	1
KR3Z-5230-P	If Needed	Muffler And Tailpipe Assembly - GT500	1	1
JR3Z-5230-FC	If Needed	Muffler And Tailpipe Assembly - 5.0L GT	1	1
KR3Z-5230-H	If Needed	Muffler And Tailpipe Assembly - 2.3L	1	1
KR3Z-5230-M	If Needed	Muffler And Tailpipe Assembly - 5.0L BULLITT	1	1
MR3Z-5230-C	If Needed	Muffler And Tailpipe Assembly - 5.0L Mach 1 (A)	1	1
MR3Z-5230-E	If Needed	Muffler And Tailpipe Assembly - 5.0L Mach 1 (B)	1	1
BR3Z-5A231-B	If Needed	Exhaust Clamp - 2.3	1	2
FR3Z-5A231-A	If Needed	Exhaust Clamp - 5.0 (All Variants)	2	1

Quantity refers to the amount of the service part number required to repair the vehicle.

Unit of Issue refers to the number of individual pieces included in a service part number package.

Piece Quantity refers to the total number of individual pieces required to repair the vehicle.

If Needed indicates the part is not mandatory.

**Warranty Status:** Eligible under provisions of New Vehicle Limited Warranty (NVLW)/Emissions Warranty/Service Part Warranty (SPW)/Special Service Part (SSP)/Extended Service Plan (ESP) coverage. Limits/policies/prior approvals are not altered by a TSB. NVLW/Emissions Warranty/SPW/SSP/ESP coverage limits are determined by the identified causal part and verified using the OASIS part coverage tool.

### Labor Times

Description	Operation No.	Time
2018-2022 Mustang: Repair Active Exhaust Concerns Following The Service Procedure	MT222282	Actual Time

### Repair/Claim Coding

Causal Part:	5230
Condition Code:	07

### Service Procedure

- Are DTCs P26FE or P2BFB present?
  - Yes - proceed to Step 2.
  - No - proceed to Step 5.
- Using the appropriate Ford diagnostic scan tool, access datalogger, and view the PCM parameter identifications (PIDs). Monitor the EFCV\_A\_MON\_STAT PID while active commanding the EFCV\_A\_CMD PID. Open the tailpipe actuator in 10% increments until it has reached 100% (fully open). Close the tailpipe actuator in 10% increments until it has reached 0% (fully closed). Does the EVCA\_A\_MON\_STAT PID display a mechanical fault at any point?
  - Yes - proceed to Step 3.
  - No - proceed to Step 5.
- Remove the exhaust actuator and inspect for physical binding and/or blockage and repair as necessary. Refer to Workshop Manual (WSM), Section 309-00C.
- Is the concern still present?
  - Yes - proceed to Step 5.
  - No - repair is complete.
- Inspect the muffler and tailpipe assembly and both catalytic converters for proper positioning in the exhaust clamps which secure them together. Make sure the exhaust clamp locking tab is fully engaged to the catalytic converters (Refer to Figure 1). Make sure the knurled/ridge area of the muffler and tailpipe assembly are covered by the exhaust clamps (Refer to Figures 2-3). Adjustments can be made by loosening the exhaust clamps and repositioning the muffler and tailpipe assembly. (Figures 1-3)

Figure 1 - Exhaust clamp locking tabs

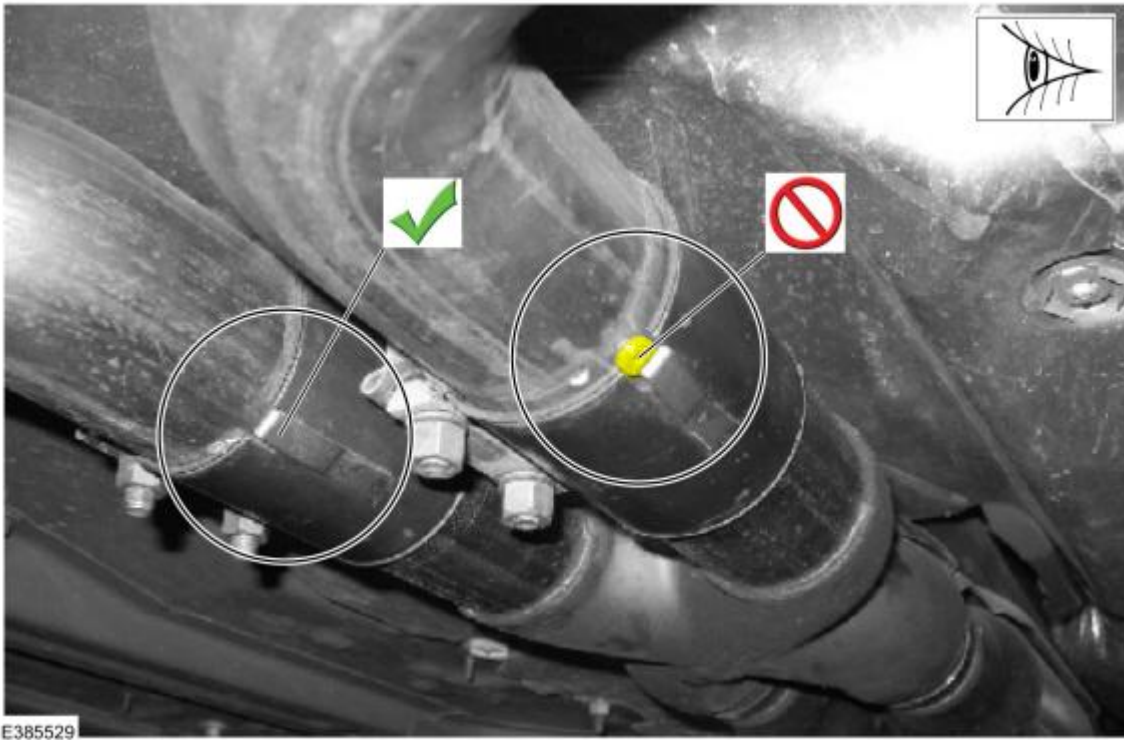


Figure 2 - Non-GT500 exhaust with ridge

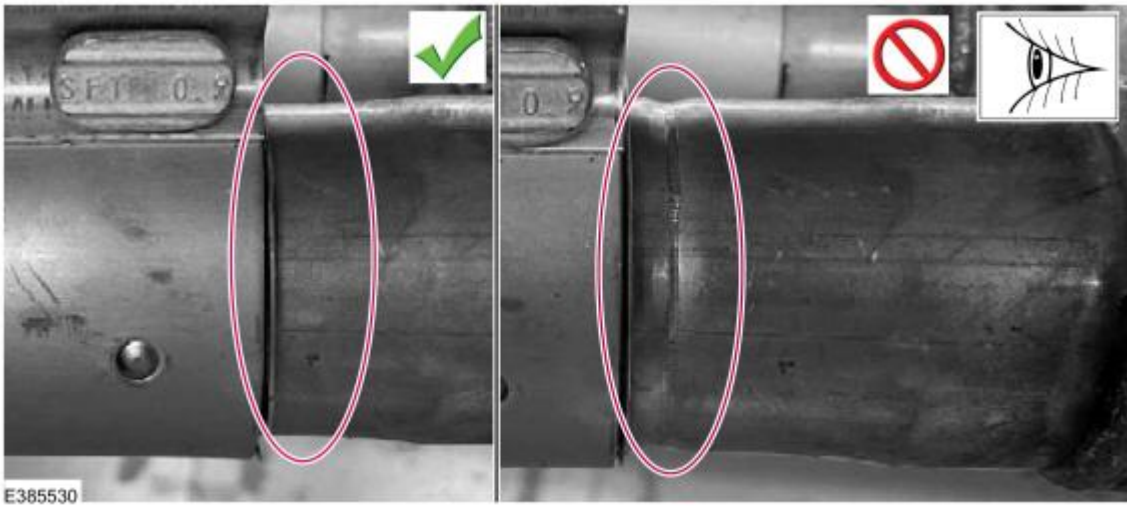
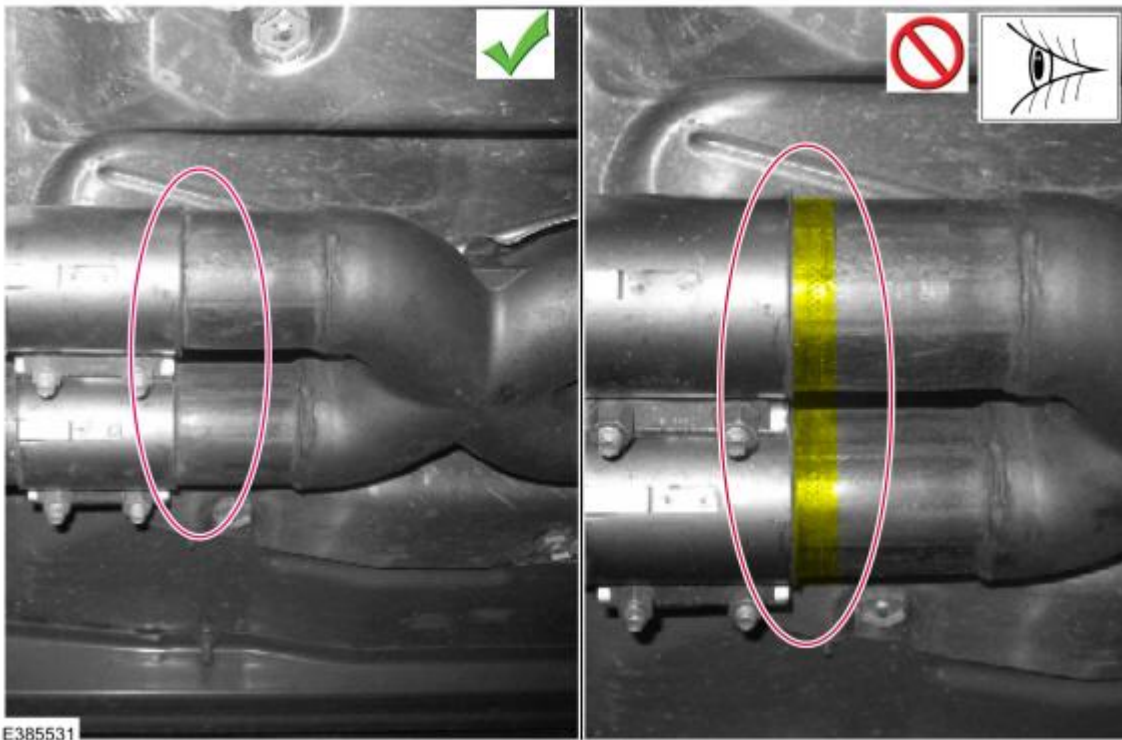
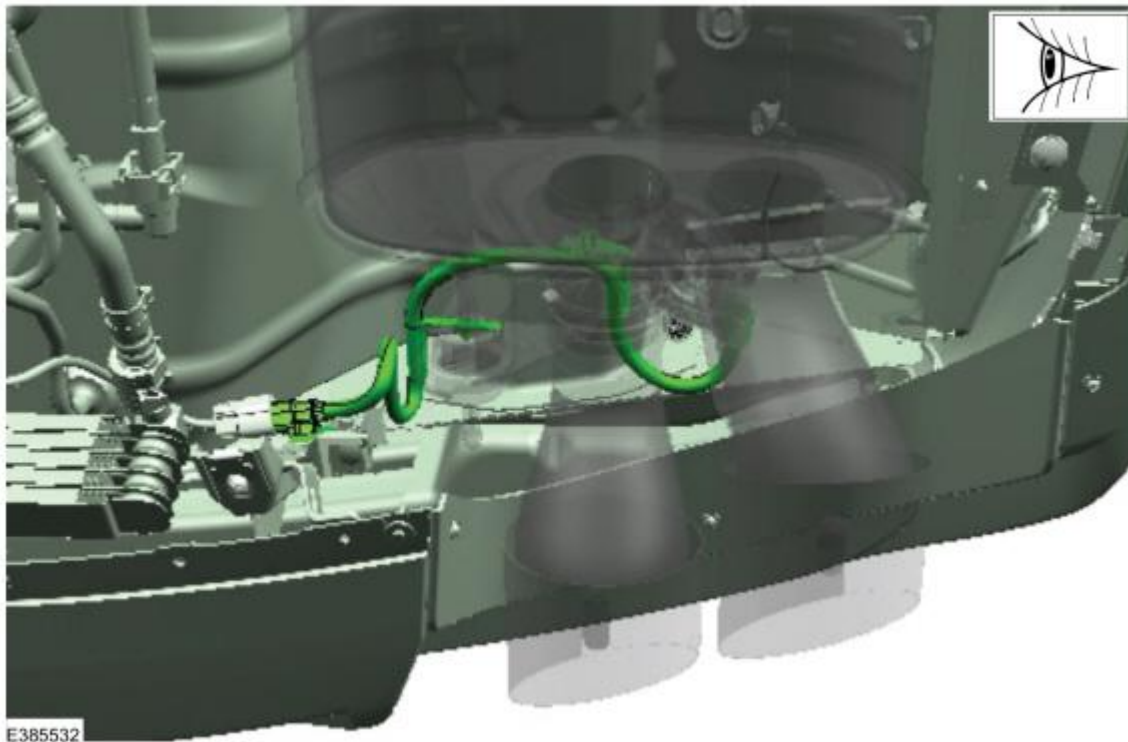


Figure 3 - GT500 exhaust with knurled area



6. Inspect the exhaust actuator wiring harness for signs of damage. If damage is found, replace the exhaust actuator wiring harness (service base part number: 14A411). (Figure 4)

Figure 4 - GT500 shown, other vehicles similar



7. If the concern persists, continue with normal diagnostics found in WSM, Section 309-00.

and Extended Service Plan documentation determine Warranty and/or Extended Service Plan coverage unless stated otherwise in the TSB article. The information in this Technical Service Bulletin (TSB) was current at the time of printing. Ford Motor Company reserves the right to supersede this information with updates. The most recent information is available through Ford Motor Company's on-line technical resources.