



STAR ONLINE PUBLICATION



Case Number: S2208000145

Release Date: August 2022

Symptom/Vehicle Issue: Security Lamp Is Flashing on The Cluster Display

Customer Complaint/Technician Observation: Owner complains of a security lamp flashing on the cluster with the key off. Technician observed the same, lamp does stop flashing when the vehicle is started.



Discussion: Characteristics of the security lamp

Operation: The engine may not start, and warning light may illuminate or flash if the key fob is placed in an area difficult for the system to detect the signal, such as on the instrument panel. Move the key fob to a location within the signal range, place the ignition in the OFF position, and restart the engine.

Note: Signals from a TV, radio station, transceiver, or mobile telephone could interfere with your immobilizer system. If you are using the proper key fob and the engine fails to start with a check engine warning lamp, check for Diagnostic Trouble Codes (DTC's).

Arming

The system is armed when the ignition is cycled from the ON to OFF position. The warning light in the instrument cluster **flashes every two seconds** until the system is disarmed with a **recognized valid** programmed key. See pg2, LF antenna signal circuits.

Disarming

The system is **disarmed** when the ignition is placed in the ON position with the correct programmed key fob signal. The warning light illuminates for about **three seconds** and then **turns off**. If the engine does not start with the correct key fob, and the warning light remains illuminated or flashing, try the following:

Make sure the key fob is within the operational range for signal transmission. Cycle the ignition off, and then restart the engine. If the engine does not start after three or more tries, use the scan tool to identify any related DTC's to repair the vehicle.

Pg 1

This document does not authorize warranty repairs. This communication documents a record of past experiences. STAR Online does not provide any conclusions about what is wrong with the vehicle. Rather, it captures all previous cases known that appear to be similar or related to the vehicle symptom / condition. You are the expert, and you are responsible for deciding on the appropriate course of action.

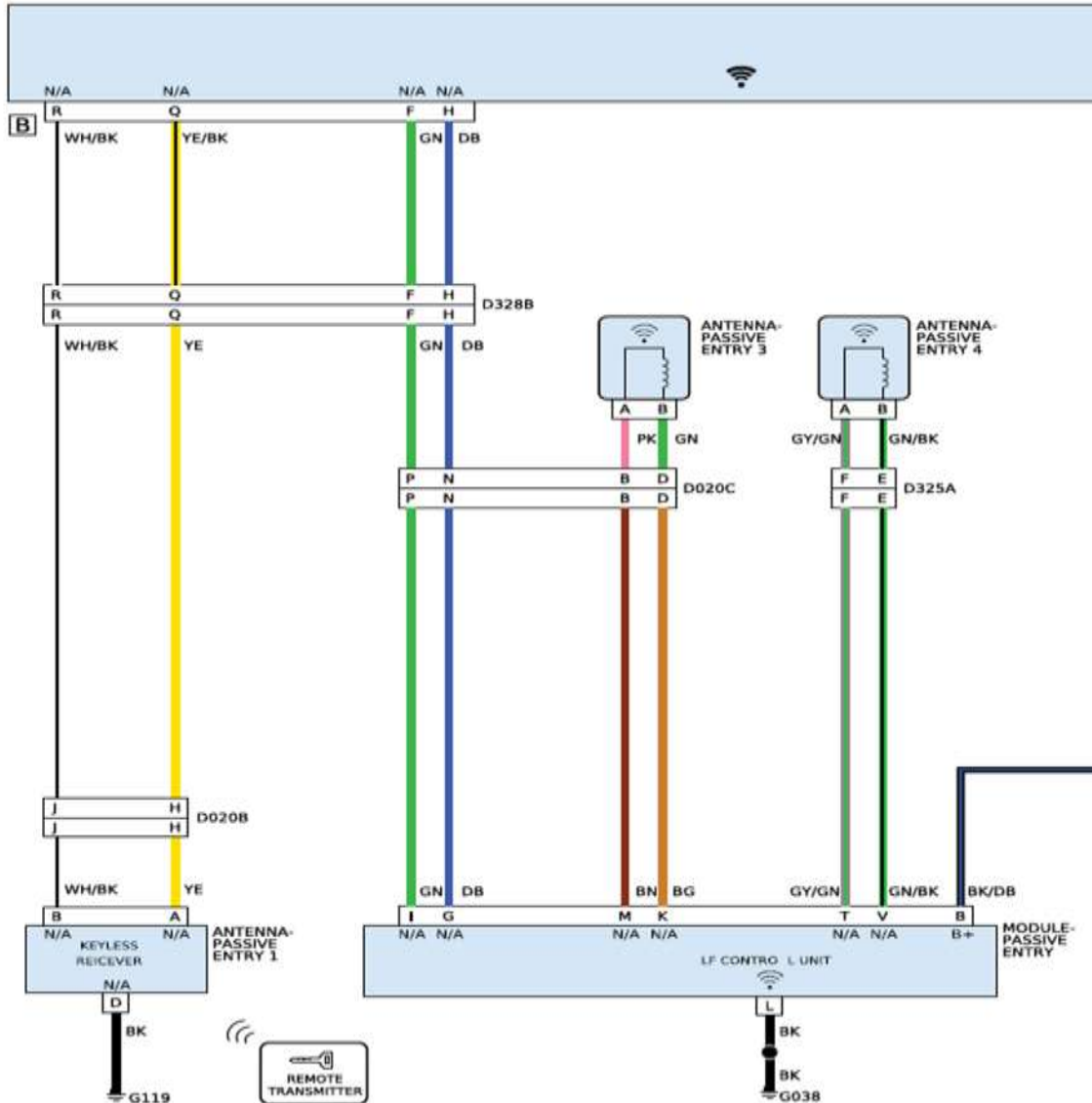
Contact STAR Center, or your Technical Assistance Center Via TechConnect, eCONTACT or Service Library entry if no solution is found.



STAR ONLINE PUBLICATION



Passive Entry - If the Smart door handles are activated, the RFH signals and monitors the three Low Frequency (LF) antennas. The LF antennas send out Radio Frequency (RF) signals to the FOB/K to verify the FOB/K. When a valid FOB/K is recognized by the RFH a CAN data bus message is sent to BCM to lock or unlock the vehicle by the RFH.



This document does not authorize warranty repairs. This communication documents a record of past experiences. STAR Online does not provide any conclusions about what is wrong with the vehicle. Rather, it captures all previous cases known that appear to be similar or related to the vehicle symptom / condition. You are the expert, and you are responsible for deciding on the appropriate course of action.

Contact STAR Center, or your Technical Assistance Center Via TechConnect, eCONTACT or Service Library entry if no solution is found.